



# Statistical Report

October 1, 2018 – March 31, 2019

## Table of Contents

<b>Medical Marijuana Facility Licensing</b> .....	<b>2</b>
1. Executive Summary.....	2
2. Executive Background.....	3
3. Metric Information.....	3
4. Actions Taken by the MRA.....	4
6. Total Number of Licensed Facility Operators in Each License Type.....	7
7. Average amount of time, from receipt to approval or denial, to process and initial application.....	7
8. Revenue Collected.....	8
9. Costs of administering the medical marijuana facilities licensing and tracking program.....	8
10. Conclusion.....	8
<b>Medical Marijuana Registry Program</b> .....	<b>8</b>
1. Executive Summary.....	8
2. Executive Background.....	10
3. Number of applications filed for registry identification cards.....	10
4. Number of qualifying patients and primary caregivers approved in each county.....	10
5. Nature of the debilitating medical conditions of the qualifying patients.....	14
6. Number of registry identification cards revoked.....	15
7. Number of physicians providing written certifications for qualifying patients.....	15
8. Number of initials, renewal and online applications received.....	15
9. Number of initial applications issued, and the initial applications denied.....	16
10. Average amount of time to process an initial application.....	17
11. Number of renewal applications issued & the number of renewal applications denied.....	18
12. Average amount of time to process a renewal application.....	19
13. Percentage of initial applications not approved or denied within the time requirements established in section 6 of the Michigan Medical Marijuana Act.....	19
14. Percentage of renewal applications not approved or denied within the time requirements established in section 6 of the Michigan Medical Marijuana Act.....	19
15. Percentage of registry cards for approved initial applications not issued within the time requirements established in section of the Michigan Medical Marijuana Act.....	20
16. Percentage of registry cards for approved renewal applications not issued within the time requirements established in section of the Michigan Medical Marijuana Act.....	20
17. Amount collected from the medical marijuana program applications and renewal fees authorized in section 5 of the Michigan Medical Marijuana Act.....	20
18. The costs of administering the Michigan Medical Marijuana Act.....	21
19. Conclusion.....	21



Governor Gretchen Whitmer



Director Orlene Hawks

## Medical Marijuana Facility Licensing

### 1. Executive Summary

The *Marijuana Regulatory Agency Quarterly Report* contains the reporting requirements pursuant to both MCL 333.27302(l) and 333.27702 and Section 519 of Public Act 107 of 2017. The Medical Marijuana Facilities Licensing Act, Section 302(l) [MCL 333.27302(l)] states:

*MRA's duties include all the following:*

*Reviewing the patterns of marijuana transfers by the licensees under this act as recorded in a statewide database established for use in administering and enforcing this act and making recommendations to the governor and the legislature in a written annual report to the governor and the legislature and additional reports that the governor requests. The annual report shall be submitted by April 15 of each year and shall include the report required under section 702, a statement of receipts and disbursements by the MRA, the actions taken by the MRA, and any additional information and recommendations that the MRA considers appropriate or that the governor requests.*

The Medical Marijuana Facilities Licensing Act, Section 702 [MCL 333.27702] states:

*The MRA shall submit with the annual report to the governor under section 302(k) (sic) and to the chairs of the legislative committees that govern issues related to marijuana facilities a report covering the previous year. The report shall include an account of the MRA actions, its financial position, results of operation under this act, and any recommendations for legislation that the MRA considers advisable.*

Public Act 208 of 2018 requires the following:

*Sec. 512. The department shall submit a report regarding the medical marijuana facilities licensing and tracking program to the standing committees on appropriations of the senate and house, the senate and house fiscal agencies, and*

*the state budget director by March 1. The report shall include, but is not limited to, the following:*

- a. The number of initial license applications received for each license category.*
- b. The number of initial applications approved, and the number of initial license applications denied.*
- c. The average amount of time, from receipt to approval or denial, to process an initial application.*
- d. The total number of license applications approved by license category.*
- e. The total amount collected from application fees and regulatory assessments.*
- f. The costs of administering the medical marijuana facilities licensing and tracking program.*

Pursuant to these requirements, this report has been reviewed by the MRA and prepared and issued electronically to the Governor, chairs of the legislative committees that govern issues related to marijuana facilities, chairs of the House and Senate appropriations standing committees, the House and Senate Fiscal Agencies, and the state budget director to meet the annual, March 1 and April 15 reporting requirements. In addition, this report is also online under the following locations:

- The Marijuana Regulatory Agency (MRA) website at: [www.michigan.gov/mra](http://www.michigan.gov/mra)
- The All About LARA section - Legislative Reports of the Department of Licensing and Regulatory Affairs website at: [www.michigan.gov/lara](http://www.michigan.gov/lara)

## **2. Executive Background**

The Medical Marijuana Facilities Licensing Act (MMFLA) is a state licensing program administered by the Marijuana Regulatory Agency (MRA), Michigan Department of Licensing and Regulatory Affairs (LARA). The program administers the MMFLA and Marijuana Tracking Act (MTA) as enacted on December 20, 2016. The agency implements the statutory tenets of this act in such a manner that protects the public and assures the safe acquisition of marijuana for patients throughout Michigan. Specifically, the information provided in this report is based on data from October 1, 2018 through March 31, 2019.

### 3. Metric Information

10/01/2018 – 3/31/2019	
Total Sales	\$57,536,328.08
Total Weight Sold in Pounds	10,965.57
Avg Price Flower (mean)	\$174.15 per oz
Avg Price Flower (median)	\$207.63 per oz

	Active	Destroyed	On Hold
Immature Plants	6,390	8,926	0
Plants	23,406	6,065	0
Vegetative	10,827	5,239	0
Flowering	12,579	826	0
Harvested	14,402	0	0

Packages - Active	27,426
On Hold	53
In Transit	13
Finished	15,026
Discontinued	912

Transfers	1,469
Overdue	3
Voided	83

## Sales by Product Type

OCTOBER	Product Type	Pounds Sold	Total Sales
	Flower	176.48	\$412,563.51
	Shake/Trim	2.47	\$3,059.00
	Concentrate	18.21	\$200,866.55
	Infused-Edible	0.75	\$24,590.11
<b>October Total</b>	<b>197.91</b>	<b>\$641,079.17</b>	

NOVEMBER	Product Type	Pounds Sold	Fluid Ounces Sold	Total Sales
	Flower	1,514.31	--	\$3,911,519.57
	Shake/Trim	83.09	--	\$59,503.91
	Concentrate	272.70	--	\$2,699,249.02
	Infused-Edible	929.22	--	\$523,212.21
	Infused Non-Edible Solid	84.07	--	\$47,933.85
	Infused Liquid	--	5,369.61	\$59,500.76
	Infused Non-Edible Liquid	--	0.02	\$32.70
<b>November Total</b>	<b>2,883.38</b>	<b>5,369.63</b>	<b>\$7,300,952.02</b>	

DECEMBER	Product Type	Pounds Sold	Fluid Ounces Sold	Total Sales
	Flower	1,901.19	--	\$5,067,809.54
	Shake/Trim	65.34	--	\$129,340.41
	Concentrate	351.26	--	\$3,503,706.24
	Infused-Edible	1,819.29	--	\$723,220.83
	Infused Non-Edible Solid	151.68	--	\$141,704.68
	Infused Liquid	--	15,363.65	\$94,128.01
	Infused Non-Edible Liquid	--	213.60	\$6,765.98
<b>December Total</b>	<b>4,288.76</b>	<b>15,577.25</b>	<b>\$9,666,675.69</b>	

JANUARY	Product Type	Pounds Sold	Fluid Ounces Sold	Total Sales
	Flower	2,169.95	--	\$6,491,642.69
	Shake/Trim	48.30	--	\$107,694.26
	Concentrate	306.86	--	\$3,694,733.72
	Infused-Edible	1,959.85	--	\$931,186.42
	Infused Non-Edible Solid	117.79	--	\$120,823.11
	Infused Liquid	--	9,297.13	\$115,483.74
	Infused Non-Edible Liquid	--	1,003.29	\$16,131.73
<b>January Total</b>	<b>4,602.75</b>	<b>10,300.43</b>	<b>\$11,477,695.67</b>	

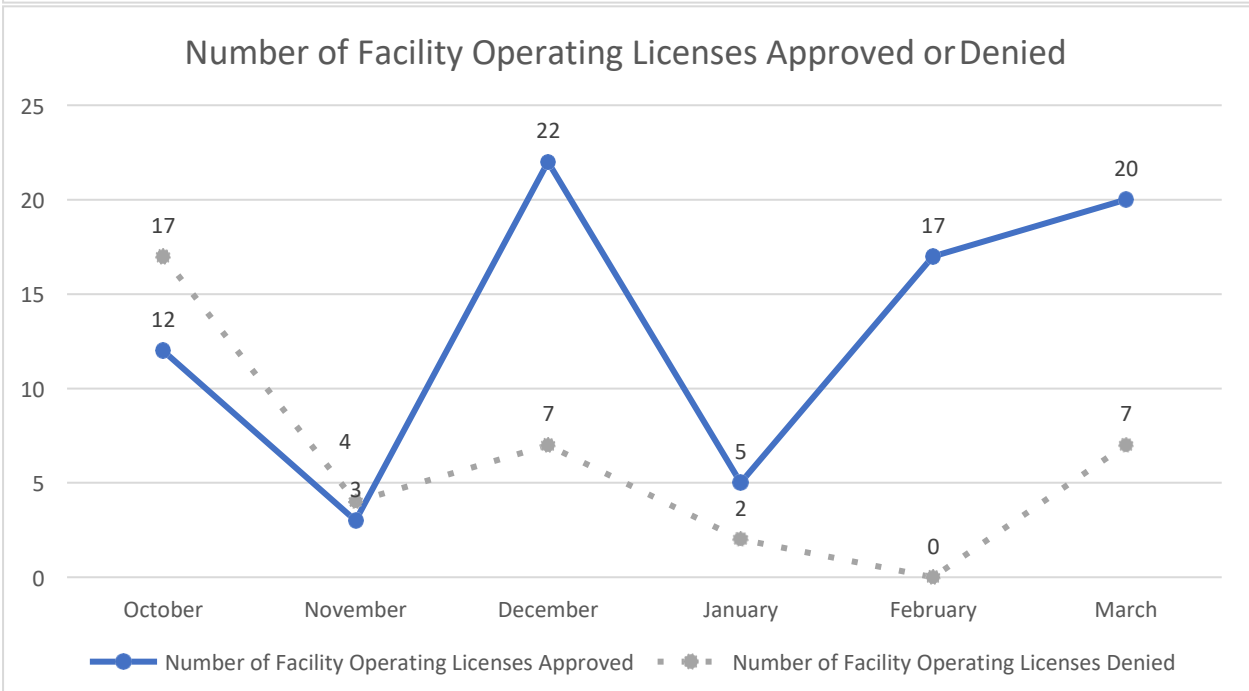
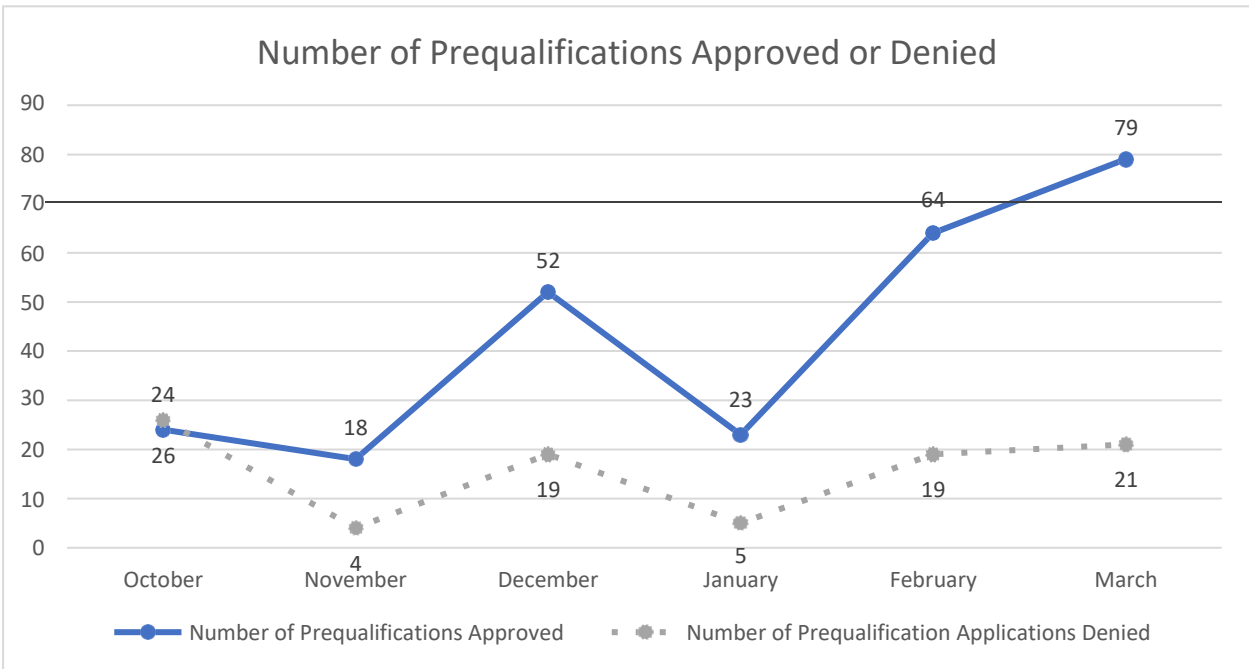
<b>FEBRUARY</b>	<b>Product Type</b>	<b>Pounds Sold</b>	<b>Fluid Ounces Sold</b>	<b>Total Sales</b>
	Flower	2,259.49	--	\$6,372,991.47
	Shake/Trim	94.64	--	\$167,072.66
	Concentrate	388.41	--	\$4,280,238.49
	Infused-Edible	2,708.79	--	\$961,458.93
	Infused Non-Edible Solid	208.56	--	\$89,368.00
	Infused Liquid	--	6,146.17	\$129,653.69
	Infused Non-Edible Liquid	--	553.88	\$10,925.95
	<b>February Total</b>	<b>5,659.88</b>	<b>6,700.05</b>	<b>\$12,011,709.19</b>

<b>MARCH</b>	<b>Product Type</b>	<b>Pounds Sold</b>	<b>Fluid Ounces Sold</b>	<b>Total Sales</b>
	Flower	2,944.16	--	\$8,487,622.57
	Shake/Trim	121.86	--	\$211,914.46
	Concentrate	551.86	--	\$6,004,650.87
	Infused-Edible	3,911.24	--	\$1,349,902.73
	Infused Non-Edible Solid	251.13	--	\$150,745.15
	Infused Liquid	--	7,245.26	\$201,892.37
	Infused Non-Edible Liquid	--	938.53	\$31,488.19
	<b>March Total</b>	<b>7,780.25</b>	<b>8,183.79</b>	<b>16,438,216.34</b>

<b>TOTAL</b>	<b>Product Type</b>	<b>Pounds Sold</b>	<b>Fluid Ounces Sold</b>	<b>Total Sales</b>
	Flower	10,965.57	--	\$30,744,149.35
	Shake/Trim	415.69	--	\$678,584.70
	Concentrate	1,889.31	--	\$20,383,444.89
	Infused-Edible	11,329.14	--	\$4,513,571.23
	Infused Non-Edible Solid	813.22	--	\$550,574.79
	Infused Liquid	--	43,421.82	\$600,658.57
	Infused Non-Edible Liquid	--	2,709.32	\$65,344.55
	<b>Oct 1, 2018 - Mar 30, 2019 Total</b>	<b>25,412.92</b>	<b>46,131.14</b>	<b>\$57,536,328.08</b>

#### 4. Actions Taken by the MRA

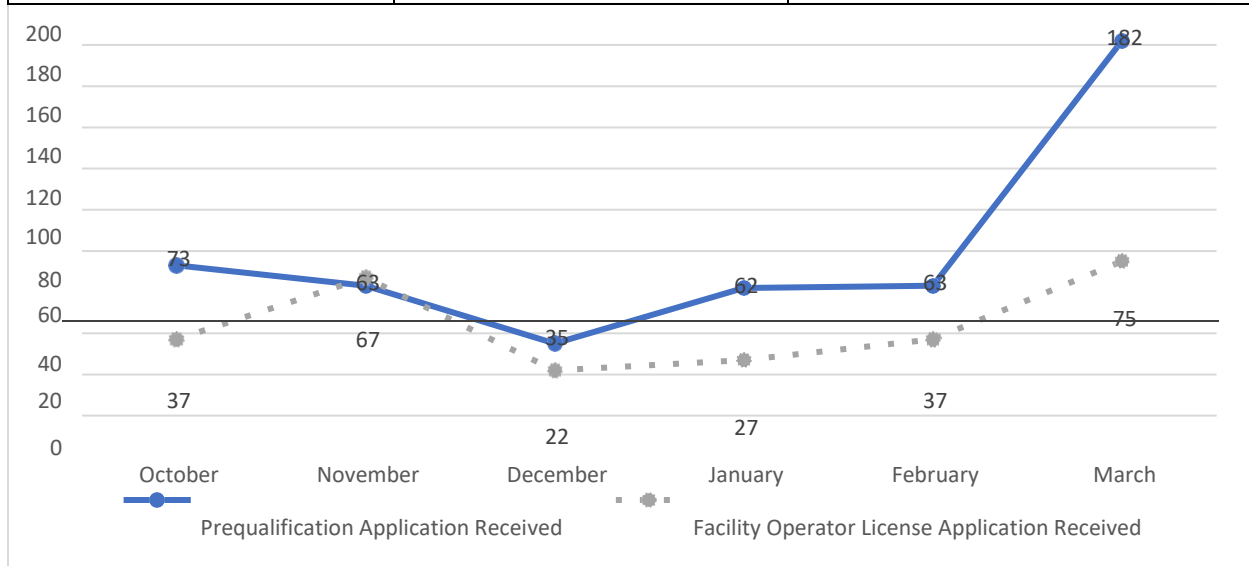
Action Taken	Count
Prequalification Applications Approved	260
Prequalification Applications Denied	94
License Applications Approved	79
License Applications Denied	37
Disciplinary Action Taken	0





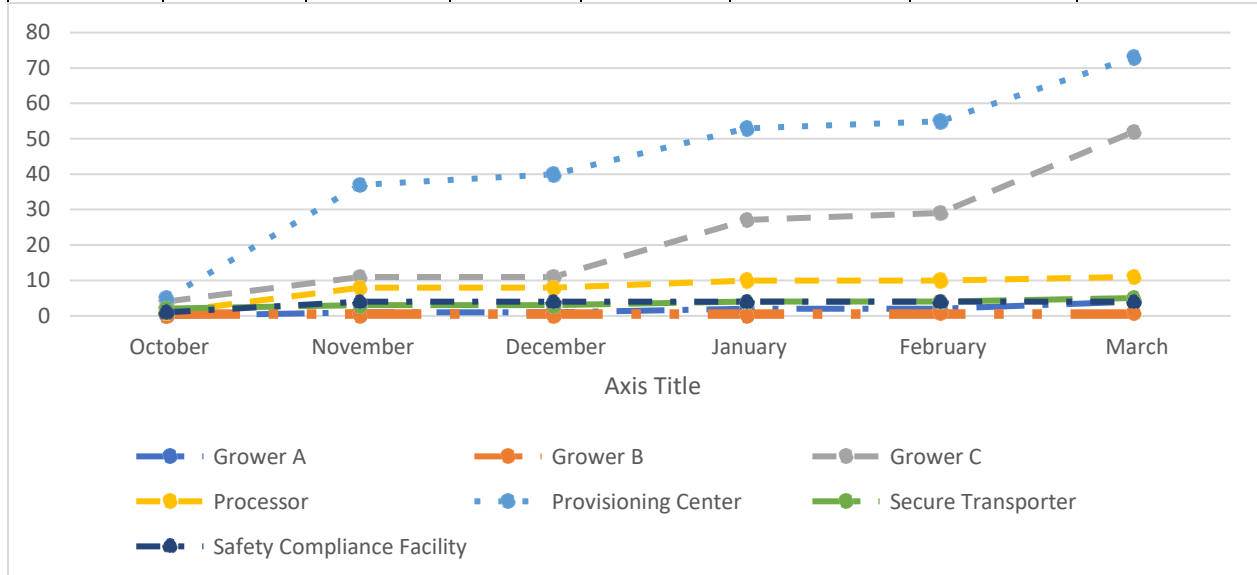
### 5. Total number of prequalification applications and facility operating license applications received

	Prequalification Applications Received	Facility Operator License Applications Received
October	73	37
November	63	67
December	35	22
January	62	27
February	63	37
March	182	75



## 6. Total Number of Licensed Facility Operators in Each License Type

	Grower A	Grower B	Grower C	Processor	Provisioning Center	Secure Transporter	Safety Compliance Facility
October	0	0	4	1	5	2	1
November	1	0	11	8	37	3	4
December	1	0	11	8	40	3	4
January	2	0	27	10	53	4	4
February	2	1	29	10	55	4	4
March	4	1	52	11	73	5	4



## 7. Average amount of time, from receipt to approval or denial, to process and initial application

160 business days

## 8. Revenue collected

Month	Amount Collected
October	\$1,421,106.19
November	\$1,100,220.00
December	\$1,905,100.00
<b>2018 Total</b>	<b>\$4,426,426.19</b>
January	\$1,230,000.00
February	\$1,107,349.88
March	\$2,462,086.05
<b>2019 Year to Date Total</b>	<b>\$4,799,435.93</b>

## 9. Costs of administering the medical marijuana facilities licensing and tracking program.

\$4,682,317

## 10. Conclusion

The Marijuana Regulatory Agency's executive and legislative charge is the oversight of medical marijuana in Michigan. This includes the administration and oversight of the MMFLA. The information contained in this report is required pursuant to MCL 333.27302(l) and 333.27702 and Section 512 of Public Act 208 of 2018 and provides specific information regarding: applications submitted, applications approved, applications denied, licenses issued, revenue, expenditures, and timeliness information of the MRA for the time period beginning October 1, 2018 through March 31, 2019.

## Medical Marijuana Registry Program

### 1. Executive Summary

The *Marijuana Regulatory Agency Quarterly Report* contains the reporting requirements pursuant to both MCL 333.26426(i) (1), (2), (3), (4) and (5) and Section 505 of Public Act 207 of 2018.

The Michigan Medical Marijuana Act, Initiated Law 1 of 2008, Section 6 (i) [MCL 333.26426 (i) (1), (2), (3), (4) and (5)] states: The department shall submit to the legislature an annual report that does not disclose any identifying information about qualifying patients, primary caregivers, or physicians, but does contain, at a minimum, all of the following information:

- a. *The number of applications filed for registry identification cards.*
- b. *The number of qualifying patients and primary caregivers approved in each county.*
- c. *The nature of the debilitating medical conditions of the qualifying patients.*
- d. *The number of registry identification cards revoked.*
- e. *The number of physicians providing written certifications for qualifying patients.*

Sec. 505. *The department shall submit a report by January 31 to the standing committees on appropriations of the senate and house of representatives, the fiscal agencies, and the state budget director that includes all of the following information for the prior fiscal year regarding the medical marihuana program under the Michigan medical marihuana act, 2008 IL 1, MCL 333.26421 to 333.26430:*

- a. *The number of initial applications received.*
- b. *The number of initial applications approved, and the number of initial applications denied.*
- c. *The average amount of time, from receipt to approval or denial, to process an initial application.*
- d. *The number of renewal applications received.*
- e. *The number of renewal applications approved, and the number of renewal applications denied.*
- f. *The average amount of time, from receipt to approval or denial, to process a renewal application. The percentage of initial applications not approved or denied within the time requirements established in section 6 of the Michigan medical marihuana act, 2008 IL 1, MCL 333.26426.*
- g. *The percentage of renewal applications not approved or denied within the time requirements established in section 6 of the Michigan medical marihuana act, 2008 IL 1, MCL 333.26426.*
- h. *The percentage of registry cards for approved initial applications not issued within the time requirements established in section 6 of the Michigan medical marihuana act, 2008 IL 1, MCL 333.26426.*
- i. *The percentage of registry cards for approved renewal applications not issued within the time requirements established in section 6 of the Michigan medical marihuana act, 2008 IL 1, MCL 333.26426.*
- j. *The amount collected from the medical marihuana program application and renewal fees authorized in section 5 of the Michigan medical marihuana act, 2008 IL 1, MCL 333.26425.*
- k. *The costs of administering the medical marihuana program under the Michigan medical marihuana act, 2008 IL 1, MCL 333.26421 to 333.26430.*

Pursuant to these requirements, this report has been prepared and issued electronically to the House and Senate appropriations standing committees, House and Senate Fiscal Agencies, and the state budget director to meet the both the annual and January 31 reporting requirements. In addition, this report is also online under the following locations:

The Marijuana Regulatory Agency (MRA) website at: [www.michigan.gov/MRA](http://www.michigan.gov/MRA)

The All About LARA section - Legislative Reports of the Department of Licensing and Regulatory Affairs website at: [www.michigan.gov/lara](http://www.michigan.gov/lara)

## 2. Executive Background

The Michigan Medical Marijuana Program (MMMP) is a state registry program within the Marijuana Regulatory Agency, Michigan Department of Licensing and Regulatory Affairs (LARA). The program administers the Michigan Medical Marijuana Act as approved by Michigan voters on November 4, 2008. The program implements the statutory tenets of this act in such a manner that protects the public and assures the confidentiality of its participants.

Specifically, the information provided in this report is based on data from October 1, 2018 through March 31, 2019

## 3. Number of applications filed for registry identification cards

52,363

## 4. Number of qualifying patients and primary caregivers approved in each county

County	Patients	Caregivers	CG Person
Alcona	442	133	61
Alger	255	127	62
Allegan	3,261	1,229	566
Alpena	772	163	99
Antrim	849	364	174
Arenac	862	265	139
Baraga	168	61	26
Barry	1,627	559	272
Bay	4,122	864	407
Benzie	676	255	119
Berrien	4,504	1,784	812
Branch	1,546	607	275

Calhoun	3,623	1,247	668
Cass	1,601	581	282
Charlevoix	691	258	127
Cheboygan	615	199	97
Chippewa	718	278	121
Clare	1187	390	186
Clinton	1,786	556	271
Crawford	506	171	82
Delta	956	361	187
Dickinson	769	396	170
Eaton	3,735	1,393	648
Emmet	759	186	101
Genesee	16,040	5,735	2,671
Gladwin	783	302	129
Gogebic	444	206	97
Grand Traverse	2,464	871	406
Gratiot	977	312	143
Hillsdale	1,814	684	339
Houghton	602	216	103
Huron	720	133	76
Ingham	9,087	2,837	1,331
Ionia	1,356	351	180
Iosco	913	216	120
Iron	430	178	80
Isabella	1,234	361	178
Jackson	5,013	1,735	861
Kalamazoo	5,316	1,630	900

Kalkaska	706	312	149
Kent	11,029	2,733	1,300
Keweenaw	69	24	16
Lake	434	161	80
Lapeer	3,276	1,179	556
Leelanau	419	135	63
Lenawee	4,290	1,488	692
Livingston	4,664	1,226	632
Luce	141	41	25
Mackinac	296	87	42
Macomb	28,310	9,229	3,873
Manistee	721	255	131
Marquette	1,198	618	327
Mason	933	251	127
Mecosta	867	231	120
Menominee	676	321	133
Midland	1,893	435	225
Missaukee	298	129	61
Monroe	5,063	1,321	689
Montcalm	2,005	892	408
Montmorency	421	157	83
Muskegon	4,613	1,288	605
Newaygo	1,631	510	268
Oakland	35,772	9,462	4,362
Oceana	1,111	355	157
Ogemaw	635	158	87
Ontonagon	173	47	24

Osceola	705	287	139
Oscoda	222	61	29
Otsego	714	274	130
Ottawa	4,581	1,075	534
Presque Isle	326	122	61
Roscommon	881	287	138
Saginaw	5,205	1,322	679
Saint Clair	4,364	1,308	614
Saint Joseph	1,585	521	283
Sanilac	1,169	400	185
Schoolcraft	245	92	51
Shiawassee	2,669	843	424
Tuscola	2,634	1,124	477
Van Buren	2,567	980	482
Washtenaw	12,536	2,781	1,404
Wayne	47,799	10,554	5,560
Wexford	986	412	195
<b>Total</b>	<b>284,088</b>	<b>83,693</b>	<b>40,197</b>



## 5. Nature of the debilitating medical conditions of the qualifying patients

<u>Condition</u>	<u>Sub Total</u>	<u>Percent</u>
Muscle Spasms	10,302	10.33%
Seizures	1,139	1.14%
Severe and Chronic Pain	36,672	36.75%
Post-Traumatic Stress Disorder	2,971	2.98%
Severe Nausea	4,812	4.82%
Glaucoma	733	0.73%
Rheumatoid Arthritis	727	0.73%
Arthritis	10,353	10.38%
HIV Positive	233	0.23%
Parkinson's Disease	127	0.13%
Severe and Persistent Muscle Spasms	170	0.17%
Cerebral Palsy	6	0.01%
Crohn's Disease	515	0.52%
Cachexia or Wasting Syndrome	425	0.43%
Amyotrophic Lateral Sclerosis	32	0.03%
Chronic Pain	24,789	24.84%
Inflammatory Bowel Disease	452	0.45%
Tourette's Syndrome	55	0.06%
Obsessive Compulsive Disorder	585	0.59%
Agitation of Alzheimer's Disease	44	0.04%
Other	8	0.01%
Colitis	212	0.21%
AIDS	44	0.04%
Spinal Cord Injury	300	0.30%

Hepatitis C	398	0.40%
Autism	204	0.20%
Cancer	3,265	3.27%
Nail Patella	7	0.01%
Ulcerative Colitis	196	0.20%

## 6. Number of registry identification cards revoked

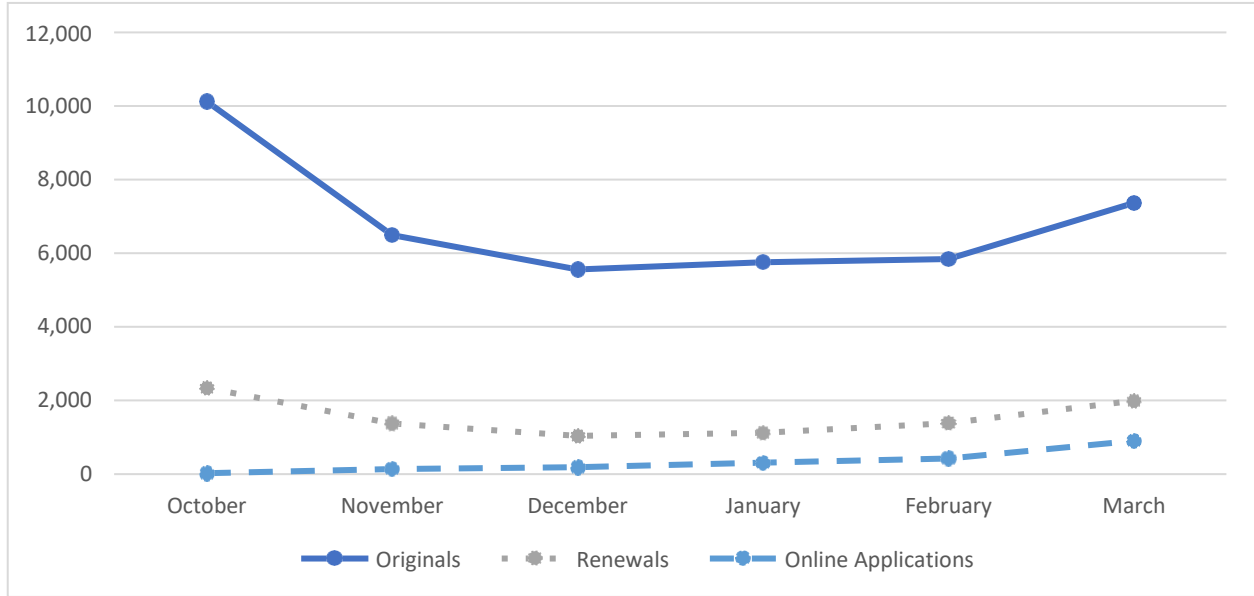
Zero registry cards were revoked between October 1, 2018 and March 31, 2019

## 7. Number of physicians providing written certifications for qualifying patients

Between the time period of October 1, 2018 to March 31, 2019, there was a total of 1,322 physicians that provided certifications for qualifying medical marijuana patients.

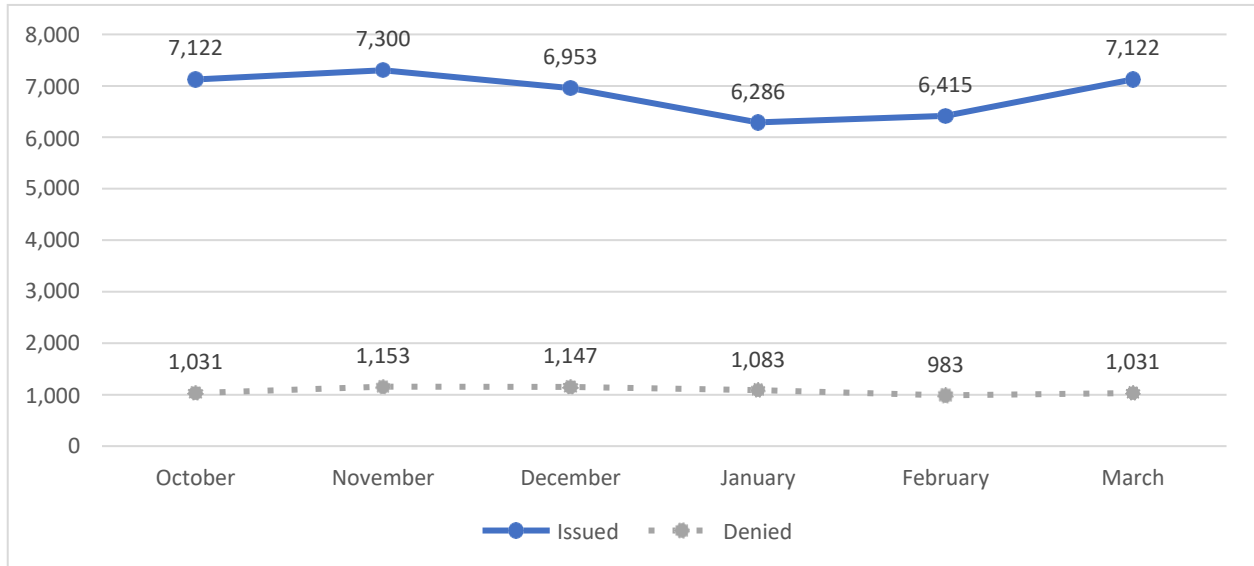
## 8. Number of initials, renewal and online applications received

	Initial	Renewal	Online Applications
October	10122	2338	22
November	6494	1372	137
December	5558	1040	187
January	5756	1127	308
February	5840	1388	422
March	7363	1990	899



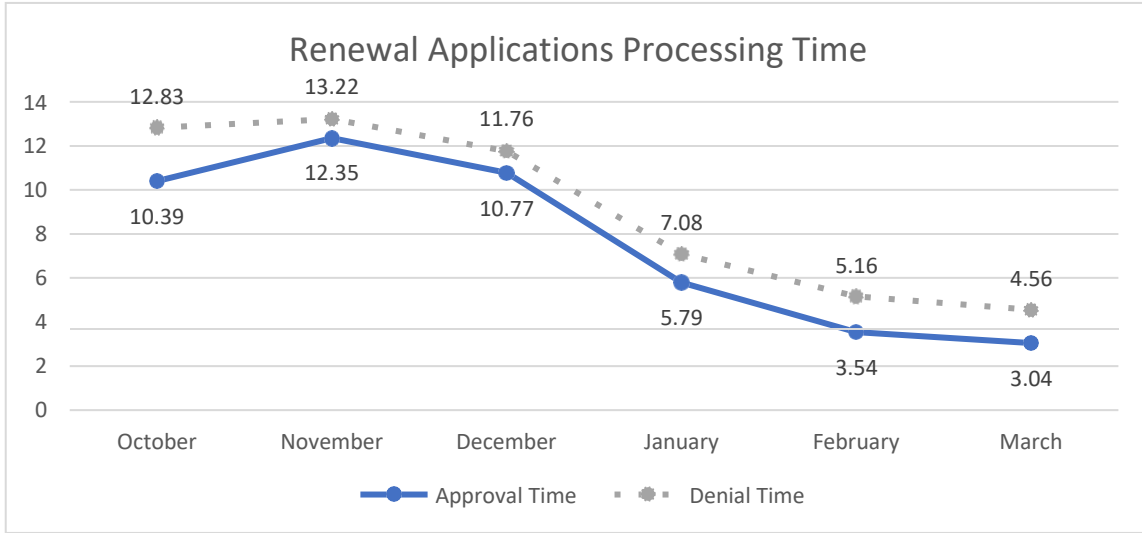
**9. Number of initial applications issued, and the initial applications denied**

Month	Issued	Denied
October	7,122	1,031
November	7,300	1,153
December	6,953	1,147
January	6,286	1,083
February	6,415	983
March	7,122	1,031



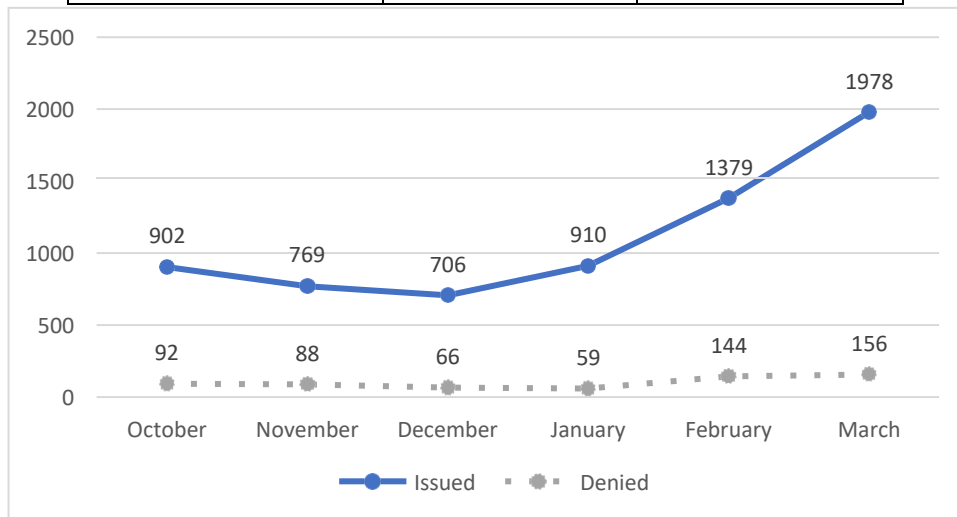
**10. Average amount of time, from receipt to approval or denial, to process an initial application**

	Approval Time	Denial Time	% non-compliant
October	10.14	13.17	0.46%
November	12.41	13.35	0.38%
December	11.21	12.26	0.39%
January	6.46	7.66	0.08%
February	3.7	4.8	0.01%
March	3.02	3.04	0.00%



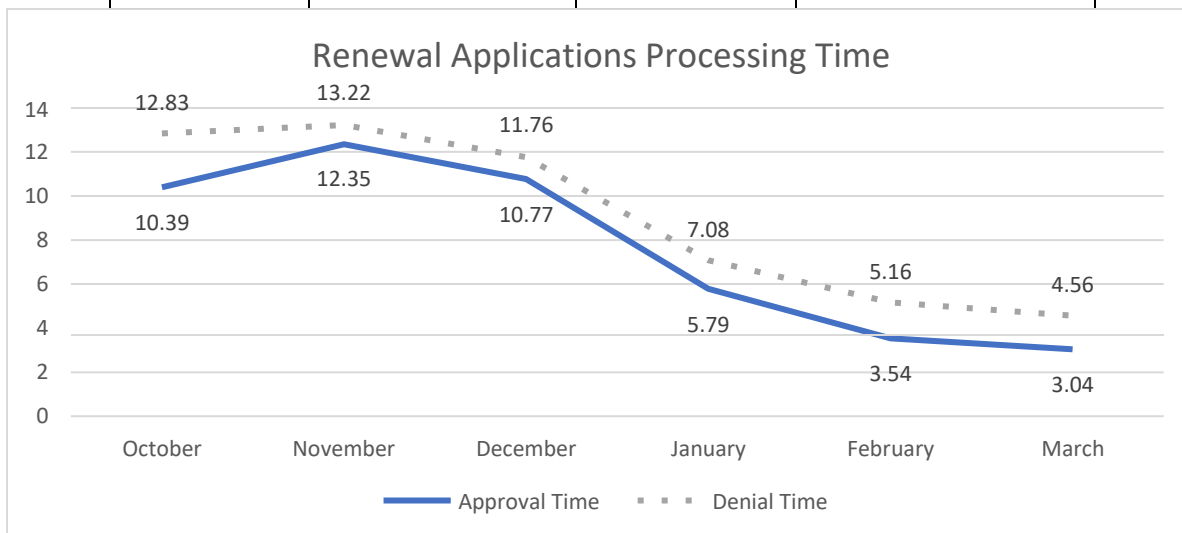
### 11. Number of renewal applications issued, and the number of renewal applications denied

Month	Issued	Denied
October	902	92
November	769	88
December	706	66
January	910	59
February	1379	144
March	1978	156



**12. Average amount of time, from receipt to approval or denial, to process a renewal application**

	Approval Time	Denial Time	% non-compliant
October	10.39	12.83	1.59%
November	12.35	13.22	0.23%
December	10.77	11.76	0.39%
January	5.79	7.08	0.00%
February	3.54	5.16	0.06%
March	3.04	4.56	0.00%



**13. Percentage of initial applications not approved or denied within the time requirements established in section 6 of the Michigan Medical Marihuana Act**

.22%

**14. Percentage of renewal applications not approved or denied within the time requirements established in section 6 of the Michigan Medical Marihauna Act**

.31%

**15. Percentage of registry cards for approved initial applications not issued within the time requirements established in section of the Michigan Medical Marihuana Act**

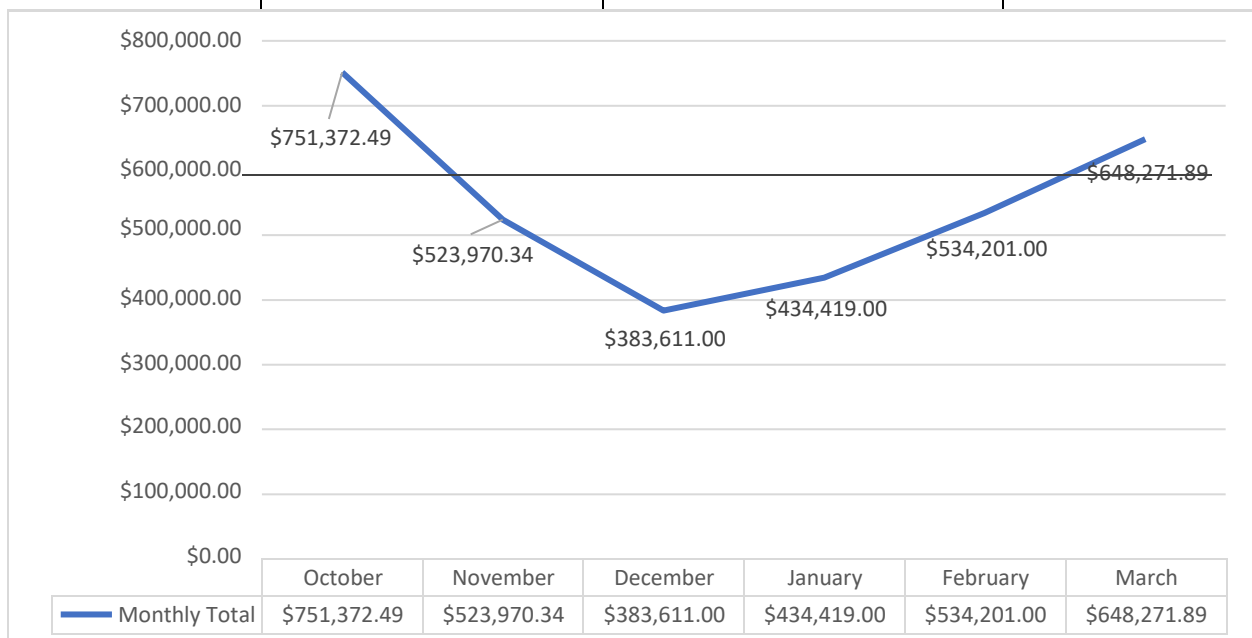
0%

**16. Percentage of registry cards for approved renewal applications not issued within the time requirements established in section of the Michigan Medical Marihuana Act**

0%

**17. Amount collected from the medical marihuana program applications and renewal fees authorized in section 5 of the Michigan Medical Marihuana Act**

MMMP Amount collected in Fees	
October	\$751,372.49
November	\$523,970.34
December	\$383,611.00
January	\$434,419.00
February	\$534,201.00
March	\$648,271.89



## **18. Costs of administering the Michigan Medical Marihuana Act**

\$1,813,142

## **19. Conclusion**

The Marijuana Regulatory Agency's executive and legislative charge is the oversight of medical marijuana in Michigan. This includes the administration and oversight of the MMMP. The information contained in this report is required pursuant to MCL 333.26426 (i) (1), (2), (3), (4) and (5) and Section 505 of PA 207 of 2018 and provides specific information regarding: identification cards, patients and primary caregivers, the nature of debilitating medical conditions of qualifying patients, the number of physicians providing written certifications for qualifying patients, revenue, expenditures, application determinations, and timeliness information of the MMMP for the time period beginning October 1, 2018 through March 31, 2019.