

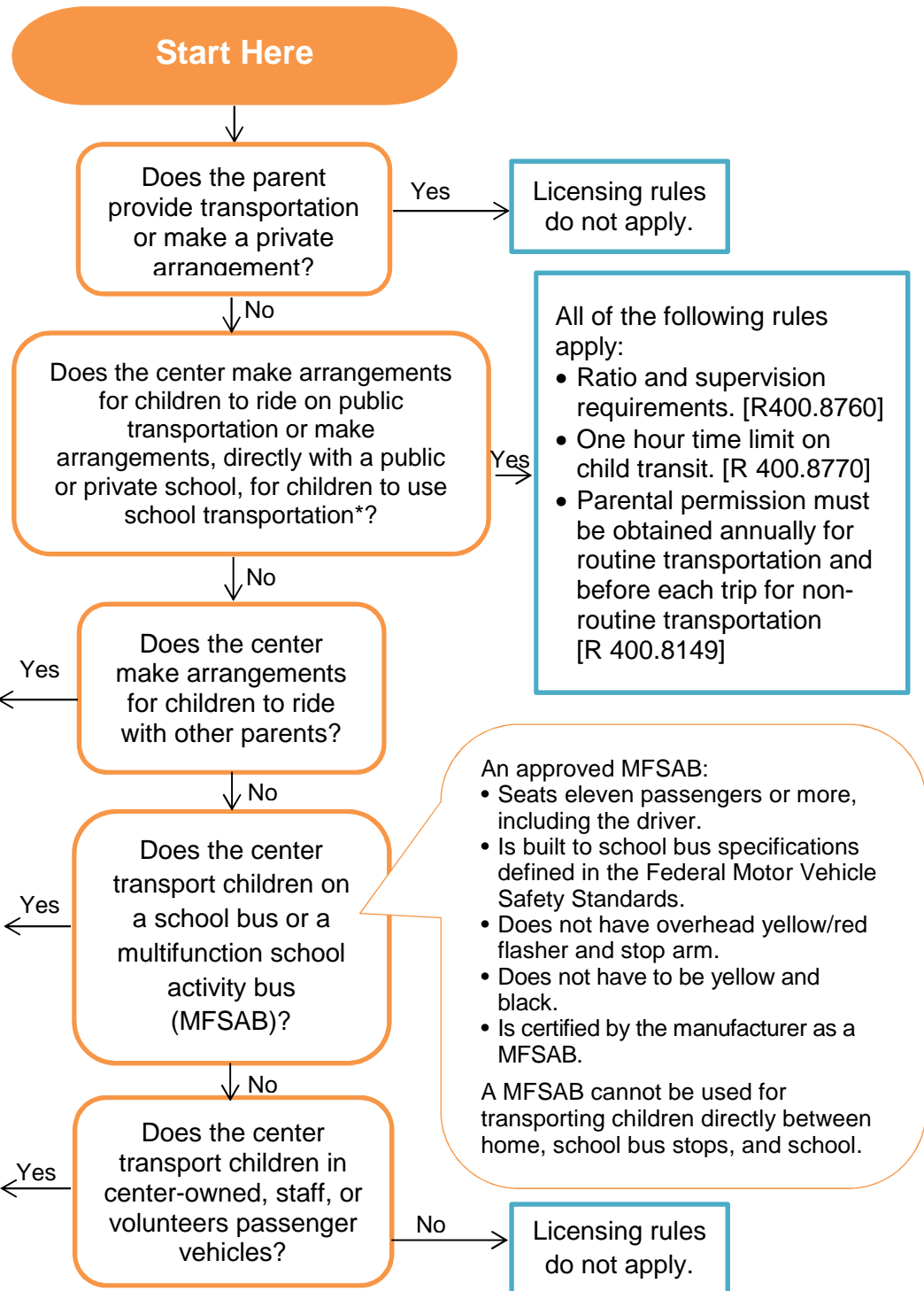
Transportation Requirements for Child Care Centers at a Glance

Start Here

All of the following rules* apply:

- Ratio and supervision requirements. [R 400.8760]
- One hour time limit on child transit. [R 400.8770]
- Parental permission must be obtained annually for routine transportation and before each trip for non-routine transportation. [R 400.8149]
- All motor vehicles must be in safe operating condition. [R 400.8720]
- Motor vehicle seats used by children, staff and volunteers must not face sideways. [R 400.8720]
- A truck must not be used to transport children, except in the cab. [R 400.8720]
- There must be no loose or heavy objects in the passenger compartment of any motor vehicle. [R 400.8720]
- All motor vehicles, except MFSABs and school buses inspected by the Michigan State Police (MSP), must be inspected annually by a licensed mechanic. A copy of the inspection must be kept on file. This does not apply to volunteer vehicles. [R 400.8720]
- For MFSABs and school buses, the center must contact MSP to determine if MSP will conduct an annual inspection under the Pupil Transportation Act (1990 PA 187). If not done by MSP, obtain an annual inspection by a licensed mechanic. A copy of the inspection must be kept on file. [R 400.8720]
- A statement verifying that the motor vehicle is in compliance with the Michigan vehicle code safety equipment requirements must be kept on file in the center. See R 400.8720(4).

* Driver, safety equipment and restraint device requirements are not listed here. See R 400.8730, 400.8740 and 400.8750



- An approved MFSAB:
- Seats eleven passengers or more, including the driver.
 - Is built to school bus specifications defined in the Federal Motor Vehicle Safety Standards.
 - Does not have overhead yellow/red flasher and stop arm.
 - Does not have to be yellow and black.
 - Is certified by the manufacturer as a MFSAB.

A MFSAB cannot be used for transporting children directly between home, school bus stops, and school.

*Some centers contract transportation services with a private entity, such as a charter bus company. If you are making arrangements with a private entity, contact your licensing consultant regarding the rules that apply when making this type of arrangement.

Note: The use of passenger vans with a rated seating capacity of 11 or more, including volunteer vehicles, is prohibited. Removing one or more bench seats, or a row of seats, does not change the manufacturer's rated seating capacity of a vehicle. It is still illegal to transport children in 11-15 passenger vans, regardless

LARA is an equal opportunity employer/program.