



CMEAA
COMMISSION ON MIDDLE EASTERN
AMERICAN AFFAIRS
M I C H I G A N

MEETING AGENDA

December 5th, 2018 | Noon to 2:00 PM

Dickinson Wright

350 S. Main Street. – Suite 300, Ann Arbor, MI 48104
734-623-7075

Noon	Opening meeting & roll call	Manal Saab
	Adoption of Proposed Agenda	
	Approval of Minutes	Suzanne Sukkar
12:05 PM	Treasurer's Report	Lina Harajli
12:10 PM	LARA/MONA/GOV Updates	Karen Phillippi
12:15 PM	Economic Impact Study	Everyone
1:30 PM	Old Business	Manal Saab
1:35 PM	New Business	Manal Saab
1:40 PM	Comments from the Public	
2:00 PM	Adjourn	

NEXT MEETING:

Friday March 1, 2019

Arab American National Museum - Annex
13624 Michigan Avenue
Dearborn, MI 48126
(313) 582-2266



CMEAA
COMMISSION ON MIDDLE EASTERN
AMERICAN AFFAIRS
M I C H I G A N

2019 MEETING SCHEDULE

NOON-2PM
(11:30 AM Lunch)

Friday, March 1, 2019

501 Bar & Grill
500 S Saginaw St
Flint, MI 48502
(810) 410-4406

Friday, June 7, 2019

Arab American National Museum – The Annex
13624 Michigan Ave
Dearborn, MI 48126
(313) 582-2266

September Meeting Date & Time TBD

Monday, December 2, 2019

The Chaldean Community Foundation
3601 15 Mile Rd
Sterling Heights, MI 48310
(586) 722-7253



CMEAA
COMMISSION ON MIDDLE EASTERN
AMERICAN AFFAIRS
M I C H I G A N

Meeting Minutes

September 6th, 2018, 2:30 P.M.

THE HENRY HOTEL

300 Town Center Drive, Dearborn, MI 48126

ATTENDANCE:

Commissioners Present:

Manal Saab, Chair	Haifa Fakhouri
Sharif Hussein, Second Vice-Chair	Fadwa Hammoud
Lina Hourani-Harajli, Treasurer	Martin Manna
Suzanne Sukkar, Secretary	Adel Mozip
Susan Dabaja, Trustee at Large	Nabeel Obeid
Dave Abdallah	

Commissioners Absent:

Michael Romaya, Vice Chair	Ronald Haddad
Fay Beydoun	Abe Munfakh

Staff: Mike Zimmer (Cabinet Director, Gov), Ron Robinson (Assistant Attorney General), Karen Phillippi (Interim Director, MONA), Nick Payne (Cabinet Liaison, Gov), Raya Fares (CMEAA Coordinator), Lilian Boufakhreddine (CMEAA Coordinator Volunteer Trainee)

I. CALL TO ORDER

The meeting was called to order by Chair Saab at 2:30 p.m. Roll call was taken, and a quorum was present.

Chair Saab welcomed Commissioner Martin Manna to the CMEAA.

Chair Saab welcomed Director Karen Phillippi and issued the following statement:

“I would like to welcome Director Karen Phillippi and offer our sincere congratulations on her appointment to head the Michigan Office for New Americans. I believe I speak on behalf of the commission on Middle Eastern American Affairs in pledging our

support for a productive cooperation for the benefit of all Michiganders.”

Chair Saab briefed the commissioners on the 2018 GALA check in process.

II. APPROVAL OF AGENDA

MOTION: Commissioner Abdallah moved to accept the agenda. Motion supported by Commissioner Hussein. Motion passed unanimously.

III. APPROVAL OF MEETING MINUTES

MOTION: Commissioner Fakhouri moved to edit the minutes of February 8^h, 2018 to correct the location. Commissioner Mozip moved to accept the updated minutes. Motion supported by Commissioner Hourani-Harajli. Motion passed unanimously.

IV. TREASURER’S REPORT

Commissioner Hourani-Harajli provided the Commission with both an updated spending plan and expense report and reviewed financial details with the Commission. Commissioners were reminded that the 2018/2019 budget will remain at \$125,000.

MOTION: Commissioner Sukkar moved to accept the CMEAA Treasurer’s Report. Motion supported by Commissioner Hammoud. Motion passed unanimously.

V. LARA/MONA DIRECTOR’S UPDATE

Cabinet Director Mike Zimmer reminded the commissioners of the strength in collaborating with other ethnic commissions and proposed utilizing joint meetings to adopt new procedures to better facilitate the Commission’s work.

VI. ECONOMIC IMPACT STUDY STATUS UPDATES

Chair Manal summarized the quantitative and statistically rigorous approach of the Economic Impact Study through Wayne State University. As a reminder, the study’s purpose was to illustrate the economic impact of Middle Eastern Americans in Michigan. During previous discussion, Commissioners expressed concerns with 2010 census data since we now know, 8 years later, that we had an influx of roughly 30% more representation in the Middle Eastern American community in the State of Michigan. In order to properly proceed with Phase 2 of the study, the Commission would need another \$1 million-\$1.5 million.

Commissioner Hourani-Harajli states that the \$65,000 used for this study was not enough to use updated information of the Michigan Middle East Community, but the budget was maximized to its full potential and thereby debunked the rhetoric used against Middle Eastern Americans in Michigan.

Commissioner Mozip suggested that infographics be created to help spotlight findings from the study to better disseminate information to the public. Commissioner Mozip volunteered to spearhead this effort with Commission approval prior to publication. A lengthy discussion followed on how to best publicize the results of the study. Commissioner Dabaja and Commissioner Obeid suggested to highlight a summary of the study that can be utilized as a communication tool and issued in a formal press release.

Chair Saab suggested that the Commission consider reengaging Wayne State University immediately to discuss best practices of disseminating the study findings.

The Commission was unanimous in moving forward and preparing an outline with oversight by Commissioner Mozip, Commissioner Obeid, and Commissioner Dabaja by working with Wayne State University to develop an outline and presenting it at the December 5th meeting.

Cabinet Director Zimmer asked that Communications Director Jason Moon be invited to attend the December 5th meeting to facilitate and prepare Commissioners on appropriate talking points.

VII. NATIONAL ARAB ORCHESTRA

The National Arab Orchestra presented an update in their progress since the February 8th meeting.

MOTION: Commissioner Sukkar moves to continue funding the National Arab Orchestra with \$25,000 for the 2018/2019 budget year. Commissioner Dabaja seconds the motion. Motion passed unanimously.

VIII. 2019 MEETING SCHEDULE PROPOSAL

- Chair Manal will host March 1st meeting at 501 Bar and Grill.
- Commissioner Lina will host the June 7th meeting at The Annex.
- The September 19th is a Joint Ethnic Commission luncheon, Lansing.
- Commissioner Manna will host December 2nd meeting, Sterling Heights.

IX. OLD BUSINESS

None.

X. NEW BUSINESS

Coordinator Raya Fares stated that Richard Olivarez from the Michigan Agency for Energy will be providing energy saving tips in Arabic for the Commission to disseminate to the Middle Eastern community in Michigan.

Commissioner Hammoud expressed concerns that new legislation affecting the Middle East community are not being brought to CMEAA's attention as they have in the past. Additionally, Commissioner Hammoud would like to propose an avenue to bring state representatives to the table to better understand legislative collaboration.

Commissioner Manna suggested working with the lobbyists who work with community organizations such as ACCESS, CCF, and ACC on informing CMEAA commissioners on recent legislation affecting the community.

Commissioner Hussein reminded the Commission of the Joint Legislative Committee, which works with HLCOM, MAPAAC, and MONA to advocate legislation in favor of the ethnic communities.

XI. COMMENTS FROM THE PUBLIC

None.

XII. ADJOURNMENT

Meeting adjourned at 1:48 p.m. by Chair Saab.

Suzanne Sukkar, Secretary

Manal B. Saab, Chair

ETHNIC COMMISSIONS (PA 107 of 2017)
Commission on Middle Eastern Affairs (36690)
FY 18 Spending Plan

Categorize Authorized Approp OPER funding increase	FY 17 EST YTD	PLAN			ACTUAL EXPENDITURES				PROJECTION						
		Financial Plan	Adj	Adjusted Financial Plan	Current Month Expend.	YTD thru 9/30/2018		Projected Remaining* Expend.	Anticipated Full Year Expenditures		Anticipated Balance	Percent Of Plan	Percent Guideline		
						Expenses	Enumb.		Total	Expend.				Balance	
Available Appropriation:	100,000	125,000	21,359	146,359											
Salaries & Wages				0			0			0		0	0.0%	100.0%	
Longevity & Insurance				0			0			0		0	0.0%	100.0%	
Retirement & FICA				0			0			0		0	0.0%	100.0%	
Terminal Leave				0			0			0		0	0.0%	100.0%	
Travel				0			0			0		0	0.0%	100.0%	
Communications	579	600	29,309	69,309	47	570	570	0	570	30	95.0%	100.0%			
Contractual Services	38,603	40,000	25,200	69,309	5,232	68,402	68,403	0	68,403	906	98.7%	100.0%			
Supplies & Materials	111	200	25,000	25,200		25,000	25,000	0	25,000	200	99.2%	100.0%			
Equipment	-	-	0	0		0	0	0	0	0	0.0%	100.0%			
Grants	-	40,000	40,000	40,000		40,000	40,000	0	40,000	0	100.0%	100.0%			
Cost Allocations	7,296	7,509	7,509	7,509	2,146	7,509	7,509	0	7,509	(0)	100.0%	100.0%			
IT Costs - 6112	280	300	300	300		0	0	0	0	300	0.0%	100.0%			
TOTAL Expenditures	46,868	46,609	94,309	142,518	7,425	141,481	141,482	0	141,482	1,436					
Remaining Approp.	53,132	76,391	94,309	3,441						4,877					
SUMMARY BY FUNDING SOURCE															
GR/CP	1000	Appropriated	Adj	Rev. Appr.											
		125,000	21,359	146,359	141,481	1	141,482	141,482	0	141,482	4,877				
Total		125,000	21,359	146,359	141,481	1	141,482	141,482	0	141,482	4,877				

NOTES:
 DEC - Added \$25K for National Arab Orchestra sponsorship to the enc. Amount.
 JULY - Added \$40,000 for sponsorship for children and \$1,500 for sponsorship for MOVA Gala - not paid yet in July.
 Billed thru Remaining Balance FY 2017 In SIGMA 30-Sep-2018 PO AMT
 MOU with TIA 17-MOU-045 \$ 50,000.00 6,325 27,756.08 34,080.93
 CMEAA \$ 50,000.00 43,675 27,756.08 34,080.92
 WAYNE STATE UNIVERSITY 180000003792 \$ 100,000.00 12,650.00 87,350.00 55,512.15 66,161.85
 \$27,756 of Grant expenditures to be reimbursed via IFT 186 180000021152 exp credit from TIA, and is not included in the expense summary totals above.
 Prior Year Encumbrances \$87,350.31 did not convert - CMEAA's part will be paid from FY18 funds
 WSU PO reduced in JULY to actual FY18 expenditure amount - \$55,512.15 in FY 2018

RYAN Ann Fries
 Carry-Forward amount was \$ 21,359.36
 CF AMT 0641N7700075
 Added \$1,146.84 to PO 21,359.36
 CF Exp thru 30-Sep-2018 21,359.36
 Remaining Balance on CF enc. 30-Sep-2018 0.00
 Current Year exp thru 30-Sep-2018 17,786
 PO Balance 1

MIDDLE EASTERN AMERICANS IN MICHIGAN ECONOMIC CONTRIBUTIONS

Middle Eastern Americans (MEA) comprise 2.1% of the Michigan population and contribute 6.5% of economic contributions.

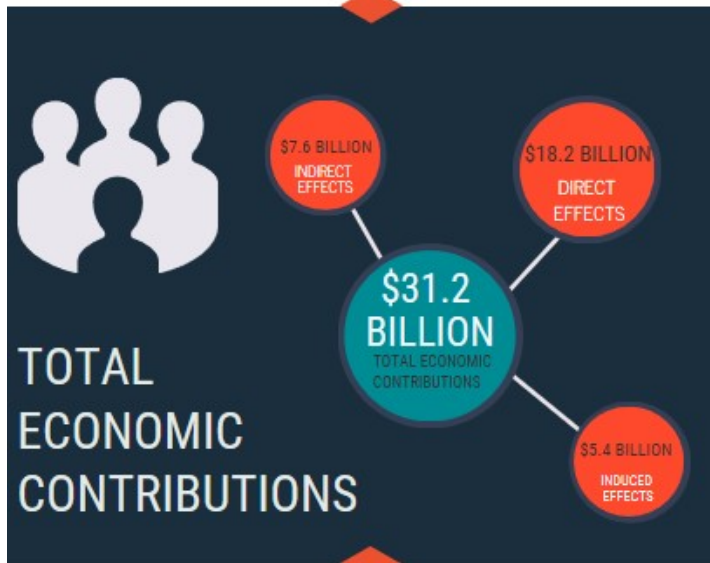
Percent of Population

Percent of Total State Output

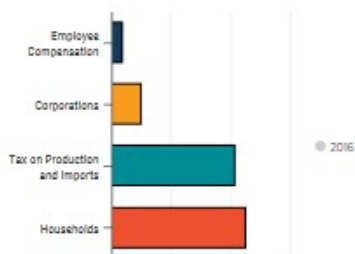


● MEA ● Non-MEA

● MEA ● Non-MEA



\$423 MILLION IN STATE AND LOCAL TAXES



ONE MEA JOB SUPPORTS 1.02 ADDITIONAL JOBS



Reads:

“THE RESULTS OBTAINED FROM THIS STUDY MAY BE INACCURATE BY AN UNDERESTIMATION OF ABOUT 30% DUE TO THE LACK OF UP-TO-DATE CENSUS INFORMATION DETAILING MIDDLE EASTERN IMMIGRATION IN MICHIGAN SINCE 2010.”

PowerPoint Slides sent by Charo Hulleza of Wayne State University: Summary of Results from Economic Impact Study



Middle Eastern Americans in Michigan Economic Contributions Study

*Key Findings
Fall 2018*

1



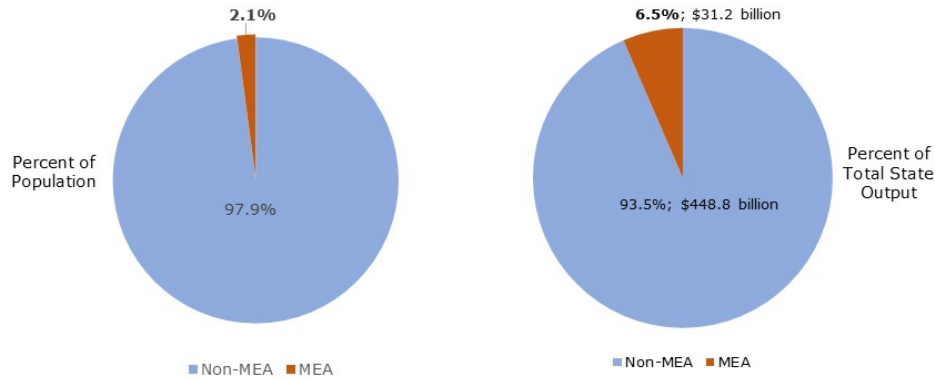
The Middle Eastern American (MEA) community in Michigan is associated with:

- **\$31.2 billion** in total state output, about 6.5% of state output;
- nearly \$423 million in total state and local taxes; and
- over 154,000 jobs in Michigan:
 - 76,153 in direct employment (jobs) held by MEAs - about 1.4% of the state's employment; and
 - **each MEA job supports 1.02 additional jobs** - an additional 77,790 jobs.

2



In Michigan, the rate of economic contributions of Middle Eastern Americans (MEA) outpace that of the non-MEA population.



Source: IMPLAN Model Estimates; U.S. Census ACS 2011-2015 PUMS
 Wayne State University / Center for Urban Studies

3



Economic Contributions: Estimation Approach

Total estimated* economic contributions of the Middle Eastern Americans (MEA) community is based on:

1. **Direct effects** – wage and salary earnings by employed MEA population.
2. **Indirect effects** – dollars spent by industry where MEA population is employed to support supplier industries (e.g., full service restaurant relies on local bakery for goods).
3. **Induced effects** – employed MEA population purchases local goods (e.g., full service restaurant employee spends money at local market or barber shop).

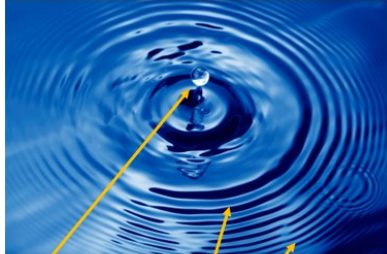
* Used an econometric model (IMPLAN) to estimate the economic contributions of the MEA population.

4



Economic Contributions: Total Effects

The Ripple Effect



Splash = **Direct Effect**
of MEA employment.

Ripples = **Indirect and Induced Effects**

- One ripple is employer purchases of local goods
- A second ripple is spending by people who are employed.

The total estimated economic contributions of the MEA community is then:

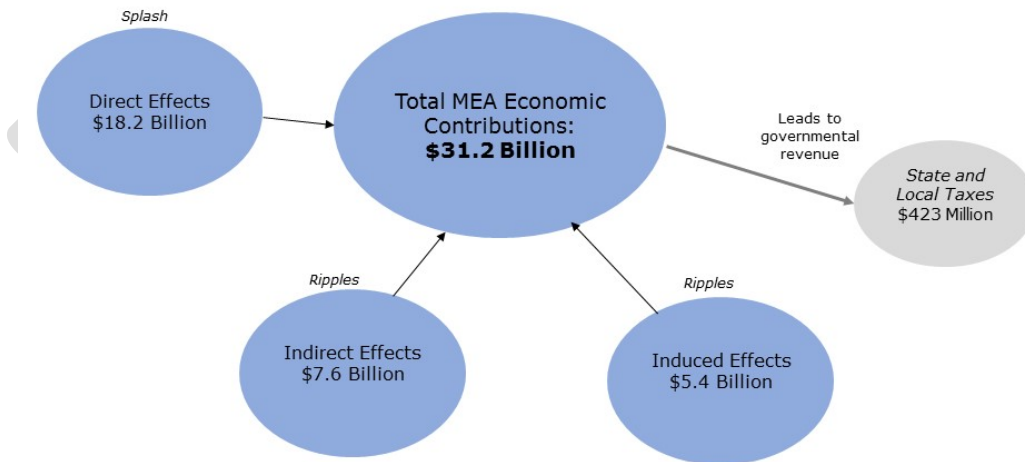
$$\text{Total Effects} = (\text{Direct Effects}) + (\text{Indirect Effects and Induced Effects})$$

Also, total economic effects give rise to state and local tax contribution through firms and employees in the form of Corporate Income Tax, Property Tax, User fees, etc.

5



Total Economic Contributions: Middle Eastern Americans in Michigan



Source: IMPLAN Model Estimates
 Wayne State University / Center for Urban Studies

6



Total Economic Contributions: Middle Eastern Americans in Michigan

Type of Impact	Employment	Labor Income*	Gross State Product ('value added')	Total State Output
Direct Effects	76,163	\$3.7 Billion	\$5.7 Billion	\$18.2 Billion
Indirect Effects	38,440	\$2.4 Billion	\$3.8 Billion	\$7.6 Billion
Induced Effects	39,530	\$1.7 Billion	\$3.0 Billion	\$5.4 Billion
Total	154,133	\$7.8 Billion	\$12.5 Billion	\$31.2 Billion

In addition, the total economic contribution leads to governmental revenue of nearly \$423 million in state and local taxes.

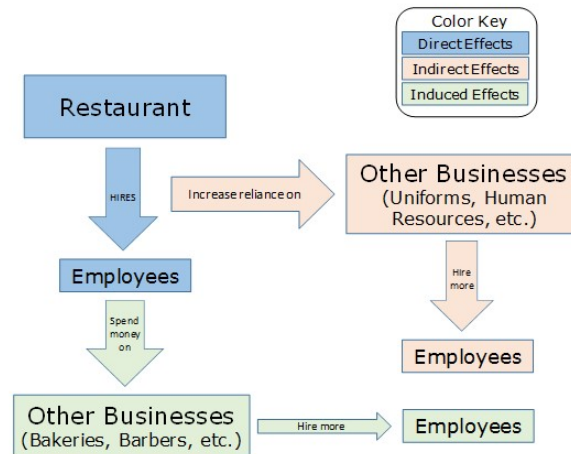
* Labor Income: All forms of income from employment, such as wages, benefits, and proprietor income.

Source: IMPLAN Model Estimates
 Wayne State University / Center for Urban Studies

7



Economic Contributions: An Example of Direct, Indirect, and Induced Effects



8