



GRETCHEN WHITMER
GOVERNOR

STATE OF MICHIGAN
DEPARTMENT OF LICENSING AND REGULATORY AFFAIRS
PUBLIC SERVICE COMMISSION

ORLENE HAWKS
DIRECTOR

SALLY A. TALBERG
CHAIRMAN

NORMAN J. SAARI
COMMISSIONER

February 1, 2019

Honorable Gretchen Whitmer
Governor of Michigan

Honorable Members of the Senate
Secretary of the Senate

Honorable Members of the House of Representatives
Clerk of the House of Representatives

The enclosed annual report for 2018, *Status of Electric Competition in Michigan*, is submitted on behalf of the Michigan Public Service Commission in accordance with Section 10u of 2000 PA 141, MCL 460.10u, and represents the 17th year of electric choice in Michigan. The report is available on the Commission's website.

As of December 2018, there were approximately 5,819 customers participating in the electric choice program (compared to 5,929 in 2017). This represents approximately 1,970 megawatts of electric demand, which is an increase of about 8 megawatts from 2017. There was a minimal increase in the total electric choice load in 2018 and electric choice participation remained slightly above 10% for each utility. The electric choice programs for Consumers Energy Company, DTE Electric Company, Upper Peninsula Power Company, Upper Michigan Energy Resource Corporation, and Cloverland Electric Cooperative were fully subscribed at the 10 percent cap throughout the year and there continues to be approximately 6,654 customers statewide in the queue to participate in the choice program if space becomes available.

To date, Michigan remains one of 20 states that had full or limited restructuring of the competitive electric market. Benchmark information comparing Michigan's electric retail rates to the 20 restructured states, 10 largest states, Midwest states and the national average can be found starting on page 7 of this report.

In 2018, the Commission issued multiple orders that adhere to the established framework for Michigan's electric customer choice programs and support the provisions of Public Act 141 of 2000, Public Acts 286 and 295 of 2008 and Public Act 341 of 2016.

Highlights of the report include:

- Choice Participation Data in Michigan
- Utility Specific 10 percent Cap Data
- Benchmark Data for Michigan's Rates

LARA is an equal opportunity employer/program.

Auxiliary aids, services and other reasonable accommodations are available upon request to individuals with disabilities.
7109 W. SAGINAW HIGHWAY • P.O. BOX 30221 • LANSING, MICHIGAN 48909 • www.michigan.gov/mpsc • 517-284-8100

February 1, 2019

Page 2

Statutory changes and policy decisions with respect to electric customer choice can have complex ramifications for the citizens and economy of Michigan. The Commission remains committed to working with legislative members and staff to ensure that Michigan's laws are implemented in a manner consistent with its policy objectives.

Sincerely,

A handwritten signature in cursive script, appearing to read "Sally A. Talberg".

Sally A. Talberg, Chairman
Michigan Public Service Commission

A handwritten signature in cursive script, appearing to read "Norman J. Saari".

Norman J. Saari, Commissioner
Michigan Public Service Commission



Status of Electric Competition in Michigan

Report for Calendar Year 2018

February 1, 2019

Sally A. Talberg, Chairman
Norman J. Saari, Commissioner

Contents

- Introduction i
- Status of Competition for Electric Supply..... 1
 - Overview..... 1
 - Michigan’s Electric Customer Choice Program..... 1
 - New Energy Legislation..... 2
 - Michigan Renewable Energy Program..... 2
 - Alternative Electric Suppliers 3
- Load Served through Electric Customer Choice Programs 3
 - Consumers Energy Electric Customer Choice Program 3
 - DTE Electric Company Electric Customer Choice Program 4
 - Upper Peninsula Power Company (UPPCo) Electric Customer Choice Program 4
 - Upper Michigan Energy Resources Corporation (UMERC) Electric Customer Choice Program 5
 - Cloverland Electric Cooperative Electric Customer Choice Program 6
 - Indiana Michigan Power Company Electric Customer Choice Program..... 6
- Benchmarking Michigan’s Electric Prices 7
 - Residential Rates..... 7
 - Commercial Rates..... 12
 - Industrial Rates 14
- Commission Action Related to Electric Choice and Customer Protections 17
- Commission Action on Customer Education..... 18
- Recommendations for Legislation..... 18
- APPENDIX 1 – Figures 1 – 13..... 19
- APPENDIX 2 – Commission Orders 31
- APPENDIX 3 – Alternative Electric Suppliers..... 36

Introduction

The Customer Choice and Electricity Reliability Act (Public Act 141 of 2000, referred to throughout as Act 141) requires the Michigan Public Service Commission (Commission or MPSC) to file a report with the Governor and the Legislature by February 1 each year. The report is to include a discussion of the following topics, pursuant to MCL 460.10u:

- a. The status of competition for the supplying of electricity in Michigan.
- b. Recommendations for legislation, if any.
- c. Actions taken by the Commission to implement measures necessary to protect consumers from unfair or deceptive business practices by utilities, alternative electric suppliers, and other market participants.
- d. Information regarding consumer education programs approved by the Commission to inform consumers of all relevant information regarding the purchase of electricity and related services from alternative electric suppliers.

An important goal of Act 141 is to have competition within the electric industry by offering Michigan customers the opportunity to purchase electric generation services from their incumbent utility or an Alternative Electric Supplier (AES). The Commission does not regulate the prices charged by an AES for its services. Customers may choose between an unregulated AES rate or a regulated utility rate.

Public Act 286 of 2008 (Act 286) was enacted on October 6, 2008 and amended Act 141. Section 10a(1)(a) of Act 286, MCL 460.10a, provides that no more than 10 percent of an electric utility's average weather-adjusted retail sales for the preceding calendar year may take service from an alternative electric supplier at any time.¹ On December 21, 2016, Public Act 341 (Act 341) of 2016 was signed and became effective on April 20, 2017. Act 341 amended Act 286. The Commission outlined the specific procedures pertaining to the implementation of the 10 percent cap and established a cap tracking system that utilities are required to make available online.²

¹ With the exception of Section 10a(1)(d) of Act 286 which excludes iron ore mining or processing facilities.

² Order dated April 28, 2018 in Case No. U-15801.

Status of Competition for Electric Supply

Overview

Retail Open Access (referred to throughout as “ROA”, “electric customer choice” or “electric choice”) for all customers of Michigan investor-owned electric utilities took effect on January 1, 2002. AESs currently serve electric choice customers in the Consumers Energy Company (Consumers Energy), DTE Electric Company (DTE Electric), Upper Peninsula Power Company (UPPCo), Upper Michigan Energy Resources Corporation (UMERC), and Cloverland Electric Cooperative (Cloverland) territories. Indiana Michigan Power Company (I&M) has not had customers participating in electric choice since April 2013.

Michigan is one of 20 jurisdictions that had full or limited restructuring of retail electric markets in 2018.³ In Michigan, Act 286 caps electric choice participation at 10 percent of an electric utility’s average weather-adjusted retail sales for the preceding year. The 10 percent cap is reset annually to reflect the average weather-adjusted retail sales for the preceding year.

Specific information pertaining to the status of electric choice participation for each utility can be found at their respective websites.⁴

Michigan’s Electric Customer Choice Program

Electric customer choice is available to all customers of regulated electric utilities, excluding members of electric cooperatives with loads of less than one megawatt (MW).⁵ Michigan’s current retail electric market maintains regulation of most utility generation and distribution while allowing for competitive energy supply.

As of December 2018, there were approximately 5,819 customers participating in the electric choice programs (compared to 5,929 in 2017). This represents approximately 1,970 MW of electric demand, which is an increase of about 8 MW from 2017. As of December 2018, approximately 6,654 customers remain in the queue. There was a minimal increase in the total electric choice load in 2018 and electric choice participation remained above 10% for each utility.

³ Figure 1 (Appendix 1, p. 20).

⁴ https://www.michigan.gov/mpsc/0,4639,7-159-16377_17111-229733--,00.html

⁵ MCL 460.10x and MCL 460.10y outline different requirements for implementation for customer choice for cooperatively owned and municipal electric utilities. MCL 460.10x allows any retail customer of a rural electric cooperative with a peak of 1 megawatt or above to select an alternative electric supplier. MCL 460.10y provides that the governing body of a municipally owned utility determines whether it will permit choice programs in its service territory.

New Energy Legislation

Public Acts 341 and 342 were passed on December 15, 2016, and signed by Governor Rick Snyder on December 21, 2016. Act 341 updates Michigan's energy laws relating to utility rate cases, electric customer choice, certificate of necessity, and electric capacity resource adequacy, and establishes an integrated resource planning process. Act 341 amended Public Act 3 of 1939 and Public Act 286 of 2008. On September 29, 2009, the Commission adopted procedures, regarding the allocation of the amount of load to be served by AESs. The Commission approved changes to these procedures pursuant to Act 341, which are attached as Appendix A to the April 28, 2017 order in Case No. U-15801.⁶

Pursuant to MCL 460.10a(1)(c), the Commission issued orders adjusting the choice caps to zero for any utility serving fewer than 200,000 Michigan customers and that did not have any load served by an AES during the four-year period of April 20, 2013, to April 20, 2017. These orders were issued on July 12, 2017 for 12 utilities⁷ and directed that the cap for each utility automatically be reset to 10% on February 1, 2019.

Additionally, every Michigan licensed AES will be subject to the capacity demonstration and state reliability mechanism (SRM) provisions outlined in Section 6w of Act 341. Section 6w requires all electric providers, including AESs, to demonstrate to the MPSC that they have enough resources to serve the anticipated needs of their customers four years forward. If an AES cannot or chooses not to arrange generating capacity to meet the new requirement, all or a portion of its load would be subject to an SRM capacity charge. The SRM capacity charge is set by the MPSC and is paid to the utility in exchange for the utility serving as the provider of last resort for capacity service.

Michigan Renewable Energy Program

In accordance with Public Act 295 of 2008 (Act 295), the Commission is required to review electric provider renewable energy plans every two years. Public Act 342 (Act 342) of 2016 amended Act 295 and became effective April 20, 2017. Section 22 requires the Commission to review each electric provider's plan within one year after the effective date of Act 342. In an order dated March 28, 2017 in Case No. U-15825 et al., the Commission terminated the requirement for the biennial review and established new REP filing dates pursuant to Section 22. All AESs were required to file Renewable Energy Plans or letters to their assigned dockets for review by December 15, 2017.

⁶ Order dated April 28, 2017 in Case No. U-15801.

⁷ These utilities include: Alger Delta Cooperative Electric Association (U-18372), Alpena Power Company (U-16086), Bayfield Electric Cooperative (U-18373), Cherryland Electric Cooperative (U-18374), Great Lakes Energy Cooperative (U-18376), Indiana Michigan Power Company (U-16090), HomeWorks Tri-County Electric Cooperative (U-18377), Midwest Energy Cooperative (U-18378), Northern States Power Company (U-16091), Thumb Electric Cooperative (U-18379), Presque Isle Electric & Gas Co-Op (U18388), Ontonagon County Rural Electrification Association (U-18389).

During 2018, the Commission issued orders indicating that all AESs were in compliance with the requirements of Act 295 and 342.⁸

Alternative Electric Suppliers

There were 24 licensed AESs with 9 of those actively serving customers as of December 2018.⁹ The Commission did not issue or revoke any new AES licenses during 2017 and only one AES requested a voluntary relinquishment of their license.

Load Served through Electric Customer Choice Programs

Commercial and industrial customers accounted for almost all of the participation in the electric choice programs during 2018. Typical choice participants are large industrial manufacturers and mid-size commercial customers including retailers, restaurants, healthcare facilities, school systems and other service providers. The number of residential choice customers participating in the electric choice program is negligible.

Consumers Energy Electric Customer Choice Program

The number of customers and the electric demand served by each AES in the Consumers Energy service territory at the end of each year is shown in Figure 2 (Appendix 1, p. 21). The electric choice load served in the Consumers Energy service territory at year-end 2018 totaled 746 MW. This compares to 738 MW in 2017. There were 992 customers served by AESs at year-end 2018 compared to 1,000 in 2017.¹⁰

Additional information depicting trends in the Consumers Energy electric customer choice program is included in Appendix 1. Figure 3 (Appendix 1, p. 22) shows the number of customers participating and the load served on a monthly basis from July 2017 through December 2018.

Below is a summary of cap related data for Consumers Energy for 2016 – 2018. To date, Consumers Energy is fully subscribed at the 10 percent cap.

Consumers Energy			
	2016	2017	2018
Weather-Adjusted Retail	36,912,944 MWh	37,015,009 MWh	37,172,389 MWh
Participation Level	3,939,197 MWh	3,875,345 MWh	3,742,516 MWh
Participation Percent	10.67%	10.47%	10.07%
Customers in Service	1,010	1,000	992
Customers in Queue	4,147	3,967	3,703
Total Load in Queue	6,348,324 MWh	6,333,019 MWh	6,018,141 MWh
<i>Participation Percent w/o Cap</i>	<i>27.87%</i>	<i>27.57%</i>	<i>26.26%</i>

⁸ See Appendix 2

⁹ See Appendix 1: Figure 2 (p. 21), Figure 4 (p. 23), Figure 6 (p. 25), Figure 8 (p. 27), Figure 10 (p. 29)

¹⁰ Figure 2 (Appendix 1, p. 21)

Consumers Energy experienced a decrease in the number of customers in the queue as well as the load from 2017 to 2018. Hypothetically, if the cap did not exist, choice participation would be approximately 26 percent.

DTE Electric Company Electric Customer Choice Program

The number of customers and the electric demand served by each AES in the DTE Electric service territory at the end of the year is shown in Figure 4 (Appendix 1, p. 23). The electric choice load served in the DTE Electric service territory at year-end 2018 totaled 1,132 MW compared to 1,134 MW in 2017. The number of customers served by AESs totaled 4,681 at year-end 2018 compared to 4,779 in 2017.¹¹

Additional information depicting trends in the DTE Electric’s electric customer choice program is included in Appendix 1. Figure 5 (Appendix 1, p. 24) shows the number of customers participating and the load served on a monthly basis from June 2017 through December 2018.

Below is a summary of cap related data for DTE Electric for 2016 – 2018. To date, DTE Electric is fully subscribed at the 10 percent cap.

DTE Electric Company			
	2016	2017	2018
Weather-Adjusted Retail	46,962,447 MWh	47,551,179 MWh	47,205,934 MWh
Participation Level	4,822,056 MWh	4,897,193 MWh	4,786,870 MWh
Participation Percent	10.27%	10.30%	10.14%
Customers in Service	4,906	4,779	4,681
Customers in Queue	3,574	3,008	2,891
Total Load in Queue	4,203,835 MWh	4,027,772MWh	3,426,119 MWh
<i>Participation Percent w/o</i>	<i>19.22%</i>	<i>18.77%</i>	<i>17.40%</i>

DTE Electric experienced a decrease in both the number of customers and load in the queue from 2017 to 2018. Hypothetically, if the cap did not exist, choice participation would be approximately 17 percent.

Upper Peninsula Power Company (UPPCo) Electric Customer Choice Program

The number of customers and the electric demand served by each AES at the end of the year is shown in Figure 6 (Appendix 1, p. 25). The electric choice load served in the UPPCo service territory at year-end 2018 totaled 13.491 MW compared to 14.19 MW in 2017. The number of customers served at year-end 2018 decreased from 62 at year-end 2017 to 58.¹²

¹¹ Figure 4 (Appendix 1, p. 23)

¹² Figure 6 (Appendix 1, p. 25)

Additional information depicting trends in the UPPCo electric customer choice program is included in Appendix 1. Figure 7 (Appendix 1, p. 26) shows the number of customers participating and the load served on a monthly basis from July 2017 through December 2018.

Below is a summary of cap related data for UPPCo for 2016 – 2018. The current level of choice participation is approximately 10.65 percent. Hypothetically, if the cap did not exist, choice participation would be approximately 16 percent.

Upper Peninsula Power Company			
	2016	2017	2018
Weather-Adjusted Retail	867,410 MWh	813,443 MWh	811,446 MWh
Participation Level	80,299 MWh	87,261 MWh	86,447 MWh
Participation Percent	9.26%	10.73%	10.65%
Customers in Service	62	62	58
Customers in Queue	63	63	63
Total Load in Queue	41,472 MWh	41,472 MWh	41,472
<i>Participation Percent w/o Cap</i>	<i>14.04%</i>	<i>15.83%</i>	<i>15.76%</i>

Upper Michigan Energy Resources Corporation (UMERC) Electric Customer Choice Program

On December 9, 2016, the Commission approved a settlement agreement in Case No. U-18061¹³ that permitted the creation of a new Michigan-only jurisdictional utility in the Upper Peninsula. UMERC was established on January 1, 2017 as a new Michigan-only jurisdictional utility in the Upper Peninsula. Former WEPCo and WPSC customers are now being served by UMERC.

The number of customers and the electric demand served by each AES at the end of the year is shown in Figure 8 (Appendix 1, p. 27). The electric choice load served in the UMERC service territory at year-end 2018 totaled 68.9 MW compared to 67.7 MW in 2017. The number of customers served at year-end 2018 stayed the same as the 2017 year-end total at 87.¹⁴

Additional information depicting trends in the UMERC electric customer choice program is included in Appendix 1. Figure 9 in Appendix 1 (p. 28) shows the number of customers participating and the load served on a monthly basis from July 2017 through December 2018.

Below is a summary of cap related data for UMERC for 2016 – 2018. The current level of choice participation is approximately 28.75% percent. Currently, the Tilden Mining Company (Tilden) load is still being served by WEPCo until it is planned to be transferred to UMERC beginning with Planning Year 2019-20. Until the Tilden load is transferred to UMERC, UMERC's ROA load will

¹³ See Case No. U-18061

¹⁴ Figure 8 (Appendix 1, p. 27)

continue to exceed the 10 percent cap. After the Tilden load is transferred to UMERC, UMERC's ROA load will be more aligned with the 10 percent cap.

Upper Michigan Energy Resources Corporation			
	2016*	2017	2018
Weather-Adjusted Retail Sales	2,844,247 MWh	883,112 MWh	890,764 MWh
Participation Level	263,434 MWh	263,302 MWh	267,121
Participation Percent	9.26%	29.82%	29.99%
Customers in Service	86	87	87
Customers in Queue	0	1	1
Total Load in Queue	0 MWh	119,144 MWh	124,826 MWh
<i>Participation Percent w/o Cap</i>	<i>N/A</i>	<i>43.30%</i>	<i>44.00%</i>

*The numbers for 2016 are the total of WEPCo and WPSC. All ROA customers of WEPCO and WPSC were transferred to UMERC as ROA customers on January 1, 2017. See Case No. U-[18061](#)

Cloverland Electric Cooperative Electric Customer Choice Program

Beginning in December 2016, Cloverland had one customer taking electric choice. Cloverland's Electric Choice Program is fully subscribed with participation at 10 percent. The electric choice load served in the Cloverland service territory at year-end 2018 totaled 8.7 MW, as shown in Appendix 1, Figure 10 (p. 29).

Cloverland Electric Cooperative		
	2017	2018
Weather-Adjusted Retail Sales	691,989 MWh	764,399 MWh
Participation Level	70,128 MWh	76,440 MWh
Participation Percent	10.13%	10.0%
Customers in Service	1	1
Customers in Queue	0	0
Total Load in Queue	0 MWh	0 MWh
<i>Participation Percent w/o Cap</i>	<i>N/A</i>	<i>10.0%</i>

Indiana Michigan Power Company Electric Customer Choice Program

In February 2012, Case No. U-17032 was initiated by the Commission to establish a state compensation mechanism for AES capacity in I&M's Michigan service territory. In May 2012, customers began taking choice service in I&M's service territory and by June 2012, I&M's choice program was fully subscribed at the 10 percent cap. In September 2012, the Commission approved the creation of a state compensation mechanism for AES capacity in I&M's Michigan service territory in Case No. U-17032. Since April 2013, there has been no choice participation in I&M's territory. In April 2018, the Commission issued an order updating the state reliability mechanism capacity charge in Case No. U-18370. Since this time, more than 10 percent of I&M's

load has been placed in its queue.¹⁵ Because I&M’s cap amount has been set to zero by commission order in Case No. U-16090, any customer interested in taking electric choice service through an AES will remain in the queue until the cap is reset to 10 percent on February 1, 2019 pursuant to the commission order and MCL 460.10a(1)c.

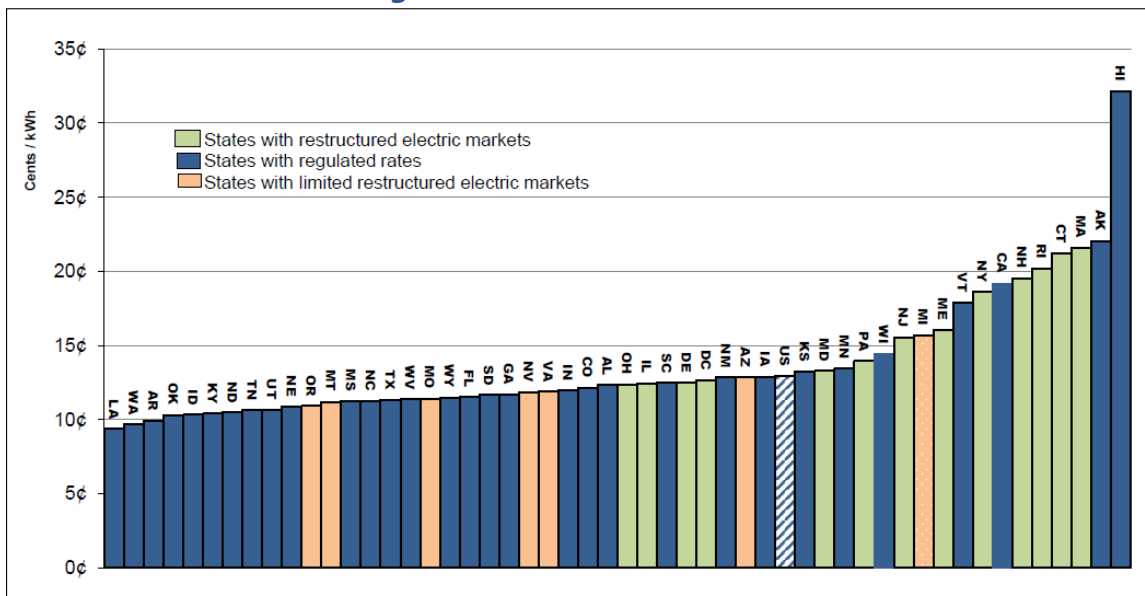
Benchmarking Michigan’s Electric Prices¹⁶

This report provides benchmark data that compares Michigan’s electric prices to those of other jurisdictions based on customer class. The data shown in the following figures for 2018 reflects January through August 2018.

Residential Rates

The figures below reflect the 2018 and 2000 average residential retail rates. In 2018, Michigan’s average residential retail rates ranked seventh highest among the 20 jurisdictions with some type of restructured market at \$0.1566/kWh. Michigan ranked fifth lowest in 2000.

Average Residential Retail Price 2018

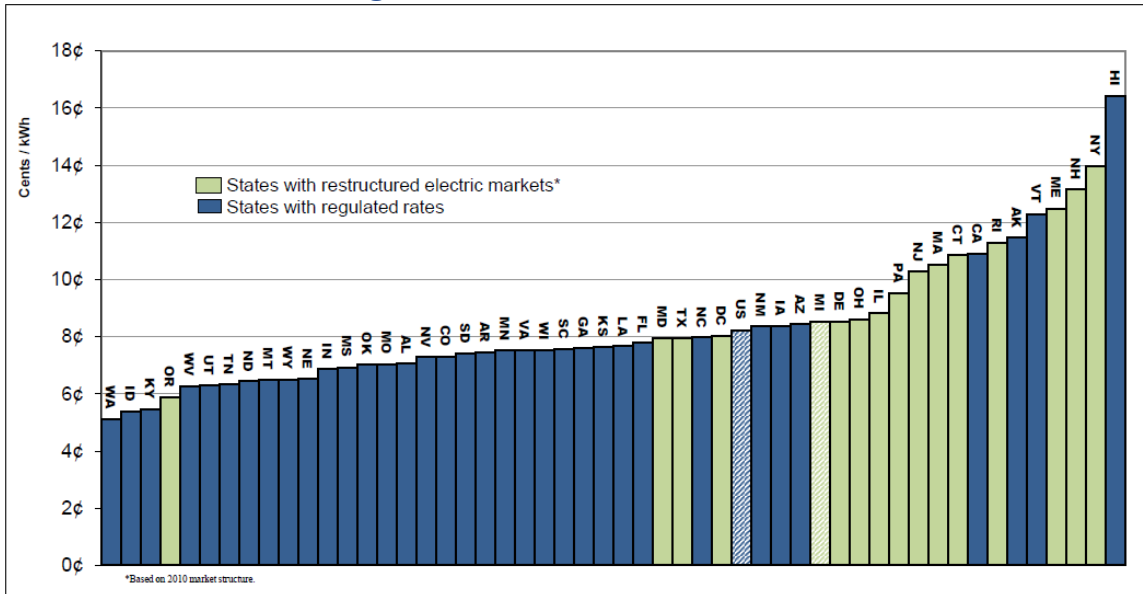


Source, http://www.eia.doe.gov/cneaf/electricity/page/sales_revenue.xls, Current and Historical Monthly Retail Sales, Revenues, Average Retail Price by State and By Sector (Form EIA-826). 2018*, 2018 data is only through August and will change.

¹⁵ <https://www.indianamichiganpower.com/account/service/choice/CapacityTracking.aspx>

¹⁶ Benchmarking data is sourced from the U.S. Energy Information Administration (EIA). EIA’s data may include some minor inconsistencies and is subject to change retroactively.

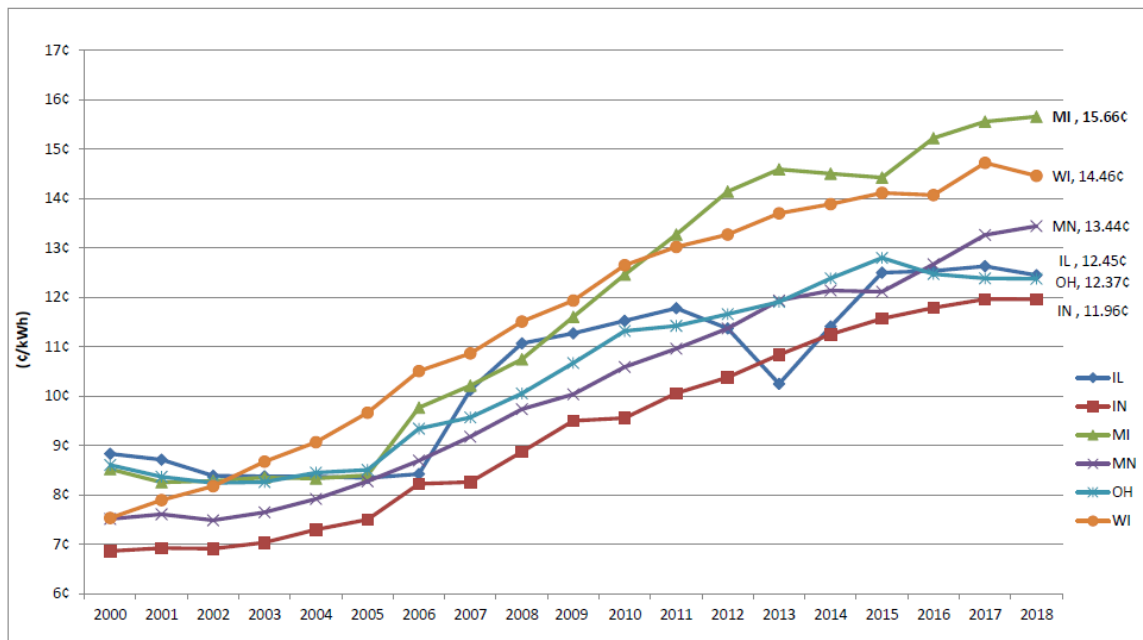
Average Residential Retail Price in 2000



Source, http://www.eia.doe.gov/cneaf/electricity/page/sales_revenue.xls, Current and Historical Monthly Retail Sales, Revenues, Average Retail Price by State and By Sector (Form EIA-826). *Based on 2010 market structure.

The figure below reflects the average residential retail rates for neighboring Midwest states from 2000 through 2018. In 2018, Michigan’s average residential retail rates ranked the highest among six Midwest states at \$0.1566/kWh. Michigan ranked third highest in 2000.

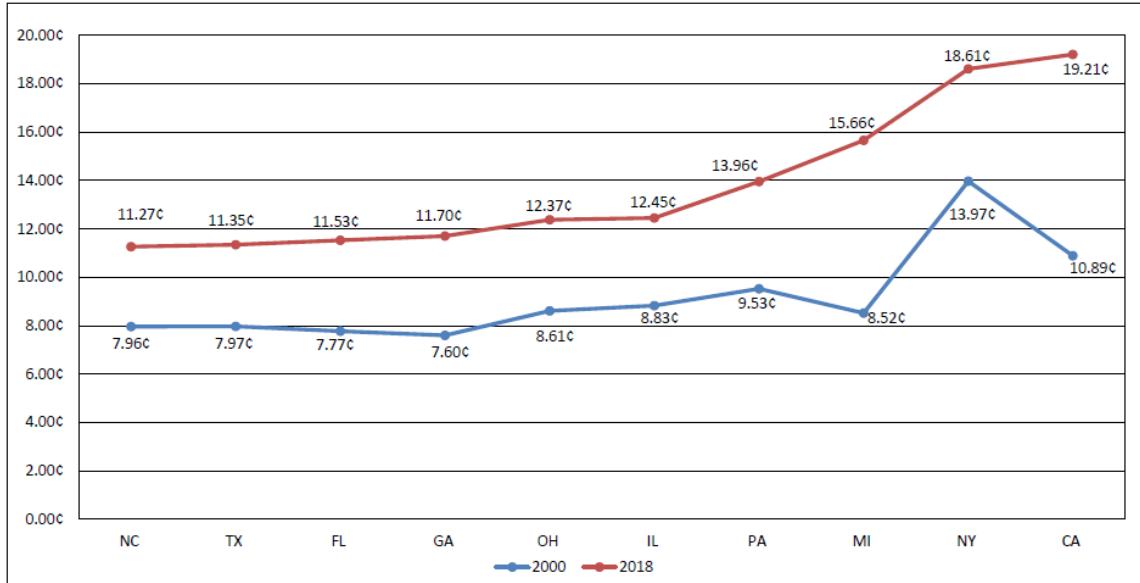
Average Residential Retail Rates For Midwest 2000-2018*



Source, http://www.eia.doe.gov/cneaf/electricity/page/sales_revenue.xls, Current and Historical Monthly Retail Sales, Revenues, and Average Retail Price by State and By Sector (Form EIA-826). 2018*, 2018 data is only through August and will change.

The figure below compares the average residential retail rates for the 10 largest states by population for 2000 and 2018. Michigan's rates were third highest among these states in 2018 at \$0.1566/kWh. Michigan ranked fifth lowest in 2000.

Average Residential Rates for 10 Largest States – 2000 vs. 2018

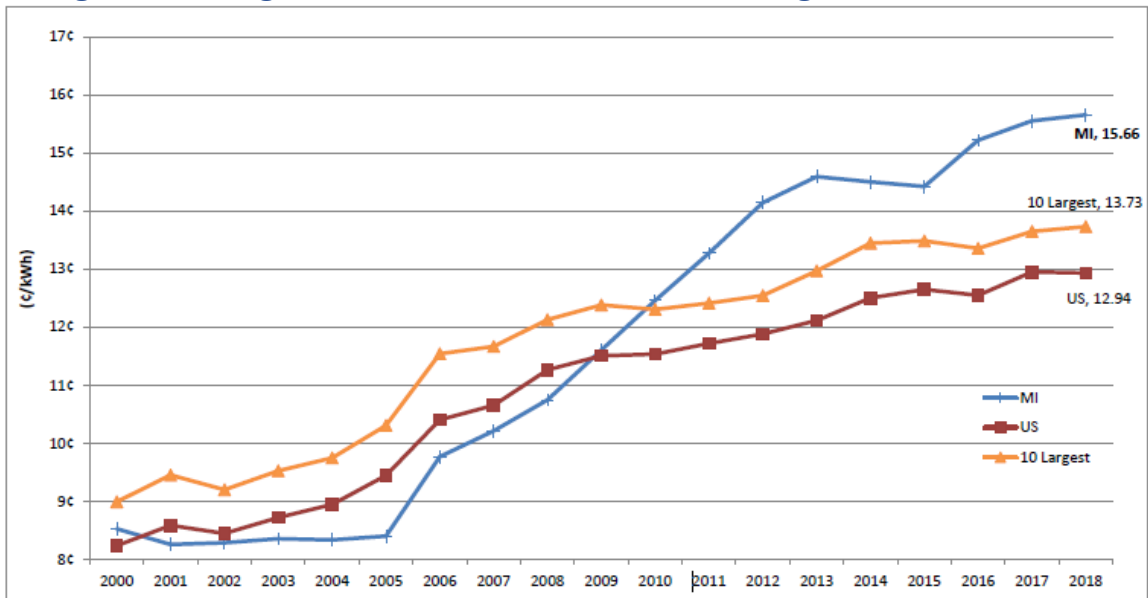


Source, http://www.eia.doe.gov/cneaf/electricity/page/sales_revenue.xls, Current and Historical Monthly Retail Sales, Revenues, and Average Retail Price by State and By Sector (Form EIA-826). *2018 data is through August and will change.

The figure below reflects the weighted average residential retail rates for the 10 largest states, as well as the national average, from 2000 to 2018.¹⁷ Michigan's weighted average residential retail rate was below the national average from 2001 to 2008 and has been above the national average since 2009. Similarly, Michigan was below the 10 largest state average from 2000 to 2009 and has been above the 10 largest state average since 2010.

¹⁷ Weighted average is determined by taking total revenue divided by total sales.

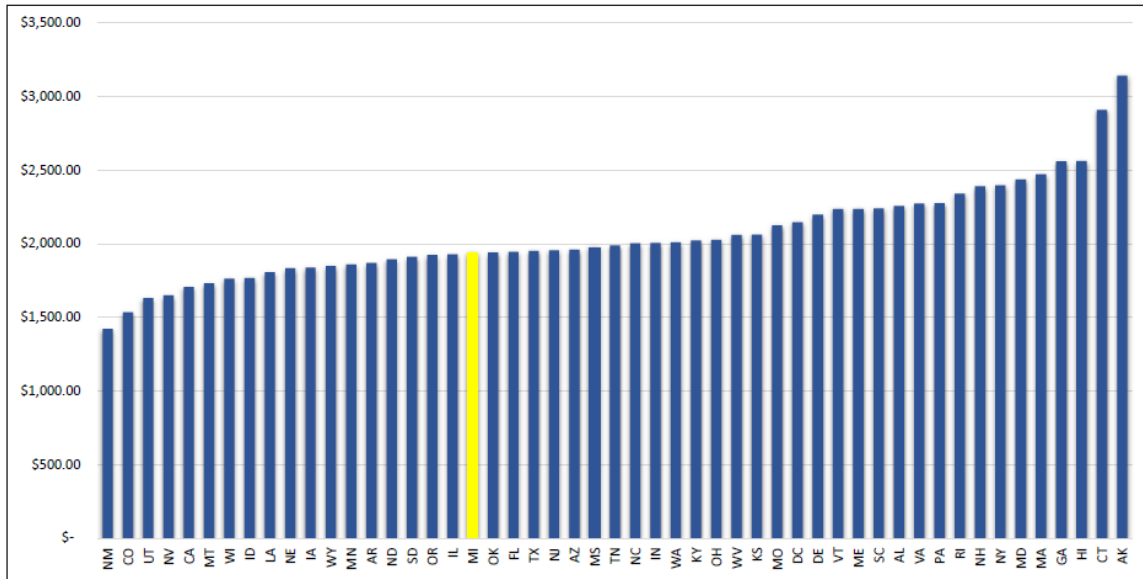
Weighted Average Residential Retail Rate for 10 Largest States 2000-2018*



Source, http://www.eia.doe.gov/cneaf/electricity/page/sales_revenue.xls, Current and Historical Monthly Retail Sales, Revenues, and Average Retail Price by State and by Sector (form EIA-826). 2018*, the 2018 data is only through August and will change.

The figure below reflects combined average residential electric and natural gas bills. While average rates are important, the actual amount paid by residential customers in bills for electric and natural gas service provides a sense of the impact of energy costs on Michigan residents relative to customers in other states. Utility services are typically billed based on usage per unit (e.g., one kilowatt-hour of electricity), so states with higher energy usage have more unit sales over which to recover energy costs, and may end up with lower average rates (total revenues divided by total sales) as a result. Overall average bills (total revenues divided by total customers) may actually be higher when compared to other states.

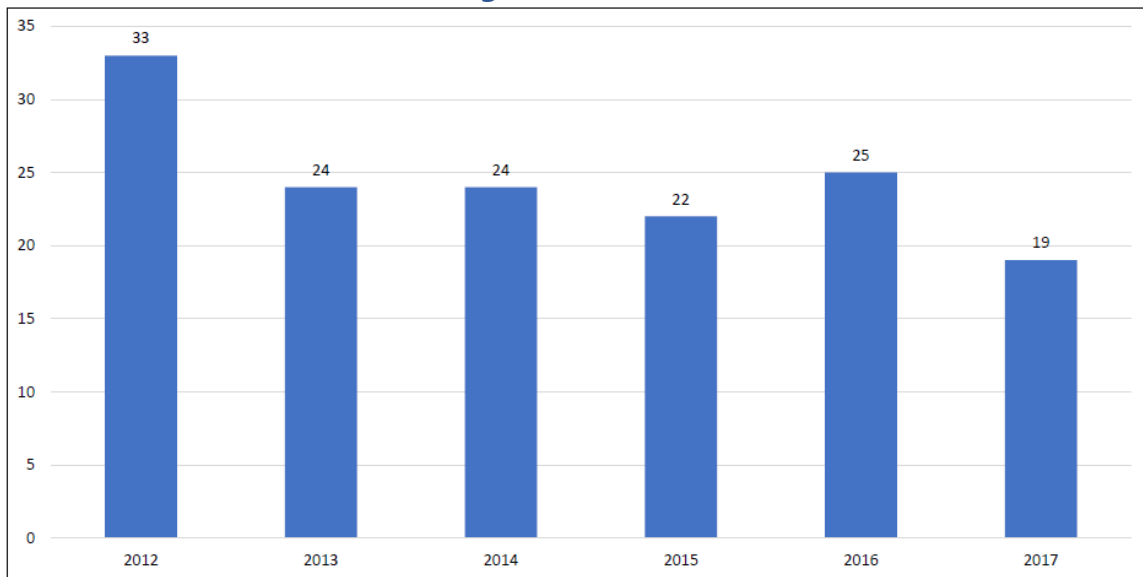
2017 Average Residential Electric and Natural Gas Bill



Source, <https://www.eia.gov/> - Data through 2017

The figure below reflects Michigan's combined average residential electric and natural gas bill rankings from 2012 through 2017 compared to all other states. In 2019, Michigan had the 19th lowest combined bills.

Michigan Total Bill Rank

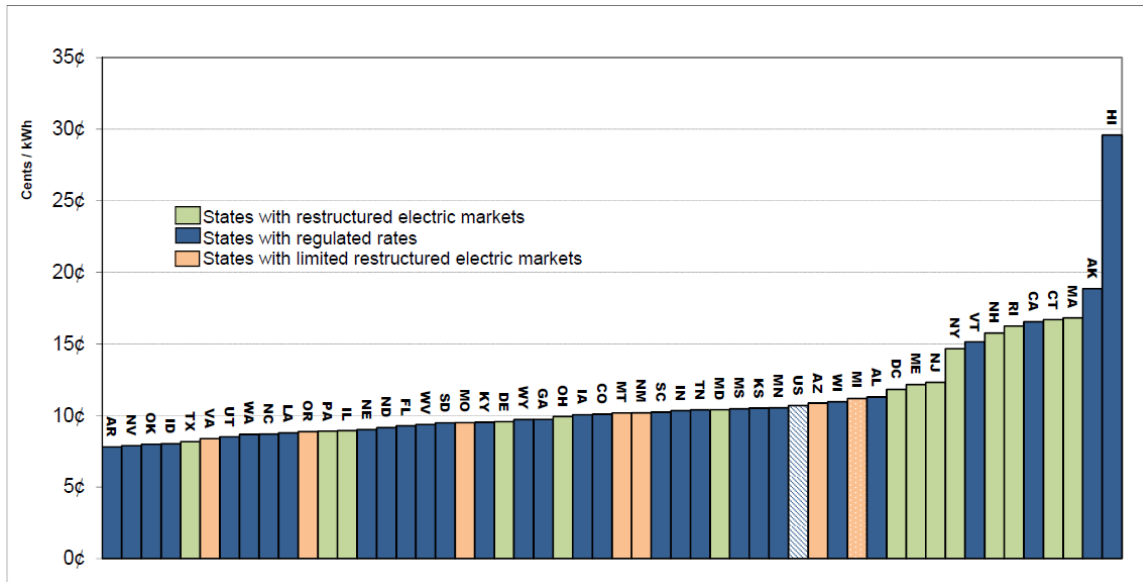


Source, <https://www.eia.gov/> - Data through 2017

Commercial Rates

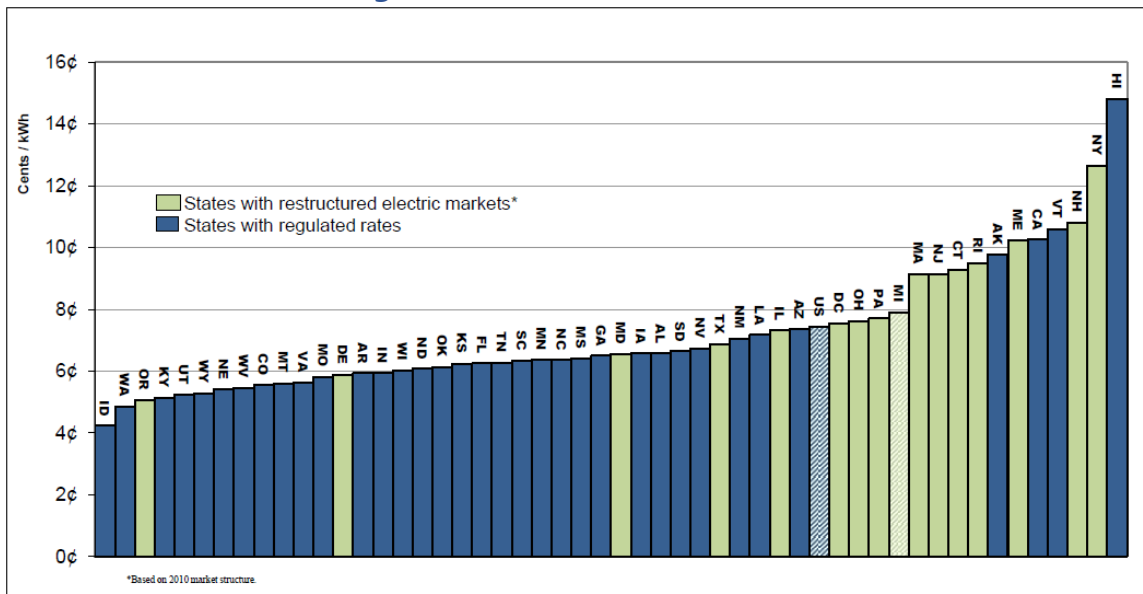
The figures below reflect the 2018 and 2000 average commercial retail rates. In 2018, Michigan's commercial average retail rates ranked ninth highest of the jurisdictions with some type of restructured market at \$0.1119/kWh. Michigan ranked eighth highest in 2000.

Average Commercial Retail Price 2018*



Source, http://www.eia.doe.gov/cneaf/electricity/page/sales_revenue.xls, Current and Historical Monthly Retail Sales, Revenues, Average Retail Price by State and By Sector (Form EIA-826). 2018*, 2018 data is only through August and will change.

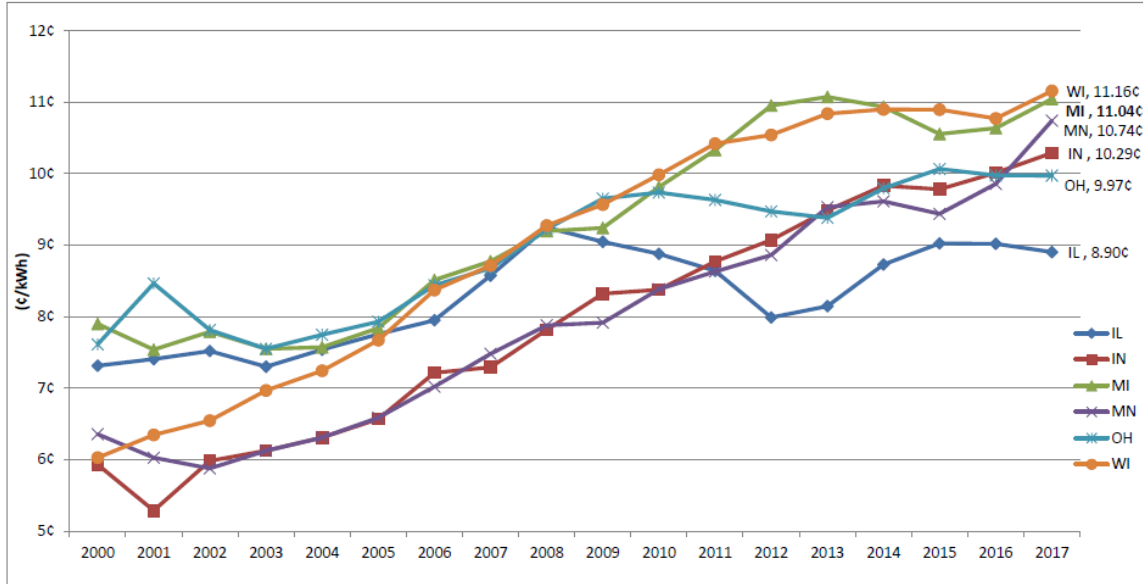
Average Commercial Retail Price 2000*



Source, http://www.eia.doe.gov/cneaf/electricity/page/sales_revenue.xls, Current and Historical Monthly Retail Sales, Revenues, Average Retail Price by State and By Sector (Form EIA-826). *Based on 2010 market structure.

The figure below reflects the average commercial retail rates for neighboring Midwest states from 2000 through 2018. In 2018, Michigan's average commercial retail rates ranked the highest among six Midwest states at \$0.1119/kWh. Michigan ranked the highest in 2000.

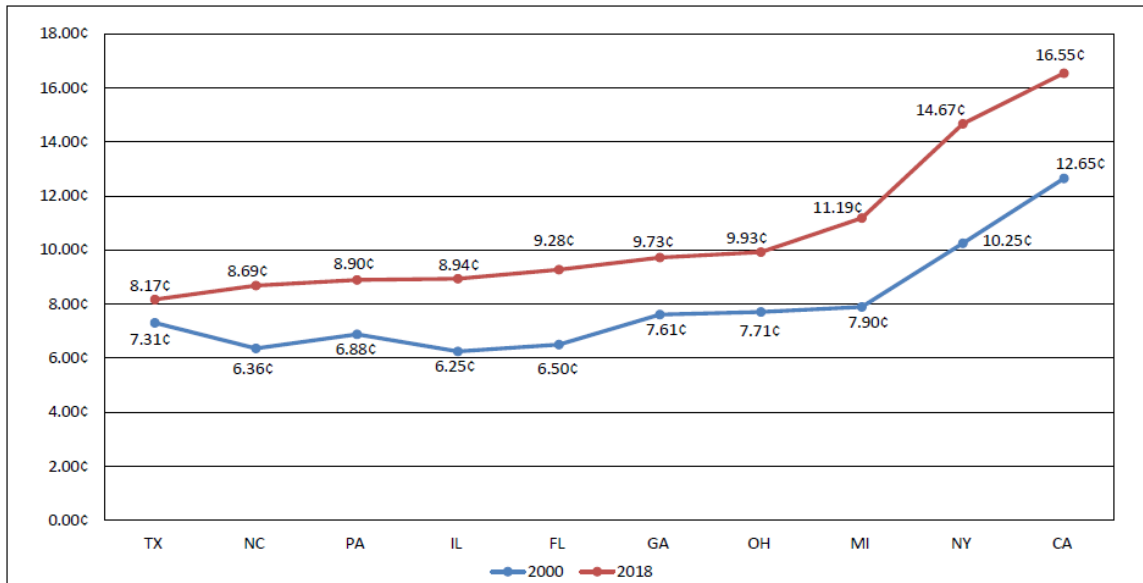
Average Commercial Retail Rates For Midwest 2000-2018*



Source, http://www.eia.doe.gov/cneaf/electricity/page/sales_revenue.xls, Current and Historical Monthly Retail Sales, Revenues, and Average Retail Price by State and By Sector (Form EIA-826). 2018*, 2018 data is only through August and will change.

The figure below compares the average commercial retail rates for the 10 largest states by population for 2000 and 2018. Michigan's rates were third highest among these states in 2018 at \$0.1119/kWh. Michigan also ranked third highest in 2000.

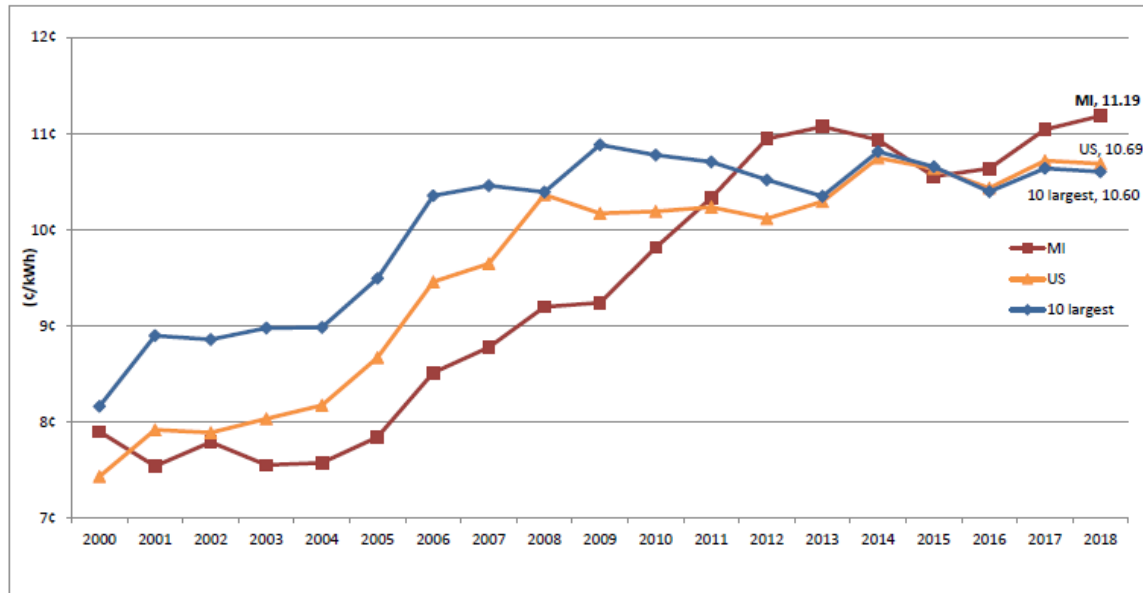
Average Commercial Rates for 10 Largest States – 2000 vs. 2018



Source, http://www.eia.doe.gov/cneaf/electricity/page/sales_revenue.xls, Current and Historical Monthly Retail Sales, Revenues, and Average Retail Price by State and By Sector (Form EIA-826). *2018 data is through August.

The figure below reflects the weighted average commercial retail rates for the 10 largest states, as well as the national average, from 2000 to 2018. Michigan's weighted average commercial retail rates were below the national average from 2001 to 2010 and surpassed the national average in 2011 and remains above in 2018 at \$0.1119/kWh. Michigan was below the 10 largest state average from 2000 to 2011 and surpassed the 10 largest state average in 2012 and remained above in 2018.

Weighted Average Commercial Retail Rate for 10 Largest States 2000-2018*

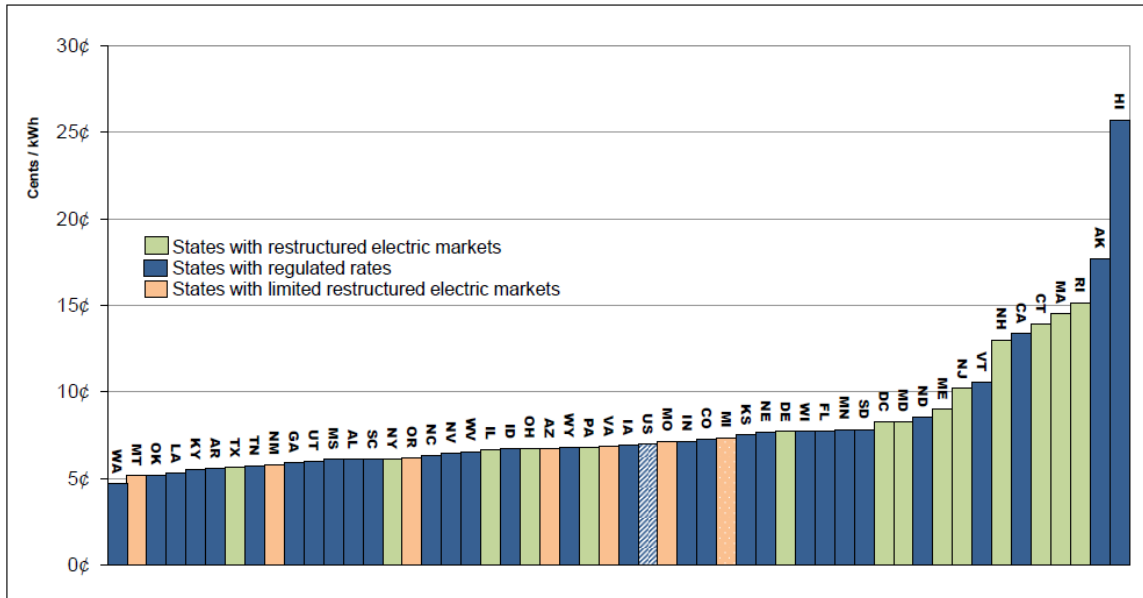


Source, http://www.eia.doe.gov/cneaf/electricity/page/sales_revenue.xls, Current and Historical Monthly Retail Sales, Revenues, and Average Retail Price by State and by Sector (form EIA-826). 2018*, the 2018 data is only through August and will change.

Industrial Rates

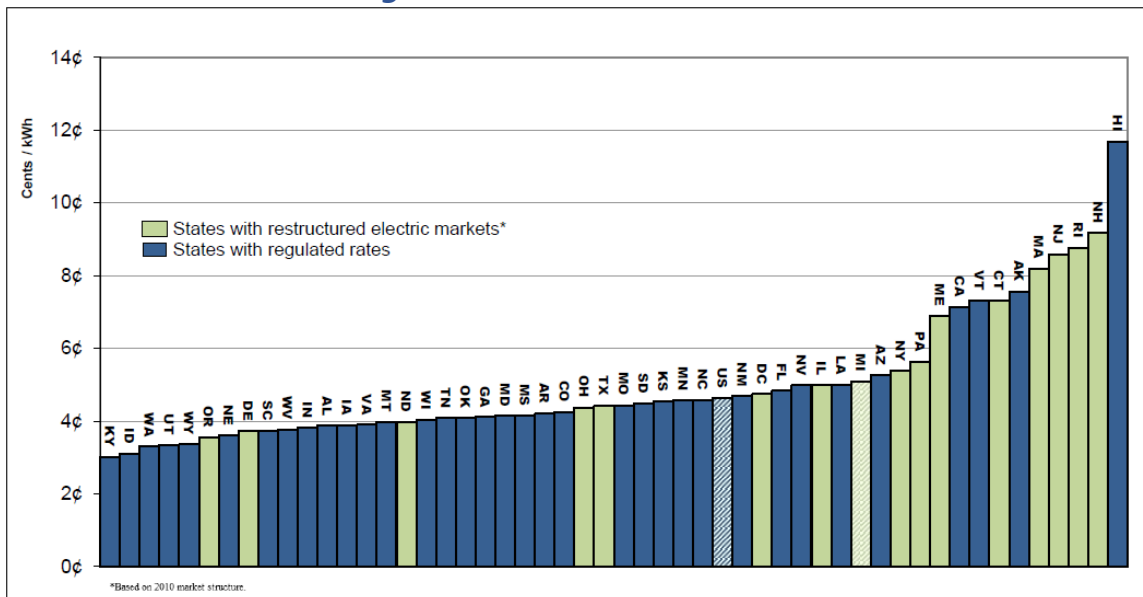
The figures below reflect the 2000 and 2018 average industrial retail rates. In 2018, Michigan's industrial retail rates ranked tenth highest amongst jurisdictions with some type of restructured market at \$0.0731 kWh. Michigan ranked eighth lowest in 2000.

Average Industrial Retail Price 2018*



Source, http://www.eia.doe.gov/cneaf/electricity/page/sales_revenue.xls, Current and Historical Monthly Retail Sales, Revenues, Average Retail Price by State and By Sector (Form EIA-826). 2018*, 2018 data is only through August and will change.

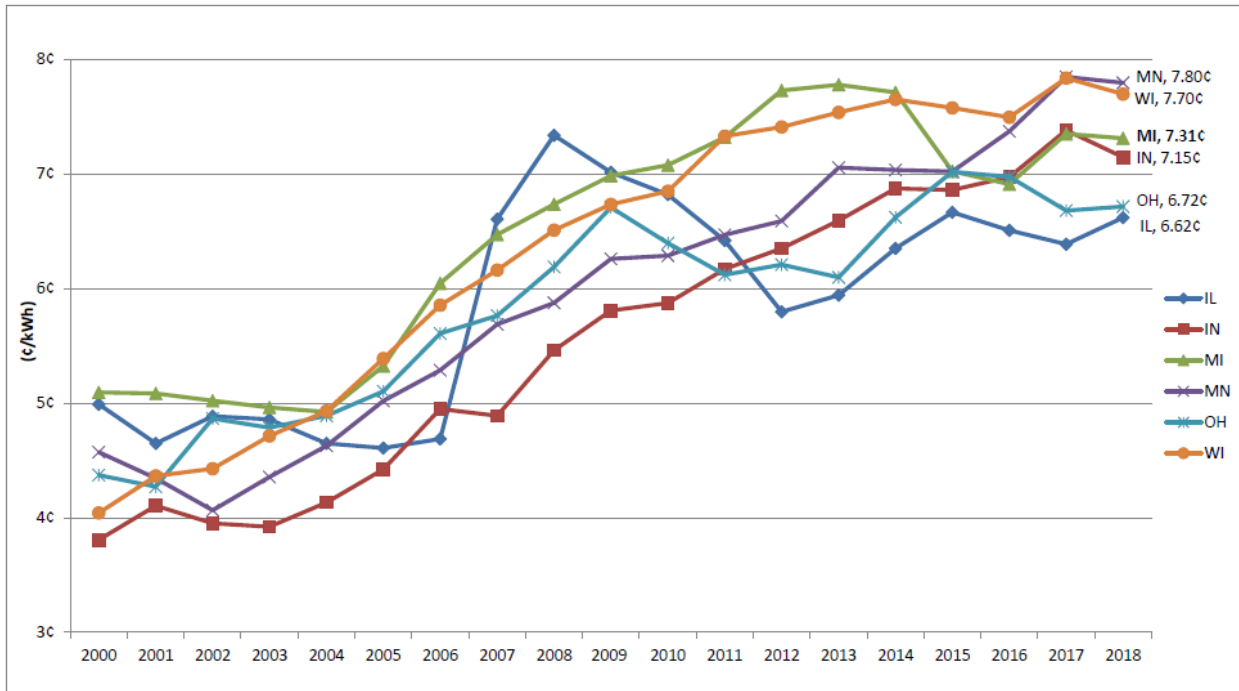
Average Industrial Retail Price in 2000



Source, http://www.eia.doe.gov/cneaf/electricity/page/sales_revenue.xls, Current and Historical Monthly Retail Sales, Revenues, Average Retail Price by State and By Sector (Form EIA-826). *Based on 2010 market structure.

The figure below reflects the average industrial retail rates for the neighboring Midwest states from 2000 through 2018. In 2018, Michigan's average industrial retail rates ranked the third highest among the six Midwest states at \$0.0731/kWh. Michigan ranked the highest in 2000.

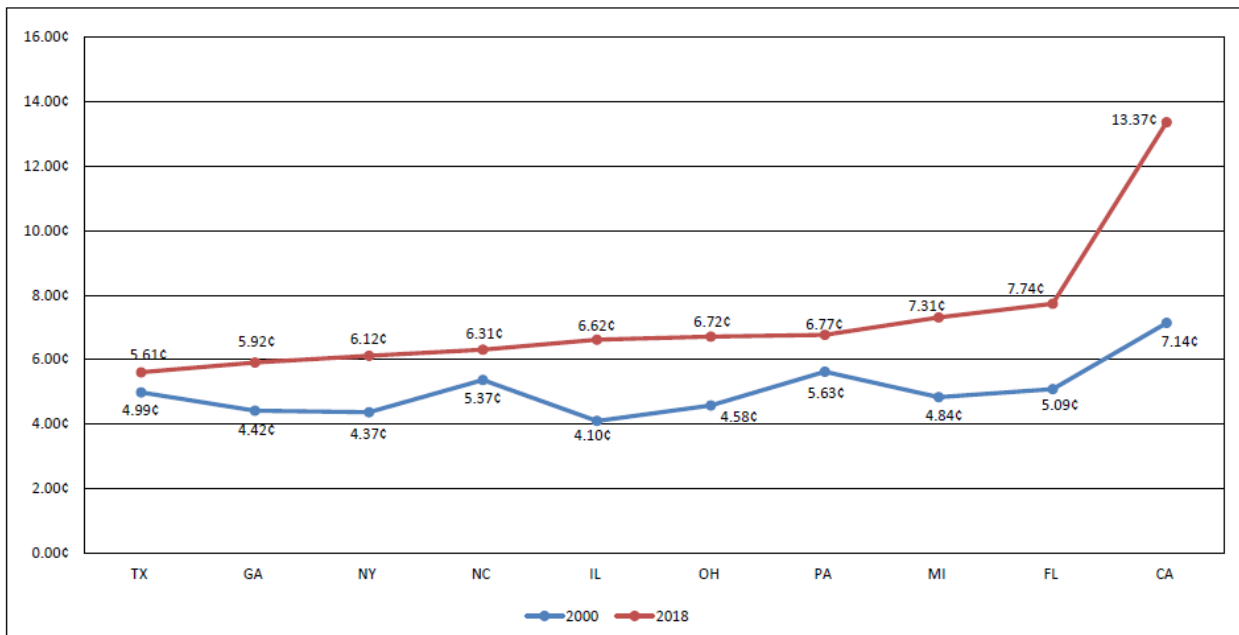
Average Industrial Retail Rates For Midwest 2000-2018



Source, http://www.eia.doe.gov/cneaf/electricity/page/sales_revenue.xls, Current and Historical Monthly Retail Sales, Revenues, and Average Retail Price by State and By Sector (Form EIA-826). 2018*, 2018 data is only through August and will change.

The figure below compares the average industrial retail rates for the 10 largest states by population for 2000 and 2018. Michigan's rates were third highest among these states in 2018 at \$0.0731/kWh. Michigan ranked fourth highest in 2000.

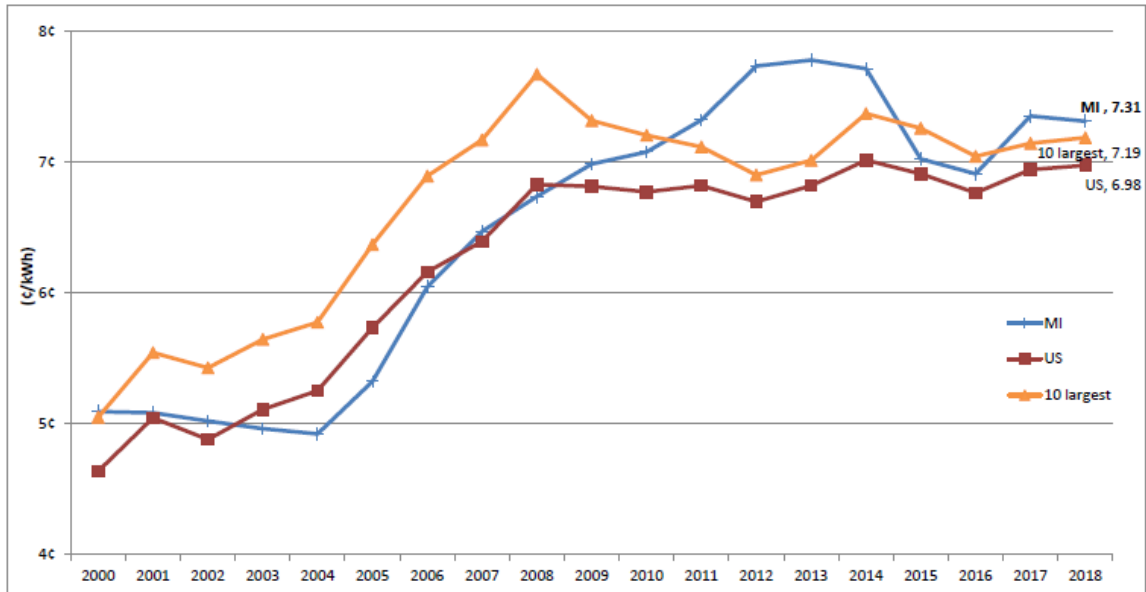
Average Industrial Rates for 10 Largest States – 2000 vs. 2018



Source, http://www.eia.doe.gov/cneaf/electricity/page/sales_revenue.xls, Current and Historical Monthly Retail Sales, Revenues, and Average Retail Price by State and By Sector (Form EIA-826). *2018 data is through August and will change.

The figure below reflects the weighted average industrial retail rates for the 10 largest states, as well as the national average, from 2000 to 2018. Michigan's weighted average industrial retail rate has been above the national average since 2009 and has straddled the 10 largest state average since 2011.

Weighted Average Industrial Retail Rate For 10 Largest States 2000-2018*



Source, http://www.eia.doe.gov/cneaf/electricity/page/sales_revenue.xls, Current and Historical Monthly Retail Sales, Revenues, and Average Retail Price by State and by Sector (from EIA-826). 2018*, the 2018 data is only through August and will change.

Commission Action Related to Electric Choice and Customer Protections

The following orders further supported and implemented the framework for Michigan's electric customer choice programs, the provisions of Act 141 and the amendments of Act 286, Act 295 and Act 341.¹⁸ Throughout 2018, the Commission issued the following orders in relation to Electric Customer Choice:

- Three orders relating to capacity demonstration requirements provided for in Act 341;
- Six orders setting state reliability mechanism capacity rates that may be applicable to ROA load if AES capacity demonstration requirements are not met by AESs serving in Michigan;
- One order rescinding an AES license;
- 24 orders approving renewable energy plans for AESs;
- One order relating to demand response aggregation of AES load;

¹⁸ Commission orders are available on the Commission website at <https://w2.lara.state.mi.us/ADMS/Mpsc/CommissionOrdersSearch>

- One order approving modifications to I&M's electric choice tariff

See Appendix 2 for a complete list and further detail on these orders.

Commission Action on Customer Education

During 2018 the Michigan Public Service Commission (MPSC) Staff, in conjunction with the Michigan Agency for Energy (MAE) Staff, continued disseminating utility-related consumer resource materials as part of its External Affairs Strategic Plan. The plan consisted of significant constituent outreach that adopted new partnerships and continued to promote established relationships with utility stakeholders and target citizen groups. Staff exhibited at 159 events and engaged with an estimated 14,883 residents. At the request of several organizations, Staff presented information to meeting attendees concerning a range of utility topics that included retail choice for natural gas and electricity in Michigan. These activities allowed staff to supply Michigan residential citizens and small business owners with consumer tips and answer questions related to electric, natural gas, telecom and cable issues. In addition, dispute resolution with regulated utilities and alternative energy suppliers was offered. Consumer Tips are posted on the MPSC website¹⁹.

Recommendations for Legislation

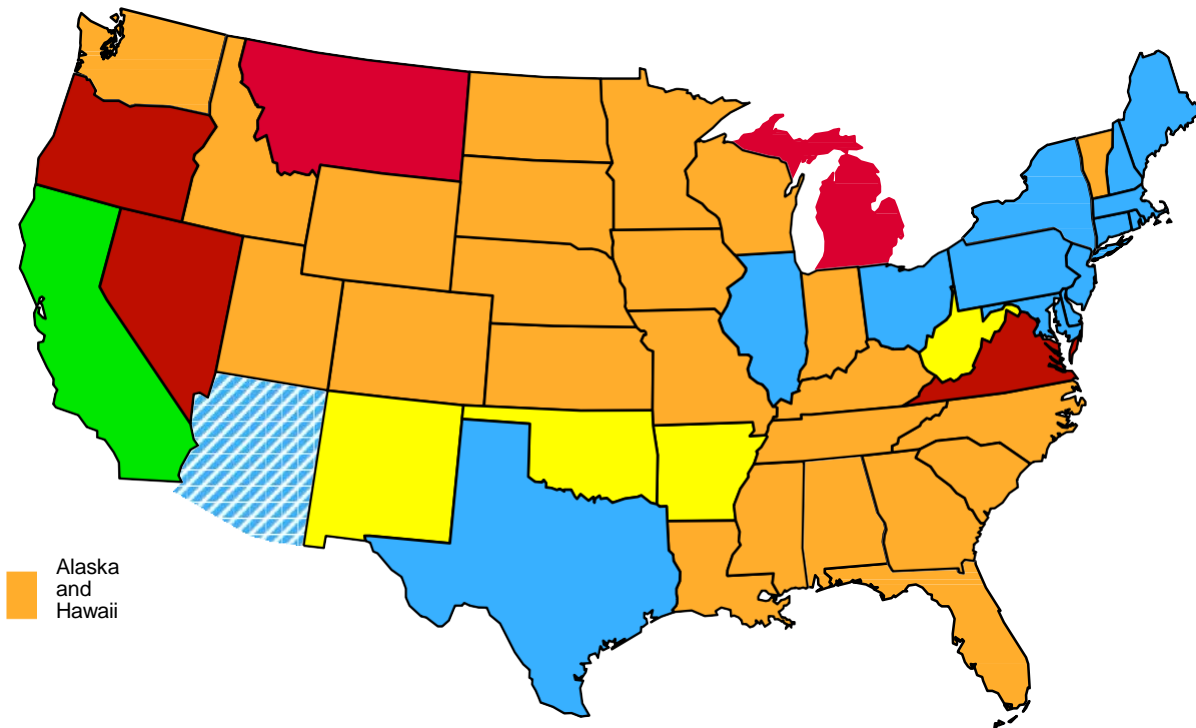
The Commission is continually implementing the provisions outlined in PA 341 and has no further recommendations for legislation at this time. Throughout 2018, the Commission continued to engage with stakeholders regarding the resource adequacy and state reliability mechanism provisions within the new law.²⁰ The Commission will continue to closely monitor the impact of the implementation of the new law on energy providers and customers in Michigan. Although the Commission does not recommend any legislative changes at this time, the Commission stands ready to assist the legislature in its future endeavors.

¹⁹ http://www.michigan.gov/mpsc/0,1607,7-159-16368_42136_42137---,00.html

²⁰ See https://www.michigan.gov/mpsc/0,4639,7-159-80741_80743-411741--,00.html and http://www.michigan.gov/mpsc/0,4639,7-159-80741_80743-406252--,00.html

APPENDIX 1

Figure 1



- Allow retail access (13+DC)
- Limited access (5) -- see summary below;
- Not considering restructuring at this time (26)
- Retail access suspended (CA)
- Restructuring law repealed or delayed (4)
- Retail access with generation price control (AZ)

MI: alternative suppliers limited to maximum of 10% of electric utility's retail sales
MT: Retail access repealed for customers < 5 MW and for all customers that choose utility service
NV: retail access limited to large customers > or = 1 MW, with permission of the PUC
OR: nonresidential consumers of PGE and Pacific Power have option to buy electricity from an alternative provider
VA: Retail access ended for most customers -- except those >5 MW (w/conditions for return)

Source: Ken Rose, August 2018 58th IPU Annual Regulatory Studies Program

Figure 2

AES Customers in Consumers Energy Service Territory, Year End

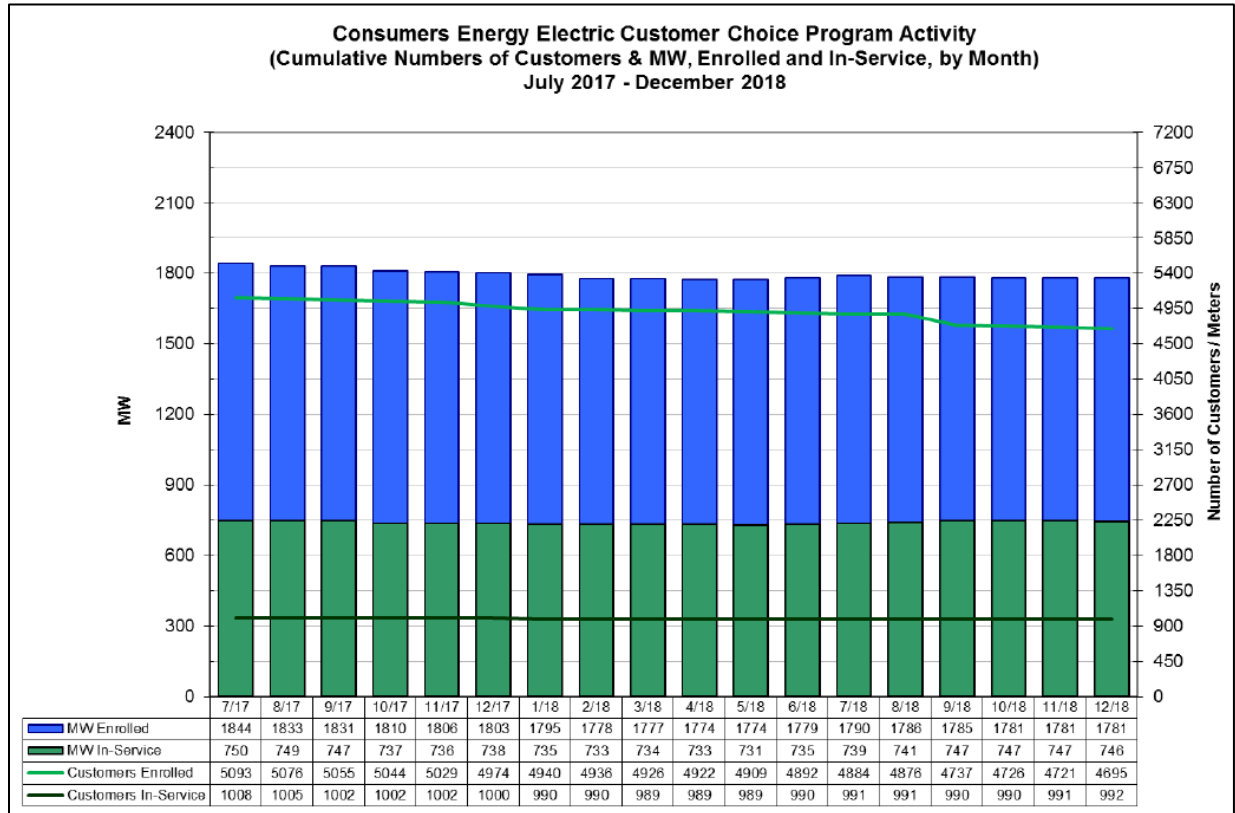
AES Name	Number of Customers						MW Served					
	2013	2014	2015	2016	2017	2018	2013	2014	2015	2016	2017	2018
Constellation NewEnergy Inc.	551	541	535	558	819	833	231	216	200	225	376	372
Direct Energy Business ¹	57	72	87	79	71	43	7	17	52	51	15	7
FirstEnergy Solutions	89	36	27	12	15	22	124	122	98	119	127	149
Constellation Energy Services fka Integrys ²	245	280	277	263	0	0	173	171	172	131	0	0
Calpine Energy Solutions, LLC fka Noble ³	101	95	76	71	71	65	102	91	72	71	70	56
Spartan Renewable Energy	1	1	1	2	2	5	10	10	11	13	14	27
Wolverine Power Marketing	21	25	27	25	22	24	140	144	146	139	136	135
Totals	1,065	1,050	1,030	1,010	1,000	992	787	771	751	749	738	746

Note: ¹On September 1, 2008, Strategic Energy, LLC, changed its name to Direct Energy Business, LLC.

²On November 3, 2014, Integrys Energy Services, Inc., merged with Constellation, a subsidiary of Exelon Corporation. A legal name change from Integrys Energy Services, Inc. to Constellation Energy Services, Inc. became effective on April 1, 2015. Customers enrolled with Constellation Energy Services fka Integrys were transferred to Constellation NewEnergy Inc. during 2017.

³On November 1, 2010, Sempra Energy Solutions, LLC, changed its name to Noble Americas Energy Solutions, LLC. On December 1, 2016, Noble Americas Energy Solutions, LLC changed its name to Calpine Energy Solutions, LLC.

Figure 3



Source: Consumers Energy Company, December 2018.

Notes:

MW Enrolled – Total megawatts actively being served by an AES plus the total megawatts held by the queued customers
 MW In Service – Total megawatts actively being served by an AES

Customers Enrolled – Total number of customers actively being served by an AES plus the total number of queued customers
 Customers In Service – Total customers actively being served by an AES

Figure 4

AES Customers in DTE Electric Company Service Territory, Year End

AES Name	Number of Customers						MW Served					
	2013	2014	2015	2016	2017	2018	2013	2014	2015	2016	2017	2018
CMS ERM MI	4	4	6	12	12	12	53	53	54	35	35	35
Just Energy Solutions fka Commerce ¹	228	205	174	159	130	111	5	5	4	4	3	3
Constellation NewEnergy	1,289	1,357	1,325	1,305	2,014	2,161	284	283	282	280	470	503
Direct Energy Business ²	733	953	1,465	1,587	1,476	1,342	115	160	228	288	399	387
Eligo Energy, MI LLC	0	0	0	11	18	15	0	0	0	1	2	1
FirstEnergy Solution	775	504	283	115	55	20	396	298	221	193	30	8
Constellation Energy Services fka Integrys ³	764	810	792	661	16	0	150	213	217	152	6	0
MidAmerican ⁴	98	37	24	25	40	0	22	8	7	5	5	0
Calpine Energy Solutions, LLC fka Noble ⁵	970	942	915	912	899	905	123	115	111	110	105	116
Wolverine Power Marketing	2	2	2	119	119	115	13	13	13	80	79	79
Totals ⁶	5,491	5,285	4,986	4,906	4,779	4,681	1,191 ⁶	1,168 ⁶	1,137	1,148	1,134	1,132

Note: ¹ On April 5, 2017, Commerce Energy Inc. changed its name to Just Energy Solutions, Inc.

² On September 1, 2008, Strategic Energy, LLC, changed its name to Direct Energy Business, LLC.

³ On November 3, 2014, Integrys Energy Services, Inc., merged with Constellation, a subsidiary of Exelon Corporation. A legal name change from Integrys Energy Services, Inc. to Constellation Energy Services, Inc. became effective on April 1, 2015. Constellation Energy Services, Inc. customers were moved to Constellation NewEnergy in 2018.

⁴ During 2016, MidAmerican Energy Company transferred their customers to MidAmerican Energy Services and voluntarily rescinded its AES license. MidAmerican now refers to MidAmerican Energy Services.

⁵ On November 1, 2010, Sempra Energy Solutions, LLC, changed its name to Noble Americas Energy Solutions, LLC. On December 1, 2016, Noble Americas Energy Solutions, LLC changed its name to Calpine Energy Solutions, LLC.

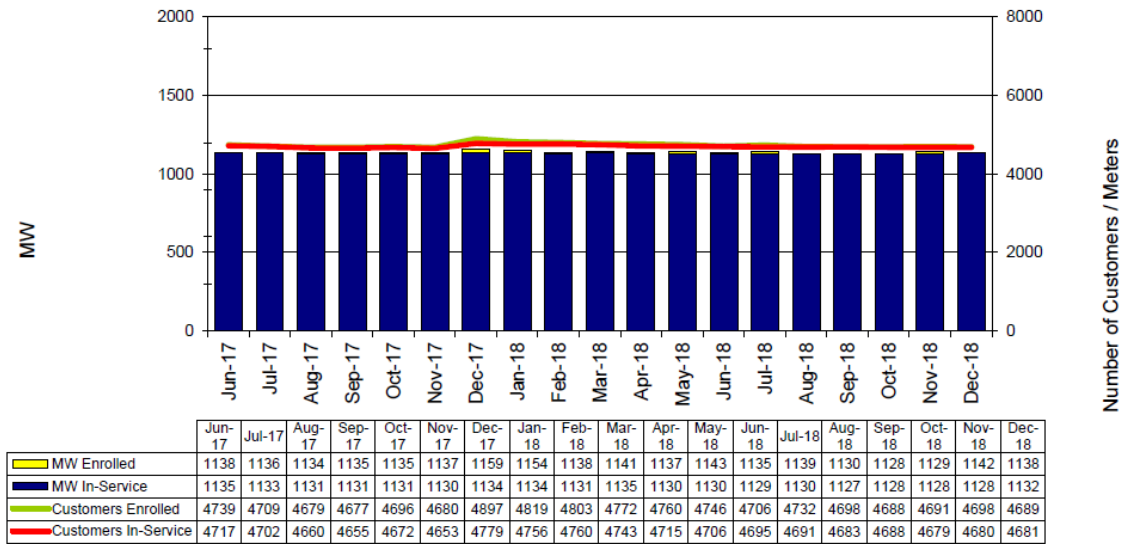
⁶ Total does not add correctly due to rounding.

Figure 5

Electric Choice Customer Participation Jun 2017 to Present



DTE Electric Customer Choice Program Activity, as of 01/07/2019
(Cumulative Numbers of Customers & MW, Enrolled and In-Service, by Month)



Source: DTE Electric Company, December 2018.

Notes:

MW Enrolled – Megawatts that have requested to switch to another AES

MW In Service – Total megawatts actively being served by an AES

Customers Enrolled – Customers who have requested to switch to another AES

Customers In Service – Total customers actively being served by an AES

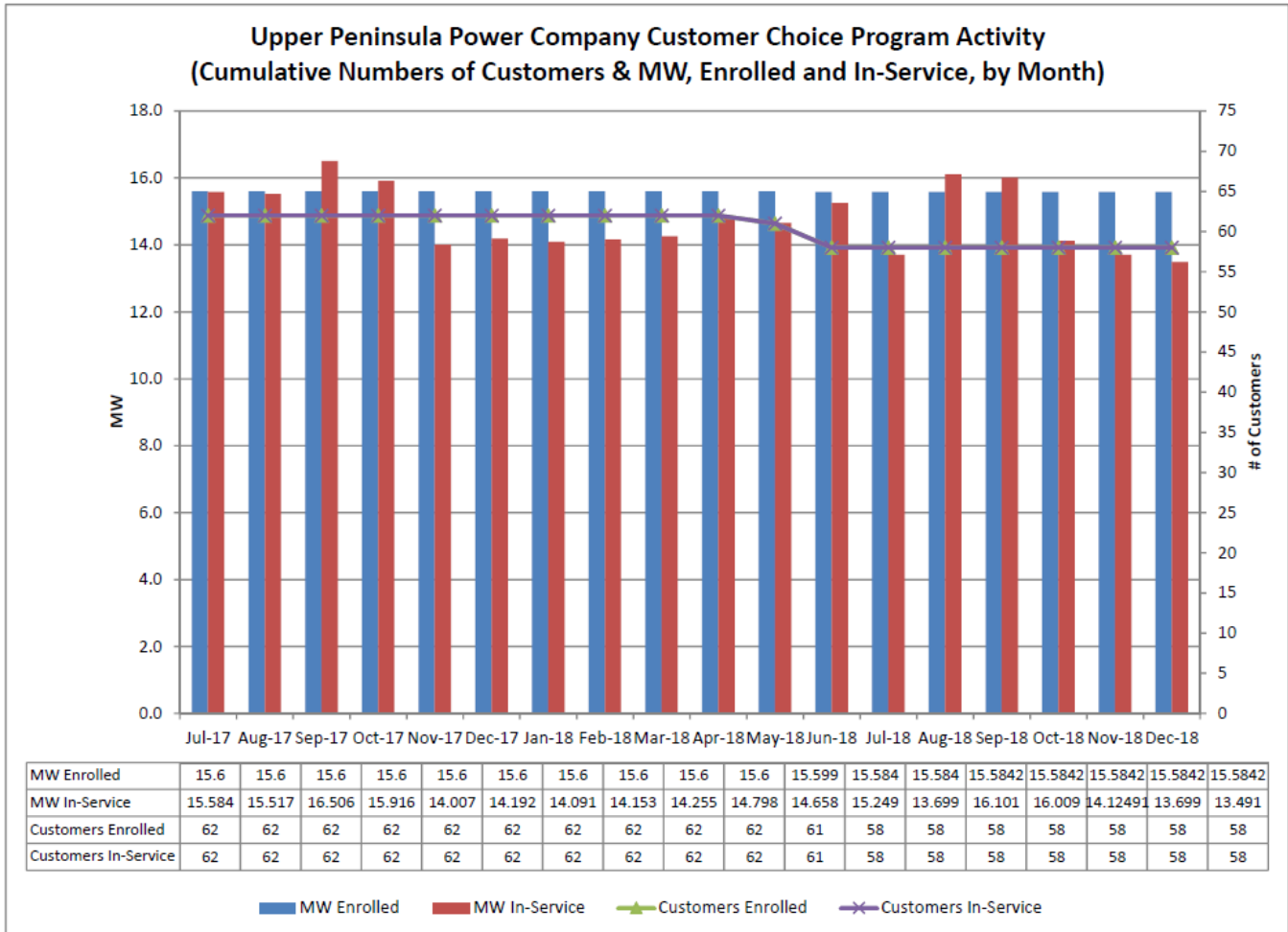
Figure 6

AES Customers in the UPPCo Service Territory, Year End

AES Name	Number of Customers						MW Served					
	2013	2014	2015	2016	2017	2018	2013	2014	2015	2016	2017	2018
Constellation Energy Services fka Integrys ¹	17	30	30	32	31	0	5.88	3.69	4.74	4.75	4.54	0
Constellation NewEnergy	0	0	0	0	0	56	0	0	0	0	0	6.614
UP Power Marketing	21	29	29	29	30	0	3.88	4.88	3.74	3.83	4.17	0
Wolverine Power Marketing	1	1	1	1	1	2	5.62	5.67	5.62	5.65	5.48	6.877
Totals	39	60	60	62	62	58	15.38	14.24	14.10	14.23	14.19	13.491

Note: ¹On November 3, 2014, Integrys Energy Services, Inc., merged with Constellation, a subsidiary of Exelon Corporation. A legal name change from Integrys Energy Services, Inc. to Constellation Energy Services, Inc. became effective on April 1, 2015. Constellation Energy Services, Inc. customers were moved to Constellation NewEnergy in 2018.

Figure 7



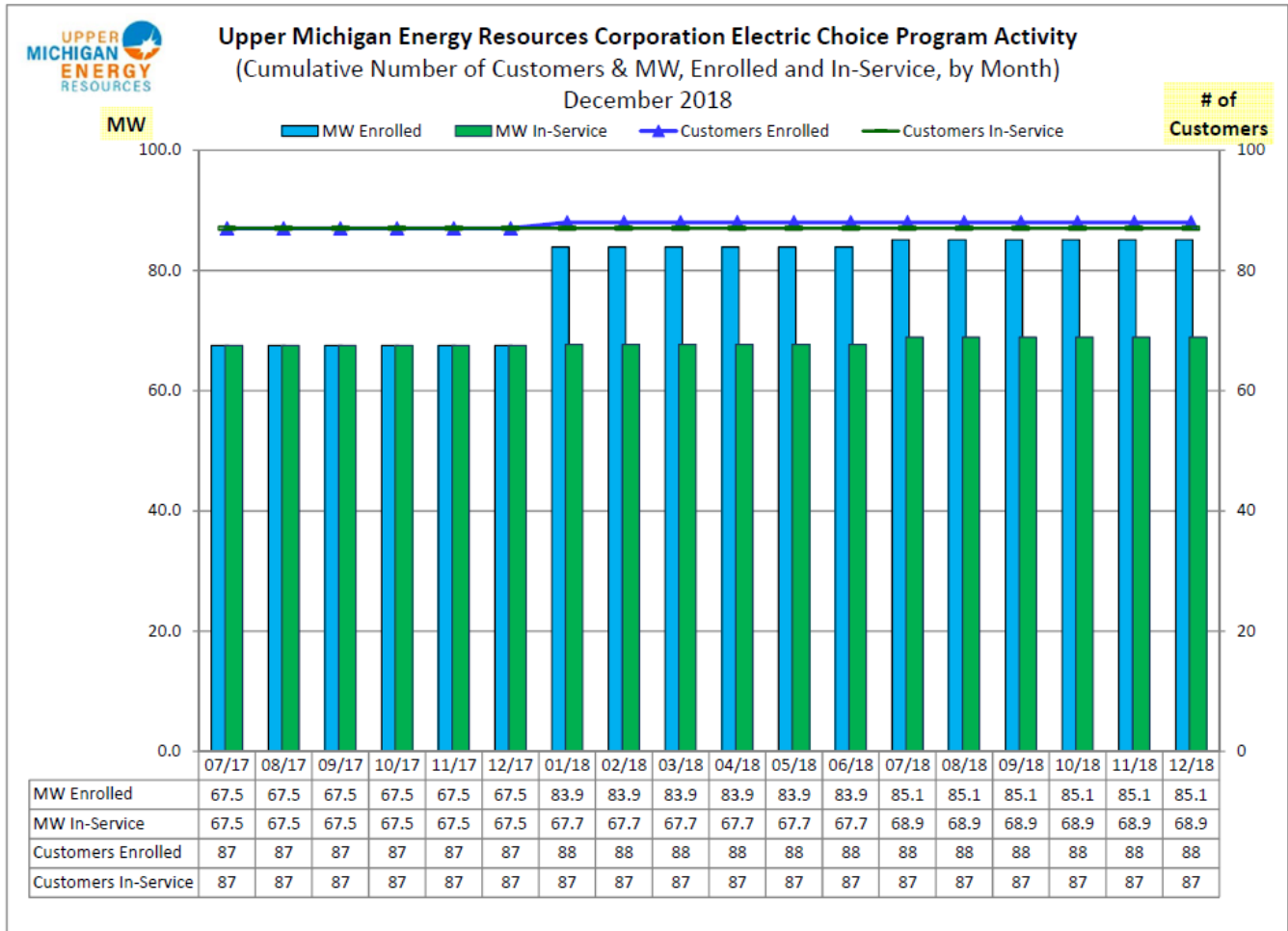
Source: Upper Peninsula Power Company, December 2018.

Figure 8

AES Customers in the UMERC Service Territory, Year End

AES Name	Number of Customers		MW Served	
	2017	2018	2017	2018
Constellation Energy Services fka Integrys ¹	87	0	67.7	0
Constellation NewEnergy, Inc.	0	87	0	68.9
Totals	87	87	67.7	68.9
<p>Note: ¹On November 3, 2014, Integrys Energy Services, Inc., merged with Constellation, a subsidiary of Exelon Corporation. A legal name change from Integrys Energy Services, Inc. to Constellation Energy Services, Inc. became effective on April 1, 2015. Constellation Energy Services, Inc. customers were moved to Constellation NewEnergy in 2018.</p>				

Figure 9



*Source: Upper Michigan Energy Resources Corporations, December 2018.

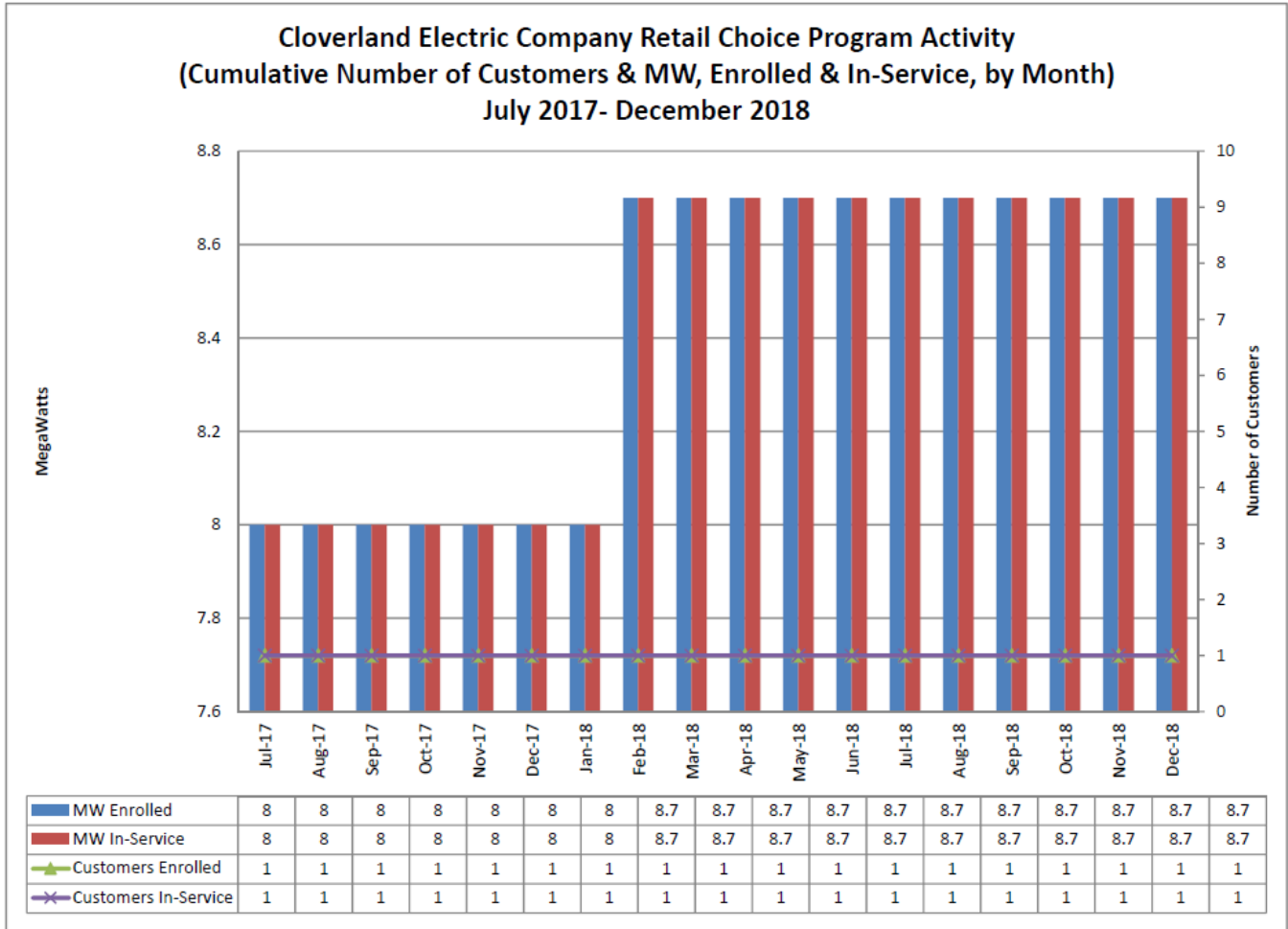
Figure 10

AES Customers in the Cloverland Service Territory, Year End

AES Name	Number of Customers						MW Served					
	2013	2014	2015	2016	2017	2018	2013	2014	2015	2016	2017	2018
Duke Energy ¹	0	1	0	0	0	0	0	9.4	0	0	0	0
Spartan Renewable	0	0	0	0	1	1	0	0	0	0	8	8.7
Totals	0	1	0	0	1	1	0	9.4	0	0	8	8.7

Note: ¹ On May 3, 2016, Duke Energy voluntarily surrendered their AES license

Figure 11



Source: Cloverland Electric Cooperative, December 2018.

APPENDIX 2

Michigan Public Service Commission Orders in 2018 Related to Implementation of Public Acts 141 of 2000, 286 of 2008, and 341 of 2016

- Provisions in 2016 Act 341 Sec. 6w require all electric providers, including AESs to demonstrate to the MPSC that they have enough resources to serve the anticipated needs of their customers four years forward. If an AES cannot or choose not to arrange generating capacity to meet the new requirement, they would be subject to the SRM Charge. The SRM Charge is set by the MPSC and would be paid to the utility. The following are SRM cases that impact AESs:
 - Indiana Michigan Power Company – U-18370, order dated April 12, 2018
 - Upper Peninsula Power Company – U-20131, order dated July 25, 2018
 - Upper Michigan Energy Resources Corporation – U-20130, order dated August 28, 2018
 - Cloverland Electric Cooperative – U-18258, order dated October 24, 2018
 - DTE Electric Company – U-20162 (currently being litigated in DTE’s Electric rate case)
 - Consumers Energy Company – U-20134 (litigated in Consumers Energy’s Electric rate case)
- **Premier Energy Services, LLC – U-13620: Voluntary Relinquishment of AES License 2/22/2018**
The Commission rescinded Premier Energy Services, LLC’s AES license at the request of the company. Additionally, Premier is relieved of any obligation to comply with requirements established by Public Act 295 and in renewable energy plan Case Number U-16648.
- **U-18370 – In the matter of the application of Indiana Michigan Power Company for authority to increase its rates for the sale of electric energy and for approval of depreciation accrual rates and other related matters.** On May 15, 2017, Indiana Michigan Power Company (I&M) filed an application for authority to amend its electric rate schedules and to increase jurisdictional operating revenues. On April 12, 2018, the Commission adopted the proposed Open Access Distribution tariff modifications proposed by Staff.
- **U-18441 – In the matter on the Commission’s own motion regarding the implementation of MCL 460.6w.** On May 17, 2018 the Commission accepted Staff’s Report and Supplemental Report and adopted the recommendations with respect to the 2018-2021 planning year capacity demonstrations. The Commission found that no show cause proceedings were necessary and that no AES customers would be levied an SRM capacity charge for that period.
- **U-20154 - In the matter, on the Commission's own motion, to open a docket for load serving entities in Michigan to file their capacity demonstrations as required by MCL 460.6w.** On May 17, 2018, the Commission opened this docket for all electric providers, including AESs to file their capacity demonstrations.

- **U-18444 - In the matter on the Commission's own motion to open a contested case proceeding for determining the process and requirements for a forward locational requirement under MCL 460.6w.** On October 11, 2017, the Commission opened a contested case proceeding for determining the process and requirement for a forward locational requirement for generation resources used to meet electric capacity obligations under Section 6w of Act 341. On September 13, 2018, the Commission delayed enforcement of the individual forward locational requirement for electric providers since the Michigan Court of Appeals, in July, ruled the MSPC did not have the authority to impose the requirement. The Commission has appealed the decision to the Michigan Supreme Court.

- **U-20348 – In the matter on the Commission’s own motion, to address outstanding issues regarding demand response aggregation for alternative electric supplier load.** The Commission opened this docket directing Staff to work with appropriate stakeholders to establish a process for DR aggregation for customers who are served by an AES. Staff will conduct Stakeholder meetings, examine the status of DR aggregation in Michigan and file a report to this docket during 2019.

- **Renewable Energy Plans**
 - **AEP Energy, Inc. – U-15825: Amended Renewable Energy Plan** 6/28/2018. On 4/4/2018, AEP Energy, Inc. (AEP) filed a letter to the docket indicating that the company continues to serve no retail customers in Michigan.) On 6/28/2018, the Commission ordered that AEP was compliant with the requirements of PA 295 of 2008 and that they are not required to file an annual report with the Commission while it is not serving retail customers.
 - **Calpine Energy Solutions f/k/a Noble Americas Energy Solutions, LLC U-16650: Amended Renewable Energy Plan** 4/18/2018. The MPSC approved Calpine Energy Solutions amended REP submitted on 12/15/2017 as required by Public Act 295 of 2008 and amended by PA 342 of 2016.
 - **CMS ERM Michigan LLC – U-16640: Amended Renewable Energy Plan** 4/18/2018. The MPSC approved CMS ERM Michigan’s amended REP submitted on 12/14/2017 as required by Public Act 295 of 2008, and amended by PA 342 of 2016.
 - **Constellation Energy Services – U-16646: Amended Renewable Energy Plan** 4/18/2018. The MPSC approved Constellation Energy Services f/k/a Integrys Energy Services amended REP submitted on 12/15/2017 as required by Public Act 295 of 2008, and amended by PA 342 of 2016.
 - **Constellation NewEnergy, Inc. – U-16642: Amended Renewable Energy Plan** 4/18/2018. The MPSC approved Constellation NewEnergy’s amended REP submitted on 12/18/2017 as required by Public Act 295 of 2008, and amended by PA 342 of 2016.
 - **Dillon Power, LLC – U-17769: Amended Renewable Energy Plan** 6/28/2018. On 3/16/2018, Dillon Power filed a letter to the docket indicating that the company continues to serve no retail customers in Michigan. On 6/28/2018, the Commission ordered that Dillon Power was compliant with the requirements of PA 295 of 2008 and that they are not required to file an annual report with the Commission while it is not serving retail customers.

- **Direct Energy Business, LLC – U-16643: Amended Renewable Energy Plan** 4/18/2018. The MPSC approved Direct Energy Business, LLC’s amended REP submitted on 12/15/2017 as required by Public Act 295 of 2008, and amended by PA 342 of 2016.
- **Direct Energy Services, LLC – U-15830: Amended Renewable Energy Plan** 6/28/2018. On 12/15/2017, Direct Energy Services, LLC (Direct Energy) filed a letter to the docket indicating that the company continues to serve no retail customers in Michigan. On 6/28/2018, the Commission ordered that Direct Energy was compliant with the requirements of PA 295 of 2008 and that they are not required to file an annual report with the Commission while it is not serving retail customers.
- **EDF Energy Services, LLC – U-18037: Amended Renewable Energy Plan** 6/28/2018. On 12/15/2017, EDF Energy Services, LLC filed a letter to the docket indicating that the company continues to serve no retail customers in Michigan. On 6/28/2018, the Commission ordered that EDF Energy Services was compliant with the requirements of PA 295 of 2008 and that they are not required to file an annual report with the Commission while it is not serving retail customers.
- **Eligo Energy MI, LLC – U-17885: Amended Renewable Energy Plan** 6/28/2018. The MPSC approved Eligo Energy, LLC’s amended REP submitted on 3/15/2018 as required by Public Act 295 of 2008, and amended by PA 342 of 2016.
- **Energy Services Providers, Inc. d/b/a Michigan Gas & Electric – U-17010: Amended Renewable Energy Plan** 6/28/2018. On 6/13/2018 Energy Services Providers, Inc. d/b/a Michigan Gas & Electric filed a letter to the docket indicating that the company continues to serve no retail customers in Michigan. On 6/28/2018, the Commission ordered that Michigan Gas & Electric was compliant with the requirements of PA 295 of 2008 and that they are not required to file an annual report with the Commission while it is not serving retail customers.
- **FirstEnergy Solutions Corp. – U-16644: Amended Renewable Energy Plan** 4/18/2018. The MPSC approved First Energy Solutions amended REP submitted on 12/13/2017 as required by Public Act 295 of 2008, and amended by PA 342 of 2016.
- **Interstate Gas Supply, Inc d/b/a IGS Energy – U-17338: Amended Renewable Energy Plan** 6/28/2018. On 2/15/2018, Interstate Gas Supply filed a letter to the docket indicating that the company continues to serve no retail customers in Michigan. On 6/28/2018, the Commission ordered that IGS Energy was compliant with the requirements of PA 295 of 2008 and that they are not required to file an annual report with the Commission while it is not serving retail customers.
- **Just Energy, Inc. – U-16641: Amended Renewable Energy Plan** 4/18/2018. The MPSC approved Just Energy’s amended REP submitted on 12/21/2017 as required by Public Act 295 of 2008, and amended by PA 342 of 2016.
- **Liberty Power Delaware, LLC – U-15834: Amended Renewable Energy Plan** 6/28/2018. On 6/13/2018, Liberty Power Delaware, LLC filed a letter to the docket indicating that the company continues to serve no retail customers in Michigan. On 6/28/2018, the Commission ordered that Liberty Power Delaware was compliant with the requirements of PA 295 of 2008 and that they are not required to file an annual report with the Commission while it is not serving retail customers.
- **Liberty Power Holdings, LLC – U-15835: Amended Renewable Energy Plan** 6/28/2018. On 6/13/2018, Liberty Power Holdings, LLC filed a letter to the docket indicating that the company continues to serve no retail customers in Michigan. On 6/28/2018, the Commission ordered that

- Liberty Power Holdings was compliant with the requirements of PA 295 of 2008 and that they are not required to file an annual report with the Commission while it is not serving retail customers.
- **MidAmerican Energy Services, LLC – U-17934: Amended Renewable Energy Plan** 4/18/2018. The MPSC approved MidAmerican Energy Services amended REP submitted on 12/12/2017 as required by Public Act 295 of 2008 and amended by PA 342 of 2016.
 - **Nordic Energy Services, LLC – U-18066: Amended Renewable Energy Plan** 6/28/2018. On 3/20/2018, Nordic Energy Services filed a letter to the docket indicating that the company continues to serve no retail customers in Michigan. On 6/28/2018, the Commission ordered that Nordic Energy Services was compliant with the requirements of PA 295 of 2008 and that they are not required to file an annual report with the Commission while it is not serving retail customers.
 - **Plymouth Rock Energy, LLC – U-17549: Amended Renewable Energy Plan** 6/28/2018. On 3/15/2018, Plymouth Rock Energy filed a letter to the docket indicating that the company continues to serve no retail customers in Michigan. On 6/28/2018, the Commission ordered that Plymouth Rock Energy was compliant with the requirements of PA 295 of 2008 and that they are not required to file an annual report with the Commission while it is not serving retail customers.
 - **PowerOne Corporation – U-15840: Amended Renewable Energy Plan** 6/28/2018. On 6/14/2018, PowerOne Corporation (PowerOne) filed a letter to the docket indicating that the company continues to serve no retail customers in Michigan. On 6/28/2018, the Commission ordered that PowerOne Corporation was compliant with the requirements of PA 295 of 2008 and that they are not required to file an annual report with the Commission while it is not serving retail customers.
 - **Spartan Renewable Energy, Inc. – U-16651: Amended Renewable Energy Plan** 4/18/2018. The MPSC approved Spartan Renewable Energy's amended REP submitted on 12/14/2017 as required by Public Act 295 of 2008 and amended by PA 342 of 2016.
 - **Texas Retail Energy, LLC – U-17168: Amended Renewable Energy Plan** 6/28/2018. On 3/16/2018, Texas Retail Energy, LLC (Texas Retail) filed a letter to the docket indicating that the company continues to serve no retail customers in Michigan. On 6/28/2018, the Commission ordered that Texas Retail Energy was compliant with the requirements of PA 295 of 2008 and that they are not required to file an annual report with the Commission while it is not serving retail customers.
 - **U.P. Power Marketing, LLC – U-16652: Amended Renewable Energy Plan** 4/18/2018. The MPSC approved U.P. Power Marketing, LLC's amended REP submitted on 12/26/2017 as required by Public Act 295 of 2008 and amended by PA 342 of 2016.
 - **Wolverine Power Marketing Cooperative - U-16653: Amended Renewable Energy Plan** 4/18/2018. The MPSC approved Wolverine Power Marketing Cooperative's amended REP submitted on 12/14/2017 as required by Public Act 295 of 2008 and amended by PA 342 of 2016.

APPENDIX 3

Michigan Licensed Alternative Electric Suppliers

Company Name, Address, Contact Information	Case Number	Authorization Date
AEP Energy, Inc. 2723 South State Street, Suite 150, Ann Arbor, MI 48104 Phone: 866-258-3782 Fax: 734-794-4701 Email: care@AEPenergy.com URL: www.AEPenergy.com	U-14764	2/9/2006
Calpine Energy Solutions f/k/a Noble Americas Energy Solutions, LLC 2000 Town Center, Suite 1900, Southfield, MI 48075 Phone: 877-273-6772 Fax: 619-684-8355 Email: customerservice@CalpineSolutions.com URL: www.CalpineSolutions.com	U-13361	4/16/2002
CMS ERM Michigan LLC One Energy Plaza, Suite 1060, Jackson, MI 49201-2277 Phone: 517-788-0493 Fax: 517-787-4606	U-12567	8/17/2000
Constellation Energy Services, Inc. f/k/a Integrys Energy Services, Inc. 1010 W. Washington St., Suite 2, Marquette, MI 49855 Phone: 800-544-9551 Fax: 888-672-7139 Email: support@superiorcontact.net URL: www.constellation.com	U-13245	1/18/2002
Constellation NewEnergy, Inc. 2211 Old Earhart Road, Suite 175, Ann Arbor, MI 48105 Phone: 877-547-4355 Email: customercare@constellation.com URL: www.constellation.com	U-13660	12/20/2002
Dillon Power, LLC 23409 Jefferson Ave., Suite 110, St. Clair Shores, MI 48080 Phone: 866-919-2679 Email: info@dillonpower.com URL: www.dillonpower.com	U-17723	1/13/2015
Direct Energy Business, LLC 110 W Michigan Ave., Suite 500, Lansing, MI 48933 Phone: 866-348-4193 Email: DEBSales@directenergy.com URL: www.business.directenergy.com	U-13609	11/7/2002
Direct Energy Services, LLC 110 W Michigan Ave., Suite 500, Lansing, MI 48933 Phone: 866-326-8559 Email: csdirectenergy@directenergy.com URL: www.directenergy.com	U-14724	12/20/2005
EDF Energy Services, LLC 5627 Settlement Court, Parma, MI 49269 Phone: 877-432-4530 Fax: 281-653-1436 Email: Grp_Hou_SupportTX@edfenergyservices.com URL: www.edfenergyservices.com	U-17937	2/23/2016
Eligo Energy MI, LLC 2000 Town Center, Suite 1900, Southfield, MI, 48075 Phone: 888-744-8125 Email: customerservice@eligoenergy.com URL: www.eligoenergy.com	U-17697	6/15/2015
Energy Services Providers, Inc. d/b/a Michigan Gas & Electric 1030 State Rd., Suite 10H, Harbor Springs, MI 49740 Phone: 866-705-3610 Fax: 888-829-5797 Email: CustomerRelations@MIGandE.com URL: www.MIGandE.com	U-16912	4/6/2012
FirstEnergy Solutions 30600 Telegraph Rd. #2345, Bingham Farms, MI 48025 Phone: 888-254-6359 Fax: 888-820-1416 Email: firstchoice@fes.com URL: www.fes.com	U-13244	1/08/2002

Company Name, Address, Contact Information	Case Number	Authorization Date
Interstate Gas Supply, Inc. d/b/a IGS Energy 306 East Main Street, Suite 230, Niles, MI 49120 Phone: 888-993-0997 Email: choice@igsenergy.com URL: www.igsenergy.com	U-17243	6/28/2013
Just Energy Solutions, Inc. f/k/a Commerce Energy Inc. 30300 Telegraph Rd. Suite 350, Bingham Farms, MI 48025 Phone: 866-587-8674 Fax: 888-548-7690 Email: cswest@justenergy.com URL: www.justenergy.com	U-13203	11/20/2001
Liberty Power Delaware, LLC. <i>Company has received a license. A Michigan office must be established before the company can begin marketing</i>	U-15140	4/24/2007
Liberty Power Holdings, LLC. <i>Company has received a license. A Michigan office must be established before the company can begin marketing</i>	U-15139	4/24/2007
MidAmerican Energy Services, LLC 39555 Orchard Hill Place, Suite 600, Novi, MI 48375 Phone: 800-432-8574 Fax: 563-333-8563 Email: support@midamericanenergyservices.com URL: www.midamericanenergyservices.com	U-17888	9/10/2015
Nordic Energy Services, LLC 2723 South State Street, Suite 150, Ann Arbor, MI 48104 Phone: 877-808-1022 Fax: 888-370-2027 Email: customerservice@nordicenergy-us.com URL: www.nordicenergy-us.com	U-17968	4/14/2016
Plymouth Rock Energy, LLC 25900 Greenfield Road, Suite 245, Oak Park, MI 48237 Phone: 855-327-6937 Fax: 516-295-1417 Email: customercare@plymouthenergy.com URL: www.plymouthenergy.com	U-17492	1/23/2014
PowerOne Corporation 6840 N. Haggerty Road, Canton, MI 48187 Phone: 734-354-2000 Fax: 734-354-4225 Email: Rami.Fawaz@poweronecorp.com URL: www.poweronecorp.com	U-13280	2/1/2002
Spartan Renewable Energy, LLC 10125 W. Watergate Rd., PO Box 189, Cadillac, MI 49601 Phone: 877-288-WIND Fax: 231-775-0172 Email: cgeiger@spartanrenewable.com URL: www.spartanrenewable.com	U-15309	9/18/2007
Texas Retail Energy, LLC 208 N Capitol Ave., 3 rd Floor, Lansing, MI 48933 Phone: 866-532-0761 Fax: 479-204-0936 Email: chris.hendrix@texasretailenergy.com	U-17076	12/6/2012
U.P. Power Marketing LLC 29639 Willow Rd., White Pine, MI 49971 Phone: 906-885-7100 Fax: 906-885-7400 Email: zach.halkola@traxys.com URL: www.traxys.com	U-14594	10/25/2007
Wolverine Power Marketing Cooperative, Inc. 10125 W. Watergate Road, P. O. Box 100, Cadillac, MI 49601 Phone: 877-907-WPMC Fax: 231-775-0172 Email: sfrederick@wpmc.coop URL: www.wpmc.coop	U-12723	11/20/2000

*This list is current as of December 2018. An up-to-date AES directory is kept on the [MPSC](#) Website.