

Wagner-Peyser Employment Service Program



WORKFORCE DEVELOPMENT

The Wagner-Peyser Employment Service (ES) program was created to assist job seekers in securing employment and to assist employers in finding qualified workers.

What services does the ES program provide?

The ES program consists of a variety of employment-related labor exchange services including, but not limited to:

- job search assistance
- job placement assistance
- re-employment services
- work registration for unemployment insurance claimants
- recruitment services to employers

Services are provided through three methods: self-service, facilitated service, and staff-assisted services.

Specialized services are also made available to veterans, migrant and seasonal farmworkers, and individuals with disabilities.

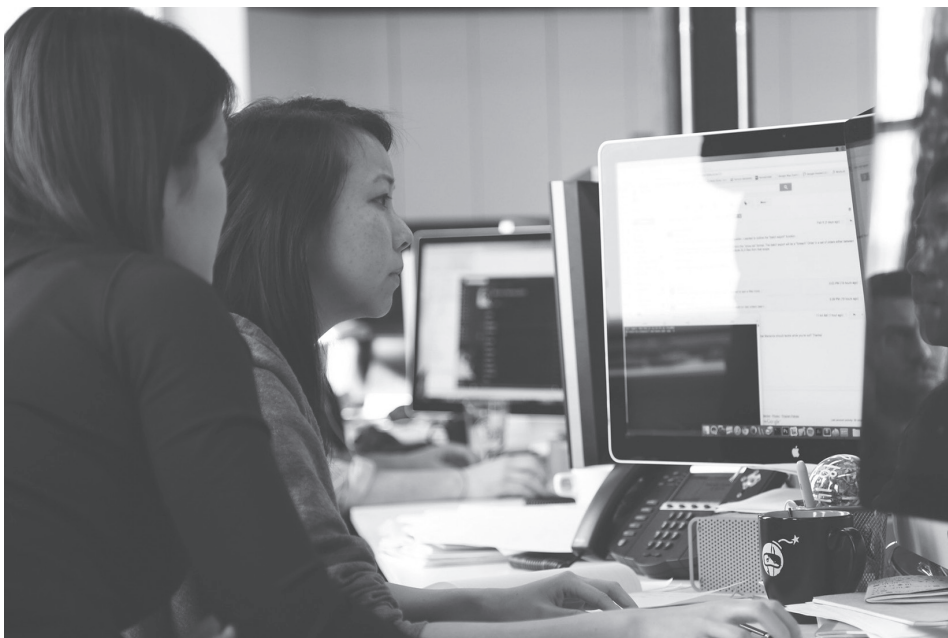
Who is eligible to participate?

There are no specific eligibility requirements for this program. Employment services are provided at no cost to the universal population.

How is this program administered and funded?

The federal Wagner-Peyser Act of 1933 provided for the establishment of a nationwide labor exchange system known as the ES. The Act was amended by the Workforce Innovation and Opportunity Act of 2014.

The State of Michigan distributes federal Wagner-Peyser funding to the 16 Michigan Works! Agencies for administration of the Employment Service program. Funding is distributed July 1st of each year. The state provides oversight and guidance for the operation of the program.



Where can you learn more about the Wagner-Peyser Employment Service program?

For more information, please contact Michigan Works! at 1-800-285-WORKS (9675), or find your local MWA at MichiganWorks.org.