

Michigan Tagging Sites and Tag Resellers for 840 RFID Tags



Approved tagging sites (marked with a • in the listing below) are livestock auction markets where untagged cattle can be moved to have 840 RFID tags applied on-site prior to sale, at the owner's expense. In addition, 840 RFID tags may be purchased to take back to a farm premises for application in bison, cattle, deer, elk, or pigs.

NOTE: *Untagged cattle moved to an approved tagging site without a national PIN cannot be tagged or sold and must return home.*

Tag resellers are retail facilities where 840 RFID tags may be purchased and taken back to the farm premises for application in bison, cattle, deer, elk, or pigs.

Alcona County

[Chippewa Farm Supply](#)

6701 US-23
Spruce, MI 48762
989-471-5523

Allegan County

[Wayland Hopkins Livestock Auction](#) •

3634 10th St.
Wayland, MI 49348
269-792-2296

Antrim County

[Ellsworth Farmers Exchange](#)

11900 Byers Rd.
Atwood, MI 49729
231-599-2592

[Ellsworth Farmers Exchange](#)

6509 Center St.
Ellsworth, MI 49729
231-588-2300

[Ellsworth Farmers Exchange](#)

108 S. Maple St.
Mancelona, MI 49659
231-587-8411

Calhoun County

[Farmers Livestock Marketing Services](#) •

833 E. Emmett St.
Battle Creek, MI 49014
269-962-7591

Cheboygan County

[Blaskowski Feed and Seed](#)

10077 N. Straits Hwy.
Cheboygan, MI 49721
231-627-9080

Clare County

[Clare County Livestock Auction](#) •

11228 S. Grant Ave.
Clare, MI 48617
989-386-9256

Emmet County

[Ellsworth Farmers Exchange](#)

7488 M-68
Alanson, MI 49706
231-548-3200

Gratiot County

[United Producers, Inc.](#) •

7810 N. Croswell Rd.
St. Louis, MI 48880
989-681-2191

Hillsdale County

[Hillsdale Auction](#) •

115 S. Broad St.
Hillsdale, MI 49242
517-437-2424

Ingham County

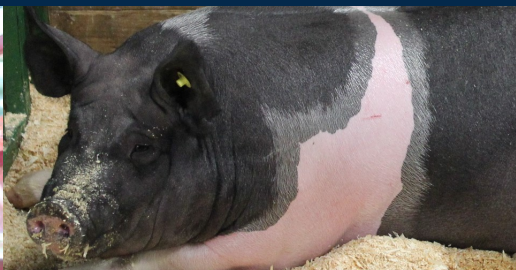
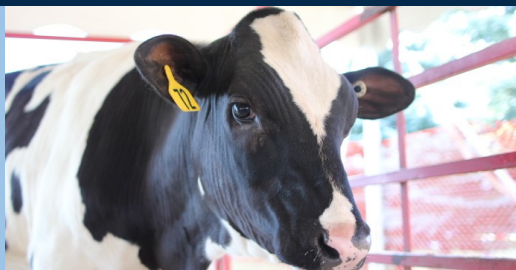
[CentralStar Cooperative, Inc.](#)

4200 Forest Rd.
Lansing, MI 48910
800-631-3510 ext. 1629

Ionia County

[Lake Odessa Livestock Auction](#) •

3675 W. Tupper Lake Rd.
Lake Odessa, MI 48849
616-374-8213



Isabella County

[Rosebush Sale Barn](#) •
4389 E. Denver Rd.
Rosebush, MI 48878
989-433-5348

Jackson County

[Napoleon Livestock Commission Company](#) •
6810 W. Brooklyn Rd.
Napoleon, MI 49261
517-536-4201

Menominee County

[Stephenson Marketing Cooperative](#)
W505 South Dr.
Stephenson, MI 49887
906-753-2207

Montmorency County

[Hardies Seed and Ag Supply](#)
21195 Co Rd. 451
Hillman, MI 49746
989-742-7715

Muskegon County

[Ravenna Auction, LLC](#) •
3265 S. Slocum Rd.
Ravenna, MI 49451
231-853-5738

Otsego County

[Northern Michigan Livestock](#) •
1848 N. Townline Rd.
Gaylord, MI 49735
989-732-5732

Sanilac County

[O'Connor Cattle Company, Inc.](#) •
5678 Black River Rd.
Crowell, MI 48422
810-679-3897

Marlette Livestock Auction •

6381 Euclid St.
Marlette, MI 48453
989-635-2183

Tuscola County

[United Producers, Inc.](#) •
6425 Cass City Rd.
Cass City, MI 48726
989-872-2138

Washtenaw County

[United Producers, Inc.](#) •
9534 Chelsea-Manchester Rd.
Manchester, MI 48158
734-428-8352



7-21

To Obtain 840 RFID Tags

- Provide the **national premises identification number (PIN)** of the farm premises where the livestock are/were housed.
 - Get the **national PIN** for your Michigan farm by calling MDARD at 888-565-8626. To get the national PIN for a farm outside of Michigan, contact the animal health officials in that state.

Example of 840 RFID Tag:



NOTE: Tags cannot be shared with or transferred to another premises.

If you have questions, please email MDA-ADT@michigan.gov or call 517-284-5791.