

Monday Bulletin on Services to Youth

To Coordinate... To Enhance... To Serve... Through Communication...

Meet the Editor



Welcome to the February edition of Monday Bulletin. Julie Eckhardt continues on contract as our producer, layout designer and writer. Melissa Emmer maintains our electronic mailing list and distributes the electronic newsletter to you. Lynn Boza, pictured, is the editor.

Lynn Boza is the statewide rehabilitation consultant assigned to Transition. She has background as a counselor handling Transition cases, a supervisor over counselors with Transition cases and a member of Michigan's Transition Services Project team. Lynn currently represents MRS on the Advisory Council for Mental Illness, the Developmental Disabilities Institute Advisory Committee, and the Special Education Advisory Council. Lynn is also president of the National Rehabilitation Counselors and Educators Association.

You are invited to send your best practice stories, student success stories, and "I learned a lesson" experiences for publication in the Monday Bulletin. Please e-mail submissions to Lynn Boza, the editor, at Bozal@michigan.gov.

Tools & Resources:

Accommodating People with Learning Disabilities

This issue of Monday Bulletin is sent to you along with tools to assist in accommodating people with learning disabilities: *Requesting GED Accommodations* and the *Resources for People with Learning Disabilities*. Each of these tools has been distributed to Michigan Rehabilitation Services counselors and partners in the past, and are sent again as a reminder. Please read the articles regarding these tools, so that you will be prepared to use them in the most effective manner to benefit the people you serve.

New Report from the National Longitudinal Transition Study

Students with Learning Disabilities: General Ed Participation & Academic Performance

The National Center for Special Education at the Institute for Education Sciences (IES) released a brief report from the National Longitudinal Transition Study-2 entitled, *General Education Participation and Academic Performance of Students With Learning Disabilities*. This report focuses on youth, ages 14-18, classified as having learning disabilities who were receiving special education services during the 2000-01 school year. Some of the major findings include the following:

1. Most secondary students with learning disabilities (94%) take at least one class in a general education setting in a given semester, with 80% taking one or more academic courses in a general education setting.
2. Overall, about one-third (35%) of secondary students with learning disabilities receive the standard general education curriculum used for other students in their academic classes. However, more than half of students with disabilities (52%) have teachers who report making "some modifications" to the general education curriculum.
3. Teachers report that 94% of students with learning disabilities receive some type of accommodation or support to enhance their school performance.
4. Youth with learning disabilities experience the greatest difficulty with passage comprehension.

To read or download the fact sheet see:

www.nlts2.org/fact_sheets/2006_07.html

GED Testing: Obtaining Accommodations

- By Lynn Boza

The GED Testing Service has established specific criteria and processes for requesting accommodations. Rehabilitation counselors and other professionals can play an important role in assisting individuals with the application and documentation process. To this end, we have prepared the *Guide to Requesting GED Accommodations*.



Under the Americans with Disabilities Act, tests must be administered in facilities that are accessible to individuals with disabilities or alternative accessible arrangements must be made. In addition, entities that administer such tests are required to make reasonable modifications to the test and to provide reasonable auxiliary aids, such as testing accommodations, for persons with

documented impairments to ensure the examination results accurately reflect the individual's aptitude or achievement level. A testing entity need not provide an auxiliary aid or other testing accommodation that fundamentally alters the examination or results in an undue burden to the testing entity. In other words, an individual with a qualifying disability is entitled to a reasonable and effective accommodation, but not necessarily the accommodation of his or her choice.

The *Guide to Requesting GED Accommodations* is intended to walk you through the process established by the GED Testing Services. Critical background information and eligibility criteria are listed in an easy to use fashion. If used on an Internet connected computer, click-able links lead to GED forms or other topics within the document. The document has been reviewed for accuracy by officials experienced in the GED accommodation request process.

The *Guide to Requesting GED Accommodations* was e-mailed along with this edition of Monday Bulletin. It is also available on the Michigan Rehabilitation Services E-Learn system. Simply type GED into the search field. If you do not have access to E-Learn, send a note to Melissa Emmer EmmerM@michigan.gov and a copy will be forwarded to you.

Resources for People with Learning Disabilities

Resources for People with Learning Disabilities provides a comprehensive, up-to-date listing of state and national resources. This document is distributed as an interactive PDF. It will be most functional if saved to the computer desktop (or other directory) and used with an Internet connection. By clicking on the red addresses, the user will jump directly to additional information on the web.

This document has been reviewed and revised in 2007. Please replace previous copies with the one sent with this edition of Monday Bulletin.

Learning Challenges Assessment Tool for Adult Literacy Learners

This Canadian resource takes a comprehensive and useful approach to learning disabilities for literacy practitioners. It includes a very detailed learner assessment and analysis, which then identifies which teaching strategies and activities should be used.

www.nzliteracyportal.org.nz/imsdirector.php?resid=2505&ruid=1864

Tax Credit Update: WOTC & Welfare to Work Combine

Effective January 1, 2007 the WOTC is combined with the Welfare to Work Tax Credit. Work Opportunity Tax Credit (WOTC) Employers may claim the WOTC if they hire individuals from groups that are considered to face barriers to employment. The maximum credit is \$2,400 and may be claimed during the individual's first year of employment. The provision extends the current WOTC without modification through 2006. Beginning in 2007, the provision combines the WOTC with the Welfare-to-Work (WTW) credit and extends the combined provision through 2007. Key modifications of the combined credit include expanded eligibility for WOTC (raised age ceiling for food stamp recipients from 25 to 40), revised eligibility requirements for ex-felons (without regard to family income) and a modification of the filing deadline for WOTC claimants from 21 to 28 days.

MRS Addresses Learning Disabilities

✓ In collaboration with the Department of Career Development Adult Education Unit, MRS staff conducted training on learning disabilities for community rehabilitation organizations, as part of the National Institute for Literacy's Bridges to Practice program.

✓ In collaboration with the National Institute for Literacy (NIFL), MRS initiates & shares in the NIFL listserv about topics related to young adults and adolescents with learning disabilities, including a recent national forum on adjudicated youth with learning disabilities.

✓ MRS created a staff guide about obtaining accommodations on the GED test. Information sheets and MRS' electronic learning system are used to publicize and inform staff about new procedures for obtaining accommodations on the test. This particular resource is included with this edition of *Monday Bulletin*.

Family-to-Family Web

The Michigan Family-to-Family Health Information and Education Center (F2FHIEC) web site is now available at: <http://www.bridges4kids.org/f2f/>



The web site is designed as a virtual center for information, education and/or parent-to-parent support. The site's Information & Resources offers information related to: Early Childhood, Transition for Youth, Health Care Coverage and Insurance, Delivering Care in a Medical Home, Health/Disability Specific Organizations, Prescription Assistance, programs that provide health-related services, and much more.

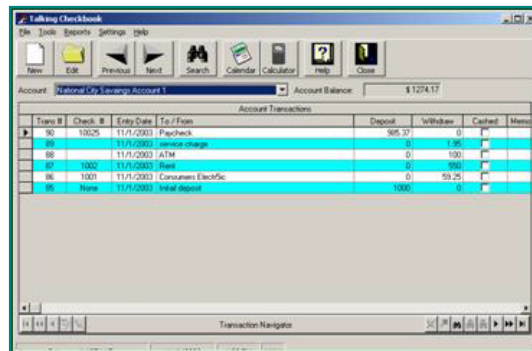
Also on the site are partner newsletters and bulletins and topic-specific Listserv groups. On-site and on-line parent and professional training opportunities offered by F2FHIEC and other organizations are listed, as well as local and state agency contacts. There are even links to parent leadership programs, institutes, employment opportunities, support groups and directories.

NASDSE Satellite Conference Series

For more information see the OSE-EIS Web site at <http://www.michigan.gov/ose-eis>

Accommodation Tip of the Month

THE TALKING CHECKBOOK



- PRWeb.com Newswire

Premier Assistive Technology, a company that produces assistive software for reading and writing, announces the release of its one-of-kind Talking Checkbook, the world's only PC-based talking bank account management software. The Talking Checkbook is designed to make account management and check writing truly accessible. It is designed for individuals who find it difficult to see small print, write in small areas and even for those who find simple math difficult.

Steve Timmer, Chairman and Chief Technology Officer explains that users, "will find using the Talking Checkbook is actually quicker and much easier than manually writing checks. It even handles entries for all types of transactions such as ATM, banking by phone or banking over the Internet".

For more information go to:

www.emediawire.com/releases/2003/11/emw89577.php



IDEA & Transition Planning Articles

Find a wealth of resources on supporting students with Learning Disabilities through school, transition and more at: <http://www.schwablearning.org/>

Please forward or print this bulletin for others

E-mail your contributions or ideas for "Monday Bulletin on Services to Youth" to Lynn Boza:

bozal@michigan.gov or call 517/241-3957.

To subscribe, contact Lynn Boza as above.

Views expressed in Monday Bulletin articles are not necessarily the views of the Michigan Department of Labor & Economic Growth nor Michigan Rehabilitation Services.

Online Professional Development Courses

DISABILITY, WORKPLACE & EMPLOYMENT SUPPORT PRACTICE

The Employment and Disability Institute at Cornell University's School of Industrial and Labor Relations announced the creation of online professional development courses and certificates in Disability, Workplace & Employment Support Practice. ediONLINE is a virtual classroom that provides a series of online courses related to improving employment outcomes for individuals with disabilities. These courses specifically target managers, practitioners, advocates and policy makers in the area of disability. To learn more about the available courses, see:

<http://www.ilr.cornell.edu/edi/edionline/edionline.cfm>

SCHOLARSHIPS REWARD STUDENT COMMUNITY INVOLVEMENT

Application Deadline: FEBRUARY 15, 2007

The 2007 Best Buy Scholarship Program will award scholarships to students based on their outstanding commitment to and involvement in community service, along with a solid academic performance. Maximum Award: \$10,000. Eligibility: high school seniors currently enrolled in an accredited U.S. school, graduating with plans to enter a full-time undergraduate course of study at an accredited two or four-year college, university or vocational technical school in the U.S. no later than fall 2007. See: <http://communications.bestbuy.com/communityrelations/scholarships.asp>

SCHOLARSHIP FOR TRAVEL TO COSTA RICA

Application Deadline: MARCH 2, 2007

Explore Costa Rica with 12 other emerging leaders with and without disabilities! Participate in an exciting cross-cultural and cross-disability exchange program. Become an ambassador of disability pride by sharing cross-cultural disability perspectives with members of the local community. Develop leadership skills, build self-confidence, make friends, and learn Spanish! Experience Costa Rican culture, food and customs by living with a host family. First time travelers with disabilities between the ages of 18 - 24 years who are from cultural minority backgrounds or of low socioeconomic status are strongly encouraged to apply. See: <http://www.miusa.org/exchange>.

From: REFERENCE POINTS, administered by the TATRA Project at PACER Center www.pacer.org.

Save the Dates Events & Training

FEBRUARY

Career & Technical Preparation Conference

February 11-13, 2007

Detroit Marriott

Sponsored by Michigan Department of Labor & Economic Growth & Ferris State University,

Metro Detroit Rehabilitation Association Training

"Achieving Success with Hard to Place Populations"

February 12, 2007

DeCarlo's Banquet & Convention Center, Warren, MI

Contact: Terrie Hylton 248-706-2600

hyltont@michigan.gov

67th Annual Council for Exceptional Children Conference

February 28- March 2, 2007

Grand Plaza Hotel in Grand Rapids

More info at: michigancec.org

MARCH

Annual Transition Services Conference

"Taking Care of Business"

March 5-7, 2007

Bavarian Inn, Frankenmuth, MI

More information at: <http://www.michigantsa.com/>

Walk Wheel & Roll 2007

Sponsored by the Ann Arbor Center for Independent Living

March 17, 2007 , 10 am - 2 pm

Eastern Michigan University's Bowen Field House, Ypsilanti.

More info at: <http://www.aacil.org/>

APRIL

Workshop with Denise Bissonnette

April 11, 2007

Sponsored by Michigan Rehabilitation Association's Job Placement Division

MAY

MI-AHEAD Conference

May 17 & 18, 2007

Radisson Hotel, Lansing, MI

More info coming soon: <http://www.mi-ahead.org>