

# Monday Bulletin on Services to Youth

To Coordinate... To Enhance... To Serve... Through Communication...

## Youth Leadership Forum

Accepting applications until  
January 15, 2008

The 2008 Michigan Youth Leadership Forum (MYLF) is now taking applications for the summer of 2008 program. All high school sophomores, juniors or seniors with a disability (have an IEP) are eligible to apply. This five day program has proven to be life changing to the attendees. There is no cost for a student to attend. Applications must be received no later than January 15, 2008. If you require the application in alternative format or hard copy contact William B. Milzarski at [milzarskiw@michigan.gov](mailto:milzarskiw@michigan.gov)

Please visit: [www.MYLF.org](http://www.MYLF.org)



## Facts from NLTS2: Secondary School Experiences of Students with Autism

A recently published fact sheet from the National Longitudinal Transition Study-2 provides a national snapshot of the secondary school experiences of students with autism. Approximately 1,000 youth with autism are included in NLTS2's nationally representative sample of more than 11,000 students with disabilities.

The following questions are addressed in the fact sheet:

- What is the pattern of course taking of secondary-school-age students with autism and in what settings are courses taken?
- What are the characteristics of classroom instruction provided to students with autism, and how do they differ in general, vocational, and special education classes?
- What types of accommodations, services, and supports do schools provide to students with autism?

The fact sheet is available in PDF format

<http://ies.ed.gov/ncser/pdf/20073005.pdf>

Information can also be found on the NLTS2 web site at: <http://www.nlts2.org/>

## In Brief: A Synthesis of Three NLTS2 Reports

Information needed to improve the education and outcomes of students with disabilities has been compiled by the U.S. Department of Education in the document: *"National Longitudinal Transition Study-2: A Synthesis of Three NLTS2 Reports on Going to School, Youth Achievements and Services and Supports."* This document synthesizes three reports in order to describe classroom contexts and instruction, highlight student outcomes, discuss challenges faced in providing services for youths with disabilities, and propose possible policy next-steps according to the data.

The report is available in PDF format at:

<http://projectforum.org/docs/NLTS2forweb.pdf>

From: The National Center on Learning Disabilities and Reference Points

## Ralph Lynam Leadership Institute for Deaf & Hard of Hearing Youth

Ralph Lynam Leadership Institute is designed to help Deaf and hard of hearing high school students, currently in grades 10-12, develop leadership techniques, self-determination, become responsible citizens in their communities, and learn personal skills to become strong future leaders. Students will receive training from presenters in the fields of advocacy, assistive devices, civil rights, prevention strategies targeted against substance/violence abuse, goal setting, and team building. Activities include bowling, swimming, Michigan Capitol tour, an open-captioned movie theatre and a dance. Most of the presenters are Deaf or hard of hearing.

**When:** Sunday, June 17, 2007 - Friday, June 22, 2007

**Where:** Michigan State University,  
East Lansing, Michigan 48824

**Fees:** \$275.00 (Scholarships available from local Lions, Kiwanis, MRS, CMH agencies, etc.)

For more information and an application see:  
[www.madhh.org](http://www.madhh.org) and click on Youth Programs.

## Assistive Technology for People with Sensory Impairments

DO-IT has created training materials on making science and computer technology accessible to individuals with sensory impairments. They are designed for individual as well as large-group presentations. Materials include DVDs and handouts from the Alliance for Access to Science, Technology, Engineering, and Mathematics (AccessSTEM) and the Alliance for Access to Computing Careers (AccessComputing) at the University of Washington in Seattle. The development and distribution of these materials is funded by the National Science Foundation (NSF Cooperative Agreement #0227995 and grant #CNS-0540615).

Most of these materials are available on the DO-IT web site at <http://www.washington.edu/doit>. At this location you will also find a Knowledge Base of questions and answers, case studies, and promising practices. Select the "Search DO-IT Knowledge Base" link on the vertical bar on the left side of the DO-IT home page.

Note that the DVDs include talking menus to assure that they can be operated by individuals who are blind. In addition, all of the video presentations on the DVDs are open captioned and an audio described version of each is included.

## DeafBlind Transition Camp

This is an exciting opportunity for DeafBlind teenagers who are considering college. This year, the camp will be open nationally and is being provided free of charge through grants and contributions. Interested teens only need funding for transportation to and from Michigan State University. See the flyer on page 4 of this Monday Bulletin and the DB Central web site for more details at: [www.dbcentral.org](http://www.dbcentral.org)

## Michigan Symposium and Students Successful!

### Students with Intellectual Disabilities in College

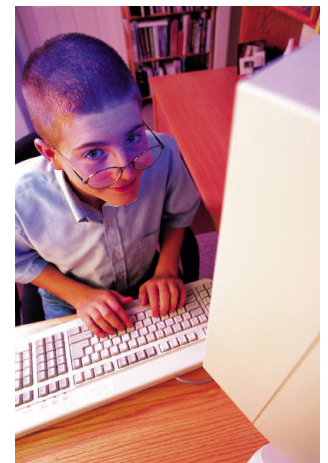
An article in the Detroit Free Press highlights the success of students with intellectual disabilities who attend college. The article was written in response to the Think College Symposium held at the University of Michigan-Dearborn in November. To read the full article, click this link: <http://www.freep.com/apps/pbcs.dll/article?AID=/20071106/NEWS05/711060326/1001/NEWS>

## Tech in the Classroom

Resources and ideas for integrating technology in the classroom are posted on the Adult Literacy Education Wiki web site. Many of these ideas come from a professional discussion list.

Consider these questions posed on the site:

- What does technology integration mean?
- What does it look like in practice?
- What model of technology integration works best given program resources and goals, and student needs?



Learn more at:

<http://wiki.literacytent.org/index.php/ClassroomPractices>

# Save the Dates Events & Training

## FEBRUARY 2008

### Universal Education: Principles, Practices, and Outcomes

February 7, 2008

Fairlane Center, University of Michigan- Dearborn  
Dearborn, Michigan

Karen Hobden: 313-577-7980 or [khobden@wayne.edu](mailto:khobden@wayne.edu)

### Michigan Career Education Conference

February 10-12, 2008

Detroit Marriott at the Renaissance Center  
Detroit, Michigan

Registration online at: <http://www.ferris.edu/ucel/cpd/octp/careerconf.htm>

## March

### Michigan Transition Services Association Annual Conference "Today's Vision - Tomorrow's Reality"

March 5-7, 2008

Bavarian Inn,  
Frankenmuth, MI

For more information contact Jo Cherry at [Joc@sjcisid.org](mailto:Joc@sjcisid.org) or <http://www.michigantsa.com/Conference%20Page.htm>

## April

### 2008 Michigan AER Annual Conference

"Skillfully Addressing New Challenges"

April 24-25, 2008

Marriott at Laurel Park Place, Livonia

Details at <http://www.maerbvi.org/conference.htm>

## Please Forward or Print Monday Bulletin

E-mail your contributions or ideas for "Monday Bulletin on Services to Youth" to Julie Eckhardt: [jewel@chartermi.net](mailto:jewel@chartermi.net) or call 231/590-2764. To subscribe, contact Julie Eckhardt. Views expressed in Monday Bulletin articles are not necessarily the views of the Michigan Department of Labor & Economic Growth nor Michigan Rehabilitation Services.

## On-Line Training Opportunities

### School Counselors: Facilitating Transition for Students with Disabilities

From the IRIS Center. More information can be found at <http://iris.peabody.vanderbilt.edu/cou2/chalcycle.htm>

### Graduate Level Coursework in Transition Education and Services

Sponsored by the Transition Coalition at the U of KA; courses include "Intro to Transition Ed and Services", "Transition Assessments", Family Involvement and Student Involvement in Transition", "Preparing Students for Employment and Postsecondary Education", and "Interagency Collaboration during Transition Planning". For more information go to: <http://www.continuinged.ku.edu/is/sped.shtml>

### Individual Supports to Increase Access to an Inclusive College Experience for Students with Intellectual Disabilities

Offered by the On-Campus Outreach project at the U of MA. The purpose of this online training module is to provide guidance on developing an Individual Support Model (ISM) to increase access to inclusive college experiences and to improve chances for the success of students with intellectual disabilities. More information can be found at [http://www.education.umd.edu/oco/training/oco\\_training\\_modules/IndividualSupports/start.html](http://www.education.umd.edu/oco/training/oco_training_modules/IndividualSupports/start.html)

### Effective Career Planning, Job Development, and Job Coaching

Sponsored by TRN, Inc, these three, two-week 20 hour courses are taught by nationally recognized experts in the field. For more information go to <http://www.trninc.com/entry/welcome2.asp>

### Understanding Disability Legislation: An Online Course for National Service Programs

The Corporation for National & Community Service's Resource Center offers free online courses on a wide variety of topics to help strengthen national service programs. Several of these courses are designed to actively involve individuals with disabilities in these programs. See the "Inclusion" section of the online course list for more information. <http://nationalserviceresources.org/resources/courses/>

From REFERENCE POINTS an activity of TATRA, a project of PACER Center <http://www.PACER.org>



# DEAFBLIND TRANSITION CAMP

*June 22—25, 2008*



**Concerned about the future, because you are:**

**Going to college?**

**Looking for a career?**

Come to this **FREE**, informative, and **FUN** camp!

Stay in a dorm at MSU to see what college life might be like!

Meet DeafBlind adults who have gone to college and/or are competitively employed!



- For young adults, who are DeafBlind, ages 16—19 years old
- Held at Michigan State University in East Lansing, Michigan
- For more information contact:

**Jill Gaus**  
Jagaus@sbcglobal.net  
517-764-6178 (V/TTY/VP)

or

**Beth Kennedy**  
Beth.Kennedy@cmich.edu  
(888) 758-0508 (V/TTY)

**Registration materials will be available (after 1/31/08) at [www.dbcentral.org](http://www.dbcentral.org)**