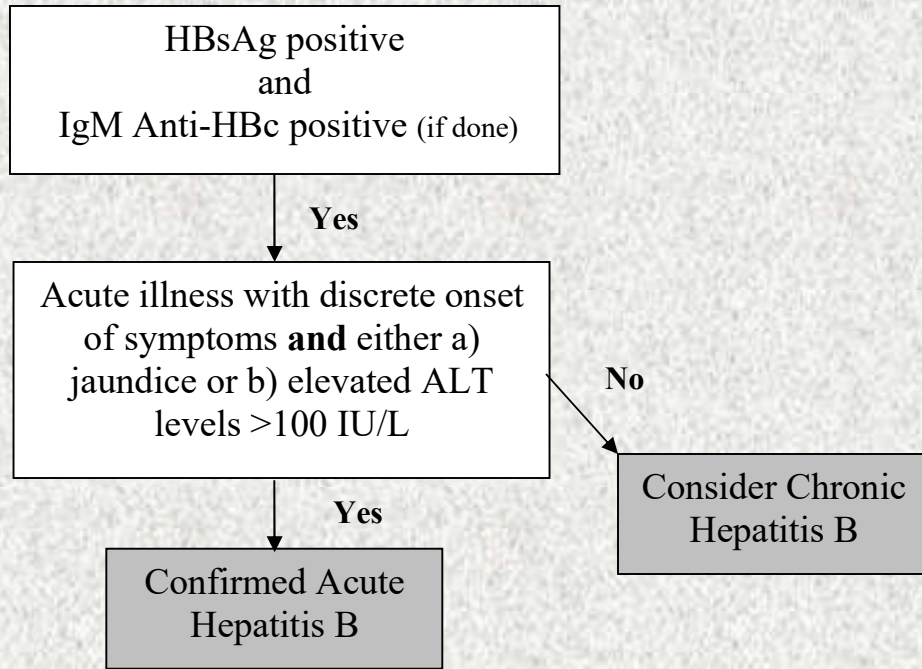


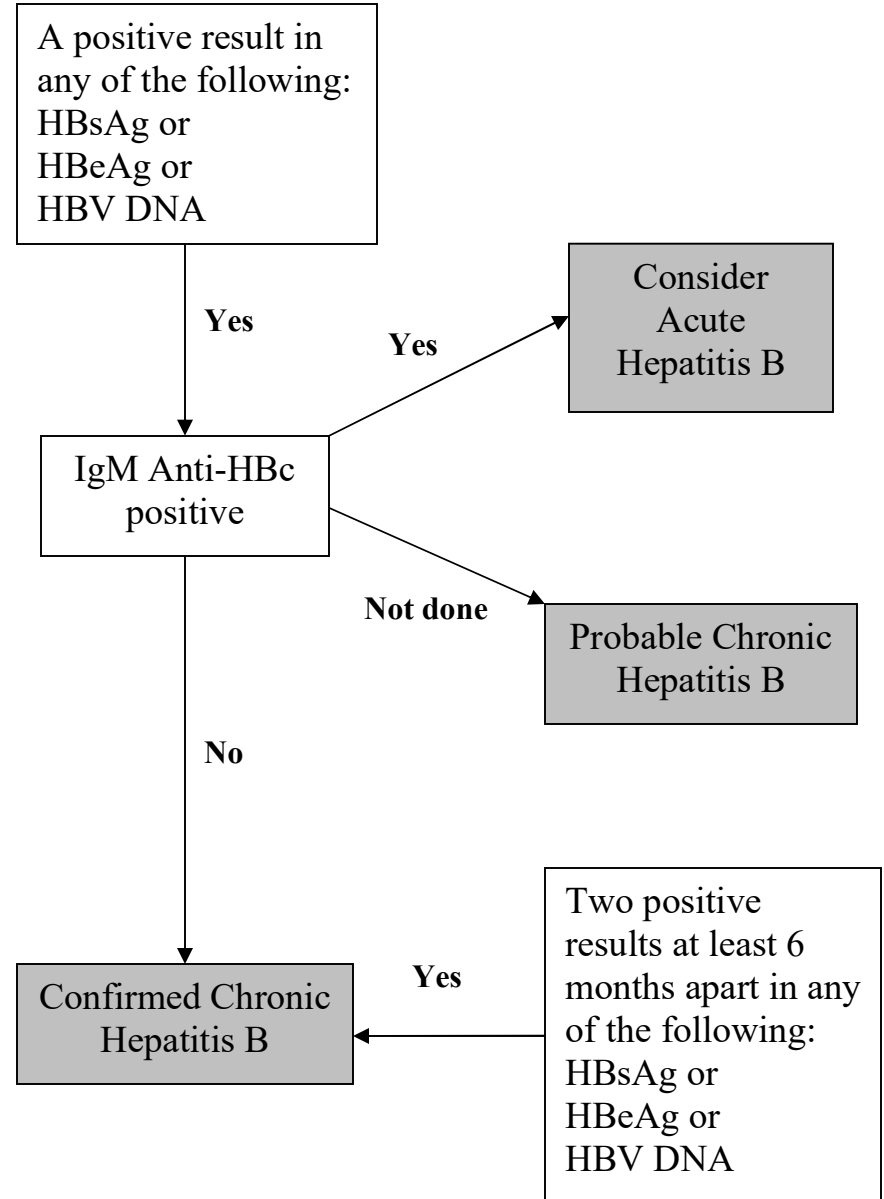
Hepatitis B Reporting Flowchart

Acute



Confirmed = lab confirmed and meets case definition of an acute or chronic hepB case
Confirmed nonresident = confirmed result, but is not a resident of MI
Non-Michigan case = no follow-up conducted; transferred to another state
Not a case/Canceled = case does not meet case definition for acute or chronic hepB
Probable = a positive HBsAg, HBeAg or HBV DNA result, without an anti-HBc result and does not meet case definition of an acute case
Suspect or Unknown = not generally used for hepB; not enough information
Active = new case currently under investigation; **NEW** = new case, no information yet
Completed = investigation completed
Completed –Follow up = used to update information on a previously completed investigation.
 Cases must be **Completed** or **Completed –Follow up** to be reported to CDC.
Review = used by some LHDs to indicate under review
Superceded = used when closing chronic hepB cases (and after verification of pregnancy for women of childbearing age) who were previously entered in MDSS as a chronic hepB.
See case definitions below = for additional information

Chronic



Hepatitis B, Acute – 2012 Case Definition

Clinical Description

An acute illness with a discrete onset of any sign or symptom* consistent with acute viral hepatitis (e.g., fever, headache, malaise, anorexia, nausea, vomiting, diarrhea, and abdominal pain), and either a) jaundice, or b) elevated serum alanine aminotransferase (ALT) levels >100 IU/L.

*A documented negative hepatitis B surface antigen (HBsAg) laboratory test result within 6 months prior to a positive test (either HBsAg, hepatitis B “e” antigen (HBeAg), or hepatitis B virus nucleic acid testing (HBV NAT) including genotype) result does not require an acute clinical presentation to meet the surveillance case definition.

Laboratory Criteria for Diagnosis

HBsAg positive, AND Immunoglobulin M (IgM) antibody to hepatitis B core antigen (IgM anti-HBc) positive (if done)

Case Classification

Confirmed

A case that meets the clinical case definition is laboratory confirmed, and is not known to have chronic hepatitis B.

Hepatitis B, Chronic – 2012 Case Definition

Clinical Description

No symptoms are required. Persons with chronic hepatitis B virus (HBV) infection may have no evidence of liver disease or may have a spectrum of disease ranging from chronic hepatitis to cirrhosis or liver cancer.

Laboratory Criteria for Diagnosis

Immunoglobulin M (IgM) antibodies to hepatitis B core antigen (IgM anti-HBc) negative AND a positive result on one of the following tests: hepatitis B surface antigen (HBsAg), hepatitis B e antigen (HBeAg), or nucleic acid test for hepatitis B virus DNA (including qualitative, quantitative and genotype testing), OR HBsAg positive or nucleic acid test for HBV DNA positive (including qualitative, quantitative and genotype testing) or HBeAg positive two times at least 6 months apart (Any combination of these tests performed 6 months apart is acceptable)

Case Classification

Probable

A person with a single HBsAg positive or HBV DNA positive (including qualitative, quantitative and genotype testing) or HBeAg positive lab result and does not meet the case definition for acute hepatitis B.

Confirmed

A person who meets either of the above laboratory criteria for diagnosis.

Comment

Multiple laboratory tests indicative of chronic HBV infection may be performed simultaneously on the same patient specimen as part of a “hepatitis panel.” Testing performed in this manner may lead to seemingly discordant results, e.g., HBsAg-negative AND HBV DNA-positive. For the purposes of this case definition, any positive result among the three laboratory tests mentioned above is acceptable, regardless of other testing results. Negative HBeAg results and HBV DNA levels below positive cutoff level do not confirm the absence of HBV infection.