

A Current Sentinel Provider's Testimony

"As a large integrated health system, Spectrum Health is privileged to align with external partners to deliver both care and value to our patients.

Our participation with the State of Michigan Outpatient Influenza-like Illness Surveillance Network (ILINet) has been a highly successful collaboration. Along with the CDC, the State of Michigan, and local health departments, we are able to proactively monitor influenza disease throughout the year.

This program offers free influenza lab testing through the state, weekly updates on local and national flu activity, and free registration for participating sites at the MDHHS Fall Immunization conference. The many benefits of ILINet makes Spectrum Health proud to be an active participant."

- Mary Zimmerman RN, BSN
Immunizations Program Specialist
Spectrum Health

Have questions? Contact the Michigan Department of Health and Human Services or your local health department:

Shelly Doeblner, MPH
Influenza Epidemiologist
Michigan Department of Health and Human Services, Division of Immunization
Email: doeblerm@michigan.gov
Phone: 517-284-4874
Fax: 517-335-9855

Michigan ILINet Enrollment Form

Your Name: _____

Practice Name: _____

Practice Specialty:

Check one: Family Practice Pediatrics
 Student Health Emergency Medicine
 Internal Medicine Urgent Care
 Infectious Disease Other

Address: _____

City & Zip Code: _____

Office Phone: _____

Office Fax: _____

Please supply an email address as it is the primary communication method with sentinel providers.

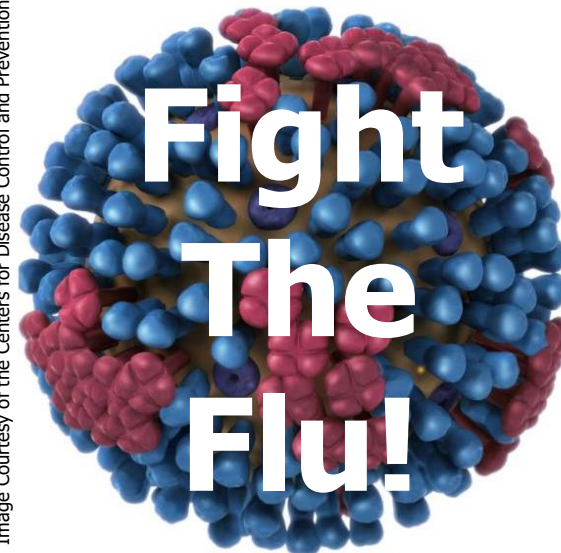
Email: _____

Will you use a case-based (manual tally) or electronic (EMR) method to report:

Case-based Electronic Combination of both

Please email completed form to
Michigan Department of Health and
Human Services,
Attn: Shelly Doeblner
Email: doeblerm@michigan.gov

Image Courtesy of the Centers for Disease Control and Prevention



Join the
Outpatient
Influenza-like
Illness
Surveillance
Network
-ILINet-

Overview of Influenza Sentinel Provider Surveillance

Influenza is a complex disease, and it's difficult to measure its true burden on the population. The U.S. Outpatient Influenza-like Illness Surveillance Network (ILINet) is a collaborative partnership between clinicians, local health departments, Michigan Department of Health and Human Services (MDHHS), and the Centers for Disease Control and Prevention (CDC). The ILINet program assists with state, national, and global influenza surveillance by providing vital epidemiological and virologic data.

Why is Sentinel Influenza Surveillance Important?

- Influenza is unpredictable, and severity can vary from season to season.
- Flu is responsible for numerous hospitalizations and deaths in Michigan each year.
- Routine flu surveillance helps us know when and where flu activity is occurring, determine what flu viruses are circulating, detect changes in viruses, and measure the impact flu has on hospitalizations and death.
- Seasonal flu surveillance is pandemic preparedness. The 2009 H1N1 flu pandemic was first confirmed in Michigan by a sentinel provider.
- Data collected by sentinel providers assist in selecting virus strains to be included in the next season's flu vaccines.



Last updated August 2019

Who Can Be an Influenza Sentinel Provider?

Outpatient flu sentinel providers may be healthcare clinicians from any specialty (e.g. family practice, pediatrics, internal medicine) and nearly any setting (e.g. private practice, emergency room, urgent care, school health center) who are likely to see patients with flu-like illness.

Only providers who primarily care for institutionalized populations (e.g. nursing homes, prisons) are not eligible to become sentinel providers.

What Are the Responsibilities of an Influenza Sentinel Provider?

Data Collection and Reporting

- Collect the weekly count of patient visits due to influenza-like illness* (ILI) by 5 age categories AND the total number of patient visits each week.
- Report data to CDC on a weekly basis via internet.

*ILI = Fever $\geq 100^{\circ}\text{F}$ AND cough and/or sore throat (without a known cause other than influenza); ILI visits do NOT need to be lab-confirmed.

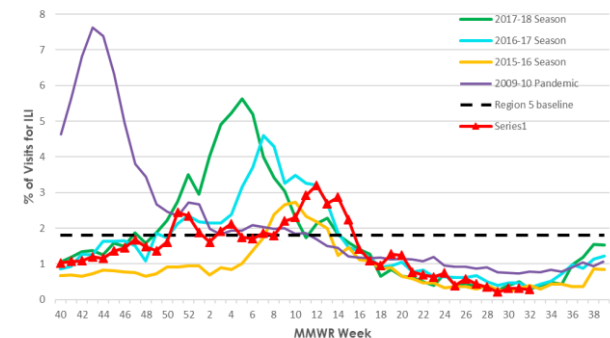
Laboratory Specimen Collection

- Sentinel providers can receive **free** laboratory testing at MDHHS Bureau of Labs for ~11 specimens per site per year (optional).
- Collect nasopharyngeal swabs from a subset of your ILI patients and submit for respiratory virus panel testing.
- MDHHS sends providers lab kit supplies and pays for shipping.

What are the Advantages of Being an Influenza Sentinel?

- Weekly feedback reports summarizing your site's data, regional, state, and national flu data.
- **Free** respiratory virus testing at MDHHS Bureau of Labs for ~11 specimens per year.
- Sentinels who report regularly (i.e. at least 1/2 the weeks of the year) receive **2 free** registrations to an MDHHS Fall Regional Immunization Conference.
- Updates from the Michigan Health Alert Network (MIHAN).
- Your community is represented in regional, state, and national flu surveillance data.

Percentage of Visits for Influenza-like Illness (ILI) Reported by the U.S. Outpatient Influenza-like Illness Surveillance Network (ILINet): Michigan, Select Seasons



The Michigan Department of Health and Human Services (MDHHS) does not discriminate against any individual or group because of race, religion, age, national origin, color, height, weight, marital status, genetic information, sex, sexual orientation, gender identity or expression, political beliefs or disability.