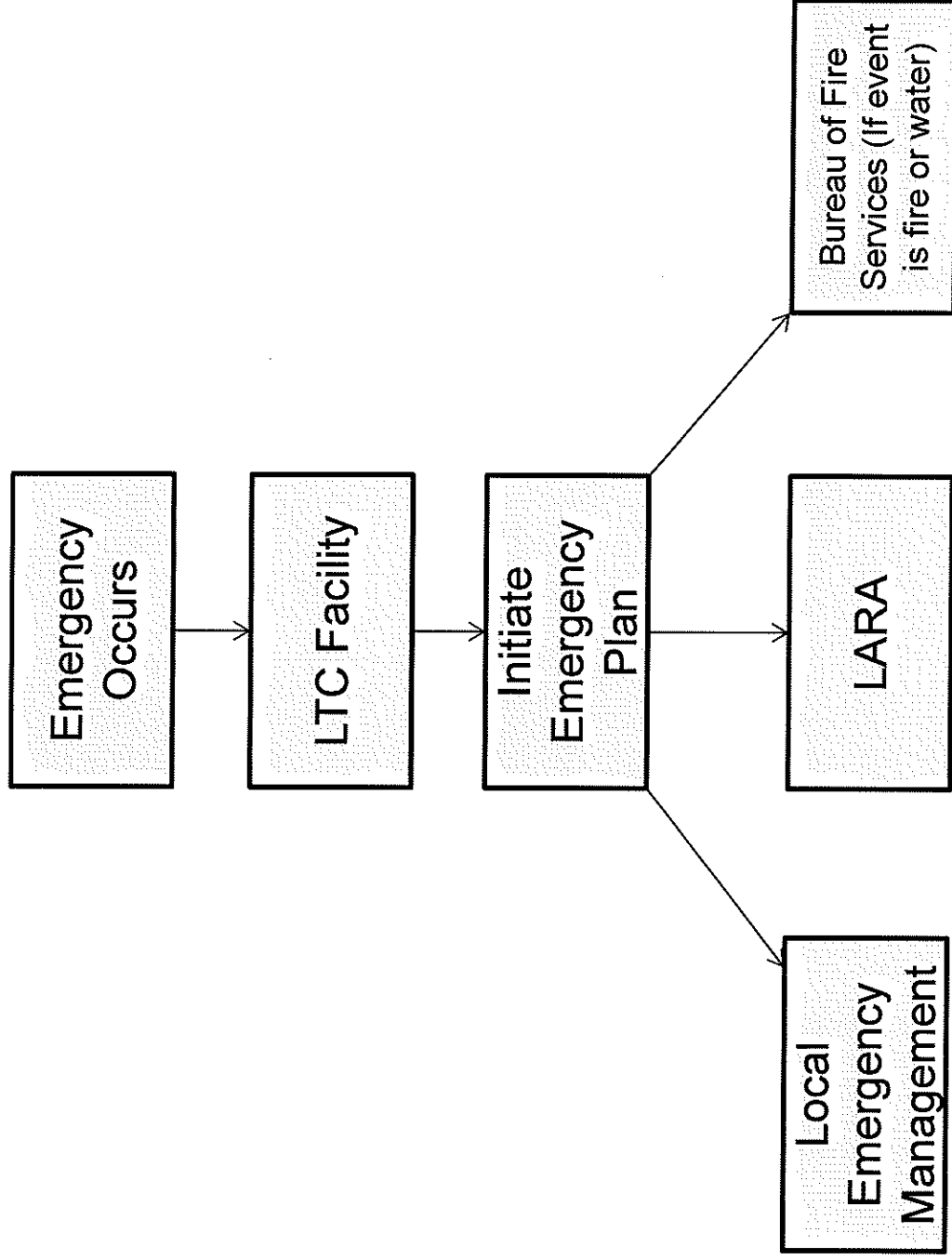
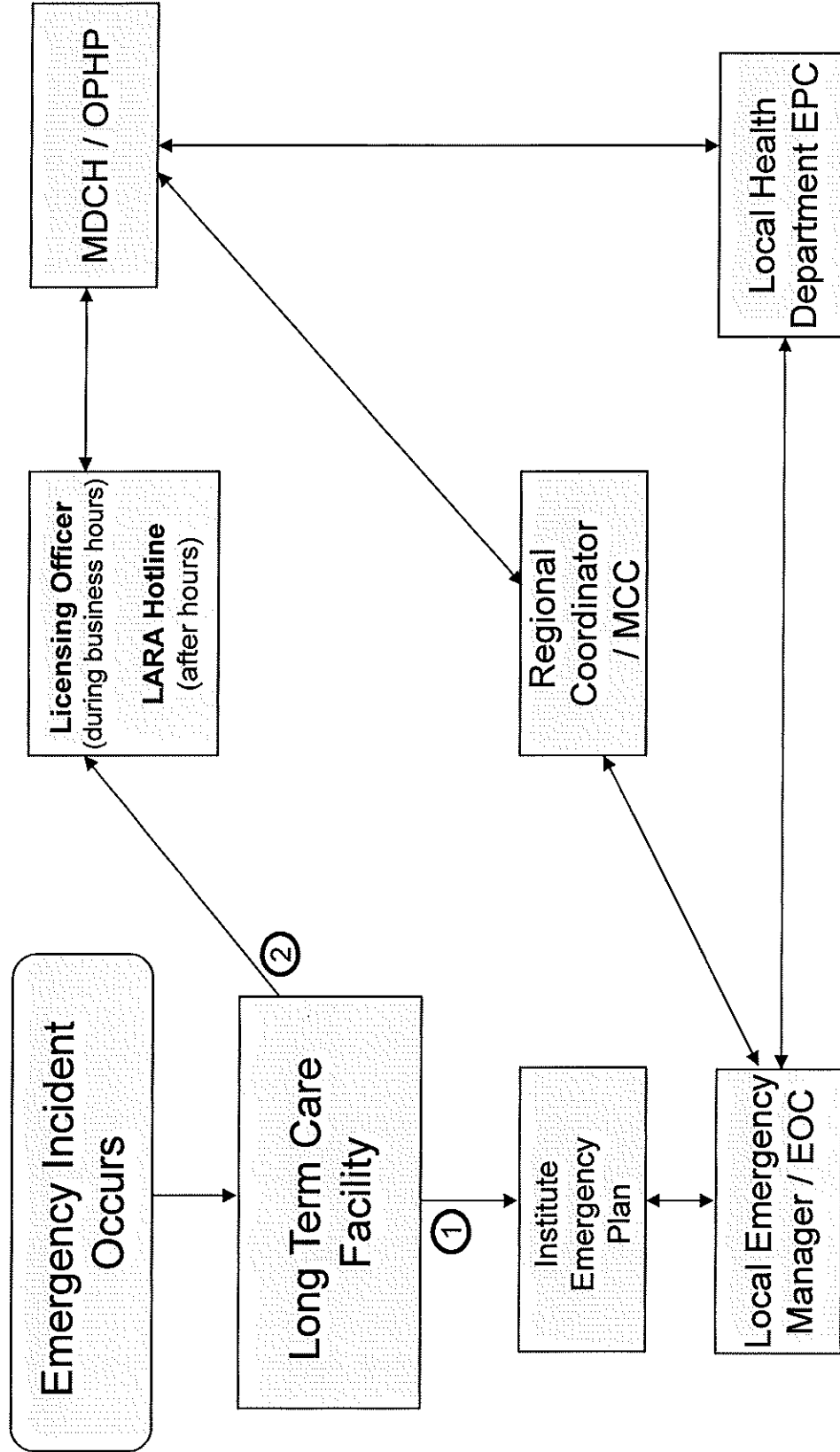


Immediate Action

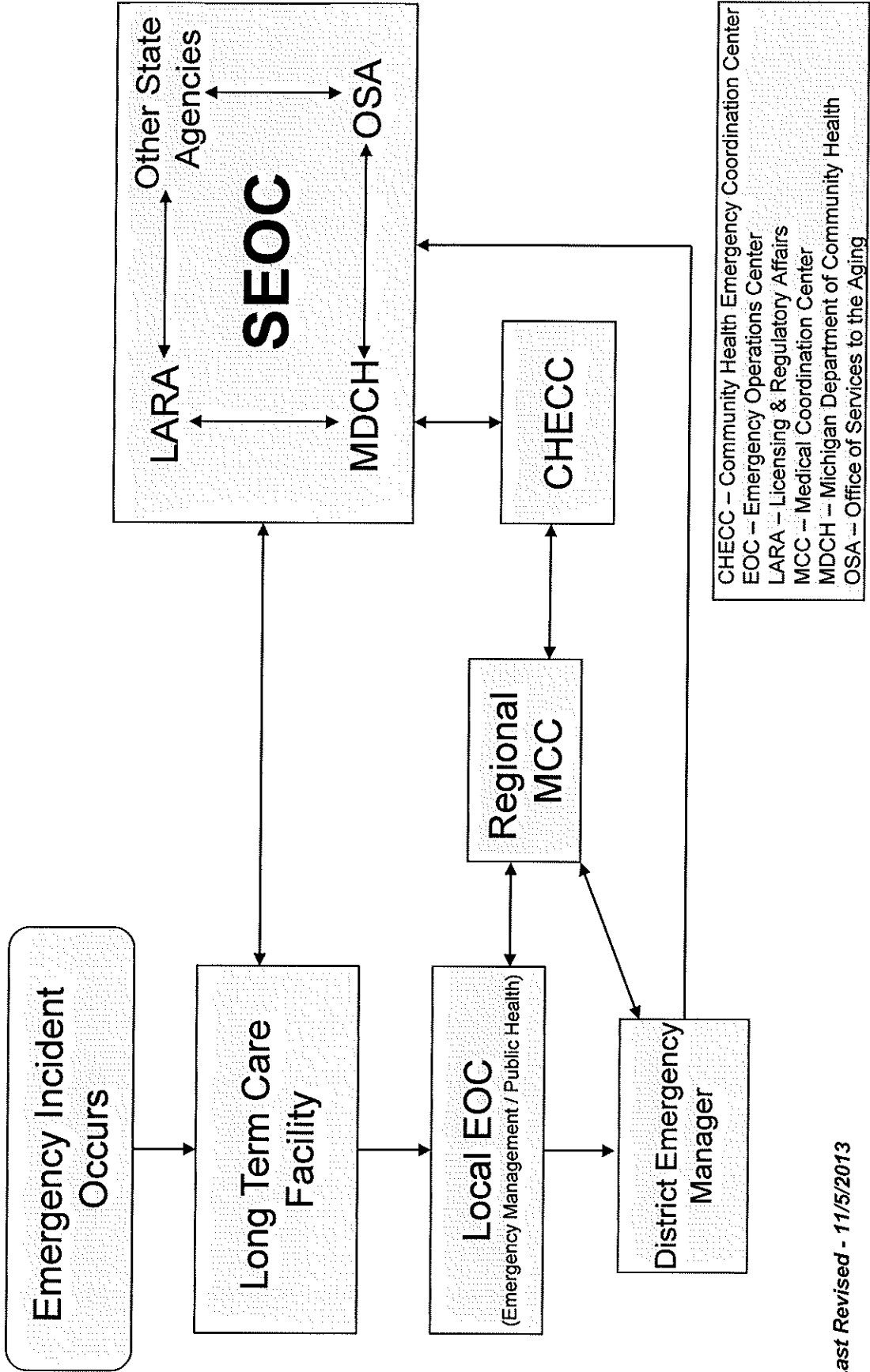


Daily Emergency Requiring Additional Assistance



LARA – Licensing & Regulatory Affairs
 MCC – Medical Coordination Center
 MDCH – Michigan Department of Community Health
 OPHP – Office of Public Health Preparedness

State Emergency Operations Center (SEOC) Activated
Ongoing Incident



CHECC – Community Health Emergency Coordination Center
 EOC – Emergency Operations Center
 LARA – Licensing & Regulatory Affairs
 MCC – Medical Coordination Center
 MDCH – Michigan Department of Community Health
 OSA – Office of Services to the Aging

Activation Descriptions for Communications Pathway Algorithms

Community Health Emergency Coordination Center (CHECC)

The Michigan Department of Community Health (MDCH) Community Health Emergency Coordination Center (CHECC) supports the SEOC (when activated) by providing real-time public health information, subject matter expertise, and strategic countermeasure distribution. When activated, the CHECC is NIMS compliant and staffed primarily by MDCH personnel.

Emergency Operations Center (EOC)

Local EOC will notify District Emergency Manager and District Emergency Manager contacts the State Emergency Operations Center (EOC). If needed the regional Medical Coordination Center (MCC) will be contacted for additional medical assistance.

Licensing and Regulatory Affairs (LARA)

The LTC Licensing and Monitoring Office contacts the LARA, Emergency Management Coordinator (EMC). The LARA EMC contacts other department EMCs and/or SEOC during an activation or event as resources and/or potential coordination is requested. Additional assistance may be required through the Centers for Medicare and Medicaid Services (CMS) depending on the event.

Long Term Care Facilities

1. Long Term Care Facility contacts their local Emergency Manager or local Emergency Operations Center (EOC) if operational.
2. Long Term Care Facility contacts LARA Licensing and Monitoring Office Hotline, if appropriate and/or Licensing Officer to report an event.

Medical Coordination Center (MCC)

The Regional MCC is intended to support local EOC's as a medical resource to local emergency management. The Regional MCC helps to facilitate the standardization and interoperability of health care operations and helps to ensure the optimum and efficient use of resources, while assisting with the provisions of a flexible, coordinated, uninterrupted health response.

State Emergency Operations Center (SEOC)

During a statewide emergency, the SEOC is the primary point of command for coordinating state emergency response and recovery activities. The Michigan State Police Emergency Management and Homeland Security Division (MSP-EMHSD) equip the SEOC for operations. The SEOC is staffed by state department Emergency Management Coordinators (EMC), who shall act as a liaison between his or her department or agency and the emergency division of the department in all matters of emergency management, including the activation of the Michigan emergency management plan.