



STATE OF MICHIGAN
 DEPARTMENT OF HEALTH AND HUMAN SERVICES
 LANSING

RICK SNYDER
 GOVERNOR

NICK LYON
 DIRECTOR

Newborn Screening Program for Critical Congenital Heart Disease

Michigan Hospital Emergency Room Provider:

This infant was born at home on ____/____/____

The newborn is presenting in your Emergency Department for follow-up because at approximately twenty-four hours of life he/she was screened for Critical Congenital Heart Disease (CCHD) using pulse oximetry and **did not pass the screening**.

The screening results were:

Date/Time of Screen	Right Hand (RH)	Foot	Difference	Result (Pass, Fail, Rescreen)

As part of your initial triage on the infant we are asking that you re-check the pulse ox on the infant's **Right Hand** and **One Foot**. Using the limits defined by the algorithm (see attached), determine if the infant needs further follow-up (pulse ox of 94% or below, or a difference of 4% or greater between the readings).

The Michigan public health code mandates that all newborns be screened for CCHD using pulse oximetry as close to twenty-four hours of life as possible. Infants should be screened using the Michigan recommended screening algorithm.

Infants who fail the screen in the hospital are immediately referred for an evaluation, often including follow up with a pediatric cardiologist/neonatologist and a possible echocardiogram for diagnosing CCHD.

If follow up is needed, upon admittance to the emergency room please consider consulting a pediatric cardiologist or neonatologist.

During the hours of 7 am-4:30 pm you can contact a representative from the MDHHS Newborn Screening program with questions @ 517-284-4992.

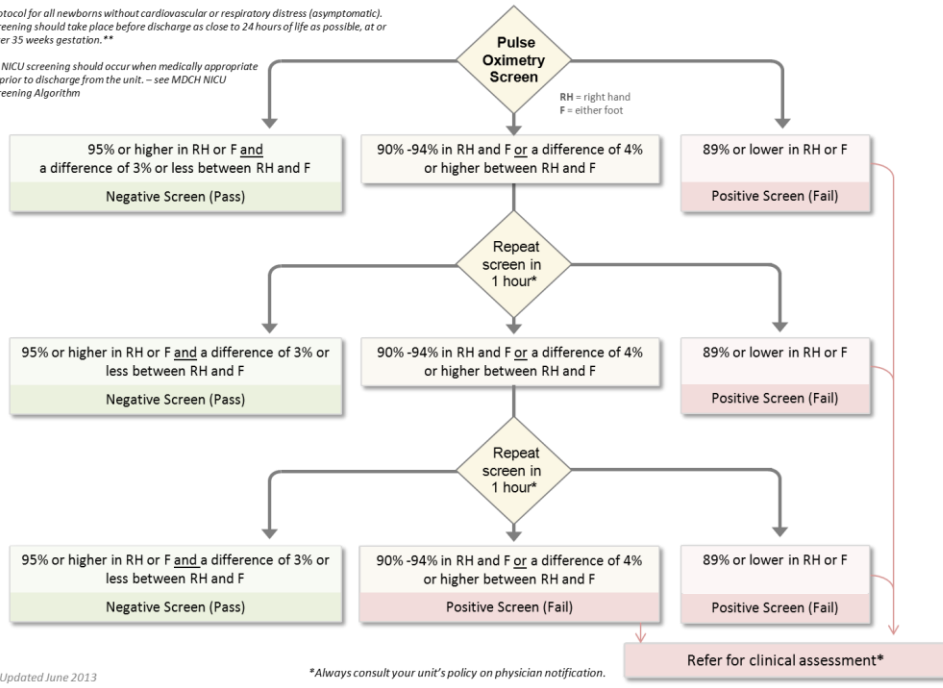
More information about the screening is available at our website www.michigan.gov/cchd

Kristen Thompson, MPH
 Newborn Screening Coordinator

Michigan Algorithm for Pulse Oximetry Screening

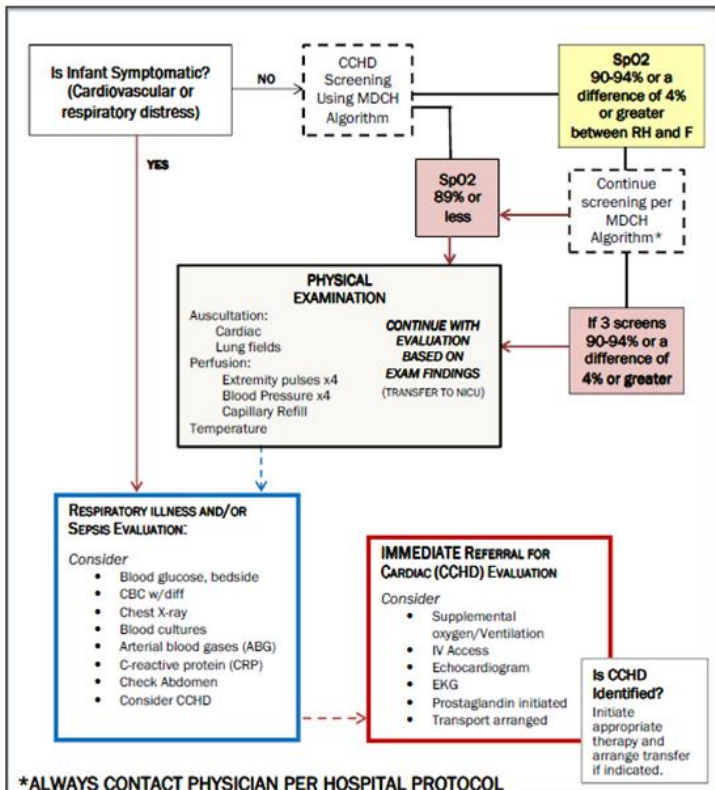
Protocol for all newborns without cardiovascular or respiratory distress (asymptomatic). Screening should take place before discharge as close to 24 hours of life as possible, at or after 35 weeks gestation.**

** NICU screening should occur when medically appropriate or prior to discharge from the unit. -- see MDCH NICU Screening Algorithm



Evaluation of the Newborn Pulse oximetry screening follow-up

Name: _____
MR#: _____



Michigan Newborn Screening Worksheet