



MI Flu Focus

Influenza Surveillance Updates

Bureaus of Epidemiology and Laboratories



Editor: Stefanie Cole, RN, MPH ColeS4@michigan.gov November 18, 2015 Vol. 12; No. 36

Influenza Surveillance Report for the Week Ending November 7, 2015

MI's Influenza Activity Level:
Sporadic

Updates of Interest:

- [National Influenza Vaccination Week](#) (NIVW) is December 6-12; continue to promote flu vaccination before flu is widespread in the community!

Michigan Disease Surveillance System

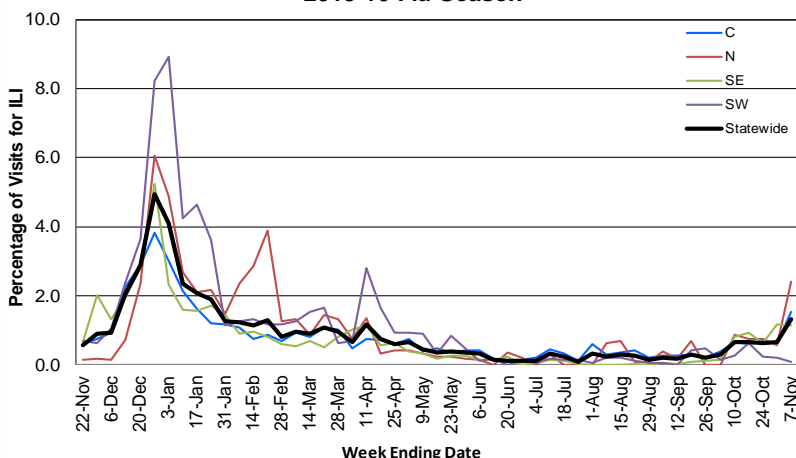
MDSS influenza data indicated that compared to levels from the previous week, aggregate and individual reports had both increased. Aggregate and individual reports were both lower than levels seen during the same time period last year.

Emergency Department Surveillance

Compared to levels from the week prior, emergency department visits from constitutional complaints increased, while respiratory complaints had decreased. Levels of constitutional and respiratory complaints were both lower than those recorded during the same time period last year.

- 8 constitutional alerts (1SE, 3SW, 3C, 1N)
- 6 respiratory alerts (1SW, 4C, 1N)
- Last MIFF report: 8 constitutional alerts (2SE, 3SW, 2C, 1N), 5 respiratory alerts (2SW, 3C)

Percentage of Visits for Influenza-like Illness (ILI) Reported by Sentinel Providers, Statewide and Regions 2015-16 Flu Season



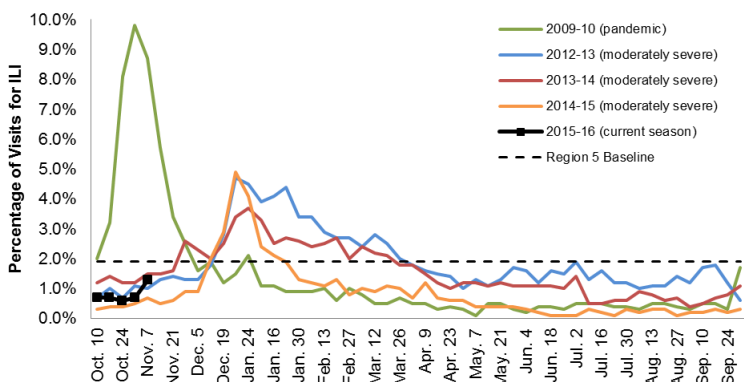
Sentinel Provider Surveillance

The proportion of visits due to influenza-like illness (ILI) increased to 1.3% overall; this is below the regional baseline (1.9%). A total of 147 patient visits due to ILI were reported out of 11,134 office visits. Please note: These rates may change as additional reports are received.

Number of Reports by Region (32 total):

- C (14)
- N (4)
- SE (10)
- SW (4)

Percentage of Visits for Influenza-like Illness (ILI) Reported by the US Outpatient Influenza-like Illness Surveillance Network (ILINet): Michigan, Select Seasons



Become a Sentinel Provider!

As part of pandemic influenza surveillance, CDC and MDHHS highly encourage year-round participation from all sentinel providers. New practices are encouraged to join the sentinel surveillance program today! Contact Stefanie Cole (ColeS4@michigan.gov) for more information.

Table of Contents:

Michigan Surveillance.....1-2
National Surveillance.....3
International Surveillance....3
FluBytes3

Hospital Surveillance

The CDC Influenza Hospitalization Surveillance Project provides population-based rates of hospitalization due to severe influenza illness through active surveillance and chart review of lab-confirmed cases beginning on Oct. 1, 2015, for Clinton, Eaton, Genesee, and Ingham counties. Since Oct. 1, there has been 1 adult hospitalization reported within the catchment area.

The MDHHS Influenza Sentinel Hospital Network monitors influenza hospitalizations reported voluntarily by hospitals statewide, and 12 hospitals (N, C, SE & SW) reported. Results for the 2015-16 flu season are listed in the table below. Additional hospitals are welcome to join; please contact Seth Eckel at eckels1@michigan.gov.

Age Group	New Flu Hospitalizations Reported	Total 2015-16 Flu Hospitalizations Reported to Date
0-4 years	0	0
5-17 years	0	0
18-49 years	1 (SE)	1 (SE)
50-64 years	0	1 (SE)
65 years & older	0	1 (SE)
Total	1 (SE)	3 (SE)

Laboratory Surveillance

MDHHS Bureau of Laboratories reported 1 new positive influenza result: 1 2009 A/H1N1pdm. A total of 11 positive influenza results have been reported for the 2015-16 season. Influenza results for the 2015-16 season are in the table below.

Respiratory Virus	# Positive Respiratory Virus Results by Region				Total	# Specimens Antigenically Characterized	# Tested for Antiviral Resistance
	C	N	SE	SW			# Resistant / Total # Tested
2009 A/H1N1pdm	1		3		4	1* (1 A/California/07/2009-like (H1N1)pdm09**)	
Influenza A/H3			5	2	7		

*Specimens antigenically characterized by CDC; **A/California/07/2009-like (H1N1)pdm09 is the H1N1 component of the 2015-16 Northern Hemisphere flu vaccines.

In addition, 10 sentinel clinical labs (3SE,2SW,5C) reported influenza results. Three labs (SE) reported sporadic influenza A activity. No labs reported influenza B activity. Three labs (SE,SW) reported sporadic or low Parainfluenza activity. Two labs (SE,C) reported sporadic RSV activity. Three labs (SE,SW,C) reported sporadic Adenovirus activity. One lab (SW) reported sporadic hMPV activity. Most testing volumes remain near the moderate range.

Influenza Congregate Settings Outbreaks

There were no new respiratory facility outbreaks reported. There has been a total of 1 respiratory facility outbreak reported to MDHHS for the 2015-16 season. Respiratory facility outbreaks are listed in the table below by facility type and surveillance region.

Facility Type	C	N	SE	SW	Total
K-12 School	0	0	0	1	1
Total	0	0	0	1	1

Influenza-associated Pediatric Mortality

No influenza-associated pediatric deaths have been reported to MDHHS for the 2015-16 season.

National: In the United States, flu activity was low with 1.4% of outpatient visits due to influenza-like illness, which is below the national baseline of 2.1%. No influenza-associated pediatric deaths have been reported for the 2015-16 flu season. Additional information is in the weekly FluView reports available at: www.cdc.gov/flu/weekly/.

International: Globally, influenza activity generally remained low in both hemispheres. Bahrain and Qatar reported increased flu activity (predominantly due to 2009 H1N1), Iran reported increased flu detections (predominantly H3N2), and in Chile ILI activity decreased but remained above expected levels in recent weeks. More information is available at: www.who.int/influenza/surveillance_monitoring/updates/latest_update_GIP_surveillance/en/.

FluBytes



2015-16 SEASONAL FLU ACTIVITY

- [Two Iowans die of influenza](#)

INFLUENZA-RELATED JOURNAL ARTICLES

- *Clinical Infectious Diseases*: [Illness severity and work productivity loss among working adults with medically-attended acute respiratory illnesses: US Influenza Vaccine Effectiveness Network 2012-2013](#)
 - Flu illnesses more severe and resulted in more missed work hours and productivity loss than illnesses not confirmed as flu
 - Modest reductions in illness severity for vaccinated cases
- *Vaccine*: [Vaccine-associated reduction in symptom severity among patients with influenza A/H3N2 disease](#)
 - Among patients with H3N2 infection, seasonal flu vaccine was associated with reduced symptom severity
- [Maternal vaccination against H1N1 influenza and offspring mortality: population based cohort study and sibling design](#)
 - H1N1 vaccination during pregnancy not associated with adverse fetal outcome or offspring mortality, including when familial factors were taken into account
- [On-demand delivery of influenza vaccination](#)
 - UberHEALTH 2014: flu vaccines requested at 2,378 sites, nurses vaccinated 2,057 persons

Archived editions of FluBytes are available [here](#) and MI FluFocus archives are [here](#).

FLU WEBSITES

www.michigan.gov/flu
www.cdc.gov/flu
www.flu.gov
<http://vaccine.healthmap.org/>

AVIAN INFLUENZA INTERNATIONAL NEWS

- [Nigeria reports 4 H5N1 outbreaks as Korea details 12 H5N8 events](#)
- [Cambodia reports H5N1 in ducks; Vietnam notes H5N6 outbreak](#)

AVIAN INFLUENZA NEWS IN NORTH AMERICA

- Any reports of sick or dead birds should be forwarded immediately to the proper agency:
 - For domestic poultry, contact MDARD:
 - M-F 8AM-5PM, 1-800-292-3939
 - After hours/weekends, 517-373-0440
 - For wildlife (die-off of waterfowl, gulls, or shorebirds), contact DNR:
 - M-F 8AM-5PM, 517-336-5030
 - After hours/weekends, 1-800-292-7800

OTHER INFLUENZA-RELATED NEWS

- CDC: [127.9 million doses of flu vaccine distributed in U.S.](#)
- CDC: [2015 National Influenza Vaccination Week \(NIVW\) Key Points](#)
- [National Patient Safety Foundation supports mandatory flu vaccine for healthcare workers](#)
- [Outsmart the flu with UberHEALTH](#)
- *Detroit Free Press*: [Uber to deliver help to sick during flu season](#)

40% OF U.S. ADULTS WAIT UNTIL THE FLU IS IN THEIR AREA TO GET A FLU VACCINE



BUT, FLU ANTIBODIES NEED TWO WEEKS TO DEVELOP

WHEN FEELING SYMPTOMS → NEARLY TWO-THIRDS (62%) FEEL IT'S IMPORTANT TO CONTACT A HEALTHCARE PROFESSIONAL IMMEDIATELY



62%

BUT WHEN SICK



32%

ONLY ONE-THIRD ACTUALLY DO

Source: <http://flu.isebox.net/nfid-flu-preparedness-survey/>

For questions or to be added to the distribution list, please contact Stefanie Cole at ColeS4@michigan.gov.

MDHHS Contributors

Bureau of Epidemiology – S. Bidol, MPH, S. Cole, RN, MPH, S. Eckel, MPH
Bureau of Labs – B. Robeson, MT, V. Vavricka, MS