



MI Flu Focus

Influenza Surveillance Updates Bureaus of Epidemiology and Laboratories



Editor: Stefanie Cole, RN, MPH ColeS4@michigan.gov November 25, 2015 Vol. 12; No. 37

Influenza Surveillance Report for the Week Ending November 14, 2015

**MI's Influenza
Activity Level:**
Sporadic

Updates of Interest:

- The U.S. Food and Drug Administration has [approved Fluad](#), the first seasonal flu vaccine containing an adjuvant, for persons 65 years and older.

Michigan Disease Surveillance System

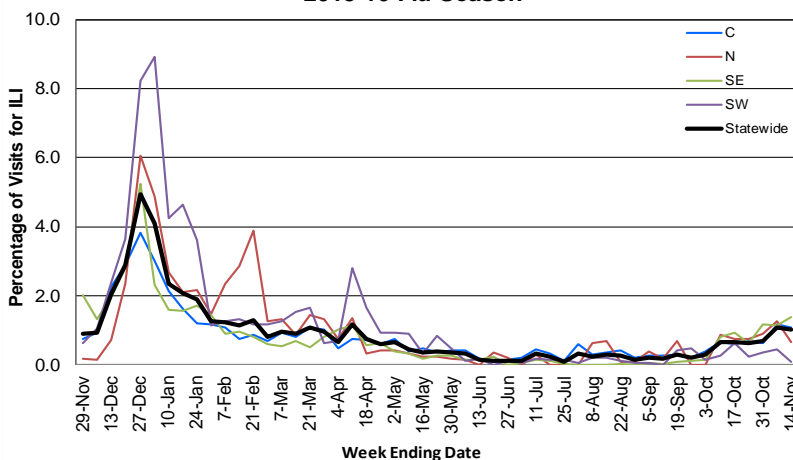
MDSS influenza data indicated that compared to levels from the previous week, aggregate reports had increased while individual reports were similar. Aggregate and individual reports were both lower than levels seen during the same time period last year.

Emergency Department Surveillance

Compared to levels from the week prior, emergency department visits from constitutional complaints were similar, while respiratory complaints increased. Levels of constitutional and respiratory complaints were both lower than those recorded during the same time period last year.

- 3 constitutional alerts (2C, 1N)
- 7 respiratory alerts (1SW, 6C)
- Last MIFF report: 8 constitutional alerts (1SE, 3SW, 3C, 1N), 6 respiratory alerts (1SW, 4C, 1N)

**Percentage of Visits for Influenza-like Illness (ILI)
Reported by Sentinel Providers, Statewide and Regions
2015-16 Flu Season**



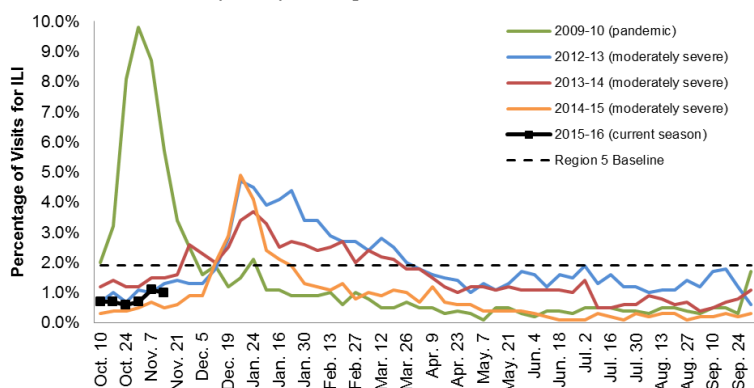
Sentinel Provider Surveillance

The proportion of visits due to influenza-like illness (ILI) decreased to 1.0% overall; this is below the regional baseline (1.9%). A total of 129 patient visits due to ILI were reported out of 12,447 office visits. Please note: These rates may change as additional reports are received.

Number of Reports by Region (31 total):

- C (14)
- N (4)
- SE (9)
- SW (4)

**Percentage of Visits for Influenza-like Illness (ILI) Reported by
the US Outpatient Influenza-like Illness Surveillance Network
(ILINet): Michigan, Select Seasons**



Become a Sentinel Provider!

As part of pandemic influenza surveillance, CDC and MDHHS highly encourage year-round participation from all sentinel providers. New practices are encouraged to join the sentinel surveillance program today! Contact Stefanie Cole (ColeS4@michigan.gov) for more information.

Table of Contents:

Michigan Surveillance.....1-2
National Surveillance.....3
International Surveillance....3
FluBytes3

Hospital Surveillance

The CDC Influenza Hospitalization Surveillance Project provides population-based rates of hospitalization due to severe influenza illness through active surveillance and chart review of lab-confirmed cases beginning on Oct. 1, 2015, for Clinton, Eaton, Genesee, and Ingham counties. Since Oct. 1, there has been 1 pediatric and 1 adult hospitalization reported within the catchment area.

The MDHHS Influenza Sentinel Hospital Network monitors influenza hospitalizations reported voluntarily by hospitals statewide, and 13 hospitals (N, C, SE & SW) reported. Results for the 2015-16 flu season are listed in the table below. Additional hospitals are welcome to join; please contact Seth Eckel at eckels1@michigan.gov.

Age Group	New Flu Hospitalizations Reported	Total 2015-16 Flu Hospitalizations Reported to Date
0-4 years	0	0
5-17 years	0	0
18-49 years	0	1 (SE)
50-64 years	0	1 (SE)
65 years & older	0	1 (SE)
Total	0	3 (SE)

Laboratory Surveillance

MDHHS Bureau of Laboratories reported 2 new positive influenza results: 1 2009 A/H1N1pdm and 1 A/H3. A total of 13 positive influenza results have been reported for the 2015-16 season. Influenza results for the 2015-16 season are in the table below.

Respiratory Virus	# Positive Respiratory Virus Results by Region				Total	# Specimens Antigenically Characterized	# Tested for Antiviral Resistance
	C	N	SE	SW			# Resistant / Total # Tested
2009 A/H1N1pdm	1		4		5	1* (1 A/California/07/2009-like (H1N1)pdm09**)	
Influenza A/H3			6	2	8		

*Specimens antigenically characterized by CDC; **A/California/07/2009-like (H1N1)pdm09 is the H1N1 component of the 2015-16 Northern Hemisphere flu vaccines.

In addition, 11 sentinel clinical labs (3SE,2SW,6C) reported influenza results. Two labs (SE) reported sporadic influenza A activity. No labs reported influenza B activity. Five labs (SE,SW,C) reported sporadic or low Parainfluenza activity. Two labs (SE) reported sporadic RSV activity. Three labs (SE,SW,C) reported sporadic or slightly increasing Adenovirus activity. One lab (SE) reported sporadic hMPV activity. Most testing volumes remain near the moderate range.

Influenza Congregate Settings Outbreaks

There were no new respiratory facility outbreaks reported. There has been a total of 1 respiratory facility outbreak reported to MDHHS for the 2015-16 season. Respiratory facility outbreaks are listed in the table below by facility type and surveillance region.

Facility Type	C	N	SE	SW	Total
K-12 School	0	0	0	1	1
Total	0	0	0	1	1

Influenza-associated Pediatric Mortality

No influenza-associated pediatric deaths have been reported to MDHHS for the 2015-16 season.

National: In the United States, flu activity was low with 1.6% of outpatient visits due to influenza-like illness, which is below the national baseline of 2.1%. One influenza-associated pediatric death has been reported for the 2015-16 flu season. Additional information is in the weekly FluView reports available at: www.cdc.gov/flu/weekly/.

International: Globally, influenza activity generally remained low in both hemispheres. In the Northern Hemisphere, flu activity continued at low, inter-seasonal levels with sporadic detections. Countries in Southern and Southeast Asia reported low flu activity overall except for India, Lao People's Democratic Republic, and Thailand where activity mainly due to A(H1N1)pdm09 continued to be reported. More information is available at: www.who.int/influenza/surveillance_monitoring/updates/latest_update_GIP_surveillance/en/.

FluBytes



INFLUENZA-RELATED JOURNAL ARTICLES

- *Journal of Infectious Diseases:* [Substantial influenza vaccine effectiveness observed in households with children in a season in which A \(pH1N1\) predominated \(2013-14\)](#)
 - Adjusted VE against pH1N1 was 66% with similar estimates in children and adults
 - VE did not appear different for LAIV and IIV among children 2-8 years
 - VE similar for subjects vaccinated in current and prior seasons and those vaccinated in current season only
- *Vaccine:* [Effectiveness of LAIV and IIV in children 2-17 years of age in 2013-14 in the U.S.](#)
 - Postmarketing observational study to evaluate quadrivalent LAIV effectiveness
 - In children 2-17 years, LAIV provided significant protection against B/Yamagata (82%) but not A/H1N1 (13%)
- *Vaccine:* [Assessment of influenza vaccine effectiveness in a sentinel surveillance network, 2010-13, U.S.](#)
 - Researchers found moderate flu VE
 - VE was higher against H1N1 compared to H3N2 and flu B
- *BMJ:* [Nosocomial transmission of avian influenza A\(H7N9\) virus in China: epidemiological investigation](#)
 - Nosocomial transmission possible between 2 patients who shared hospital ward in February 2015

FLU WEBSITES

www.michigan.gov/flu

www.cdc.gov/flu

www.flu.gov

<http://vaccine.healthmap.org/>

UPCOMING FLU WEBINARS – DECEMBER

The National Foundation for Infectious Diseases (NFID) is offering two influenza webinars in December. On December 4, 12-1 PM (ET), an online panel will discuss communicating influenza prevention messages. You can register [here](#). On December 9, 12-1 PM (ET), the webinar is titled, "Influenza Vaccines: Giving the Right Dose at the Right Time." Register for that webinar [here](#).

AVIAN INFLUENZA INTERNATIONAL NEWS

- [Avian influenza outbreaks reported in Africa \(H5N1\), Asia \(H5N6\)](#)
- [H7N9 sickens farmer in China](#)
- [Vietnam reports H5N1, H5N6 outbreaks; Hong Kong finds H5 in songbird](#)

AVIAN INFLUENZA NEWS IN NORTH AMERICA

- Any reports of sick or dead birds should be forwarded immediately to the proper agency:
 - For domestic poultry, contact MDARD:
 - M-F 8AM-5PM, 1-800-292-3939
 - After hours/weekends, 517-373-0440
 - For wildlife (die-off of waterfowl, gulls, or shorebirds), contact DNR:
 - M-F 8AM-5PM, 517-336-5030
 - After hours/weekends, 1-800-292-7800

OTHER INFLUENZA-RELATED NEWS

- CDC: [132.7 million doses of flu vaccine distributed in U.S.](#)
- CDC: [2015 National Influenza Vaccination Week \(NIVW\) Key Points](#)
- [FDA approves first seasonal influenza vaccine containing an adjuvant](#)

Archived editions of FluBytes are available [here](#) and MI FluFocus archives are [here](#).

For questions or to be added to the distribution list, please contact Stefanie Cole at ColeS4@michigan.gov.

MDHHS Contributors

Bureau of Epidemiology – S. Bidol, MPH, S. Cole, RN, MPH, S. Eckel, MPH

Bureau of Labs – B. Robeson, MT, V. Vavricka, MS