



# MI Flu Focus

## Influenza Surveillance Updates Bureaus of Epidemiology and Laboratories



Editor: Stefanie Cole, RN, MPH ColeS4@michigan.gov

December 9, 2015 Vol. 12; No. 39

### Influenza Surveillance Report for the Week Ending November 28, 2015

**MI's Influenza  
Activity Level:**  
Sporadic

**Updates of Interest:**

- National Influenza Vaccination Week was [announced in MMWR](#). Interim flu vaccination coverage estimates for 2015-16 will be released this week.

#### Michigan Disease Surveillance System

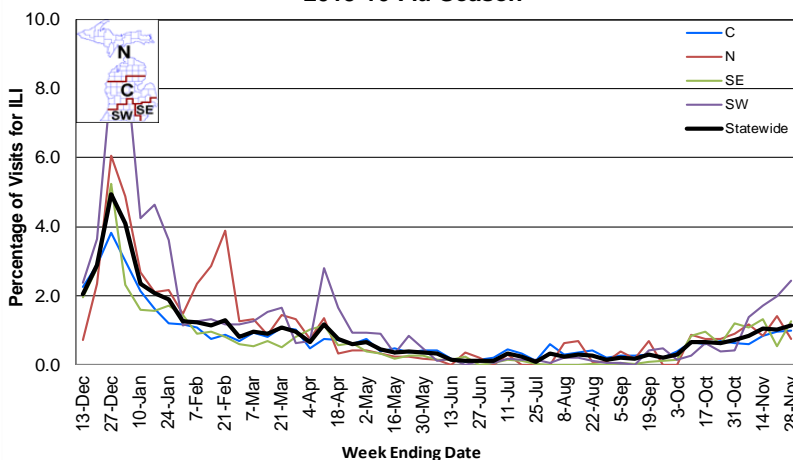
MDSS influenza data indicated that compared to levels from the previous week, aggregate reports had decreased while individual reports were similar. Aggregate and individual reports were both lower than levels seen during the same time period last year.

#### Emergency Department Surveillance

Compared to levels from the week prior, emergency department visits from constitutional complaints had decreased, while those from respiratory complaints had increased. Levels of both constitutional and respiratory complaints were lower than those recorded during the same time period last year.

- 10 constitutional alerts (2SW, 6C, 2N)
- 14 respiratory alerts (4SW, 6C, 4N)
- Last MIFF report: 5 constitutional alerts (2SW, 2C, 1 Statewide), 7 respiratory alerts (3SW, 3C, 1N)

**Percentage of Visits for Influenza-like Illness (ILI) Reported by Sentinel Providers, Statewide and Regions 2015-16 Flu Season**



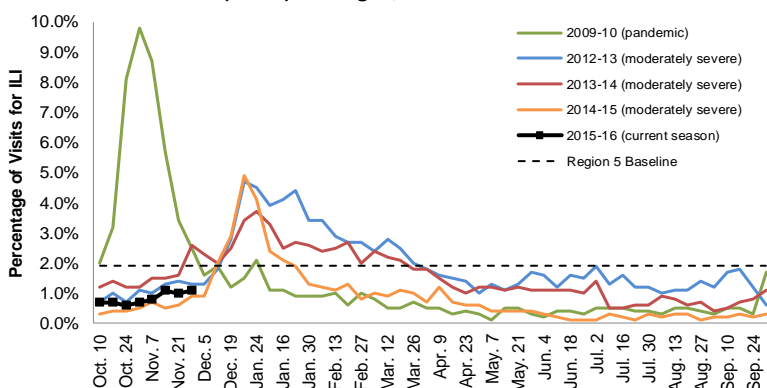
#### Sentinel Provider Surveillance

The proportion of visits due to influenza-like illness (ILI) increased to 1.1% overall; this is below the regional baseline (1.9%). A total of 112 patient visits due to ILI were reported out of 9,832 office visits. Please note: These rates may change as additional reports are received.

Number of Reports by Region (34 total):

- C (15)
- N (4)
- SE (11)
- SW (4)

**Percentage of Visits for Influenza-like Illness (ILI) Reported by the US Outpatient Influenza-like Illness Surveillance Network (ILINet): Michigan, Select Seasons**



#### Become a Sentinel Provider!

As part of pandemic influenza surveillance, CDC and MDHHS highly encourage year-round participation from all sentinel providers. New practices are encouraged to join the sentinel surveillance program today! Contact Stefanie Cole ([ColeS4@michigan.gov](mailto:ColeS4@michigan.gov)) for more information.

#### Table of Contents:

Michigan Surveillance.....1-2  
National Surveillance.....3  
International Surveillance....3  
FluBytes .....3

### Hospital Surveillance

The CDC Influenza Hospitalization Surveillance Project provides population-based rates of hospitalization due to severe influenza illness through active surveillance and chart review of lab-confirmed cases beginning on Oct. 1, 2015, for Clinton, Eaton, Genesee, and Ingham counties. Since Oct. 1, there has been 1 pediatric and 1 adult hospitalization reported within the catchment area.

The MDHHS Influenza Sentinel Hospital Network monitors influenza hospitalizations reported voluntarily by hospitals statewide, and 13 hospitals (N, C, SE & SW) reported. Results for the 2015-16 flu season are listed in the table below. Additional hospitals are welcome to join; please contact Seth Eckel at [eckels1@michigan.gov](mailto:eckels1@michigan.gov).

Age Group	New Flu Hospitalizations Reported	Total 2015-16 Flu Hospitalizations Reported to Date
0-4 years	0	0
5-17 years	0	0
18-49 years	0	1 (SE)
50-64 years	0	1 (SE)
65 years & older	0	1 (SE)
<b>Total</b>	<b>0</b>	<b>3 (SE)</b>

### Laboratory Surveillance

MDHHS Bureau of Laboratories reported 1 new positive influenza result: 1 2009 A/H1N1pdm. A total of 17 positive influenza results have been reported for the 2015-16 season. Influenza results for the 2015-16 season are in the table below.

Respiratory Virus	# Positive Respiratory Virus Results by Region				Total	# Specimens Antigenically Characterized	# Tested for Antiviral Resistance
	C	N	SE	SW			# Resistant / Total # Tested
2009 A/H1N1pdm	1		7		8	1* (1 A/California/07/2009-like (H1N1)pdm09**)	1 / 2
Influenza A/H3			7	2	9		

\*Specimens antigenically characterized by CDC; \*\*A/California/07/2009-like (H1N1)pdm09 is the H1N1 component of the 2015-16 Northern Hemisphere flu vaccines.

In addition, 12 sentinel clinical labs (3SE,2SW,6C,1N) reported influenza results. One lab (SE) reported sporadic influenza A activity. No labs reported influenza B activity. Four labs (SE,SW,C) reported sporadic or slightly increasing Parainfluenza activity. Eight labs (SE,SW,C) reported sporadic or low RSV activity. Three labs (SE,SW) reported sporadic or slightly elevated Adenovirus activity. One lab (SE) reported sporadic hMPV activity. Most testing volumes are in the low to moderate range.

### Influenza Congregate Settings Outbreaks

There were no new respiratory facility outbreaks reported. There has been a total of 1 respiratory facility outbreak reported to MDHHS for the 2015-16 season. Respiratory facility outbreaks are listed in the table below by facility type and surveillance region.

Facility Type	C	N	SE	SW	Total
K-12 School	0	0	0	1	1
<b>Total</b>	<b>0</b>	<b>0</b>	<b>0</b>	<b>1</b>	<b>1</b>

### Influenza-associated Pediatric Mortality

No influenza-associated pediatric deaths have been reported to MDHHS for the 2015-16 season.

**National:** In the United States, flu activity increased slightly but remained low overall with 1.9% of outpatient visits due to influenza-like illness, which is below the national baseline of 2.1%. Three of 10 regions reported ILI at or above region-specific baselines. No influenza-associated pediatric deaths were reported, for a total of 2 pediatric deaths for the 2015-16 flu season. Additional information is in the weekly FluView reports available at: [www.cdc.gov/flu/weekly/](http://www.cdc.gov/flu/weekly/).

**International:** Globally, influenza activity generally remained low in both hemispheres. In temperate South America, respiratory virus activity was generally low with mostly flu B viruses circulating. More information is available at: [www.who.int/influenza/surveillance\\_monitoring/updates/latest\\_update\\_GIP\\_surveillance/en/](http://www.who.int/influenza/surveillance_monitoring/updates/latest_update_GIP_surveillance/en/).

# FluBytes



## INFLUENZA-RELATED JOURNAL ARTICLES

- [H7N9 live attenuated influenza vaccine in healthy adults: a randomized, double-blind, placebo-controlled, phase 1 trial](#)
  - H7N9 LAIV was well tolerated and safe, showed good immunogenicity
- [Safety of live attenuated influenza vaccine in young people with egg allergy: multicenter prospective cohort study](#)
  - Immunized egg-allergic children 2-18 years with LAIV
  - LAIV was associated with low risk of systemic allergic reactions in young people with egg allergy
  - LAIV seemed to be well tolerated in those with well-controlled asthma or recurrent wheeze
- [Immune history profoundly affects broadly protective B cell responses to influenza](#)
  - Data suggest that exposure history is critical in designing universal flu vaccine
- [Influenza vaccination requirements for healthcare personnel in U.S. hospitals: results of a national survey](#)
  - Overall hospital response rate was 69%
  - 43% of non-VA hospitals responded that HCP are required to get flu vaccine annually, compared to 1% of VA hospitals

## AVIAN INFLUENZA INTERNATIONAL NEWS

- [France reports three more bird flu cases in southwest](#)
- [Avian flu strikes poultry in Europe \(H5N1, H5N2\), Africa \(H5N1\), found in Oregon duck \(H5\)](#)
- [H5N8 detected in 3 flocks totaling 70,000 ducks in South Korea](#)
- [H5N2 avian flu confirmed for first time in France](#)

## AVIAN INFLUENZA NEWS IN NORTH AMERICA

- [H5 avian flu found in samples from Oregon duck](#)
- [Researchers react to bird flu outbreak](#)
- Any reports of sick or dead birds should be forwarded immediately to the proper agency:
  - For domestic poultry, contact MDARD:
    - M-F 8AM-5PM, 1-800-292-3939
    - After hours/weekends, 517-373-0440
  - For wildlife (die-off of waterfowl, gulls, or shorebirds), contact DNR:
    - M-F 8AM-5PM, 517-336-5030
    - After hours/weekends, 1-800-292-7800

## OTHER INFLUENZA-RELATED NEWS

- *MMWR*: [Announcement: National Influenza Vaccination Week - December 6-12, 2015](#)
- CDC: [140.5 million doses of flu vaccine distributed in U.S.](#)
- [H1N1 influenza linked to dozens of deaths in Iran](#)
- [Influenza virus research designed to boost vaccine efficiency](#)
- [Rite Aid discounts flu shots in support of National Influenza Vaccination Week](#)
- [App delivers free flu shots to your doorstep](#)
- [New vaccine strategy shields cancer patients from flu better](#)

## FLU WEBSITES

[www.michigan.gov/flu](http://www.michigan.gov/flu)  
[www.cdc.gov/flu](http://www.cdc.gov/flu)  
[www.flu.gov](http://www.flu.gov)  
<http://vaccine.healthmap.org/>

Archived editions of FluBytes are available [here](#) and MI FluFocus archives are [here](#).

For questions or to be added to the distribution list, please contact Stefanie Cole at [ColeS4@michigan.gov](mailto:ColeS4@michigan.gov).

### MDHHS Contributors

Bureau of Epidemiology – S. Bidol, MPH, S. Cole, RN, MPH, S. Eckel, MPH  
Bureau of Labs – B. Robeson, MT, V. Vavricka, MS