

Combined Priority/Focus/Reward Facts and Figures

Building Enrollment (by n students)

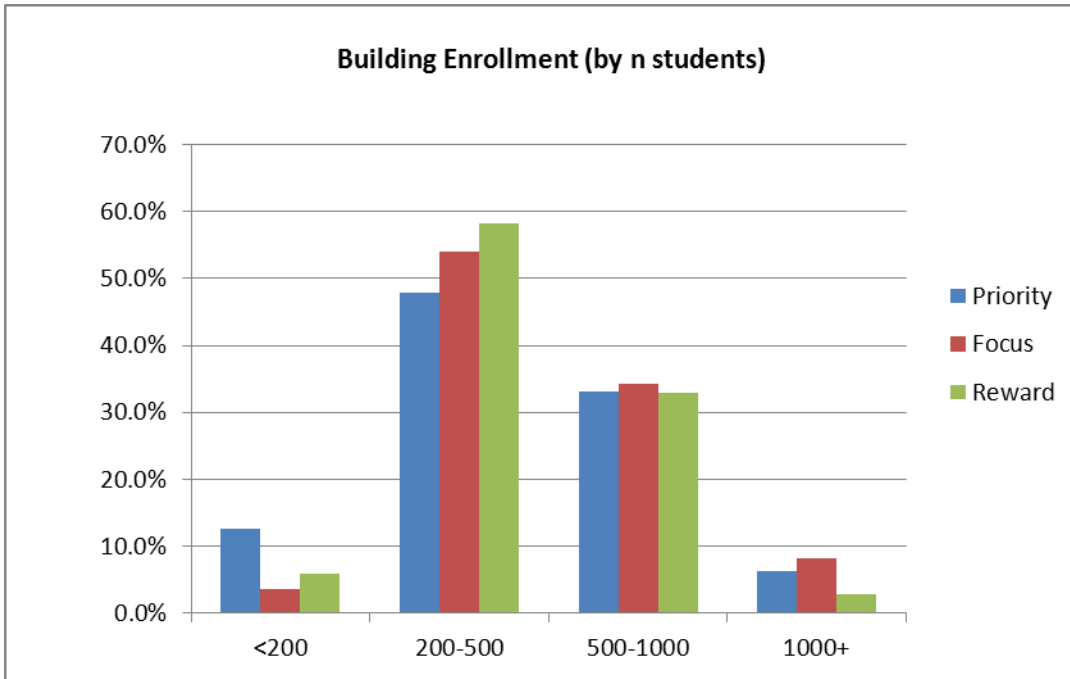
-48% of priority schools have 200-500 students; 13% have fewer than 200 students

-54% of focus schools have 200-500 students; only 4% have fewer than 200 students

-58% of reward schools have 200-500 students

Building Enrollment (by n students)

	<200	200-500	500-1000	1000+
Priority	12.7%	47.9%	33.1%	6.3%
Focus	3.7%	53.9%	34.3%	8.1%
Reward	5.8%	58.3%	33.0%	2.9%



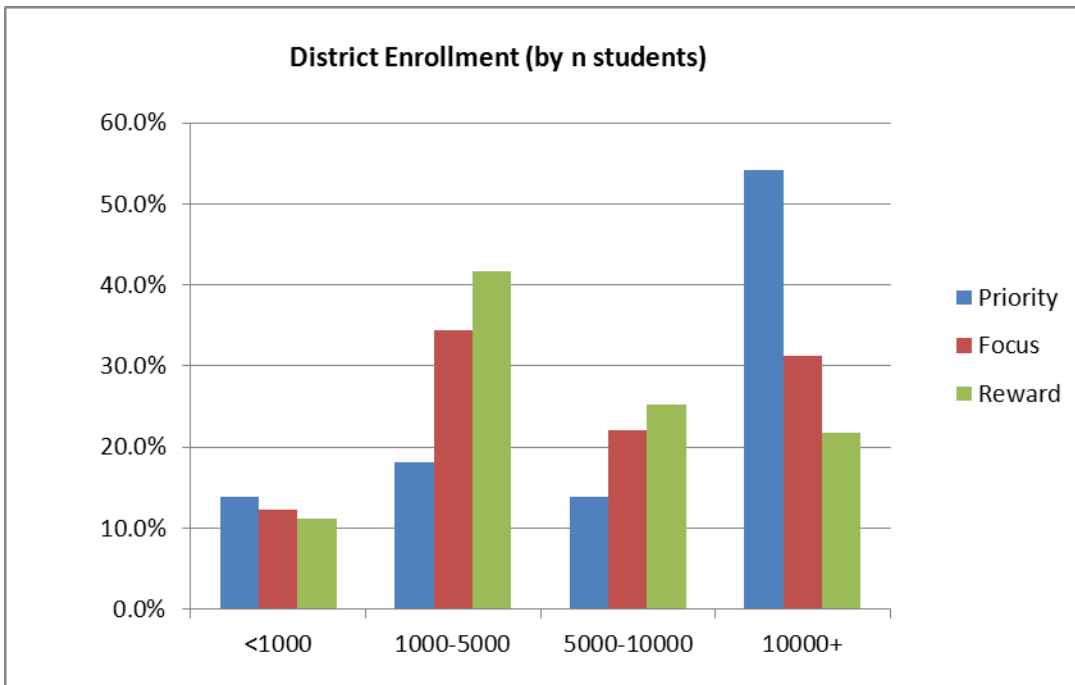
District Enrollment (by n students)

-54% of priority schools are in districts with more than 10,000 students; only 31% of focus schools and 22% of reward schools are in districts with more than 10,000 students

-42% of reward schools are in districts with 1000-5000 students

District Enrollment (by n students)

	<1000	1000-5000	5000-10000	10000+
Priority	13.9%	18.1%	13.9%	54.2%
Focus	12.3%	34.4%	22.1%	31.3%
Reward	11.2%	41.7%	25.2%	21.8%



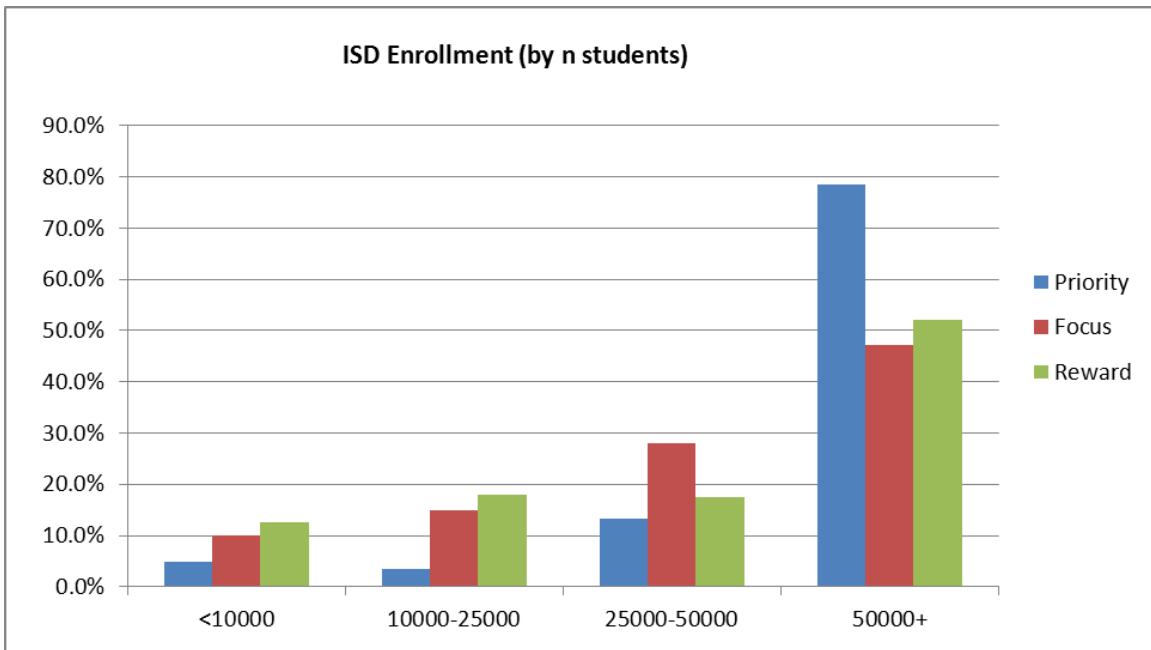
ISD Enrollment (by n students)

-79% of priority schools are in ISDs with more than 50,000 students; only 47% of focus schools and 53% of reward schools are in ISD with more than 50,000 students

-13% of reward schools are in ISDs with fewer than 10,000 students

ISD Enrollment (by n students)

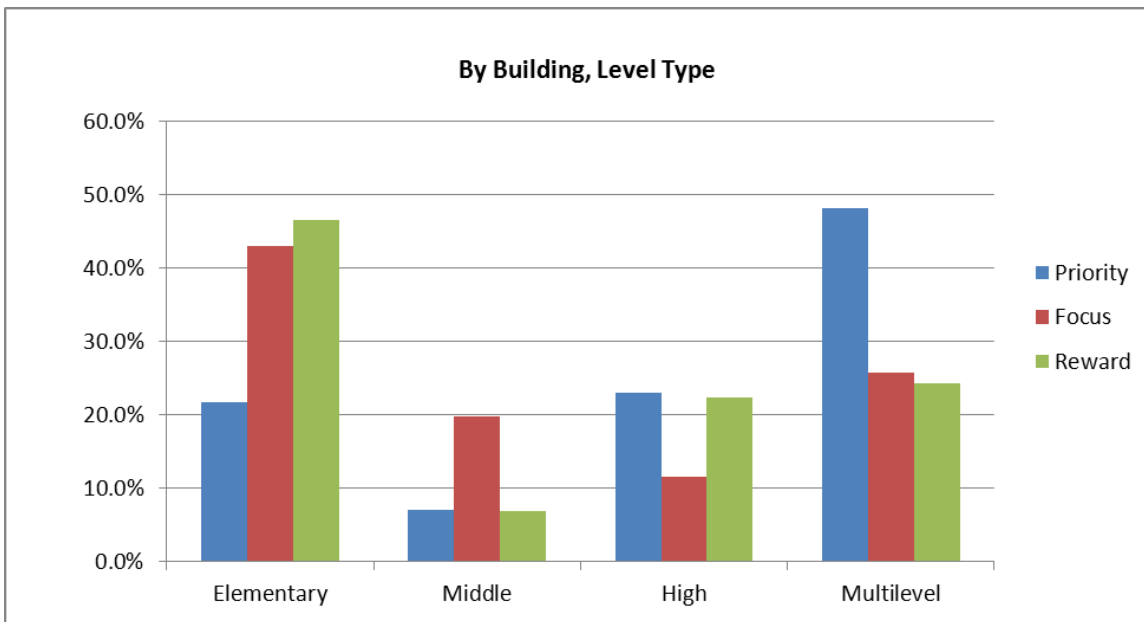
	<10000	10000-25000	25000-50000	50000+
Priority	4.9%	3.5%	13.2%	78.5%
Focus	10.1%	14.8%	27.9%	47.2%
Reward	12.6%	17.9%	17.4%	52.2%



Building Level Type

-48% of priority schools have a multilevel building type; 43% of focus schools and 47% of reward schools have an elementary building level type

Building Level Type	Elementary	Middle	High	Multilevel
Priority	21.7%	7.0%	23.1%	48.3%
Focus	43.0%	19.8%	11.5%	25.7%
Reward	46.6%	6.8%	22.3%	24.3%

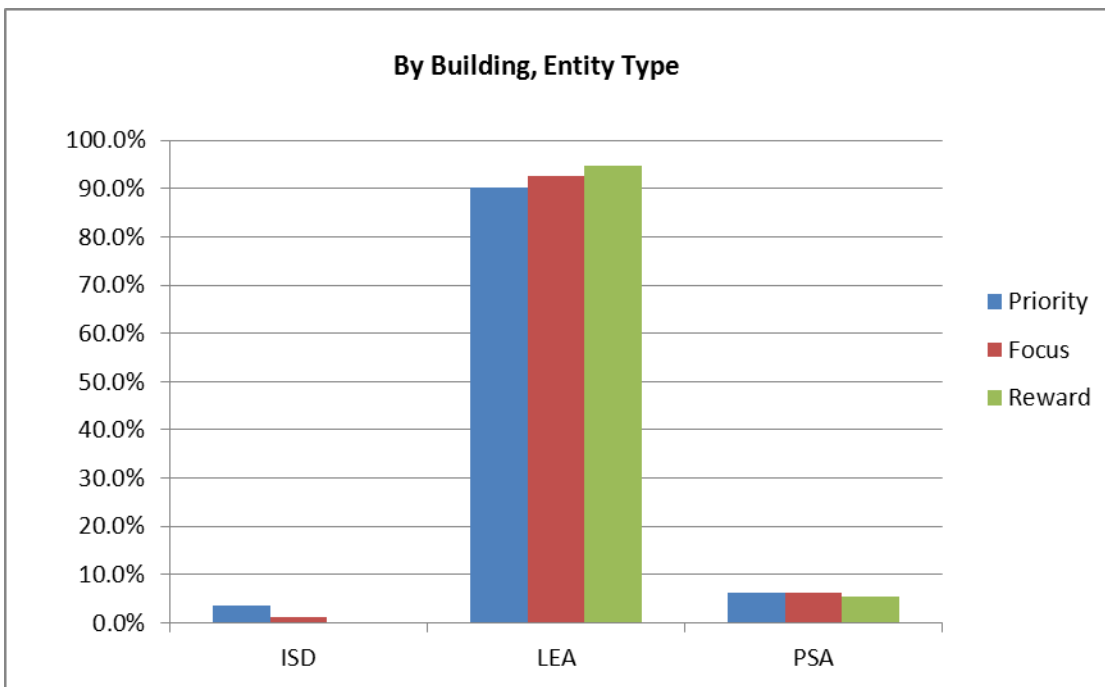


Building Entity Type

-90% of priority schools have an LEA building entity type; 93% of focus schools and 95% of reward schools have an LEA building entity type

Building Entity Type

	ISD	LEA	PSA
Priority	3.5%	90.2%	6.3%
Focus	1.1%	92.7%	6.1%
Reward	0.0%	94.7%	5.3%

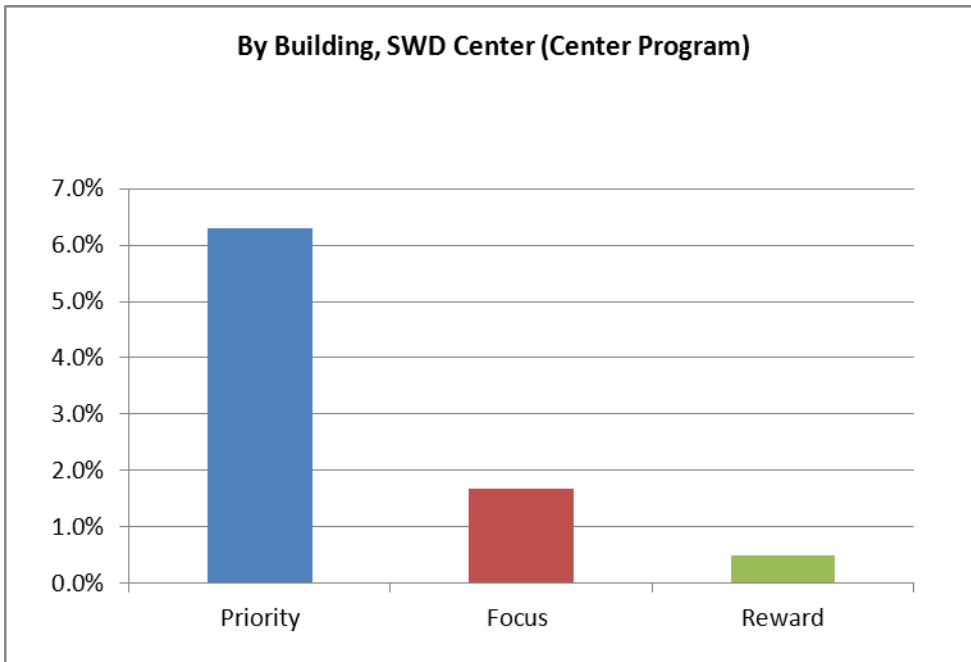


Building SWD Center (center program)

-6% of priority schools are SWD center programs; only 2% of focus schools and 1% of reward schools are SWD center programs

Building SWD Center (center program)

	Yes	No
Priority	6.3%	93.7%
Focus	1.7%	98.3%
Reward	0.5%	99.5%



Building Title 1 Status

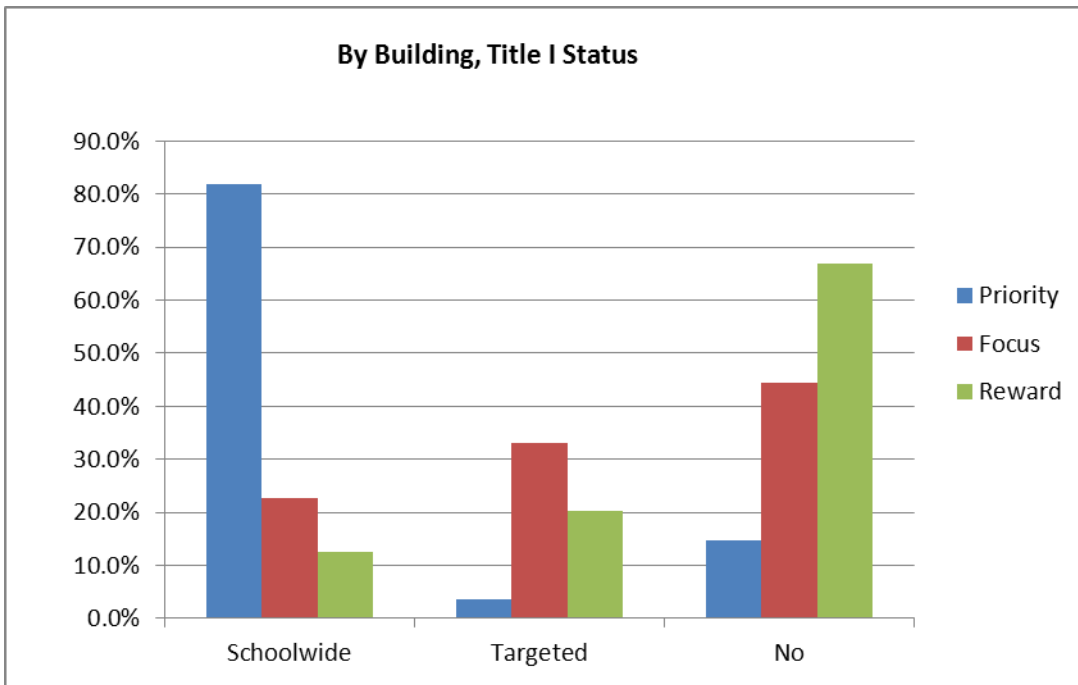
-82% of priority schools have schoolwide Title I status, and only 4% of priority schools have targeted Title I status

-23% of focus schools have schoolwide Title I status and 33% of focus schools have targeted Title I status

-In contrast, only 13% of reward schools have schoolwide Title I status, and only 20% of reward schools have targeted Title I status

Building Title 1 Status

	Schoolwide	Targeted	No
Priority	81.8%	3.5%	14.7%
Focus	22.6%	33.0%	44.4%
Reward	12.6%	20.4%	67.0%



Building % ED

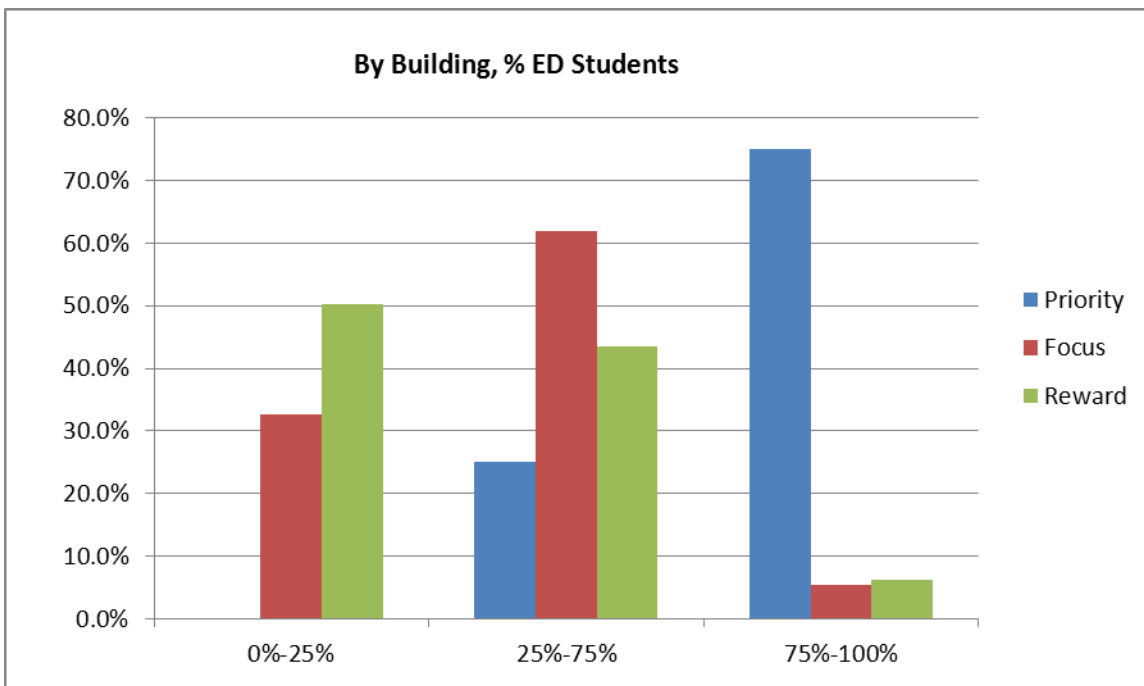
-No priority schools are less than 25% ED by building; 75% of priority schools are more than 75% ED by building

-33% of focus schools are less than 25% ED by building; 62% of focus schools are between 25% and 75% ED by building

-50% of reward schools are less than 25% ED by building; 44% of reward schools are between 25% and 75% ED by building

Building % ED

	0%-25%	25%-75%	75%-100%
Priority	0.0%	25.0%	75.0%
Focus	32.7%	62.0%	5.3%
Reward	50.2%	43.5%	6.3%



Building % Nonwhite

-73% of priority schools are more than 75% nonwhite by building; only 11% of priority schools are less than 25% nonwhite by building

-71% of focus schools are less than 25% nonwhite by building; only 3% of focus schools are more than 75% nonwhite by building

-88% of reward schools are less than 25% nonwhite by building; only 4% of reward schools are more than 75% nonwhite by building

Building % Nonwhite

	0%-25%	25%-75%	75%-100%
Priority	11.1%	16.0%	72.9%
Focus	70.9%	26.5%	2.5%
Reward	88.4%	7.7%	3.9%

