

Combined Priority/Focus/Reward Facts and Figures

Building Enrollment (by n students)

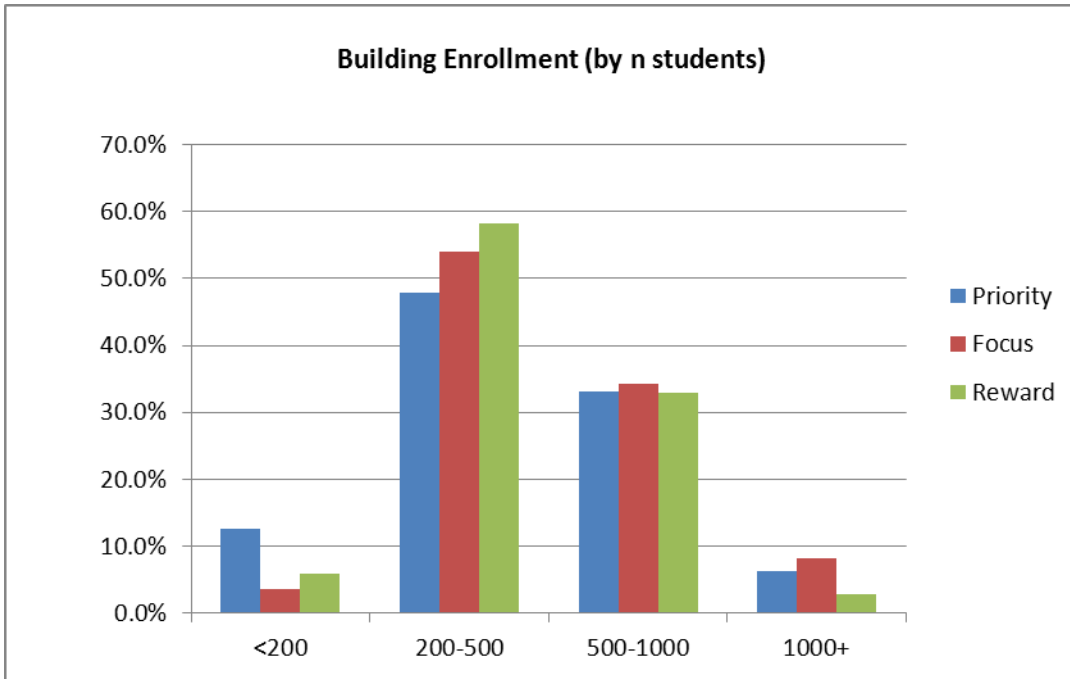
-48% of priority schools have 200-500 students; 13% have fewer than 200 students

-54% of focus schools have 200-500 students; only 4% have fewer than 200 students

-58% of reward schools have 200-500 students

Building Enrollment (by n students)

| | <200 | 200-500 | 500-1000 | 1000+ |
|-----------------|-------|---------|----------|-------|
| Priority | 12.7% | 47.9% | 33.1% | 6.3% |
| Focus | 3.7% | 53.9% | 34.3% | 8.1% |
| Reward | 5.8% | 58.3% | 33.0% | 2.9% |



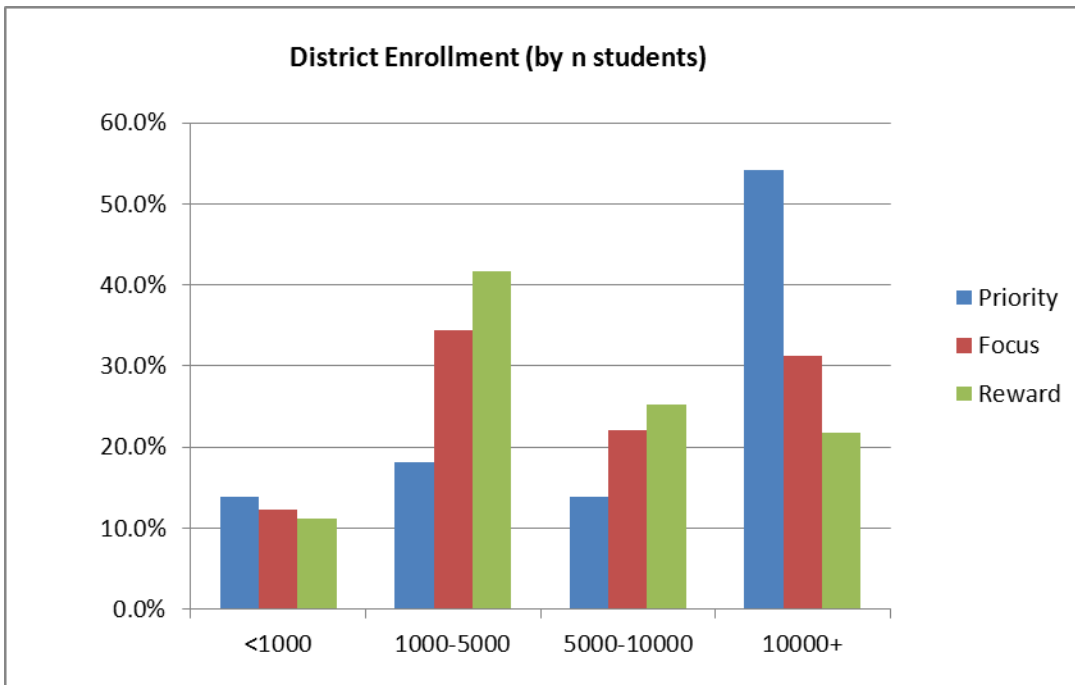
District Enrollment (by n students)

-54% of priority schools are in districts with more than 10,000 students; only 31% of focus schools and 22% of reward schools are in districts with more than 10,000 students

-42% of reward schools are in districts with 1000-5000 students

District Enrollment (by n students)

| | <1000 | 1000-5000 | 5000-10000 | 10000+ |
|-----------------|-------|-----------|------------|--------|
| Priority | 13.9% | 18.1% | 13.9% | 54.2% |
| Focus | 12.3% | 34.4% | 22.1% | 31.3% |
| Reward | 11.2% | 41.7% | 25.2% | 21.8% |



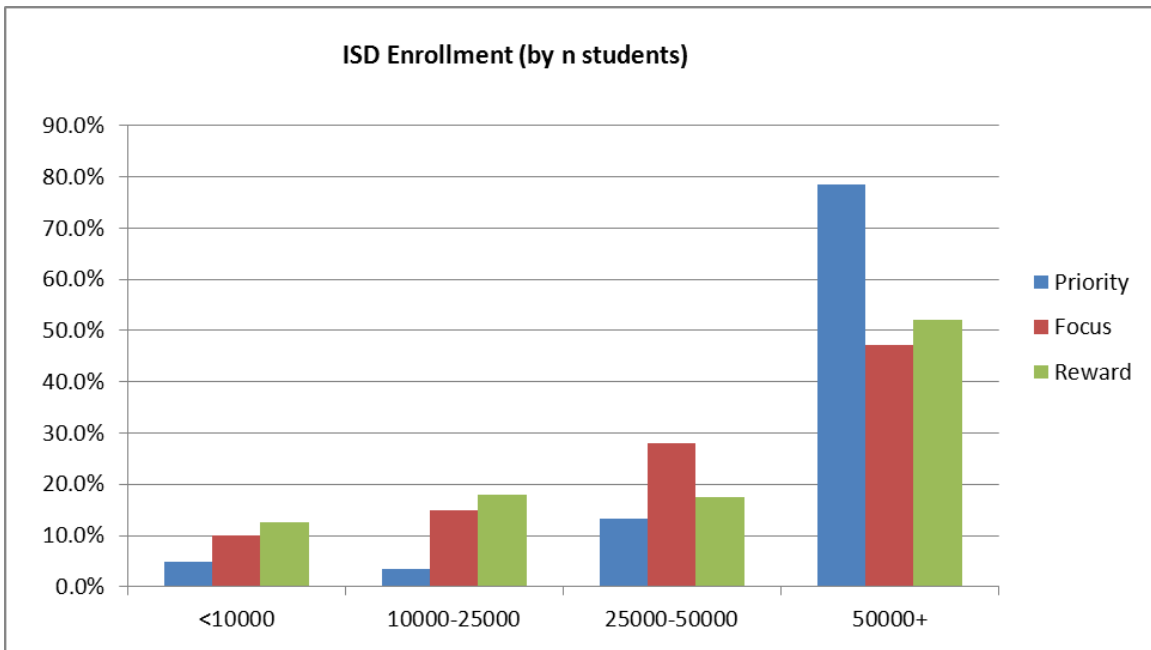
ISD Enrollment (by n students)

-79% of priority schools are in ISDs with more than 50,000 students; only 47% of focus schools and 53% of reward schools are in ISD with more than 50,000 students

-13% of reward schools are in ISDs with fewer than 10,000 students

ISD Enrollment (by n students)

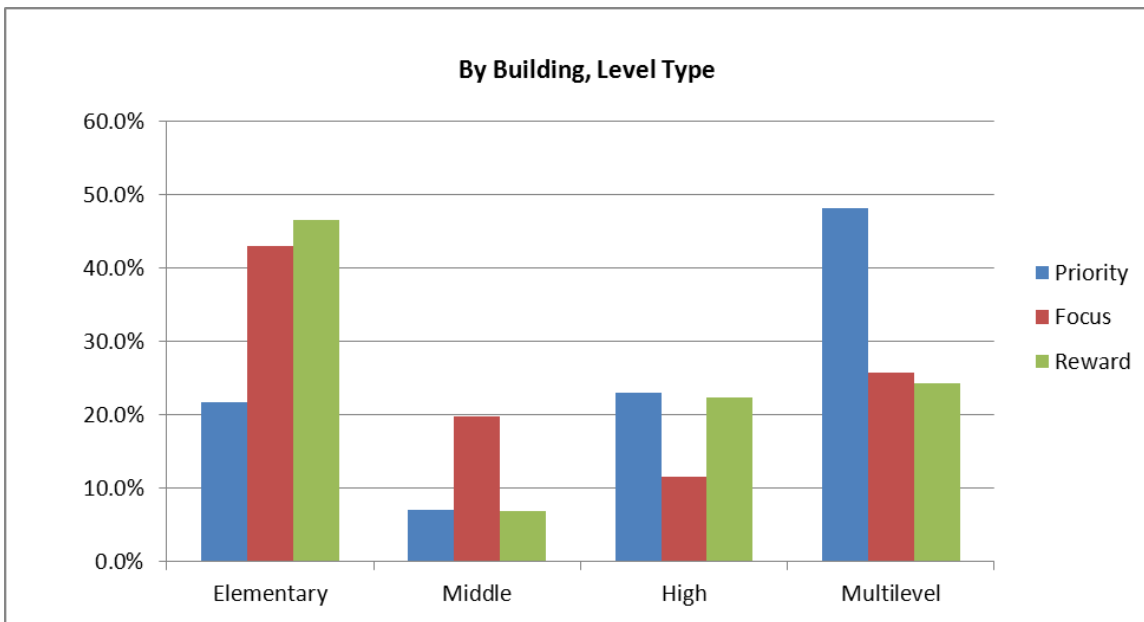
| | <10000 | 10000-25000 | 25000-50000 | 50000+ |
|-----------------|--------|-------------|-------------|--------|
| Priority | 4.9% | 3.5% | 13.2% | 78.5% |
| Focus | 10.1% | 14.8% | 27.9% | 47.2% |
| Reward | 12.6% | 17.9% | 17.4% | 52.2% |



Building Level Type

-48% of priority schools have a multilevel building type; 43% of focus schools and 47% of reward schools have an elementary building level type

| Building Level Type | Elementary | Middle | High | Multilevel |
|---------------------|------------|--------|-------|------------|
| Priority | 21.7% | 7.0% | 23.1% | 48.3% |
| Focus | 43.0% | 19.8% | 11.5% | 25.7% |
| Reward | 46.6% | 6.8% | 22.3% | 24.3% |

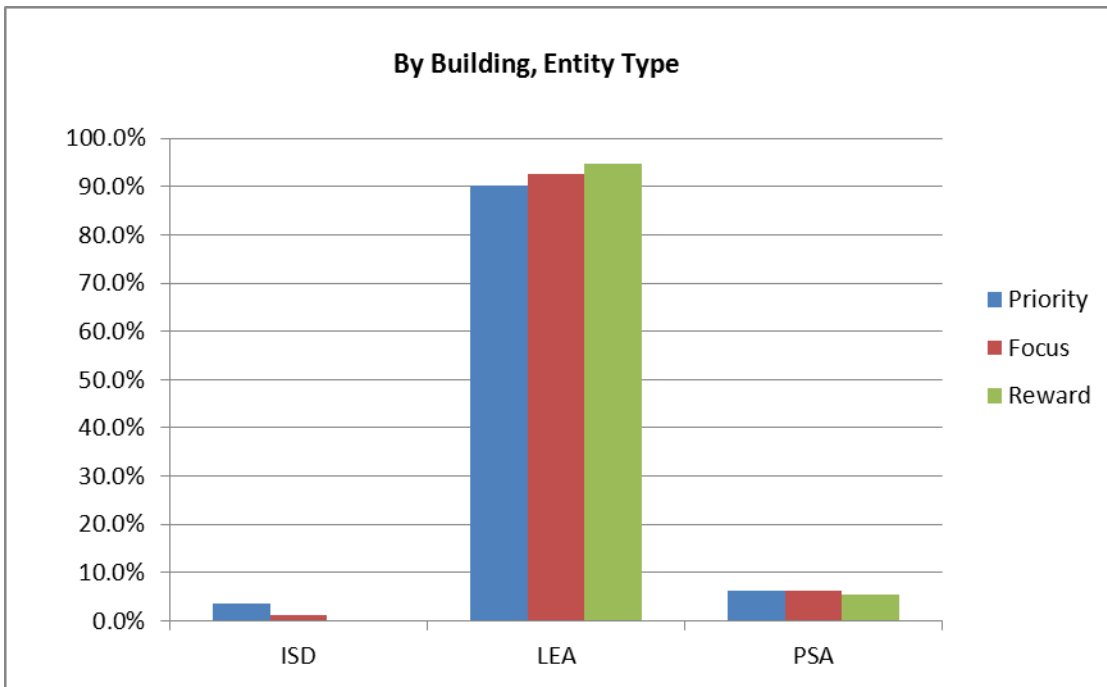


Building Entity Type

-90% of priority schools have an LEA building entity type; 93% of focus schools and 95% of reward schools have an LEA building entity type

Building Entity Type

| | ISD | LEA | PSA |
|-----------------|------|-------|------|
| Priority | 3.5% | 90.2% | 6.3% |
| Focus | 1.1% | 92.7% | 6.1% |
| Reward | 0.0% | 94.7% | 5.3% |

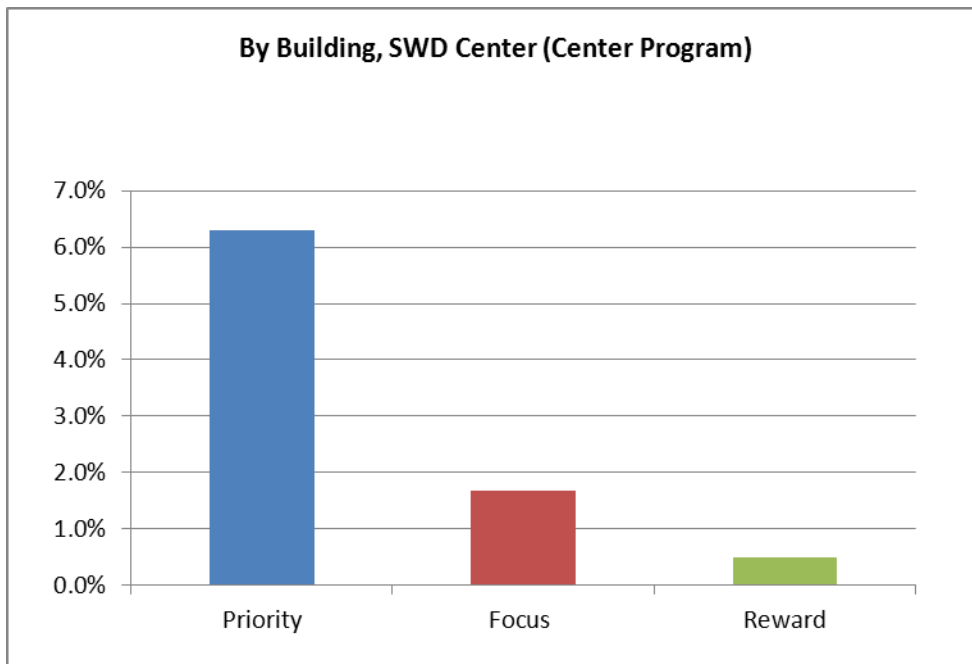


Building SWD Center (center program)

-6% of priority schools are SWD center programs; only 2% of focus schools and 1% of reward schools are SWD center programs

Building SWD Center (center program)

| | Yes | No |
|-----------------|------|-------|
| Priority | 6.3% | 93.7% |
| Focus | 1.7% | 98.3% |
| Reward | 0.5% | 99.5% |



Building Title 1 Status

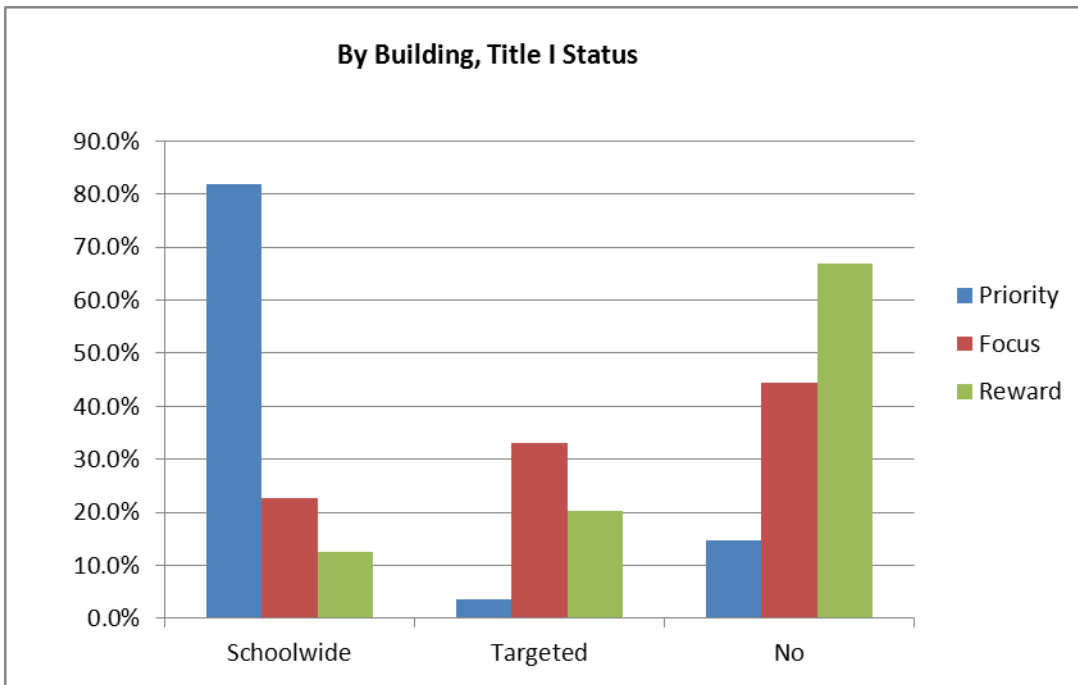
-82% of priority schools have schoolwide Title I status, and only 4% of priority schools have targeted Title I status

-23% of focus schools have schoolwide Title I status and 33% of focus schools have targeted Title I status

-In contrast, only 13% of reward schools have schoolwide Title I status, and only 20% of reward schools have targeted Title I status

Building Title 1 Status

| | Schoolwide | Targeted | No |
|-----------------|------------|----------|-------|
| Priority | 81.8% | 3.5% | 14.7% |
| Focus | 22.6% | 33.0% | 44.4% |
| Reward | 12.6% | 20.4% | 67.0% |



Building % ED

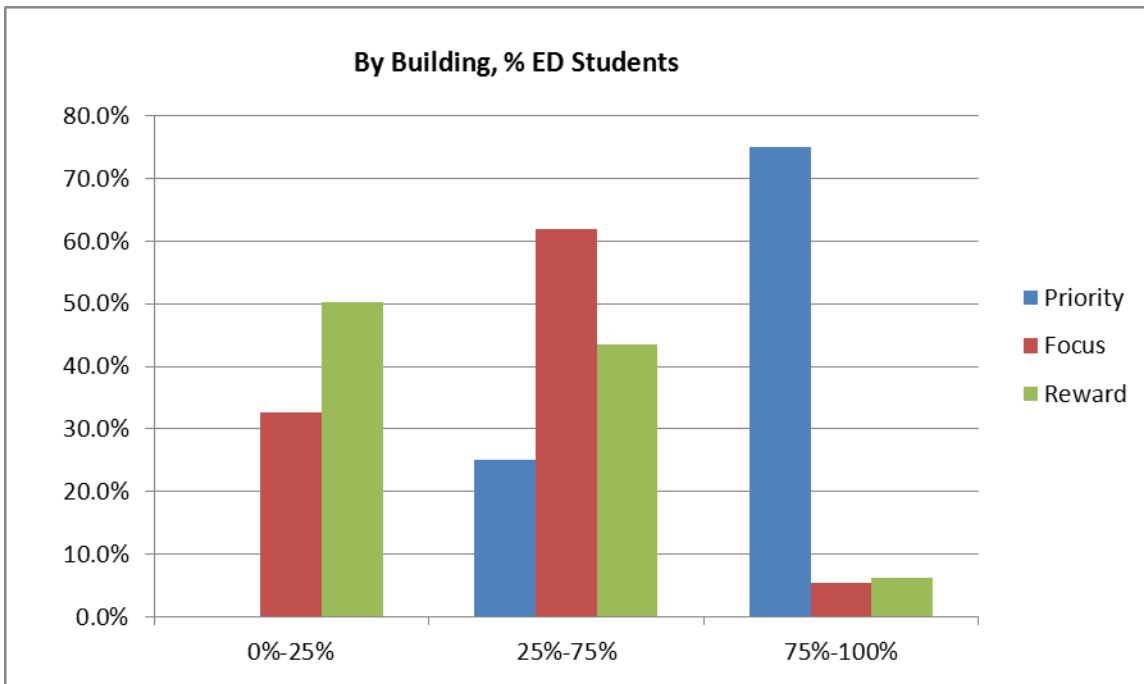
-No priority schools are less than 25% ED by building; 75% of priority schools are more than 75% ED by building

-33% of focus schools are less than 25% ED by building; 62% of focus schools are between 25% and 75% ED by building

-50% of reward schools are less than 25% ED by building; 44% of reward schools are between 25% and 75% ED by building

Building % ED

| | 0%-25% | 25%-75% | 75%-100% |
|-----------------|--------|---------|----------|
| Priority | 0.0% | 25.0% | 75.0% |
| Focus | 32.7% | 62.0% | 5.3% |
| Reward | 50.2% | 43.5% | 6.3% |



Building % Nonwhite

-73% of priority schools are more than 75% nonwhite by building; only 11% of priority schools are less than 25% nonwhite by building

-71% of focus schools are less than 25% nonwhite by building; only 3% of focus schools are more than 75% nonwhite by building

-88% of reward schools are less than 25% nonwhite by building; only 4% of reward schools are more than 75% nonwhite by building

Building % Nonwhite

| | 0%-25% | 25%-75% | 75%-100% |
|-----------------|--------|---------|----------|
| Priority | 11.1% | 16.0% | 72.9% |
| Focus | 70.9% | 26.5% | 2.5% |
| Reward | 88.4% | 7.7% | 3.9% |

