

# 2018

## State Assessment in Michigan

WHAT IT IS, WHAT IT MEANS,  
WHAT IT OFFERS



# Expecting More

- ▶ Getting children ready to take their place in the world is challenging.
- ▶ The knowledge and skills students need for a well-paying job continually evolve to meet current and future workplace demands.



# Expecting More

- ▶ To ensure students can meet these demands, the State Board of Education routinely strengthens Michigan learning standards.
- ▶ State standards broadly outline what students need to know and be able to do in each subject and grade level to be career- and college-ready upon high school graduation.

# Expecting More

- ▶ Standards also serve as a foundation for teachers to develop classroom instruction and lesson plans.
- ▶ Today's standards challenge students to:
  - ✓ Understand subject matter more deeply.
  - ✓ Learn how to think critically.
  - ✓ Apply what they are learning to the real world.
  - ✓ Make learning relevant in their lives.

# What Business and Higher Ed are Saying About High Standards

**High education standards and aligned assessments are critical to the success of all Michigan students**

Business Leaders for Michigan and President's Council, State Universities of Michigan

# What are Michigan Standards?

- ▶ They are learning goals for mathematics, English language arts (ELA), science and social studies.
- ▶ They prepare students for college and careers.
- ▶ They are educator-developed.
- ▶ They will help students compete nationally and globally.
- ▶ They are not a curriculum or federal program.

# How does Michigan measure progress?

Once each spring, all students take a high-quality state assessment.

- ▶ **M-STEP** is given each spring to students in grades 3-8.
- ▶ **PSAT (PreSAT)** is given each spring to students in grades 8, 9, and 10.
- ▶ **Michigan Merit Exam (MME)** comprises a suite of tests for students in grade 11.

# How does Michigan measure progress?

Certain populations of students take assessments uniquely designed for them:

- ▶ **MI-Access** is given each spring to students whose Individualized Education Program (IEP) team has determined that general assessments, even with accommodations, are not appropriate for the student.
- ▶ **WIDA** program of assessments is given each spring to English learners.



# Why State Assessments?

State standardized assessments are required under both state and federal law, to ensure all children are learning and receiving a high-quality education.

State assessments are “summative,” meaning they measure what students are expected to know and be able to do at specific grade levels and in specific content areas.

# Why State Assessments?...cont'd

- ▶ State assessments provide:
  - An important snapshot of student achievement at state, district, and building levels.
  - Valuable information to parents on their child's academic achievement.
  - Important data for teachers, schools, and districts to help guide instruction.

# State Assessment System at a Glance

State Assessments						
Grade	Test Type	Mandate	Test Name	Subjects	Given	Purpose
K-2	Benchmark	Required	Early Literacy and Mathematics Benchmark Assessment or District-selected benchmark <sup>1</sup>	ELA, Mathematics	Fall, Winter, Spring	Within-year progress; program improvement
3	Summative	Required	M-STEP	ELA, Mathematics	Spring	Proficiency; accountability
	Benchmark	Optional	District-selected benchmark assessment <sup>1, 2</sup>		Multiple	Within-year progress; program improvement
4	Summative	Required	M-STEP	ELA, Mathematics	Spring	Proficiency; accountability
	Benchmark	Optional	District-selected benchmark assessment		Multiple	Within-year progress; program improvement
5	Summative	Required	M-STEP	ELA, Mathematics	Spring	Proficiency; accountability
	Summative	Required	M-STEP	Science <sup>4</sup> , Social Studies	Spring	Proficiency; accountability
	Benchmark	Optional	District-selected benchmark assessment	ELA, Mathematics	Multiple	Within-year progress; program improvement
6	Summative	Required	M-STEP	ELA, Mathematics	Spring	Proficiency; accountability
	Benchmark	Optional	District-selected benchmark assessment		Multiple	Within-year progress; program improvement
7	Summative	Required	M-STEP	ELA, Mathematics	Spring	Proficiency; accountability
	Benchmark	Optional	District-selected benchmark assessment		Multiple	Within-year progress; program improvement
8	Summative	Required	PSAT 8/9	ELA, Mathematics	Spring	Proficiency; accountability; college readiness
	Summative	Required	M-STEP	Science <sup>4</sup> , Social Studies	Spring	Proficiency; accountability
	Benchmark	Optional	District-selected benchmark assessment	ELA, Mathematics	Multiple	Within-year progress; program improvement
9	Summative	Required	PSAT 8/9	ELA, Mathematics	Spring	College Readiness
10	Summative	Required	PSAT 10	ELA, Mathematics	Spring	College Readiness
11 <sup>3</sup>		Required	MME: SAT with Essay	ELA, Mathematics	Spring	College Readiness; accountability
	Summative	Required	MME: M-STEP	Science <sup>4</sup> , Social Studies	Spring	Proficiency; accountability
		Required	MME: ACT WorkKeys	Reading, Mathematics	Spring	Career Readiness

# State Assessment System at a Glance

State Assessments for Students with Disabilities						
Grade	Test Type	Mandate	Test Name	Subjects	Given	Purpose
3–8, 11 4, 7, 11 5, 8, 11	Summative	ONE Required (as indicated on IEP)	MI-Access FI SI, and P	ELA, Mathematics Science Social Studies (FI Only)	Spring	Proficiency; accountability

State Assessments for English Learners						
Grade	Test Type	Mandate	Test Name	Subjects	Given	Purpose
K	Screeners	As indicated for newly enrolled students	WIDA ACCESS Placement Test (W-APT)	Listening, Reading, Writing, and Speaking	Time of enrollment	Identify English Learners
1-12	Screeners	As indicated for newly enrolled students	WIDA Screener	Listening, Reading, Writing, and Speaking	Time of enrollment	Identify English Learners
K-12	Summative	Required	ACCESS for ELLs 2.0	Listening, Reading, Writing, and Speaking	Spring	English Language Proficiency; accountability
1-12	Summative	Required (ELs with significant disabilities, as determined by IEP)	WIDA Alternate ACCESS for ELLs	Listening, Reading, Writing, and Speaking	Spring	English Language Proficiency

# M-STEP

The Michigan Student Test of Educational Progress (M-STEP) is the state assessment used to assess student progress on Michigan's standards since 2015.

M-STEP has fewer multiple choice questions than the previous MEAP assessment and more questions that require problem solving and critical thinking skills.

# M-STEP...cont'd

M-STEP is aligned to Michigan's challenging learning standards and is administered each spring to students in grades 3-8.

M-STEP measures skills in English language arts (ELA), mathematics, social studies, and science.

(NOTE: Students in grade 8 take M-STEP for social studies and science only)

# Computer Adaptive Testing

M-STEP assessments in English language arts (ELA) and mathematics use computer adaptive testing (CAT).

CAT tests are customized for each student for a more accurate measurement of what students know.

# The PSAT

## *The PSAT (Pre-SAT) for 8<sup>th</sup>, 9<sup>th</sup> and 10<sup>th</sup> graders*

- ▶ The Michigan Department of Education (MDE) provides the PSAT for students in grades 8, 9, and 10.
- ▶ For students in grade 8, PSAT testing replaces M-STEP tests in ELA and mathematics. (M-STEP science and social studies will continue to be administered in grade 8.)
- ▶ For more information, please contact your local high school.



# Michigan Merit Exam (MME)

*The Michigan Merit Exam (MME) for 11th grade students includes three components:*

- ▶ **M-STEP** assessments in science and social studies.
- ▶ **SAT with Essay** – the nation’s most widely-used college admission test, also measures student knowledge of state standards in English language arts and mathematics.
- ▶ **ACT WorkKeys** work skills measurement.

# Support for Students

- ▶ To prepare students for the College Board's PSAT and the SAT with Essay, Michigan students have free access to the Khan Academy for online test practice.
- ▶ For more information on the PSAT and SAT, please visit: the College Board's Michigan website at: [Michigan College Board web page](#).

# M-STEP Testing Time Reduction

- ▶ Since 2015, the MDE has been making changes that have reduced testing time:
  - Reduced ELA and mathematics testing time for students in grades 3-8 to no more than three hours on average.
  - Adopted the SAT to serve as both a college entrance exam and as the ELA and mathematics assessment for students in grade 11 (**reduced** testing time by up to eight hours).

# Time Students Spend on State Assessments

- ▶ Most students spend between 3-8 hours total each year taking state assessments.
- ▶ State assessments comprise less than ***one percent*** of student instructional time during a school year.
- ▶ All other assessments are determined at the local district or building level.

# When Does My Student Take State Assessments?

# State Testing Schedule

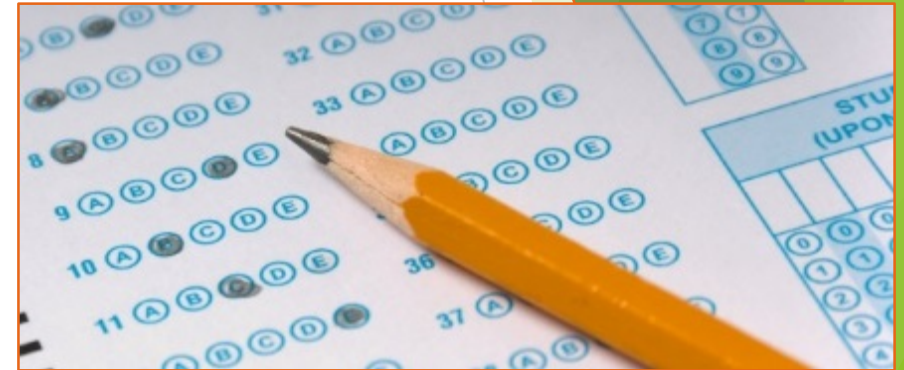
- ▶ To provide districts and schools scheduling flexibility, online M-STEP testing sessions can be scheduled on any instructional day within a 4-week window.
- ▶ Not all students need to be administered the same assessment at the same time, nor on the same day.
- ▶ Test sessions are **not** timed (with the exception of the PSAT, College Entrance, and Work Skills tests). Students are allowed extra time if needed.

# Spring 2019 Online Testing Schedule

Grade Level	Assessment Used and Content Area Assessed	Testing Window
Grades 3, 4, 6, 7	M-STEP Mathematics and ELA	April 29 through May 24
Grades 5	M-STEP Mathematics, ELA, Science, and Social Studies	April 8 through May 3
Grade 8	M-STEP Science Field Test and Social Studies	April 9 through May 3
	PreSAT (PSAT) 8/9	April 9 (initial) April 10-16 and 23-24 (makeup)
Grades 9 and 10	PSAT	April 9, 10, or 11 (initial) April 23 or 24 (makeup)
Grade 11 MME	M-STEP Science Field Test and Social Studies	April 8 through May 3
	SAT	April 9 (initial); April 23 (makeup)
	ACT WorkKeys	April 10 (initial); April 24 (makeup)
<b>MI-Access Alternate Assessment</b> — all grades, all content areas		April 8 through May 24
<b>WIDA</b> for students who are learning the English language		February 4 through March 22

# Paper and Pencil Option

- ▶ In 2018, 98 percent of districts administered the M-STEP online.
- ▶ If a district has determined it has a school that is not yet technology-ready, it may request a waiver from administering the M-STEP online.
- ▶ The paper and pencil test administration is held on designated dates within the online test window.





# Test Results

- ▶ Student performance is described as one of four levels: not proficient, partially proficient, proficient, and advanced.
- ▶ *The M-STEP is a very different state test than those administered prior to the Spring of 2015; therefore results should not be compared to MEAP results through 2014.*

# Test Results...cont'd

- ▶ Schools receive a printed report they give to parents and guardians that describes their student's performance on the subjects tested by M-STEP, PSAT, and MME, which differ by grade.
- ▶ Your student's teacher can explain each of these reports in more detail and describe how your child is doing in each area. They can also discuss what you can do to help your child succeed.

# Questions?

- ▶ Visit the M-STEP web page at [www.michigan.gov/mstep](http://www.michigan.gov/mstep)
- ▶ Visit the MME web page at [www.michigan.gov/mme](http://www.michigan.gov/mme)
- ▶ Contact the MDE Assessment and Accountability Office at [mde-oeaa@michigan.gov](mailto:mde-oeaa@michigan.gov) or 877-560-8378 (toll-free)