

Proven to Work in Michigan

i-Ready offers the value of many programs in one by providing a single platform that reduces complexity, saves time, and helps teachers use data to differentiate instruction.

Built for Michigan Standards



i-Ready Diagnostic is approved by the Michigan Department of Education as a "Return to Learn" benchmark assessment and an initial and extensive "Read by Grade Three" assessment.

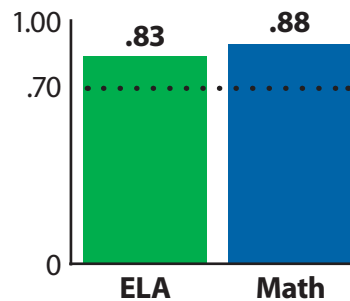
For Michigan schools participating in the Michigan Data Hub, *i-Ready* offers fully functioning Diagnostic outcome interoperability with Ed-Fi, so *i-Ready* data can easily connect with student information from other educational systems.

Backed by Research

Research conducted in partnership with the Educational Research Institute of America, using a large sample, found the *i-Ready Diagnostic* is highly correlated with the Michigan Student Test of Educational Progress (M-STEP) 3–8 assessment in the areas of English Language Arts (ELA) and Mathematics.

Data from the 2016–2017 *i-Ready* and M-STEP Linking Study

Average Overall Correlations for the Spring *i-Ready Diagnostic* and the 2017 M-STEP



Assessment correlations above .70 are considered strong evidence by the NCII.

In a study of more than 20,000 students' M-STEP test results, ***i-Ready* consistently exceeds the .70 benchmark.**

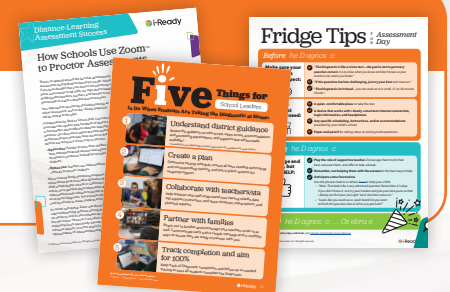
Recognized by the NCII



i-Ready Diagnostic received high ratings from the National Center on Intensive Intervention (NCII) for Academic Screening and Academic Progress Monitoring, signifying its validity and reliability as an assessment that meets high psychometric standards.

Teaching and Learning in 2020

As Michigan teachers, students, and families navigate this unique school year, we are here to help. We have general supports for [testing and teaching](#) in 2020 as well as specific information and tips for [assessing at home](#).

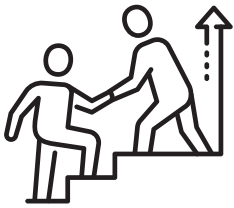


Equity and Accessibility

Curriculum Associates fundamentally believes that all students deserve access to high-quality, equitable educational resources. As such, we strive to ensure that all learners, regardless of disability, cultural identity, economic status or circumstance, and linguistic background can engage with and see themselves reflected in our materials. Learn more about [our approach to equity in learning](#).

As part of our commitment to access and equity, Curriculum Associates is dedicated to creating products that are fair and accessible to the widest population of students. For detailed information about *i-Ready's* wide range of accessibility features, contact your [Michigan-based consultants](#).


Supporting English Learners



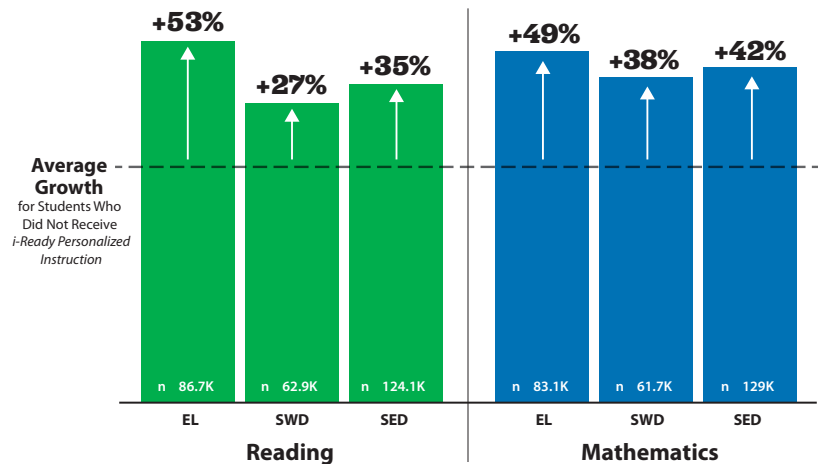
From the start, we design our product suite with English Learners (ELs) in mind. Our rigorous grade-level content is informed by research-based best practices and an asset-based philosophy that recognizes the strengths ELs bring to the classroom. Our instruction is designed with these three key principles in mind: Promote Engagement and Access, Integrate Strategic Scaffolds, and Support Academic Language Development. [Learn more.](#)

Accelerating Growth for Key Groups

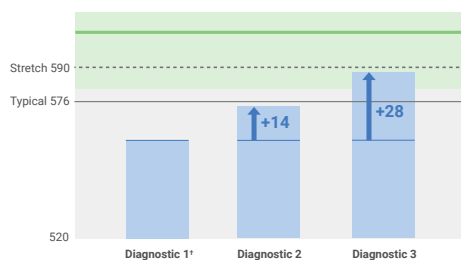
Students who are ELs, students with disabilities (SWD), and students with socioeconomic disadvantages (SED) receiving *i-Ready Personalized Instruction* all saw statistically significantly greater growth than students from the same subgroups who did not have access to the program during the 2017–2018 school year.

-  *i-Ready Personalized Instruction* users with an average of 45 minutes or more per week
- EL** = English Learners
- SWD** = Students with Disabilities
- SED** = Students with Socioeconomic Disadvantages

Score Gains for Key Student Groups Receiving *i-Ready Personalized Instruction* Relative to Key Student Groups Not Receiving *i-Ready Personalized Instruction*



Growth and Proficiency



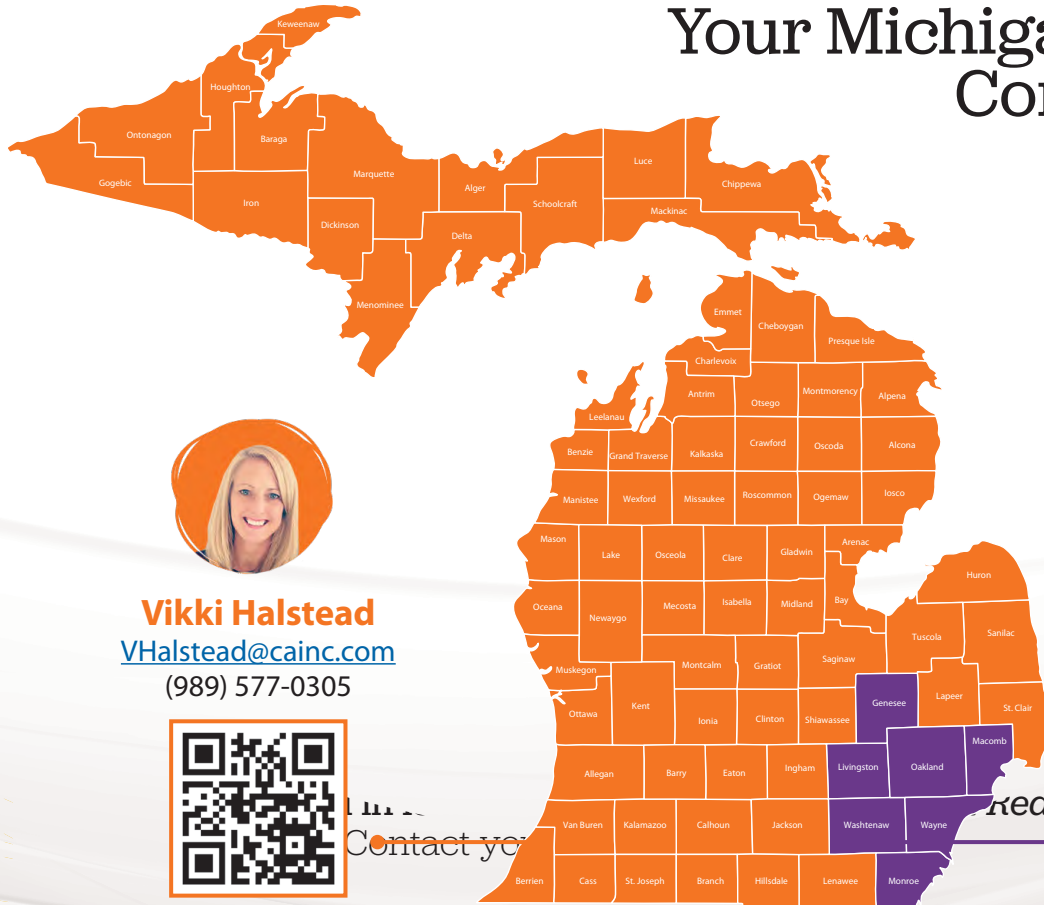
We measure not only growth—but also proficiency: where a child is with respect to grade-level expectations, using criterion and normative measures.

Take the *i-Ready* Tour!

To learn how *i-Ready's* actionable data and instructional resources support Michigan teachers and students (including information about prerequisite and growth monitoring reports), visit i-Ready.com/Tour.



Your Michigan-Based Consultants



Vikki Halstead
VHalstead@cainc.com
(989) 577-0305



Jeff Tompkins
JTompkins@cainc.com
(313) 316-0141

