

Michigan Career and Technical Education Facts 2020-2021

Our Vision: Michigan's CTE system will provide learners with access to equitable, high-quality secondary and postsecondary CTE programs aligned to rigorous academic and technical standards, and career ready practices.



102,988

students were enrolled in **2,093** secondary Career and Technical Education (CTE) programs.



1,461

students were enrolled in **183** CTE Early Middle College (EMC) programs.

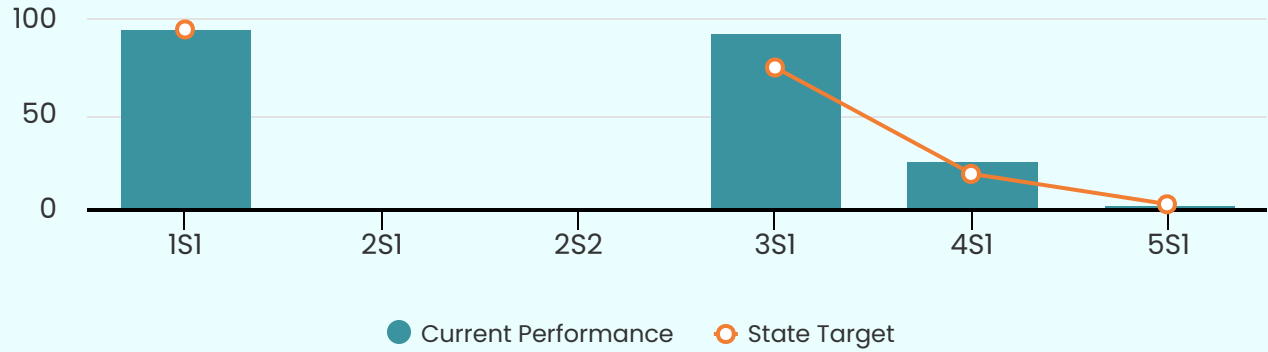


117,797

students participated in Michigan postsecondary institutions in **454** CTE programs.

Michigan CTE Achievement 2020-2021

2020-21 Michigan CTE Secondary Core Performance Indicators



1S1: Four-Year Graduation Rate 2S1: Academic Proficiency in Reading/Language Arts
 2S2: Academic Proficiency in Mathematics 3S1: Post-program Placement Rate
 4S1: Nontraditional Concentration 5S1: Postsecondary Credential Attainment

*2S1 & 2S2 were waived due to COVID-19 lack of data.

More detailed information about Perkins V Core Performance Indicators data can be found here:

<http://analytics.cteis.com/Perkins-CPIs-Race-and-Gender/Perkins-V-Race-and-Gender-CPI>

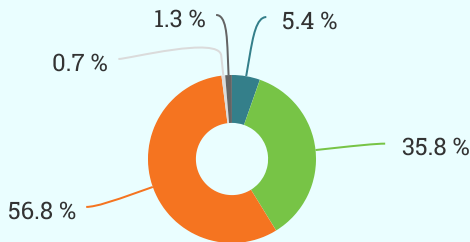


2020-2021 Follow-up of 2019-20 CTE Concentrators

A statewide survey to track CTE students' placement in the 2nd quarter after they exit high school

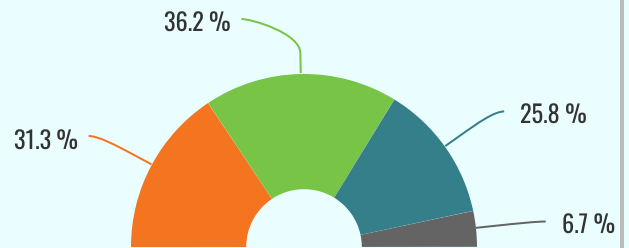
32,540

CTE concentrators responded to the follow-up survey (response rate 87.0%). Total placement rate was **93.4%**



Enrollment in Postsecondary Education N=21,965

● Business/Trade/Career Center ● Community College
● College/University ● Military ● Other



Education and Employment Status N=32,540

● BOTH Continuing Education and Employed
● Continuing Education but NOT Employed
● Employed but NOT Continuing Education
● NOT Continuing Education or NOT Employed

70.5%

of CTE concentrators surveyed reported that they were using the skills learned in their CTE programs for continuing education or in their current job.

Michigan CTE Achievement 2020-2021

Credentials of Value



2,680

CTE students attained pre-approved recognized postsecondary credentials.

“Recognized postsecondary credentials” for Perkins V reporting are identified through a rigorous process implemented by collaborative consortia of secondary and postsecondary Perkins eligible recipients and employers.

https://www.michigan.gov/documents/mde/2021-006_Credential_Update_for_Perkins_V_Reporting_724705_7.pdf

435 CTE students attained postsecondary awards certificates or degrees.

23,770 CTE students attained any other types of credentials.

95.8%



Four-year graduation rate for students who are CTE concentrators.

Compared to Michigan's statewide four-year graduation rate of **82.1%**

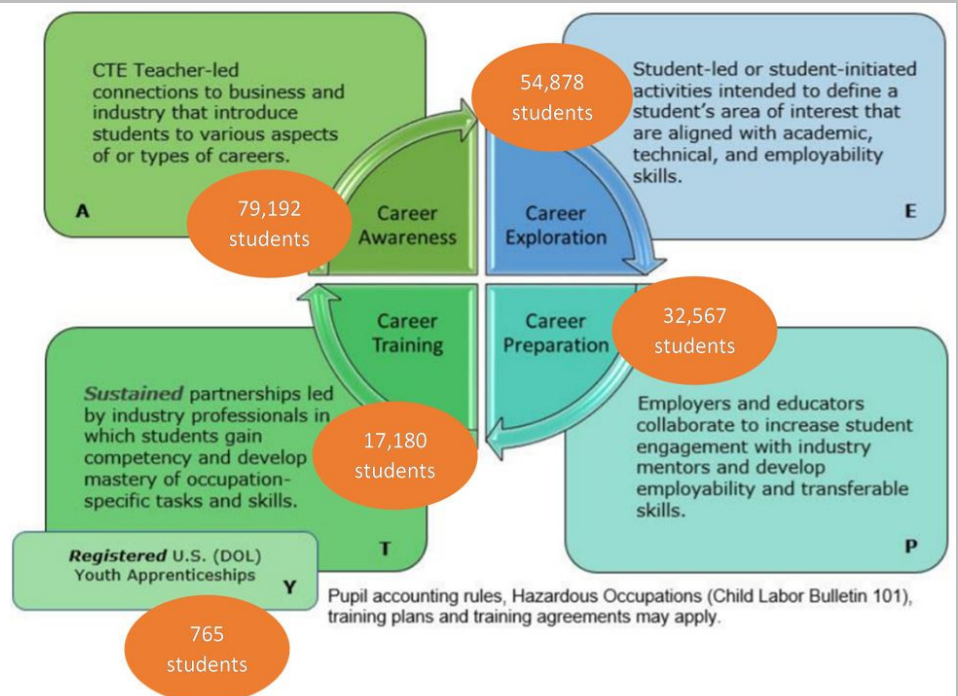


1,985

secondary CTE instructors facilitated learning for Michigan high school students.

Work Based Learning (WBL) in Michigan

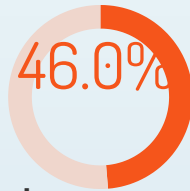
Totally **97,176** students had any WBL experience in CTE programs during 2020-21 school year.



Michigan CTE Special Population Students 2020-2021

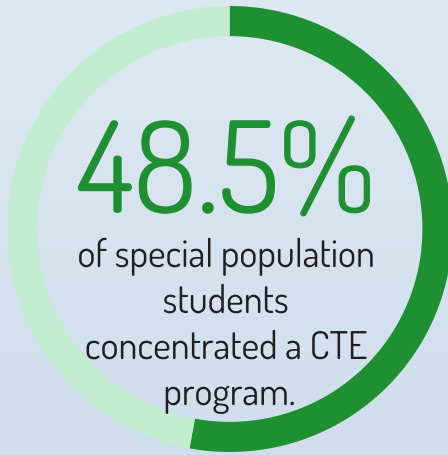
47,402

special populations students were enrolled in a CTE program (46.0% of all CTE students).



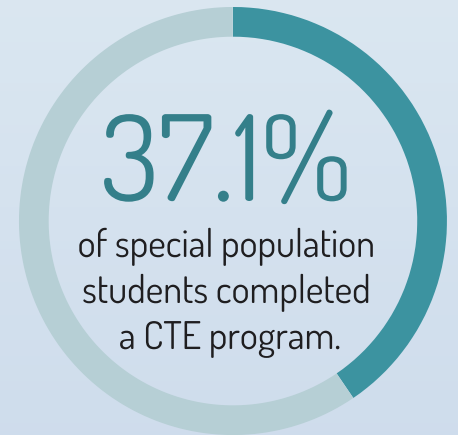
48.5%

of special population students concentrated a CTE program.



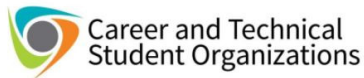
37.1%

of special population students completed a CTE program.



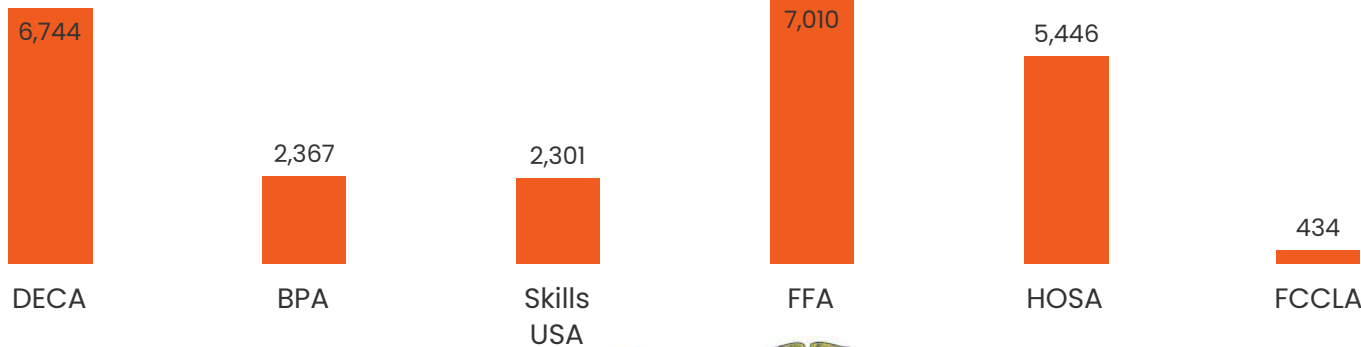
Special Population Category	Enrollment (Duplicated Count)	Concentrator (Duplicated Count)	Completer (Duplicated Count)
Economically Disadvantaged	41,217	19,815	15,156
Students with Disabilities	11,157	4,866	3,591
English Learner	4,323	1,929	1,501
Single Parent	153	82	72
Displaced Homemaker	<10	<10	<10
Migrant	40	22	17
Non-traditional	19,125	10,222	7,816

More About Michigan CTE Students 2020-2021



24,302

students are members of a Career and Technical Student Organization (CTSO)



CTE Breaking Traditions Awards



What are CTE Breaking Traditions Awards?

The Breaking Traditions Awards are an annual award ceremony used to honor and recognize students who have been successful in completing a CTE program that is nontraditional for their gender. The term nontraditional is directly related to Perkins legislation and is defined as a CTE program in which less than 25% of the workforce in that area is comprised of that gender. For example, Welding is nontraditional for females as less than 25% of the workforce in welding is female.



What are the goals of the Breaking Traditions Awards?

The goals of the Breaking Traditions Awards are to promote nontraditional students, recruit students to programs, and assist schools in achieving their core performance indicator for nontraditional concentration. The students who receive this reward are seen as mentors in their schools.

78 students earned 2021 Breaking Traditions Awards:
2 Excellence Awards, **25** Merit Awards, **51** Recognition Awards

Michigan Secondary Career and Technical Education Enrollment 2020-2021

Career Clusters	Number of Programs	Enrollment (Unduplicated)	Concentrators (Unduplicated)	Completers (Unduplicated)
Agriculture, Food & Natural Resources	124	8,624	4,428	2,817
Architecture & Construction	175	7,891	4,852	3,626
Arts, Audio/Video Technology & Communications	111	6,429	3,809	3,201
Business, Management & Administration	185	11,946	5,759	4,512
Education & Training	58	2,230	1,418	1,215
Finance	181	6,108	3,192	2,691
Government & Public Administration	7	773	278	197
Health Science	142	11,731	9,512	8,108
Hospitality & Tourism	87	5,429	2,964	2,085
Human Services	31	1,068	703	459
Information Technology	263	10,293	5,785	4,536
Law, Public Safety, Corrections & Security	51	2,248	1,680	1,430
Manufacturing	179	6,623	4,092	3,009
Marketing, Sales & Service	179	15,289	8,456	6,912
Science, Technology, Engineering & Mathematics	162	6,562	3,725	2,990
Transportation, Distribution & Logistics	174	7,719	3,617	2,533
Energy	4	110	95	95



54.5%

of CTE students concentrated in a CTE program.

A concentrator is a student who has successfully completed more than two courses in a CTE program.



42.9%

of CTE students completed in a CTE program.

A completer is a student who has successfully completed all standards in a CTE program.



Michigan CTE Early Middle College Enrollment 2010-2021

Career Clusters	Number of Programs	Enrollment	Concentrators	Completers
Agriculture, Food & Natural Resources	4	13	11	11
Architecture & Construction	10	23	16	15
Arts, A/V Technology & Communication	5	32	24	18
Business, Management & Administration	8	68	53	42
Education & Training	7	24	24	24
Finance	6	26	22	20
Health Science	22	395	381	327
Hospitality & Tourism	4	15	13	9
Information Technology	32	231	212	194
Law, Public Safety & Security	6	46	36	28
Manufacturing	32	224	195	154
Marketing, Sales and Service	14	66	58	53
Science, Technology, Engineering & Mathematics	20	263	213	159
Transportation, Distribution & Logistics	13	35	24	18



87.7%

of CTE EMC students concentrated in a CTE program.



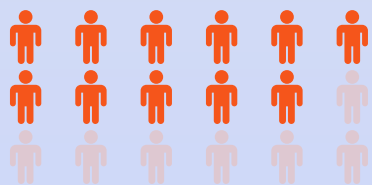
73.4%



of CTE EMC students completed in a CTE program.

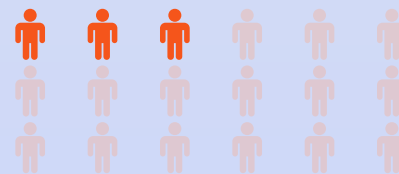
Michigan Postsecondary Career and Technical Education Enrollment 2020-2021

Career Cluster	Number of Programs	Postsecondary Concentrators	Awards Conferred	Exiters
Agriculture, Food & Natural Resources	25	546	122	291
Architecture & Construction	24	3037	684	2208
Arts, Audio/Video Technology & Communications	51	2549	508	1666
Business Management & Administration	43	12898	2428	6885
Education & Training	37	1145	410	672
Finance	8	2463	430	1284
Government & Public Administration	5	18	0	0
Health Science	60	19815	5024	9507
Hospitality & Tourism	8	1099	347	741
Human Services	32	2882	532	1591
Information Technology	25	5153	770	2269
Law, Public Safety, Corrections & Security	23	5220	1137	2901
Manufacturing	44	5670	1509	3748
Marketing	9	841	152	449
Science, Technology, Engineering & Mathematics	41	1266	246	545
Transportation, Distribution & Logistics	19	1580	390	1022



56.2%

of students concentrated in a postsecondary CTE program.



12.5%

of students have awards conferred in a postsecondary CTE program.