



Multi-Tiered Systems of Supports (MTSS)

Multi-Tiered Systems of Supports (MTSS) is a framework designed to meet the individual strengths and needs of learners by connecting education, health, and human service systems and supporting learner, school, center, and community outcomes by helping organize resources to support educators.

MTSS Essential Components

Team-Based Leadership

District, building, and educator collaboration supports success of the child.

Comprehensive Screening and Assessment System

Uses best practices to screen, assess, diagnose, and monitor student progress.

Selection and Implementation of Instruction, Interventions, and Support

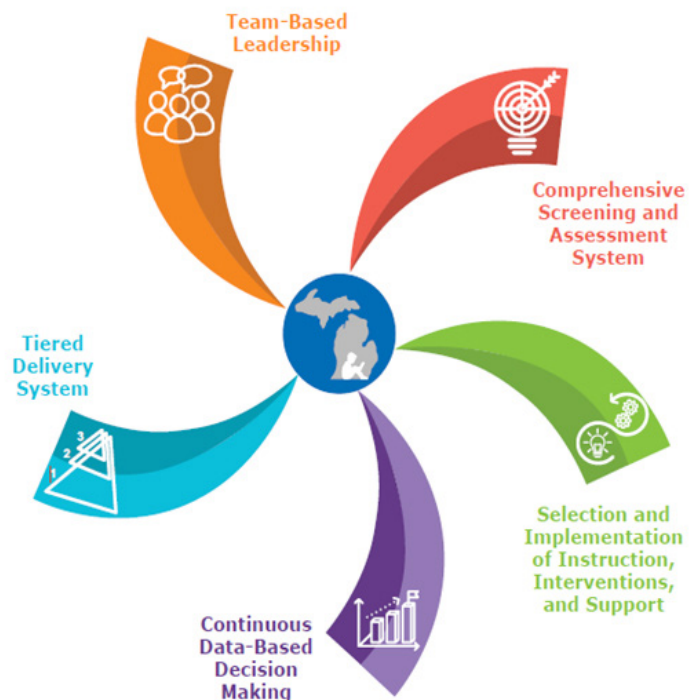
Considers whole child and district's beliefs and activities.

Continuous Data-Based Decision Making

Provides information for decision making for the system and the child.

Tiered Delivery System

Meets the need of the whole child (cognitive, physical, social, emotional, behavioral) within a school district.



November 2019



MTSS Key Ideas

- Model (framework) for supporting ALL learners.
- Uses data to solve problems through educational and behavioral teaching and supports.
- Provides additional supports to meet needs of individual learners.
- Way of thinking and problem solving and not a program, strategy, or trend.
- Centers on needs and performance of ALL learners in buildings and districts.

Layering MTSS Tiers of Support

Tier 1

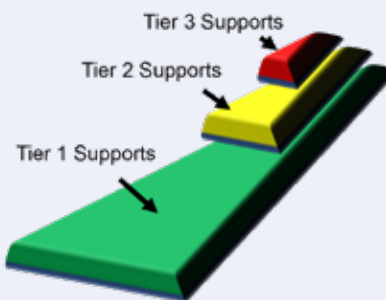
High quality teaching and behavior support for all learners (called universal supports).

Tier 2

Supports (additional to Tier 1) for some learners with more specific skill or behavior needs; may be provided in small group support. These short-term interventions focus on remediating problems.

Tier 3

Individualized supports for students with intensive needs. Tier 3 supports involve more comprehensive assessments to determine factors that contribute to the student's difficulty. Tier 3 is layered on the previous tiers of support.



MTSS Involves

- Screening all learners.
- Increasing levels of support for struggling learners.
- Including all school staff working as a team, evaluating learner needs.
- Training school staff to use interventions and supports.
- Involving and educating families to support their child.
- Monitoring progress of learners to see if interventions are working and change them if needed.

Resources

For more information:

[Michigan Department of Education](#)

Search MTSS (professionals and families)

[Understood.org](#)

Search MTSS

Michigan Alliance for Families
information, support, and education

[Michigan Alliance for Families](#)