

SENDING SCORES BACK PROGRAM

2024-2025 SCHOOL YEAR

WHAT IS THE “SENDING SCORES BACK” PROGRAM?

- Created to attribute student assessment scores and graduation rates to a school in a student’s resident district that the student would otherwise attend if they were not participating in a shared school or program for certain educational settings.
- Created for “good deed” schools and programs that serve students from multiple districts through cooperative agreements.
- Redirects how school accountability is distributed per MCL 388.1704b.

“GOOD DEED” SCHOOL/PROGRAM TYPES

- Alternative Education
- Early/Middle College
- Gifted & Talented
- Special Education

PERSPECTIVES DISTRICTS HAVE FOR THESE SCHOOLS/PROGRAMS

- Districts releasing students to attend specialized programs want high-performing scores to count back with their district's resident/local high school.
- Districts running programs that take challenging students from other districts want to send those scores back to a school in their district of residence.

THE SOLUTION

- In order to send non-resident students' scores back, MDE has to know exactly what students participate in these shared schools or programs and whom should be “sent back.”
- MDE and CEPI created two mechanisms for these “good deed” schools and programs serving multiple districts:
 - SEEs: “Shared Educational Entities”
 - S2E2s: “Shared Specialized Educational Entities”
- SEEs and S2E2s enable MDE to identify shared schools or classroom programs for the purpose of “sending scores back” in school accountability reporting.

WHAT DO SEES/S2E2S DO?

- A SEE is way to identify students to be “sent back” at the building-level.
 - All students reported as enrolled in a SEE school will be sent back.
- A S2E2 is a way to more selectively identify individual students that should be sent back to their residents.
 - In cases where there are classroom programs embedded in a general education school where not all of the students attending the school are a part of the special classroom program, the S2E2 is used at the student-level to identify program participants to ensure their scores are sent back.
 - When a student is submitted with an S2E2 code, they will be considered a “shared student” and later “sent back” for accountability reporting.

SEES

VS.

S2E2S


- Is a standalone school
- Has a building code
- Students are enrolled in MSDS using this building code
- ALL students attending this school should be “sent back” to their resident building pupil would otherwise attend

- Is NOT a school itself
- Is an “umbrella” describing all of the individual classroom programs that take place in traditional schools scattered around the consortium/ISD.
- “Umbrella” has entity code in EEM however students do not enroll in this school code.
- Code used in “S2E2 Code” field of MSDS to indicate student participates in a classroom program under this umbrella and should be sent back to resident building pupil would otherwise attend

SEES

- “Shared Educational Entity”
- A separate school entirely that “stands alone” and does not serve a mix of SEE and non-SEE students– all students in this building will be sent back.
- SEE students enroll in the SEE building with the SEE building code
- SEE students test at the SEE building using materials of the SEE building
- SEE building is SAT test center if 11th/12th graders are served

SEES: CONCEPTUALLY



Sparty
Developmental
School

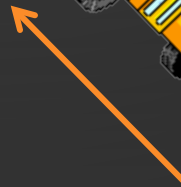
in
Sparty School
District



East Lansing School
District Special Ed.
Students



Sparty School District
Special Ed. Students



Lansing School District
Special Ed. Students

SEES: CONCEPTUALLY

School A

“Sparty Developmental School”

*****Entire population of SEE building are students with disabilities*****

School C

“Sparty Middle School”

School B

“Sparty Elem. School”

School D

“Sparty High School”

These are all of the schools in Sparty School District from example.

S2E2S: A SPECIAL KIND OF SEE

- “Specialized Shared Educational Entity”
- An ISD or consortium classroom program structure where students are served in multiple classrooms scattered among member districts within a consortium or ISD.
- One code per ISD or consortium; can use class/group codes or research codes to differentiate students by program for assessment results
- S2E2 students test in the school building in which they are educated using materials from that school.
- Students reported as enrolled in the actual school they are attending in the MSDS
- Student records in MSDS have “S2E2 Code” field filled in with the S2E2 code for the umbrella of classroom programs

S2E2S: CONCEPTUALLY

“Go Green, Go White S2E2”
a cooperative program of
Spartan Intermediate
School District



Mild CI Classroom in East Lansing School District's High School



Severe CI Classroom in Waverly School District's Middle School



SWD Classroom in Sparty School District's Elementary School



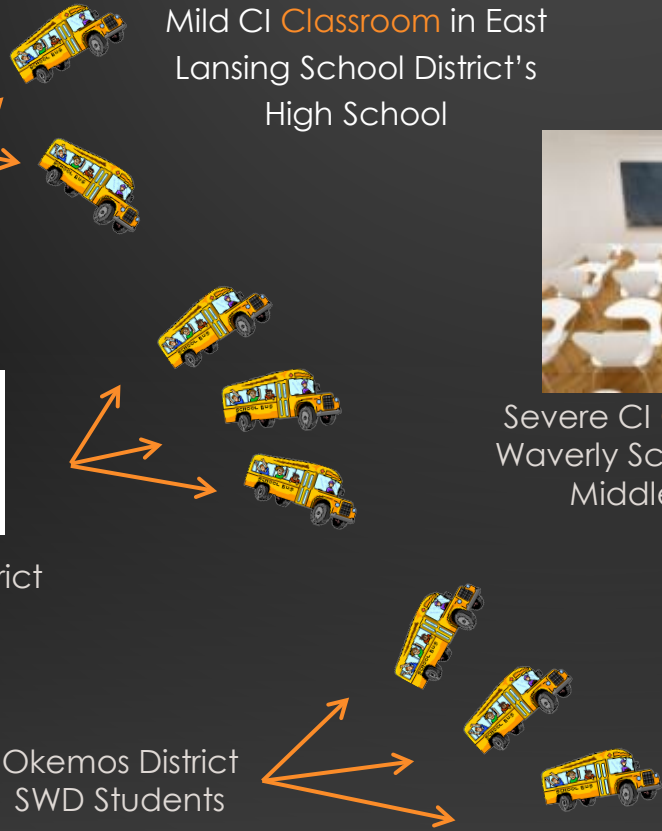
Lansing District SWD Students



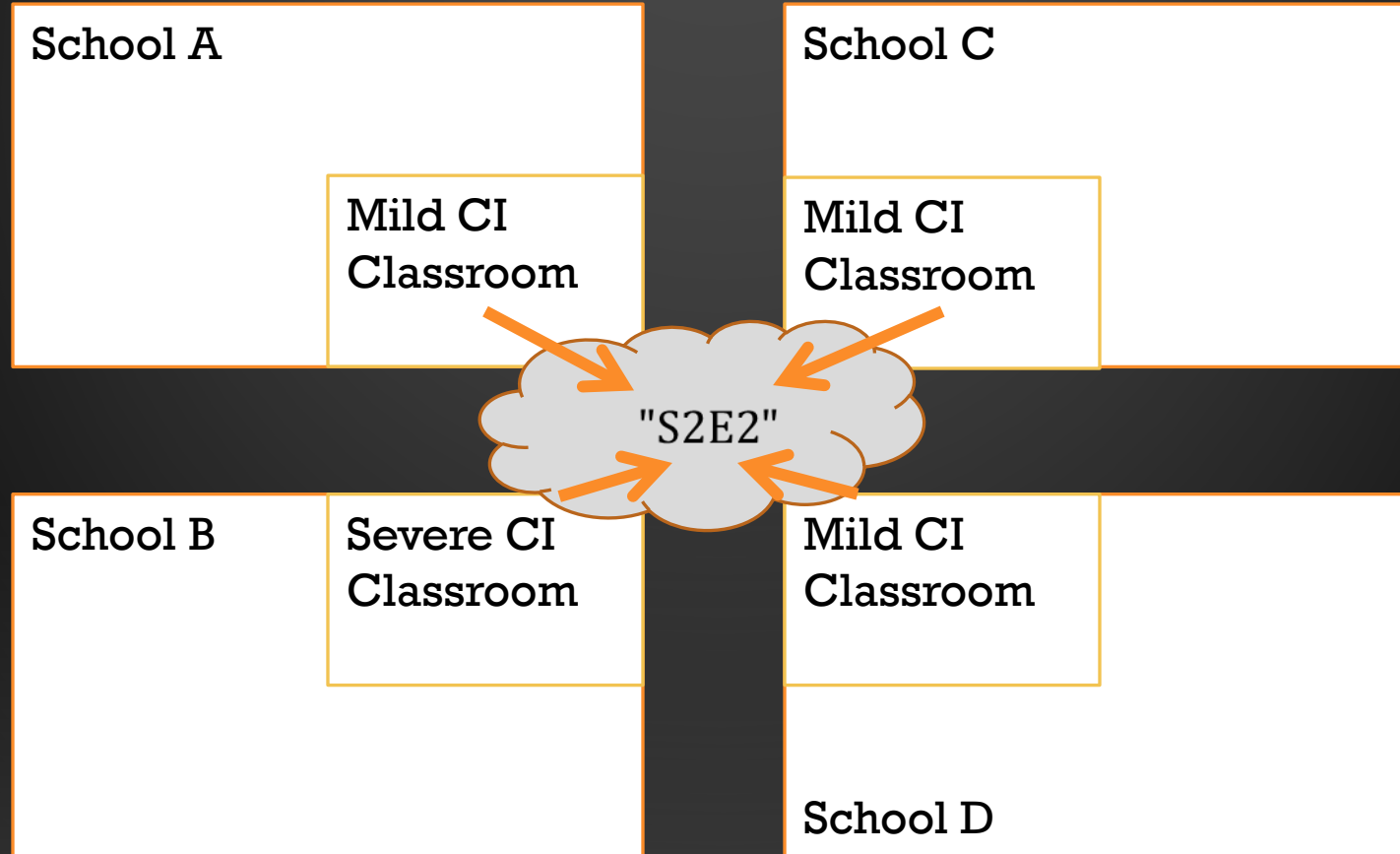
East Lansing District SWD Students



Okemos District SWD Students

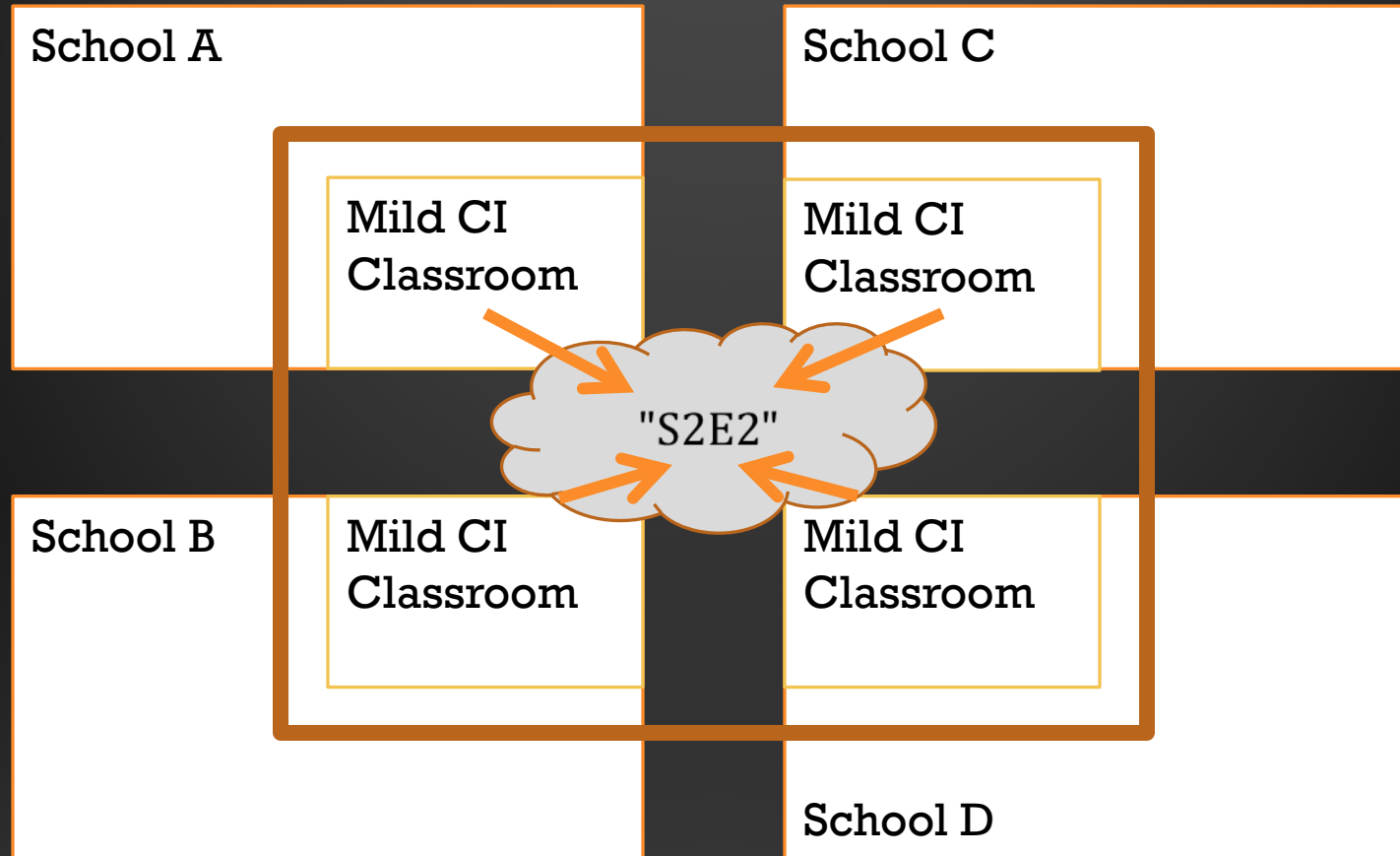


S2E2S: CONCEPTUALLY



Classrooms exist in multiple buildings/districts.

S2E2S: CONCEPTUALLY



These classrooms makeup the S2E2!

HELPFUL DEFINITIONS

- **Parent district:** districts that the SEE/S2E2 is established under
- **Member district:** district that is part of the cooperative agreement but is not the parent district
- **Operating district:** district responsible for the SEE/S2E2 student's education (receives \$ and usually, the accountability)
- **Resident district:** district in which the student lives
- **“Building Pupil Would Otherwise Attend”:** a non-attended school in the resident district that a student attending a SEE or S2E2 would otherwise be enrolled in if they were not attending a SEE or an S2E2 classroom program

SEES & S2E2S: ELIGIBILITY

- Only schools and programs that accept students from 2 or more districts are eligible to participate in the Sending Scores Back program (and not through Schools of Choice)
- Parent district(s) and member districts must have a signed cooperative agreement outlining assessment, accountability, and funding practices

SEES & S2E2S: ELIGIBILITY

- Public School Academies (PSAs) are NOT eligible to become a SEE.
- Students attending a SEE or an S2E2 classroom program through a cooperative agreement from a PSA school not eligible to be sent back.
 - Instead, students would be attributed to a school within the operating district.
- Students attending a SEE or an S2E2 classroom program through schools of choice are not eligible to be sent back.
 - Instead, students would be attributed to a school within the operating district.

SEES & S2E2S IN MSDS

Function	SEE	S2E2
MSDS Submission	Operating district submitted	Students submitted by school district where student's classroom is located (operating district of student's classroom)
"School Facility Number"	EEM entity code of SEE school	EEM entity code of school where student's classroom is located
PEPE (Primary Education Providing Entity)	PEPE District: Operating district PEPE School: SEE school	PEPE District and School: Operating school and operating district housing the student's classroom program
"S2E2Code"	S2E2Code NOT Reported	Students submitted with MSDS field "S2E2Code" populated with S2E2 entity code **This field tells us a student is a S2E2 student**
"Building Pupil Would Otherwise Attend" (Non-attended school student would otherwise attend)	EEM entity code of school in student's Resident District that will be attributed accountability scores for school index calculation purposes.	

TESTING IN SEES & S2E2S

Function	SEE	S2E2
Pre-ID	Pre-ID students at SEE school	Pre-ID students in school where student's classroom is located
ALL Testing	Test students at SEE school	Pre-ID students in school where student's classroom is located
SAT Test Center	SEE school must be approved SAT Test Center for 11 th /12 th graders	School building where student's classroom is located must be approved SAT Test Center for 11 th /12 th graders ***S2E2 itself cannot register to be an SAT Test Center***
Verification of Enrollment, Answer Documents, and Not Tested Students on Secure Site	Handled by SEE school for ALL students– not just resident students!	Handled by schools where student's classroom is located. Done for ALL students– not just resident students!

ASSESSMENT REPORTING FOR SEES AND S2E2S

Student Assessment	SEE	S2E2
Raw Assessment Results	SEE school receives student scores included in aggregate files & reports	School where student's classroom is located receives student scores in aggregate files and reports
Adjusted Assessment Results in School Index Calculations	Non-attended school receives students scores included in aggregate files & reports.	Non-attended school receives students scores included in aggregate files & reports.

GRADUATION RATE REPORTING FOR SEES & S2E2S

Student Assessment	SEE	S2E2
Public Graduation Rate Results	SEE school receives student scores included in aggregate files & reports	School where student's classroom is located receives student scores in aggregate files and reports
Adjusted Graduation Results in School Index Calculations	Non-attended school receives students scores included in aggregate files & reports.	Non-attended school receives students scores included in aggregate files & reports.

Note: Graduation rates used in accountability reporting are always lagged a year due to the extended collection and audit windows for MSDS records impacting rate calculations.

ACCOUNTABILITY REPORTING FOR SEES AND S2E2S

Accountability Designation	SEE	S2E2
Building School Index	Received and calculated to include any students whose non-attended school field is the SEE school.	Buildings where student classrooms are receives Index calculations, but non-resident S2E2 students will not be part their calculation unless that building is reported as a student's "non-attended school" in the MSDS.
District Index	Does not exist. District-level index calculations are not currently computed.	

SENDING SCORES BACK

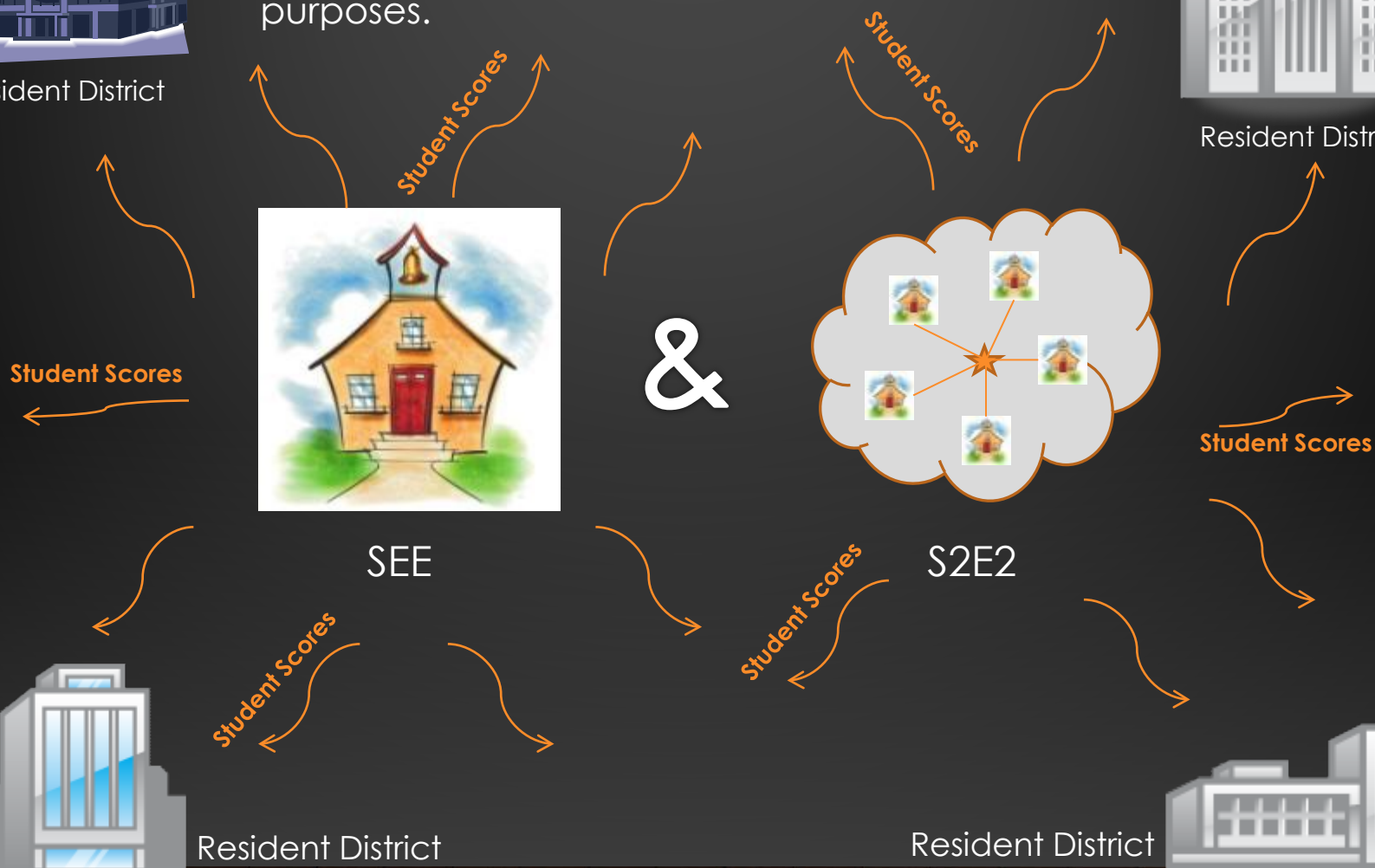


Resident District

Student Assessment Results are Sent Back to the Resident/Home School for School Index Reporting purposes.



Resident District



Student Scores

Student Scores

Student Scores

Student Scores

SEE

S2E2

Student Scores

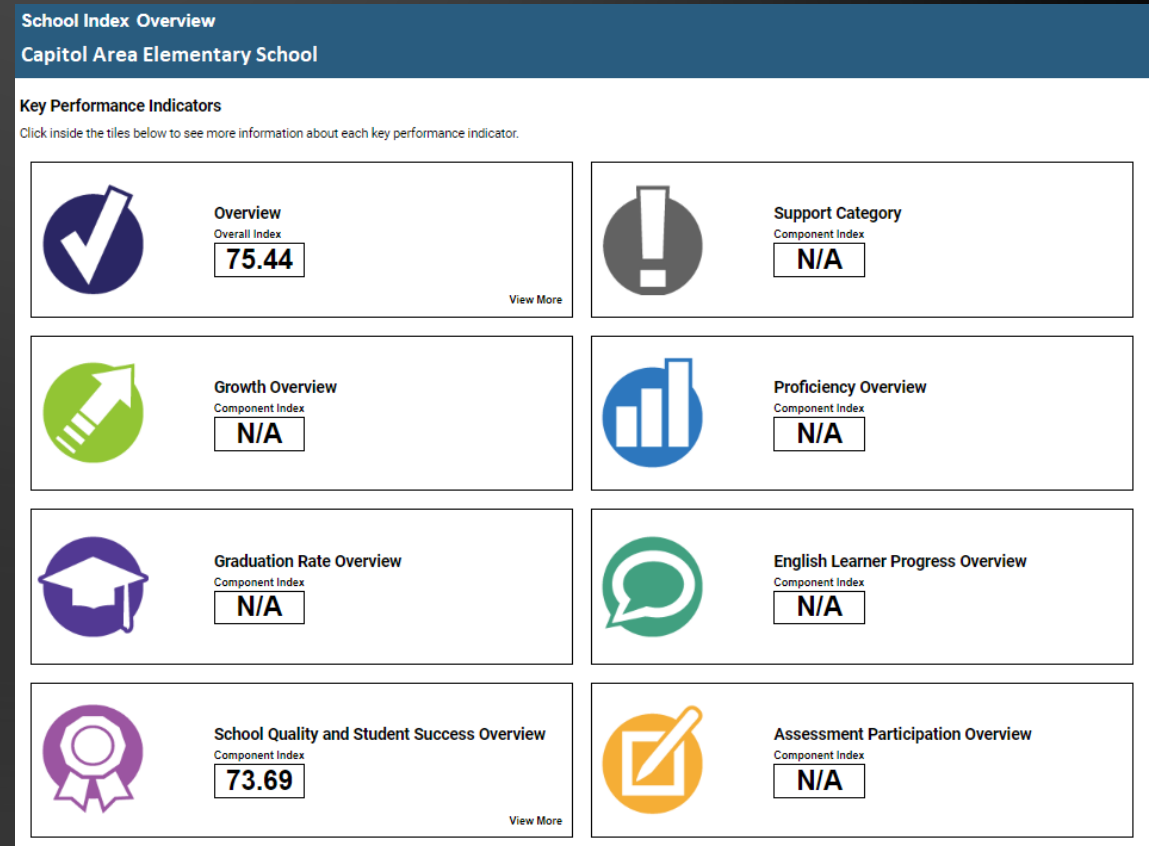
Student Scores

Resident District

Resident District

- SEE and S2E2 students will be accountable to the identified for each participating student in the MSDS (“Building Pupil Would Otherwise Attend”).

- SEE & S2E2 students are pulled out of their respective buildings and sent back to be included in the School Index results for their **“Building Pupil Would Otherwise Attend”** school identified for each participating student in the MSDS (“Building Pupil Would Otherwise Attend”).



APPLICATIONS DUE MONDAY, JANUARY 13, 2025

- SEEs/S2E2s must reapply annually to be SEEs/S2E2s for each applicable school year!

Submit application and ALL materials having required provisions of the Sending Scores Back Application by application deadline.

- Applications are completely electronic and will available at: www.mi.gov/sees.
- Applications must be submitted by **MONDAY, JANUARY 13, 2025 at 5:00PM.**

ONCE AN ENTITY IS APPROVED AS A SEE OR S2E2, WHAT HAPPENS?

- Step 1: EEM is updated at www.mi.gov/een by CEPI at the request of MDE for approved Sending Scores Back Program applicants.
 - Entity will be flagged as a SEE or S2E2 and a list of member districts will be uploaded.
 - If the entity is not already established, a new entity will be created.
- Step 2: Entity is notified of their approval/denial as a SEE/S2E2.

CONTINUED...

- Step 3: All assessment functions should happen normally; pre-ID students in the school in which they are physically educated, etc.
- Step 4: Report students appropriately in the MSDS.
- Step 5: Check your Verification of Enrollment, Answer Documents, and Not Tested Students on the Secure Site.
- Step 6: SEE/S2E2 scores sent back for accountability in School Index results.

SEES & S2E2S

DISCLAIMERS AND FINAL WORDS



APPROPRIATE USE

- MDE reserves the right to:
 - Audit SEE and S2E2 entities for student assessment and reporting compliance
 - Monitor the use of SEE/S2E2 codes including the new “**Building Pupil Would Otherwise Attend**” school
 - Remove SEE/S2E2 status if found abused

MAKING THIS POLICY WORK...

- Please note that the “Building Pupil Would Otherwise Attend” characteristic must be submitted in the Spring 2025 General Collection or through Student Record Maintenance by the Spring 2024 Assessment Snapshot for correct attribution to occur in the sending back of spring 2025 assessment scores used in 2024-25 school accountability reporting. The dates listed below are the anticipated “As Of” and SRM deadlines for the Spring 2025 Assessment Snapshots by test type. Please refer to the Spotlight on Student Assessment and Accountability Newsletters in late spring for updated/final “As Of” and SRM dates.

<u>Assessment Reporting Snapshot</u>	<u>As Of Date</u>	<u>SRM Deadline</u>
SAT, M-STEP, MI-Access	Mid-May, 2025	Early June 2025
WIDA ACCESS or WIDA Alternate Access for ELLs	Late March , 2025	Late May 2025

- The “Building Pupil Would Otherwise Attend” characteristic must be submitted in the End-Of-Year (EOY) 2025 Collection or through 2024-25 school year Student Record Maintenance by the close of the GAD Appeal Window and SRM Collection for Grad Rate Appeals and Section 23A Claims for correct attribution to occur in the sending back of 2024-25 graduation rates that will be used in 2025-26 school accountability reporting. The GAD Appeal Window and SRM Collection for Grad Rate Appeals and Section 23A claims will close on the date listed in the online CEPI Master Calendar.

<u>Event</u>	<u>As Of Date</u>	<u>SRM Deadline</u>
SRM Collection for Grad Rate Appeals and Section 23A Claims	Late August, 2025	Mid-September, 2025

MAKING THIS POLICY WORK... CONTINUED

- ONLY successful completion of assessment and student reporting practices will ACTUALLY result in student scores being sent back correctly.
- It is critical assessment AND pupil accounting staff IN ALL PARTICIPATING/MEMBER DISTRICTS understand the reporting practices necessary for SEEs/S2E2s to make the program successful.
- Reporting of the “building pupil would otherwise attend” will result in students being attributed to that school for accountability purposes and ERRONEIOUS will not be correctable beyond normal MSDS collection certification deadlines.

QUESTIONS? COMMENTS?

- Matt Gleason

School Accountability Unit

Call: 517-241-7039 or Email: MDE-Accountability@michigan.gov