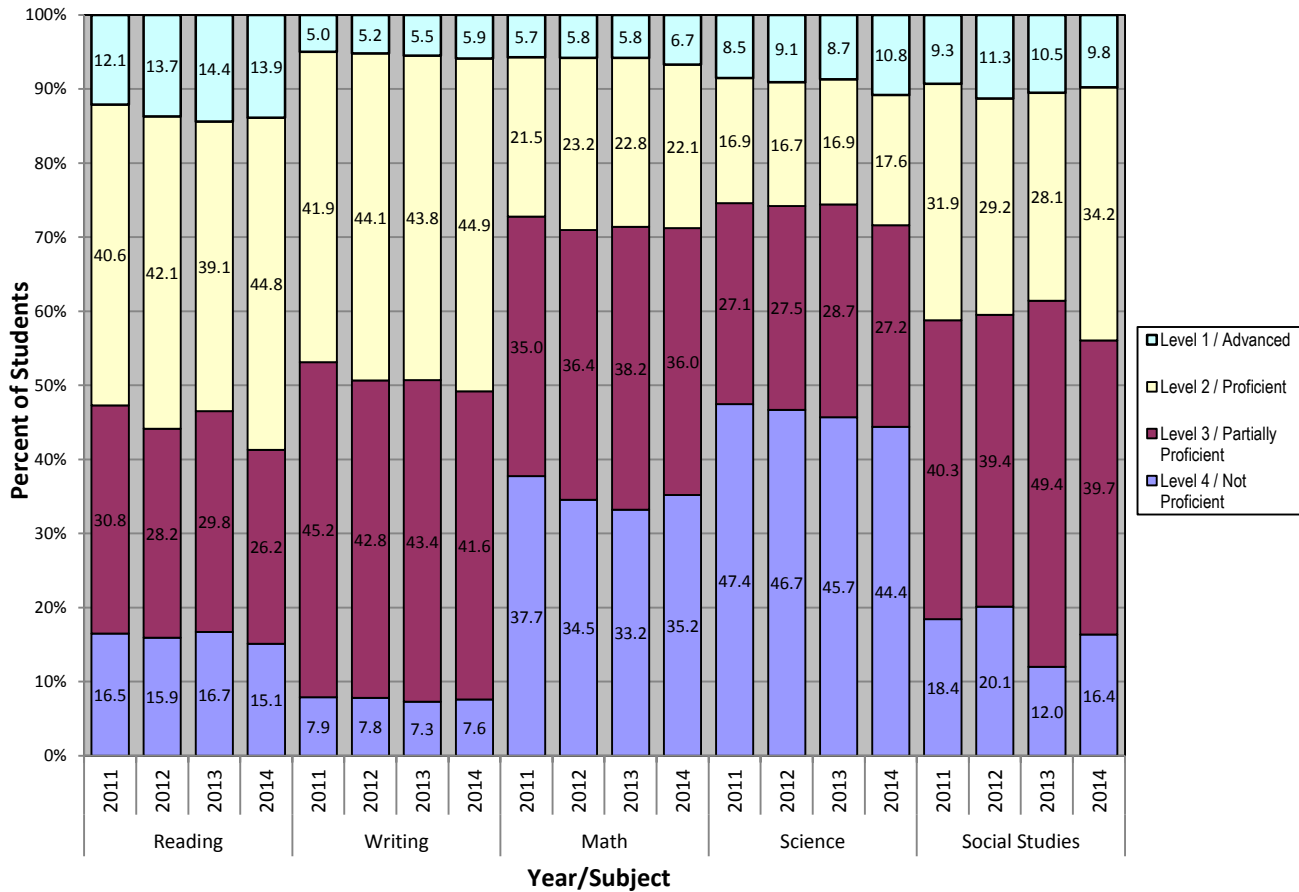


Spring 2014 Michigan Merit Exam (MME) Statewide Results



Subject	Year	Number of Students Assessed	Level 4 / Not Proficient	Level 3 / Partially Proficient	Level 2 / Proficient	Level 1 / Advanced	Levels 1 & 2 / Proficient or Above	Mean Scale Score
Reading	2011	107995	16.5	30.8	40.6	12.1	5270%	1107.2
	2012	106321	15.9	28.2	42.1	13.7	5600%	1108.7
	2013	105329	16.7	29.8	39.1	14.4	5400%	1107.6
	2014	105126	15.1	26.2	44.8	13.9	5900%	1109.9
Writing	2011	108590	7.9	45.2	41.9	5.0	4690%	1094.5
	2012	106892	7.8	42.8	44.1	5.2	4900%	1095.8
	2013	105616	7.3	43.4	43.8	5.5	4900%	1096.1
	2014	105588	7.6	41.6	44.9	5.9	5100%	1096.7
Math	2011	107293	37.7	35.0	21.5	5.7	2730%	1094
	2012	105536	34.5	36.4	23.2	5.8	2900%	1098
	2013	104691	33.2	38.2	22.8	5.8	2900%	1096.4
	2014	104613	35.2	36.0	22.1	6.7	2900%	1098.2
Science	2011	107653	47.4	27.1	16.9	8.5	2550%	1103.2
	2012	105901	46.7	27.5	16.7	9.1	2600%	1103.1
	2013	105045	45.7	28.7	16.9	8.7	2600%	1104.2
	2014	104978	44.4	27.2	17.6	10.8	2800%	1104
Social Studies	2011	107757	18.4	40.3	31.9	9.3	4120%	1122.7
	2012	105899	20.1	39.4	29.2	11.3	4100%	1123.4
	2013	105008	12.0	49.4	28.1	10.5	3900%	1124
	2014	104943	16.4	39.7	34.2	9.8	4400%	1123.8