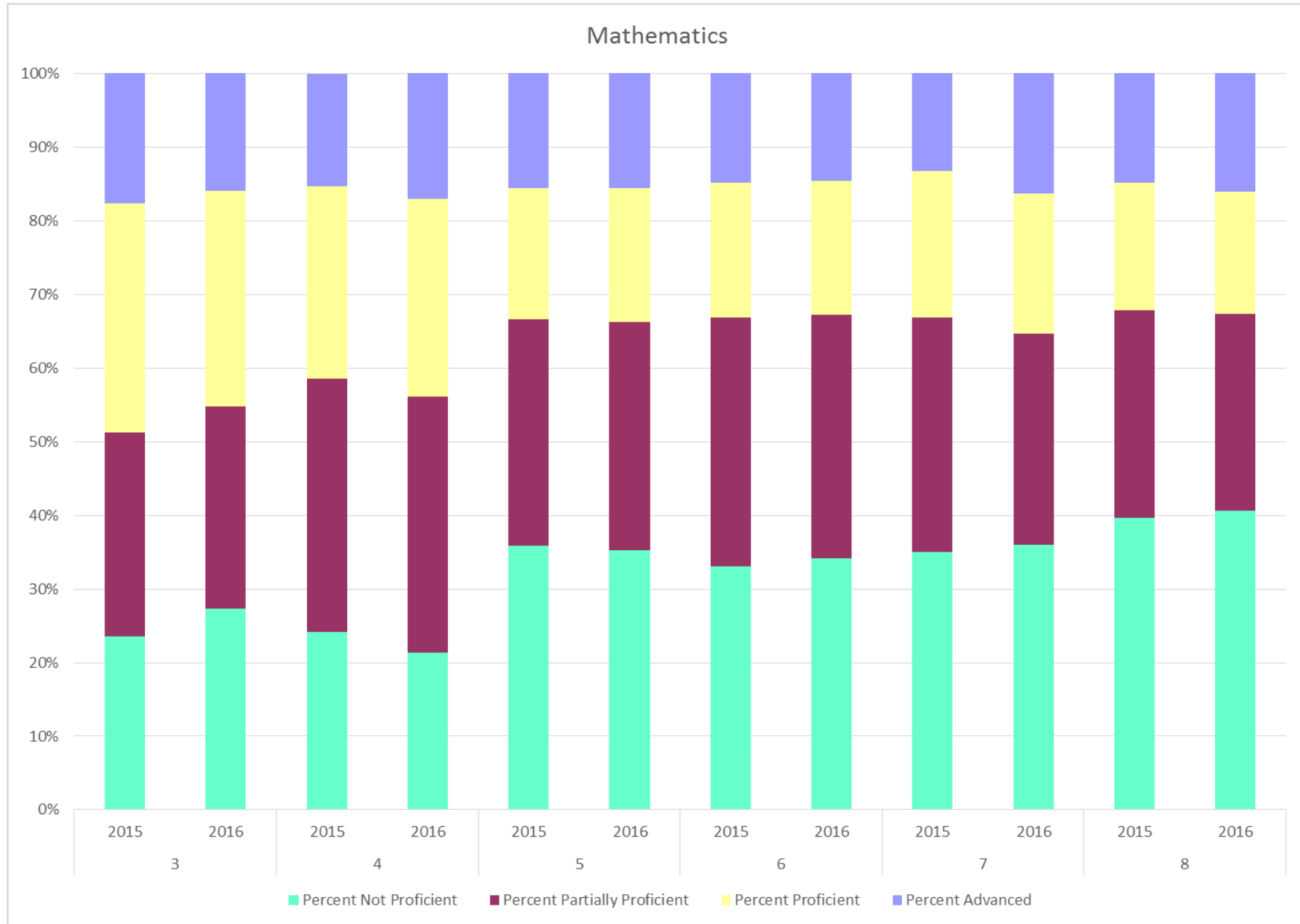


**2016 STATEWIDE MICHIGAN STUDENT TEST OF EDUCATIONAL PROGRESS (M-STEP) RESULTS**  
**Percent of Students by Performance Category**

**PUBLIC – Mathematics**



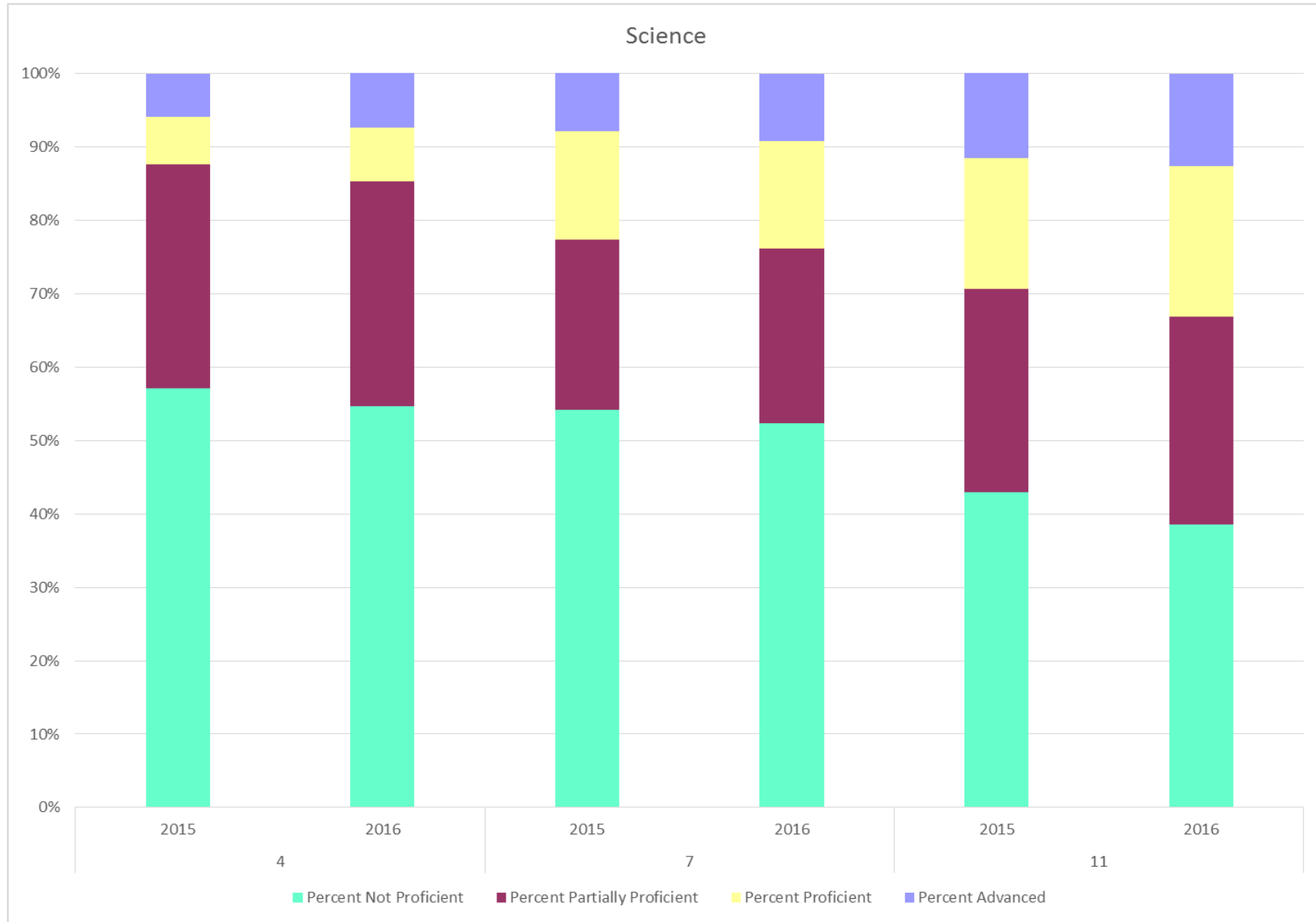
**2016 STATEWIDE MICHIGAN STUDENT TEST OF EDUCATIONAL PROGRESS (M-STEP) RESULTS**  
**Percent of Students by Performance Category**

**PUBLIC – Mathematics**

<b>Grade</b>	<b>Year</b>	<b># Included</b>	<b>Not Proficient</b>	<b>Partially Proficient</b>	<b>Proficient</b>	<b>Advanced</b>	<b>Proficient or Above</b>
03	2015	107488	23.5%	27.7%	31.1%	17.7%	48.8%
	2016	108040	27.3%	27.5%	29.2%	16.0%	45.2%
04	2015	106231	24.2%	34.4%	26.1%	15.2%	41.4%
	2016	107501	21.3%	34.8%	26.9%	17.1%	44.0%
05	2015	109155	35.9%	30.7%	17.8%	15.6%	33.4%
	2016	106431	35.3%	30.9%	18.2%	15.6%	33.8%
06	2015	107870	33.1%	33.7%	18.3%	15.0%	33.3%
	2016	109742	34.2%	33.0%	18.2%	14.6%	32.8%
07	2015	109012	35.0%	31.8%	19.9%	13.3%	33.3%
	2016	108839	36.0%	28.7%	19.0%	16.3%	35.3%
08	2015	111813	39.7%	28.1%	17.4%	14.8%	32.2%
	2016	109075	40.6%	26.7%	16.6%	16.1%	32.7%

**2016 STATEWIDE MICHIGAN STUDENT TEST OF EDUCATIONAL PROGRESS (M-STEP) RESULTS**  
**Percent of Students by Performance Category**

**PUBLIC - Science**



**2016 STATEWIDE MICHIGAN STUDENT TEST OF EDUCATIONAL PROGRESS (M-STEP) RESULTS**  
**Percent of Students by Performance Category**

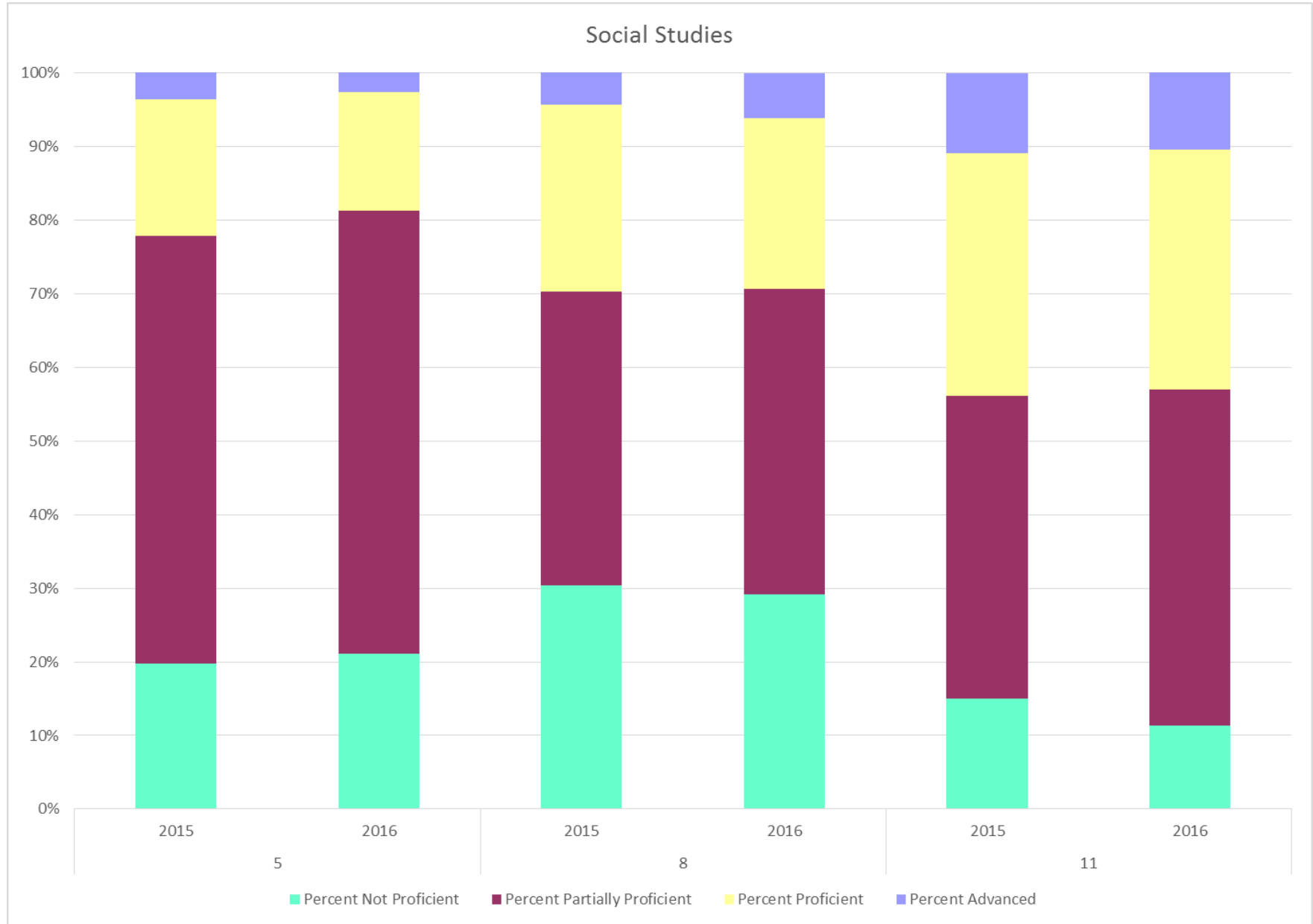
---

**PUBLIC - Science**

<b>Grade</b>	<b>Year</b>	<b># Included</b>	<b>Not Proficient</b>	<b>Partially Proficient</b>	<b>Proficient</b>	<b>Advanced</b>	<b>Proficient or Above</b>
04	2015	105979	57.1%	30.5%	6.5%	5.8%	12.4%
	2016	107367	54.7%	30.6%	7.3%	7.4%	14.7%
07	2015	109227	54.1%	23.3%	14.7%	8.0%	22.7%
	2016	108878	52.3%	23.8%	14.7%	9.1%	23.9%
11	2015	103223	42.9%	27.7%	17.9%	11.5%	29.4%
	2016	104015	38.5%	28.4%	20.4%	12.6%	33.0%

**2016 STATEWIDE MICHIGAN STUDENT TEST OF EDUCATIONAL PROGRESS (M-STEP) RESULTS**  
**Percent of Students by Performance Category**

**PUBLIC – Social Studies**



**2016 STATEWIDE MICHIGAN STUDENT TEST OF EDUCATIONAL PROGRESS (M-STEP) RESULTS**  
**Percent of Students by Performance Category**

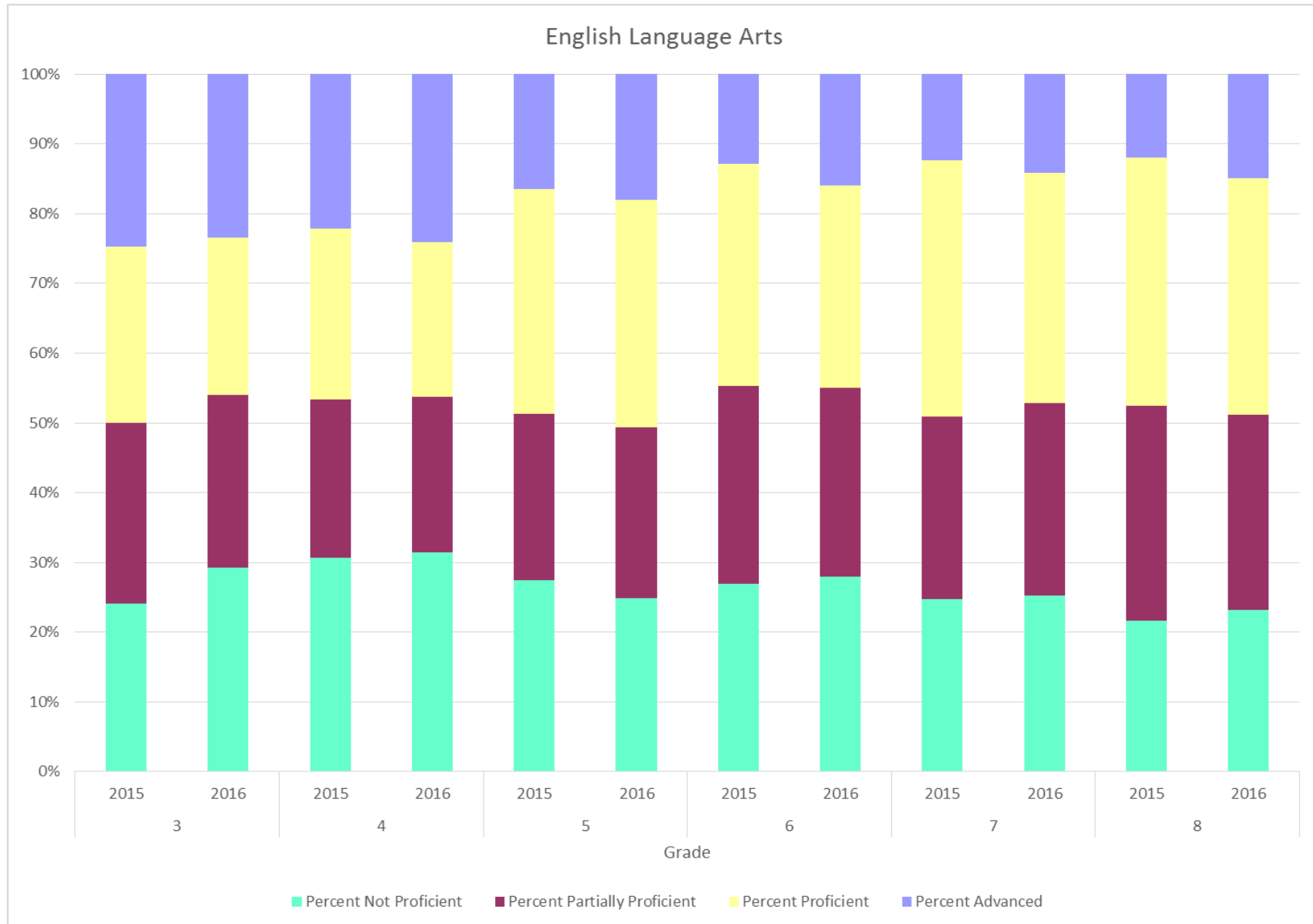
---

**PUBLIC – Social Studies**

Grade	Year	# Included	Not Proficient	Partially Proficient	Proficient	Advanced	Proficient or Above
5	2015	109113	19.7%	58.1%	18.6%	3.6%	22.2%
	2016	106544	21.1%	60.1%	16.1%	2.7%	18.9%
8	2015	111842	30.4%	39.9%	25.3%	4.5%	29.7%
	2016	109049	29.1%	41.5%	23.2%	6.1%	29.3%
11	2015	103194	15.0%	41.1%	32.9%	10.9%	43.9%
	2016	104015	11.3%	45.7%	32.5%	10.6%	43.1%

**2016 STATEWIDE MICHIGAN STUDENT TEST OF EDUCATIONAL PROGRESS (M-STEP) RESULTS**  
**Percent of Students by Performance Category**

**PUBLIC – English Language Arts (ELA)**



**2016 STATEWIDE MICHIGAN STUDENT TEST OF EDUCATIONAL PROGRESS (M-STEP) RESULTS**  
**Percent of Students by Performance Category**

---

**PUBLIC – English Language Arts (ELA)**

Grade	Year	# Included	Not Proficient	Partially Proficient	Proficient	Advanced	Proficient or Above
3	2015	107178	24.1%	25.9%	25.3%	24.7%	50.0%
	2016	107964	29.2%	24.8%	22.6%	23.4%	46.0%
4	2015	105981	30.7%	22.7%	24.5%	22.1%	46.6%
	2016	107442	31.4%	22.3%	22.2%	24.1%	46.3%
5	2015	109002	27.4%	23.9%	32.2%	16.5%	48.7%
	2016	106414	24.8%	24.6%	32.6%	18.0%	50.6%
6	2015	107798	26.9%	28.4%	31.8%	12.9%	44.7%
	2016	109697	28.0%	27.0%	29.1%	15.9%	45.0%
7	2015	108944	24.7%	26.2%	36.7%	12.4%	49.1%
	2016	108822	25.3%	27.6%	33.0%	14.1%	47.1%
8	2015	111863	21.6%	30.8%	35.7%	11.9%	47.6%
	2016	108980	23.2%	28.0%	33.9%	14.9%	48.9%