

CULTURAL COMPETENCIES PANEL

Ricardo Garay, BBA

Erika Brown-Binion, MA

Aimmee Mullendore, RN



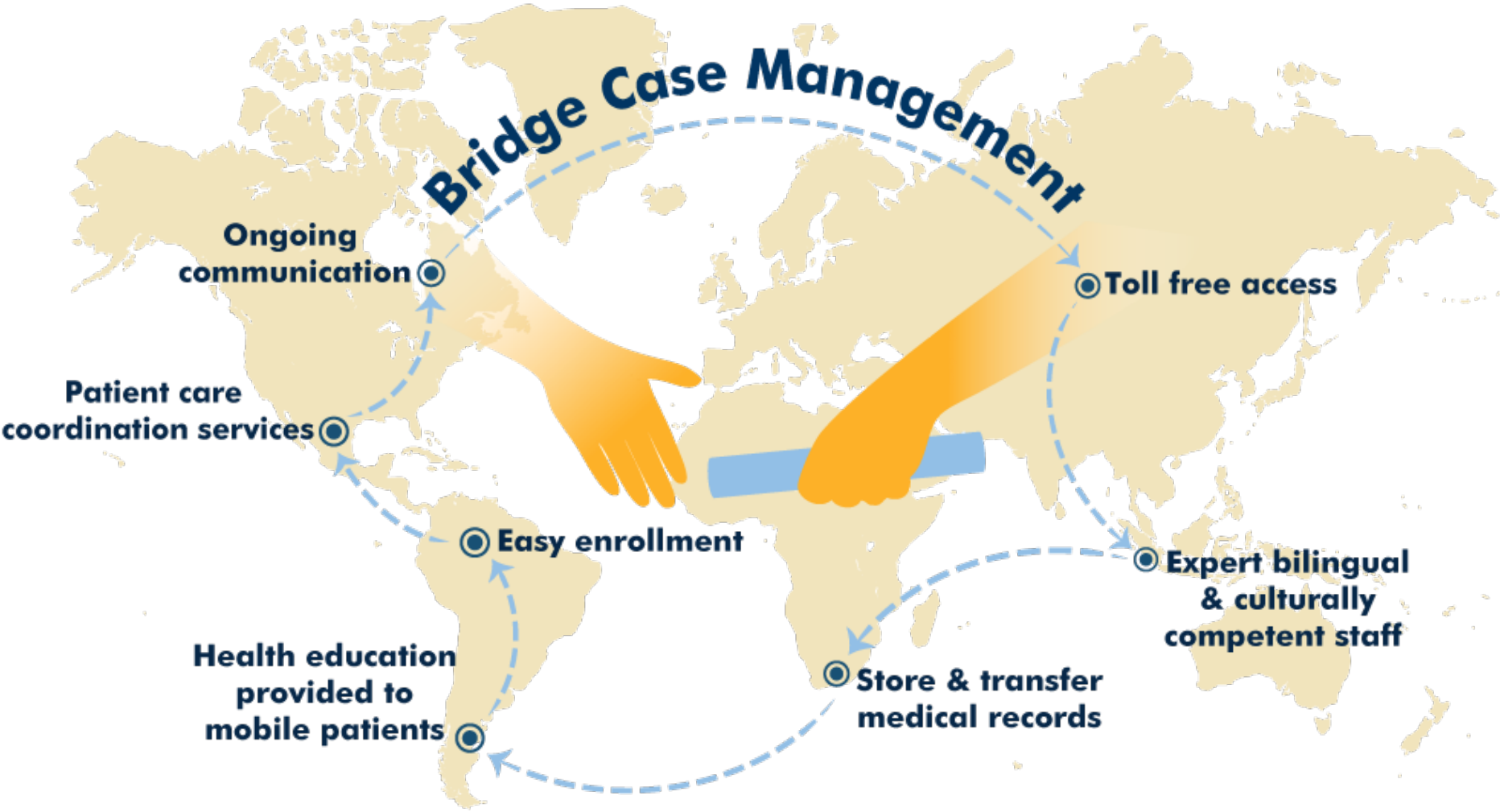


- 10,000 constituents
- Founded in 1984
- Oldest clinical network serving the mobile poor
- MCN's primary constituents
 - Federally funded Migrant & Community Health Centers
 - State and local health departments



Photo © Alan Pogue

MCN's Health Network provides continuity of care to mobile patients and their providers



Health Network

MCN's Health Network assures continuity of care and treatment completion by providing comprehensive case management, medical records transfer, and follow-up services for mobile patients.

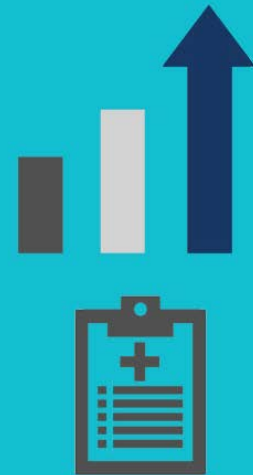
To date, we have worked with patients from

111 engaged partner countries



This year, we had

46%
increased communication with Health Centers



and additionally

33%
increased need and usage by Health Departments





**Refugee
Development
Center**

History and Mission:

The Refugee Development Center started in 2002 with the mission of providing the educational and social support refugees need to become self-sufficient members of society.

RDC Programs

Youth: After-school tutoring and mentoring, GLOBE Camp, Newcomers Soccer Program, Nutrition and Health Education, Girls Group

Adult: ESOL Classes, Home Visits, Parent Nights, Parent/Teacher Conference Support, Women's Sewing Circle, Nutrition Education.

Outreach: Advocacy, resource matching, community partnerships and education



BRANCH-HILLSDALE-ST. JOSEPH COMMUNITY HEALTH AGENCY

Aimnee Mullendore, Clinic Coordinator and CD Nurse St. Joseph County



BRANCH-HILLSDALE-ST. JOSEPH
COMMUNITY HEALTH AGENCY



570 Marshall Street
Coldwater, MI
517-279-9561



20 Care Drive,
Hillsdale, MI
517-437-7395



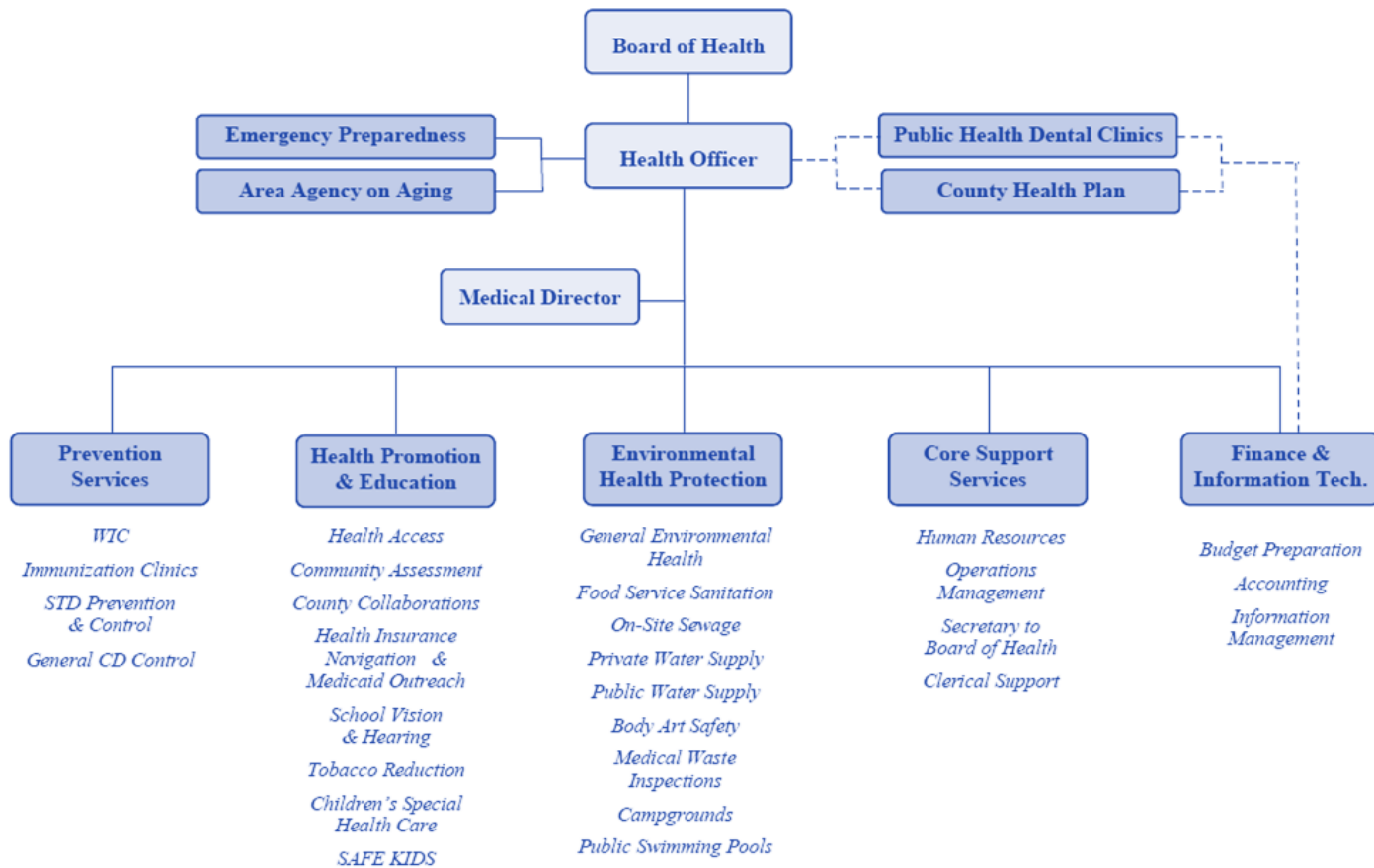
1110 Hill Street
Three Rivers, MI
269-273-2161

www.bhsj.org
WHERE WE ARE & WHO WE ARE.....



BRANCH-HILLSDALE-ST. JOSEPH
COMMUNITY HEALTH AGENCY

BHSJ CHA ORGANIZATIONAL CHART



OUR MISSION...

*We promote optimal health to prolong life by
preventing disease
and assuring the protection
of the public's health
in our community and environment*

OUR VISION...

*We envision positively impacting
the health of individuals, families,
communities and the environment through
**responsiveness, competence and
collaboration***



PREVENTION SERVICES...



BRANCH-HILLSDALE-ST. JOSEPH
COMMUNITY HEALTH AGENCY

▪ **Monthly Food Package:**

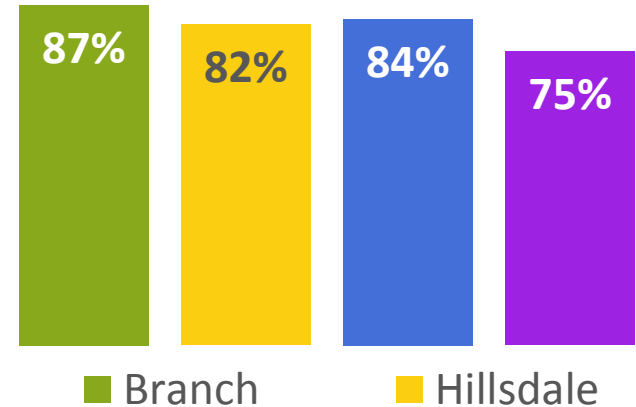
- Fresh fruits and vegetables
- Whole grain cereals, breads, brown rice, and tortillas
- Low fat dairy products, including milk, cheeses, and eggs
- Formula, baby foods, including cereal, fruits, vegetables, and meats
- Canned fish, peanut butter and juices

▪ **Project Fresh**

- Provides coupon booklet that has ten \$2 coupons
 - Must be used at an approved Michigan's Farmer Market or similar venue
 - Must be used between June 1 and October 31

▪ **WIC Peer Breastfeeding Support**

**% of Births Paid By Medicaid with
Moms Receiving WIC Benefits**



WIC PROGRAM

Women, Infants
& Children



- **Provide Immunizations from Birth through Adult:**

- Childhood Immunizations
 - Required for school entry
- Travel Immunizations
- Flu Shots

- **Vaccine for Children Program**

- Medicaid
- Uninsured
- Children who lack vaccine coverage

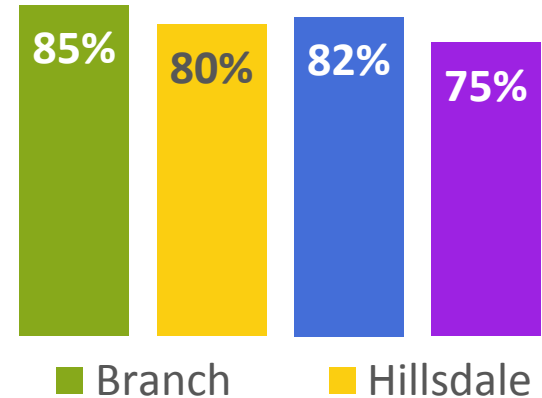
- **Provider Education**

- **Immunization Recalls**

- **Work with Schools to assure adequate immunization status**

- **Issue Waivers**

% of 19-36 Month Olds Fully Immunized - 4:3:1:3:3



IMMUNIZATIONS

Infants to Adult



- **Disease Surveillance:**

- Michigan Disease Surveillance System
- MI HAN (Michigan's Health Alert Network)
- Local Reporting
 - Providers
 - Online CD Reporting - Schools
- Health Alert Team

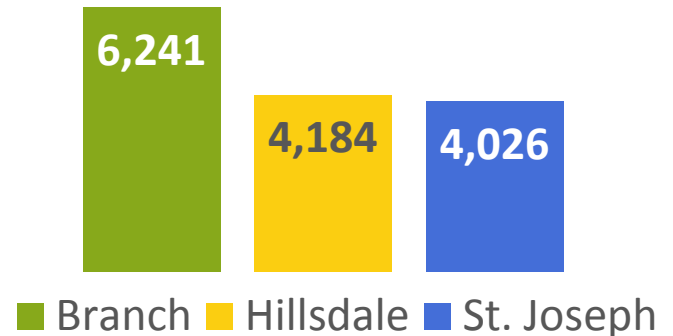
- **Tuberculosis**

- **STD Testing and Contact Follow-up**

- **HIV/AIDS Testing and Contact Follow-up**

- **Emerging Diseases**

Total # of Diseases Reported, 2014



COMMUNICABLE DISEASES

Infants to Adult





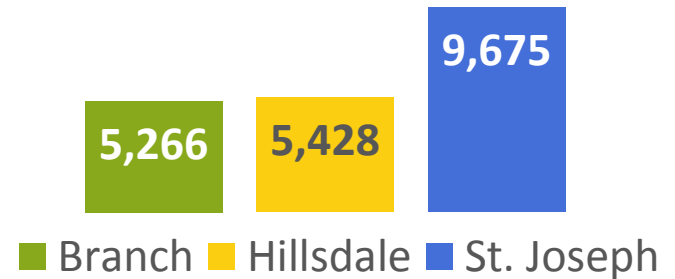
HEALTH EDUCATION SERVICES...



BRANCH-HILLSDALE-ST. JOSEPH
COMMUNITY HEALTH AGENCY

- **Vision Screening:**
 - Preschool & Kindergarten
 - 1st , 3rd , 5th , 7th & 9th Grades
- **Hearing Screening:**
 - Preschool & Kindergarten
 - 2nd and 4th Grades
- **Screen Children in**
 - Public/Private Schools,
 - Daycares and Head Starts
- **Performs Rescreens**
- **Follow-ups with Parents Whose Children Did Not Pass**

Total # of Hearing & Vision Screens, 2014



HEARING & VISION SCREENINGS

Preschool to High School



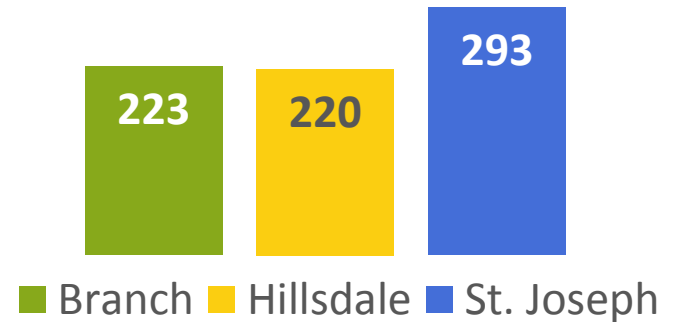
- **Diagnosis-based Program**

- More than 2,600 eligible diagnoses
 - Asthma
 - Blood Disorders
 - Cancers
 - Congenital Anomalies
 - Metabolic Diseases
 - And many more
- Not Income-based

- **Children up to age 21 years**

- Some adults who have certain eligible conditions such as hemophilia or cystic fibrosis

**Total # of CSHCS Enrollees,
2015**



CSHCS

**Children's Special
Health Care Services**



- Pays for specialty medical bills
- Helps find specialty services
- Helps family with language and cultural services
- Connects families to community-based services
- 2/3rds of our enrollees receive Medicaid Insurance

"[CSHCS] ...is better than what I had originally thought... the more I learned about it, the more I couldn't believe there was something so fabulous."

2014 Focus Group Participant

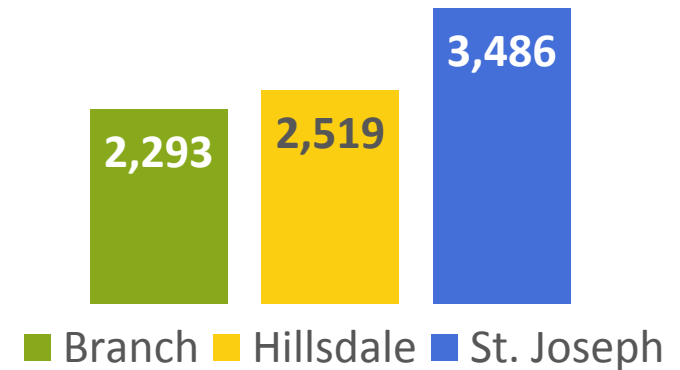
CSHCS

Children's Special
Health Care Services



- **Certified Navigators**
- **Marketplace**
 - Answering questions
 - Establishing an electronic account & completing application
 - Assistance in understanding their healthcare needs
 - Assistance with filing grievances and/or appeals
 - Assistance in understanding the penalties
- **MDHHS Bundled Benefits**
 - Medicaid
 - State Emergency Relief (SER)
 - Food Stamps
 - Cash Assistance
 - Child Care

Total # of Healthy Michigan Plan Enrollees, 2015



IN-PERSON ASSISTERS

Individuals, Families & Small Businesses



OTHER HEALTH EDUCATION SERVICES

- **Tobacco Reduction Coalition**
- **SAFE KIDS**
 - Car Seat Checks/Installations
 - Safe Sleep
- **Health Demography & Performance Indicators**
- **Wellness Presentations**
- **School Presentations**
 - STD/AIDS/HIV
 - Reproductive Health
- **Health Fairs**
- **Pamphlets & Newsletters**
- **Program & Administration Support**
 - Customer Satisfaction
 - Quality Improvement
 - Accreditation
 - Strategic Planning
 - Grant/Report Writing





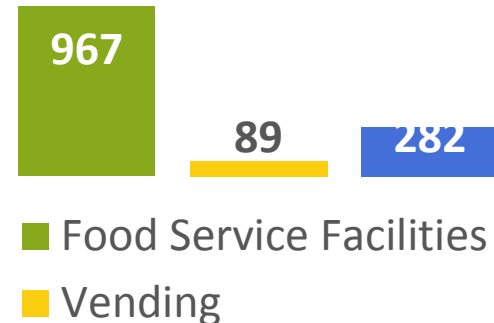
ENVIRONMENTAL HEALTH SERVICES...



BRANCH-HILLSDALE-ST. JOSEPH
COMMUNITY HEALTH AGENCY

- Inspect Food Facilities Twice a Year per Michigan Food Law
- Conduct Food Service Plan Reviews
- Inspect and Issue Temporary Food Permits
- Provide Food Manager/Employee Classes
- Issue Certificates of Excellence Awards
- Publish & Distributes Annual 'Food for Thought' Newsletter
- Work Collaboratively with Prevention Services and Emergency Preparedness on Foodborne Illness Complaints/Investigations

Total # of Food Inspections, 2014



FOOD PROTECTION

Individuals, Families & Communities



OTHER ENVIRONMENTAL HEALTH SERVICES

- Well and Septic Permits
- Septage truck and disposal site inspections
- Free Radon Test Kits
- Nuisance Complaints
- Campground Inspections
- Swimming Pool Inspections
- Body Art Facility Inspections
- Medical Waste Inspections
- Meth Lab Clean-up Oversight
- Housing Complaint Investigations





AREA AGENCY ON AGING SERVICES...



BRANCH-HILLSDALE-ST. JOSEPH
COMMUNITY HEALTH AGENCY

AREA AGENCY ON AGING SERVICES...

■ **Assessing Community Needs & Funding Services**

- Options Counseling
- In-Home Services
- Nutrition Services
- Community-based Services
- Assistive Devices & Technology
- Legal Assistance
- Transportation
- Medicare/Medicaid Assistance Program
- Grandparents Raising Grandchildren

- Housing Options & Guides
- Benefits & Services for Veterans
- Senior Centers & Volunteer Opportunities

■ **Advocacy**

■ **Information & Assistance**

■ **Community Living Program**

■ **Health & Wellness Programs**





MY COMMUNITY DENTAL CENTERS



BRANCH-HILLSDALE-ST. JOSEPH
COMMUNITY HEALTH AGENCY

MY COMMUNITY DENTAL CENTERS

- **Contracted through Michigan Community Dental Clinics, Inc.**
- **Provides:**
 - Oral Exam/Cleaning
 - Fillings
 - Tooth Removal
 - Teeth Replacements including dentures and partials
 - Emergency Treatment
 - Fluoride Treatment
- **2 Dental Clinics**
 - **Hillsdale:** 20 Care Drive, Suite D
 - **Three Rivers:** 721 6th Avenue, Suite B
- **Accepts:**
 - Children on Medicaid (including Healthy Kids Dental and MI Child)
 - Adults on Medicaid and Healthy Michigan Plan
 - Low income, uninsured adults with incomes below 200% of the Federal Poverty Line
- **Fees reduced for eligible uninsured**

