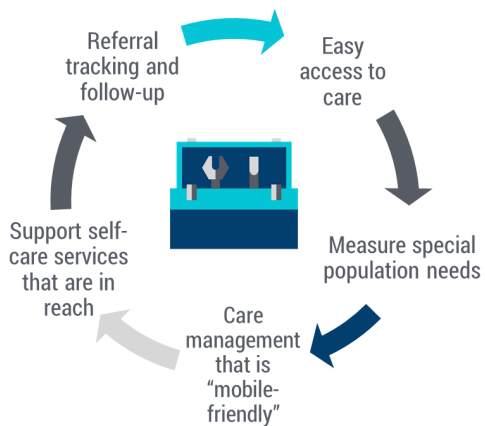


# Creating a Patient Centered Medical Home for Those on the Move

## PATIENT CENTERED MEDICAL HOME

Migrant Clinicians Network promotes medical home transformation designed to include patients who experience barriers to health care due to mobility, poverty, language, and culture.

### TOOLS FOR PCMH



### CONTACT HEALTH NETWORK



**PHONE**  
800-825-8205 (U.S.)  
01-800-681-9508 (from Mexico)

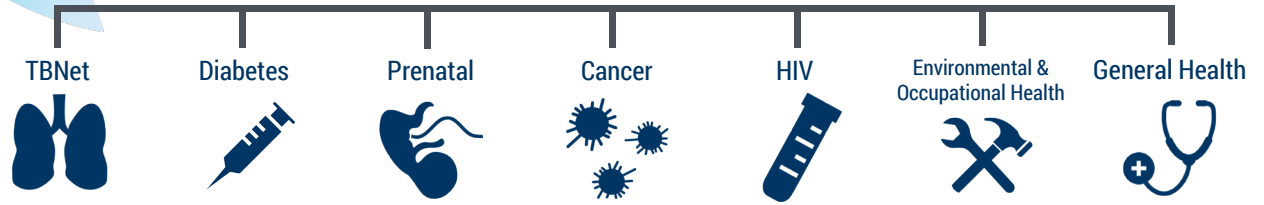
**FAX**  
512-327-6140



[www.migrantclinician.org/health-network](http://www.migrantclinician.org/health-network)



Health Network assures continuity of care and treatment completion by providing comprehensive case management, medical records transfer and follow up services for mobile patients.

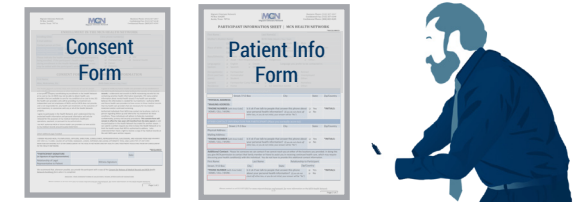


### HEALTH NETWORK ENROLLMENT CRITERIA

- 1 PATIENT IS**
  - » Already mobile, OR
  - » Likely to move
- 2 PATIENT HAS**
  - » Need of a clinic for follow-up
  - » Illness or condition, such as
    - » Active of latent tuberculosis
    - » HIV/AIDs
    - » Hepatitis
    - » Diabetes or pre-diabetes
    - » Hypertension
    - » Cancer, including screening and treatment
    - » Pregnancy, including prenatal and postpartum



### HEALTH NETWORK ENROLLMENT FORMS



### Health Network Bridge Case Management for You



- Toll-free access
- Health education
- Ongoing communication
- Care coordination services
- Store and transfer medical records
- Expert, bilingual, culturally-competent staff

This project was supported by the Health Resources and Services Administration (HRSA) of the U.S. Department of Health and Human Services (HHS) under cooperative agreement number U30CS09742, Technical Assistance to Community and Migrant Health Centers and Homeless for \$1,344,709.00 with 0% of the total NCA project financed with non-federal sources. This information or content and conclusions are those of the author and should not be construed as the official position or policy of, nor should any endorsements be inferred by HRSA, HHS or the U.S. Government.