

Michigan Family Planning Program

Family Planning Annual Report Data Analysis, 2016

WITH TRENDS 2005 -2015



Michigan Department of Health and Human Services (MDHHS)
Family Planning Update Annual Conference 2016



Outline

- Introduction
 - Family Planning in Michigan
- FPAR Data
- Conclusion

Program 2016

- 72,312 clients
- 30 Local Agencies
- 91 Clinics
- 11 Counties have no clinic

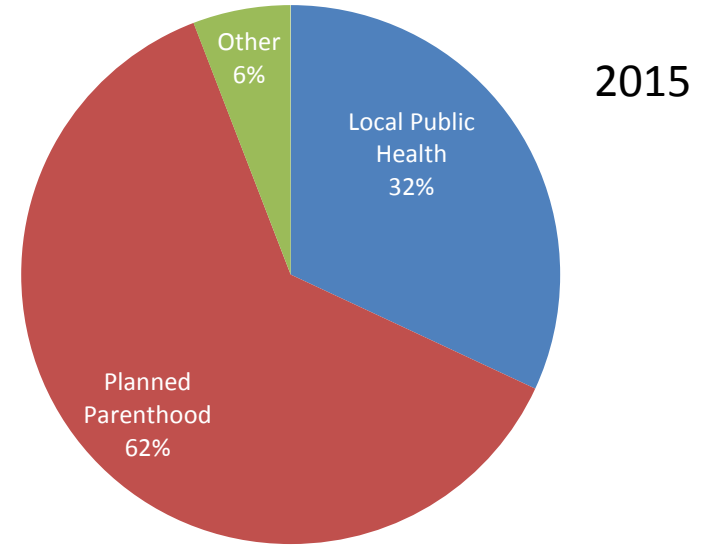
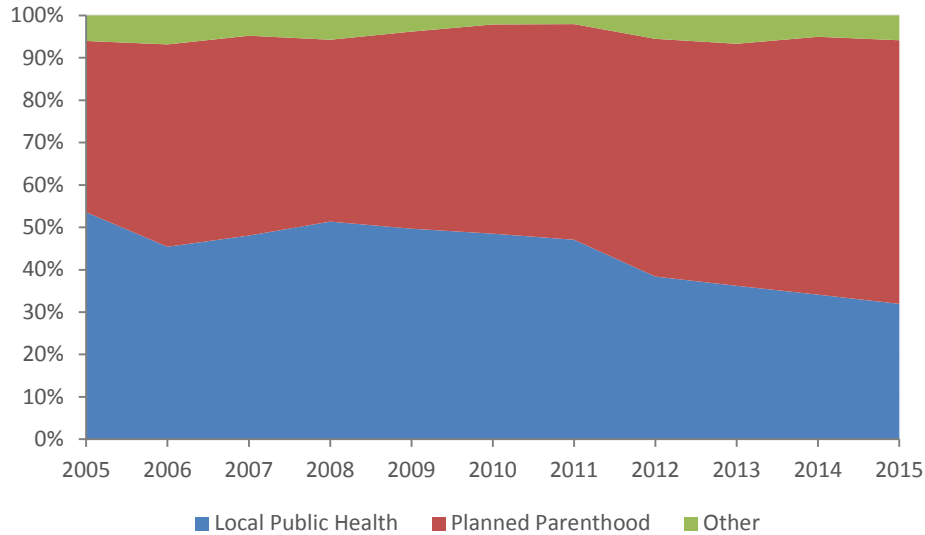
**CHANGE IN
NUMBER OF
CLIENTS BY AGENCY,
2011-2015**

Agency	2015 Total	2015%	2011-2015 % change
Bay	610	0.8%	-43.3%
Benzie-Leelanau	239	0.3%	-43.5%
Berrien	853	1.2%	-44.1%
Central Michigan DHD	1707	2.4%	-44.2%
Chippewa	555	0.8%	-28.8%
Delta-Menominee	690	1.0%	-35.5%
Dickinson-Iron	453	0.6%	-29.0%
District #2	402	0.6%	-31.0%
District #4	313	0.4%	-58.9%
District #10	1698	2.3%	-39.9%
FP of Allegan	398	0.6%	-64.1%
Genesee	1406	1.9%	-51.8%
Grand Traverse	1011	1.4%	-26.3%
Huron	393	0.5%	-32.5%
Ingham	2063	2.9%	-47.4%
Institute for Population Health	3838	5.3%	*
Lenawee	720	1.0%	-52.9%
LMAS	236	0.3%	-43.0%
Macomb	1671	2.3%	-43.0%
Marquette	355	0.5%	-40.3%
Midland	1070	1.5%	-27.9%
Mid-Michigan	778	1.1%	-59.2%
Monroe	672	0.9%	-56.1%
Northwest MI Comm.	763	1.1%	-41.3%
Ottawa	1254	1.7%	-46.4%
P. P. of Mid and South Michigan	35094	48.5%	3.1%
P. P. West and Northern Michigan	9883	13.7%	1.7%
Saginaw	1515	2.1%	-61.8%
Sanilac	383	0.5%	-41.2%
Taylor	382	0.5%	-5.7%
Tuscola	491	0.7%	-38.5%
Western U. P.	416	0.6%	-51.3%
Total	72312	100.0%	

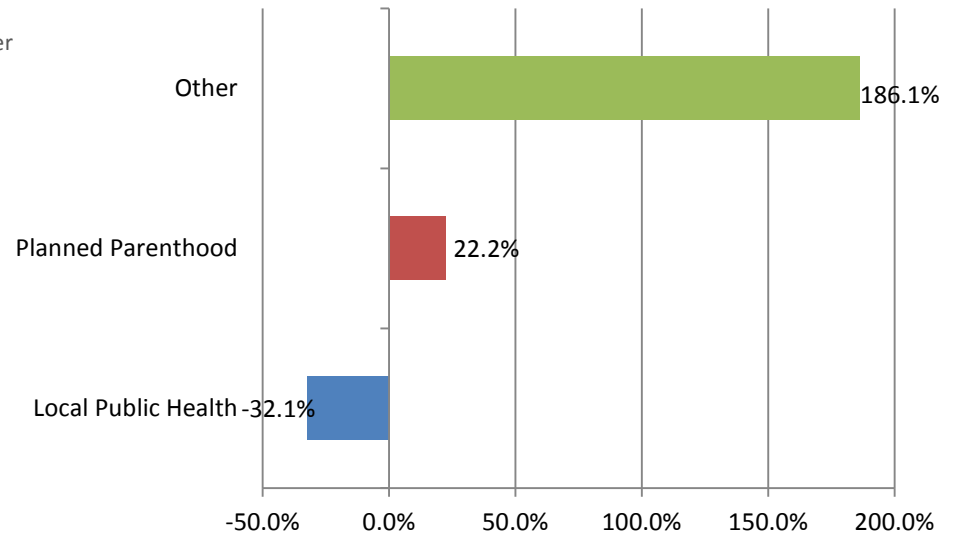
* Did not have a family planning program in 2011

Type of Agency

2005-2015



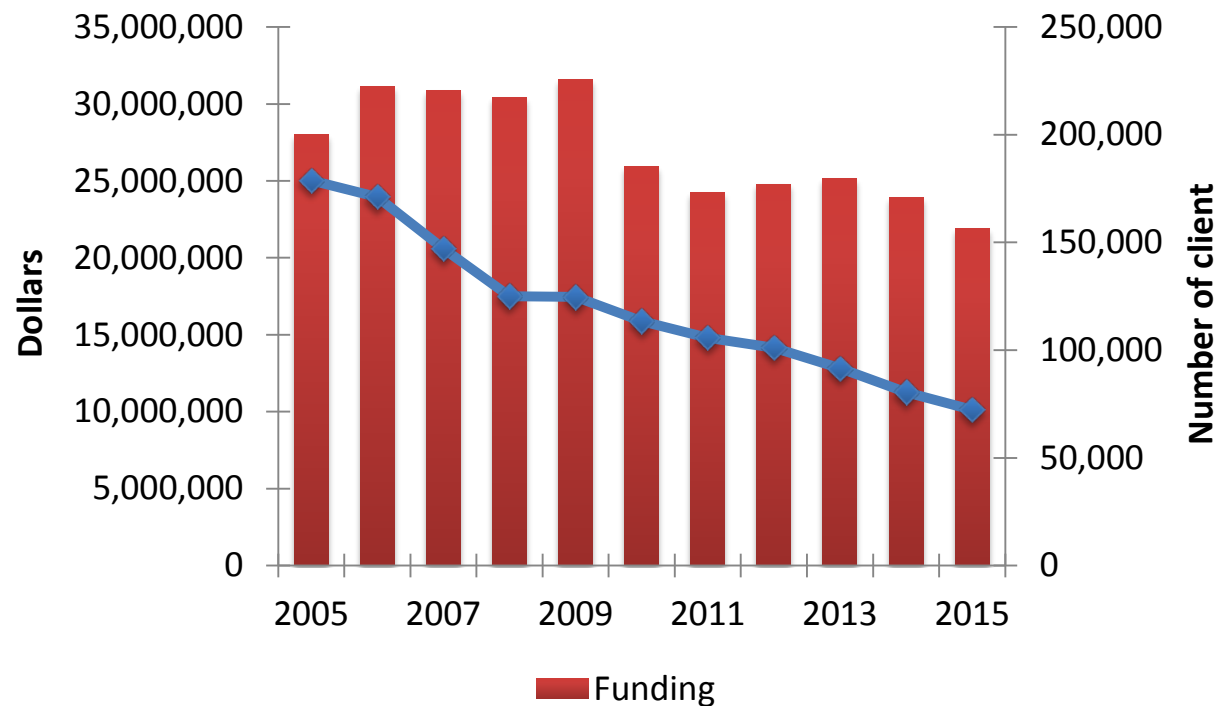
Percent change in the agency type distribution, 2011-2015



Source: MI FPAR, 2005 - 2015

Funding

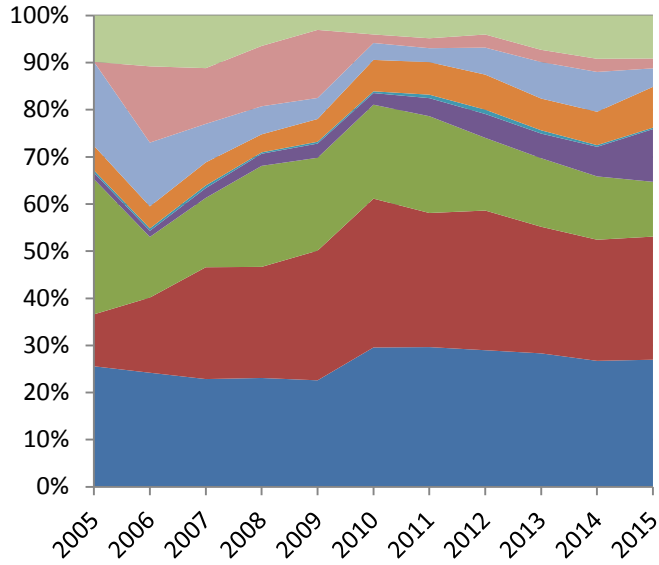
- From 2005 to 2015, total revenue declined 21.8% and the number of users declined by 60%



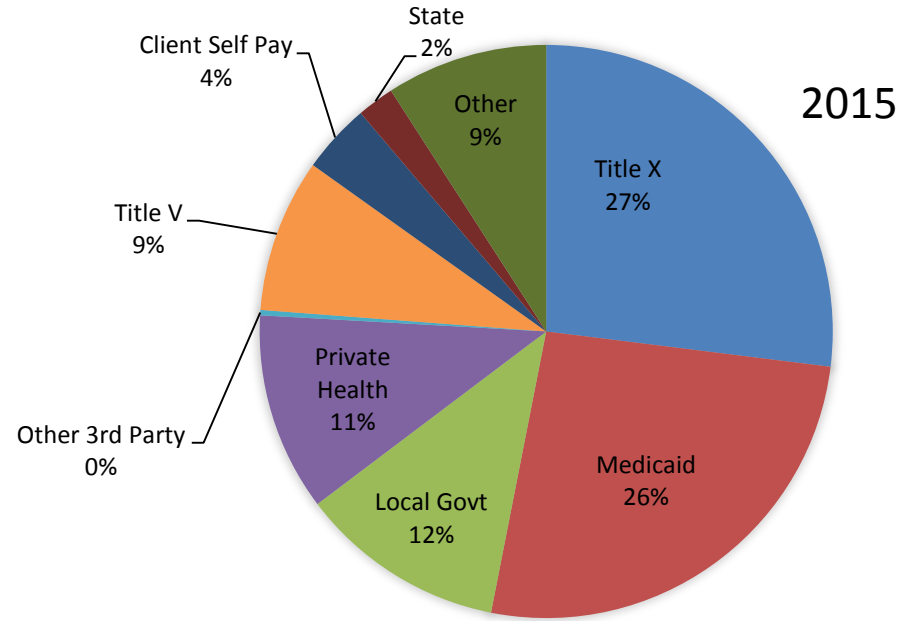
Cost per user in 2005 = \$ 157 2015 = \$ 303 (unadjusted)

Funding by source

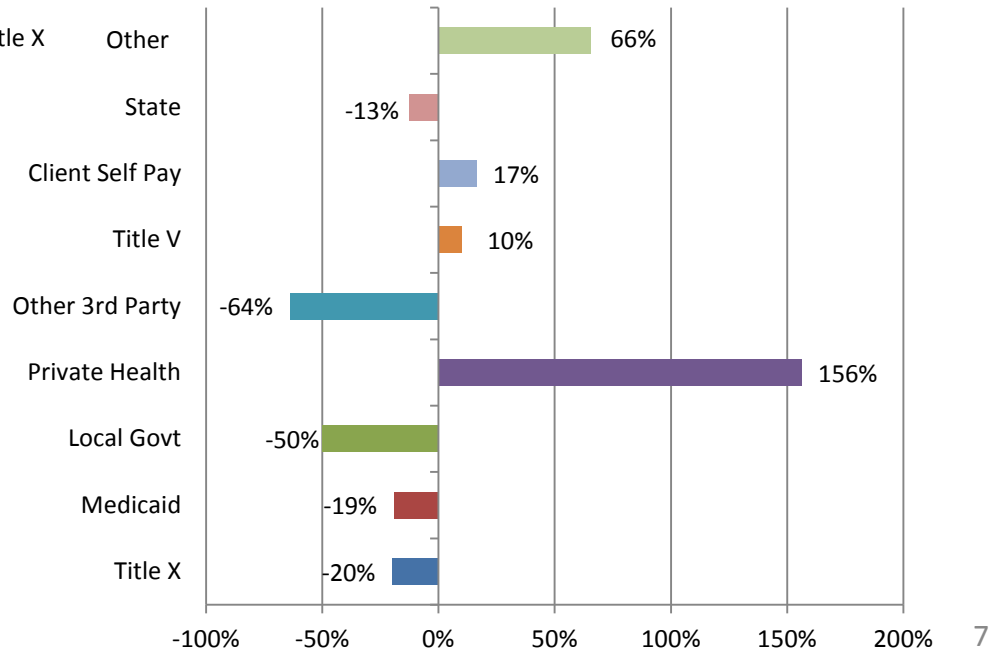
2005-2015



- Other
- State
- Client Self Pay
- Title V
- Other 3rd Party
- Private Health
- Local Govt
- Medicaid
- Title X



Percent change in the amount of funding (\$), 2011-2015



Source: MI FPAR, 2005 - 2015

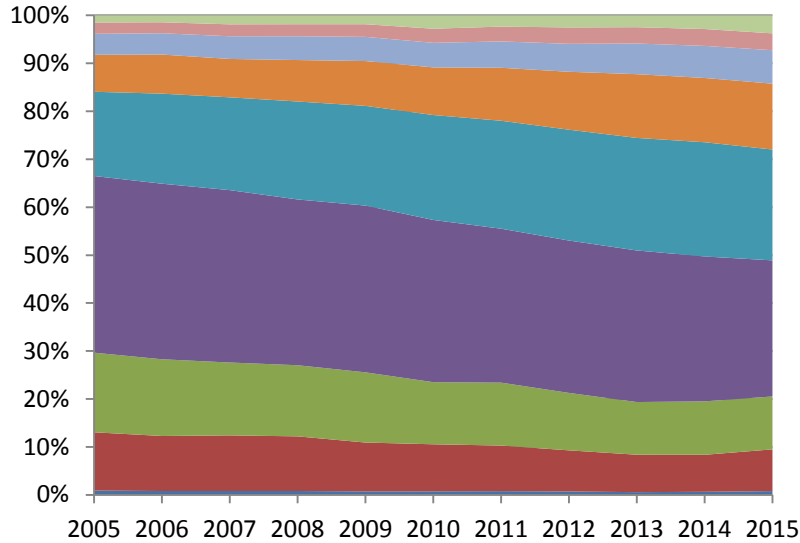
Typical Client

- Female (95%)
- Age 20-24 years (28%)
- White, non-Hispanic (59%)
- Income at or below 100% of the Federal Poverty Level (61%)
- Uninsured (38%)
- Used a contraceptive method (89% of Women, 93% of Men)
 - Highly Effective Method (73%)
- Oral contraceptives (38%) were the most popular



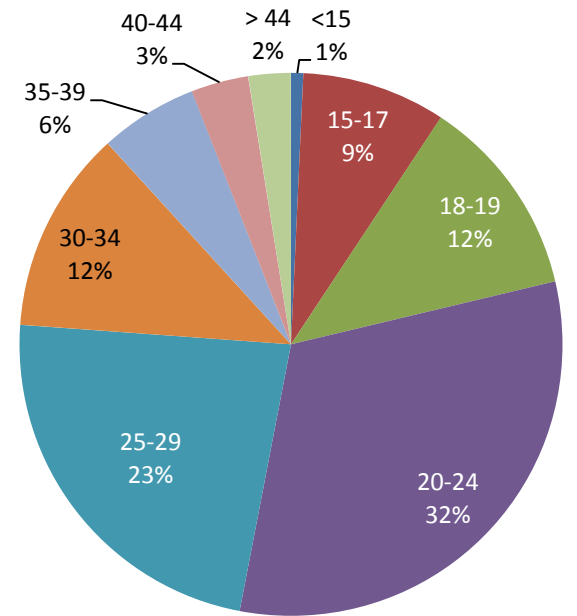
Client Age

2005-2015

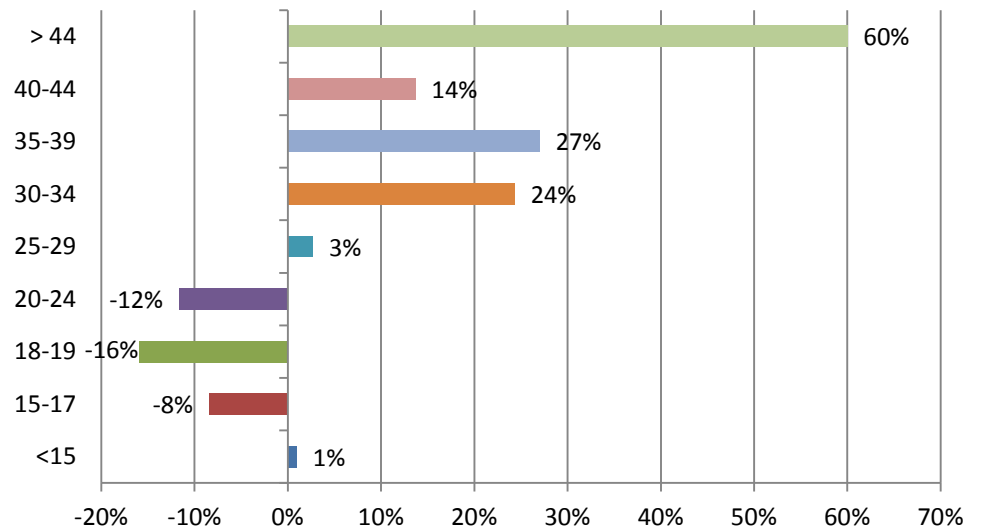


2015

- > 44
- 40-44
- 35-39
- 30-34
- 25-29
- 20-24
- 18-19
- 15-17
- <15

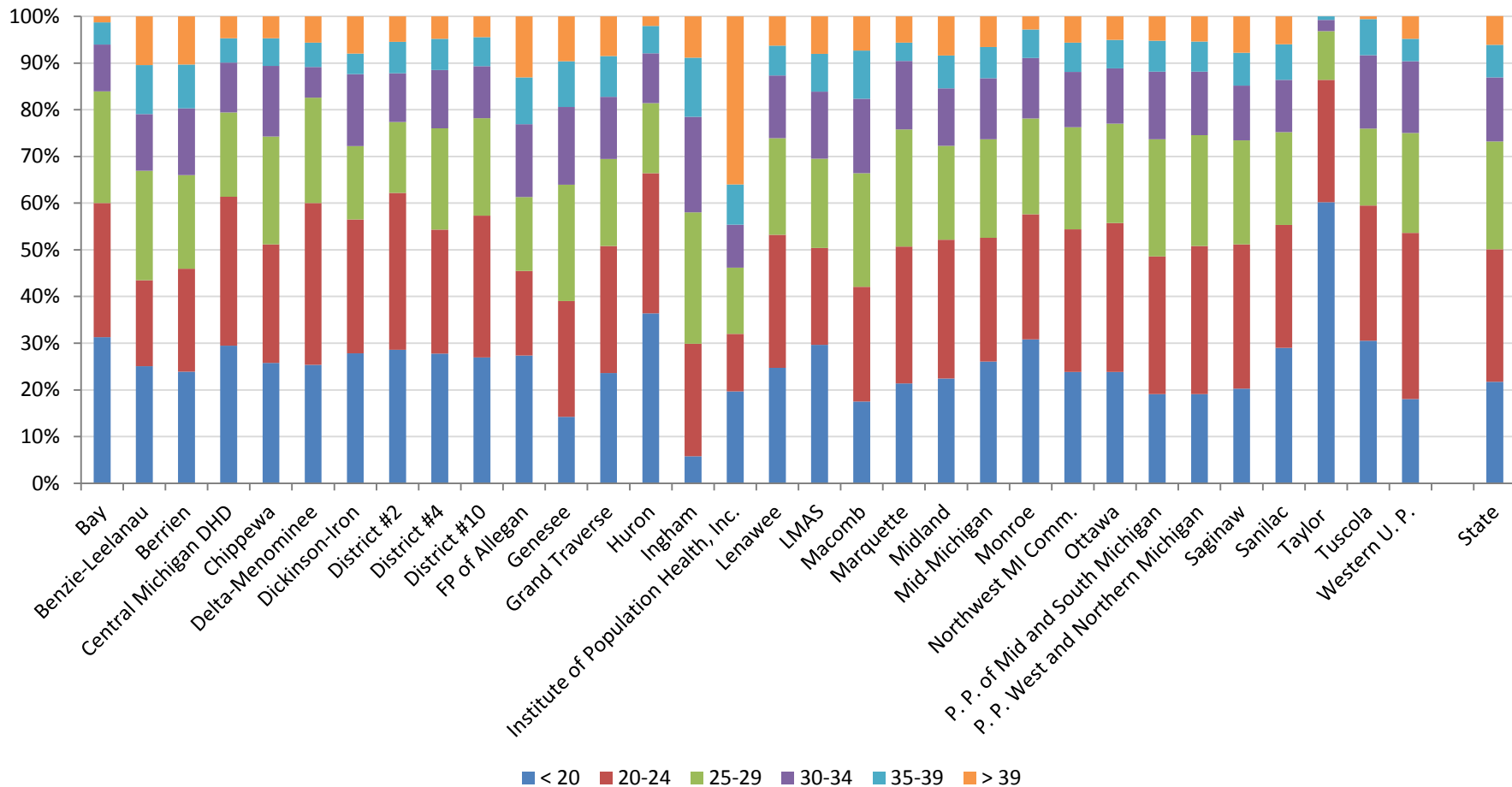


Percent change in the client age distribution, 2011-2015

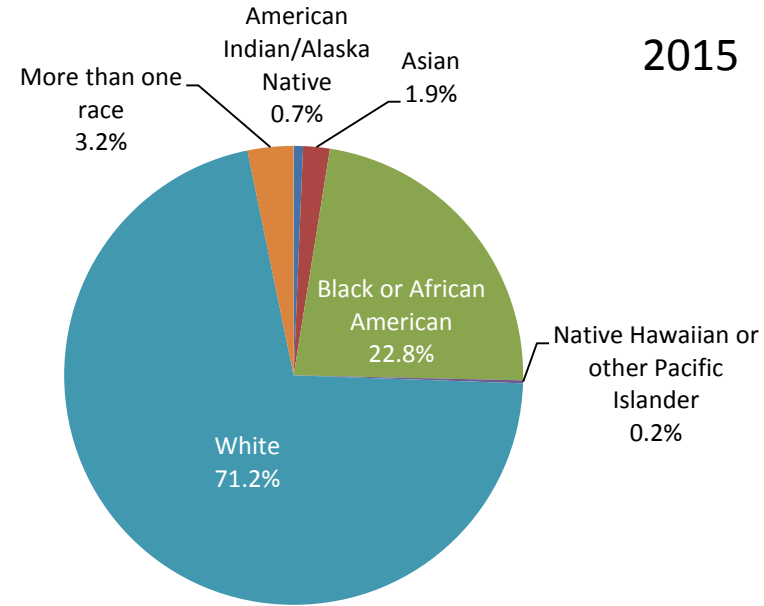
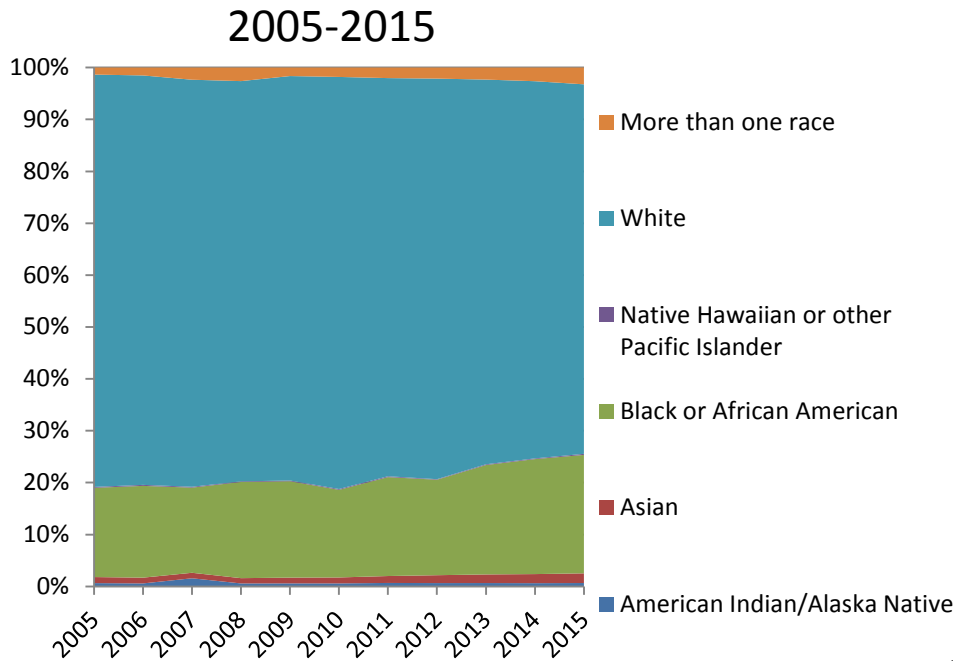


Source: MI FPAR, 2005 - 2015

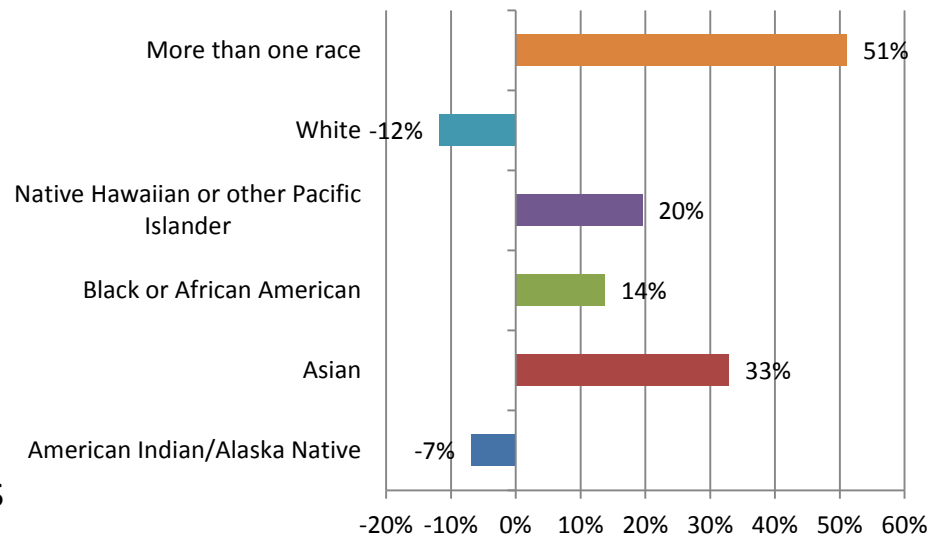
Distribution of age, Michigan Family Planning Program, FPAR 2015



Client Race



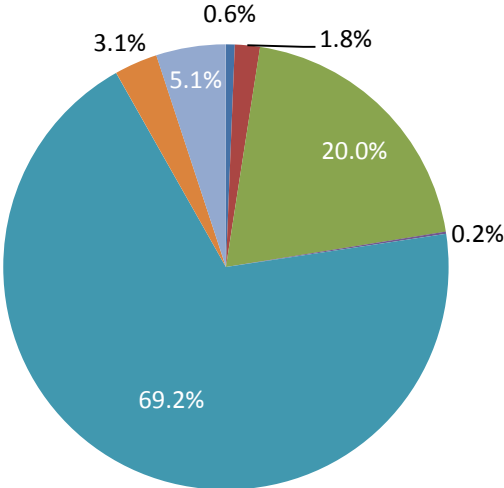
Percent change in the client race distribution, 2011-2015



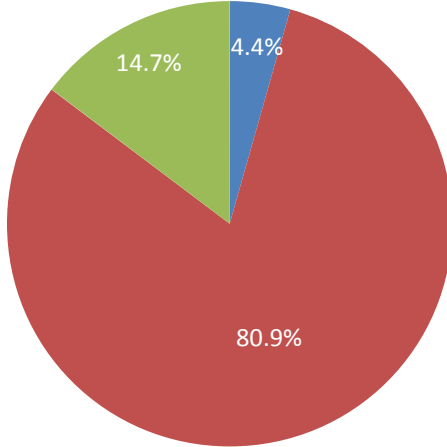
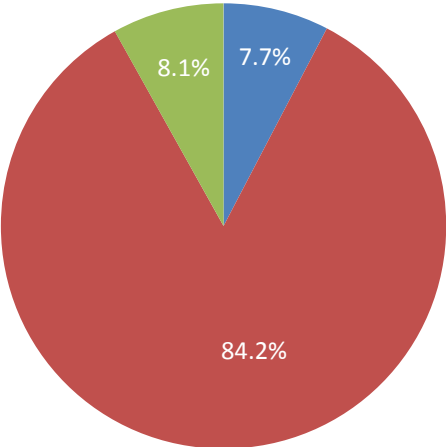
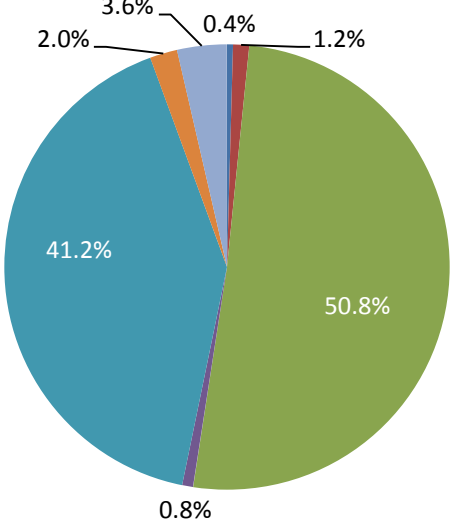
Source: MI FPAR, 2005 – 2015, Excludes unknown

Race/Ethnicity among MI Family Planning Users, FPAR 2015

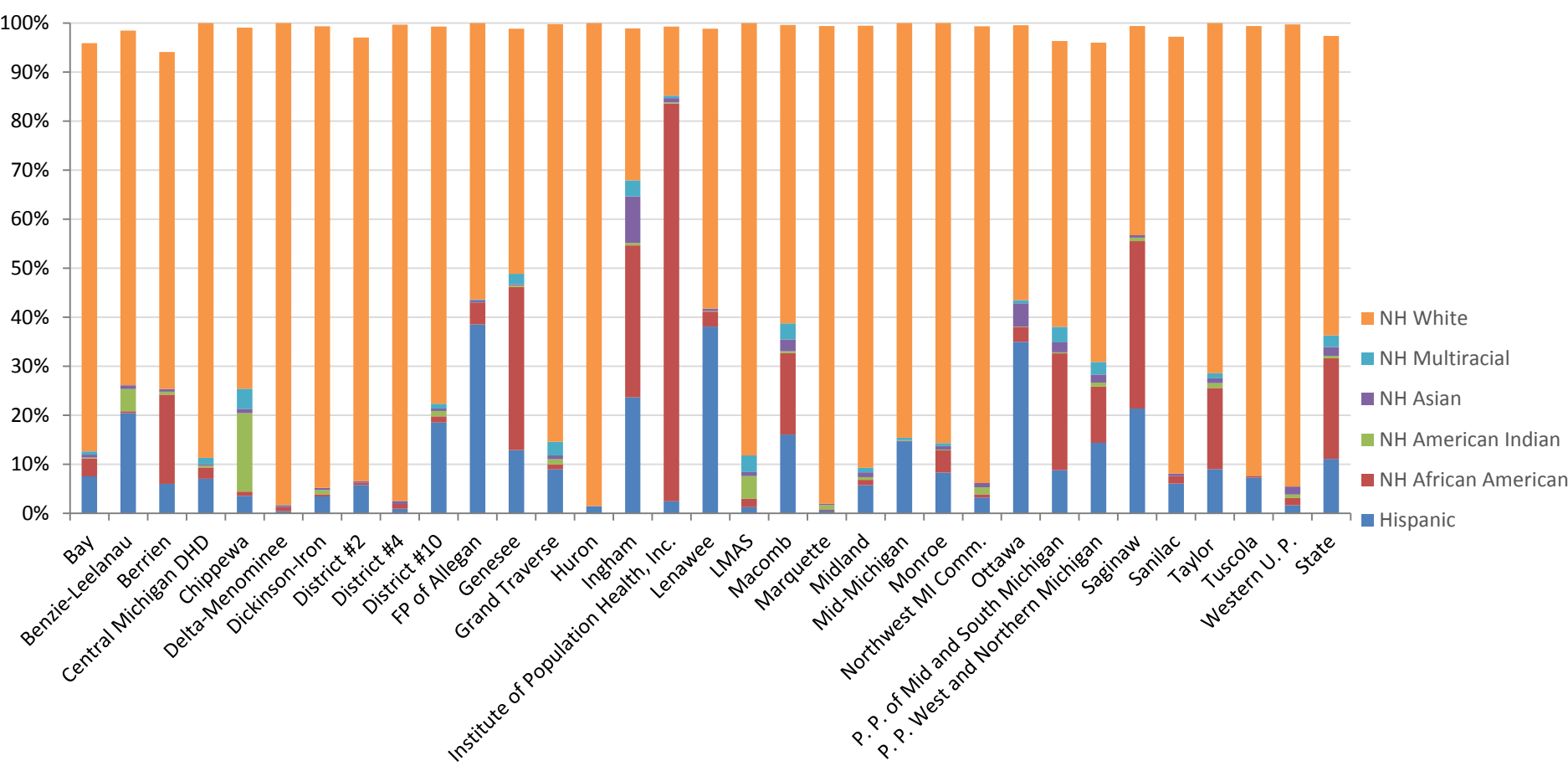
Female Clients



Male Clients



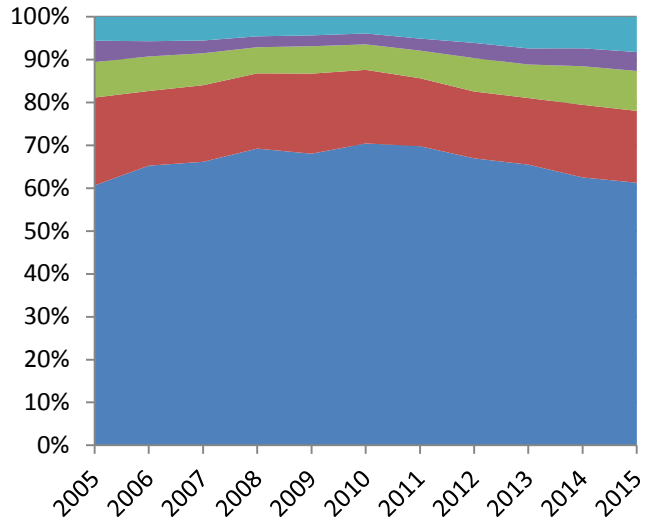
Race/Ethnicity among MI Family Planning Users, FPAR 2015



Excludes: Unknown/not reported. Small Cells not suppressed

Client Income

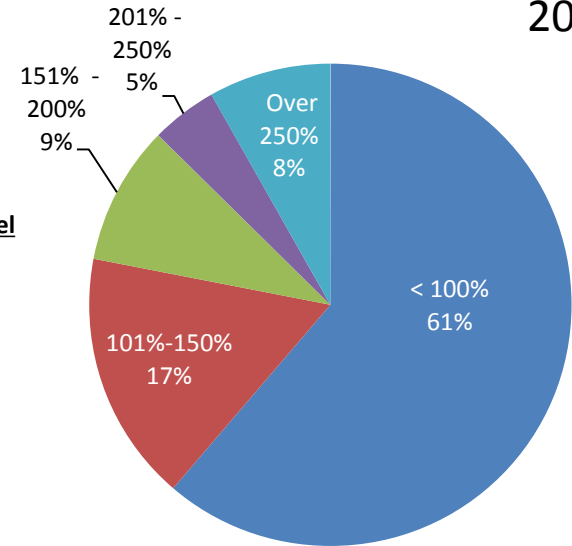
2005-2015



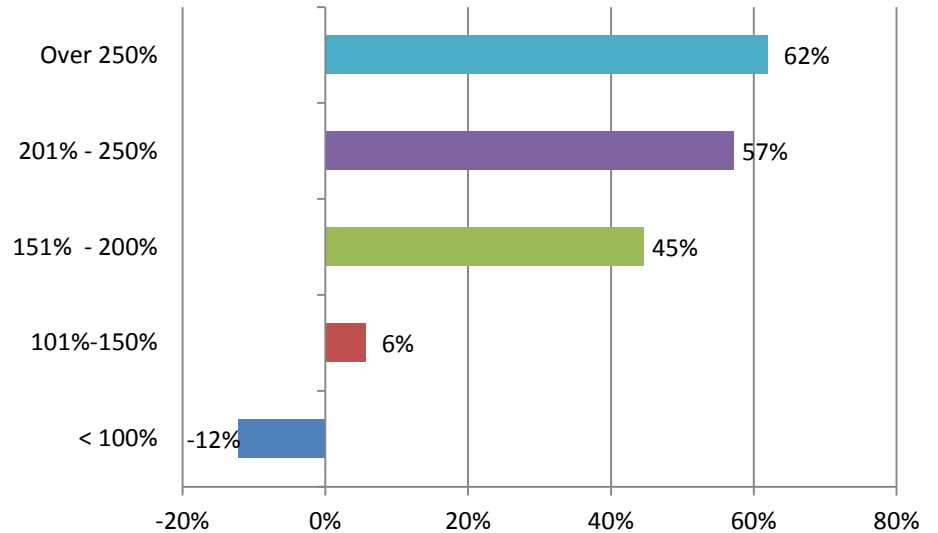
Percent of the Federal Poverty Level

- Over 250%
- 201% - 250%
- 151% - 200%
- 101%-150%
- < 100%

2015

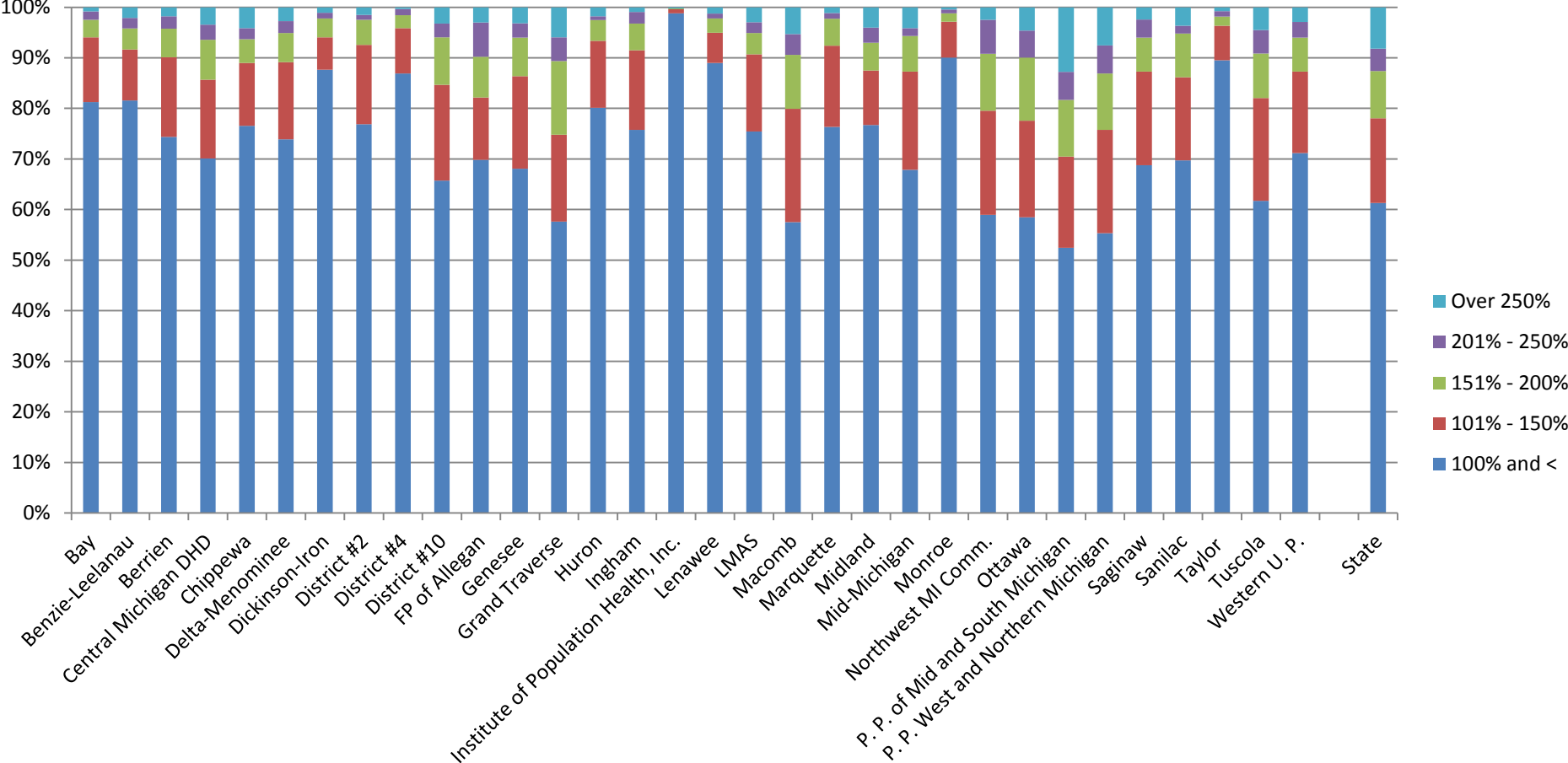


Percent change in the client income distribution, 2011-2015



Source: MI FPAR, 2005 - 2015

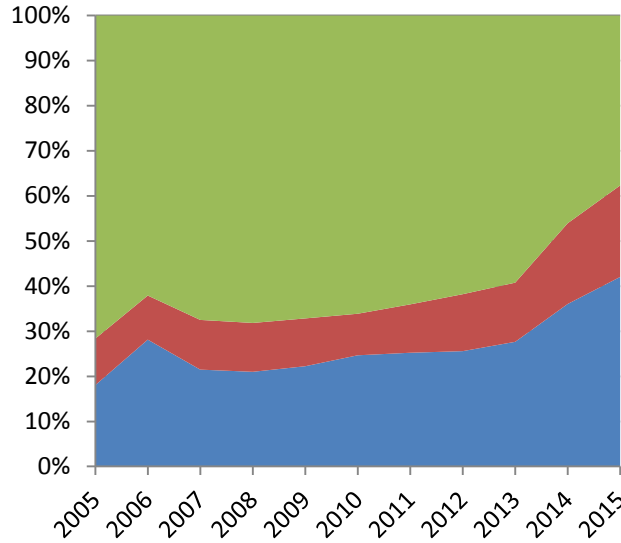
Income as a Percent of the Federal Poverty Level, MI Family Planning Users, FPAR 2015



Small Cells not suppressed

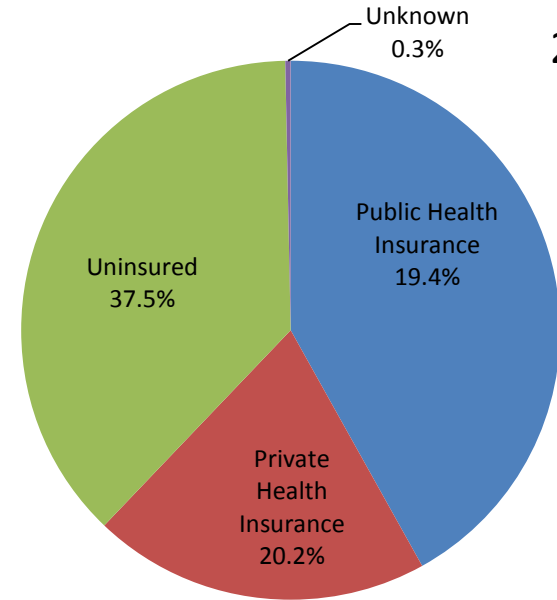
Client Insurance

2005-2015

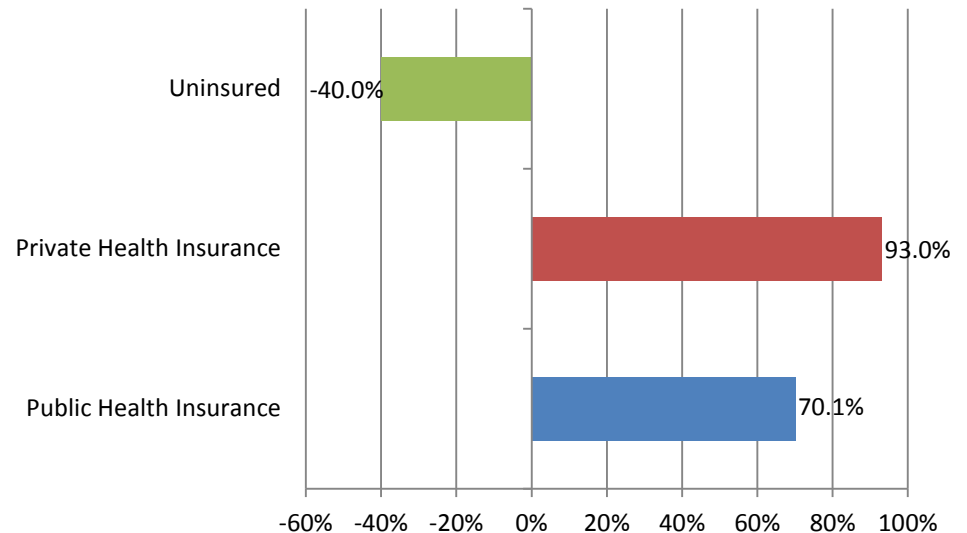


- Uninsured
- Private Health Insurance
- Public Health Insurance

2015

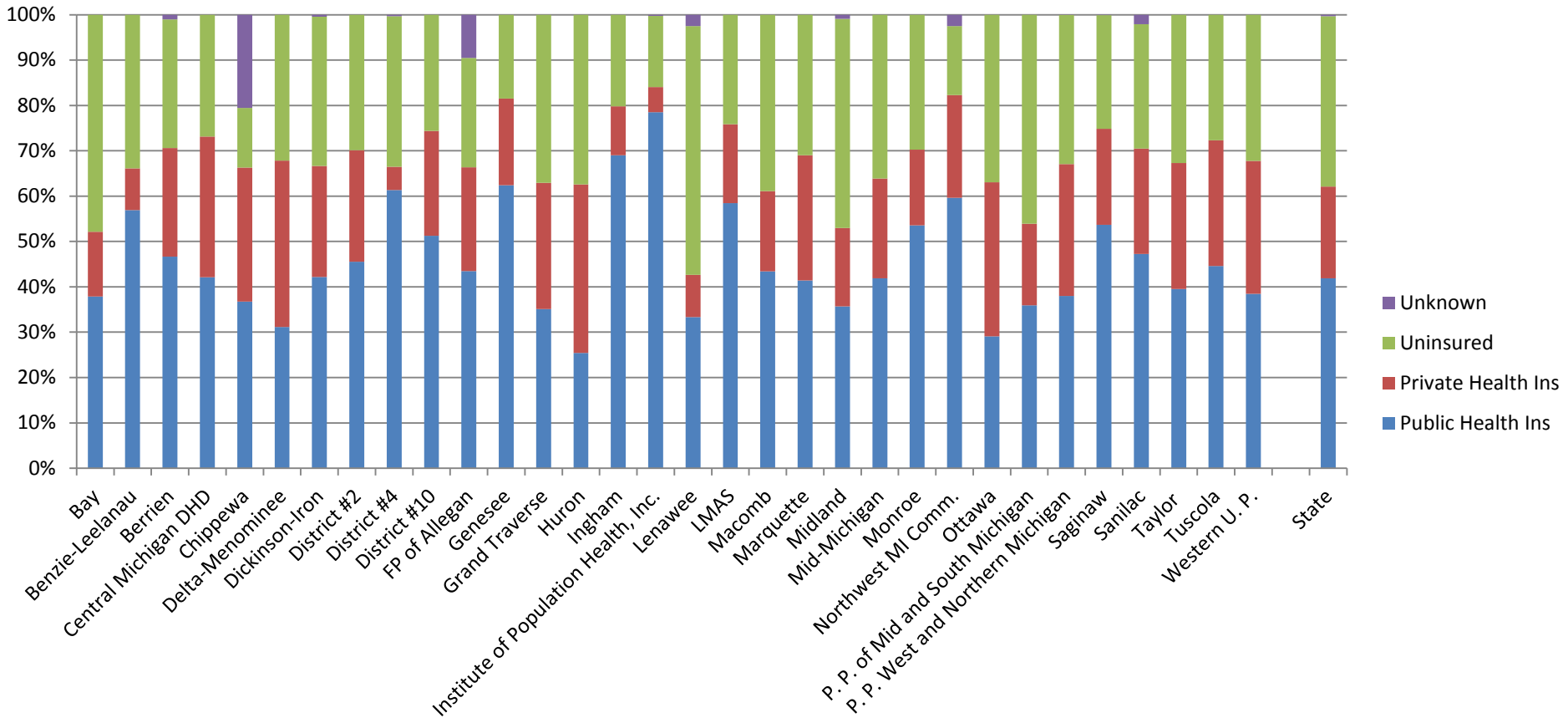


Percent change in the client insurance distribution, 2011-2015



Source: MI FPAR, 2005 - 2015

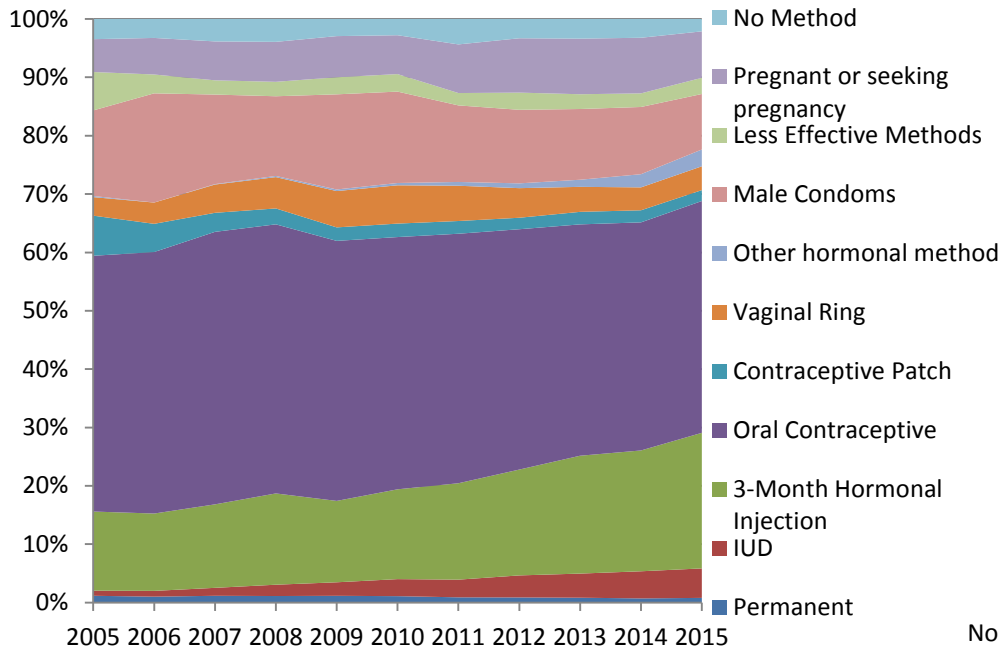
Insurance, MI Family Planning Clients, FPAR 2015



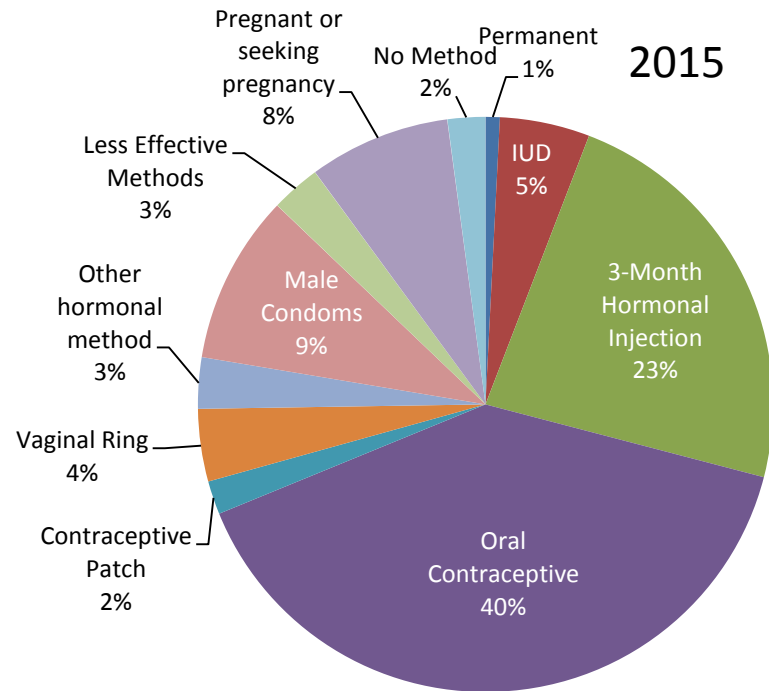
Small Cells not suppressed

Contraceptive Methods, Females

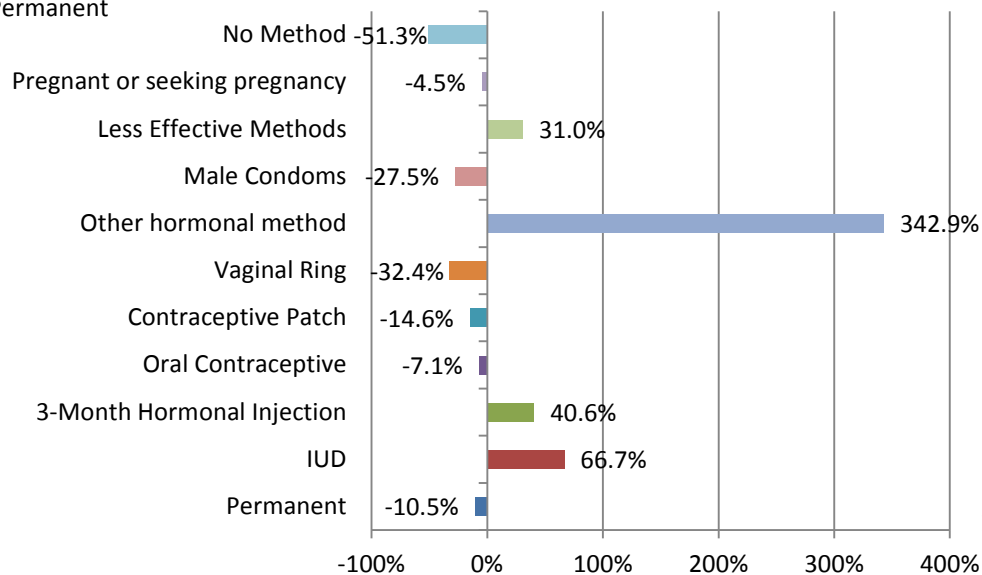
2005-2015



2015

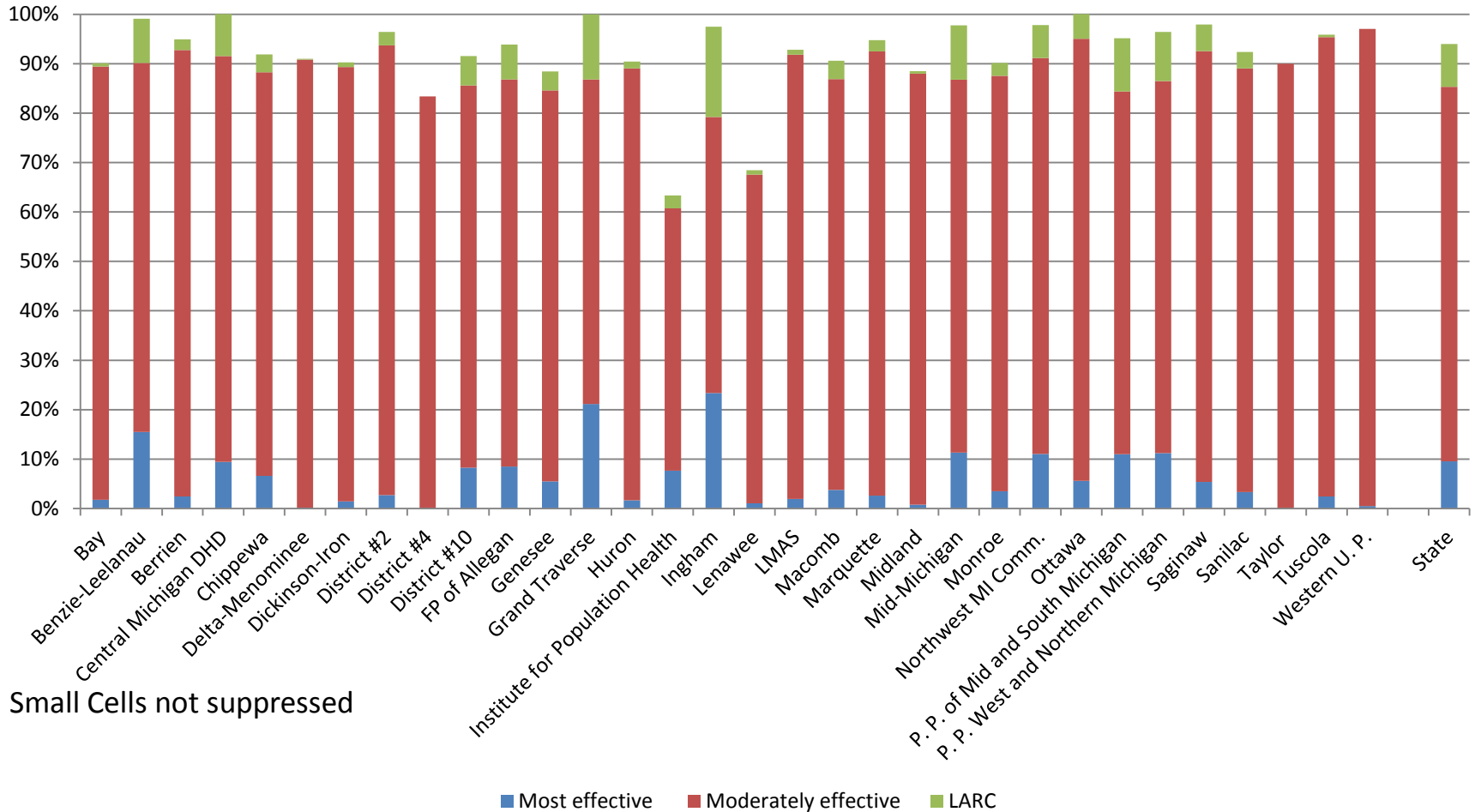


Percent change in the contraceptive method distribution, 2011-2015



Source: MI FPAR, 2005 - 2015

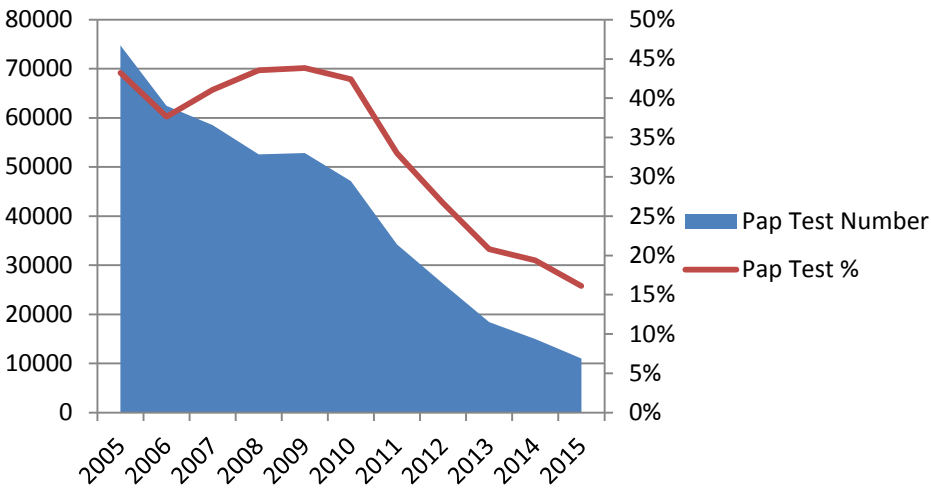
Contraceptive Methods, Females, FPAR 2015



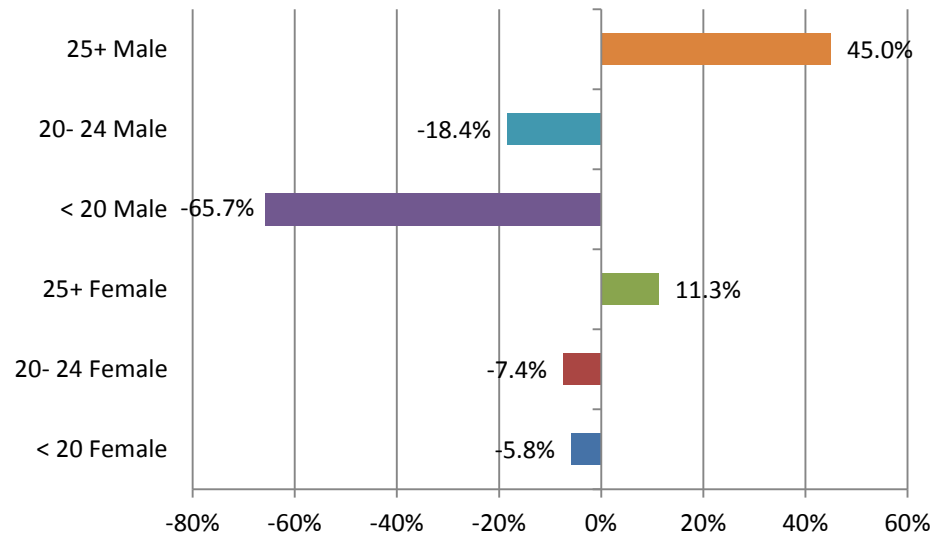
Methods were categorized based on The Office of Population Affairs (OPA) methods.
 Most effective methods include female sterilization, vasectomy, implants, or intrauterine devices (IUD)
 Moderately effective methods include injectables, oral pills, patch, ring, or diaphragm
 LARC methods include contraceptive implants, IUD

Screening Services 2005-2015

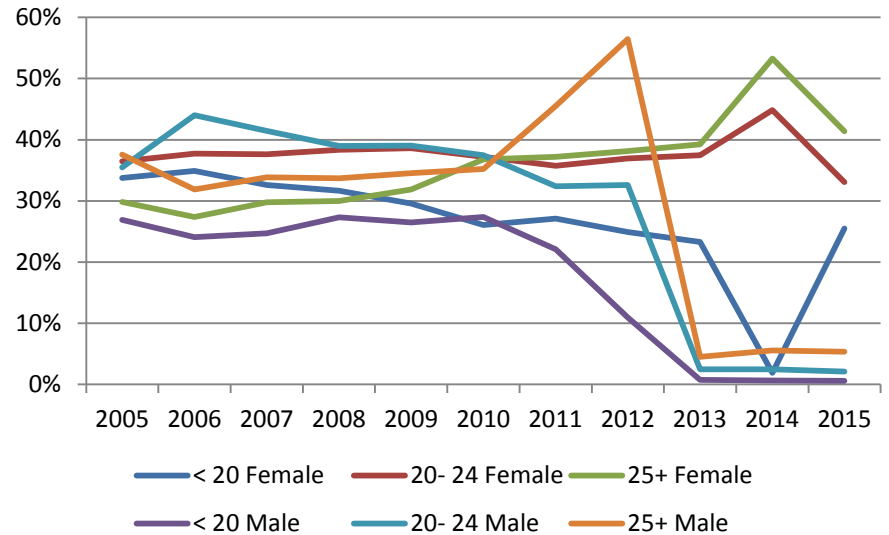
Unduplicated Pap Tests among female clients



Percent change in the screening services distribution, 2011-2015

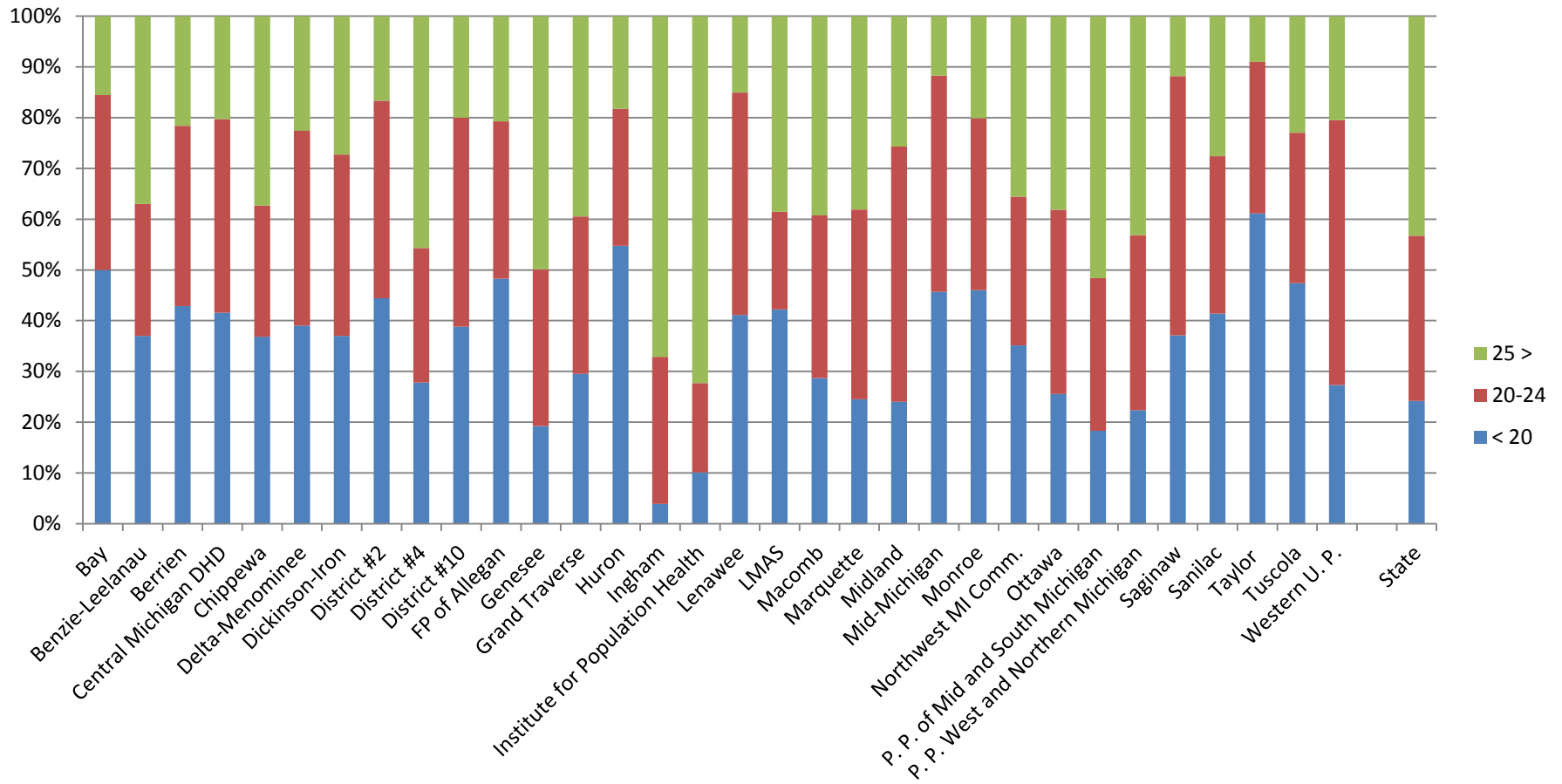


Distribution of age among clients tested for Chlamydia



Source: MI FPAR, 2005 - 2015

Age distribution of Female Family Planning Clients tested for Chlamydia, FPAR 2015



Small Cells not suppressed

Acknowledgments

- Michigan Family Planning program staff, local agency coordinators, health professionals and clerical staff