



# MI Flu Focus

## Influenza Surveillance Updates

### Bureaus of Epidemiology and Laboratories



Editor: Jalyn Ingalls, MA

[IngallsJ@michigan.gov](mailto:IngallsJ@michigan.gov)

December 27, 2017

Vol. 15; No. 10

### Influenza Surveillance Report for the Week Ending December 16, 2017

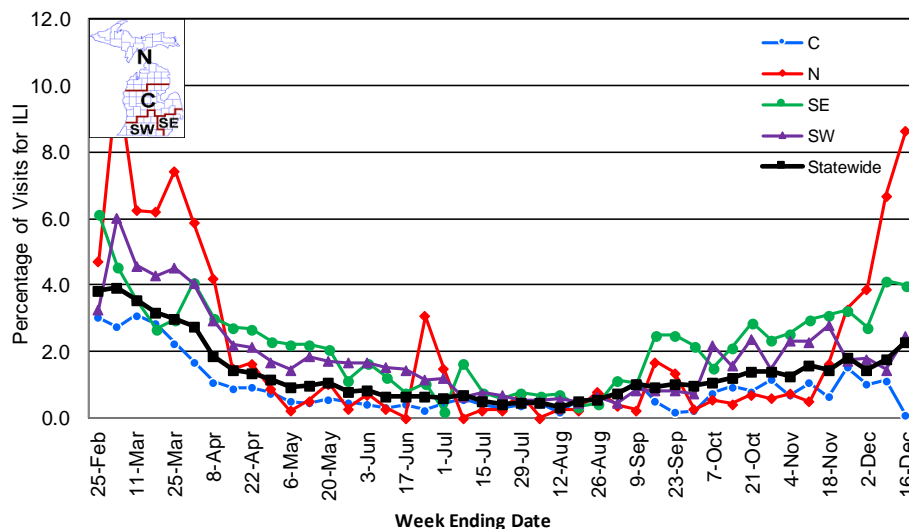
**MI's Influenza Activity Level:**  
**Regional**

**Updates of Interest:** As a follow up to the 2016 NFID College Influenza Stakeholder Summit, an online survey served as a next step in better understanding the key barriers and attitudes of college students related to flu and flu prevention. See FluBytes on page 3 for more information.

#### Sentinel Provider Surveillance

The proportion of visits due to influenza-like illness (ILI) increased to 2.3% overall, which is above the regional baseline of 1.8%. A total of 196 visits due to ILI were reported out of 8,521 office visits. Please note: These rates may change as additional reports are received.

Percentage of Visits for Influenza-like Illness (ILI) Reported by Sentinel Providers, Statewide and Regions 2016-17 and 2017-18 Flu Seasons



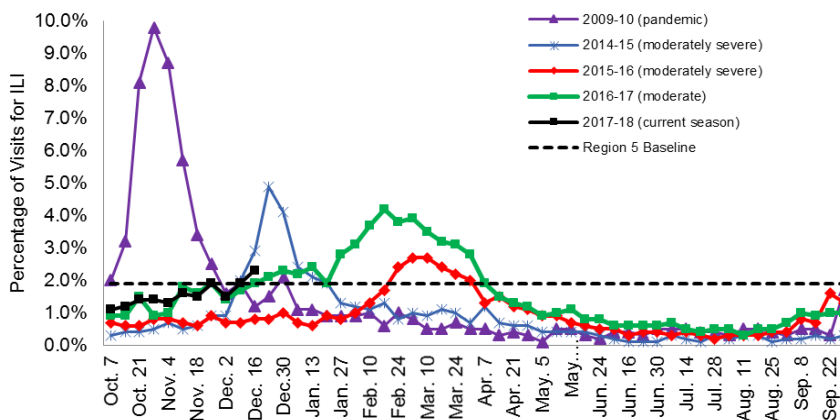
#### Number of Reports by Region

(27 total):

- C (8)
- N (2)
- SE (12)
- SW (5)

**National Surveillance:** In the United States, 3.5% of outpatient visits were due to influenza-like illness, which is above the national baseline of 2.2%.

Percentage of Visits for Influenza-like Illness (ILI) Reported by the US Outpatient Influenza-like Illness Surveillance Network (ILINet): Michigan, Select Seasons



**Become a Sentinel Provider!** As part of pandemic influenza surveillance, CDC and MDHHS highly encourage year-round participation from all sentinel providers. New practices are encouraged to join the sentinel surveillance program today! Contact Jalyn Ingalls ([IngallsJ@michigan.gov](mailto:IngallsJ@michigan.gov)) for more information.

Additional information is in the weekly FluView reports available at: [www.cdc.gov/flu/weekly](http://www.cdc.gov/flu/weekly).

#### Influenza-associated Pediatric Mortality

No pediatric influenza deaths have been reported to MDHHS during the 2017-2018 flu season. Nationally, nine (9) influenza-associated pediatric deaths have been reported thus far for the 2017-2018 flu season.

## Hospital Surveillance

The CDC Influenza Hospitalization Surveillance Project provides population-based rates of hospitalization due to severe influenza-related illness through active surveillance and chart review of lab-confirmed cases from Oct. 1, 2017 until Apr. 30, 2018, for Clinton, Eaton, Ingham, Genesee, and Washtenaw counties. Since Oct. 1, there have been **7 pediatric and 44 adult** influenza-related hospitalizations reported in the catchment area for the 2017-2018 season. Note: Cumulative totals may change from week to week as cases are reviewed to determine if they meet the case definition.

The MDHHS Influenza Sentinel Hospital Network monitors influenza-related admissions reported voluntarily by hospitals statewide, with 9 facilities (N, C, SE & SW) reporting during this time period. Results for the 2017-18 flu season are listed in the table below. Additional hospitals are encouraged to join; please contact Seth Eckel at [eckels1@michigan.gov](mailto:eckels1@michigan.gov).

Age Group	New Flu Hospitalizations Reported	Total 2017-18 Flu Hospitalizations Reported to Date
0-4 years	3 (N)	4 (N)
5-17 years	0	1 (N)
18-49 years	3 (2SE, 1SW)	5 (4SE, 1SW)
50-64 years	5 (1C, 3SE, 1SW)	13 (4N, 1C, 7SE, 1SW)
65 years & older	12 (4N, 5SE, 3SW)	32 (10N, 2C, 13SE, 7SW)
<b>Total</b>	<b>23 (7N, 1C, 10SE, 5SW)</b>	<b>55 (19N, 3C, 24SE, 9SW)</b>

## Laboratory Surveillance

MDHHS Bureau of Laboratories reported 51 new positive influenza results (38 A/H3, 3 A/H1 & 10 flu B) during this time period. A total of 169 positive influenza results have been reported for the 2017-18 season. Influenza results for the 2017-18 season are in the table below.

Respiratory Virus	# Positive Respiratory Virus Results by Region				Total	# Specimens Antigenically Characterized	# Tested for Antiviral Resistance
	C	N	SE	SW			# Resistant / Total # Tested
2009 A/H1N1pdm			6	1	7		
Influenza A/H3	40	16	64	15	135		
Influenza B	4	4	17	2	27		
A / unsubtypeable							
LAIV recovery							

In addition, 10 sentinel clinical labs (2SE, 2SW, 6C, 0N) reported influenza testing results. All ten (10) labs (SE, SW, C) reported influenza A activity, ranging from low to moderately elevated or further increasing. Seven (7) labs (SE, SW, C) reported sporadic or low influenza B activity. Four (4) labs (SE, SW, C) reported low or slightly increased Parainfluenza activity. Nine (9) labs (SE, SW, C) reported low to moderate RSV activity, with most sites showing continued increases. Three (3) labs (SE, SW, C) reported low Adenovirus activity. Three (3) labs (SE, SW, C) reported low hMPV activity. Testing volumes are showing a robust upward trend with most sites at moderate levels and some approaching high levels.

## Congregate Setting Outbreaks of Viral Respiratory Illness

There were 6 new respiratory outbreaks (2N, 3C, 1SW) reported to MDHHS during this time period, all of which had laboratory-confirmed influenza. Respiratory facility outbreaks for the 2017-2018 season are listed in the table below.

Facility Type	C	N	SE	SW	Total
K-12 School	2				<b>2</b>
Long-term Care / Assisted Living Facility	10	5	1	1	<b>17</b>
Healthcare Facility					
Daycare	1				<b>1</b>
Homeless Shelter					
<b>Total</b>	<b>13</b>	<b>5</b>	<b>1</b>	<b>1</b>	<b>20</b>



## WEBINAR: PRESENTING FLU FACTS AND OVERCOMING VACCINE HESITANCY

On January 10, 2018 the National Influenza Vaccination Disparities Partnership will host a webinar, "Talking to Patients about Flu: Sharing Facts and Addressing Misconceptions and Hesitancy." The webinar will address current flu vaccine recommendations and ways to talk to family and patients about flu vaccine. Presenter Dr. Mark Sawyer will give an update on the current flu season and recommendations from the Advisory Committee on Immunization Practices (ACIP).

The webinar is scheduled for January 10, 2018 from 2:00-3:00pm (ET). Advanced [registration](#) is required.

## EARLY SEASON FLU VACCINATION COVERAGE ESTIMATES: 2017-2018 FLU SEASON

In observance of National Influenza Vaccination Week (NIVW), CDC released [early season flu vaccination coverage estimates](#) for the U.S. for the 2017-2018 flu season, which are summarized below:

- Estimated 38.6% of people aged 6 months and older reported being vaccinated as of November 2017.
  - Early season coverage for children 6 months – 17 years was 38.8%.
  - Early season coverage for adults aged 18 years and older was 38.5%.
- Early season estimates show that 67.6% of healthcare personnel have received their flu vaccine
- Early season estimates show that 35.6% of pregnant women have received their flu vaccine.
  - Survey methodology changed for pregnant women, which changed the characteristics of the survey sample. Comparisons of vaccination coverage from November 2017 to previous years cannot be made.
- Final 2017-2018 flu season vaccination coverage estimates will be available in September 2018.

More details about the early season 2017-2018 flu season vaccination coverage estimates are available online, including detailed coverage estimates for the [general population](#), [healthcare personnel](#), and [pregnant women](#).

Archived editions of FluBytes are available [here](#) and MI Flu Focus archives are [here](#).

## NATIONAL FOUNDATION FOR INFECTIOUS DISEASES NATIONAL SURVEY ON COLLEGE STUDENTS & FLU

As a follow up to the 2016 NFID College Influenza Stakeholder Summit, an online survey conducted by Harris Poll on behalf of NFID served as a next step in better understanding the key barriers and attitudes of college students related to flu and flu prevention. Access to the vaccine at low or no cost (61%) and incentives, such as free food or gift cards (61%), were shown to have the greatest impact on student decision-making regarding flu vaccination. Please share the [press release](#) and the [infographic](#) with your partners.

## INFLUENZA-RELATED JOURNAL ARTICLES

- [Association of broad- vs narrow-spectrum antibiotics with treatment failure, adverse events, and quality of life in children with acute respiratory tract infections](#)
- [Effect of influenza A virus infection on natural and adaptive cellular immunity](#)
- [Genetic and antigenic divergence in the influenza A\(H3N2\) virus circulating between 2016 and 2017 in Thailand](#)

## OTHER INFLUENZA-RELATED NEWS

- [States' report card highlights threat of weather, infectious diseases](#)
- [Outpatient flu visits spike as more states note high activity](#)
- [Philippines reports 4th H5N6 avian influenza outbreak since August](#)
- [NIH lifts ban on research that could make deadly viruses even worse](#)

## AVIAN INFLUENZA INTERNATIONAL NEWS

- [Netherlands, Italy report new avian flu outbreaks](#)
- [As 2 nations report more avian flu, USDA alters reimbursement](#)

## FLU WEBSITES

[www.michigan.gov/flu](http://www.michigan.gov/flu)  
[www.cdc.gov/flu](http://www.cdc.gov/flu)  
[www.flu.gov](http://www.flu.gov)  
<http://vaccine.healthmap.org/>

For questions or to be added to the distribution list, please contact Jalyn Ingalls at [ingallsj@michigan.gov](mailto:ingallsj@michigan.gov)

### MDHHS Contributors

Bureau of Epidemiology – S. Bidol, MPH, J. Ingalls, MA, S. Eckel, MPH  
Bureau of Labs – B. Robeson, MT, V. Vavricka, MS