

*World TB Day Conference
Migration & TB*

***TB Testing
Requirements for Licensed Facilities***

Bureau of Community & Health Systems (BCHS)

Presenters

Larry Horvath

Teri Dyke, MSN, RN

Tom Bissonnette, MS, RN

Disclosures Oversight

- None of the speakers or planners involved in this activity has any relevant conflict of interest.
- Approval status does not imply endorsement by the provider, ONA, MSMS, or any products displayed in conjunction with an activity.
- The use of trade names and commercial sources during this presentation is for identification only, and does not imply endorsement.
- No commercial support has been received for this program.

Regulatory Oversight

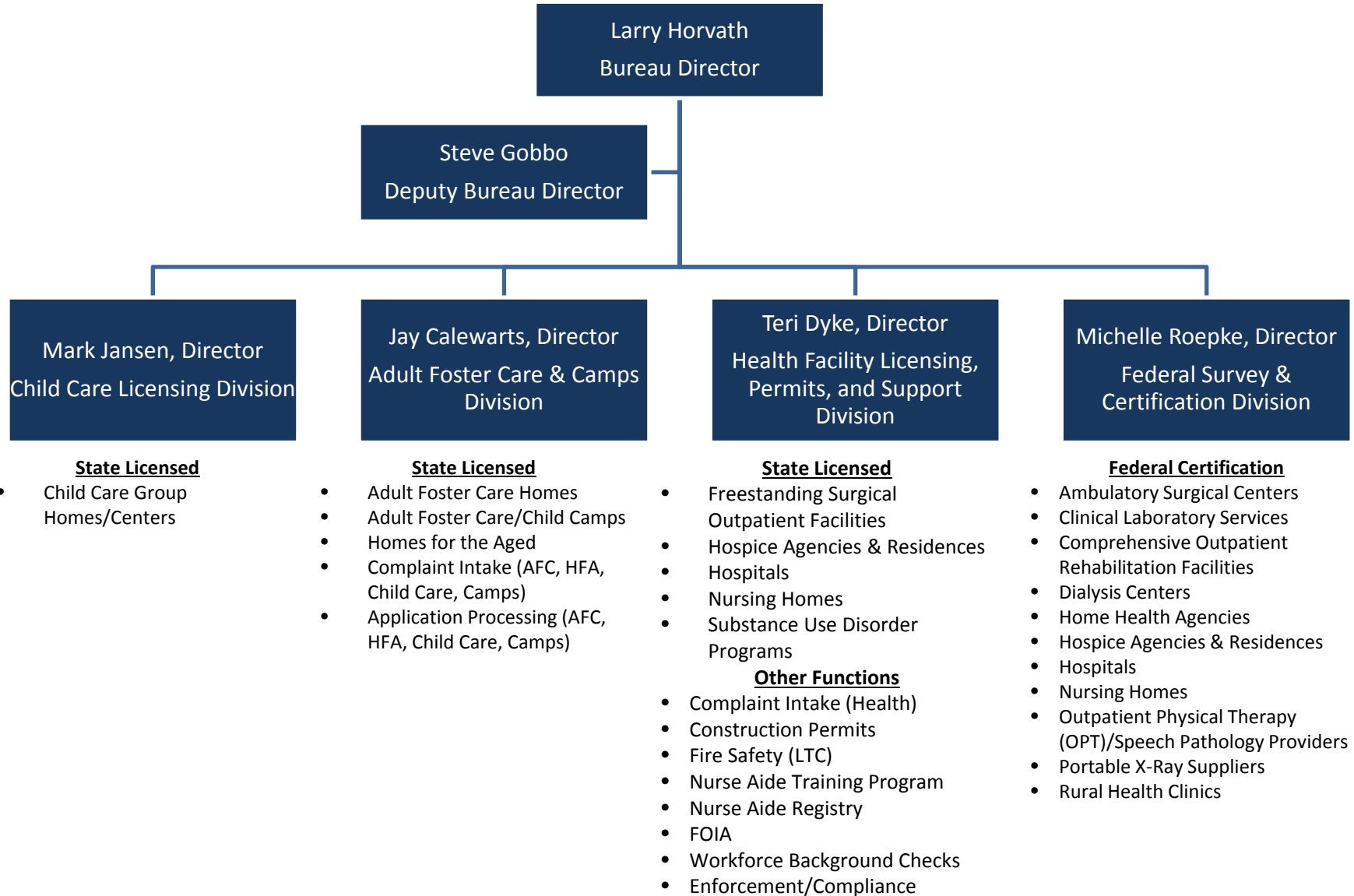
Bureau of Community & Health Systems (BCHS) - Effective July 6, 2015 Provides:

- State Licensing
 - Health Facilities & Agencies (including Homes for the Aged)
 - Life Safety Code Inspections of Long Term Care Facilities
 - Substance Use Disorder Programs
 - Child Care Homes & Centers
 - Adult Foster Care Homes

BCHS Also Provides:

- Federal Certification of Providers and Suppliers on Behalf of the Centers for Medicare and Medicaid Services (CMS)
- Plan Review/Construction Permits for State Licensed Health Facilities
- Workforce Background Checks
- Nurse Aide Training Program/Nurse Aide Registry (February 1, 2016)

BCHS Organizational Overview



Michigan Covered Providers

(As of December 29, 2015)

** Some federal oversight for organ procurement organizations (1) and federally qualified health centers (215).*

No. of Providers	Type
9,876	Child Care Homes & Centers
8,445	Clinical Laboratory Services (CLIA)
4,248	Adult Foster Care Homes
1,300	Substance Use Disorder Programs
1,061	Adult Foster Care/Child Care Camps
616	Home Health Agencies
460	Nursing Homes/LTC Facilities
234	Homes for the Aged
196	Dialysis Centers (ESRD)
169	Hospitals
168	Rural Health Clinics
160	Outpatient Physical Therapy (OPT)/Speech Pathology
141	Hospice Agencies
136	Freestanding Surgical Outpatient Facilities/ASC
58	Inpatient Psychiatric Hospitals/Units
18	Hospice Residences
9	Organ Transplant Facilities
9	Portable X-Ray Providers
5	Community Mental Health Centers
4	Comprehensive Outpatient Rehab Facilities (CORF)

**BCHS
 State/Federal
 Oversight by
 Covered
 Providers**

State	Federal	Type
YES	NO	Adult Foster Care Homes
YES	NO	Adult Foster Care/Child Care Camps
YES	NO	Child Care Centers
YES	NO	Homes for the Aged
YES	NO	Substance Use Disorder Programs
YES	YES	Freestanding Surgical Outpatient Facilities/ASC
YES	YES	Hospice Agencies
YES	YES	Hospice Residences
YES	YES	Hospitals
YES	YES	Inpatient Psychiatric Hospitals/Units
YES	YES	Nursing Homes/LTC Facilities
NO	YES	Clinical Laboratory Services (CLIA)
NO	YES	Community Mental Health Centers
NO	YES	Comprehensive Outpatient Rehab Facilities (CORF)
NO	YES	Dialysis Centers (ESRD)
NO	YES	Home Health Agencies
NO	YES	Organ Transplant Facilities
NO	YES	Outpatient Physical Therapy (OPT)/Speech Pathology
NO	YES	Portable X-Ray Providers
NO	YES	Rural Health Clinics (RHC)

General Overview

State Licensure

- Initial licensure
- Routine surveys/inspections
- Complaints
- Renewal
- Enforcement

Federal Certification

- Initial certification
- Routine recertification surveys
- Complaints
- Recertification
- Enforcement

Web Change

www.michigan.gov/bchs

Bureau of Community and Health Systems

The Bureau of Community and Health Systems performs state licensing and federal certification regulatory duties as required by state and federal laws. The bureau programs are designed to protect the health, safety and welfare of individuals receiving care and services through various covered licensed/certified provider types. Activities include issuance of state licenses and construction permits, routine inspections, complaint investigations, enforcement of state and federal requirements, and a host of other regulatory activities. The bureau covers more than 20 various provider types.



- Covered Providers
- Look Up a License
- Contact Us
- Request Documents (FOIA)
- File a Complaint
- Spotlight & News
- Plan Review & Construction Permits
- Workforce Background Checks
- Nurse Aide Training Program

Bureau of Community and Health Systems – Covered Providers

The Bureau of Community and Health Systems performs state licensing and federal certification regulatory duties as required by state and federal laws. This page is designed to assist providers through the state licensing and federal certification processes. We hope you find this page user-friendly to find the information needed and easy to navigate.



- Adult Foster Care Homes
- Camps Adult Foster Care & Child
- Child Care Homes & Centers
- Clinical Laboratory Services (CLIA)
- Comprehensive Outpatient Rehab Facilities (CORF)
- Dialysis Centers (ESRD)
- Freestanding Surgical Outpatient Facilities (FSOF/ASC)
- Home Health Agencies
- Homes for the Aged
- Hospice Agencies & Residences
- Hospitals
- Psychiatric Hospitals & Units
- Nursing Homes
- Outpatient Physical Therapy (OPT)/ Speech Pathology
- Portable X-Ray Providers
- Substance Use Disorder Programs
- Rural Health Clinics (RHC)
-

Presentation Objectives

- Discuss recent changes made by LARA in TB testing requirements for healthcare facilities.
- Describe how these changes may affect employee and patient TB screening in the workplace.

Proposed TB Requirements

- **Administrative Rules**
 - Use the CDC's TB risk assessment* as a guide for requirements for routine TB screening
 - Eliminated the requirement for admission chest x-ray along with the History & Physical
 - Maintain record of baseline screening for communicable disease for employee

Frequently Asked Questions

How often to screen employees and patients?

- Baseline, and then according to the facility's risk assessment; Low, Medium and Ongoing transmission.

What to do if there is a positive TB test?

- Identify the source, isolate, N-95/mask patient notify Local Health Department, initiate contact tracing.

When to conduct TB risk assessments for your facility type?

- Annually, or when a cluster of conversions or an actual TB case

Resources

- Guideline for Preventing Transmission of Mycobacterium Tuberculosis in Healthcare Setting
http://www.cdc.gov/mmwr/preview/mmwrhtml/rr5417a1.htm?s_cid=rr5417a1_e
- **TB Risk Assessment form:
http://www.cdc.gov/tb/publications/guidelines/AppendixB_092706.pdf
- Prevention and control in Long-term care facilities
<http://www.cdc.gov/mmwr/preview/mmwrhtml/00001711.htm>
- State of Michigan Data and Statistics:
http://www.michigan.gov/mdhhs/0,5885,7-339-71550_5104_5281_46528_59091---,00.html

Questions & Answers

Bureau of Community and Health Systems

Ottawa Building, 1st Floor

611 W Ottawa Street

Lansing, MI 48909

Main Line: (517) 335-1980

www.michigan.gov/bchs

*Thank you for your efforts to provide quality health care
to Michigan residents!*