

# ASSET TEST CHANGES

EFFECTIVE DEC. 1, 2019

Determining whether Michiganders are eligible to receive food, cash, and emergency relief benefits.



The changes will lift asset limits and make them consistent in order to encourage low-income Michiganders to save, provide benefits more quickly and at lower administrative cost, and make Michigan more like other states. All programs still require applicants to have low incomes.

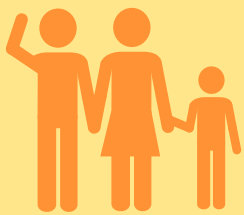
Asset limit increase  
from \$5,000 to

**\$15K**

## FOOD ASSISTANCE PROGRAM



## FAMILY INDEPENDENCE PROGRAM



Asset limit increase  
from \$3,000 to

**\$15K**

Asset limit  
increase from  
\$500 to

**\$15K**

## STATE EMERGENCY RELIEF



**RAISING ASSET LIMITS HELPS MICHIGANDERS MOVE TOWARD ECONOMIC STABILITY**

For more information, visit [Michigan.gov/MDHHSAssistance](https://Michigan.gov/MDHHSAssistance).