

How to Apply for COVID Relief Facility (CRF) Status Tier 1 and Tier 2 and Facility Capacity Change



IPRAT

Infection Prevention Resource and Assessment Team

The Michigan Department of Health and Human Services will not exclude from participation in, deny benefits of, or discriminate against any individual or group because of race, sex, religion, age, national origin, color, height, weight, marital status, partisan considerations, or a disability or genetic information that is unrelated to the person's eligibility.

THE FLOW

Apply for Tier 1 or Tier 2 CRF Status or Facility Capacity Change with application link

IPRAT Team scores the application and determines if a site visit, virtual visit, or application clarification is required.

IPRAT team member rescores applications and submits recommendations to either: LARA for Tier 2 applications or Public Health Administration (PHA) and Health and Aging Services Administration (HASA) for Approval.

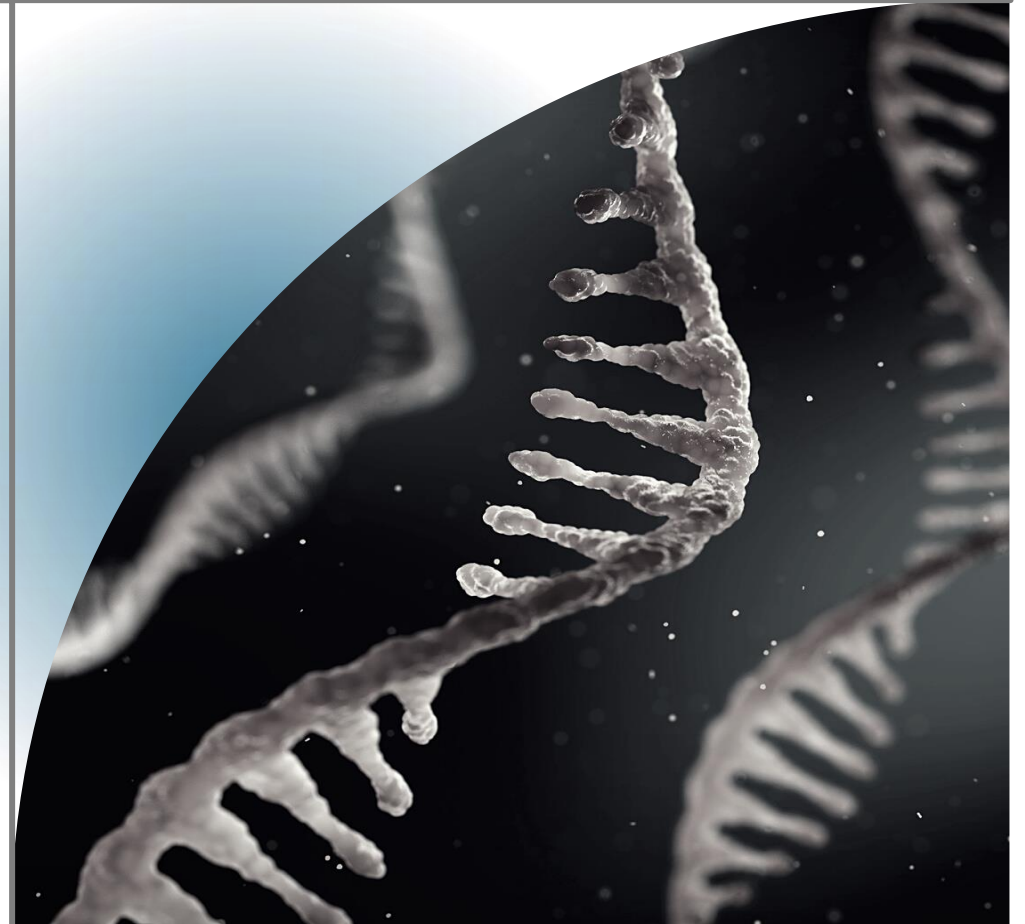
TIER 2 ONLY: Once a site/virtual visit is complete, LARA will inform IPRAT of their findings. IPRAT will then submit recommendations to PHA/HASA

PHA/HASA will send approval or denial of IPRAT recommendations to IPRAT. IPRAT will send determination letters to facilities.

TIER 1 and Tier 2 CRF Facilities

These facilities meet criteria established in PA 231 to care for asymptomatic or mildly ill COVID-positive residents who do not meet criteria for hospitalization or COVID Care Recovery Center.

- *CRF status allows resident to stay in their “home” while recovering in transmission-based precautions.*
- *IPRAT supports CRF with COVID unit set up, education, and questions.*



TIER 1

Application link is open!

MSA 21-40 criteria for CR Tier 1: Retain ONLY

- Facility is licensed by the Department of Licensing and Regulatory Affairs (LARA) as a Nursing Home; and
- Has a designated COVID-positive area (the designated area can include a unit, wing, or separate building) and
- Has dedicated/designated staff to COVID-positive area
- Has an adequate supply of Personal Protective Equipment (PPE); and
- Has adequate testing capabilities to comply at a minimum with guidelines set forth by the Michigan Department of Health and Human Services (MDHHS), the Centers for Disease Control and Prevention (CDC), and Centers for Medicare & Medicaid Services (CMS)

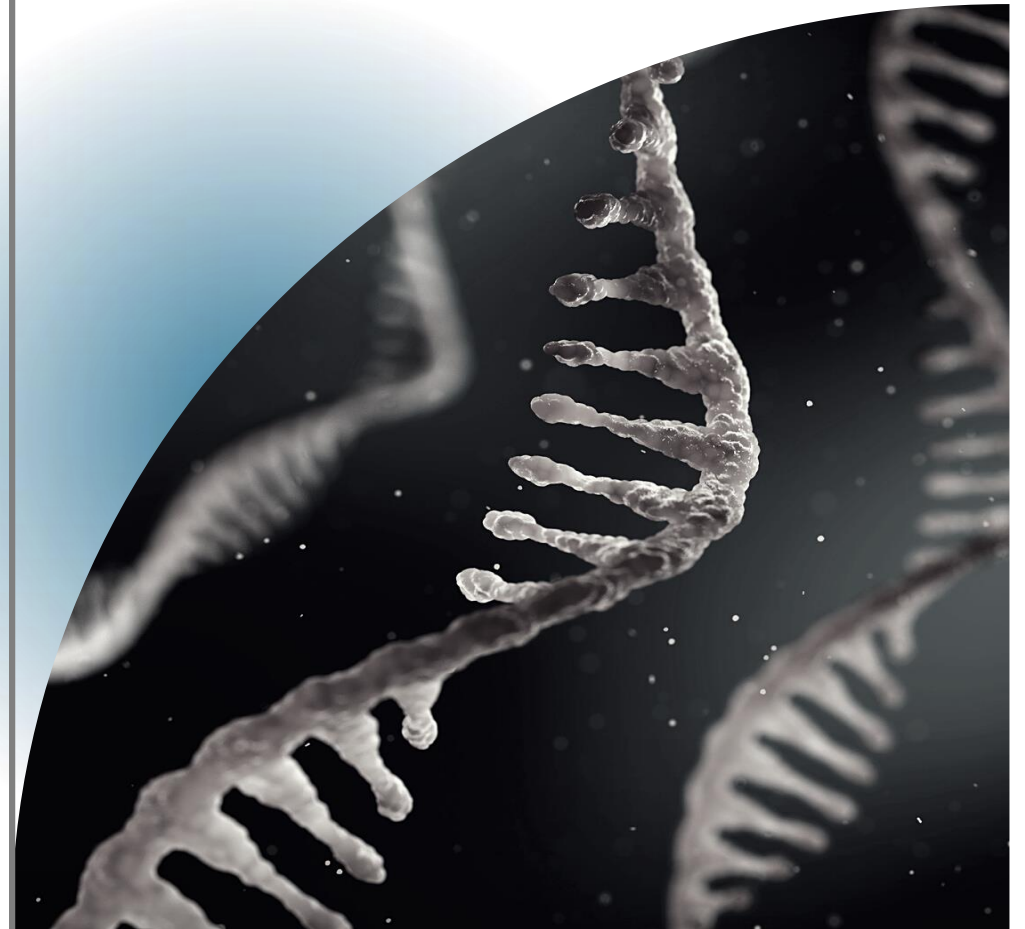
Dedicated staffing is considered met when the NF can **designate staff** to ensure resident care needs are met while mitigating the risk of cross contamination. Designate means a staff person will work from standard precautions to transmission-based precautions with high emphasis on infection prevention practices such as proper use of personal protective equipment, hand hygiene, and cleaning/disinfection. While a minimum number of staff must be present on the unit at all times to ensure safety of COVID-positive residents on transmission-based precautions, some care team members could be designated to support resident care needs.

What does Tier 1 designated staff mean

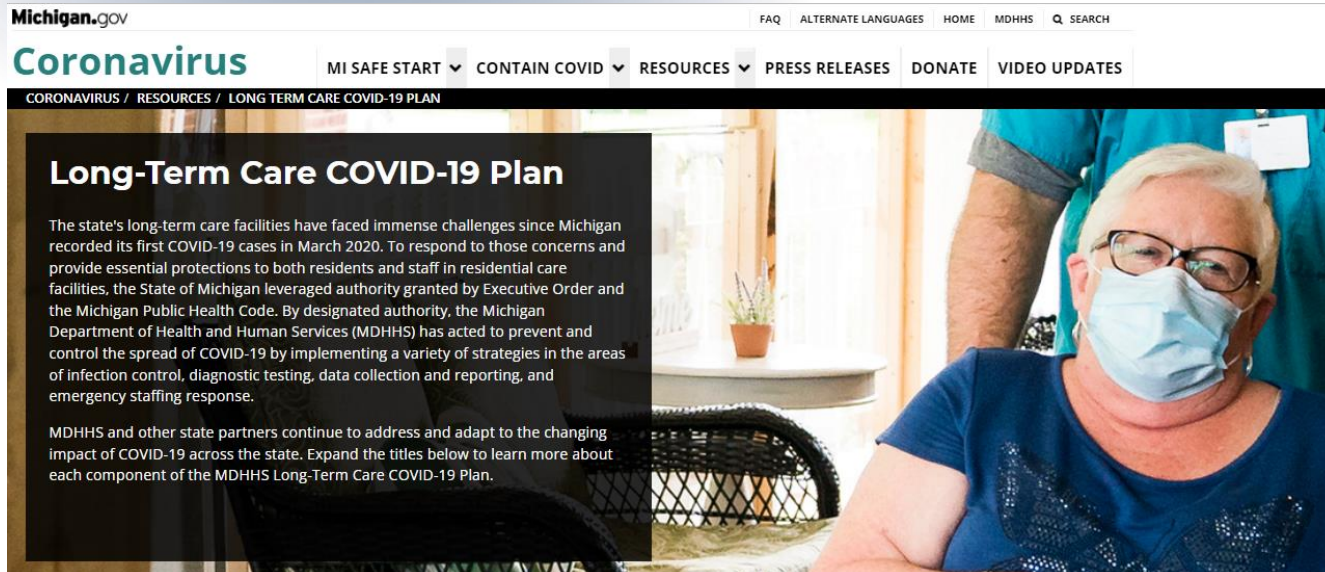


Not sure you meet qualifications?

- *Apply for CRF Tier 1 retention only*
- *Contact IPRAT at MDHHS-IPRAT@Michigan.gov requesting an IPRAT site visit to assist you in designing your COVID-19 designated area*
- *While working with IPRAT the facility is able to “shelter in place” with their residents if a COVID-19 positive occurs*



Apply Today



The screenshot shows the Michigan.gov website. The top navigation bar includes links for FAQ, ALTERNATE LANGUAGES, HOME, MDHHS, and a search bar. The main header features the 'Coronavirus' title and a menu with options: MI SAFE START, CONTAIN COVID, RESOURCES, PRESS RELEASES, DONATE, and VIDEO UPDATES. Below this, a breadcrumb trail reads 'CORONAVIRUS / RESOURCES / LONG TERM CARE COVID-19 PLAN'. The main content area is titled 'Long-Term Care COVID-19 Plan' and contains the following text:

The state's long-term care facilities have faced immense challenges since Michigan recorded its first COVID-19 cases in March 2020. To respond to those concerns and provide essential protections to both residents and staff in residential care facilities, the State of Michigan leveraged authority granted by Executive Order and the Michigan Public Health Code. By designated authority, the Michigan Department of Health and Human Services (MDHHS) has acted to prevent and control the spread of COVID-19 by implementing a variety of strategies in the areas of infection control, diagnostic testing, data collection and reporting, and emergency staffing response.

MDHHS and other state partners continue to address and adapt to the changing impact of COVID-19 across the state. Expand the titles below to learn more about each component of the MDHHS Long-Term Care COVID-19 Plan.

The background image of the webpage shows an elderly woman wearing a blue surgical mask and glasses, sitting in a chair. A healthcare worker in blue scrubs is partially visible behind her.

[CRC and CRF Programs](#)

The Care and Recovery Center and the COVID-Relief Facility Programs were established under [Michigan Public Act 231 of 2020](#). These programs were designed to ensure Michigan's nursing homes were prepared to provide care to individuals who have tested positive for coronavirus under transmission-based precautions within the guidelines and best practices from Centers for Disease Control and Prevention. Michigan's nursing homes must be reviewed by the Michigan Department of Health and Human Services to ensure they meet the minimum criteria outlined within the legislation and associated MDHHS policies. For more information on these programs, please see below:

COVID-Relief Facilities

- [Current MDHHS Policy](#)
- FY2022 Application
 - [Tier 1 \(Retain\) Application](#)
 - [Tier 2 \(Retain and Admit\) Application](#)
 - [FY 2022 CRF Application Information](#)
 - [COVID-Relief Facility Capacity Change Notice](#) - Facilities currently determined as 2022 COVID Relief (CR) Tier to submit desired capacity changes such as increase/decrease bed count or moving COVID unit to MDHHS for review.
- [Current MDHHS Designated Tier 2 COVID-Relief Facilities](#)

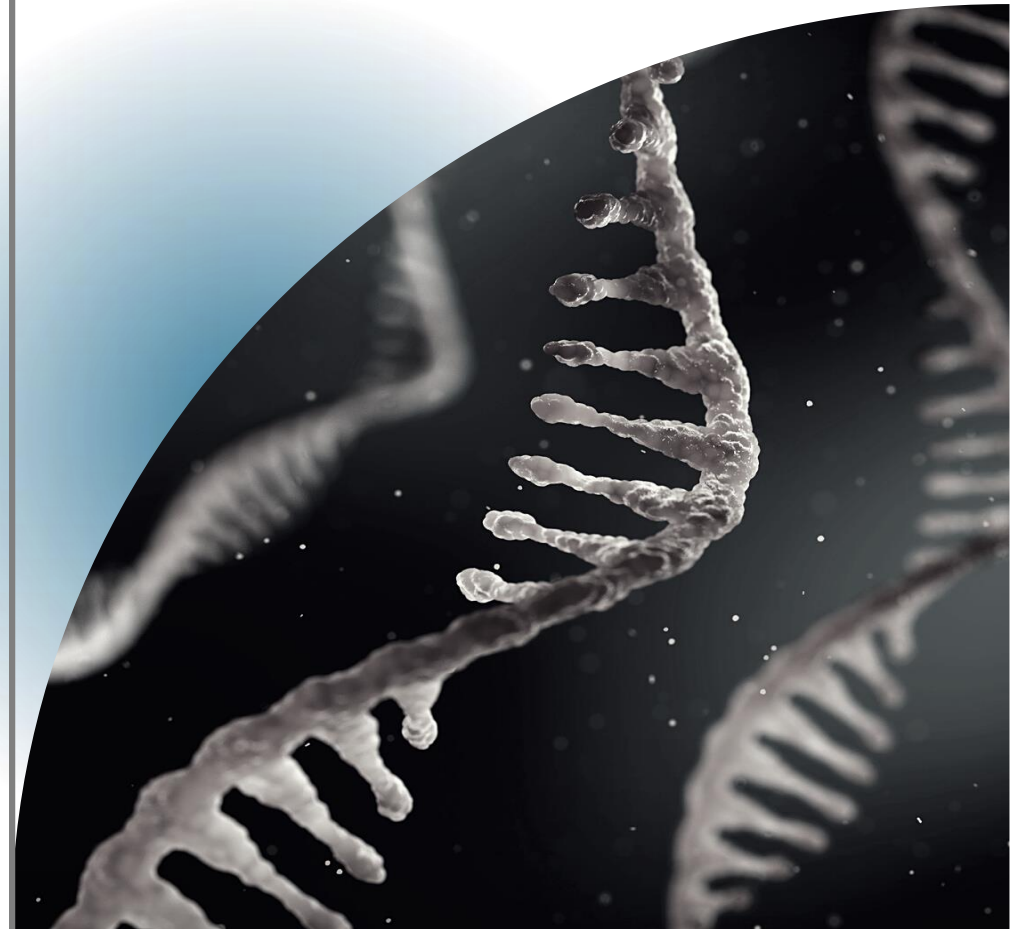
What if I am an approved FY2022 CRF Tier 1 or 2, but now I need to change my capacity?

COVID Relief Facility Capacity Change

IPRAT can help!

Your determination letter included a capacity change survey application link

- *Use the link to alert IPRAT you are either*
 - *Increasing bed capacity*
 - *Decreasing bed capacity*
 - *Changing the location of your COVID unit*
 - *An updated floorplan will need to accompany application*
- *Can't find the link?*
 - *Link is found on MDHHS LTC COVID Plan website under CRC and CRF Programs*
 - *IPRAT will process your application and once approved a new determination letter will be sent*



COVID Relief Facility Capacity Change

REQUIREMENTS

A 10/2021-9/2022 determination letter from
MDHHS approving facility as a

Tier 1 – Retention Only Facility

OR

Tier 2 – Retention and Admit Facility

What if I am an approved FY 2022 CRF Tier 1 and received my approval letter, but now I would like to be a Tier 2 CRF?

Approved Tier 1 Requesting Tier 2 Retention and Admission

Reach out to IPRAT at MDHHS-IPRAT@Michigan.gov

- Complete the “Change from Tier 1 to Tier 2 CRF Application” in Survey Monkey
 - Infection Prevention Certification must be submitted
 - Upload floorplan with designated COVID unit and any updates you are requesting
 - Unit location, don/doff area for PPE, clean storage, staff break room, staff bathroom etc...
 - Collaborate with your IPRAT auditor if they have any questions
- When you submit your completed application, you will receive a Thank You notice and will be taken to the MDHHS IPRAT website

Thank you for completing the COVID Relief Facility application! We will reach out via email to the contact person listed on this application with a formal determination. Please allow 1-2 weeks for processing of your application for Tier I status. Thank you!

DONE

- IPRAT will process application and forward to LARA to conduct your virtual visit

TIER 2

Need to meet MSA21-40 criteria for Tier 1 AND the following:

- The NF has a rating of 2 or higher in the staffing category of the CMS Nursing Facility Compare Five-Star Rating by the date of final application approval.
- The NF is not designated by CMS in Nursing Facility Compare as a Red Hand Facility, indicating a citation for abuse.
- Has available a qualified healthcare professional designated as the infection Preventionist (Centers for Disease Control and Prevention completed and documented).
- **Has had no infection control (L-level) citations from LARA in the last six months.**
- **Agree to have facility contact information shared with other NFs and hospitals that may need a place to discharge or transfer COVID-positive residents.**

TIER 2

DEDICATED STAFF

- Dedicated staffing is considered met when the NF can **devote staff** to work on their COVID-positive unit by shift to serve only COVID-positive residents. NFs determined as CRF Tier 2 must be able to devote adequate staff to their COVID-positive unit to ensure the NF is able to safely admit new COVID-positive residents as community conditions may necessitate.

Tier 1 and Facility Capacity Change Requests:

- A determination letter will be emailed by IPRAT each Friday to the email of the person who completed the application.

Tier 2:

- A determination letter will be emailed by IPRAT each Friday to the email of the person who completed the application.
- Each Friday IPRAT sends HASA an updated list of the approved Tier II facilities. HASA then uploads the list to the LTC Plan website [Coronavirus - Long Term Care COVID-19 Plan](#).

**How do I know my status?
Who are the Tier 2 facilities?**



Contact Us



MDHHS-iPRAT@michigan.gov



517-335-8165



www.Michigan.gov/IPRAT



Infection Prevention Resource and Assessment Team

