

FAMILY CENTER FOR CHILDREN AND YOUTH WITH SPECIAL HEALTH CARE NEEDS

Lisa Huckleberry

Parent Consultant

Family Center for Children and Youth
with Special Health Care Needs

FAMILY CENTER FOR CHILDREN AND YOUTH WITH SPECIAL HEALTH CARE NEEDS

Who are we?

- The Family Center for Children and Youth with Special Health Care Needs (Family Center) is the statewide, parent-directed center within Children's Special Health Care Services (CSHCS) and the Michigan Department of Health and Human Services (MDHHS).

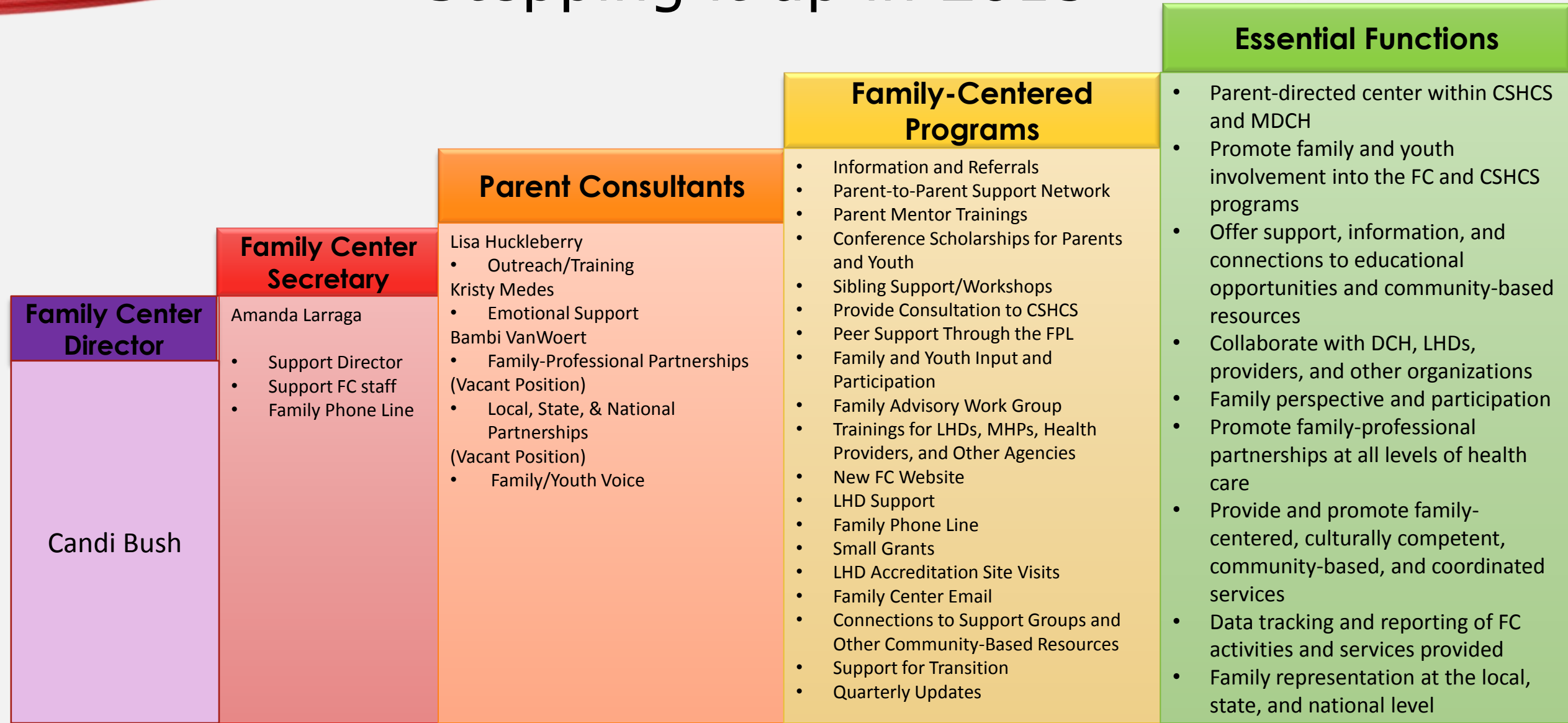
27 Years Strong

- Founded in 1988, Michigan was one of the first to lead this family-centered care initiative

National initiative

- Most states now have a similar parent lead program supported by Title V of the Social Security Act

Stepping it up in 2015



Mission

To support and connect Michigan families of children and youth with special health care needs, provide family-centered leadership throughout Michigan's health care settings, and partner in decision making within the systems of care for children and youth with special health care needs.

PROMOTES COORDINATED SYSTEMS OF CARE

- Family-centered
- Culturally competent
- Community-based

FAMILY-CENTERED CARE?

"Assures the health and well-being of children and their families through a respectful family-professional partnership. It honors the strengths, cultures, traditions, and expertise that everyone brings to this relationship. Family-centered care is the standard of practice which results in high-quality service."

--Maternal and Child Health Bureau

FOUNDATION OF FAMILY-CENTERED CARE

- Partnership between families and professionals
 - Families and professionals work together
 - Mutual respect
 - Trust is acknowledged as fundamental
 - Communication and information sharing
 - Participants make decisions together
 - Willingness to negotiate

WHAT DOES FAMILY-CENTERED CARE LOOK LIKE?



IMPACT ON CARING FOR SOMEONE WITH A DISABILITY

- 58% of parents/caregivers spend more than 40 hours per week providing support for their family member with intellectual/developmental disabilities
- 46% of parents/caregivers report that they have more caregiving responsibilities than they can handle
- 88% of caregivers report physical fatigue
- 81% of caregivers report emotional stress

Anderson, Larson, & Wuorio, 2011

EFFECTIVENESS OF THE PARENT-TO-PARENT SUPPORT

- Parents felt better able to cope with their child and their situation
- Parents are able to view their family and circumstances more positively
- Parents value helping other parents make progress toward their own goals
- Parents feel empowered to partner in the decision making process

FAMILY CENTER STAFF

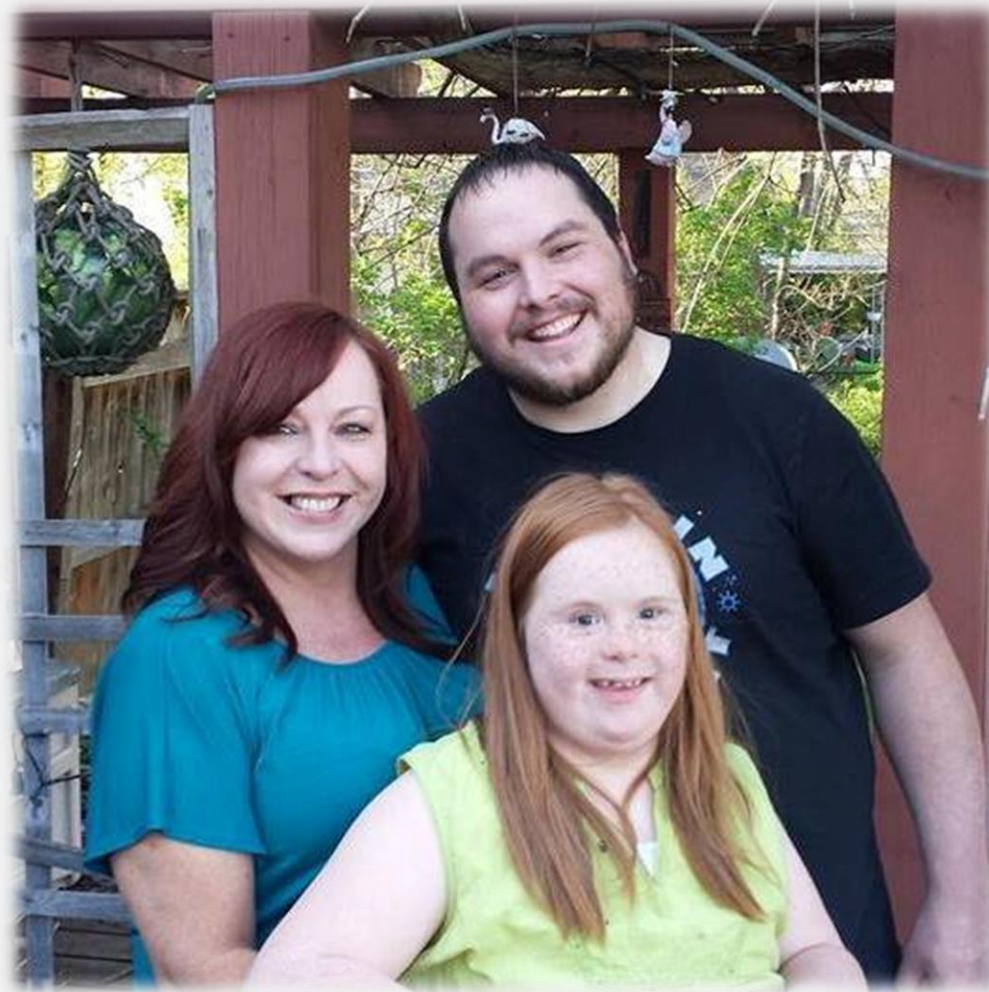
- Parents of children with special health care needs
 - Variety of diagnoses & expertise
 - Trained as Parent Mentors
 - Family/Professional Partnership with CSHCS
 - Understands the complex needs of families
 - Can help to ease isolation for new parents



Meet the Family Center Staff



LISA HUCKLEBERRY, PARENT CONSULTANT



CANDI BUSH, DIRECTOR



AMANDA LARRAGA, SECRETARY



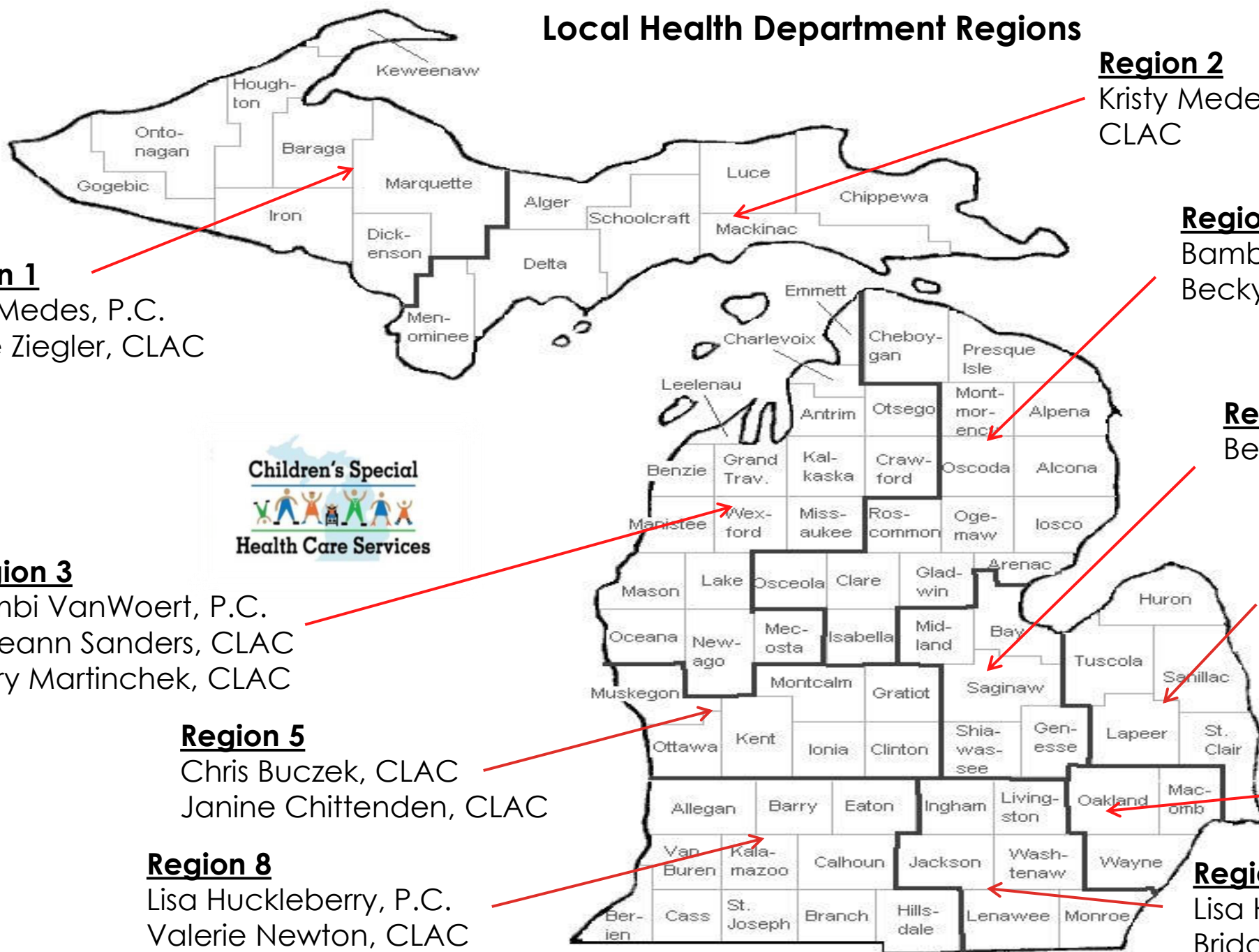
BAMBI VANWOERT, PARENT CONSULTANT



KRISTY MEDES, PARENT CONSULTANT



Local Health Department Regions



Region 2

Kirsty Medes, P.C.
CLAC

Region 4

Bambi VanWoert, P.C.
Becky Johnson-Himes, CLAC

Region 6

Beverly Pyles, CLAC

Region 7

Melanie Dunsmore, CLAC

Region 10

Margaret Sherlund, CLAC

Region 9

Lisa Huckleberry, P.C.
Bridget Huss, CLAC
Peggy Taylor, CLAC

FAMILY CENTER AS A VOICE

- Family perspective
 - Health care matters
 - Access to care
 - System navigation
- Promote Family/Professional Partnerships
 - Family-centered point of view
 - Family representation at all levels
 - Family participation in decision making

Offers emotional support to families of children and youth with special health care needs regarding physical, emotional, behavioral, developmental, or other informational needs of the family.



FAMILY CENTER SERVICES

- Family Phone Line 1-800-359-3722
- Help families navigate various systems
 - Medical
 - Educational
 - Behavioral
 - Social Services

FAMILY CENTER SERVICES

- **Support for the entire family**
 - Peer support through the Family Phone Line
 - Parent-to-Parent support through statewide network
 - Evidence-based program
 - Sibling Support/Workshops
 - Community-based and online support groups

FAMILY CENTER SERVICES

- **Informational & Educational Opportunities**
 - Parent Mentor Trainings
 - Conference scholarships for parents and youth
 - Community-based resources
 - Family and professional training opportunities
 - Local, state, and national resources and programs

FAMILY CENTER SERVICES

- **Referrals**

- Advocacy
 - ARC
 - MPAS
 - Michigan Alliance for Families
 - State Insurance Advocate

FAMILY CENTER SERVICES

- **Referrals**

- Community Mental Health
 - Autism
 - Behavioral
 - Developmental Disabilities
 - Family Support Subsidy
 - Parent Support Partners

FAMILY CENTER SERVICES

- **Referrals**

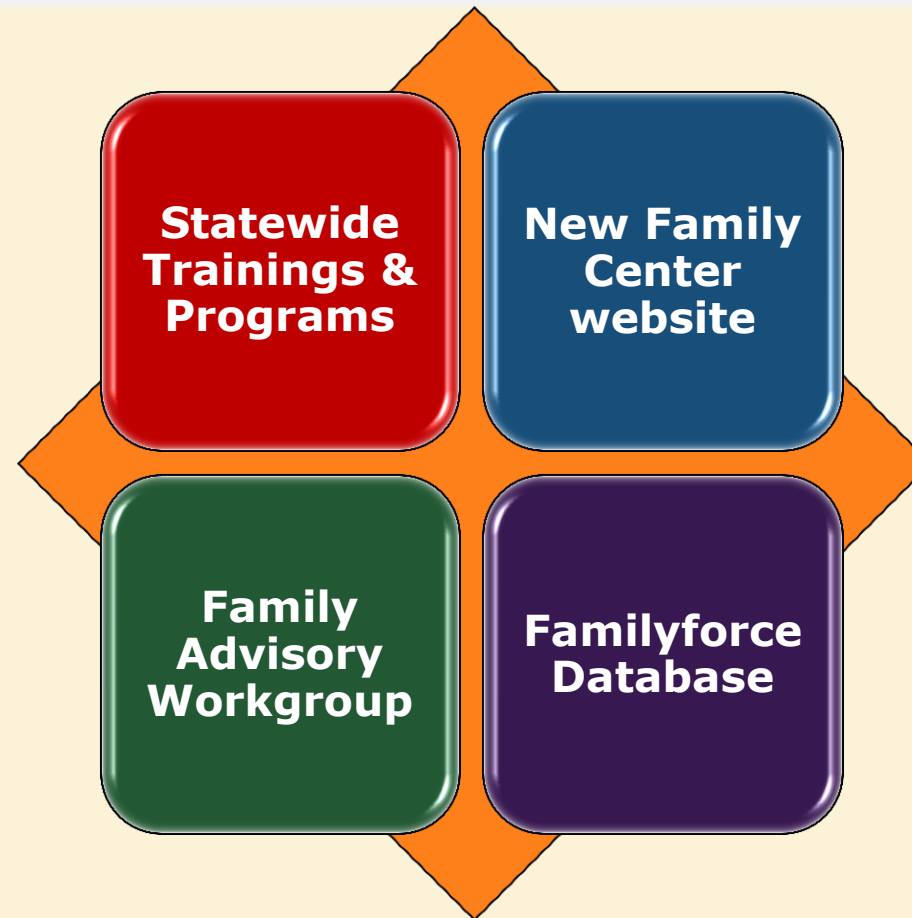
- Medicaid
- Food Assistance
- Financial Assistance

FAMILY CENTER SERVICES

- **Referrals**

- Local Health Department
 - CSHCS
 - Connections to community-based resources
 - Support for Transition
 - Assistance with applications
 - Medicaid
 - CSN Fund

FORGING AHEAD



HOW TO REACH US

Candi Bush, Director

(517) 241-7197

bushc9@michigan.gov

Bambi VanWoert, Parent Consultant

(517) 241-7097

VanWoertB@michigan.gov

Lisa Huckleberry, Parent Consultant

(517) 335-0407

HuckleberryL@michigan.gov

Amanda Larraga, Secretary

(517) 373-4380

LarragaA@michigan.gov

Kristy Medes, Parent Consultant

(517) 335-9096

MedesK@michigan.gov

Leah Waters, Parent Consultant

(313) 456-4381

WatersL2@michigan.gov

Family Phone Line (800) 359-3722

cshcsfc@michigan.gov

QUESTIONS???

