

"Mental Health: We Can and Must do better"

Please discuss among your tablemates and write down answers to the following questions

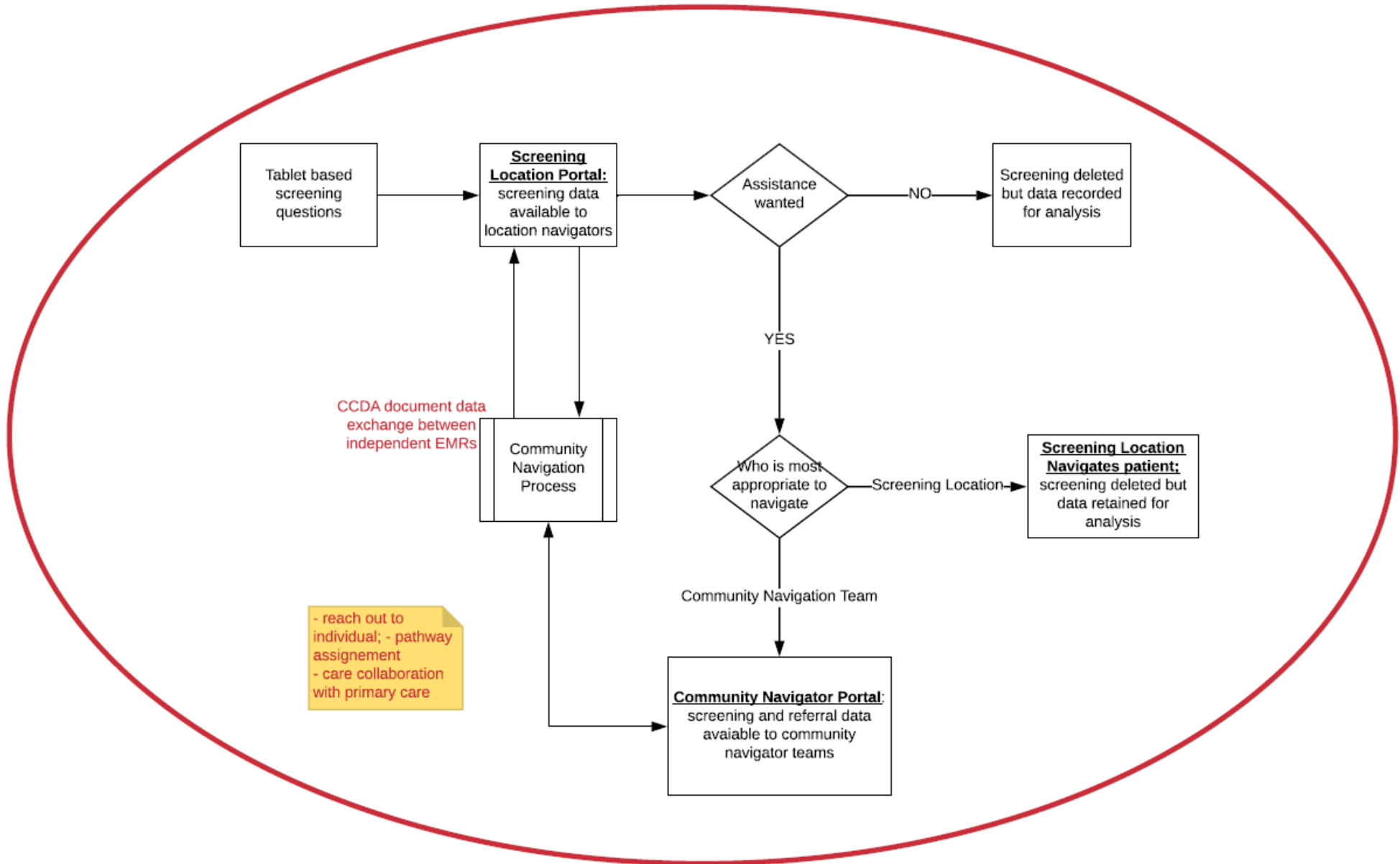
1. Out of every hundred adults in the United States how many will have a mental health problem this year?
2. What member of the team doesn't breathe, eat or sleep? Yet is crucial to the collaborative care model?
3. What is clinical inertia and how does treat-to-target fit in?
4. What is the role of the care manager in treatment intensification?
5. What is "curb-side" consultation?

Northern Michigan Community Health Innovation Region

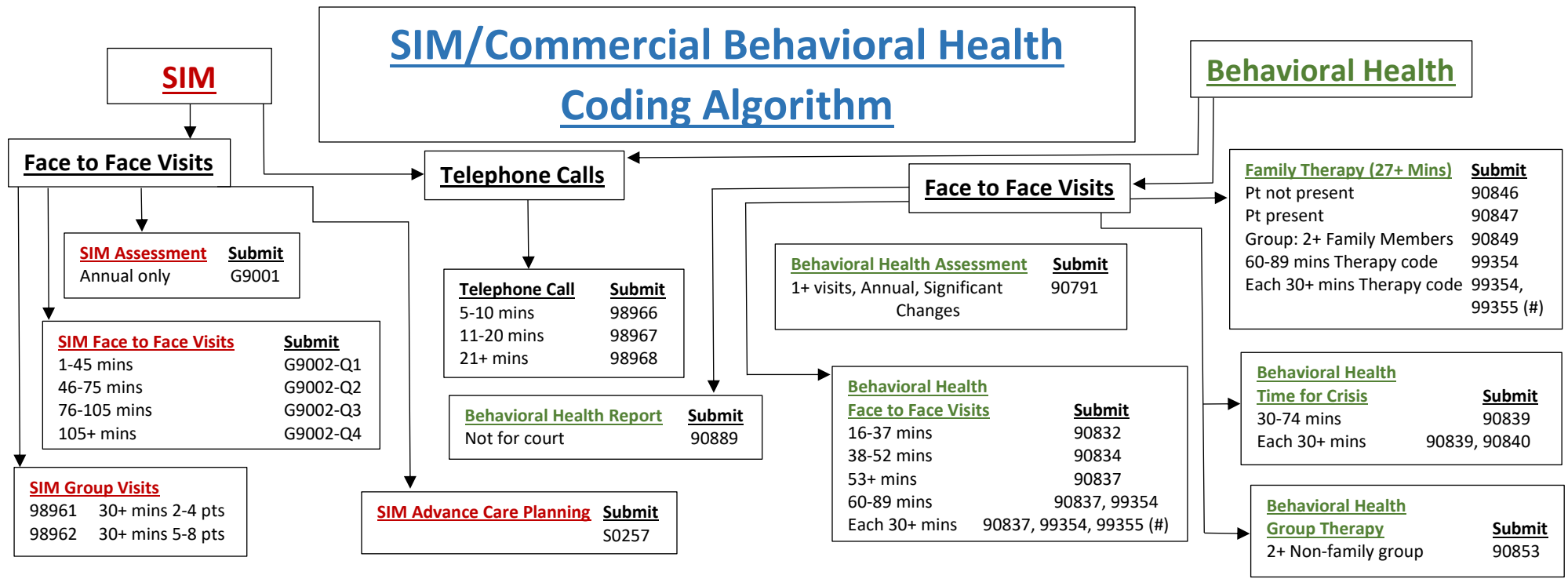


Web Enabled Screening and Referral Tool Process Flow - High Level

DATA ANALYSIS



SIM/Commercial Behavioral Health Coding Algorithm



Interactive Complexity

Children's
Medical
Group
of Saginaw Bay®

Specializing in the Care of Newborns,
Infants, Children and Adolescents
(989) 892-5664

Behavioral Health Assessment With Complexity Submit
1+ visits 90791, 90785

Behavioral Health Visits With Complexity Submit
16-37 mins 90832, 90785
38-52 mins 90834, 90785
53+ mins 90837, 90785
60-89 mins 90837, 99354, & 90785
Each 30+ mins 90837, 99354, 99355 (#) and 90785

Family Therapy With Complexity Submit
Pt not present 90846, 90785
Pt present 90847, 90785
Group 2+ Family members 90849, 90785
60-89 mins
Therapy code 99354, and 90785
Each 30+mins
Therapy code 99354, 99355 (#), and 90785

Behavioral Health Time For Crisis With Complexity Submit
30-74 mins 90839 and 90785
Each 30+ mins 90840 (#) and 90785

Behavioral Health Group Therapy With Complexity Submit
2+ Non-family group 90853 and 90785