

# 2020 HOME VISITING NEEDS ASSESSMENT

## EATON COUNTY



### KEY DEMOGRAPHICS & CULTURAL CHARACTERISTICS

**110,268**  
TOTAL POPULATION

**1,154**  
BIRTHS PER YEAR

**95%**  
HAVE HEALTH INSURANCE

**5%**  
UNDER 5 YEARS

**4%**  
FOREIGN BORN

**82%** OF HOUSEHOLDS  
HAVE INTERNET  
ACCESS

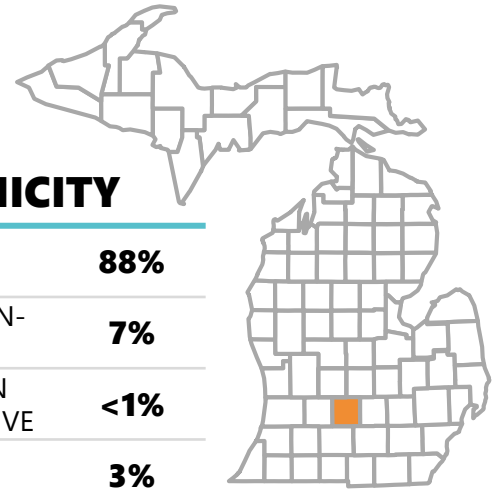
**94%**  
OF ADULTS 25+ ARE  
HIGH SCHOOL GRADS

**7%** SPEAK A  
LANGUAGE OTHER  
THAN ENGLISH IN  
THEIR HOME



#### RACE/ETHNICITY

WHITE	<b>88%</b>
BLACK OR AFRICAN-AMERICAN	<b>7%</b>
AMERICAN INDIAN AND ALASKA NATIVE	<b>&lt;1%</b>
ASIAN	<b>3%</b>
NATIVE HAWAIIAN	<b>0%</b>
MULTIRACIAL	<b>3%</b>
HISPANIC OR LATINO	<b>6%</b>
WHITE, NOT HISPANIC OR LATINO	<b>83%</b>



**EATON  
COUNTY**

**\$62,474**  
MEDIAN  
HOUSEHOLD  
INCOME

### OUTCOMES IMPACTED BY HOME VISITING

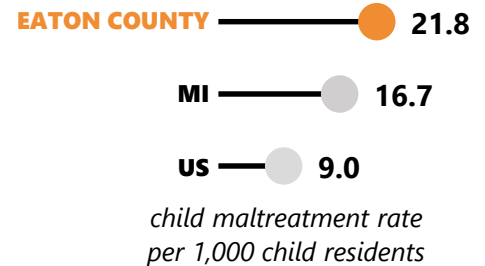
#### COUNTY PRIORITIES

- MATERNAL HEALTH
- CHILD HEALTH
- CHILD DEVELOPMENT & SCHOOL READINESS
- POSITIVE PARENTING PRACTICES
- CHILD MALTREATMENT**
- FAMILY ECONOMIC SELF-SUFFICIENCY
- LINKAGES AND REFERRALS
- JUVENILE DELINQUENCY, FAMILY VIOLENCE, AND CRIME

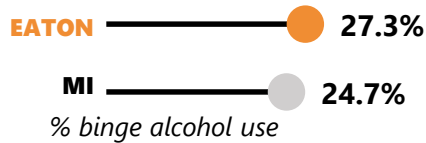


The child maltreatment rate in Eaton County is higher than the state and national average. This may be influenced by the higher prevalence of all substance abuse and use indicators in Eaton County, as compared to state and national averages: binge drinking, marijuana use, non-medical painkiller use, and illicit drug use.

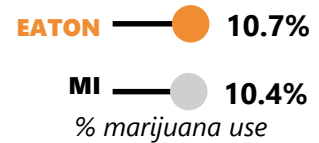
#### CHILD MALTREATMENT



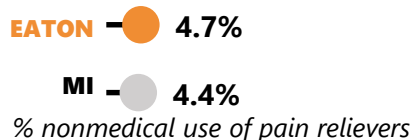
#### BINGE DRINKING



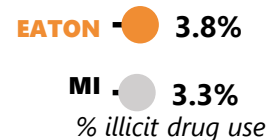
#### MARIJUANA USE



#### PRESCRIPTION PAINKILLER USE



#### ILLICIT DRUG USE



# COMMUNITY CONDITIONS IMPACTING FAMILIES

## HOMELESSNESS AMONG CHILDREN



% of children ages 0-4 who experienced homelessness during the school year



The county rate for homelessness is **lower** than Michigan's rate.

## HOUSEHOLDS RECEIVING PUBLIC ASSISTANCE



% of households receiving supplemental security income or other public assistance

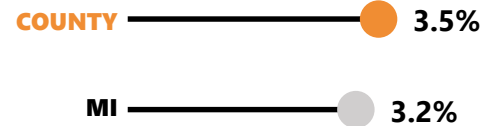


The county rate for receiving public assistance is **lower** than the rate in Michigan.

## NO HIGH SCHOOL DIPLOMA



% of persons 16-19 years of age not enrolled in school with no high school diploma

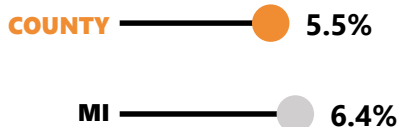


The county rate of persons without a high school diploma is **higher** than Michigan.

## NO HEALTH INSURANCE



% of persons without health insurance, under age 65 years

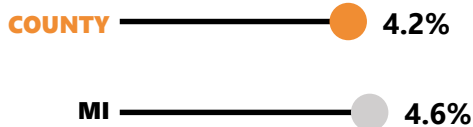


The county rate for no health insurance is **lower** than the rate in Michigan.

## UNEMPLOYMENT



% of unemployed persons 16 years of age or older within the civilian labor force

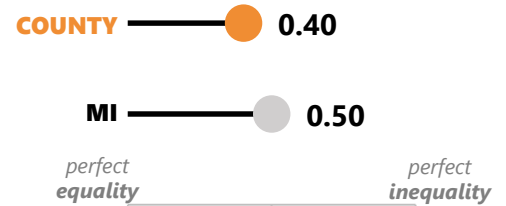


The county rate for unemployment is **lower** than the rate in Michigan.

## INCOME INEQUALITY



A measurement of how far the wealth or income distribution differs from being equal (Gini Coefficient).

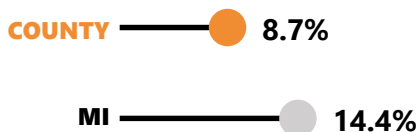


The county measure of income inequality is **lower** than in Michigan.

## FAMILIES LIVING IN POVERTY



% population living below 100% of the federal poverty level

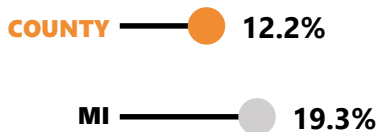


The county rate for poverty is **lower** than the poverty rate in Michigan.

## CHILDREN EXPERIENCING POVERTY



% of children ages 0-17 who live below the poverty threshold

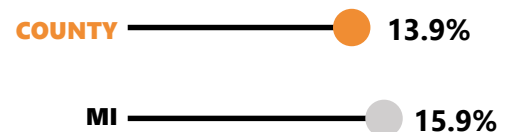


The county rate for children experiencing poverty is **lower** than Michigan's rate.

## CHILDHOOD FOOD INSECURITY



% of children experiencing food insecurity (lack of access, at times, to enough food)



The county rate for childhood food insecurity is **lower** than Michigan's rate.

# EXISTING HOME VISITING PROGRAMS

Home visiting programs sit at the intersection of families and communities. They provide critical linkages between families and community service systems. Eaton County identified the reach and quality of services for families that partner with home visiting and identified strengths and gaps in the service network. Some patterns of reach and quality for home visiting clients and the service delivery network were noted during the assessment, and ideas for strengthening the service delivery network are described below.

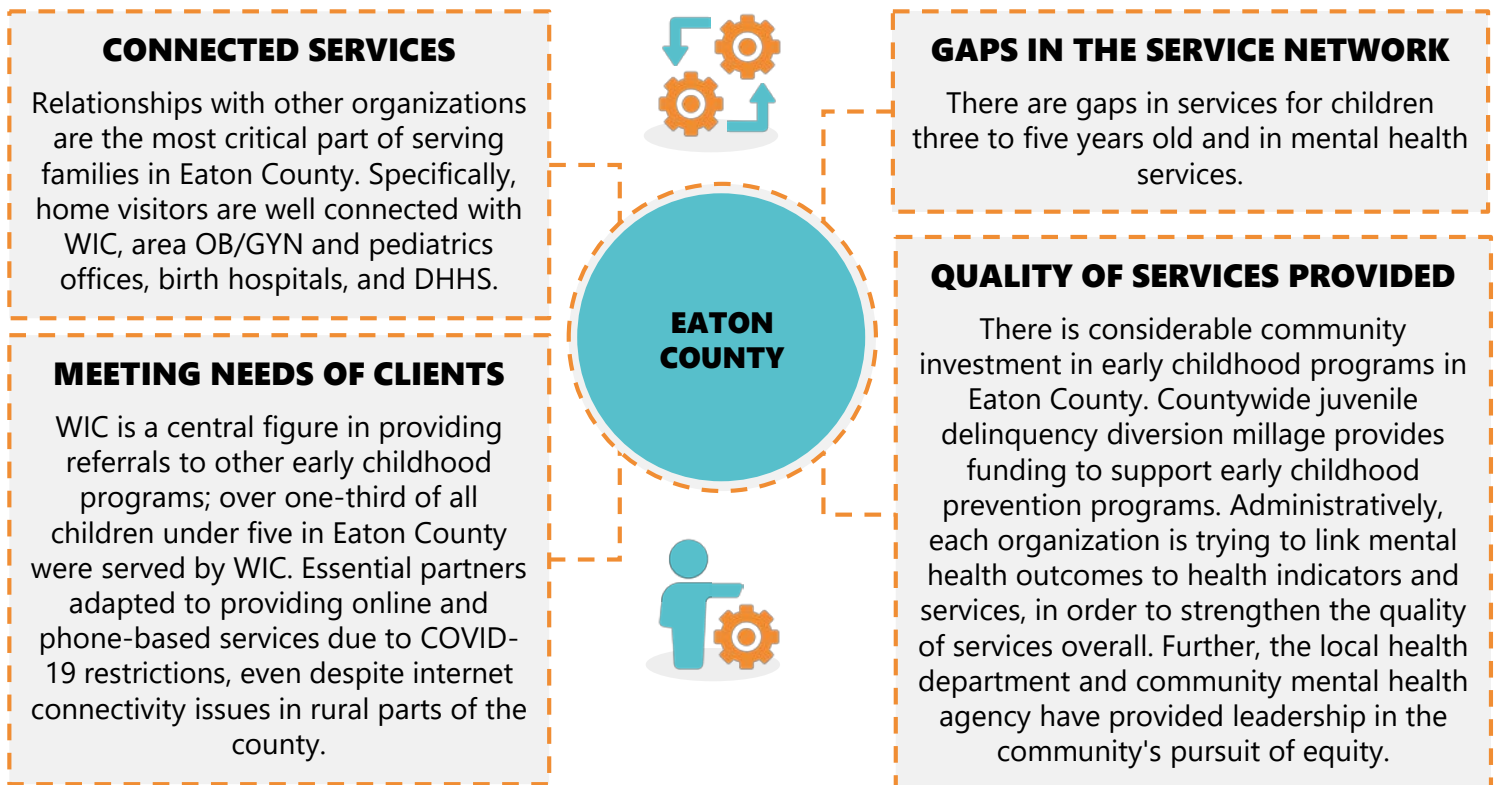
 **6**  
HOME VISITING  
PROGRAMS



**273** FAMILIES ARE **IN NEED**<sup>1</sup> OF  
HOME VISITING SERVICES IN  
EATON COUNTY

 **4** PROGRAMS ARE  
IMPLEMENTING AN  
EVIDENCE-BASED MODEL

Children under five are all served to some degree. All home visiting programs provide services throughout Eaton County; no geographic disparities in service were identified in this assessment.



## STRENGTHENING THE SERVICE DELIVERY NETWORK

Home visiting programs for children too old for the Maternal Infant Health Program and mental health services for those who aren't eligible for Community Mental Health are areas that need strengthening.

<sup>1</sup>Number of families likely to be eligible for MIECHV services based on the criteria: Number of families with children under the age of 6 living below 100% of the poverty line + number of families in poverty with a child under the age of 1 and no other children under the age of 6; AND belongs to one or more of the following at-risk sub-populations: Mothers with low education (high school diploma or less), young mothers under the age of 21, and/or families with an infant (child under the age of 1). Data Source: ACS 2017 1-Yr PUMS Data

# COMMUNITY READINESS TO EXPAND HOME VISITING

New or expanded programs and services are most successful in communities that are clear about their readiness to provide a supportive context. Home Visiting partners were convened to discuss the five dimensions of readiness to expand home visiting and identified both community strengths and weaknesses. For each of these domains, the community partners scored each dimension as a 0 (no readiness), 1 (limited readiness), 2 (moderate readiness), 3 (significant readiness), or 4 (full readiness).

## COMMUNITY KNOWLEDGE OF FAMILY NEEDS

### MODERATE READINESS



The community has an excellent Great Start Collaborative and WIC program. Program staff make sure eligible individuals sign up; however, people are not signing up as much as they used to despite the increased availability of remote services. Millage funds help with services, but it is hard to track referrals for most home visiting programs.

## COMMUNITY PURSUIT OF EQUITY

### MODERATE READINESS



Programs have released anti-racial statements for their agencies, but not all community members have access to internet to view the statements. There are programs in place to help the needs of rural vs. urban areas, but it is not available in some areas of the county.

## COMMUNITY KNOWLEDGE OF HOME VISITING

### SIGNIFICANT READINESS



Community members find home visiting services through service providers and referrals from Medicaid health plans. Although COVID has allowed incentives for virtual home visits, funding has still limited programs overall. Families and home visitors are safely following COVID prevention procedures, but intake procedures for services are not as easy to access.

## COMMUNITY LEADERSHIP

### SIGNIFICANT READINESS



Leadership is very strong, providing quick answers and services to the people. The needs of the programs are prioritized. While the millage funding is beneficial for every program, there is limited control for home visiting programs since the community votes on major funding decisions. Health Department funding has also decreased over the years.

## COMMUNITY CLIMATE

### SIGNIFICANT READINESS



Programs are making health treatment plans a priority, while also linking mental health outcomes to health indicators and specific services. The county is also working to expand Early Head Start, but there has not been enough financial support to prioritize the early childhood population.

## COMMUNITY RESOURCES

### MODERATE READINESS



Programs continuously search for grant funding to expand services, but Eaton county faces challenges with the high cost of delivering services to rural areas, and challenges with costs related to programs billing Medicaid. There is also an immediate need for internet in the county.

# NEED & CAPACITY TO EXPAND HOME VISITING

Eaton County has need and capacity to expand evidence-based home visiting. Need is especially high in the areas of child injuries and maltreatment, and substance use and abuse. The Early Head Start provider for Ingham and Shiawassee Counties already plans to expand services into Eaton County as soon as additional funding is identified. This capacity is bolstered by existing relationships with childcare providers in the county.

This process engaged families to participate as partners and leaders by creating virtual spaces for participation to adapt to COVID-19 restrictions. 1-on-1 interviews were conducted with participants from each county's WIC program where health department staff had existing built rapport. Each participating family received a \$50 Meijer or Wal-Mart gift card to offset the time and energy to participate in the assessment.

## Thank you to the parents and community partners who engaged in the assessment process.

*Data collected by Mid-Michigan District Health Department (MMDHD) with assistance from MPHI-CHC. For more information about this assessment, contact MMDHD. This program is supported by the Health Resources and Services Administration (HRSA) of the U.S. Department of Health and Human Services (HHS) as part of an award totaling \$7,799,696 with 0% financed with non-governmental sources. The contents are those of the author(s) and do not necessarily represent the official views of, nor an endorsement, by HRSA, HHS, or the U.S. Government. For more information, please visit [HRSA.gov](https://www.hrsa.gov).*