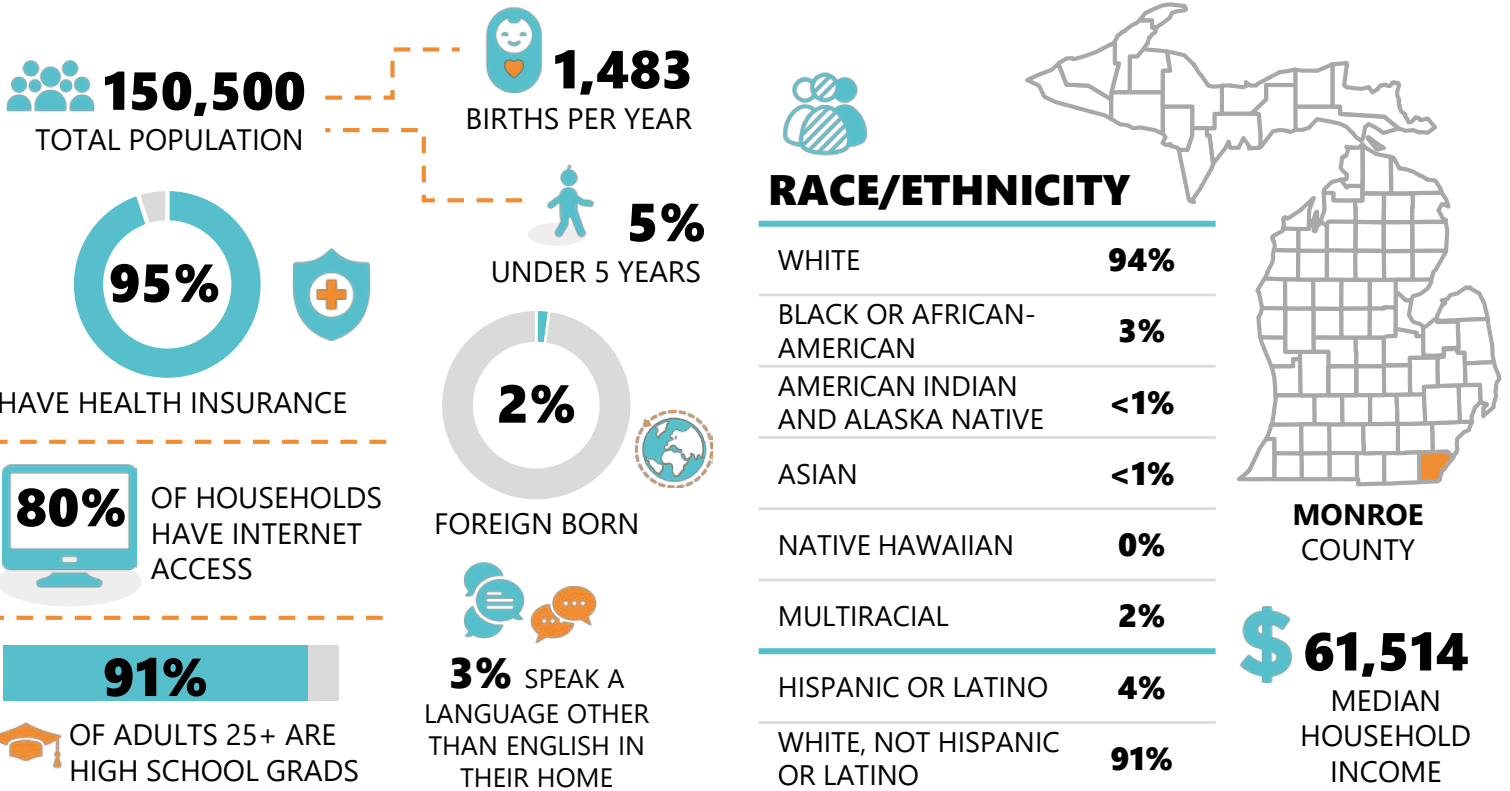


# 2020 HOME VISITING NEEDS ASSESSMENT

## MONROE COUNTY



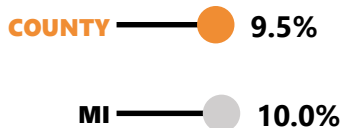
### KEY DEMOGRAPHICS & CULTURAL CHARACTERISTICS



### OUTCOMES IMPACTED BY HOME VISITING

#### PRETERM DELIVERY

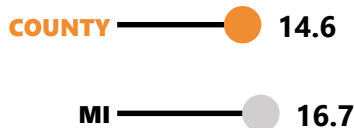
% of live births at less than 37 weeks



The county rate for preterm delivery is **lower** than Michigan's rate.

#### CHILD MALTREATMENT

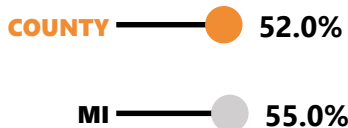
rate of victims ages 1-17 per 1,000 child residents



The county rate for child maltreatment is **lower** than Michigan's rate.

#### 3<sup>RD</sup> GRADE READING

% of students who did not meet standards on the ELA M-STEP



The county rate for 3<sup>rd</sup> grade reading incompetency is **lower** than the state.

#### DOMESTIC VIOLENCE

number of domestic violence victims per 1,000 residents



The county rate for child maltreatment is **higher** than Michigan's rate.

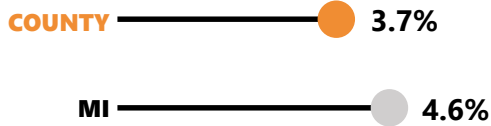
**Note: This county did not formally complete a local home visiting needs assessment. This profile was completed based on existing county-level data.**

# COMMUNITY CONDITIONS IMPACTING FAMILIES

## HOMELESSNESS AMONG CHILDREN



% of children ages 0-4 who experienced homelessness during the school year



The county rate for homelessness is **lower** than Michigan's rate.

## HOUSEHOLDS RECEIVING PUBLIC ASSISTANCE



% of households receiving supplemental security income or other public assistance



The county rate for receiving public assistance is **lower** than the rate in Michigan.

## NO HIGH SCHOOL DIPLOMA



% of persons 16-19 years of age not enrolled in school with no high school diploma

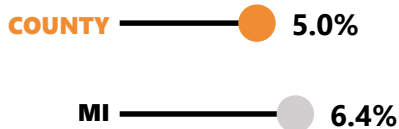


The county rate of persons without a high school diploma is **higher** than Michigan.

## NO HEALTH INSURANCE



% of persons without health insurance, under age 65 years



The county rate for no health insurance is **lower** than the rate in Michigan.

## UNEMPLOYMENT



% of unemployed persons 16 years of age or older within the civilian labor force

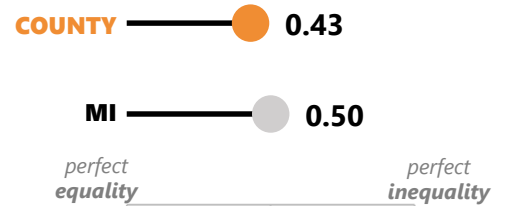


The county rate for unemployment is **higher** than the rate in Michigan.

## INCOME INEQUALITY



A measurement of how far the wealth or income distribution differs from being equal (Gini Coefficient).

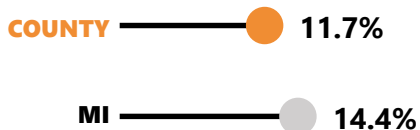


The county measure of income inequality is **lower** than in Michigan.

## FAMILIES LIVING IN POVERTY



% population living below 100% of the federal poverty level

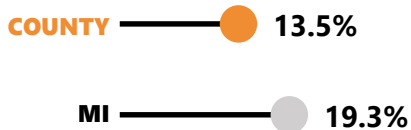


The county rate for poverty is **lower** than the poverty rate in Michigan.

## CHILDREN EXPERIENCING POVERTY



% of children ages 0-17 who live below the poverty threshold

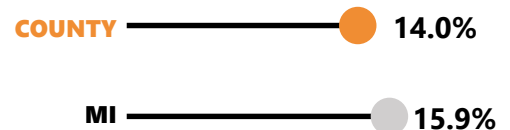


The county rate for children experiencing poverty is **lower** than Michigan's rate.

## CHILDHOOD FOOD INSECURITY



% of children experiencing food insecurity (lack of access, at times, to enough food)



The county rate for childhood food insecurity is **lower** than Michigan's rate.