



**CEDARBRIDGE**  
GROUP

# Michigan Five-Year Health IT Roadmap

**Bridging the Digital Divide**

*Information Technology Needs and Gaps to Address Racial Disparities and Social Determinants of Health*



September 23, 2020



# CedarBridge Group Facilitators

---



Kate Kiefert  
**Senior Consultant**

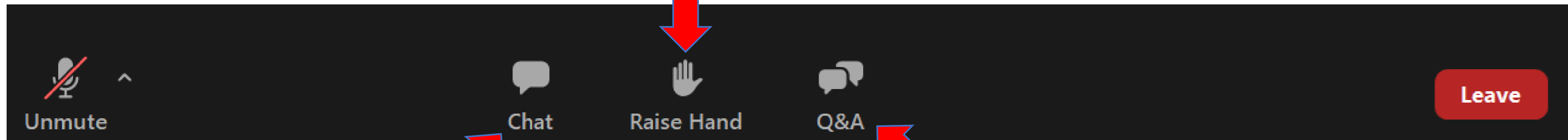


Dawn Bonder  
**Managing Director**



# Audio and Chat Controls

To respond verbally use the **Raise Hand** option, and our facilitators will unmute you.



Use the **Chat** to engage with all participants

Use the **Q&A** option when you have a question for the facilitators



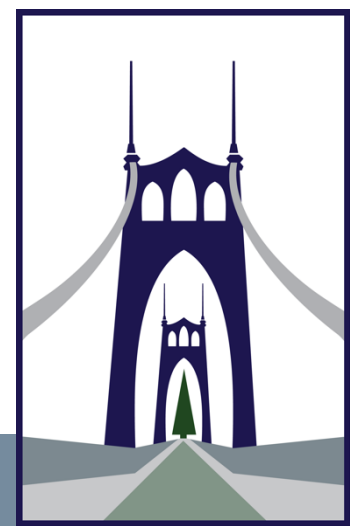
# Participating in the Virtual Forum

- If you would like to respond verbally to a question:
  - “Raise hand” in the participant box and facilitator will call on you;
  - State your name / organization, and begin speaking; **OR**
  - Input your response in the chat
- Ask clarifying questions in the Q&A box, if needed
- To emphasize someone’s point, you may “stack” in the chat box (i.e. “+++” when you agree with what is being said)



# Quick Poll #1:

## What Type of Organization Do You Represent Today?



CEDARBRIDGE  
GROUP

# A Message from the MDHHS Director

---

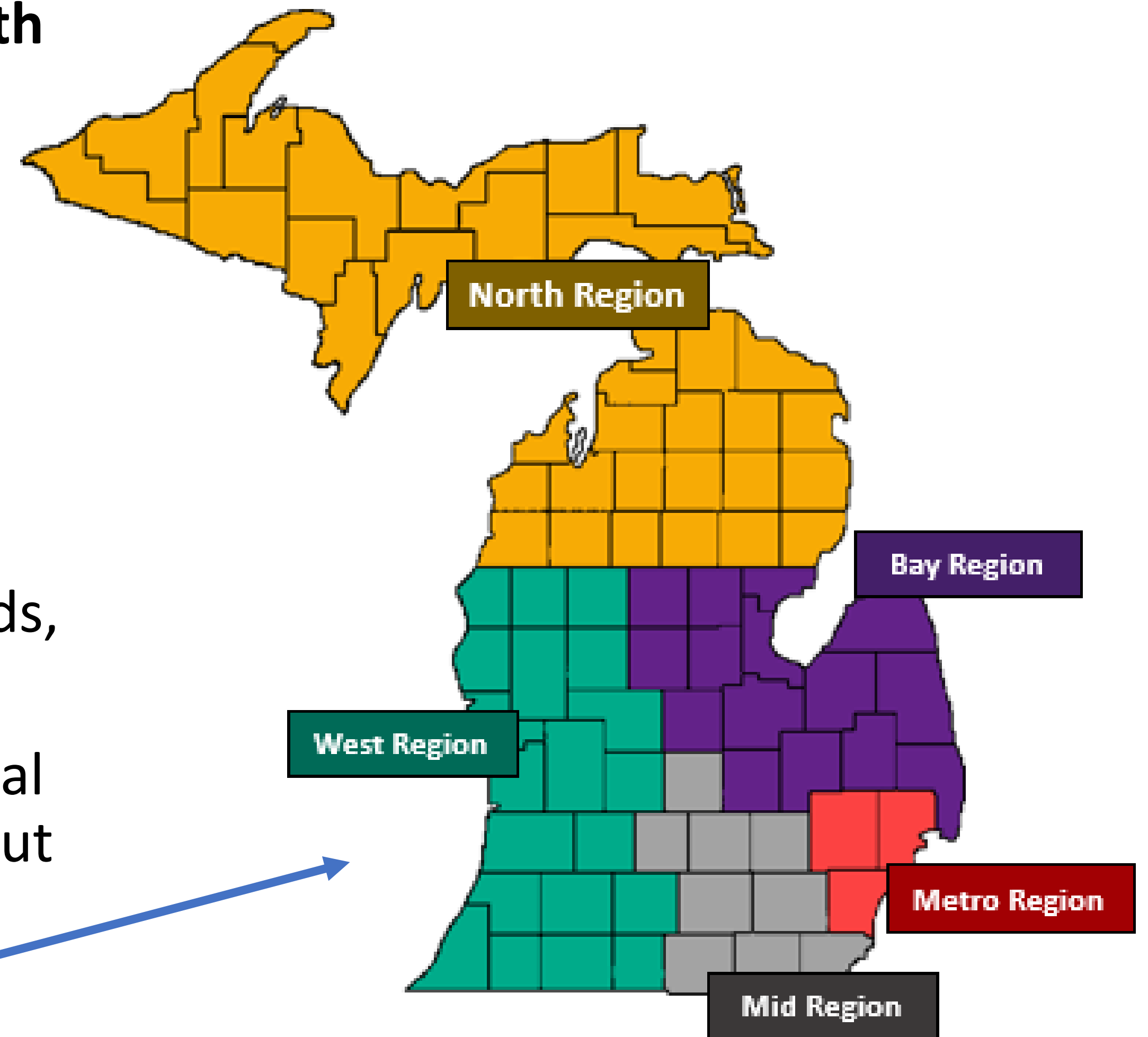
## ROBERT GORDON, DIRECTOR

Robert Gordon serves as the director of the Michigan Department of Health and Human Services, where he oversees Medicaid programs, Children's Protective Services, food assistance, public health and many other statewide health and human services programs.



# Virtual Stakeholder Forums: Process

- **16 online forums will be held between September 15th – November 4<sup>th</sup>** to inform the next Statewide Health Information Technology Roadmap
- Hosted by Michigan Department of Health & Human Services (MDHHS) and Michigan Health Information Technology Commission (HITC)
- Two forums will be focused on each of eight themes
  - First forum for each theme will focus on data needs, data gaps, and “current state” for health IT
  - Second forum for each theme will focus on regional opportunities and challenges, with virtual break-out sessions for each of the five regions on this map (consolidated from [MI Prosperity Regions](#))





# Social Determinants of Health and Racial Disparities: Data Needs & Gaps, and the Current Impact of Health IT

---

## *Purpose*

- Hear from stakeholders and members of the community
- Learn about current priorities and challenges of organizations in Michigan
- Learn about the current use of data and health IT for supporting SDOH objectives and goals, including:
  - Resource directories and referral management
  - Event notifications
  - Interoperability between healthcare and social service organizations for coordination of care, services, benefits
  - Reporting requirements and analytics for population health, risk adjustment, outcomes

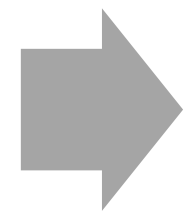


# Bridging the Digital Divide: Social Determinants of Health and Racial Disparities

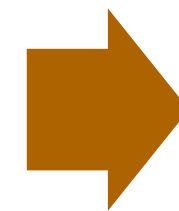
---



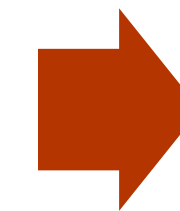
Vision for a  
Five-Year  
Health IT  
Roadmap



What are  
your SDOH  
& Health  
Equity  
priorities?



Michigan  
SDOH &  
Health  
Equity  
Today



Wrap Up  
and Next  
Steps



# Vision for a Five-Year Health IT Roadmap

---



**Dr. Norm Beauchamp**  
**Executive Vice President for Health Sciences, Michigan State University**  
*Michigan Health Information Technology Commission*



# Vision for a Five-Year Health IT Roadmap: A Brief History

---

2005

- Governor Jennifer Granholm announces efforts to explore the role of IT in healthcare transformation and improving care outcomes
- The Michigan Department of Community Health and Department of Information Technology are charged with convening stakeholders to develop a strategy

2006

- 200+ healthcare stakeholders are convened
- The “Conduit to Care” strategy document is published
- The legislature establishes the Health IT Commission
- Federal and state funding is secured to implement plans



# Vision for a Five-Year Health IT Roadmap: Strategic Planning During a Global Pandemic

---

2019

- The Health IT Commission adopts a resolution to update the “Conduit to Care” strategy
- The Michigan Health Endowment Fund awards funding for the development of an updated Statewide Health IT Roadmap

2020

- The coronavirus pandemic causes engagement and discovery for the Statewide Roadmap to be reimagined for virtual spaces
- 650+ healthcare, social service, community nonprofits, state and local agencies and consumer stakeholders are engaged.....THANK YOU!
- Virtual forums, surveys, and interviews will inform the planning process



# Principles for Updating the Statewide Health IT Roadmap

## Align

- Business strategies
- Priorities



## Leverage Existing Investments

- Identify and add value to local efforts
- Maximize benefit from existing tools



## Shared Goal: Interoperability

## Validate Input

- Share draft recommendations
- Solicit public comment



## Inclusivity

- Create spaces for broad feedback
- Conduct comprehensive environmental scan





# Connecting Virtually to Develop a Five-Year Health IT Roadmap



Healthcare Stakeholders



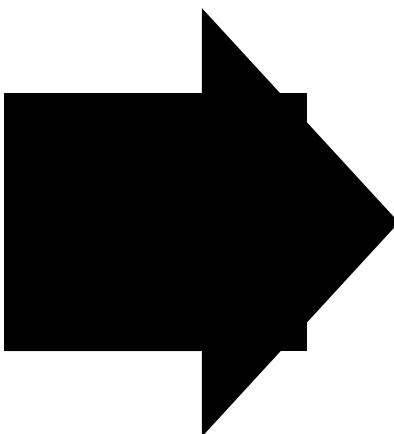
Social Service Stakeholders



Government Agencies



Consumers/Advocates



## Virtual Outreach and Engagement

Virtual Forums

Electronic Surveys

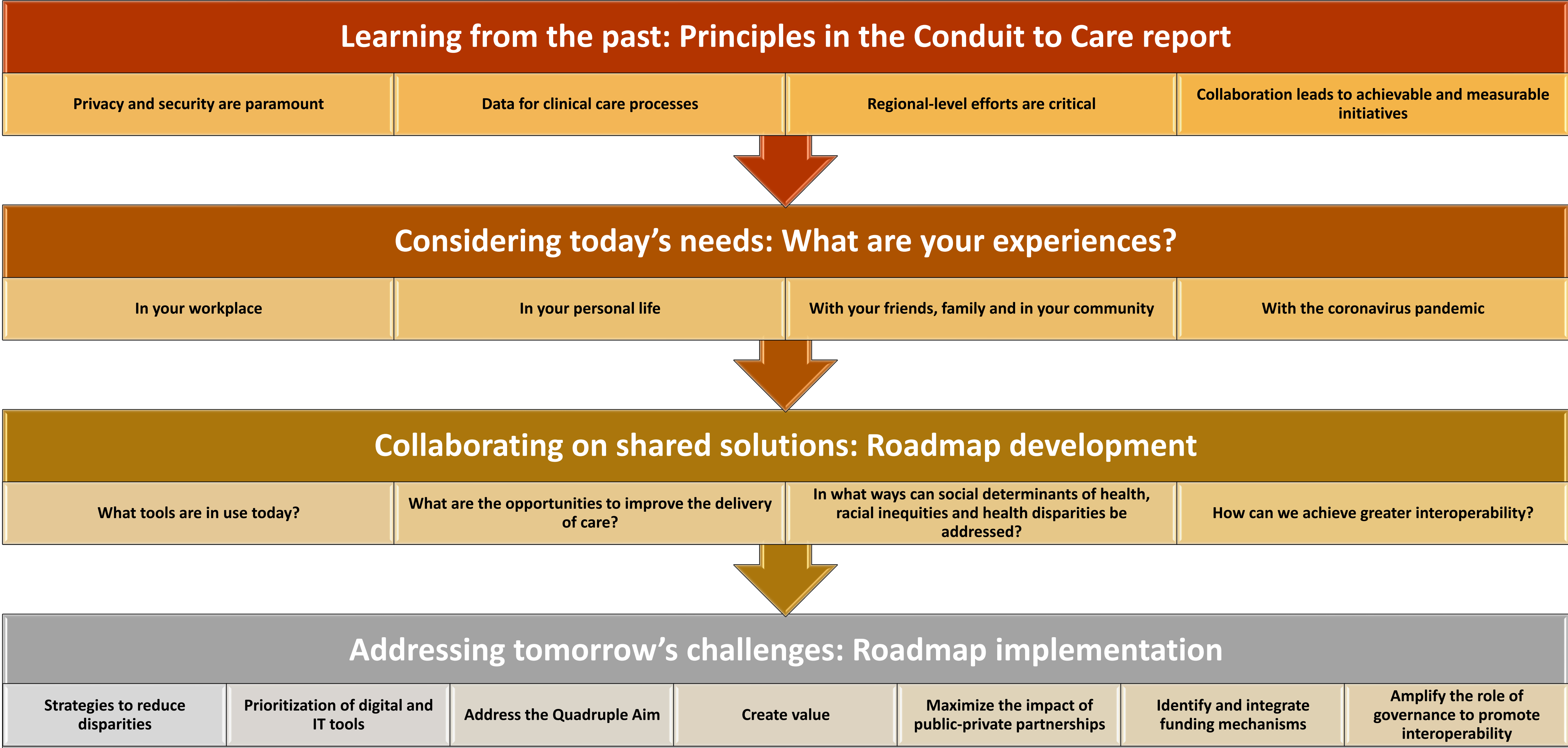
Phone Interviews

Partner Communication Tools

Social Media



# Roadmap Development Process

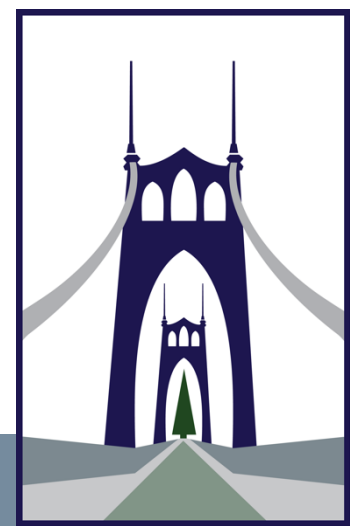




# Strategic Alignment



# Quick Poll #2 and Discussion: Social Determinants of Health Priorities



CEDARBRIDGE  
GROUP

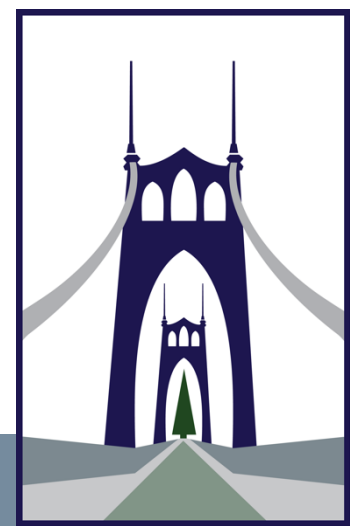


# Quick Poll #3 and Discussion: Social Determinants of Health Priorities



CEDARBRIDGE  
GROUP

# Quick Poll #4 and Discussion: Health Equity Priorities



CEDARBRIDGE  
GROUP



# Quick Poll #5 and Discussion: Health Equity Priorities



CEDARBRIDGE  
GROUP

# Situational Scenario for Discussion

---



- Brenda, 62
- Lived in Michigan since 1990
- Her only family member is a younger brother
- Her primary source of income is Social Security
- Her deteriorating health poses a significant challenge to carry out daily routines.
- She takes many prescription medications, has asthma, stomach problems, and breast cancer; she is currently undergoing radiation treatment for her breast cancer.
- She finds it difficult to pay for co-payments for medications



# Wrap Up & Next Steps



**CEDARBRIDGE**  
GROUP

# High Level Timeline for Roadmap Development Process

---





# Remaining Stakeholder Forums & Dates

Register at: <https://bit.ly/32uM6gJ>

Title	Discovery Forum	Regional Forum
<b>Reflections on Public Health During a Global Pandemic:</b> <i>Information Technology Needs and Gaps for Public Health</i>	September 15, 2020 1:00 – 3:00 PM Eastern	October 20, 2020 1:00 – 3:00 PM Eastern  Registration: <a href="https://zoom.us/webinar/register/WN_RYzYkP5eSIWL-vYK00wBeA">https://zoom.us/webinar/register/WN_RYzYkP5eSIWL-vYK00wBeA</a>
<b>Coordinating During Crisis:</b> <i>Information Technology Needs and Gaps for Emergency Services</i>	September 16, 2020 1:00 PM – 3:00 PM Eastern	October 21, 2020 1:00 PM – 3:00 PM Eastern  Registration: <a href="https://zoom.us/webinar/register/WN_--jwjMgqTIS9WWnb3_jZUg">https://zoom.us/webinar/register/WN_--jwjMgqTIS9WWnb3_jZUg</a>
<b>Connecting All Points of Care:</b> <i>Information Technology Needs and Gaps for Behavioral Health Services</i>	September 17, 2020 1:00 PM – 3:00 PM Eastern	October 22, 2020 1:00 PM – 3:00 PM Eastern  Registration: <a href="https://zoom.us/webinar/register/WN_WACJTlaZQLGdBO3YT3_Qtg">https://zoom.us/webinar/register/WN_WACJTlaZQLGdBO3YT3_Qtg</a>
<b>Using Data to Drive Outcomes:</b> <i>Information Technology Needs and Gaps for Quality Improvement Efforts</i>	September 21, 2020 1:00 PM – 3:00 PM Eastern	October 27, 2020 1:00 PM – 3:00 PM Eastern  Registration: <a href="https://zoom.us/webinar/register/WN_LU9KtX7fTP6RaQgQ1PW1qA">https://zoom.us/webinar/register/WN_LU9KtX7fTP6RaQgQ1PW1qA</a>

# Remaining Stakeholder Forums & Dates

Register at: <https://bit.ly/32uM6gJ>

Title	Discovery Forum	Regional Forum
<b>Bridging the Digital Divide:</b> <i>Information Technology Needs and Gaps to address Racial Disparities and Social Determinants of Health</i>	September 23, 2020 1:00 PM – 3:00 PM Eastern	October 28, 2020 1:00 PM – 3:00 PM Eastern  Registration: <a href="https://zoom.us/webinar/register/WN_1Ku_2f31QgK6bjXUYc5pzg">https://zoom.us/webinar/register/WN_1Ku_2f31QgK6bjXUYc5pzg</a>
<b>Resident and Advocate Perspectives on Health IT for Person-Centered Care:</b> <i>Consumer perspectives on Health IT, Digital Health Solutions and patient access to data.</i>	September 24, 2020 1:00 PM – 3:00 PM Eastern  Registration: <a href="https://zoom.us/webinar/register/WN_86PMKNCIR0WF1KzqL4wWbg">https://zoom.us/webinar/register/WN_86PMKNCIR0WF1KzqL4wWbg</a>	October 29, 2020 1:00 PM – 3:00 PM Eastern  Registration: <a href="https://zoom.us/webinar/register/WN_3fAw2R9Q-qSJl1j3yQ3TA">https://zoom.us/webinar/register/WN_3fAw2R9Q-qSJl1j3yQ3TA</a>
<b>Coordinating Care for the Vulnerable:</b> <i>Information Technology Needs and Gaps for Aging and Disability Services</i>	September 29, 2020 1:00 PM – 3:00 PM Eastern  Registration: <a href="https://zoom.us/webinar/register/WN_NGvV8SIsS52JyIXzMBHQow">https://zoom.us/webinar/register/WN_NGvV8SIsS52JyIXzMBHQow</a>	November 2, 2020 1:00 PM – 3:00 PM Eastern  Registration: <a href="https://zoom.us/webinar/register/WN_Ataj-TsgQqaMzR9kdP7fcg">https://zoom.us/webinar/register/WN_Ataj-TsgQqaMzR9kdP7fcg</a>
<b>Give All Kids a Healthy Start:</b> <i>Information Technology Needs and Gaps for Maternal, Infant and Children’s Services</i>	September 30, 2020 1:00 PM – 3:00 PM Eastern  Registration: <a href="https://zoom.us/webinar/register/WN_q92lvyPcQtuJVlv5c2eRDA">https://zoom.us/webinar/register/WN_q92lvyPcQtuJVlv5c2eRDA</a>	November 4, 2020 1:00 PM – 3:00 PM Eastern  Registration: <a href="https://zoom.us/webinar/register/WN_ggK1Osu1TSqwZ2BlvtNEpg">https://zoom.us/webinar/register/WN_ggK1Osu1TSqwZ2BlvtNEpg</a>



# Roundtable Discussion



**CEDARBRIDGE**  
GROUP

# Thank you!

For questions or feedback, please email:  
[miroadmap@cedarbridgegroup.com](mailto:miroadmap@cedarbridgegroup.com)

For more information, visit the HITC website: <https://bit.ly/32uM6gJ>



**CEDARBRIDGE**  
GROUP



# Appendix Slides

## Quick Poll Questions



**CEDARBRIDGE**  
GROUP

# Quick Poll #1 Question

---

## What type of organization do you represent?

- Community Based Organization/Advocacy
- Government Agency
- Health Information Exchange/Health IT
- Hospitals and Health Systems
- Primary Care
- Behavioral Health
- Other Provider Groups (e.g., oral health, specialists, LTC, EMS)
- Payer
- Public Health
- Other (please describe in the **Chat starting with “Q1”**)



# Quick Poll #2 Questions

---

Is investing in information sharing systems or IT infrastructure designed for addressing social determinants of health (SDOH) a priority for your organization? Please rate 1 – 5. (1 = not important, 5 = extremely important)

**What are the most effective IT systems or tools for addressing SDOH at the individual level? (select all that apply)** Electronic social risk screenings and assessments

- Resource directory
- Closed-loop referral platform (e.g., Aunt Bertha, Unite Us, NowPow, Healthify)
- Health information exchange platform
- Community information exchange platform (e.g., platform integrating data from and between health care and social service providers)
- Electronic health record with access to physical and behavioral health information
- State data sets and access to state data systems
- Other (please describe in the **Chat starting with “Q3”**)

**What are the most effective IT systems or tools for addressing SDOH at the population level? (select all that apply)**

- Aggregated, electronic social risk screenings and assessments
- Community resource directory
- Closed-loop referral platform (e.g., Aunt Bertha, Unite Us, NowPow, Healthify)
- Health information exchange platform
- Community information exchange platform (e.g., platform integrating data from and between health care and social service provider)
- Electronic health record with access to physical and behavioral health information
- State data systems and IT platforms
- Population health analytics platform
- Other (please describe in the **Chat starting with “Q4”**)

# Quick Poll #3 Questions

---

**What are the biggest challenges or “pain points” your organization faces today around SDOH? (select all that apply)**

- Multiple screening tools to document SDOH screenings
- Awareness and access to available resources to provide follow up services
- Having adequate workforce and workflow to support SDOH data collection and sharing
- Ability to electronically share data across health and social service organizations
- Monitoring and tracking electronic referrals for needed services
- Administrative burden reporting to payers, state agencies, or other programs
- Broad use of population health analytics tools
- Access to additional non-health data sets
- Other (please describe in Chat starting with “Q5”)

**What are your organization’s top priorities related to health IT and addressing social determinants of health? (select all that apply)**

- Identifying an individual’s social risk factors and determinants through **screenings and assessments**
- **Identifying necessary interventions** for an individual
- Accessing up to date resource directory of available social service organizations
- Coordinating with external, partner organizations, such as community benefit organizations, to support **interventions addressing an individual’s social needs**
- **Enabling electronic referrals** with external organizations
- **Managing and tracking referrals** ensuring individuals get the necessary services
- **Building interoperability** between healthcare and social service organizations for coordination of care, services, benefits
- Analyzing **population health needs and outcomes**
- Other (please describe in Chat starting with “Q6”)

# Quick Poll #4 Questions

---

**Is your organization using data to identify racial disparities and other health inequities within your organization?**

- ☐ Yes
- ☐ No, but we intend to start this practice in the next 12 months
- ☐ No, but we intend to start this practice in the next 24 months
- ☐ No
- ☐ Unsure

**Is your organization using data to identify racial disparities and other health inequities within your community?**

- ☐ Yes
- ☐ No, but we intend to start this practice in the next 12 months
- ☐ No, but we intend to start this practice in the next 24 months
- ☐ No
- ☐ Unsure



# Quick Poll #5 Questions

---

**What are your organization's top priorities related to health IT and addressing health equity and reducing health disparities (select all that apply)**

- Education and information sharing on health inequity for marginalized or underserved populations for leaders and staff to reduce bias and provide effective care
- Hiring additional workforce to support providers and individuals
- Providing multi-lingual patient information electronically or on paper
- Understanding the effects of adverse childhood experiences and use trauma-informed care
- Developing and strengthening structures and processes that understand the causes of health inequity support health equity
- Building decision support tools to help providers and care coordinators navigate available community resources
- Expanding quality improvement programs to monitor and address workflows and measuring outcomes
- Partnering with community organizations
- Expanding data collection to discover and correct disparities for underserved populations' health, such as elderly, women, racial/ethnic minorities, sexual orientation, gender expression, and other dimensions to identify any disparities or unmet needs
- Others (please describe in Chat starting with **"Q9"**)

**What are the biggest challenges or "pain points" your organization faces today around addressing health equity? (select all that apply)**

- Education and information on addressing health inequity for marginalized or underserved populations
- Lack of structures and processes to understand the causes of health inequity
- Need decision support tools to help providers and care coordinators navigate available community resources
- Awareness of community partnerships and organizations available to support patient's needs
- Expanding data collection to discover and correct disparities for underserved populations' health, such as elderly, women, racial/ethnic minorities, sexual orientation, gender expression, and other dimensions to identify any disparities or unmet needs
- Others (please describe in Chat starting with **"Q10"**)

# Quick Poll #6 Questions

---

**If Brenda needed help to find financial assistance for her co-payments and medications, how would your organization support her?**

- Our organization could not support this.
- We would refer her to a care coordinator or social worker to see what benefits she would be eligible for or assist her in applying for financial assistance.
- We would refer her to another organization for assistance (e.g., community benefit organization, community action agency).
- We would use an electronic referral platform to refer her to a community-based organization.
- Others (please describe in Chat starting with **“Q11”**)

**If Brenda missed one of her follow up visits with her Oncologist because her car broke down or she could not find a ride, how would/could your organization support her?**

- Our organization could not support this.
- Our team could find her non-emergency transportation options.
- Our team would refer her to a care coordinator or social worker who could assist her in finding other transportation options or services.
- We would reschedule her treatment based on when she thought she could find a ride.
- Others (please describe in Chat starting with **“Q12”**)

# Quick Poll #7 Question

---

**If Brenda was suffering from stress or depression due to her health issues, how/could your organization support her?**

- Our organization could not support this.
- Our team would screen, assess, and refer her to a mental health provider on the team or in the organization.
- Our team would screen, assess, and refer her to an external mental health provider.
- Our team would refer her to a care coordinator or social worker who could assist her with finding options for mental health services.
- Others (please describe in Chat starting with **“Q13”**)