

**Michigan Department of Health and Human Services  
Integrated Care Division**



**Enrollment Dashboard  
November 2018**

## I. Terminologies and Definitions

### **Passive Eligibility:**

Individuals who meet the full criteria to be passively enrolled into MI Health Link Program

### **Enrollment:**

Individuals currently enrolled in MI Health Link

### **Passive Enrollment:**

An enrollment process where an eligible person is enrolled by the Michigan Department of Health and Human Services (MDHHS), or its vendor Michigan ENROLLS, into an Integrated Care Organization (ICO), also known as a 'health plan', following a minimum 60-day advance notification. Eligible individuals are automatically enrolled if they do not choose to cancel their enrollment.

- PACE, MI Choice, and MI Care Team participants, as well as people with union or employer sponsored retirement plans, and those identified as Native American, Alaskan, or migrant are not eligible for passive enrollment, however they can choose to enroll in MI Health Link voluntarily.

### **Voluntary disenrollment:**

People who were enrolled in MI Health Link in a previous month who are no longer enrolled in a current month. They are still MI Health Link eligible (Full Medicaid, Medicare, no hospice, lives in the demo regions, etc.)

### **Involuntary disenrollment:**

People who were enrolled in MI Health Link in a previous month who are no longer enrolled in a current month. They are NOT eligible in a current month (moved out of area, death, but most likely due to loss of MA eligibility). People who are deemed are NOT included in involuntary disenrollment.

## I. Terminologies and Definitions Continued

### Deeming:

When a beneficiary loses full Medicaid eligibility, but does not regain lessor Medicaid coverage, they move to a deemed status for up to 3 months before losing MI Health Link coverage. They will continue to receive Medicare and Medicaid services through their MI Health Link health plan during the deeming period. If the beneficiary does not regain full Medicaid eligibility by the end of the deeming period, they will be disenrolled.

### PET (Program Enrollment Type):

State-specific codes that indicate level of healthcare service needs and beneficiary living arrangements

PET Code	Definition
HCBS	Receiving Home and Community based services
CMCF	Residing in County Medical Care Facility (CMCF)
NFAC	Residing in Nursing Facility (not CMCF)
COMM	Living in the Community
HOSW	Receiving Home and Community based services and receiving Hospice services at home
HOSN	Receiving Hospice in a Nursing Facility (not CMCF)
HOSH	Receiving Hospice at home
HOSR	Receiving Hospice in a Hospice Residence Facility
HOSC	Receiving Hospice in CMCF

## I. Terminologies and Definitions Continued

### **Health Plan Abbreviations:**

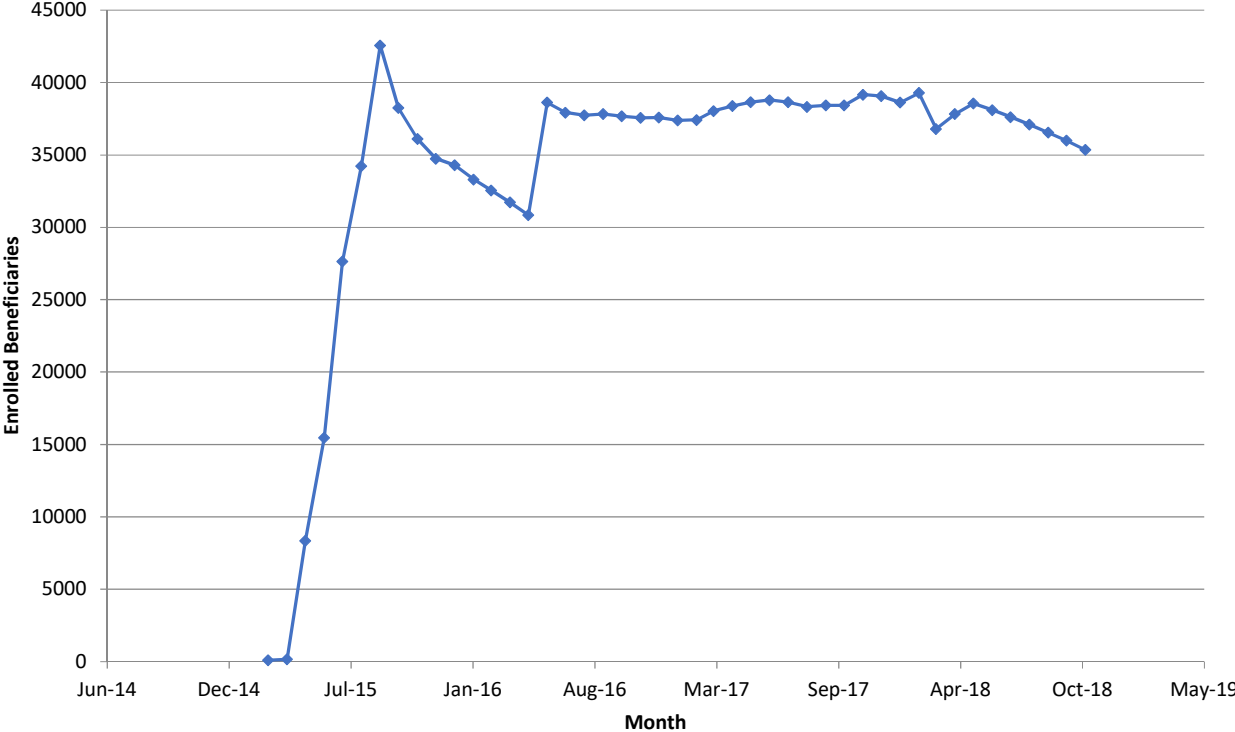
Throughout the dashboard, the below abbreviations will be used to represent the MI Health Link health plans

Abbreviation	Health Plan
AET	Aetna Better Health of Michigan
AME	AmeriHealth Michigan, Inc.
HAP	HAP Midwest Health Plan, Inc.
MER	Meridian Health Plan of Michigan
MIC	Michigan Complete Health, Inc.
MOL	Molina Healthcare of Michigan, Inc.
UPP	Upper Peninsula Health Plan

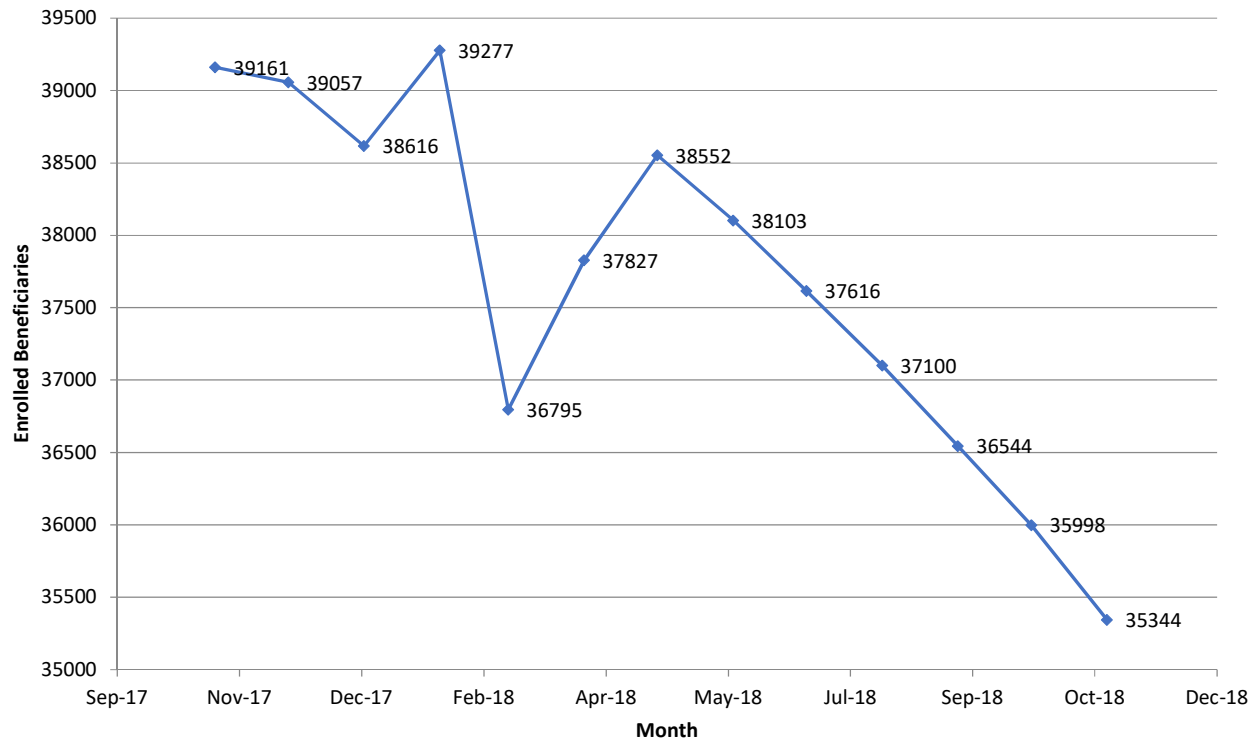
# Beneficiaries Enrolled as of November 2018

	Total Enrollment
Region 1 (Upper Peninsula)	4067
Region 4 (Southwest)	8183
Region 7 (Wayne)	18580
Region 9 (Macomb)	4514
All Regions	35344

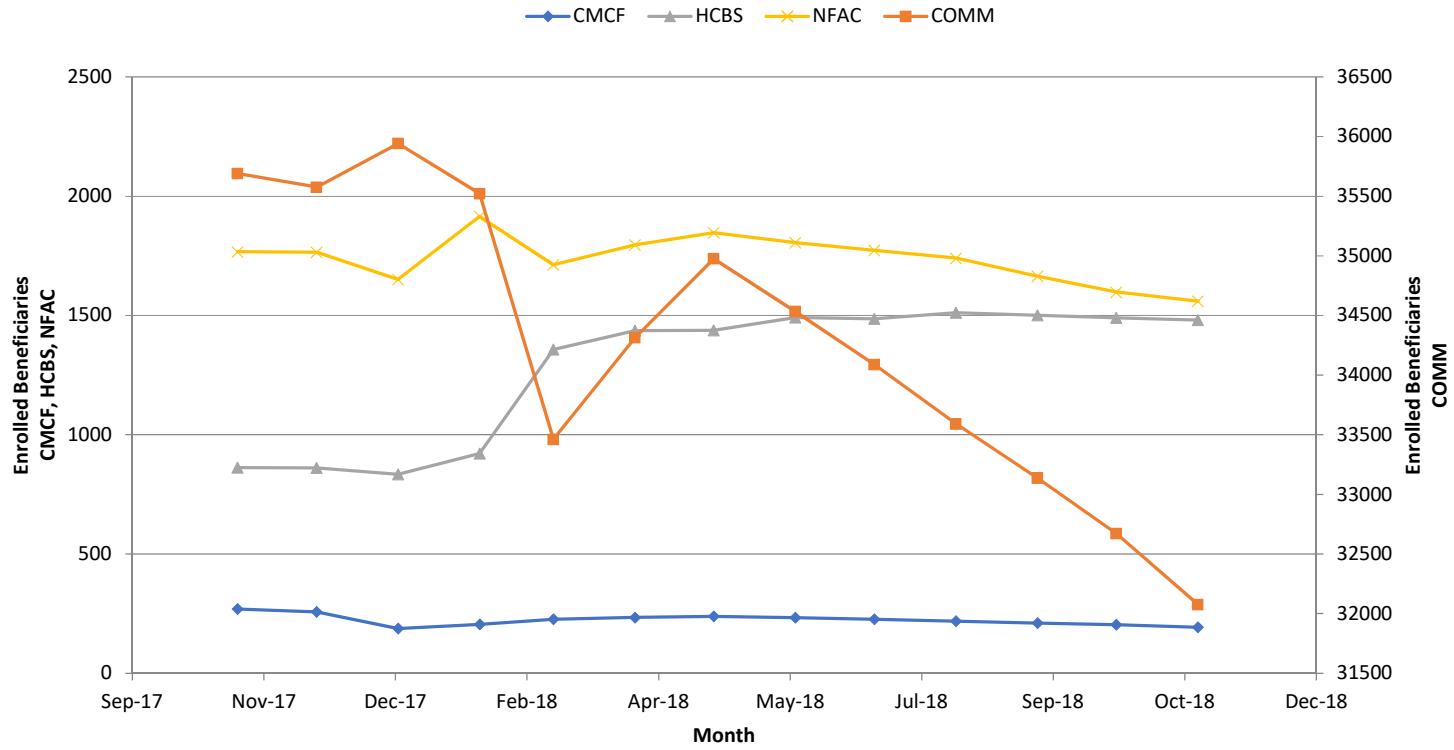
### Enrollment Over Program Duration



### Enrollment in Past Year

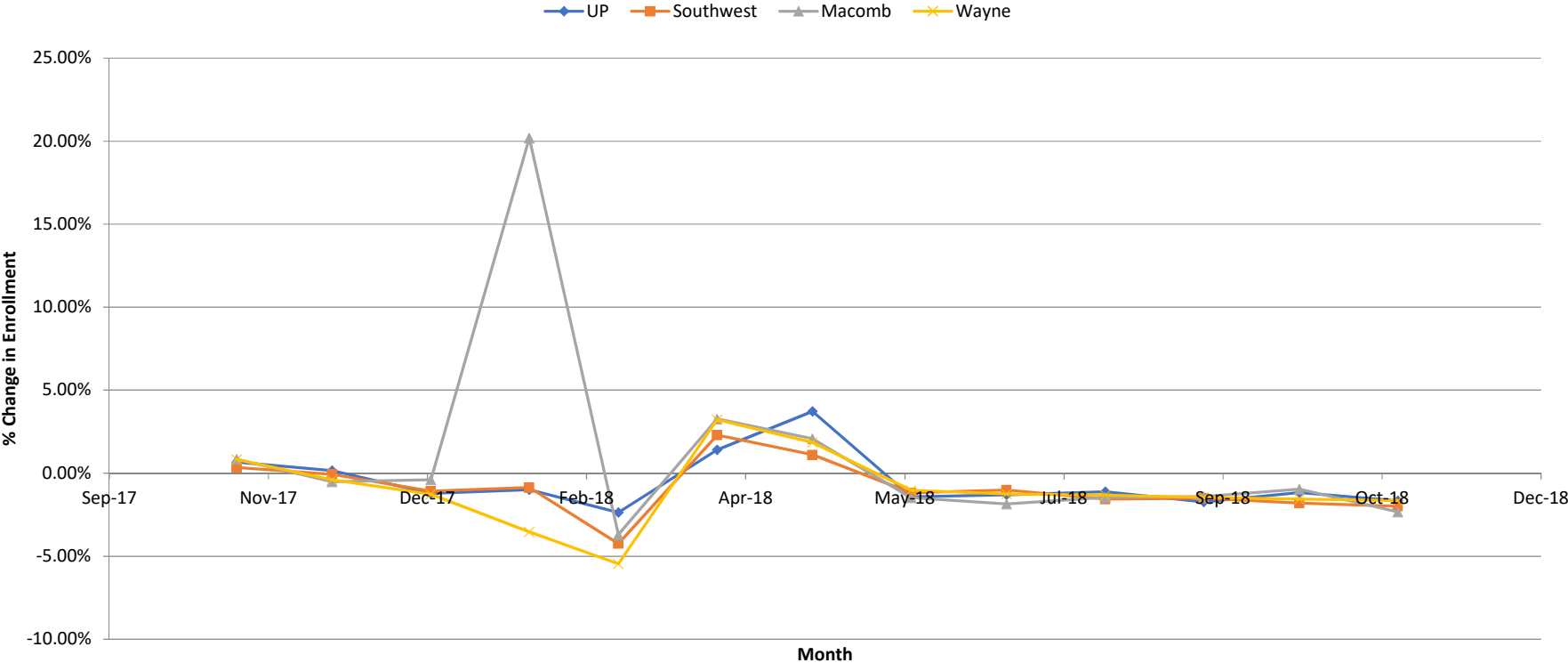


### PET Enrollment - Past Year

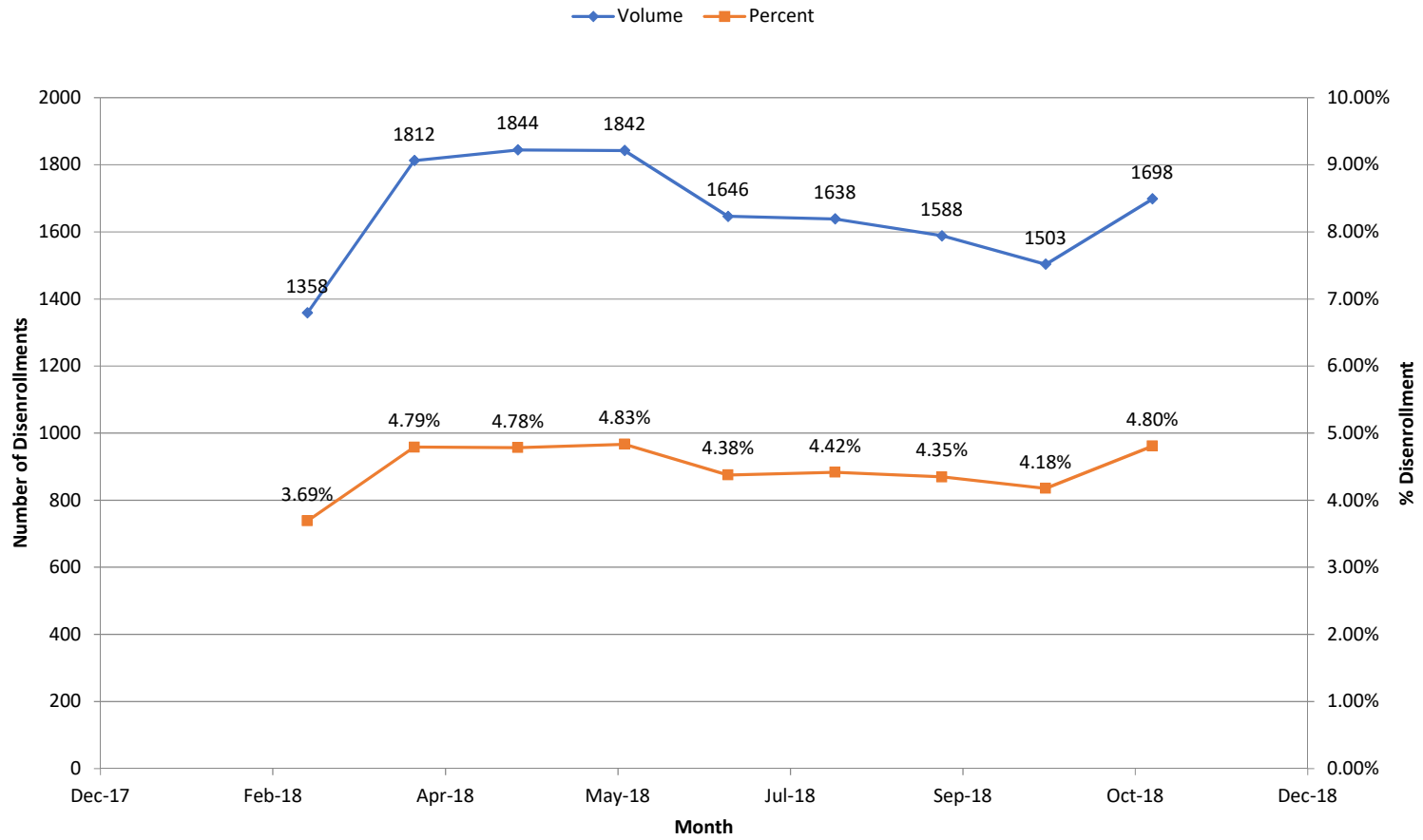




### Percent Change in Enrollment, Past Year

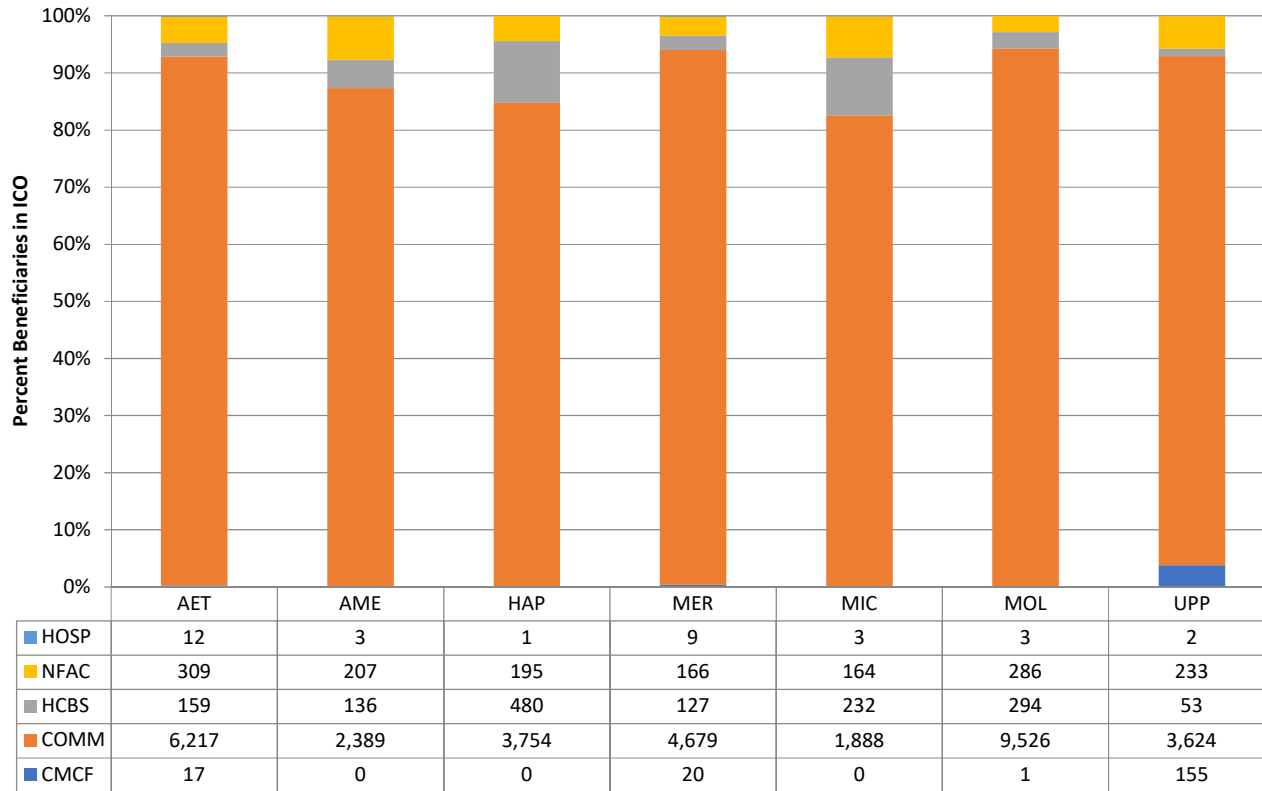


# Disenrollment Trends



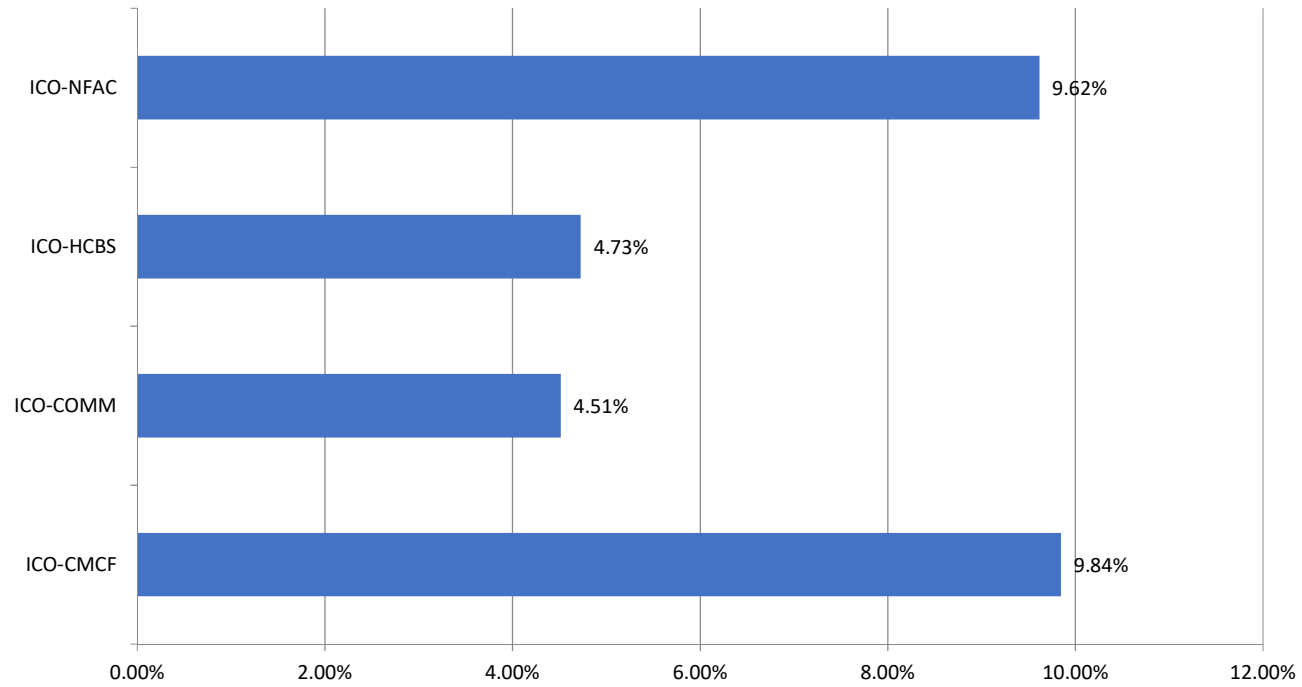
# Breakdown by PET

### Enrollment by PET, ICO



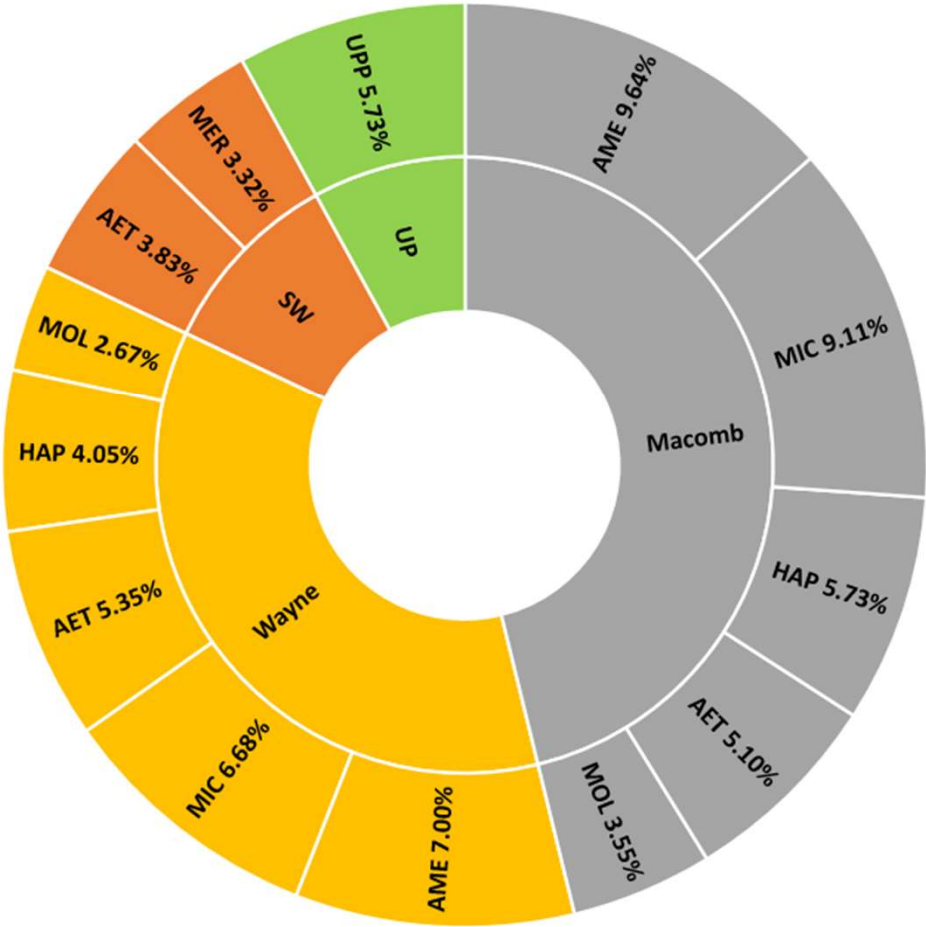
## Disenrollment Past Month

### As % of Program PET Enrollment

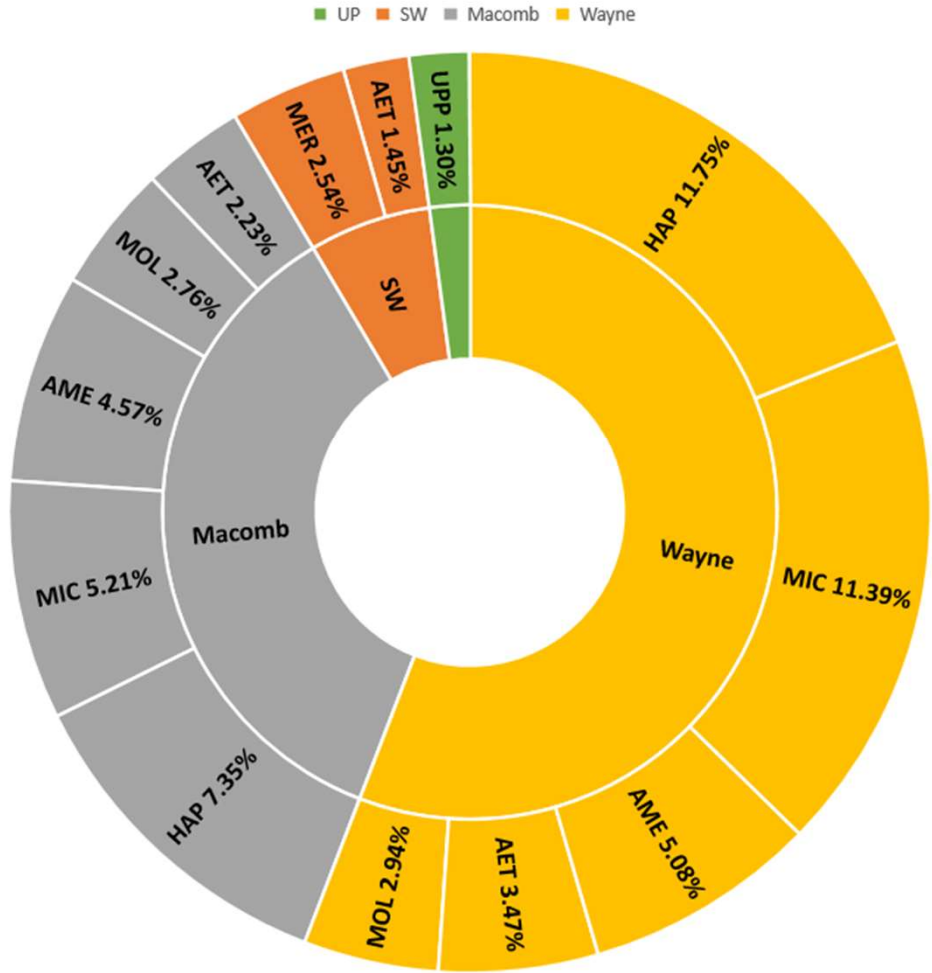


NFAC Enrollment by Plan, Region  
(% of Plan Enrollees)

UP SW Macomb Wayne



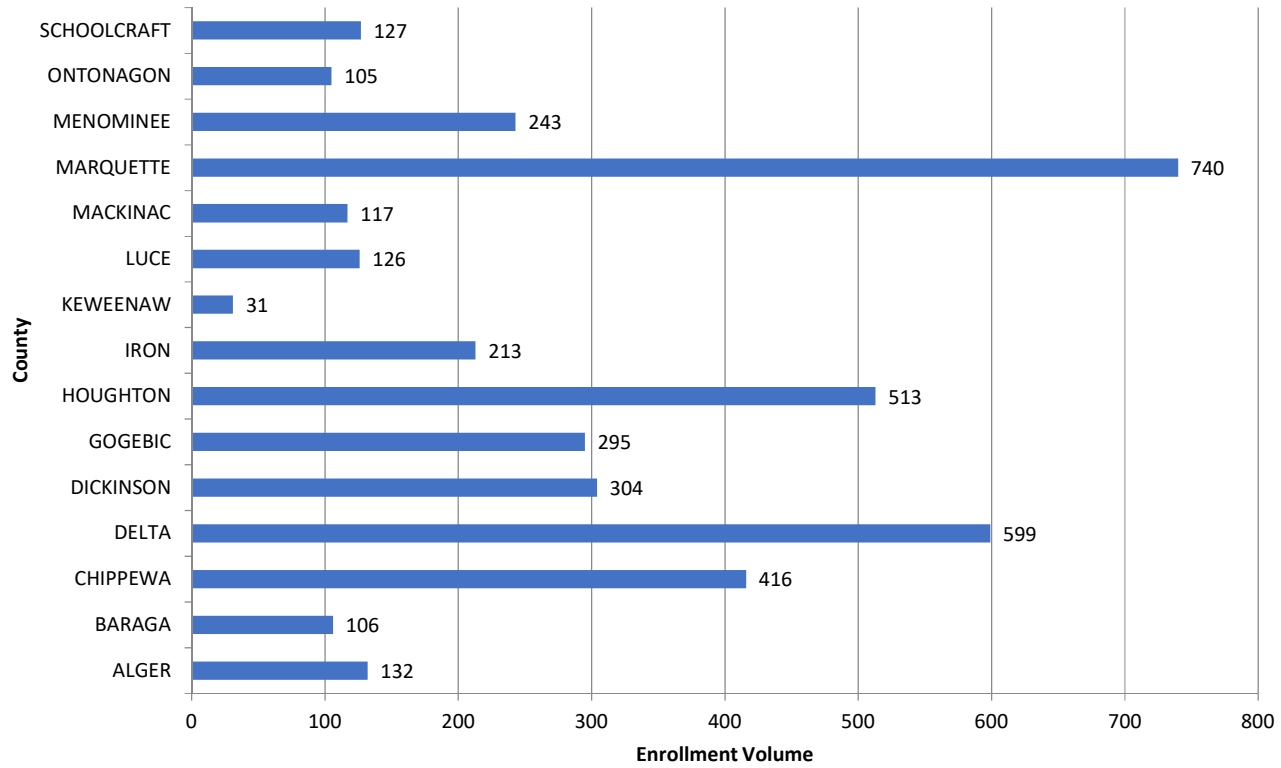
HCBS Enrollment by Plan, Region  
 (% of Plan Enrollees)



# County Breakdown Region 1 – Upper Peninsula

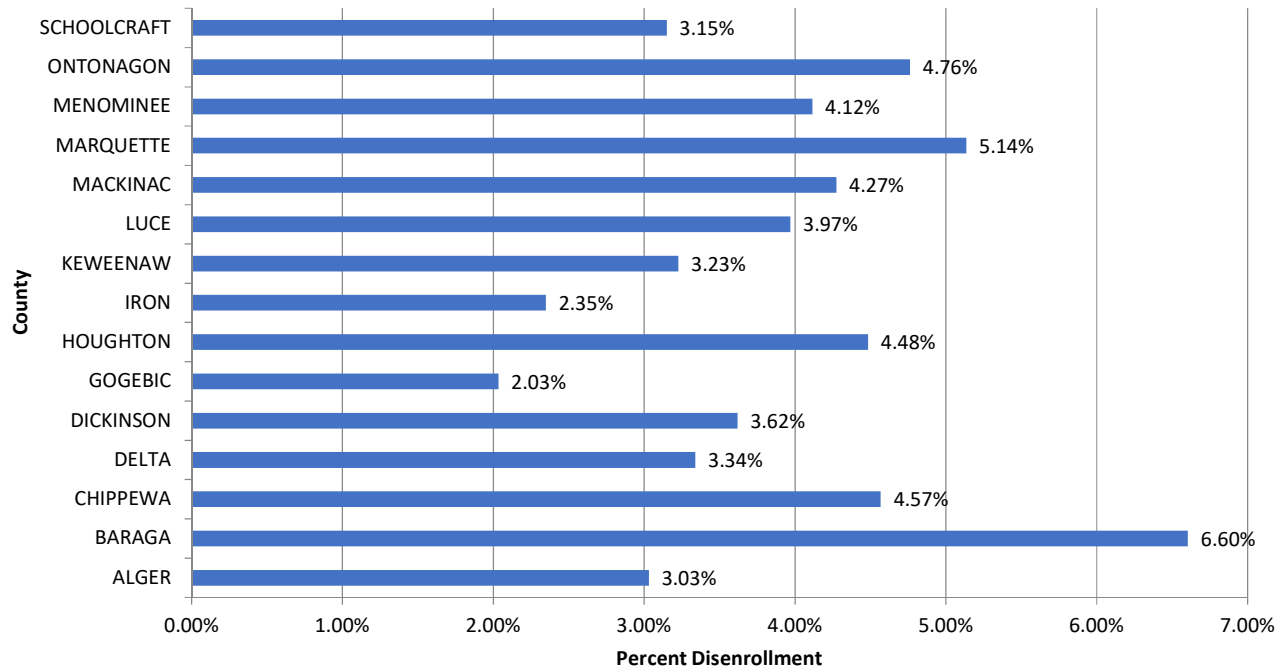


## Region 1 (UP) Enrollment

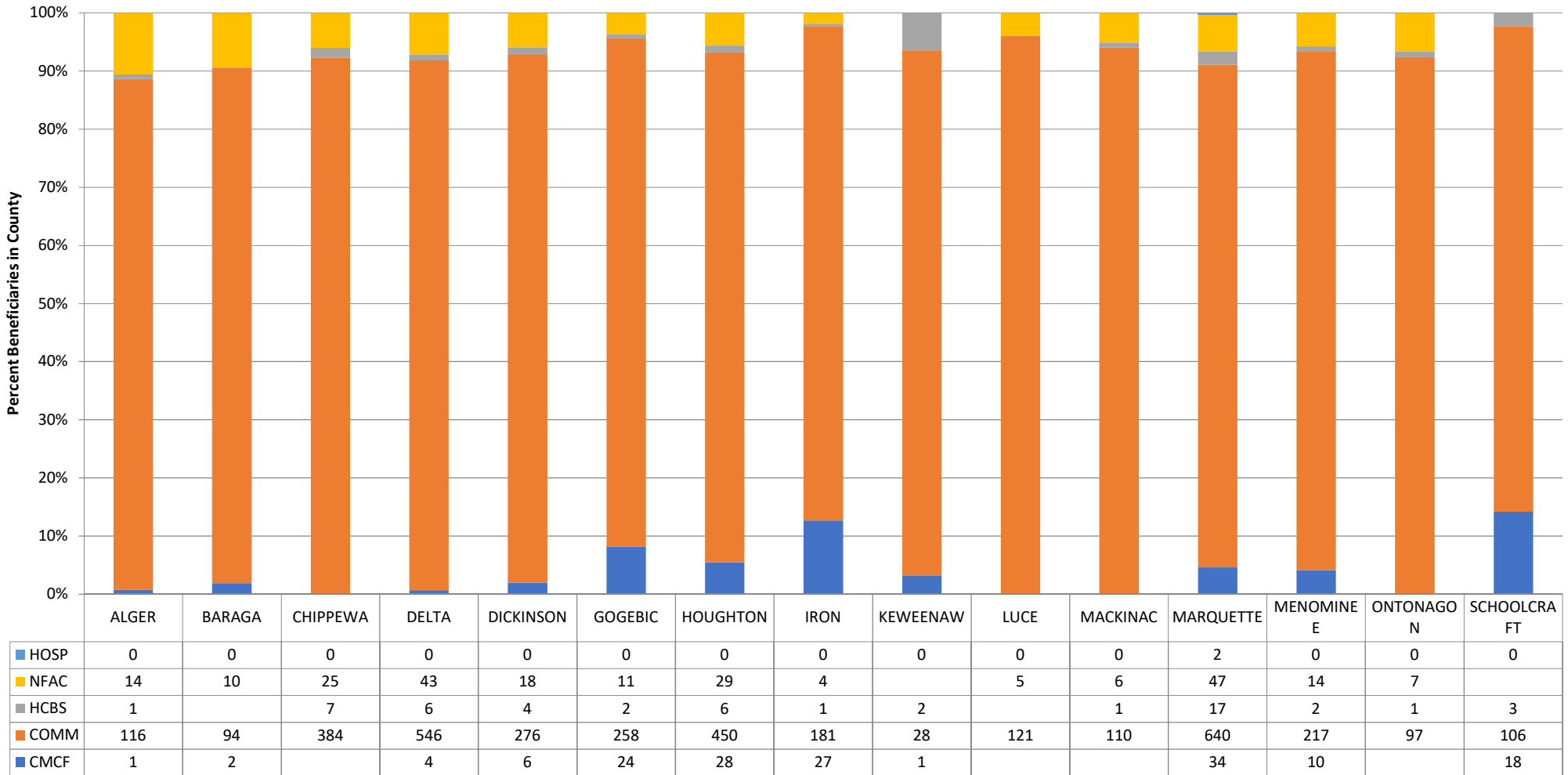


## Disenrollment Past Month

### As Percent of County Enrollment

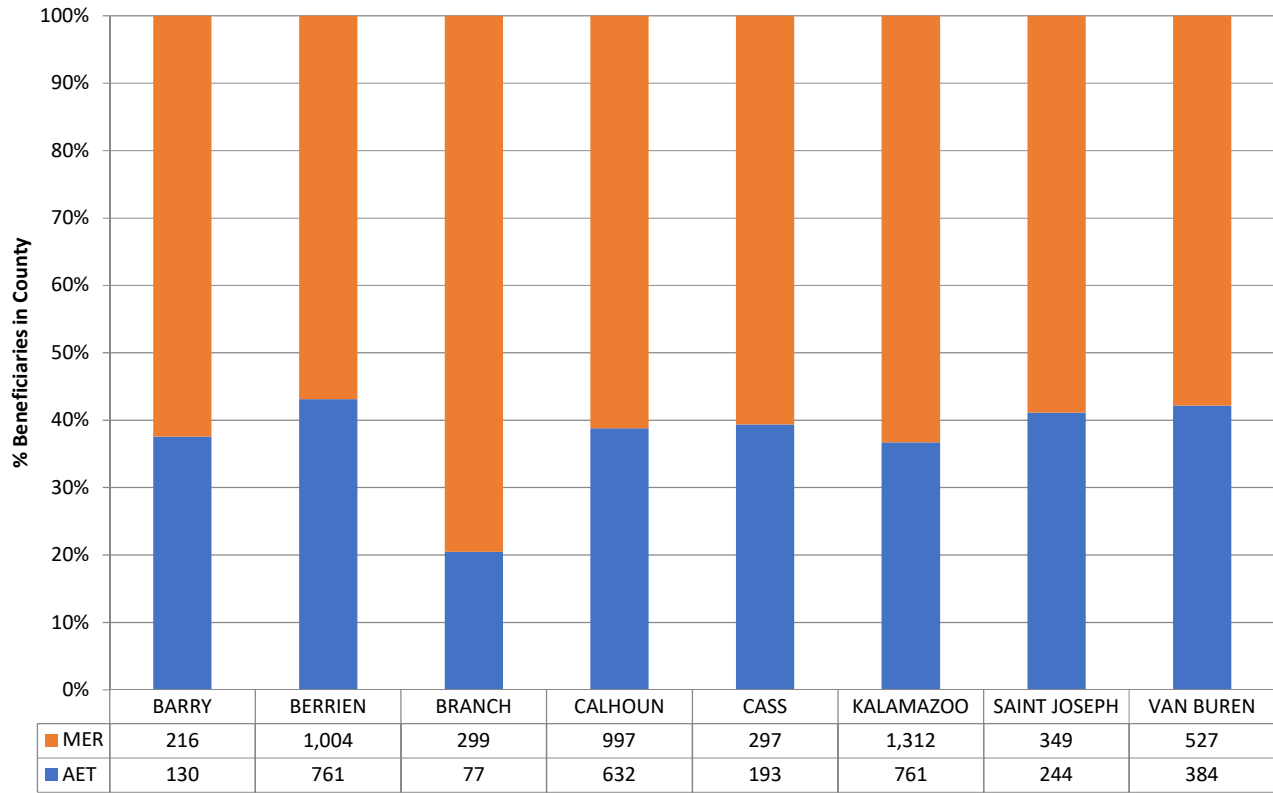


## Enrollment by PET



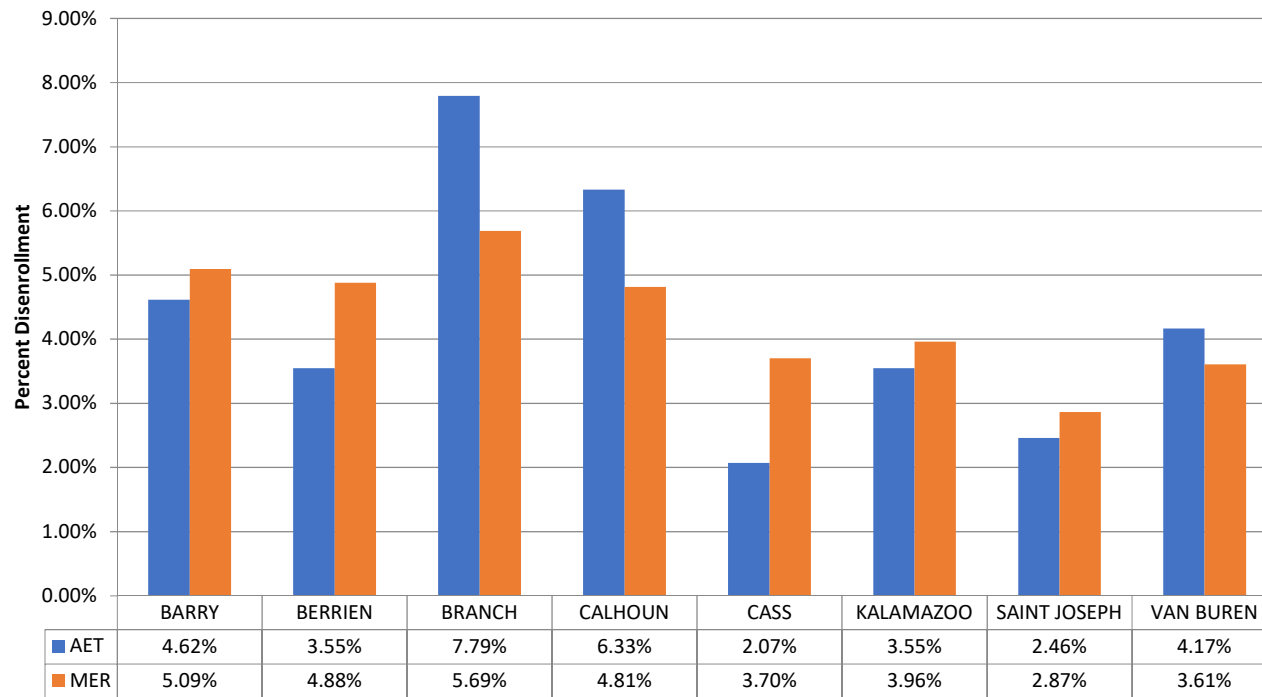
# County Breakdown Region 4 - Southwest

### Region 4 (SW) Enrollment

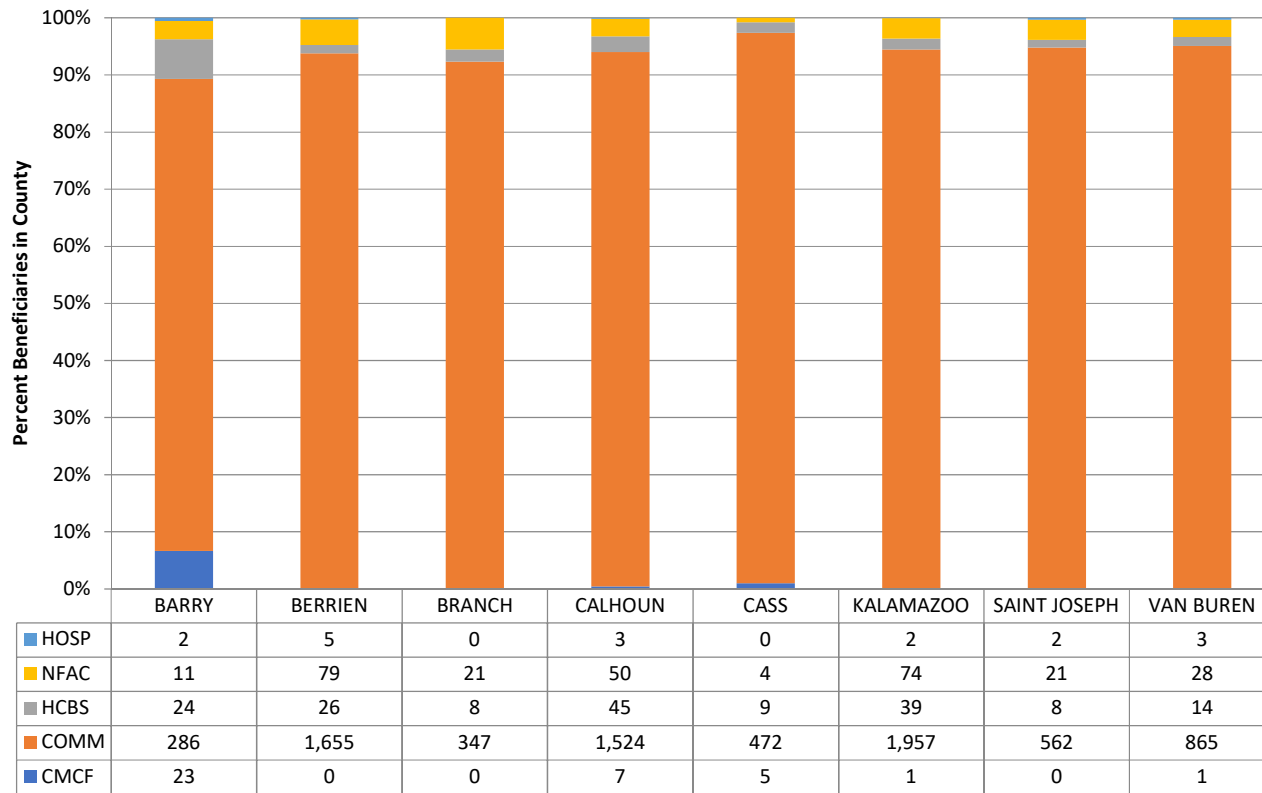


## Disenrollment Past Month

### As Percent of County Enrollment in ICO



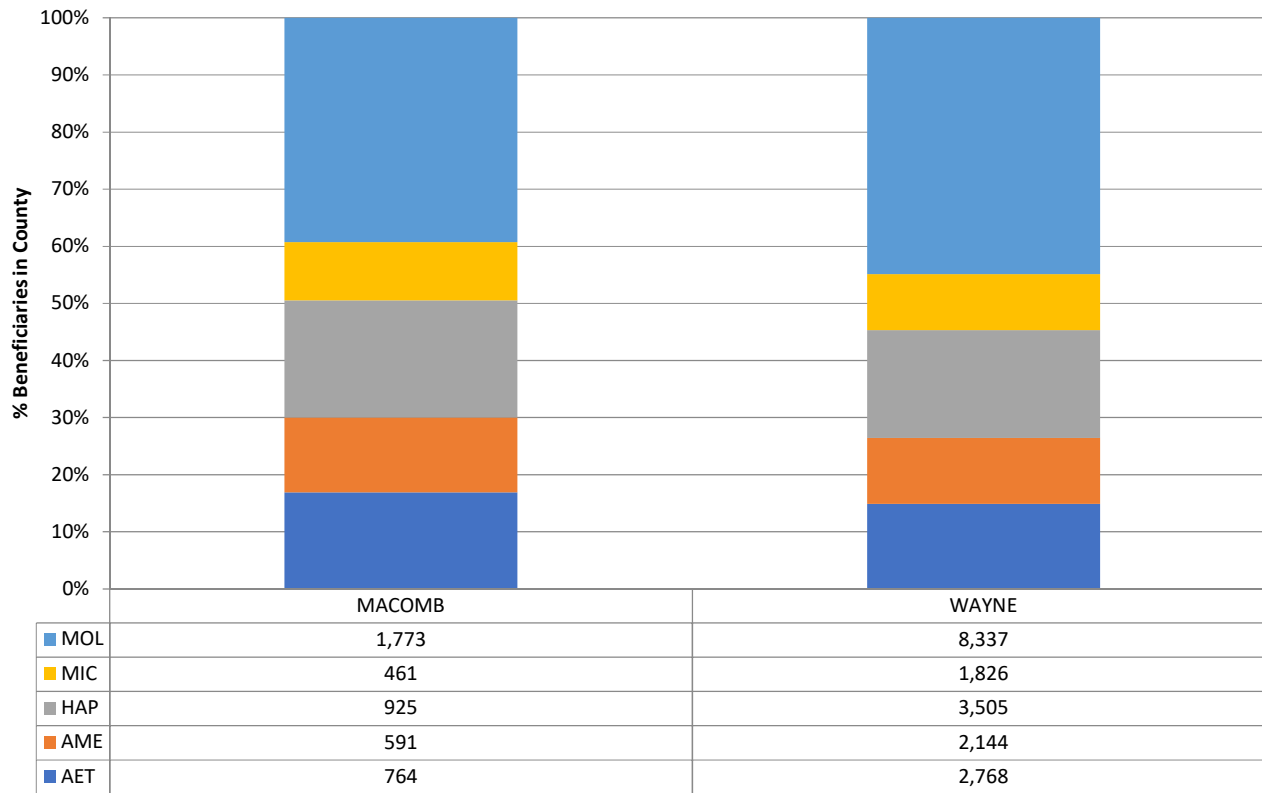
### Enrollment by PET



# County Breakdown Regions 7 & 9 – Wayne and Macomb

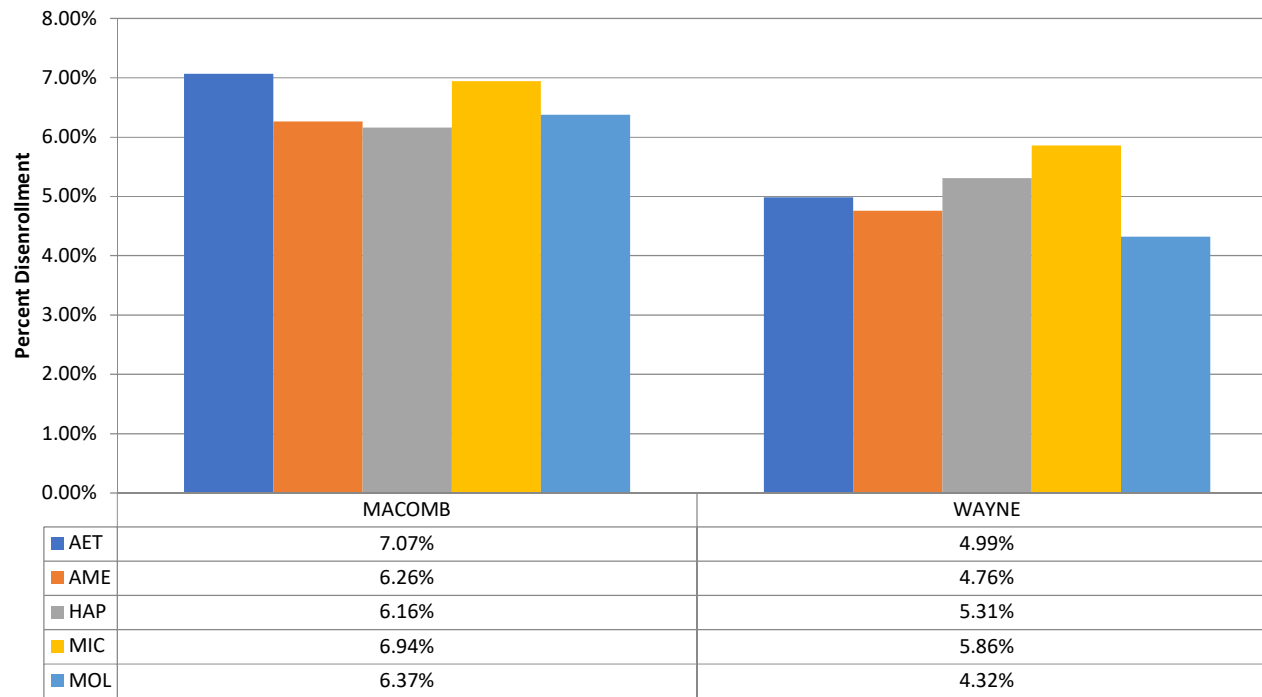


### Regions 7 & 9 (Wayne & Macomb) Enrollment



## Disenrollment Past Month

### As Percent of County Enrollment in ICO



### Enrollment by PET

