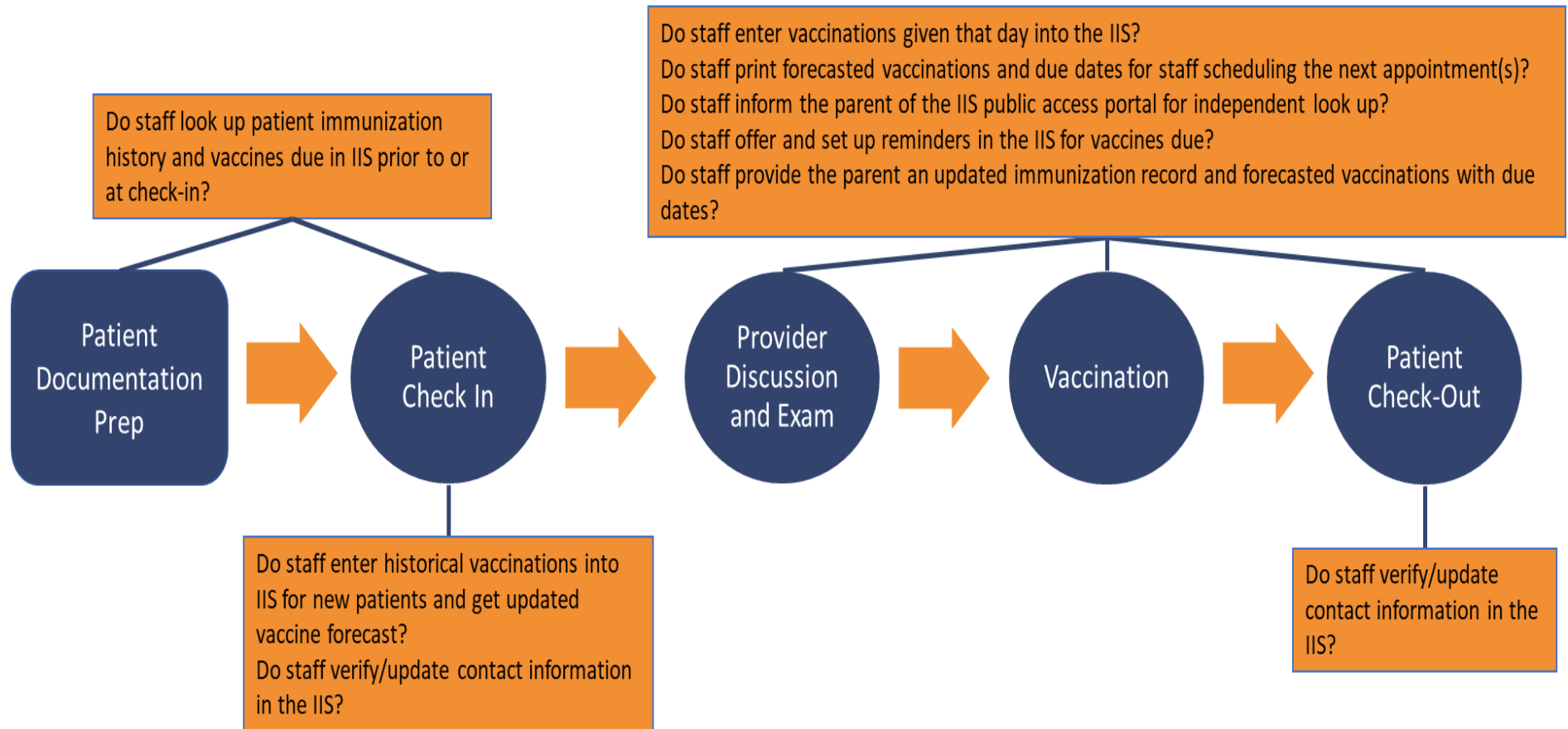


Assessing Processes for Leveraging the Immunization Information System (IIS) – Direct Data Entry



Data quality issues to consider:

1. Do staff routinely check to ensure the clinic is reporting immunizations to the IIS in a timely manner?
2. Do staff routinely review coverage or patient lists for missed opportunities, invalid doses, and patients not UTD?
3. Do staff regularly check patients' active/inactive status in the IIS and update when needed?
4. Do staff perform spot checks for completeness and accuracy of clinic immunization records in the IIS?