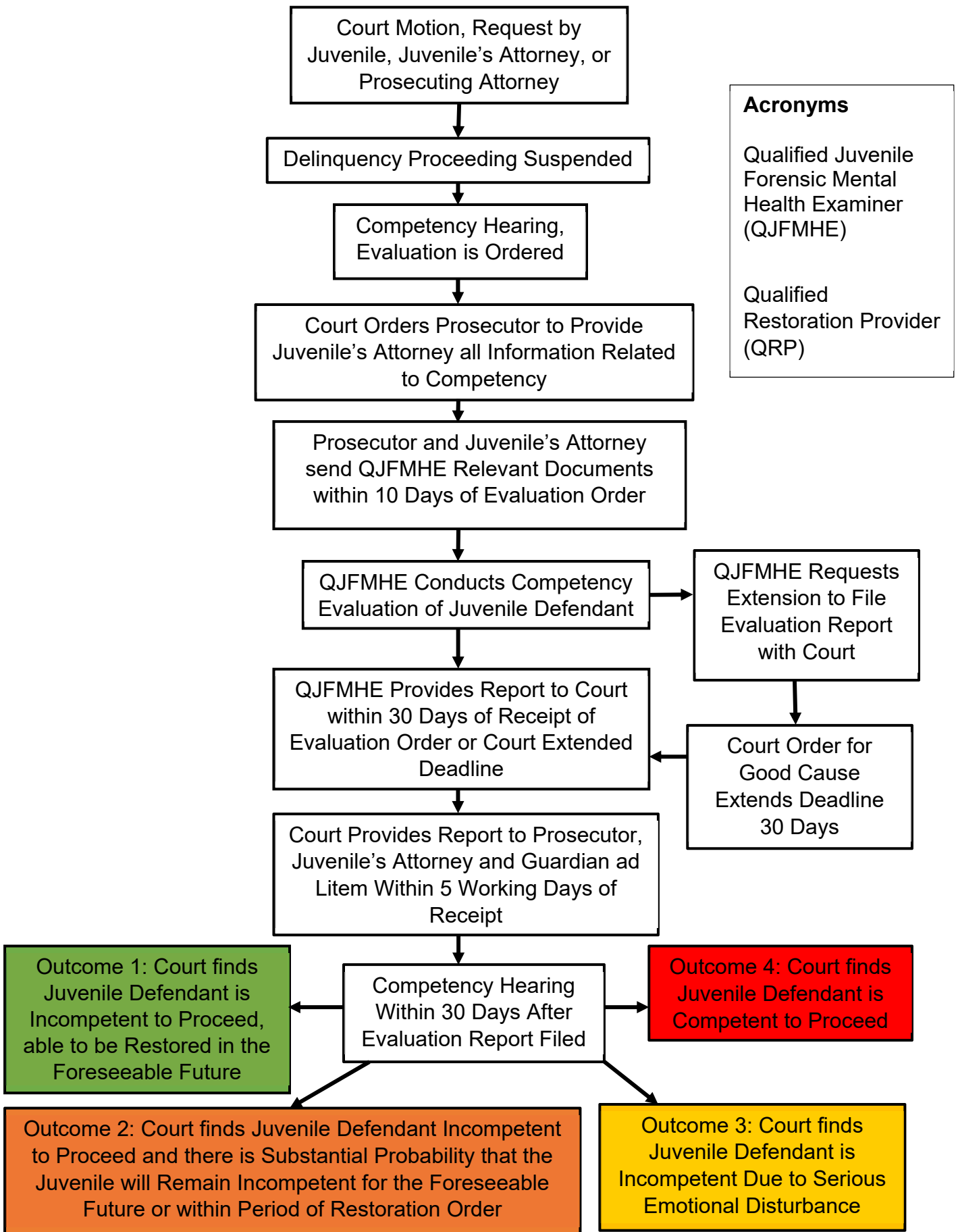


JUVENILE COMPETENCY EVALUATION/RESTORATION PROCESS FLOW CHART

Michigan Department of Health and Human Services



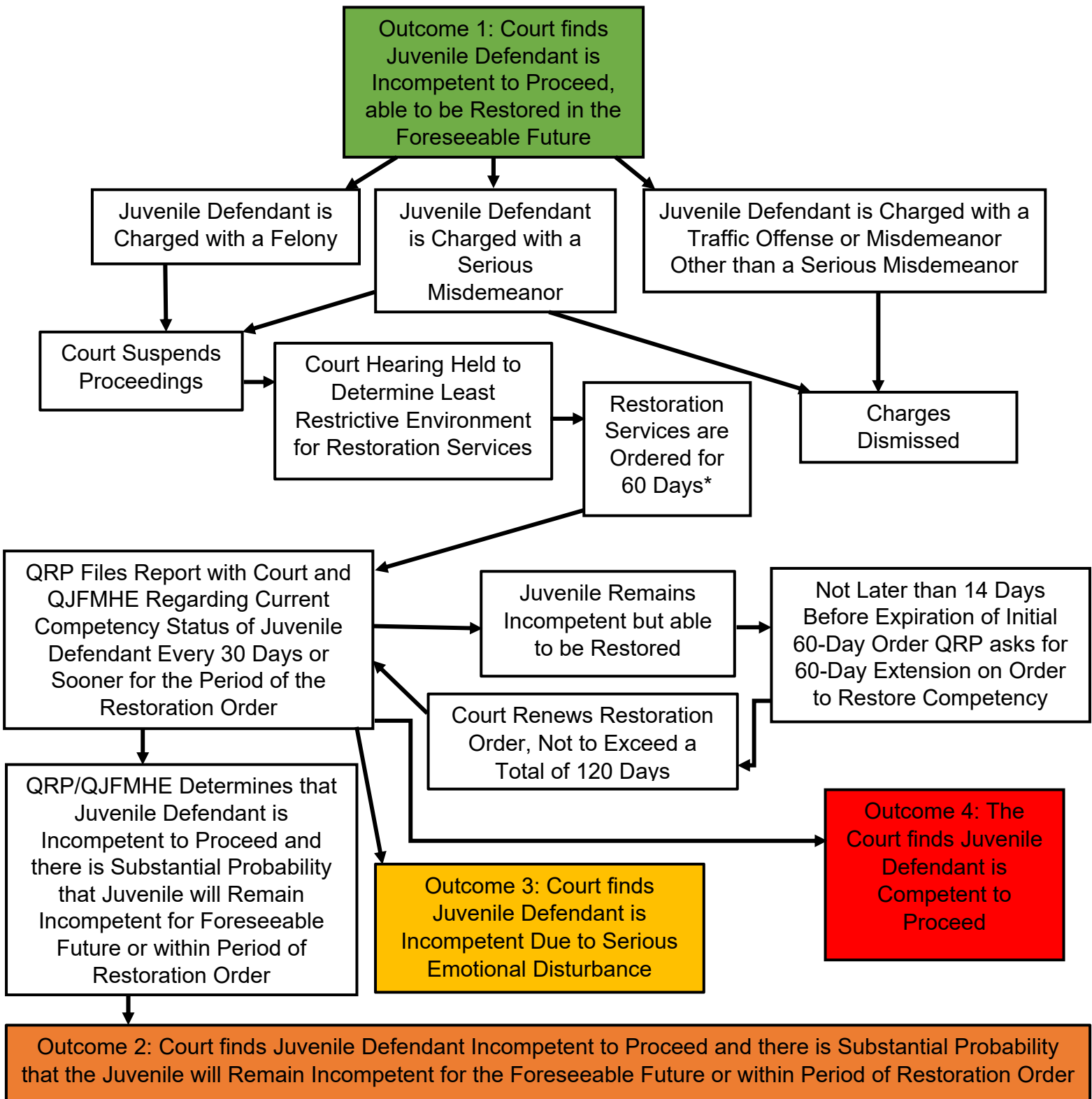
Acronyms

Qualified Juvenile Forensic Mental Health Examiner (QJFMHE)

Qualified Restoration Provider (QRP)

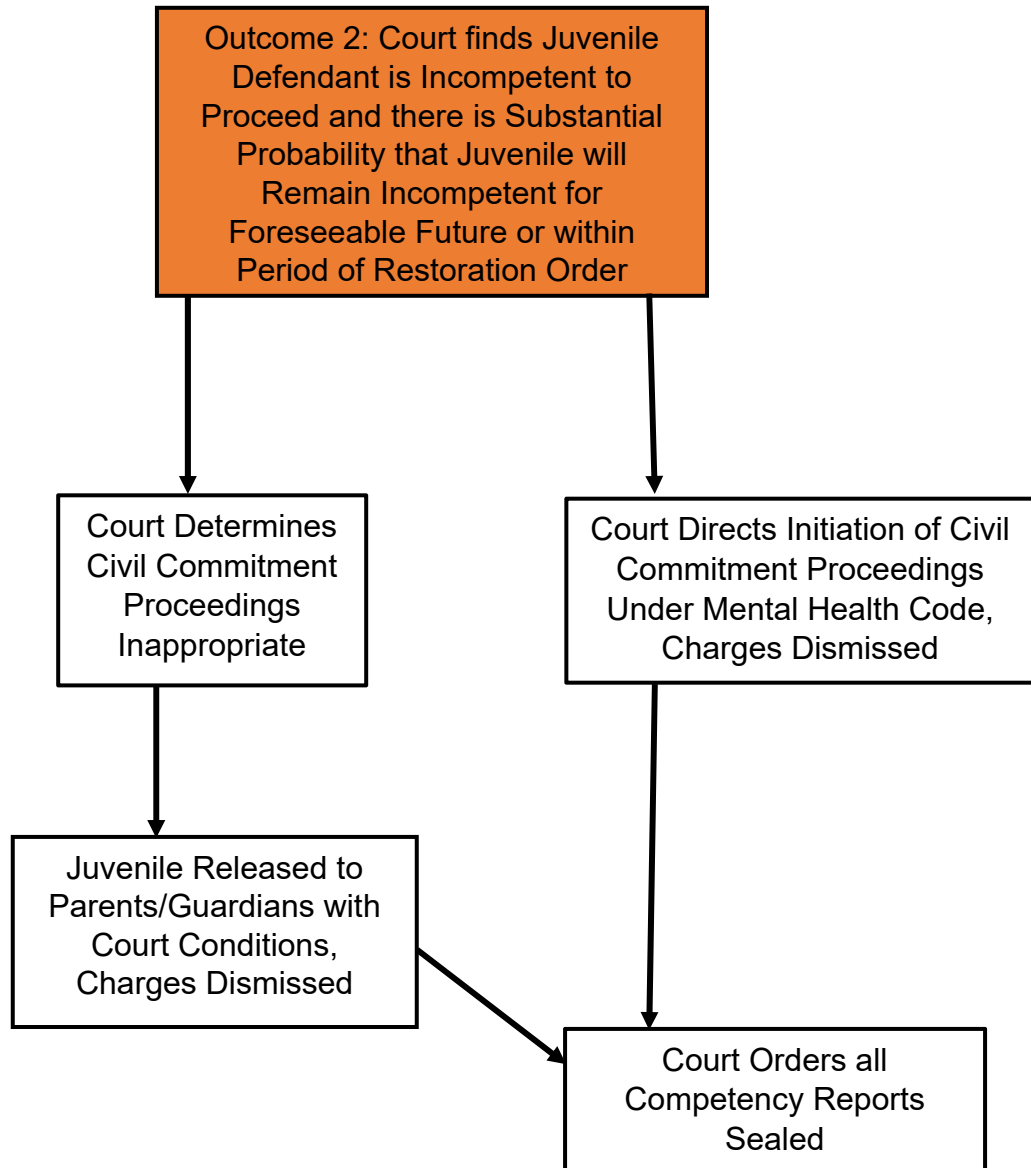
JUVENILE COMPETENCY EVALUATION/RESTORATION PROCESS FLOW CHART

Michigan Department of Health and Human Services

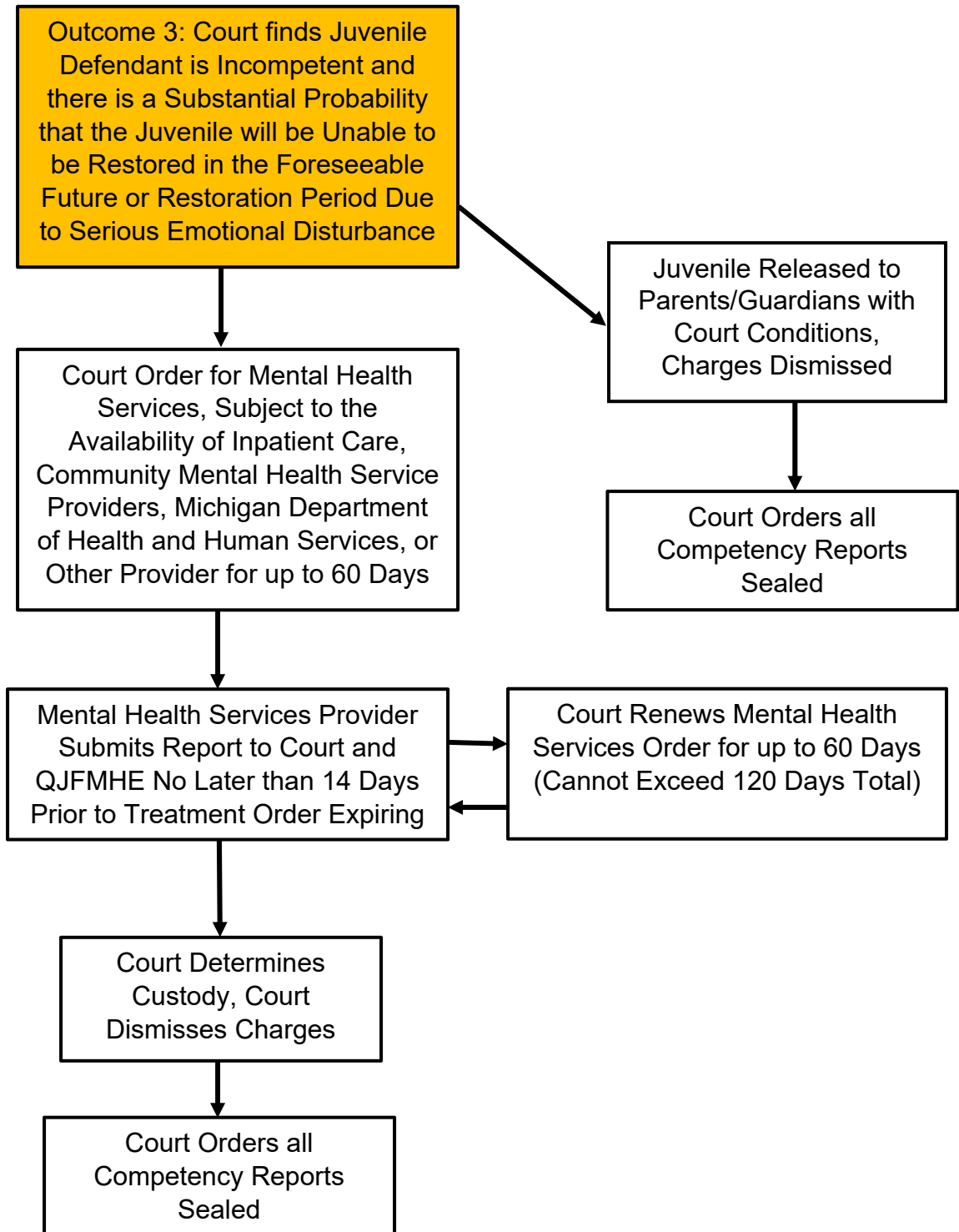


*The court may issue a restoration order for 60 days from the date of initial finding of incompetency or until 1 of the following occurs, whichever occurs first: the QJFMHE, based on information provided by the QRP, submits a report that the juvenile has regained competency or that there is no substantial probability that the juvenile will regain competency within the period of the order, the charges are dismissed, or the juvenile reaches 18 years old.

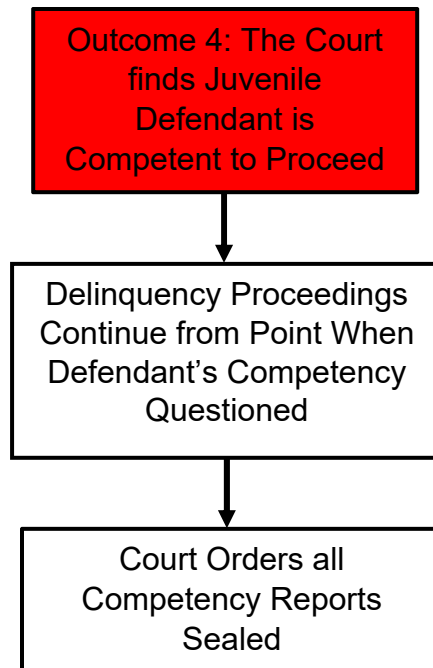
JUVENILE COMPETENCY EVALUATION/RESTORATION PROCESS FLOW CHART
Michigan Department of Health and Human Services



JUVENILE COMPETENCY EVALUATION/RESTORATION PROCESS FLOW CHART
Michigan Department of Health and Human Services



JUVENILE COMPETENCY EVALUATION/RESTORATION PROCESS FLOW CHART
Michigan Department of Health and Human Services



The Michigan Department of Health and Human Services (MDHHS) does not discriminate against any individual or group because of race, religion, age, national origin, color, height, weight, marital status, genetic information, sex, sexual orientation, gender identity or expression, political beliefs or disability.