



Michigan Flu Focus

Weekly Influenza Surveillance Report



Editor: Seth Eckel, MPH
Co-Editor: Macey Ladisky

Editor Email: EckelS1@michigan.gov

January 19, 2018

Vol. 15; No. 14

Week Ending January 13, 2018 | WEEK 2

Michigan Influenza Activity

No Activity

Sporadic

Local

Regional

Widespread

*Clicking on the current activity level will direct you to the CDC webpage defining each activity level for the geographic spread of influenza

Influenza-associated Pediatric Mortality

No pediatric influenza deaths have been confirmed to date by MDHHS during the 2017-2018 flu season. Nationally, thirty (30) influenza-associated pediatric deaths have been reported thus far for the 2017-2018 flu season.

Updates

GSK, a global healthcare company, receives FDA approval of Fluarix flu vaccine for an expanded age indication from 3 years of age down to 6 months of age or older.

A company in the UK is currently leading a clinical trial of what could be the first universal flu vaccine in the world. The goal of the vaccine is to have massive benefits for global public health and eliminate the need for annual injections.

See the FluBytes section to learn more!

FluBytes

- [GSK Fluarix Flu Vaccine Approved for Expanded Age Indication to 6 Months of Age with 0.5mL Dosage](#)
- [The World's First Universal Flu Vaccine Is Already Undergoing Clinical Trials](#)
- [Flu Activity Still Rising, but CDC Warns Many Weeks of Activity Ahead](#)
- [As Flu Spreads in Metro Detroit and Nationwide, Young Visitors Not as Welcome in Hospitals](#)

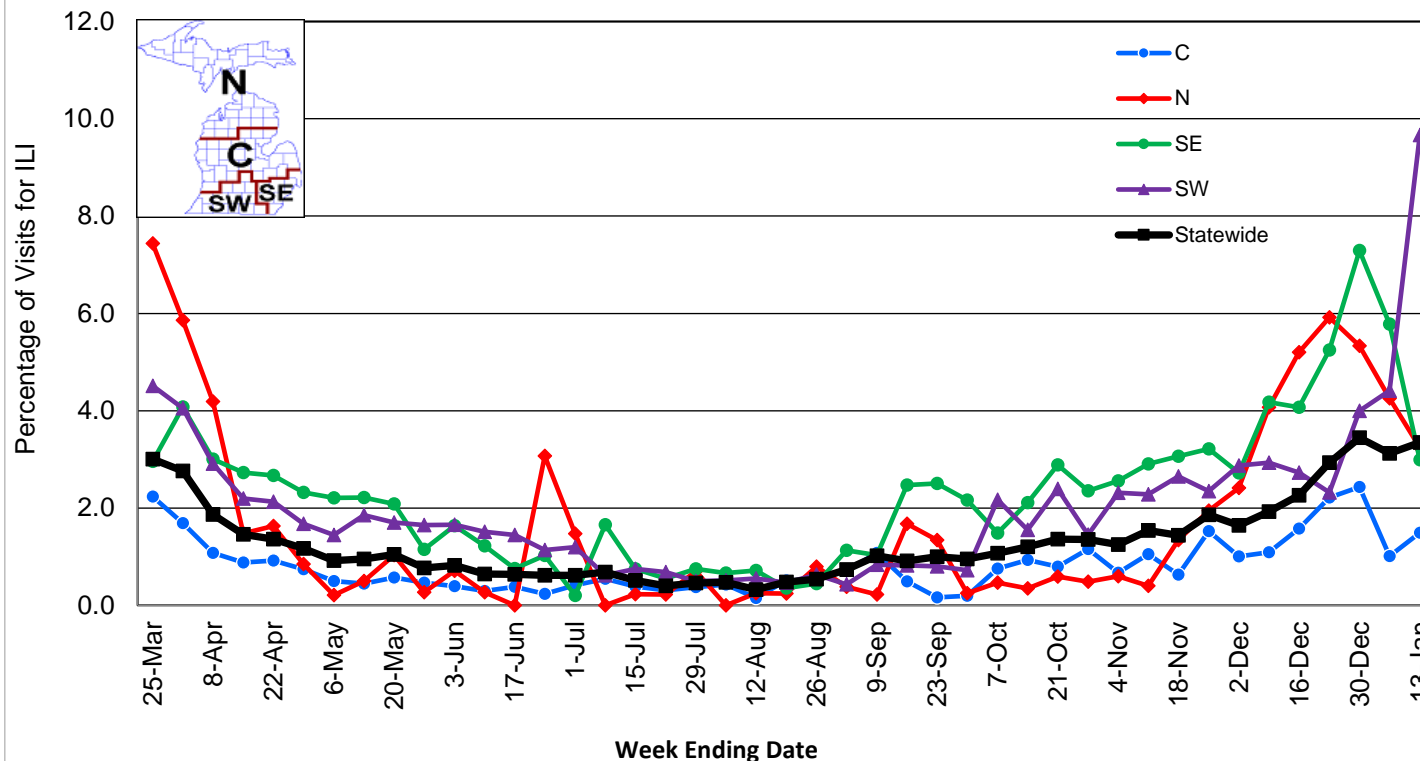
Sentinel Provider Surveillance

- Number of reports by region: 24 total [C(6), N(2), SE(10), SW(6)]
- Proportion of visits due to ILI: ↑ 3.3 % (regional baseline*: 1.8%)
- A total of 273 patient visits due to ILI were reported out of 8,161 office visits

*Regional baseline is developed by calculating the mean percentage of patient visits for ILI during non-influenza weeks for the previous three seasons and adding two standard deviations.

Become a Sentinel Provider! Contact:
EckelS1@michigan.gov

**Percentage of Visits for Influenza-like Illness (ILI)
Reported by Sentinel Providers, Statewide and Regions
2016-17 and 2017-18 Flu Seasons**



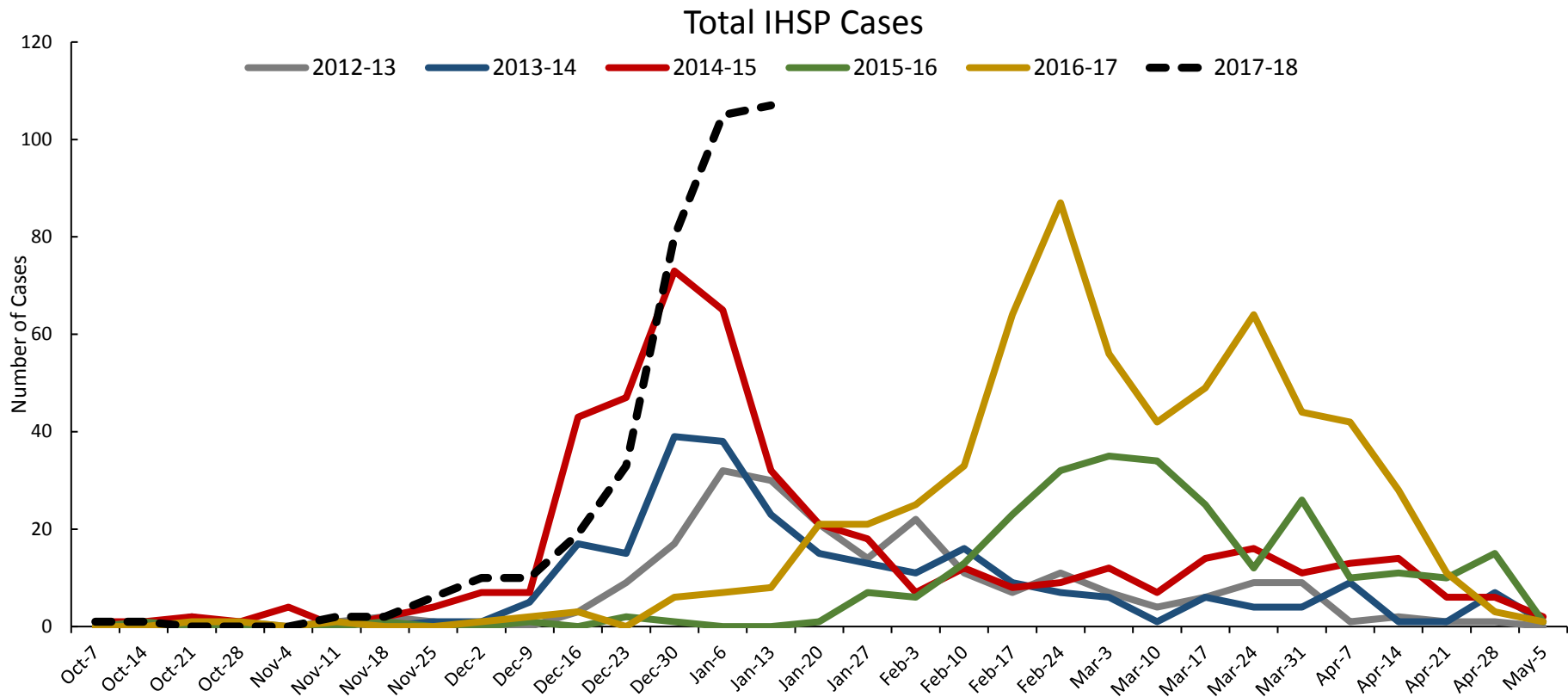
National Surveillance

In the United States, 6.3% of outpatient visits were due to influenza-like illness, which is above the national baseline of 2.2%.

Influenza-related Hospitalization Surveillance

Influenza Hospitalization Surveillance Project

The CDC Influenza Hospitalization Surveillance Project (IHSP) provides population-based rates of hospitalization due to severe influenza-related illness through active surveillance and chart review of lab-confirmed cases from Oct. 1, 2017 until Apr. 30, 2018, for Clinton, Eaton, Ingham, Genesee, and Washtenaw counties. Since Oct. 1, there have been a total of **376 (25 pediatric, 351 adult)** influenza-related hospitalizations reported in the catchment area for the 2017-2018.



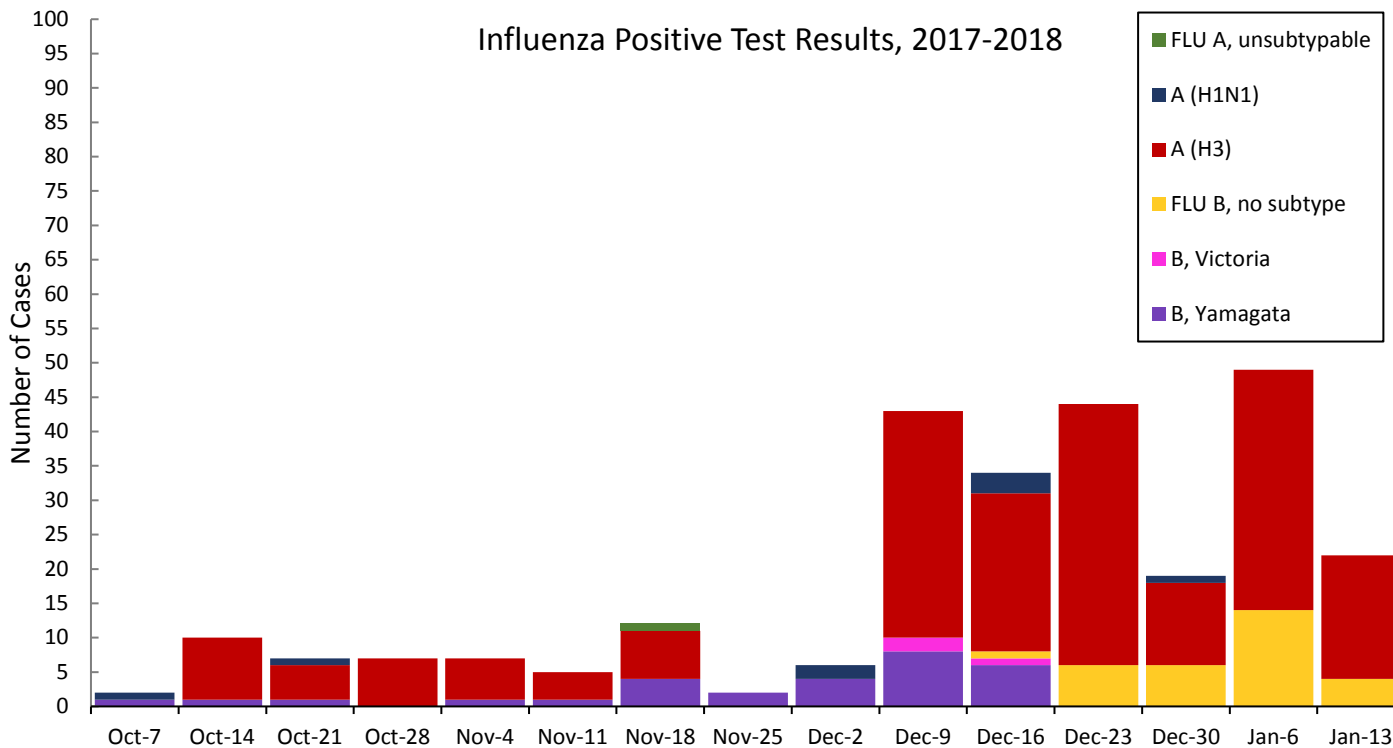
Genesee County was added in 2012-2013

Washtenaw County was added in 2017-2018

Laboratory Surveillance

MDHHS Bureau of Laboratories reported 65 new positive influenza results (48 A/H3, 5 A/H1 & 12 flu B) during this time period. A total of 318 positive influenza results have been reported for the 2017-18 season.

Respiratory Virus	# Positive Respiratory Virus Results by Region				Total
	C	N	SE	SW	
2009 A/H1N1pdm	1	1	9	2	13
Influenza A/H3	83	25	76	61	245
Influenza B	5	8	33	14	60



*Based on STARLIMS MDHHS BOL Testing Portal

Note: Flu B subtyping will be reported based on MDHHS BOL testing runs (roughly each month) and will be backtracked into this graph
 Most recent MDHHS BOL Flu B subtyping run: **January 9th, 2018.**

Sentinel Clinical Lab Activity

Ten (10) sentinel clinical labs (3SE, 2SW, 5C, 0N) reported the following influenza testing results for the current week:

SE Region

- Influenza A: sharply elevated/sharply increasing
- Influenza B: moderately elevated/increasing
- Parainfluenza: slightly elevated
- RSV: elevated
- Adenovirus: low
- hMPV: elevated/increasing

Central Region

- Influenza A: moderately/sharply increasing
- Influenza B: low
- Parainfluenza: low
- RSV: elevated/slightly increasing
- Adenovirus: sporadic
- hMPV: low

SW Region

- Influenza A: sharply elevated; moderately/sharply increasing
- Influenza B: slightly elevated
- Parainfluenza: low
- RSV: elevated/increasing
- Adenovirus: low
- hMPV: low

North Region

- No data available

Congregate Setting Outbreaks of Viral Respiratory Illness

There were 19 (1N, 11C, 5SE, 2SW) new respiratory outbreaks reported to MDHHS during this time Period. Respiratory outbreaks for the 2017-2018 season are listed in the table below.

Facility Type	C	N	SE	SW	Total	2015-2016 Total	2016-2017 Total
Schools: K-12 & College	2		1		3	10	25
Long-term Care / Assisted Living Facility	47	10	15	16	88	60	138
Healthcare Facility	1				1	11	23
Daycare	1			1	2	2	3
Homeless Shelter						0	1
Correction Facilities						2	2
Other (Church, Gym, Unknown)						2	3
Total	51	10	16	17	94	87	195

Did you know?

Congregate setting outbreaks of viral respiratory illnesses are required to be reported to your local health department? See http://www.michigan.gov/documents/mdch/Influenza_Guidance_for_Healthcare_Providers_2015-2016_503396_7.pdf

For questions or to be added to the distribution list, please contact Seth Eckel at EckelS1@michigan.gov

MDHHS Contributors

Bureau of Family Health Services

Bureau of Epidemiology and Population Health – S. Bidol, MPH, S. Eckel, MPH, S. Kim, MPH, M. Ladisky

Bureau of Labs – B. Robeson, MT, V. Vavricka, MS