



Michigan Flu Focus

Weekly Influenza Surveillance Report



Editor: Sue Kim, MPH

Editor Email: KimS2@michigan.gov

March 1, 2019

Vol. 16; No.21

Week Ending February 23, 2019 | WEEK 8

Michigan Influenza Activity

No Activity

Sporadic

Local

Regional

Widespread

*Clicking on the current activity level will direct you to the CDC webpage defining each activity level for the geographic spread of influenza

Updates of Interest

The WHO has recently announced two influenza virus vaccine recommendations. Please see the following links on the WHO's *recommended composition of influenza virus vaccines for use in the 2019-2020 northern hemisphere influenza season* and *antigenic and genetic characteristics of zoonotic influenza viruses and candidate vaccine viruses developed for potential use in human vaccines*.

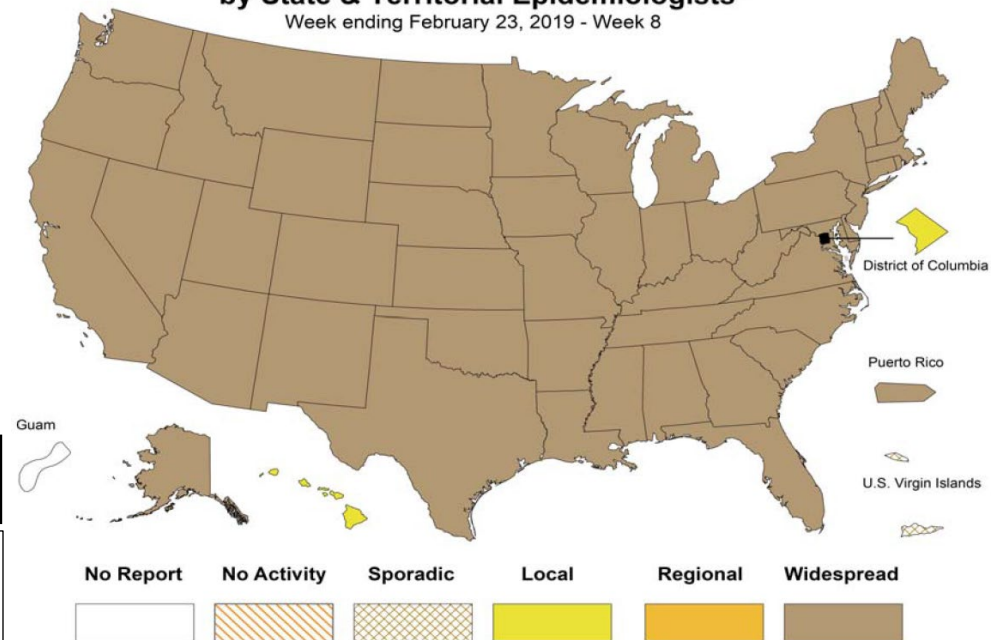
Links:

https://www.who.int/influenza/vaccines/virus/recommendations/201902_recommendation.pdf?ua=1

https://www.who.int/influenza/vaccines/virus/201902_zoonotic_vaccine_virusupdate.pdf?ua=1

Weekly Influenza Activity Estimates Reported by State & Territorial Epidemiologists*

Week ending February 23, 2019 - Week 8



Source: CDC FluView

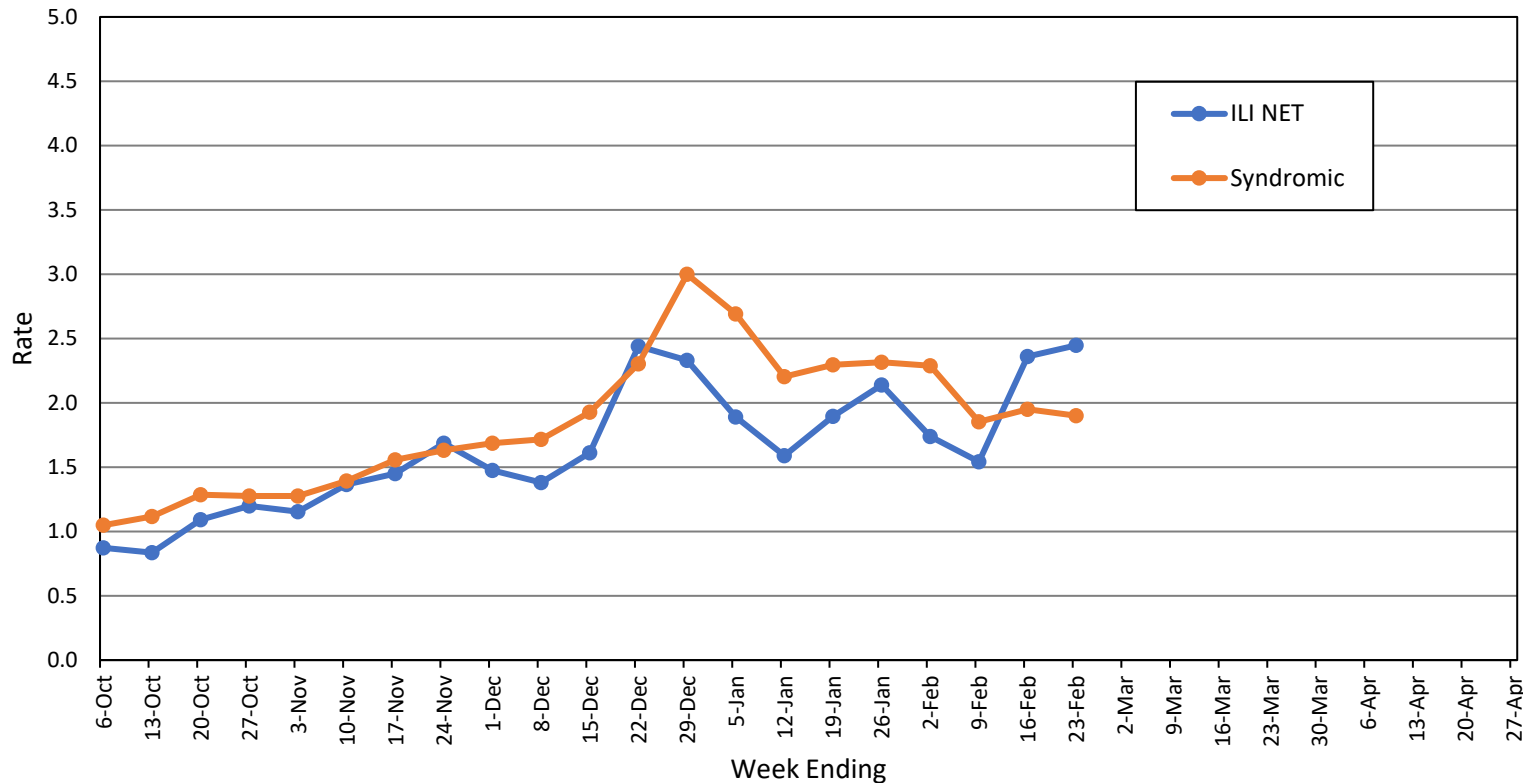
Influenza-associated Pediatric Mortality

One (1) pediatric influenza (A/H1N1-09) death has been confirmed by MDHHS for the 2018-2019 flu season. Nationally, 56 influenza-associated pediatric deaths have been reported thus far for the 2018-2019 flu season.

- Number of reports by region: 31 total [C(8), N(3), SE(15), SW(5)]
- Proportion of visits due to ILI: \leftrightarrow 2.4% (regional baseline*: 1.8%)
- A total of 251 patient visits due to ILI were reported out of 10,259 office visits

*Regional baseline is developed by calculating the mean percentage of patient visits for ILI during non-influenza weeks for the previous three seasons and adding two standard deviations.

MI Statewide ILI NET and Syndromic Surveillance Rates, 2018-2019



National Surveillance

In the United States, 5.0% of outpatient visits were due to influenza-like illness (ILI), which is above the national baseline of 2.2%.

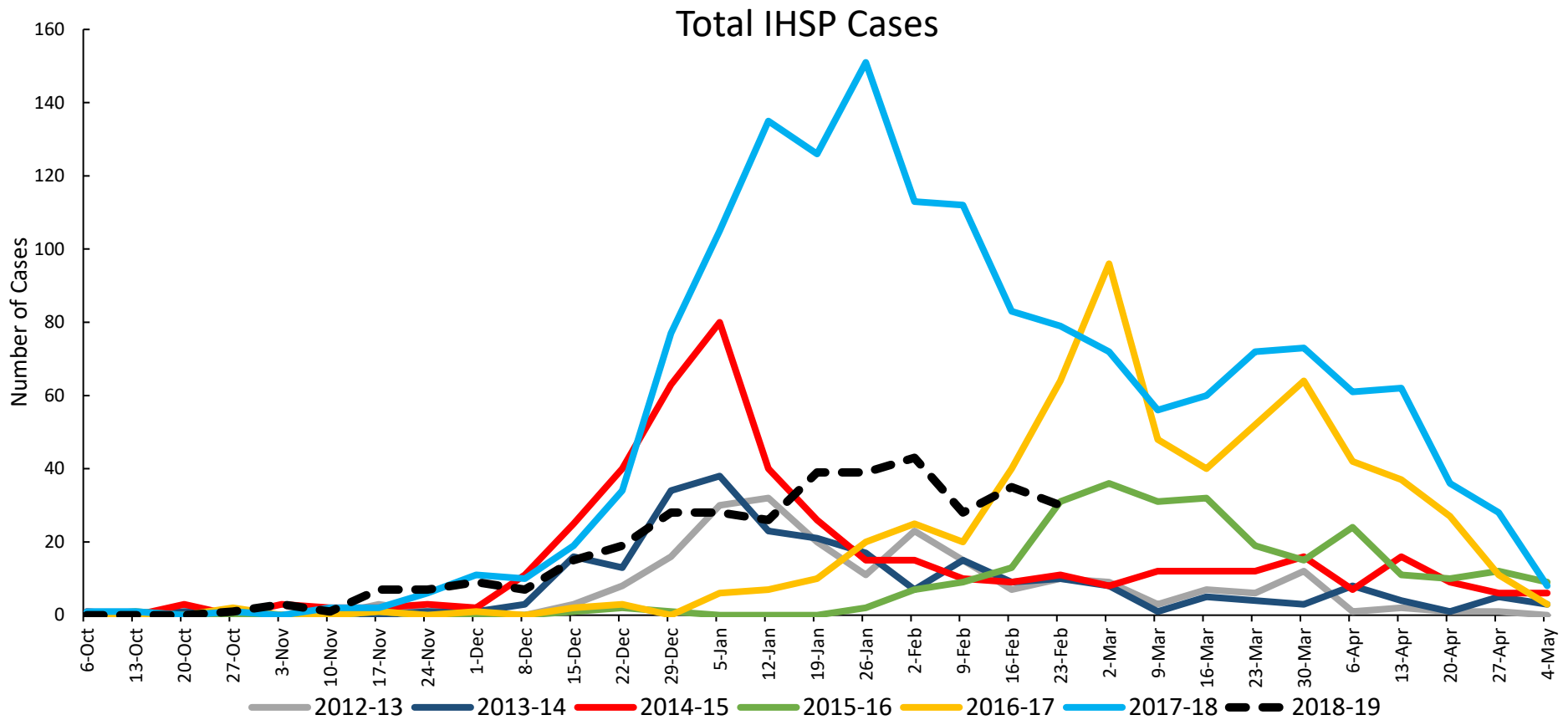
Become a sentinel provider!

Contact Shelly Doeblen at DoeblerM@michigan.gov

Influenza-related Hospitalization Surveillance Week Ending February 23

Influenza Hospitalization Surveillance Project

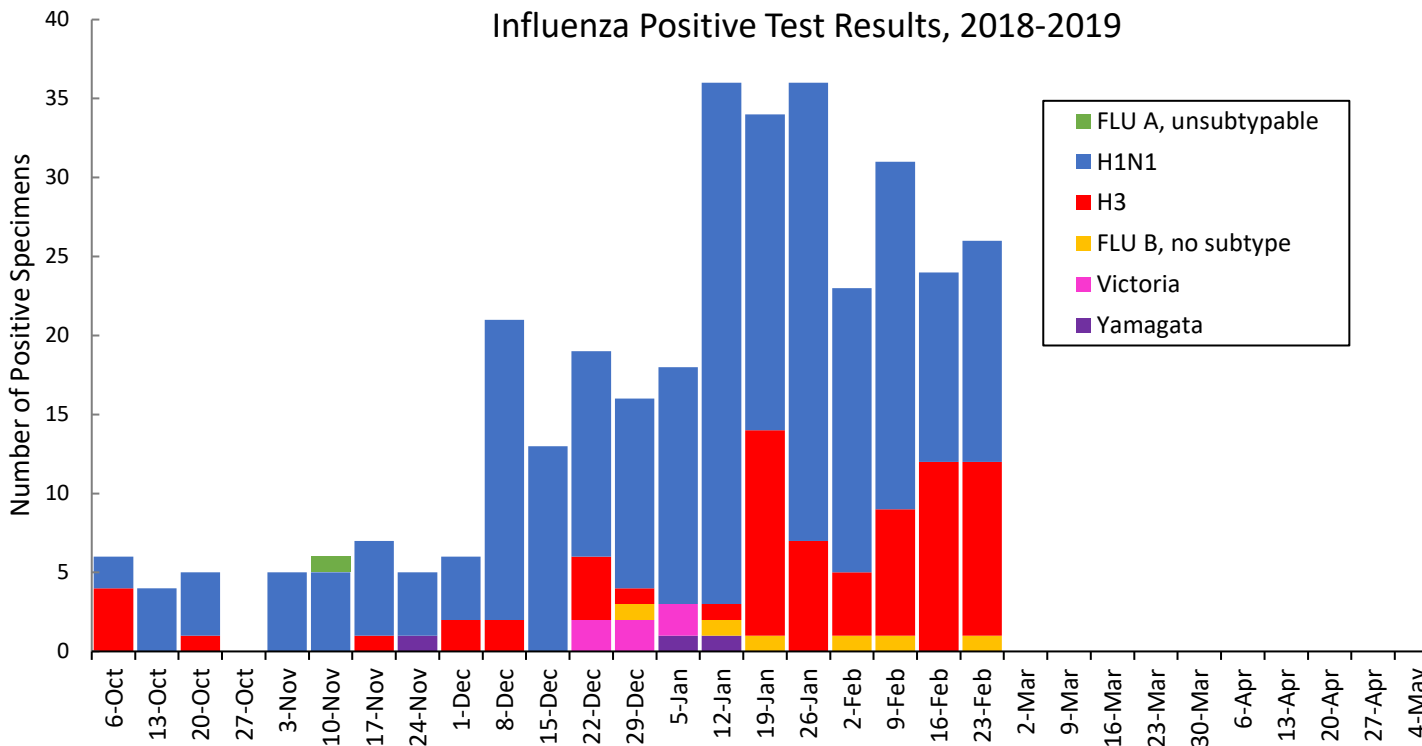
The CDC Influenza Hospitalization Surveillance Project (IHSP) provides population-based rates of hospitalization due to severe influenza-related illness through active surveillance and chart review of lab-confirmed cases from Oct. 1, 2018 until Apr. 30, 2019, for Clinton, Eaton, Ingham, Genesee, and Washtenaw counties. Since Oct. 1, there have been **365 (58 pediatric, 307 adult)** influenza-related hospitalizations reported in the catchment area for the 2018-2019 season.



Washtenaw County was added in 2017-2018

MDHHS Bureau of Laboratories reported 28 new positive influenza results (11C, 3N, 2SE, 12SW)

Respiratory Virus	# Positive Respiratory Virus Results by Region				Overall Total	2017-18 Total
	C	N	SE	SW		
2009 A/H1N1pdm	116	21	38	82	257	80
Influenza A/H3	32	10	6	18	66	579
Influenza B	2	1	10	1	14	220
Total	150	32	54	101	337	879



Based on STARLIMS MDHHS BOL Testing Portal

Note: Flu B subtyping will be reported based on MDHHS BOL testing runs (roughly each month) and will be backtracked into this graph

Most recent MDHHS BOL Flu B subtyping run: **January 11, 2019**

Michigan Sentinel Clinical Lab Respiratory Virus Data

Ten (10) sentinel clinical labs (3SE, 0SW, 6C, 1N) reported during this week

SE Region

- Influenza A: moderate; increases
- Influenza B: low
- Parainfluenza: low
- RSV: moderate; downward trend
- Adenovirus: low
- hMPV: low or slightly increased

Central Region

- Influenza A: low-moderate; downward trend
- Influenza B: sporadic-very low
- Parainfluenza: sporadic-low
- RSV: low or slightly elevated; some decreases
- Adenovirus: sporadic
- hMPV: sporadic-low

SW Region

- Influenza A: no data available
- Influenza B: no data available
- Parainfluenza: no data available
- RSV: no data available
- Adenovirus: no data available
- hMPV: no data available

North Region

- Influenza A: slightly elevated; downward trend
- Influenza B: sporadic
- Parainfluenza: no data available
- RSV: low
- Adenovirus: no data available
- hMPV: no data available

There were four (1N, 2C, 1SE, 0SW) new respiratory viral outbreaks reported to MDHHS during this time period. Respiratory outbreaks for the 2018-2019 season are listed in the table below.

Facility Type	C	N	SE	SW	Total	2016-2017 Total	2017-2018 Total
Schools: K-12 & College	2	2	1	1	6	25	14
Long-term Care / Assisted Living Facility	6	2	7	5	20	138	238
Healthcare Facility	1	0	0	0	1	23	4
Daycare	0	0	0	0	0	3	4
Homeless Shelter	0	0	1	0	1	1	0
Correctional Facility	1	3	0	0	4	2	10
Other	0	0	0	0	0	3	0
Total	10	7	9	6	32	195	270

Did you know?

Congregate setting outbreaks of viral respiratory illnesses are required to be reported to your local health department? See:

- [Influenza Guidance for Healthcare Providers](#)
- [Guideline for influenza and Respiratory Virus Outbreaks in Long-Term Care Facilities](#)

FluBytes

- [WHO Recommendations for 2019-20 Influenza Vaccine: Postponing H2N3 Announcement](#)
- [Legislators Reintroduce Law to Boost Investment in Universal Flu Vaccine](#)
- [Exploring Influenza Severity and How Deadly It Can Be](#)

MDHHS Contributors

Bureau of Epidemiology and Population Health – S. Bidol, MPH, S. Eckel, MPH, S. Kim, MPH

Bureau of Family Health Services – M. Doebler, MPH

Bureau of Labs – B. Robeson, MT, V. Vavricka, MS

For questions or to be added to the distribution list, please contact Sue Kim at KimS2@michigan.gov