



Michigan Flu Focus

Weekly Influenza Surveillance Report



Editor: Sue Kim, MPH

Editor Email: KimS2@michigan.gov

March 8, 2019

Vol. 16; No.22

Week Ending March 2, 2019 | WEEK 9

Michigan Influenza Activity

No Activity
Sporadic
Local
Regional
<u>Widespread</u>

*Clicking on the current activity level will direct you to the CDC webpage defining each activity level for the geographic spread of influenza

Updates of Interest

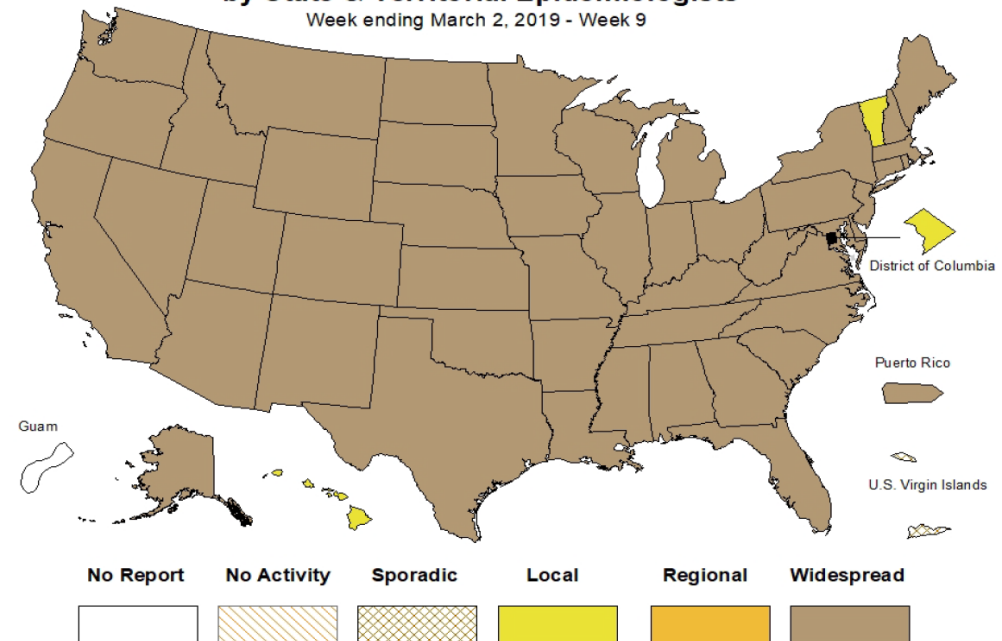
Influenza A (H1N1) has been the dominant strain during the beginning of the 2018-19 influenza season. But in recent weeks, more than half of the testing data have reported Influenza A (H3N2).

Please see the following link to CDC's FluView report for more details.

Link: <https://www.cdc.gov/flu/weekly/index.htm#S1>

Weekly Influenza Activity Estimates Reported by State & Territorial Epidemiologists*

Week ending March 2, 2019 - Week 9



Source: CDC FluView

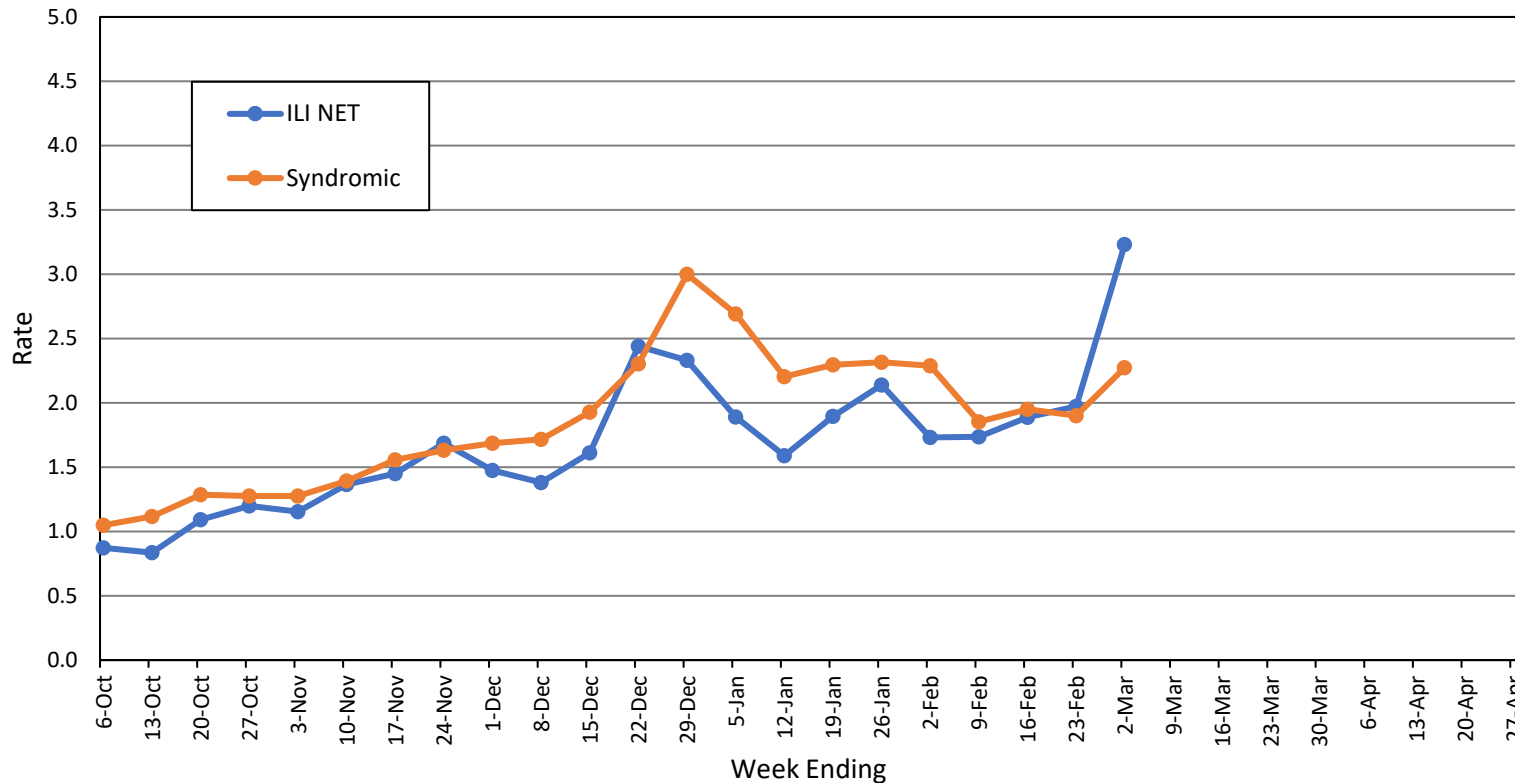
Influenza-associated Pediatric Mortality

One (1) pediatric influenza (A/H1N1-09) death has been confirmed by MDHHS for the 2018-2019 flu season. Nationally, 64 influenza-associated pediatric deaths have been reported thus far for the 2018-2019 flu season.

- Number of reports by region: 36 total [C(9), N(3), SE(15), SW(9)]
- Proportion of visits due to ILI: ↑ 3.2% (regional baseline*: 1.8%)
- A total of 357 patient visits due to ILI were reported out of 11,047 office visits

*Regional baseline is developed by calculating the mean percentage of patient visits for ILI during non-influenza weeks for the previous three seasons and adding two standard deviations.

MI Statewide ILI NET and Syndromic Surveillance Rates, 2018-2019



National Surveillance

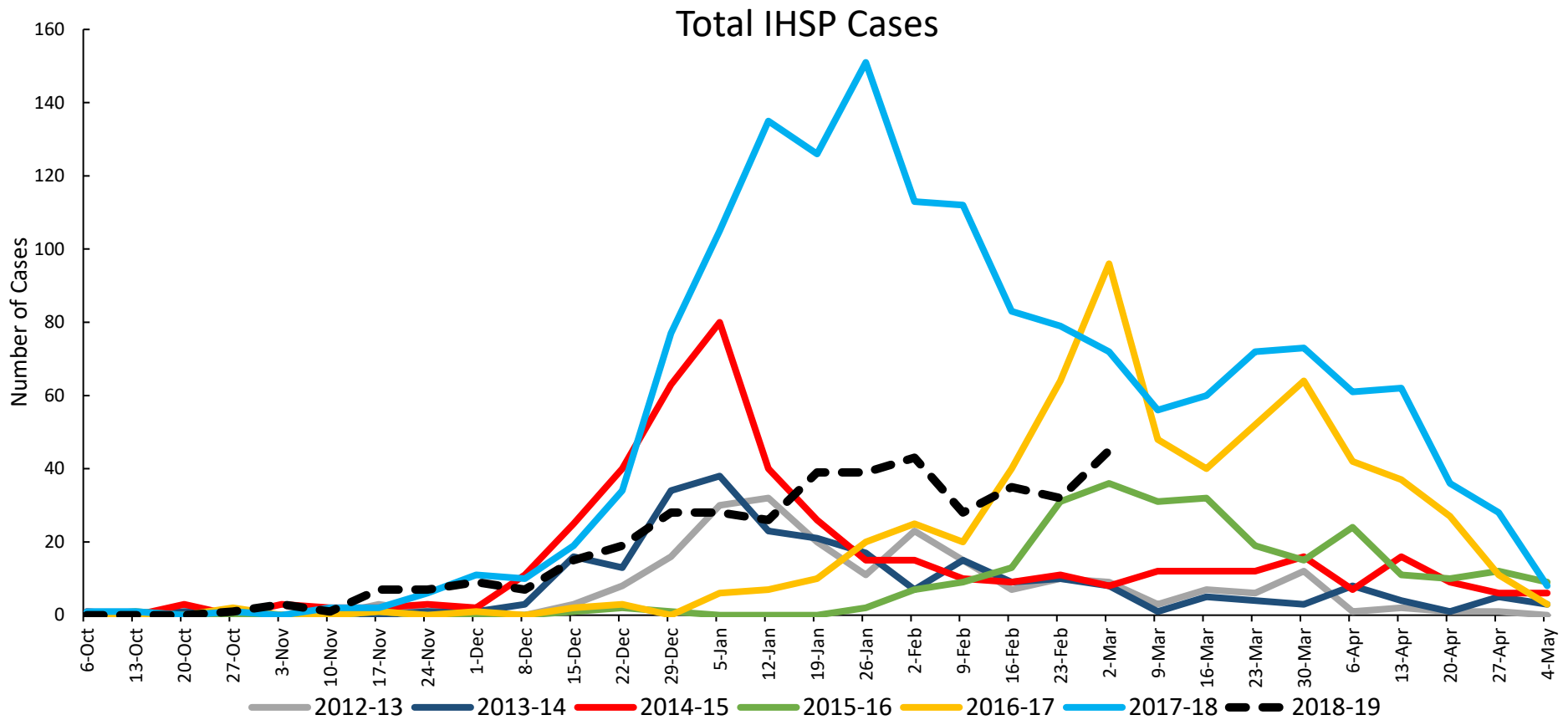
In the United States, 4.7% of outpatient visits were due to influenza-like illness (ILI), which is above the national baseline of 2.2%.

Become a sentinel provider!

Contact Shelly Doeblen at DoeblenM@michigan.gov

Influenza Hospitalization Surveillance Project

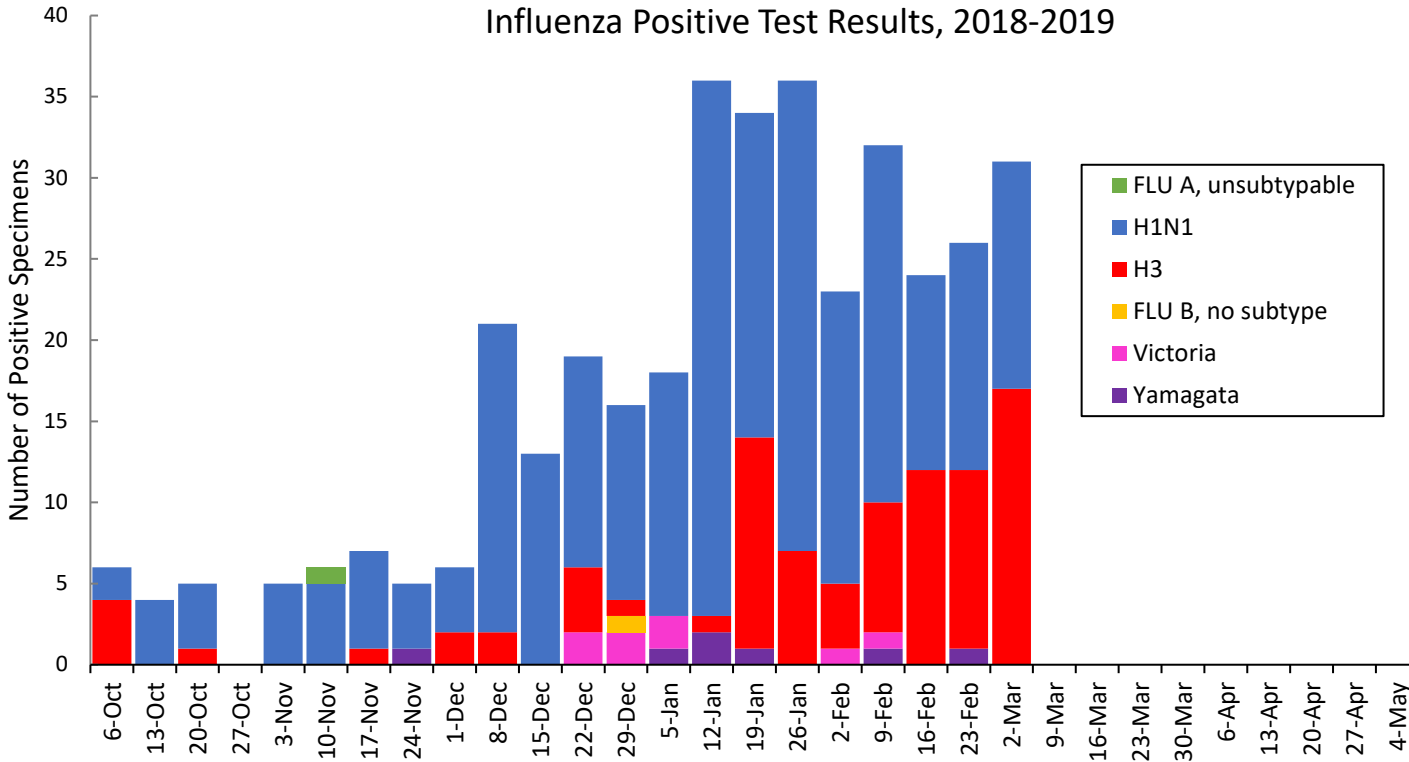
The CDC Influenza Hospitalization Surveillance Project (IHSP) provides population-based rates of hospitalization due to severe influenza-related illness through active surveillance and chart review of lab-confirmed cases from Oct. 1, 2018 until Apr. 30, 2019, for Clinton, Eaton, Ingham, Genesee, and Washtenaw counties. Since Oct. 1, there have been **412 (65 pediatric, 347 adult)** influenza-related hospitalizations reported in the catchment area for the 2018-2019 season.



Washtenaw County was added in 2017-2018

MDHHS Bureau of Laboratories reported 33 new positive influenza results (8C, 1N, 9SE, 15SW)

Respiratory Virus	# Positive Respiratory Virus Results by Region				Overall Total	2017-18 Total
	C	N	SE	SW		
2009 A/H1N1pdm	119	21	45	85	270	80
Influenza A/H3	37	11	8	30	86	579
Influenza B	2	1	10	1	14	220
Total	158	33	63	116	370	879



Based on STARLIMS MDHHS BOL Testing Portal

Note: Flu B subtyping will be reported based on MDHHS BOL testing runs (roughly each month) and will be backtracked into this graph

Most recent MDHHS BOL Flu B subtyping run: **March 6, 2019**

Michigan Sentinel Clinical Lab Respiratory Virus Data

Twelve (12) sentinel clinical labs (3SE, 1SW, 7C, 1N) reported during this week

SE Region

- Influenza A: moderate; increasing
- Influenza B: slightly elevated; some increases
- Parainfluenza: low
- RSV: moderate; downward trend
- Adenovirus: low or slightly elevated
- hMPV: slightly elevated; some increases

Central Region

- Influenza A: moderate; increasing
- Influenza B: sporadic-very low
- Parainfluenza: sporadic-low
- RSV: low or slightly elevated; steady or downward trend
- Adenovirus: sporadic-low
- hMPV: low

SW Region

- Influenza A: moderate; increasing
- Influenza B: low
- Parainfluenza: sporadic
- RSV: moderate; steady
- Adenovirus: low
- hMPV: low

North Region

- Influenza A: slightly elevated; increasing
- Influenza B: low
- Parainfluenza: no data available
- RSV: low
- Adenovirus: no data available
- hMPV: no data available

There were three (0N, 2C, 0SE, 1SW) new respiratory viral outbreaks reported to MDHHS during this time period. Respiratory outbreaks for the 2018-2019 season are listed in the table below.

Facility Type	C	N	SE	SW	Total	2016-2017 Total	2017-2018 Total
Schools: K-12 & College	2	2	1	1	6	25	14
Long-term Care / Assisted Living Facility	9	2	7	6	24	138	238
Healthcare Facility	1	0	0	0	1	23	4
Daycare	0	0	0	0	0	3	4
Homeless Shelter	0	0	1	0	1	1	0
Correctional Facility	1	3	0	0	4	2	10
Other	0	0	0	0	0	3	0
Total	13	7	9	7	36	195	270

Did you know?

Congregate setting outbreaks of viral respiratory illnesses are required to be reported to your local health department? See:

- [Influenza Guidance for Healthcare Providers](#)
- [Guideline for influenza and Respiratory Virus Outbreaks in Long-Term Care Facilities](#)

FluBytes

- [Flu Burden According to CDC Report](#)
- [New Study Presented at ACIP Indicates No Significant Association Between Flu Vaccine and Miscarriage](#)
- [WHO 2019-2020 Influenza Virus Vaccine Recommendations](#)

MDHHS Contributors

Bureau of Epidemiology and Population Health – S. Bidol, MPH, S. Eckel, MPH, S. Kim, MPH

Bureau of Family Health Services – M. Doebler, MPH

Bureau of Labs – B. Robeson, MT, V. Vavricka, MS

For questions or to be added to the distribution list, please contact Sue Kim at KimS2@michigan.gov