



# Michigan Flu Focus

## Weekly Influenza Surveillance Report



Editor: Seth Eckel, MPH  
Co-Editor: Sue Kim, MPH

Editor Email: [EckelS1@michigan.gov](mailto:EckelS1@michigan.gov)

March 09, 2018

Vol. 15; No. 21

Week Ending March 3, 2018 | WEEK 9

Michigan Influenza Activity
No Activity
Sporadic
Local
Regional
<b><u>Widespread</u></b>

\*Clicking on the current activity level will direct you to the CDC webpage defining each activity level for the geographic spread of influenza

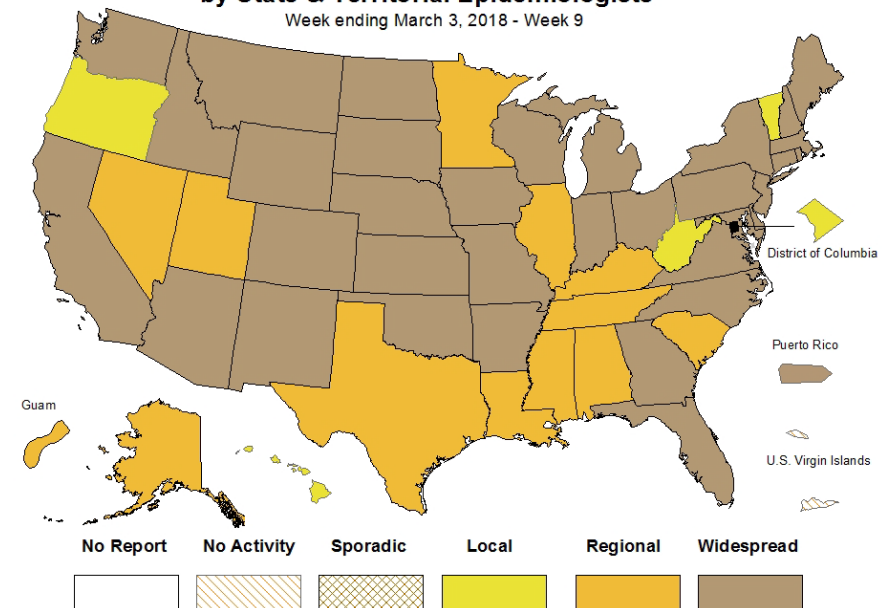
### Updates of Interest

The sole US influenza vaccine made in cell culture may have worked about 20% better than standard egg-based vaccines this flu season, FDA says.

Click [here](#) for more details from STAT News.

### Weekly Influenza Activity Estimates Reported by State & Territorial Epidemiologists\*

Week ending March 3, 2018 - Week 9



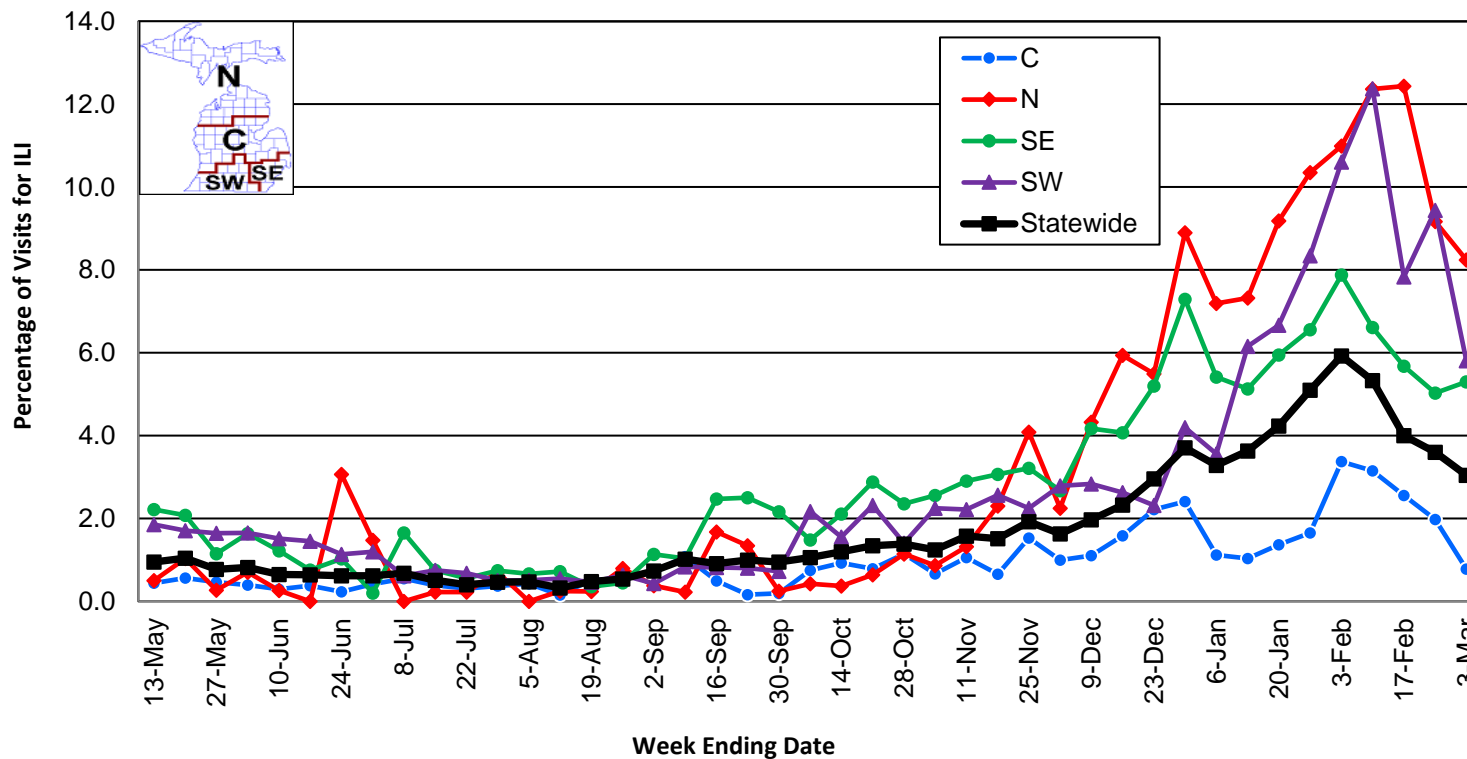
### Influenza-associated Pediatric Mortality

Two (2) pediatric influenza deaths (A/H3) have been confirmed by MDHHS to date for the 2017-2018 flu season. Nationally, one hundred nineteen (119) influenza-associated pediatric deaths have been reported thus far for the 2017-2018 flu season.

- Number of reports by region: 31 total [C(11), N(2), SE(12), SW(6)]
- Proportion of visits due to ILI: ↓ 3.0 % (regional baseline\*: 1.8%)
- A total of 305 patient visits due to ILI were reported out of 10,028 office visits

\*Regional baseline is developed by calculating the mean percentage of patient visits for ILI during non-influenza weeks for the previous three seasons and adding two standard deviations.

Percentage of Visits for Influenza-like Illness (ILI)  
Reported by Sentinel Providers, Statewide and Regions  
2016-17 and 2017-18 Flu Seasons



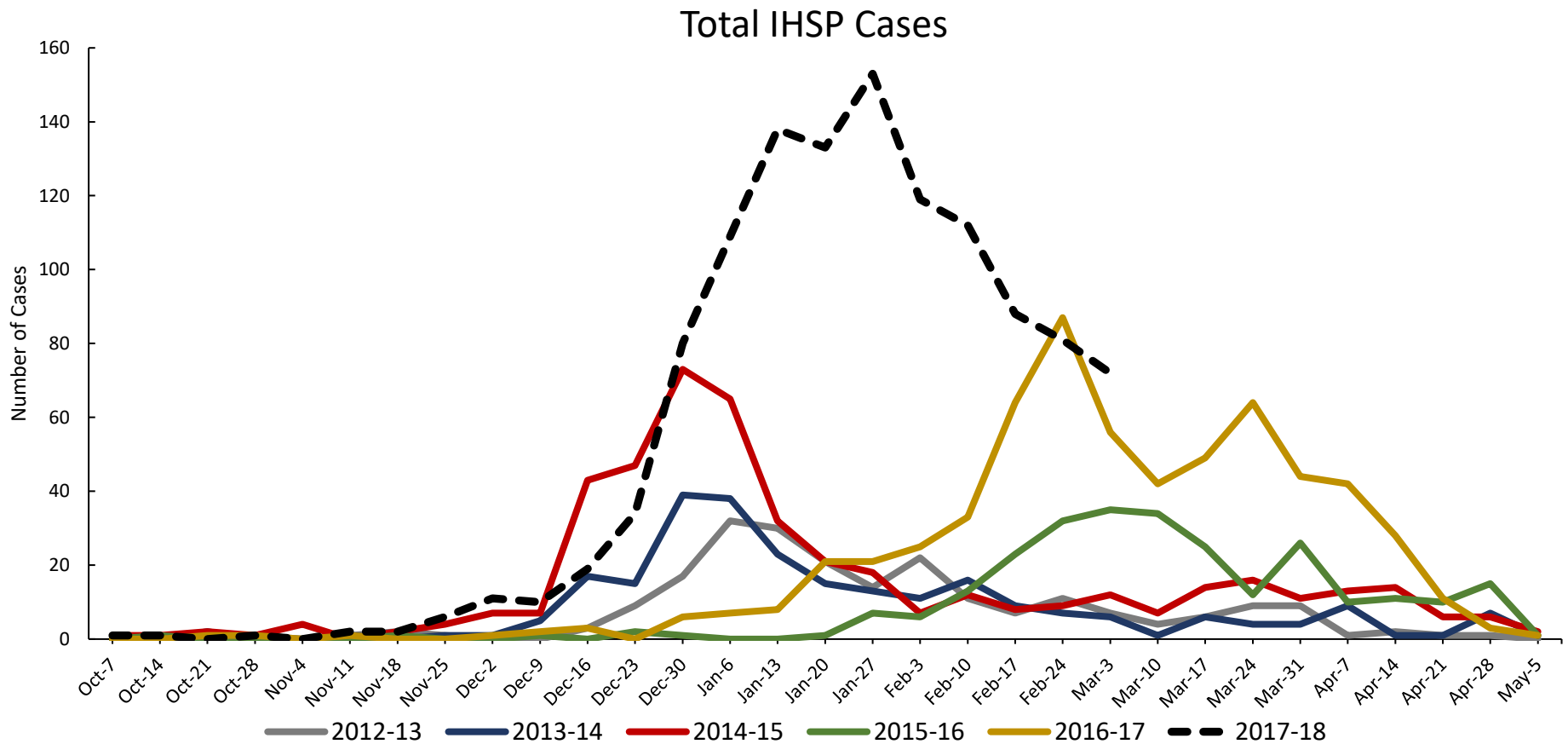
**Become a Sentinel Provider! Contact:**  
[EckelS1@michigan.gov](mailto:EckelS1@michigan.gov)

## National Surveillance

In the United States, 3.7% of outpatient visits were due to influenza-like illness, which is above the national baseline of 2.2%.

## Influenza Hospitalization Surveillance Project

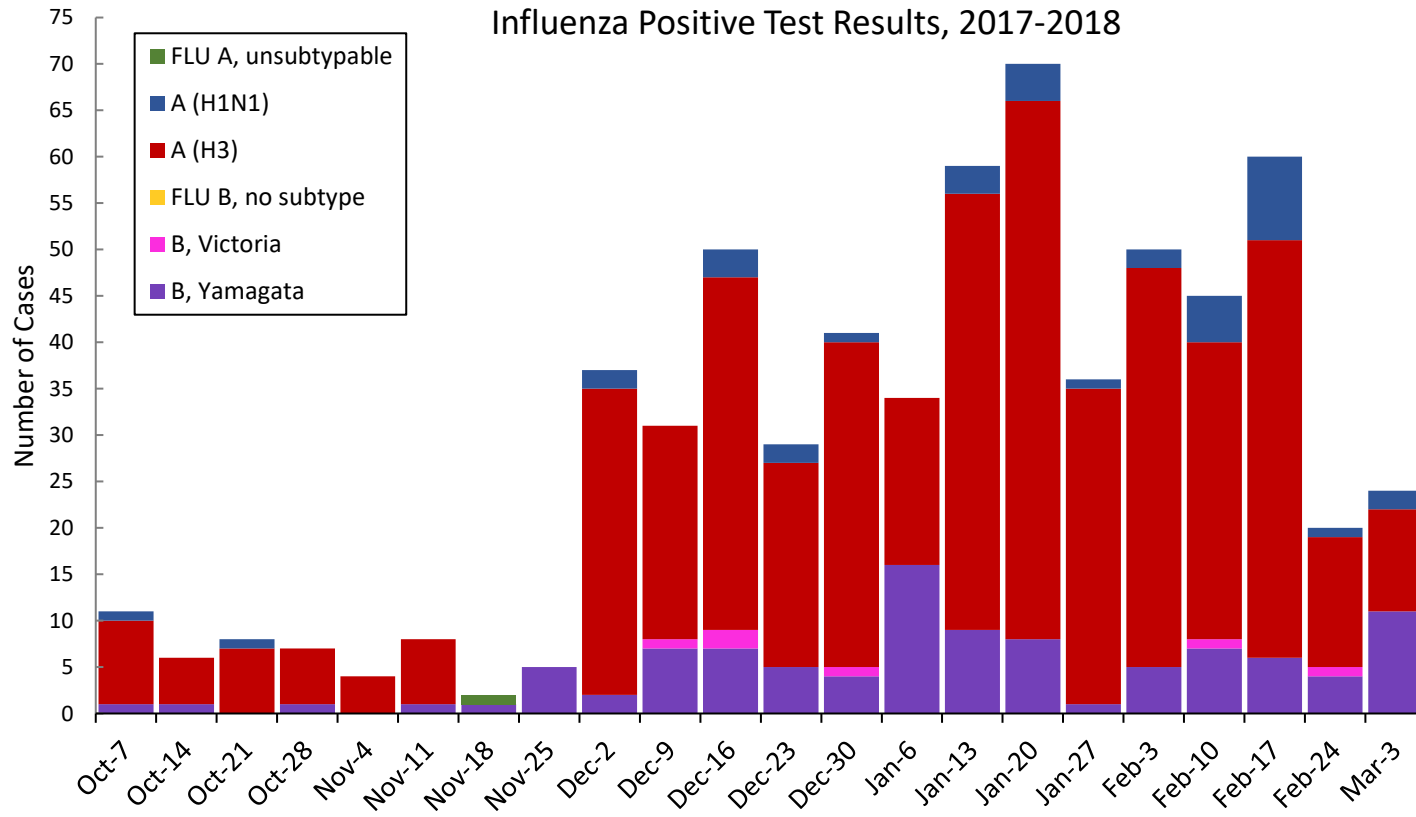
The CDC Influenza Hospitalization Surveillance Project (IHSP) provides population-based rates of hospitalization due to severe influenza-related illness through active surveillance and chart review of lab-confirmed cases from Oct. 1, 2017 until Apr. 30, 2018, for Clinton, Eaton, Ingham, Genesee, and Washtenaw counties. Since Oct. 1, there have been a total of **1,172 (99 pediatric, 1,073 adult)** influenza-related hospitalizations reported in the catchment area for the 2017-2018 season.



Genesee County was added in 2012-2013  
 Washtenaw County was added in 2017-2018

MDHHS Bureau of Laboratories reported 31 new positive influenza (4C, 1N, 3SE, 23SW).

Respiratory Virus	# Positive Respiratory Virus Results by Region				Overall Total
	C	N	SE	SW	
2009 A/H1N1pdm	5	3	17	13	<b>38</b>
Influenza A/H3	185	38	99	184	<b>506</b>
Influenza B	22	9	41	37	<b>109</b>
<b>Total</b>	<b>212</b>	<b>50</b>	<b>157</b>	<b>234</b>	<b>653</b>



\*Based on STARLIMS MDHHS BOL Testing Portal

Note: Flu B subtyping will be reported based on MDHHS BOL testing runs (roughly each month) and will be backtracked into this graph

Most recent MDHHS BOL Flu B subtyping run: **March 7, 2018.**

## Michigan Sentinel Clinical Lab Respiratory Virus Data

Ten (10) sentinel clinical labs (2SE, 2SW, 6C, 0N) reported during this week.

### SE Region

- Influenza A: strongly elevated; continued substantial decreases
- Influenza B: moderately elevated; some decreases
- Parainfluenza: low
- RSV: elevated; steady or slightly decreasing
- Adenovirus: no activity
- hMPV: elevated; some small increases

### Central Region

- Influenza A: moderately elevated; overall steady or decreasing trend
- Influenza B: low to modestly elevated; overall steady trend but variable
- Parainfluenza: sporadic
- RSV: low to slightly elevated; steady or some increases
- Adenovirus: low
- hMPV: low to slightly elevated

### SW Region

- Influenza A: moderately elevated; overall decreasing trend but variable
- Influenza B: elevated; slightly increasing
- Parainfluenza: low
- RSV: elevated; some small increases
- Adenovirus: low
- hMPV: low or slightly elevated

### North Region

- No data available

There were 6 (0N, 1C, 4SE, 1SW) new respiratory viral outbreaks reported to MDHHS during this time period. Respiratory outbreaks for the 2017-2018 season are listed in the table below.

Facility Type	C	N	SE	SW	Total	2015-2016 Total	2016-2017 Total
Schools: K-12 & College	9		2	3	14	10	25
Long-term Care / Assisted Living Facility	83	10	53	56	202	60	138
Healthcare Facility	2		1		3	11	23
Daycare	2			1	3	2	3
Homeless Shelter						0	1
Correctional Facility	1	4	1	2	8	2	2
Other						2	3
<b>Total</b>	<b>97</b>	<b>14</b>	<b>57</b>	<b>62</b>	<b>230</b>	<b>87</b>	<b>195</b>

## Did you know?

Congregate setting outbreaks of viral respiratory illnesses are required to be reported to your local health department? See:

- [Influenza Guidance for Healthcare Providers](#)
- [Guideline for influenza and Respiratory Virus Outbreaks in Long-Term Care Facilities](#)

## FluBytes

- [Study Finds No Immune Overload for US Kids' Vaccine Schedule](#)
- [Despite Push for Universal Flu Vaccine, the "Holy Grail" Stays Out of Reach](#)
- [Study Assesses Healthcare Workers' Exposures to Airborne Influenza Virus](#)

## MDHHS Contributors

**Bureau of Family Health Services -**

**Bureau of Epidemiology and Population Health –**  
S. Bidol, MPH, S. Eckel, MPH, S. Kim, MPH, M. Ladisky

**Bureau of Labs –** B. Robeson, MT, V. Vavricka, MS

For questions or to be added to the distribution list, please contact Seth Eckel at [EckelS1@michigan.gov](mailto:EckelS1@michigan.gov)