



# Michigan Flu Focus

Weekly Influenza Surveillance Report



Editor: Sue Kim, MPH

Editor Email: [KimS2@michigan.gov](mailto:KimS2@michigan.gov)

April 1, 2019

Vol. 16; No.25

Week Ending March 23, 2019 | WEEK 12

## Michigan Influenza Activity

No Activity
Sporadic
Local
Regional
<b><u>Widespread</u></b>

\*Clicking on the current activity level will direct you to the CDC webpage defining each activity level for the geographic spread of influenza

## Updates of Interest

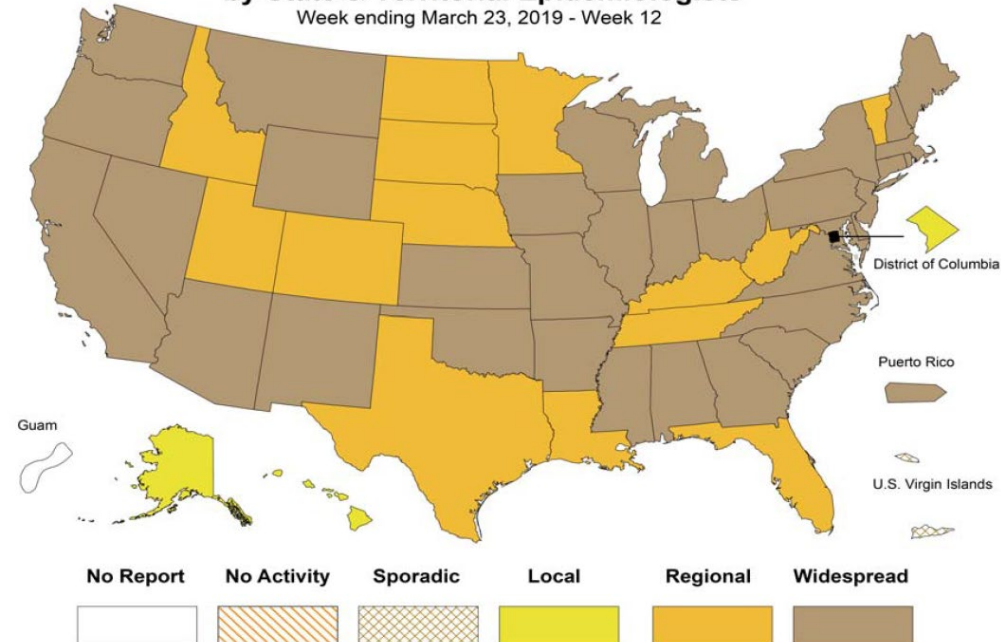
MI – Oakland County teen has been working for about a year and a half on a project that could eventually result in a more effective flu vaccine that could be manufactured more quickly than current vaccines. Please see the following link for more details.

Link:

<https://www.freep.com/story/news/local/michigan/oakland/2019/03/26/flu-vaccine-regeneron-science-talent-madeleine-yang/3211441002/>

## Weekly Influenza Activity Estimates Reported by State & Territorial Epidemiologists\*

Week ending March 23, 2019 - Week 12



Source: CDC FluView

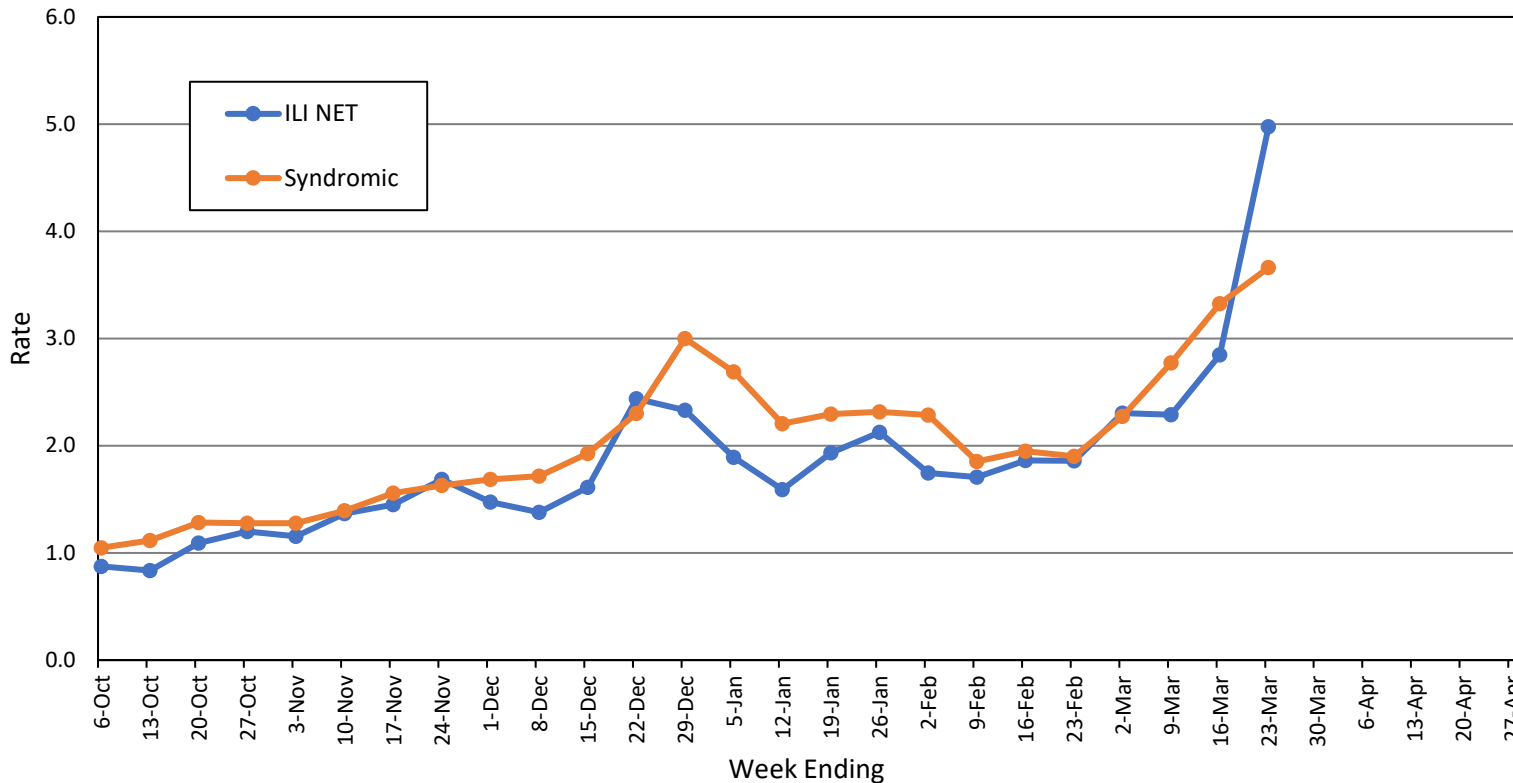
## Influenza-associated Pediatric Mortality

One (1) pediatric influenza (A/H1N1-09) death has been confirmed by MDHHS for the 2018-2019 flu season. Nationally, 77 influenza-associated pediatric deaths have been reported thus far for the 2018-2019 flu season.

- Number of reports by region: 32 total [C(8), N(3), SE(15), SW(6)]
- Proportion of visits due to ILI: ↑ 5.0% (regional baseline\*: 1.8%)
- A total of 480 patient visits due to ILI were reported out of 9,644 office visits

\*Regional baseline is developed by calculating the mean percentage of patient visits for ILI during non-influenza weeks for the previous three seasons and adding two standard deviations.

MI Statewide ILI NET and Syndromic Surveillance Rates, 2018-2019



## National Surveillance

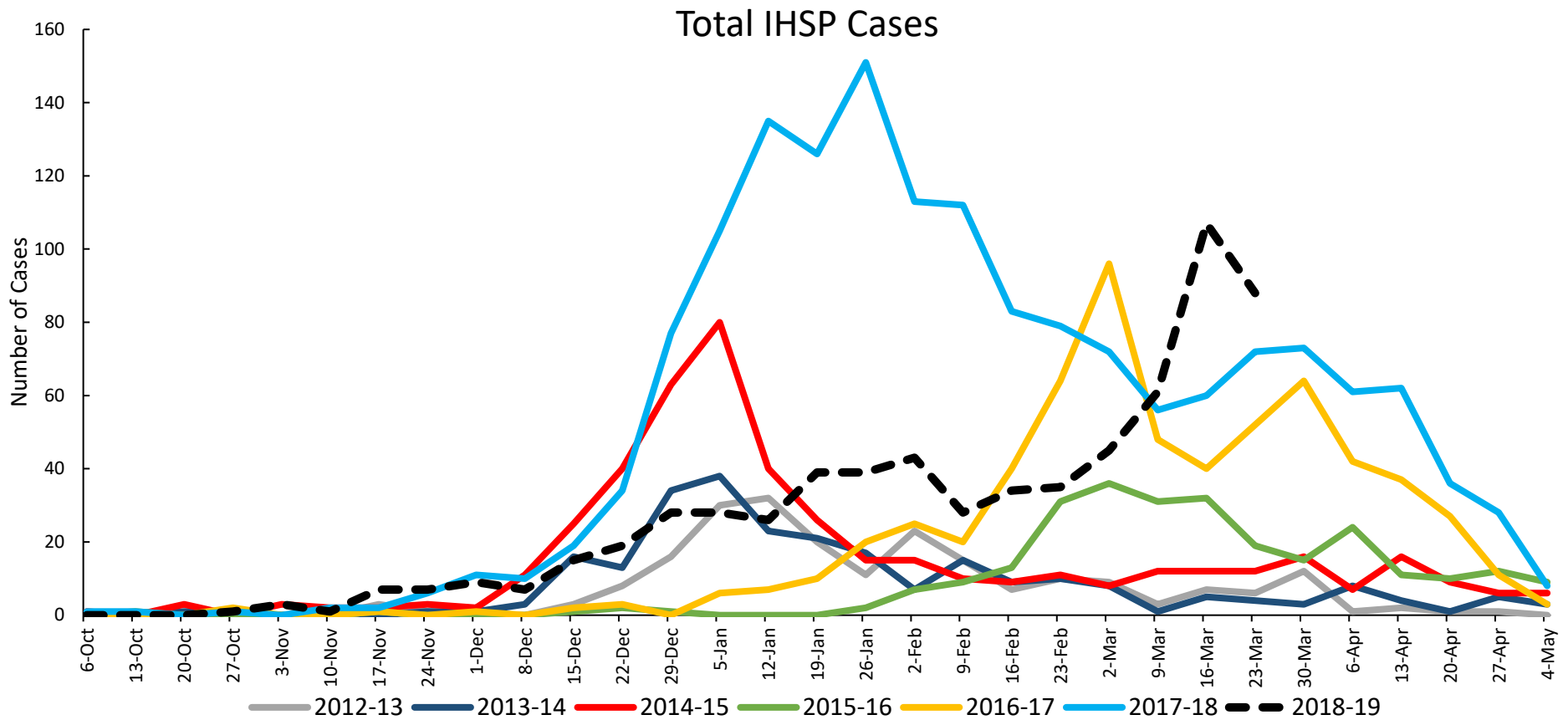
In the United States, 3.8% of outpatient visits were due to influenza-like illness (ILI), which is above the national baseline of 2.2%.

**Become a sentinel provider!**

Contact Shelly Doeblner at [DoeblnerM@michigan.gov](mailto:DoeblnerM@michigan.gov)

## Influenza Hospitalization Surveillance Project

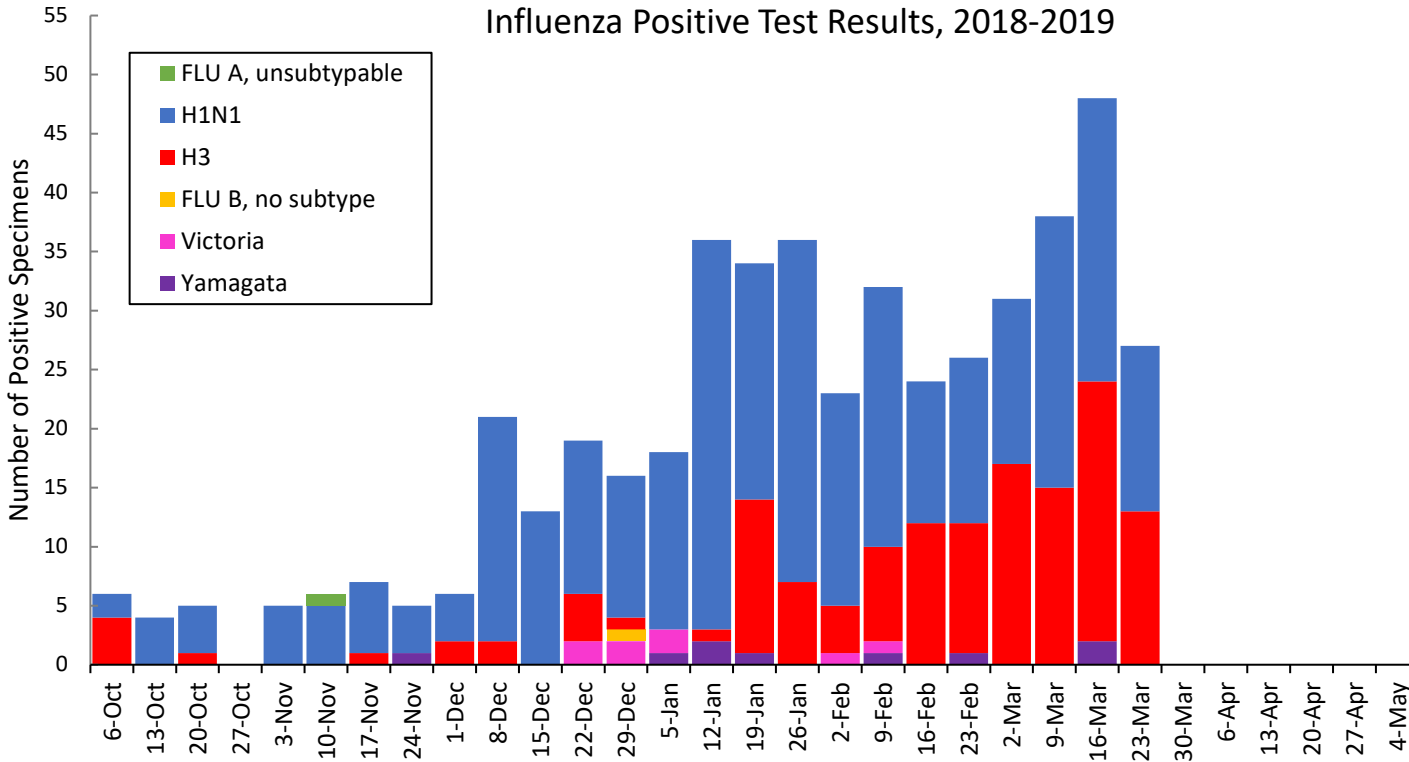
The CDC Influenza Hospitalization Surveillance Project (IHSP) provides population-based rates of hospitalization due to severe influenza-related illness through active surveillance and chart review of lab-confirmed cases from Oct. 1, 2018 until Apr. 30, 2019, for Clinton, Eaton, Ingham, Genesee, and Washtenaw counties. Since Oct. 1, there have been **670 (98 pediatric, 572 adult)** influenza-related hospitalizations reported in the catchment area for the 2018-2019 season.



Washtenaw County was added in 2017-2018

MDHHS Bureau of Laboratories reported 14 new positive influenza results (13C, 1N, 0SE, 0SW)

Respiratory Virus	# Positive Respiratory Virus Results by Region				Overall Total	2017-18 Total
	C	N	SE	SW		
2009 A/H1N1pdm	153	23	49	97	322	80
Influenza A/H3	57	12	10	47	126	579
Influenza B	2	4	10	2	18	220
Total	212	39	69	146	466	879



Based on STARLIMS MDHHS BOL Testing Portal

Note: Flu B subtyping will be reported based on MDHHS BOL testing runs (roughly each month) and will be backtracked into this graph

Most recent MDHHS BOL Flu B subtyping run: **March 21, 2019**

## Michigan Sentinel Clinical Lab Respiratory Virus Data

Eleven (11) sentinel clinical labs (3SE, 2SW, 6C, 0N) reported during this week

### SE Region

- Influenza A: moderate-high; some increases
- Influenza B: moderate; increasing
- Parainfluenza: low
- RSV: elevated; some increases
- Adenovirus: slightly elevated
- hMPV: elevated

### Central Region

- Influenza A: moderate-high
- Influenza B: low
- Parainfluenza: low
- RSV: low
- Adenovirus: low
- hMPV: low-slightly elevated

### SW Region

- Influenza A: moderate; some increases
- Influenza B: sporadic-low
- Parainfluenza: low
- RSV: low to moderate
- Adenovirus: low
- hMPV: slightly elevated

### North Region

- Influenza A: no data available
- Influenza B: no data available
- Parainfluenza: no data available
- RSV: no data available
- Adenovirus: no data available
- hMPV: no data available

There were nine (1C, 0N, 3SE, 5SW) new respiratory viral outbreaks reported to MDHHS during this time period. Respiratory outbreaks for the 2018-2019 season are listed in the table below.

Facility Type	C	N	SE	SW	Total	2016-2017 Total	2017-2018 Total
Schools: K-12 & College	3	2	3	1	9	25	14
Long-term Care / Assisted Living Facility	9	2	12	12	35	138	238
Healthcare Facility	1	0	0	0	1	23	4
Daycare	0	0	0	0	0	3	4
Homeless Shelter	0	0	1	0	1	1	0
Correctional Facility	2	3	0	1	6	2	10
Other	0	0	0	0	0	3	0
<b>Total</b>	<b>15</b>	<b>7</b>	<b>16</b>	<b>14</b>	<b>52</b>	<b>195</b>	<b>270</b>

## Did you know?

Congregate setting outbreaks of viral respiratory illnesses are required to be reported to your local health department? See:

- [Influenza Guidance for Healthcare Providers](#)
- [Guideline for influenza and Respiratory Virus Outbreaks in Long-Term Care Facilities](#)

## FluBytes

- [WHO Recommendation Made for H3N2 Virus Vaccine Strain](#)
- [Oakland Teen's Research Project Could Assist Future Flu Vaccine Development](#)
- [AAP: No Flu Vaccine Preference for 2019-20 Flu Season](#)
- [Drug Mimics Human Antibody Against Flu](#)
- [Flu Activity Surveillance Update](#)

## MDHHS Contributors

**Bureau of Epidemiology and Population Health** – S. Bidol, MPH, S. Eckel, MPH, S. Kim, MPH

**Bureau of Family Health Services** – M. Doebler, MPH

**Bureau of Labs** – B. Robeson, MT, V. Vavricka, MS

For questions or to be added to the distribution list, please contact Sue Kim at [KimS2@michigan.gov](mailto:KimS2@michigan.gov)