



Michigan Flu Focus

Weekly Influenza Surveillance Report



Editor: Seth Eckel, MPH

Editor Email: EckelS1@michigan.gov

May 18, 2018

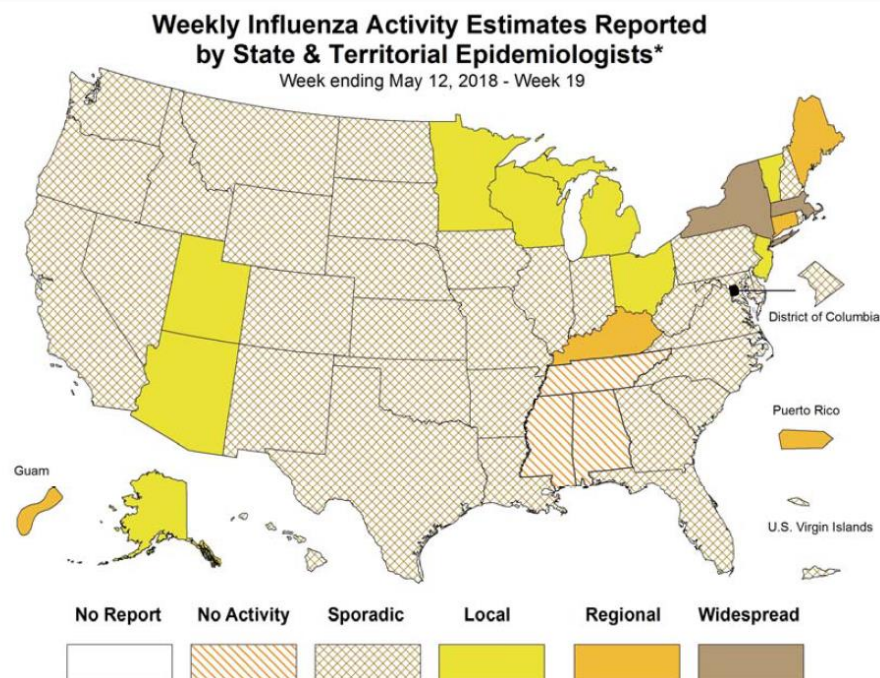
Vol. 15; No. 31

Co-Editor: Sue Kim, MPH

Week Ending May 12, 2018 | WEEK 19

Michigan Influenza Activity
No Activity
Sporadic
<u>Local</u>
Regional
Widespread

*Clicking on the current activity level will direct you to the CDC webpage defining each activity level for the geographic spread of influenza



Updates of Interest

Influenza activity held at inter-seasonal levels except in some countries in Eastern Europe, while increased activity observed in some countries in tropical America.

Click [here](#) for details from WHO.

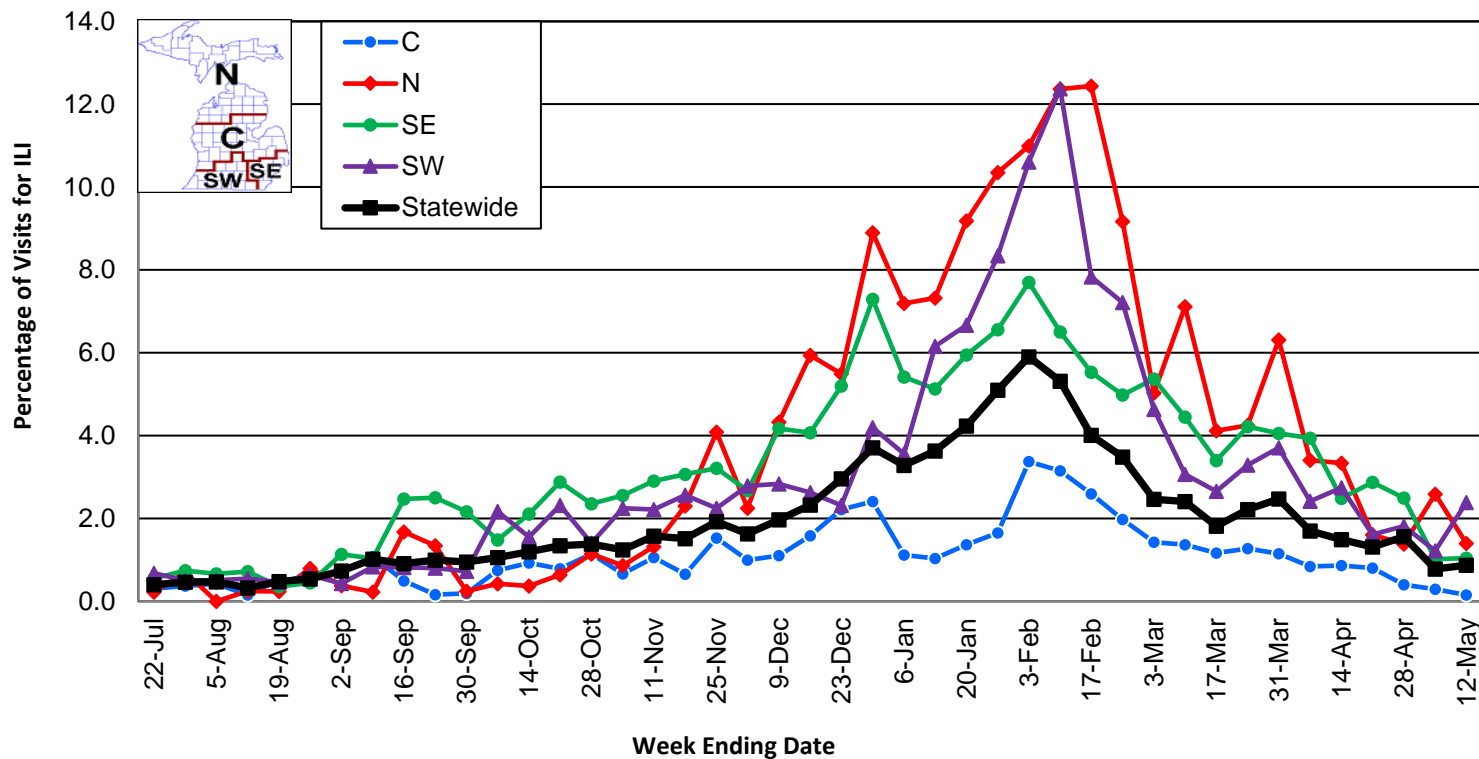
Influenza-associated Pediatric Mortality

To date, two (2) pediatric influenza deaths (A/H3) have been confirmed by MDHHS for the 2017-2018 flu season. Nationally, 168 influenza-associated pediatric deaths have been reported thus far for the 2017-2018 flu season.

- Number of reports by region: 21 total [C(7), N(1), SE(9), SW(4)]
- Proportion of visits due to ILI: ↑ 0.9% (regional baseline*: 1.8%)
- A total of 45 patient visits due to ILI were reported out of 5,179 office visits

*Regional baseline is developed by calculating the mean percentage of patient visits for ILI during non-influenza weeks for the previous three seasons and adding two standard deviations.

Percentage of Visits for Influenza-like Illness (ILI)
Reported by Sentinel Providers, Statewide and Regions
2016-17 and 2017-18 Flu Seasons



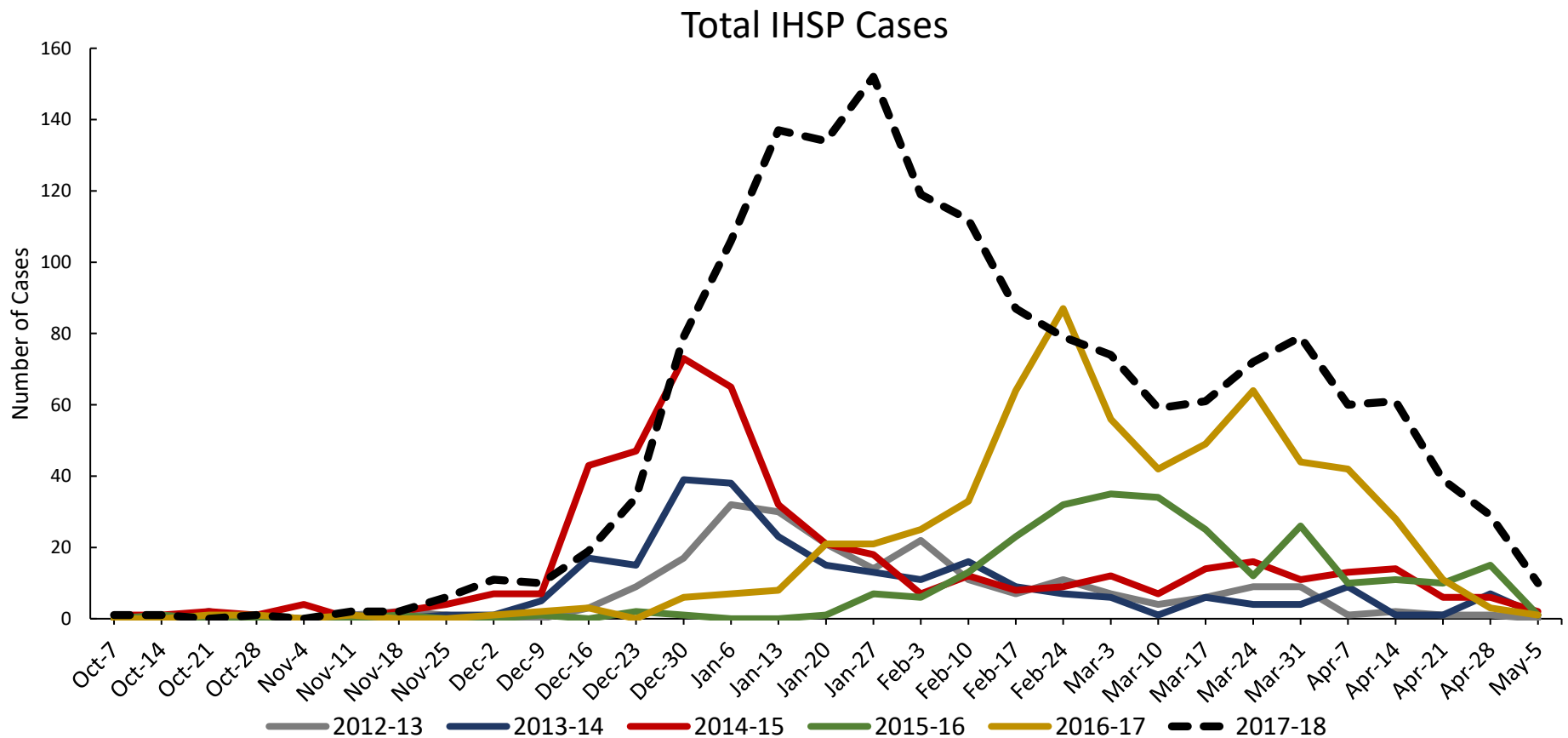
Become a Sentinel Provider! Contact:
EckelS1@michigan.gov

National Surveillance

In the United States, 1.2% of outpatient visits were due to influenza-like illness, which is below the national baseline of 2.2%.

Influenza Hospitalization Surveillance Project

The CDC Influenza Hospitalization Surveillance Project (IHSP) provides population-based rates of hospitalization due to severe influenza-related illness through active surveillance and chart review of lab-confirmed cases from Oct. 1, 2017 until Apr. 30, 2018, for Clinton, Eaton, Ingham, Genesee, and Washtenaw counties. Since Oct. 1, there have been a total of **1,636 (149 pediatric, 1,487 adult)** influenza-related hospitalizations reported in the catchment area for the 2017-2018 season.



Genesee County was added in 2012-2013

Washtenaw County was added in 2017-2018

*Surveillance period has ended as of April 30th, 2018 and will resume October 1st, 2018

MDHHS Bureau of Laboratories reported 9 new positive influenza results (0C, 0N, 0SE, 9SW).

Respiratory Virus	# Positive Respiratory Virus Results by Region				Overall Total
	C	N	SE	SW	
2009 A/H1N1pdm	28	4	22	26	80
Influenza A/H3	214	41	105	219	579
Influenza B	68	15	49	88	220
Total	310	60	176	333	879

Michigan Sentinel Clinical Lab Respiratory Virus Data

Ten (10) sentinel clinical labs (2SE, 2SW, 6C, 0N) reported during this week

SE Region

- Influenza A: low
- Influenza B: low or slightly elevated; downward trend; predominant
- Parainfluenza: slightly increased
- RSV: sporadic
- Adenovirus: low; steady
- hMPV: slightly elevated; steady

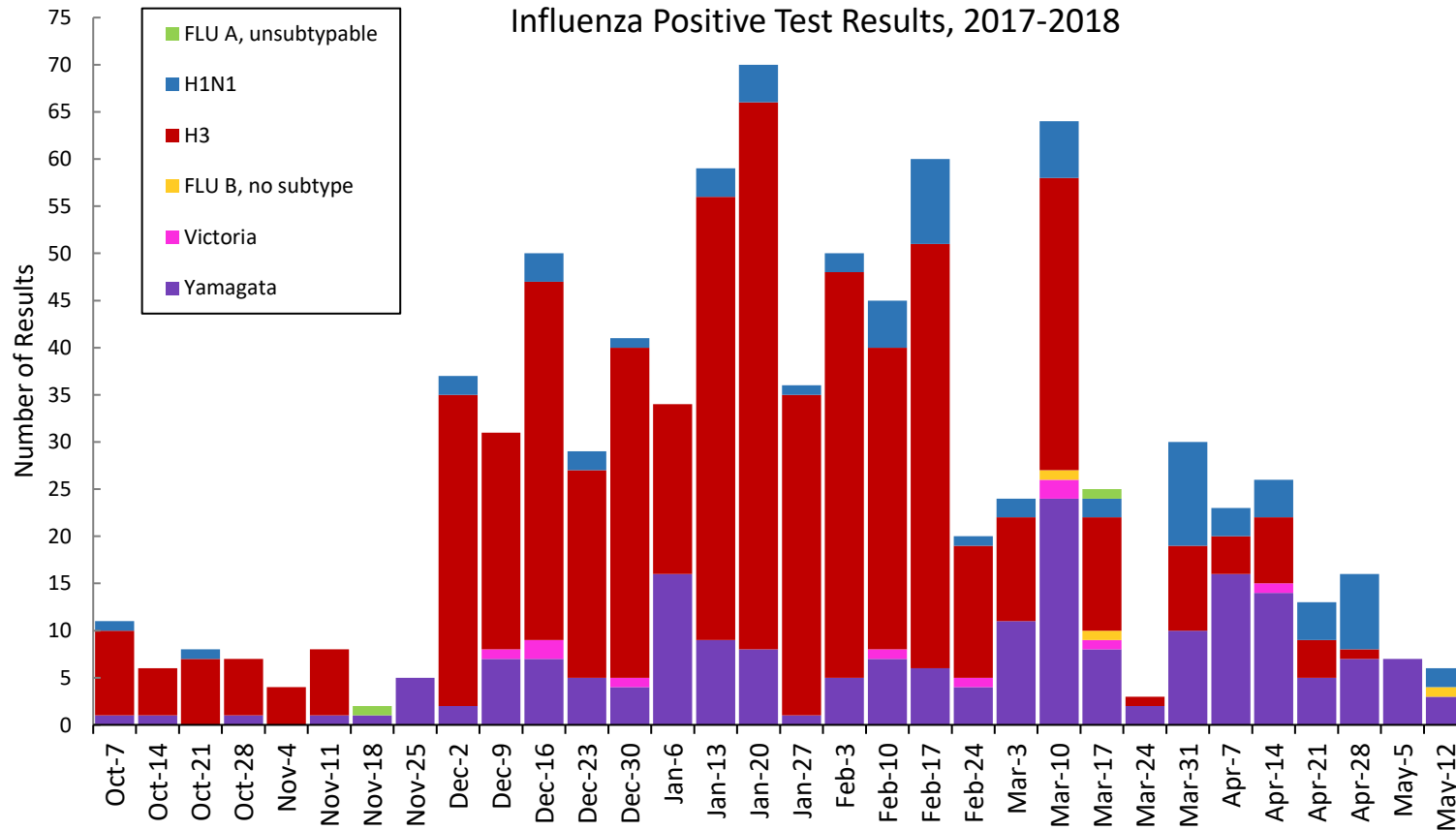
Central Region

- Influenza A: low
- Influenza B: low or slightly elevated; predominant
- Parainfluenza: low or slightly elevated
- RSV: low; steady
- Adenovirus: low
- hMPV: low or slightly elevated; steady

SW Region

- Influenza A: low or sporadic
- Influenza B: slightly elevated; variable; predominant
- Parainfluenza: low or slightly increased
- RSV: low
- Adenovirus: sporadic
- hMPV: slightly elevated; steady

Influenza Positive Test Results, 2017-2018



Based on STARLIMS MDHHS BOL Testing Portal

Note: Flu B subtyping will be reported based on MDHHS BOL testing runs (roughly each month) and will be backtracked into this graph

Latest MDHHS BOL Flu B subtyping run: **May 11, 2018.**

There was 1 (0N, 0C, 0SE, 1SW) new respiratory viral outbreak reported to MDHHS during this time period. Respiratory outbreaks for the 2017-2018 season are listed in the table below.

Facility Type	C	N	SE	SW	Total	2015-2016 Total	2016-2017 Total
Schools: K-12 & College	9		2	3	14	10	25
Long-term Care / Assisted Living Facility	93	10	66	69	238	60	138
Healthcare Facility	2		2		4	11	23
Daycare	2			2	4	2	3
Homeless Shelter						0	1
Correctional Facility	1	4	1	4	10	2	2
Other						2	3
Total	107	14	71	78	270	87	195

Did you know?

Congregate setting outbreaks of viral respiratory illnesses are required to be reported to your local health department? See:

- [Influenza Guidance for Healthcare Providers](#)
- [Guideline for influenza and Respiratory Virus Outbreaks in Long-Term Care Facilities](#)

FluBytes

- [Chinese Researchers Report Novel Triple-Reassortant Flu Viruses in Swine; H5N8 Avian Flu Reported in South Africa, Denmark](#)
- [Flugen Begins Enrollment of Clinical Trial of Novel Investigational Influenza Vaccine Against Multi-Season Mismatched Strains](#)

MDHHS Contributors

Bureau of Family Health Services -

Bureau of Epidemiology and Population Health –
S. Bidol, MPH, S. Eckel, MPH, S. Kim, MPH, M. Ladisky

Bureau of Labs – B. Robeson, MT, V. Vavricka, MS

For questions or to be added to the distribution list, please contact Seth Eckel at EckelS1@michigan.gov