



# Michigan Flu Focus

## Weekly Influenza Surveillance Report



Editor: Seth Eckel, MPH

Editor Email: [EckelS1@michigan.gov](mailto:EckelS1@michigan.gov)

May 25, 2018

Vol. 15; No. 32

Co-Editor: Sue Kim, MPH

Week Ending May 19, 2018 | WEEK 20

Michigan Influenza Activity
No Activity
<b><u>Sporadic</u></b>
Local
Regional
Widespread

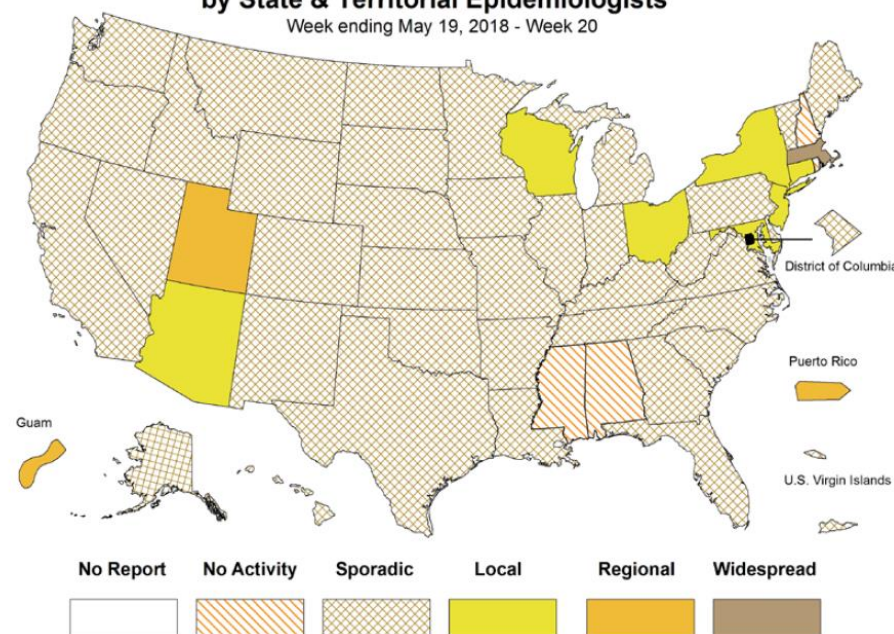
\*Clicking on the current activity level will direct you to the CDC webpage defining each activity level for the geographic spread of influenza

### Updates of Interest

The Michigan flu code has officially been decreased from **Local** activity to **Sporadic** activity for the first week (Week 20).

See Michigan Influenza Activity, above, for an overview of flu activity definitions.

Weekly Influenza Activity Estimates Reported by State & Territorial Epidemiologists\*  
Week ending May 19, 2018 - Week 20



### Influenza-associated Pediatric Mortality

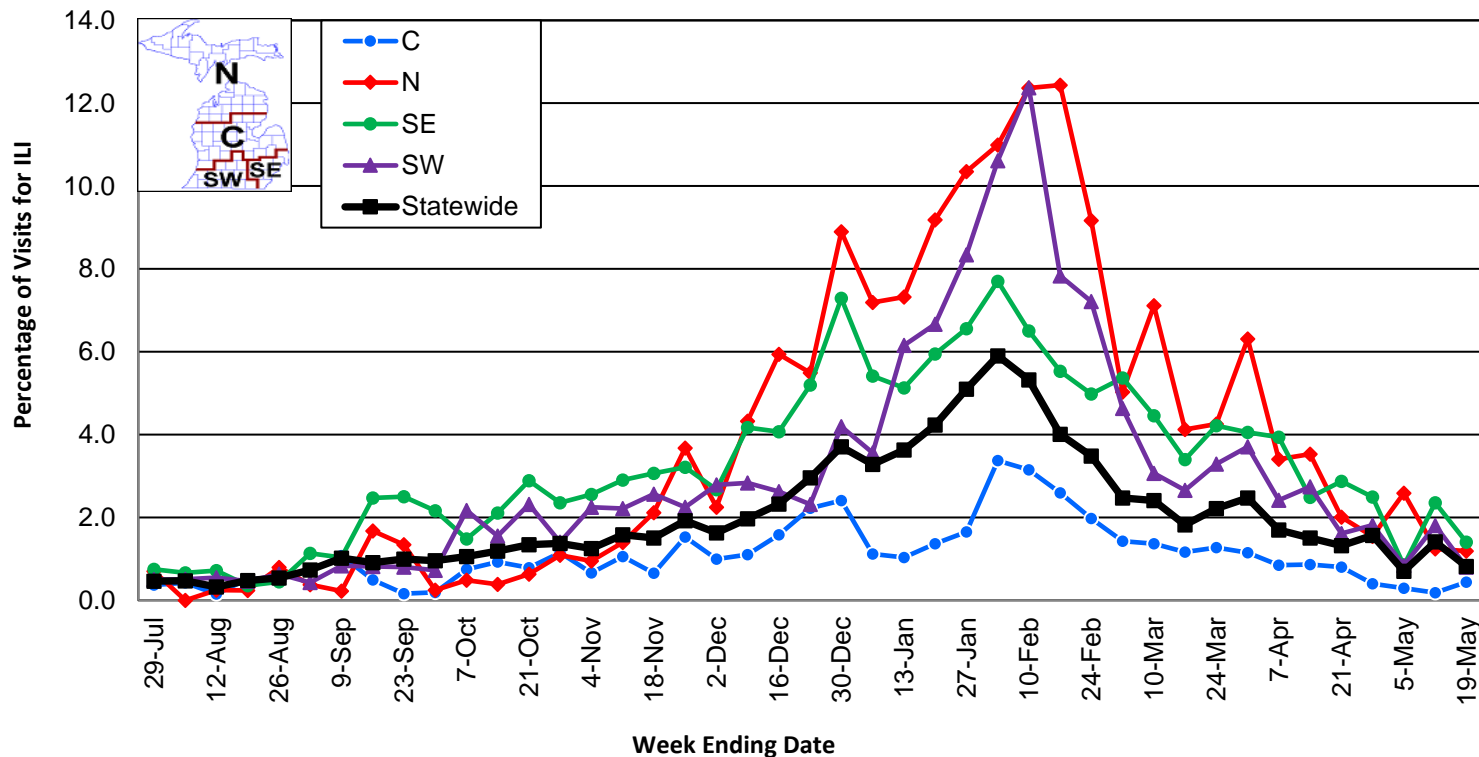
To date, two (2) pediatric influenza deaths (A/H3) have been confirmed by MDHHS for the 2017-2018 flu season. Nationally, 169 influenza-associated pediatric deaths have been reported thus far for the 2017-2018 flu season.

- Number of reports by region: 31 total [C(8), N(3), SE(14), SW(6)]
- Proportion of visits due to ILI: ↓ 0.8% (regional baseline\*: 1.8%)
- A total of 90 patient visits due to ILI were reported out of 10,959 office visits

\*Regional baseline is developed by calculating the mean percentage of patient visits for ILI during non-influenza weeks for the previous three seasons and adding two standard deviations.

**Become a Sentinel Provider! Contact:**  
[EckelS1@michigan.gov](mailto:EckelS1@michigan.gov)

Percentage of Visits for Influenza-like Illness (ILI)  
 Reported by Sentinel Providers, Statewide and Regions  
 2016-17 and 2017-18 Flu Seasons

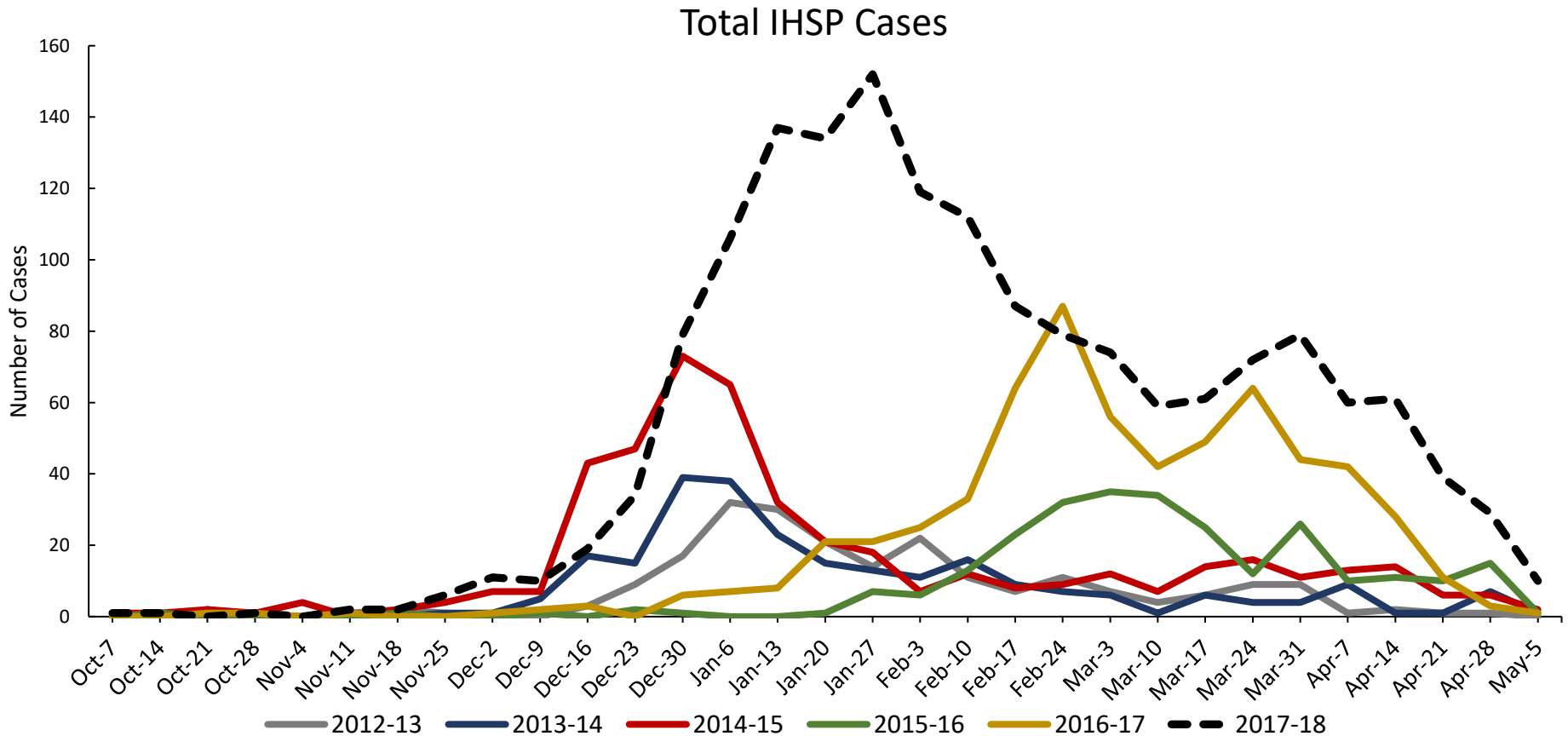


### National Surveillance

In the United States, 1.2% of outpatient visits were due to influenza-like illness, which is below the national baseline of 2.2%.

### Influenza Hospitalization Surveillance Project

The CDC Influenza Hospitalization Surveillance Project (IHSP) provides population-based rates of hospitalization due to severe influenza-related illness through active surveillance and chart review of lab-confirmed cases from Oct. 1, 2017 until Apr. 30, 2018, for Clinton, Eaton, Ingham, Genesee, and Washtenaw counties. Since Oct. 1, there have been a total of **1,636 (149 pediatric, 1,487 adult)** influenza-related hospitalizations reported in the catchment area for the 2017-2018 season.



washtenaw County was added in 2017-2018

\*Surveillance period has ended as of April 30<sup>th</sup>, 2018 and will resume October 1<sup>st</sup>, 2018

MDHHS Bureau of Laboratories reported no new positive influenza results (0C, 0N, 0SE, 0SW).

Respiratory Virus	# Positive Respiratory Virus Results by Region				Overall Total
	C	N	SE	SW	
2009 A/H1N1pdm	28	4	22	26	<b>80</b>
Influenza A/H3	214	41	105	219	<b>579</b>
Influenza B	68	15	49	88	<b>220</b>
<b>Total</b>	<b>310</b>	<b>60</b>	<b>176</b>	<b>333</b>	<b>879</b>

## Michigan Sentinel Clinical Lab Respiratory Virus Data

Seven (7) sentinel clinical labs (1SE, 2SW, 4C, 0N) reported during this week

### SE Region

- Influenza A: low/sporadic
- Influenza B: low/sporadic
- Parainfluenza: no data available
- RSV: low/sporadic
- Adenovirus: no data available
- hMPV: no data available

### Central Region

- Influenza A: low/sporadic
- Influenza B: low/sporadic
- Parainfluenza: low
- RSV: low
- Adenovirus: sporadic
- hMPV: low/sporadic

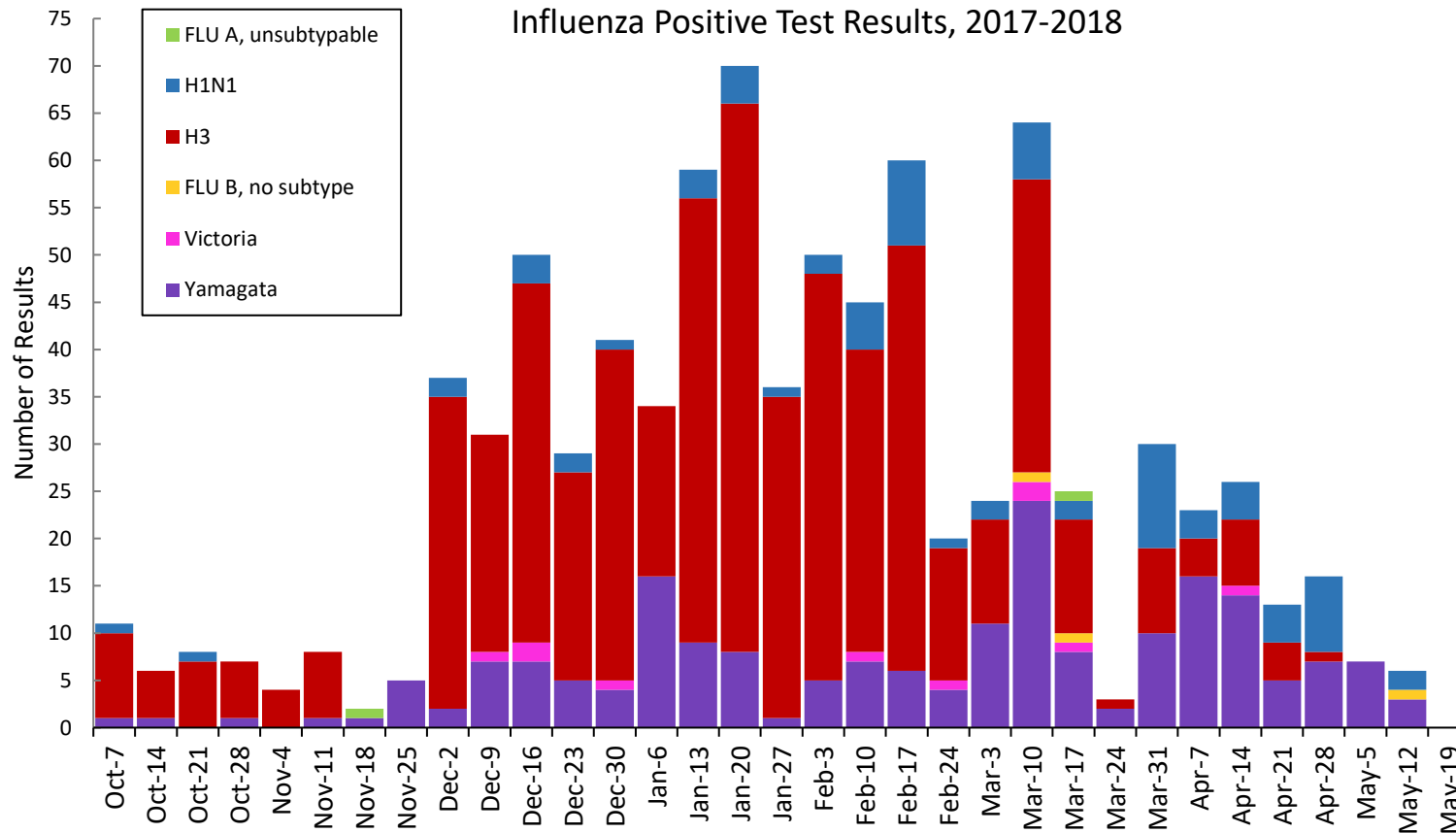
### SW Region

- Influenza A: low/sporadic
- Influenza B: low/sporadic
- Parainfluenza: low
- RSV: low
- Adenovirus: sporadic
- hMPV: low; decreasing

### North Region

- No data available

Influenza Positive Test Results, 2017-2018



Based on STARLIMS MDHHS BOL Testing Portal

Note: Flu B subtyping will be reported based on MDHHS BOL testing runs (roughly each month) and will be backtracked into this graph

Latest MDHHS BOL Flu B subtyping run: **May 11, 2018**.

There were no (ON, OC, OSE, OSW) new respiratory viral outbreak reported to MDHHS during this time period.

Respiratory outbreaks for the 2017-2018 season are listed in the table below.

Facility Type	C	N	SE	SW	Total	2015-2016 Total	2016-2017 Total
Schools: K-12 & College	9		2	3	14	10	25
Long-term Care / Assisted Living Facility	93	10	66	69	238	60	138
Healthcare Facility	2		2		4	11	23
Daycare	2			2	4	2	3
Homeless Shelter						0	1
Correctional Facility	1	4	1	4	10	2	2
Other						2	3
<b>Total</b>	<b>107</b>	<b>14</b>	<b>71</b>	<b>78</b>	<b>270</b>	<b>87</b>	<b>195</b>

## Did you know?

Congregate setting outbreaks of viral respiratory illnesses are required to be reported to your local health department? See:

- [Influenza Guidance for Healthcare Providers](#)
- [Guideline for influenza and Respiratory Virus Outbreaks in Long-Term Care Facilities](#)

## FluBytes

- [Seasonal Flu Economic Burden: Updated Estimate Puts Annual US Flu Price Tag at \\$11.2 Billion](#)

## MDHHS Contributors

**Bureau of Family Health Services -**

**Bureau of Epidemiology and Population Health –**  
S. Bidol, MPH, S. Eckel, MPH, S. Kim, MPH, M. Ladisky

**Bureau of Labs –** B. Robeson, MT, V. Vavricka, MS

For questions or to be added to the distribution list, please contact Seth Eckel at [EckelS1@michigan.gov](mailto:EckelS1@michigan.gov)