



# MI Flu Focus

## Influenza Surveillance Updates

### Bureaus of Epidemiology and Laboratories



Editor: Stefanie Cole, RN, MPH   ColeS4@michigan.gov   January 6, 2016   Vol. 12; No. 43

### Influenza Surveillance Report for the Week Ending December 26, 2015

**MI's Influenza**  
**Activity Level:**  
 Sporadic

**Updates of Interest:**

- China [recently confirmed](#) 2 human cases of avian influenza A(H5N6); there have been 6 H5N6 cases worldwide to date.

#### Michigan Disease Surveillance System

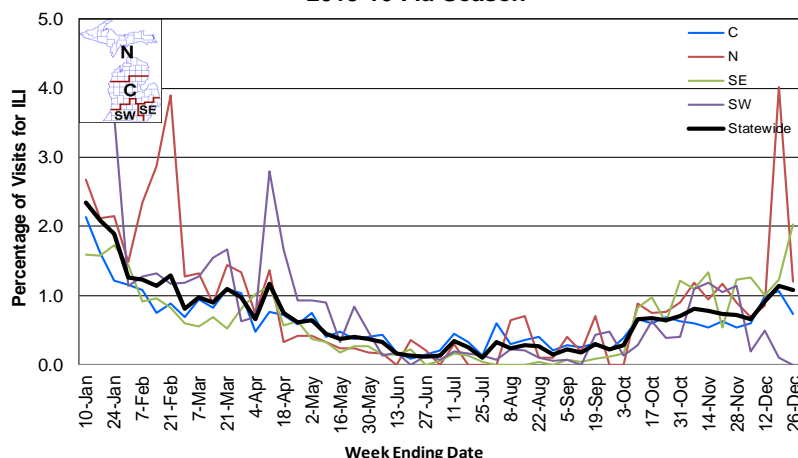
MDSS influenza data indicated that compared to levels from the previous week, both aggregate and individual reports have decreased. Aggregate and individual reports were also lower than levels seen during the same time period last year.

#### Emergency Department Surveillance

Compared to levels from the week prior, emergency department visits from constitutional and respiratory complaints had both increased. Levels of constitutional and respiratory complaints were lower than those recorded during the same time period last year.

- 19 constitutional alerts (3SE, 4SW, 8C, 3N, 1 Statewide)
- 10 respiratory alerts (1SE, 2SW, 3C, 2N, 2 Statewide)
- Last MIFF report: 8 constitutional alerts (1SE, 4C, 2N, 1 Statewide), 5 respiratory alerts (1SE, 1SW, 2C, 1N)

**Percentage of Visits for Influenza-like Illness (ILI) Reported by Sentinel Providers, Statewide and Regions 2015-16 Flu Season**



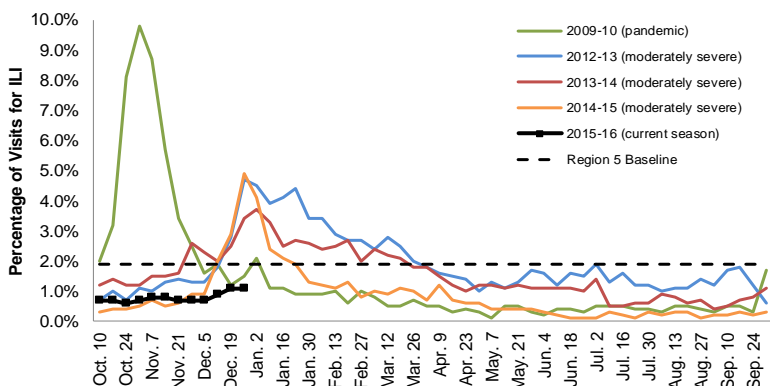
#### Sentinel Provider Surveillance

The proportion of visits due to influenza-like illness (ILI) remained the same at 1.1% overall; this is below the regional baseline (1.9%). A total of 52 patient visits due to ILI were reported out of 4,823 office visits. Please note: These rates may change as additional reports are received.

Number of Reports by Region (25 total):

- C (9)
- N (3)
- SE (10)
- SW (3)

**Percentage of Visits for Influenza-like Illness (ILI) Reported by the US Outpatient Influenza-like Illness Surveillance Network (ILINet): Michigan, Select Seasons**



#### Become a Sentinel Provider!

As part of pandemic influenza surveillance, CDC and MDHHS highly encourage year-round participation from all sentinel providers. New practices are encouraged to join the sentinel surveillance program today! Contact Stefanie Cole ([ColeS4@michigan.gov](mailto:ColeS4@michigan.gov)) for more information.

#### Table of Contents:

Michigan Surveillance.....1-2  
 National Surveillance.....3  
 International Surveillance....3  
 FluBytes .....3

### Hospital Surveillance

The CDC Influenza Hospitalization Surveillance Project provides population-based rates of hospitalization due to severe influenza illness through active surveillance and chart review of lab-confirmed cases beginning on Oct. 1, 2015, for Clinton, Eaton, Genesee, and Ingham counties. Since Oct. 1, there have been 3 pediatric and 3 adult hospitalizations reported within the catchment area.

The MDHHS Influenza Sentinel Hospital Network monitors influenza hospitalizations reported voluntarily by hospitals statewide, and 13 hospitals (N, C, SE & SW) reported. Results for the 2015-16 flu season are listed in the table below. Additional hospitals are welcome to join; please contact Seth Eckel at [eckels1@michigan.gov](mailto:eckels1@michigan.gov).

Age Group	New Flu Hospitalizations Reported	Total 2015-16 Flu Hospitalizations Reported to Date
0-4 years	2 (SE)	3 (SE)
5-17 years	0	0
18-49 years	1 (SE)	5 (1N, 4SE)
50-64 years	0	1 (SE)
65 years & older	1 (SE)	3 (2SE, 1SW)
<b>Total</b>	<b>4 (SE)</b>	<b>12 (1N, 10SE, 1SW)</b>

### Laboratory Surveillance

MDHHS Bureau of Laboratories reported 9 new positive influenza results: 8 2009 A/H1N1pdm and 1 A/H3. A total of 45 positive influenza results have been reported for the 2015-16 season. Influenza results for the 2015-16 season are in the table below.

Respiratory Virus	# Positive Respiratory Virus Results by Region				Total	# Specimens Antigenically Characterized	# Tested for Antiviral Resistance
	C	N	SE	SW			# Resistant / Total # Tested
2009 A/H1N1pdm	1	1	24	2	28	2* (2 A/California/07/2009-like (H1N1)pdm09**)	1 / 2
Influenza A/H3	4		8	3	15	2* (2 A/Switzerland/9715293/2013-like†)	
Influenza B			1		1		
A / unsubtypeable				1	1		
RSV			2		2		

\*Specimens antigenically characterized by CDC; \*\*A/California/07/2009-like (H1N1)pdm09 is the H1N1 component of the 2015-16 Northern Hemisphere flu vaccines; †A/Switzerland/9715293/2013-like (H3N2) is the H3N2 component of the 2015-16 Northern Hemisphere flu vaccines.

In addition, 11 sentinel clinical labs (4SE,1SW,5C,1N) reported influenza results. Seven labs (SE,SW,C) reported sporadic or slightly increasing influenza A activity. Two labs (SE,C) reported sporadic influenza B activity. Three labs (SE,C) reported sporadic or low Parainfluenza activity. Nine labs (SE,SW,C) reported low to moderate RSV activity, with an increasing trend continuing. Five labs (SE,SW,C) reported low or slightly increasing Adenovirus activity. Three labs (SE,C) reported sporadic hMPV activity. Most testing volumes showed further increases with many sites now in the moderate range and several approaching high levels.

### Influenza Congregate Settings Outbreaks

There were no new respiratory facility outbreaks reported. There have been a total of 2 respiratory facility outbreaks reported to MDHHS for the 2015-16 season. Respiratory facility outbreaks are listed in the table below by facility type and surveillance region.

Facility Type	C	N	SE	SW	Total
K-12 School	0	0	0	1	1
Long-term Care / Assisted Living Facility	1	0	0	0	1
<b>Total</b>	<b>1</b>	<b>0</b>	<b>0</b>	<b>1</b>	<b>2</b>

### Influenza-associated Pediatric Mortality

No influenza-associated pediatric deaths have been reported to MDHHS for the 2015-16 season.

**National:** In the United States, flu activity increased slightly with 2.6% of outpatient visits due to influenza-like illness, which was above the national baseline of 2.1%. Six of 10 regions reported ILI at or above region-specific baselines. No new influenza-associated pediatric deaths were reported, for a total of 4 pediatric deaths for the 2015-16 flu season. Additional information is in the weekly FluView reports available at: [www.cdc.gov/flu/weekly/](http://www.cdc.gov/flu/weekly/).

**International:** Globally, influenza activity generally remained low in both hemispheres. In a few countries in Central and Northern Asia, as well as Eastern and Northern Europe, there were slight increases in flu detections in recent weeks. More information is available at: [www.who.int/influenza/surveillance\\_monitoring/updates/latest\\_update\\_GIP\\_surveillance/en/](http://www.who.int/influenza/surveillance_monitoring/updates/latest_update_GIP_surveillance/en/).

# FluBytes



## UPCOMING WEBINAR: HCP VACCINATIONS

The National Foundation for Infectious Diseases (NFID) is hosting a webinar on January 13 from 12:00-1:00 PM ET titled, "Vaccinations for Healthcare Professionals." Dr. William Atkinson and Patricia Stinchfield will be presenting on the importance of vaccines for healthcare professionals as well as communication strategies and tips.

Please visit [this website](#) to register for this upcoming webinar.

## AVIAN INFLUENZA NEWS IN NORTH AMERICA

- [Iowa lifts ban on poultry exhibitions](#)
- Any reports of sick or dead birds should be forwarded immediately to the proper agency:
  - For domestic poultry, contact MDARD:
    - M-F 8AM-5PM, 1-800-292-3939
    - After hours/weekends, 517-373-0440
  - For wildlife (die-off of waterfowl, gulls, or shorebirds), contact DNR:
    - M-F 8AM-5PM, 517-336-5030
    - After hours/weekends, 1-800-292-7800

## AVIAN INFLUENZA INTERNATIONAL NEWS

- WHO: [Human infection with avian influenza A\(H5N6\) virus - China](#)
- [Avian flu strikes more flocks in France, Nigeria, Taiwan](#)
- [China confirms H5N6, H7N9 infections](#)
- [Egret tests positive for H5N6 avian influenza in Hong Kong](#)
- [Travel advisory issued for Shanghai over avian flu](#)

## FLU WEBSITES

[www.michigan.gov/flu](http://www.michigan.gov/flu)  
[www.cdc.gov/flu](http://www.cdc.gov/flu)  
[www.flu.gov](http://www.flu.gov)  
<http://vaccine.healthmap.org/>

## INFLUENZA-RELATED JOURNAL ARTICLES

- [Influenza vaccination rates vary widely in patients with heart failure](#)
- *Nature Genetics*: [Quantifying influenza virus diversity and transmission in humans](#)
  - [NYU study shows minor influenza strains pose significant threats](#)
- [Detecting signals of seasonal influenza severity through age dynamics](#)
- [Increases in absenteeism among health care workers in Hong Kong during influenza epidemics, 2004-2009](#)
  - Flu epidemics were associated with substantial increase in sickness absence and productivity loss among HCWs in Hong Kong
- [Epidemiological and phylogenetic characteristics of influenza B infection in severe acute respiratory infection cases in Beijing, 2014-2015](#)
- [Influenza newspaper reports and the influenza epidemic: an observational study in Fukuoka City, Japan](#)
  - Researchers found the number of newspaper articles reporting flu in a week was related to the incidence of flu 6-10 weeks after media coverage

## OTHER INFLUENZA-RELATED NEWS

- CDC: [143.3 million doses of flu vaccine distributed in U.S.](#)
- [Flu claims 8 lives so far in South Carolina](#)
- [Battling influenza early in the game](#)

Archived editions of FluBytes are available [here](#) and MI FluFocus archives are [here](#).

For questions or to be added to the distribution list, please contact Stefanie Cole at [ColeS4@michigan.gov](mailto:ColeS4@michigan.gov).

### MDHHS Contributors

Bureau of Epidemiology – S. Bidol, MPH, S. Cole, RN, MPH, S. Eckel, MPH  
Bureau of Labs – B. Robeson, MT, V. Vavricka, MS