



# MI Flu Focus

## Influenza Surveillance Updates

### Bureaus of Epidemiology and Laboratories



Editor: Jalyn Ingalls, MA

[IngallsJ@michigan.gov](mailto:IngallsJ@michigan.gov)

December 4, 2017

Vol. 15; No. 7

### Influenza Surveillance Report for the Week Ending November 25, 2017

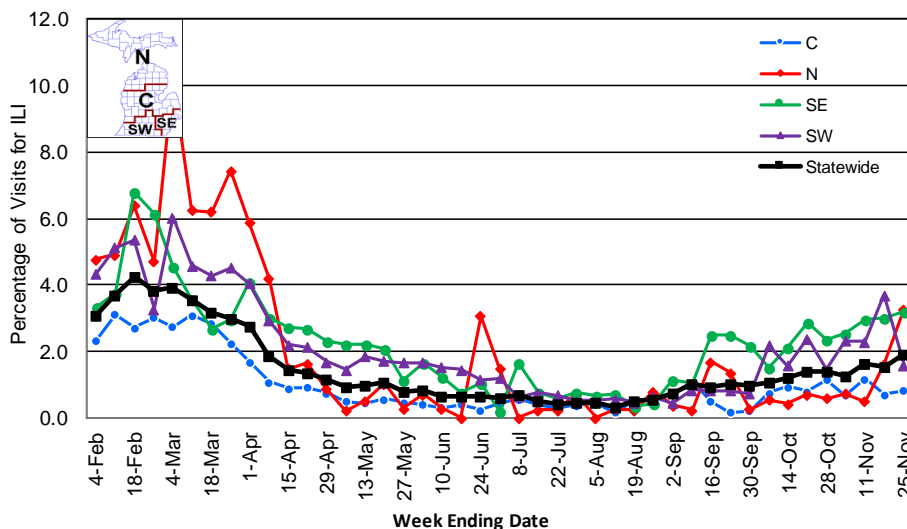
**MI's Influenza Activity Level:**  
Sporadic

**Updates of Interest:** December 3 - 9 is National Influenza Vaccination Week (NIVW). NIVW is a national awareness week focused on highlighting the importance of influenza vaccination. For a list of resources and more information, see FluBytes on page 3.

#### Sentinel Provider Surveillance

The proportion of visits due to influenza-like illness (ILI) increased to 1.9% overall, which is above the regional baseline of 1.8%. A total of 149 patient visits due to ILI were reported out of 7,775 office visits. Please note: These rates may change as additional reports are received.

Percentage of Visits for Influenza-like Illness (ILI) Reported by Sentinel Providers, Statewide and Regions 2016-17 and 2017-18 Flu Seasons



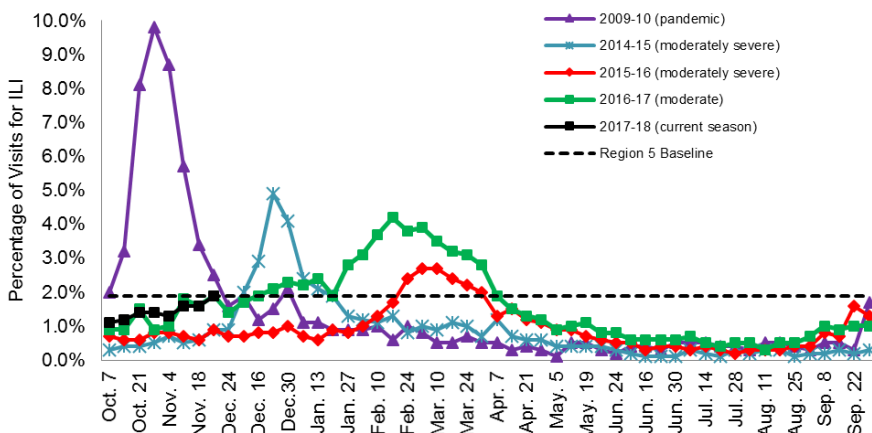
#### Number of Reports by Region

(33 total):

- C (8)
- N (2)
- SE (15)
- SW (8)

**National Surveillance:** In the United States, 2.3% of outpatient visits were due to influenza-like illness, which is above the national baseline of 2.2%.

Percentage of Visits for Influenza-like Illness (ILI) Reported by the US Outpatient Influenza-like Illness Surveillance Network (ILINet); Michigan, Select Seasons



#### Become a Sentinel Provider!

As part of pandemic influenza surveillance, CDC and MDHHS highly encourage year-round participation from all sentinel providers. New practices are encouraged to join the sentinel surveillance program today! Contact Jalyn Ingalls ([IngallsJ@michigan.gov](mailto:IngallsJ@michigan.gov)) for more information.

Additional information is in the weekly FluView reports available at: [www.cdc.gov/flu/weekly](http://www.cdc.gov/flu/weekly).

#### Influenza-associated Pediatric Mortality

No pediatric influenza deaths have been reported to MDHHS during the 2017-2018 flu season. Nationally, 5 influenza-associated pediatric deaths have been reported thus far for the 2017-2018 flu season.

## Hospital Surveillance

The CDC Influenza Hospitalization Surveillance Project provides population-based rates of hospitalization due to severe influenza-related illness through active surveillance and chart review of lab-confirmed cases from Oct. 1, 2017 until Apr. 30, 2018, for Clinton, Eaton, Ingham, Genesee, and Washtenaw counties. Since Oct. 1, there has been **1 pediatric and 11 adult** influenza-related hospitalizations reported in the catchment area for the 2017-2018 season. Note: Cumulative totals may change from week to week as cases are reviewed to determine if they meet the case definition.

The MDHHS Influenza Sentinel Hospital Network monitors influenza-related admissions reported voluntarily by hospitals statewide, with 6 facilities (N, C, SE & SW) reporting during this time period. Results for the 2017-18 flu season are listed in the table below. Additional hospitals are encouraged to join; please contact Seth Eckel at [eckels1@michigan.gov](mailto:eckels1@michigan.gov).

Age Group	New Flu Hospitalizations Reported	Total 2017-18 Flu Hospitalizations Reported to Date
0-4 years	0	0
5-17 years	0	1 (N)
18-49 years	0	2 (SE)
50-64 years	1 (SE)	6 (3N, 3SE)
65 years & older	3 (SE)	10 (4N, 6SE)
<b>Total</b>	<b>4 (SE)</b>	<b>19 (8N, 11SE)</b>

## Laboratory Surveillance

MDHHS Bureau of Laboratories reported no new positive influenza results during this time period. A total of 48 positive influenza results have been reported for the 2017-18 season. Influenza results for the 2017-18 season are in the table below.

Respiratory Virus	# Positive Respiratory Virus Results by Region				Total	# Specimens Antigenically Characterized	# Tested for Antiviral Resistance
	C	N	SE	SW			# Resistant / Total # Tested
2009 A/H1N1pdm			2		2		
Influenza A/H3	10	4	24	3	41		
Influenza B		1	4		5		
A / unsubtypeable							
LAIV recovery							

In addition, 9 sentinel clinical labs (2SE, 2SW, 5C, 0N) reported influenza testing results. Eight (8) labs (SE, SW, C) reported sporadic or low influenza A activity. Four (4) labs (SE, SW, C) reported sporadic influenza B activity. Three labs (SE, SW, C) reported slightly increasing Parainfluenza activity. Seven (7) labs (SE, SW, C) reported low or slightly increasing RSV activity. Three (3) labs (SE, SW, C) reported sporadic Adenovirus activity. Two (2) labs reported low hMPV activity. Testing volumes continue to slowly trend upwards with most sites near the moderate range.

## Congregate Setting Outbreaks of Viral Respiratory Illness

There was 1 new respiratory outbreak reported to MDHHS during this time period. Respiratory facility outbreaks for the 2017-2018 season are listed in the table below.

Facility Type	C	N	SE	SW	Total
K-12 School	2				<b>2</b>
Long-term Care / Assisted Living Facility	2	1	1		<b>4</b>
Healthcare Facility					
Daycare	1				<b>1</b>
Homeless Shelter					
<b>Total</b>	<b>5</b>	<b>1</b>	<b>1</b>		<b>7</b>

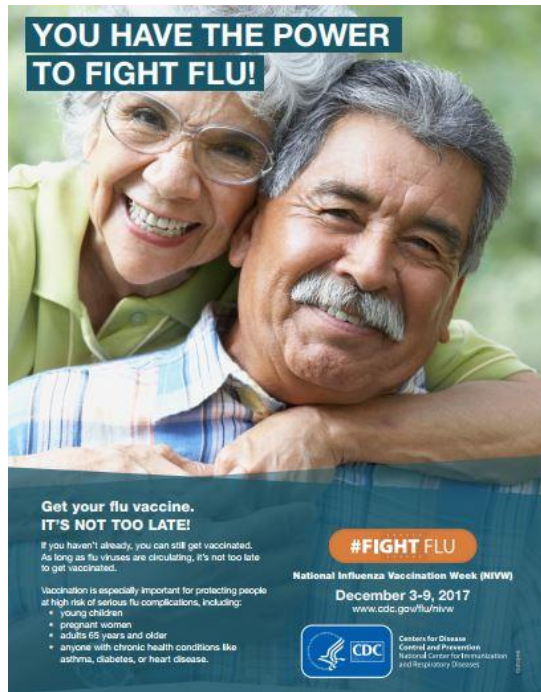


## HEPATITIS A OUTBREAKS: RESPONSE AND PREVENTION WEBINAR

The California Immunization Coalition is hosting a webinar on the hepatitis A outbreak in California. The webinar will describe hepatitis A modes of transmission, the unique characteristics of the California outbreak, and identify strategies that California counties have employed in response to the outbreak, and strategies to increase hepatitis A vaccination. The webinar is scheduled for tomorrow, December 5, 2017 from 3:00pm to 4:00pm (ET). Advanced [registration](#) is required.

## NATIONAL INFLUENZA VACCINATION WEEK

[National Influenza Vaccination Week](#) (NIVW) is December 3-9! NIVW is a national awareness week focused on highlighting the importance of influenza vaccination. Please continue to focus efforts on vaccinating patients, and educating about the importance of the flu vaccine. As a reminder, the Centers for Disease Control and Prevention has created a toolkit of materials to help you with your efforts. The toolkit includes: print materials, images to share, sample newsletter templates, social media posts, key messages, videos that can be shared, and other web tools. Please use this toolkit as a guide as you share the importance of the flu vaccine this week!



## FLU WEBSITES

- [www.michigan.gov/flu](http://www.michigan.gov/flu)
- [www.cdc.gov/flu](http://www.cdc.gov/flu)
- [www.flu.gov](http://www.flu.gov)
- <http://vaccine.healthmap.org/>

## INFLUENZA-RELATED JOURNAL ARTICLES

- [Efficacy and safety of Oseltamivir in children: Systematic review and individual patient data meta-analysis of randomized controlled trials](#)
- [The M2 protein of live attenuated influenza vaccine encodes a mutation that reduces replication in human nasal epithelial cells](#)
  - Summary: [Genetic mutation in FluMist could be altered to restore effectiveness](#)
- [Tdap vaccination among healthcare personnel – 21 states, 2013](#)
- [Influenza vaccination in preventing outbreaks in schools: A long term ecological view](#)
- [The effectiveness of trivalent inactivated influenza vaccine in children with acute leukemia](#)
- [Estimating disease burden of a potential A\(H7N9\) pandemic influenza outbreak in the United States](#)
- [Immune responses to intradermal and intramuscular inactivated influenza vaccine among older age group](#)
- [Vaccine effectiveness against laboratory-confirmed influenza hospitalizations among young children during the 2010-11 to 2013-14 influenza seasons in Ontario, Canada](#)

## OTHER INFLUENZA-RELATED NEWS

- [Many healthcare workers do not know correct influenza precautions](#)
- [Essentia fires about 50 workers for refusing to get flu shot](#)
- [Chasing seasonal influenza – the need for a universal influenza vaccine](#)
- [When it comes to flu, docs should be 'vaccine insisters'](#)
- [Scientists are one step closer to a "personalized" flu shot](#)
- [Q&A: Flu vaccination coverage benefits economy, not just overall health](#)
- [MRSA ventilator-associated pneumonia: Myth or reality?](#)

## AVIAN INFLUENZA INTERNATIONAL NEWS

- [H7N9 virulent mutants detected in chickens in China pose an increased threat to humans](#)
- [H5N6 avian flu reassortant found in recent Korean outbreak](#)

Archived editions of FluBytes are available [here](#) and MI Flu Focus archives are [here](#).

For questions or to be added to the distribution list, please contact Jalyn Ingalls at [ingallsj@michigan.gov](mailto:ingallsj@michigan.gov)

### MDHHS Contributors

Bureau of Epidemiology – S. Bidol, MPH, J. Ingalls, MA, S. Eckel, MPH  
Bureau of Labs – B. Robeson, MT, V. Vavricka, MS