



Michigan Flu Focus

Weekly Influenza Surveillance Report



Editor: Sue Kim, MPH

Editor Email: KimS2@michigan.gov

December 28, 2018

Vol. 16; No.12

Week Ending December 22, 2018 | WEEK 51

Michigan Influenza Activity
No Activity
Sporadic
Local
Regional
Widespread

*Clicking on the current activity level will direct you to the CDC webpage defining each activity level for the geographic spread of influenza

Updates of Interest

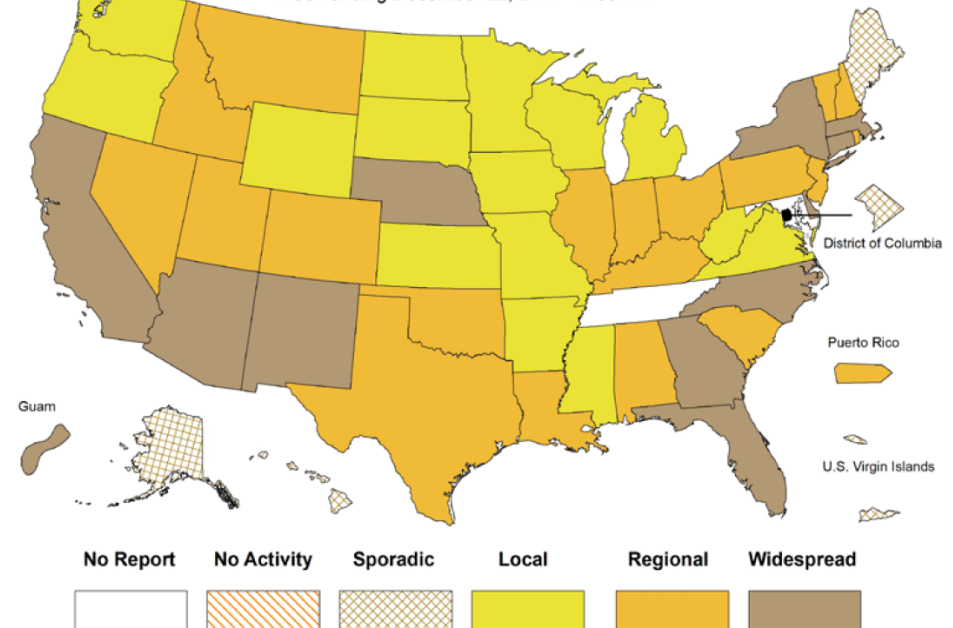
The Michigan Department of Health and Human Services has confirmed Michigan's first influenza-related pediatric death for the 2018-2019 flu season.

As a reminder, all influenza-related pediatric flu deaths are **required** to be reported. Please see link for additional guidance for influenza-related pediatric mortality investigations:

https://www.michigan.gov/documents/mdhhs/Influenza_pediatric_mortality_investigation_603970_7.pdf

Weekly Influenza Activity Estimates Reported by State & Territorial Epidemiologists*

Week ending December 22, 2018 - Week 51



Source: CDC FluView

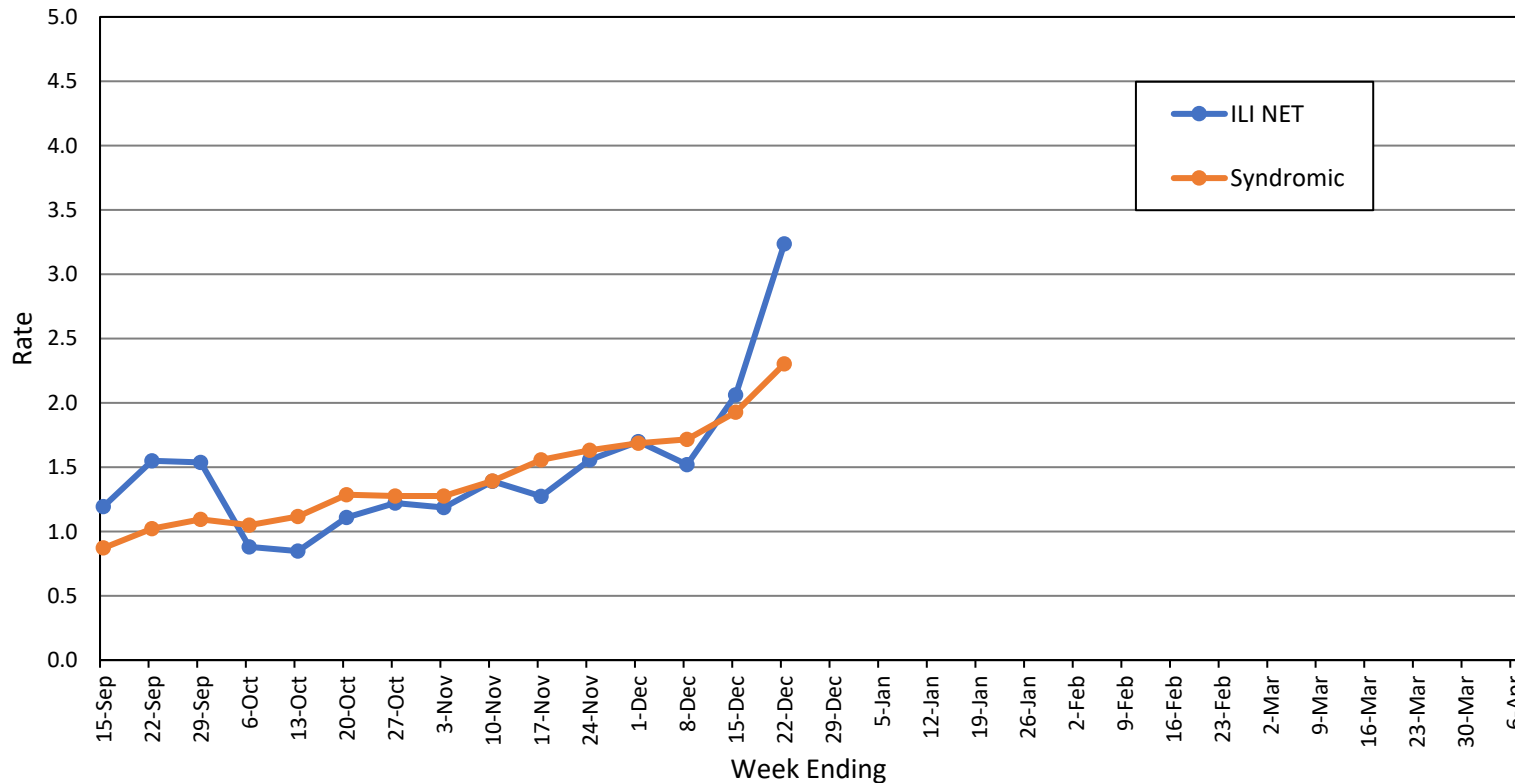
Influenza-associated Pediatric Mortality

One (1) pediatric influenza (A/H1N1pdm09) death has been confirmed by MDHHS for the 2018-2019 flu season. Nationally, 11 influenza-associated pediatric deaths have been reported thus far for the 2018-2019 flu season.

- Number of reports by region: 22 total [C(4), N(3), SE(11), SW(4)]
- Proportion of visits due to ILI: **↑ 3.2%** (regional baseline*: 1.8%)
- A total of 203 patient visits due to ILI were reported out of 6,273 office visits

*Regional baseline is developed by calculating the mean percentage of patient visits for ILI during non-influenza weeks for the previous three seasons and adding two standard deviations.

MI Statewide ILI NET and Syndromic Surveillance Rates, 2018-2019



National Surveillance

In the United States, 3.3% of outpatient visits were due to influenza-like illness (ILI), which is above the national baseline of 2.2%.

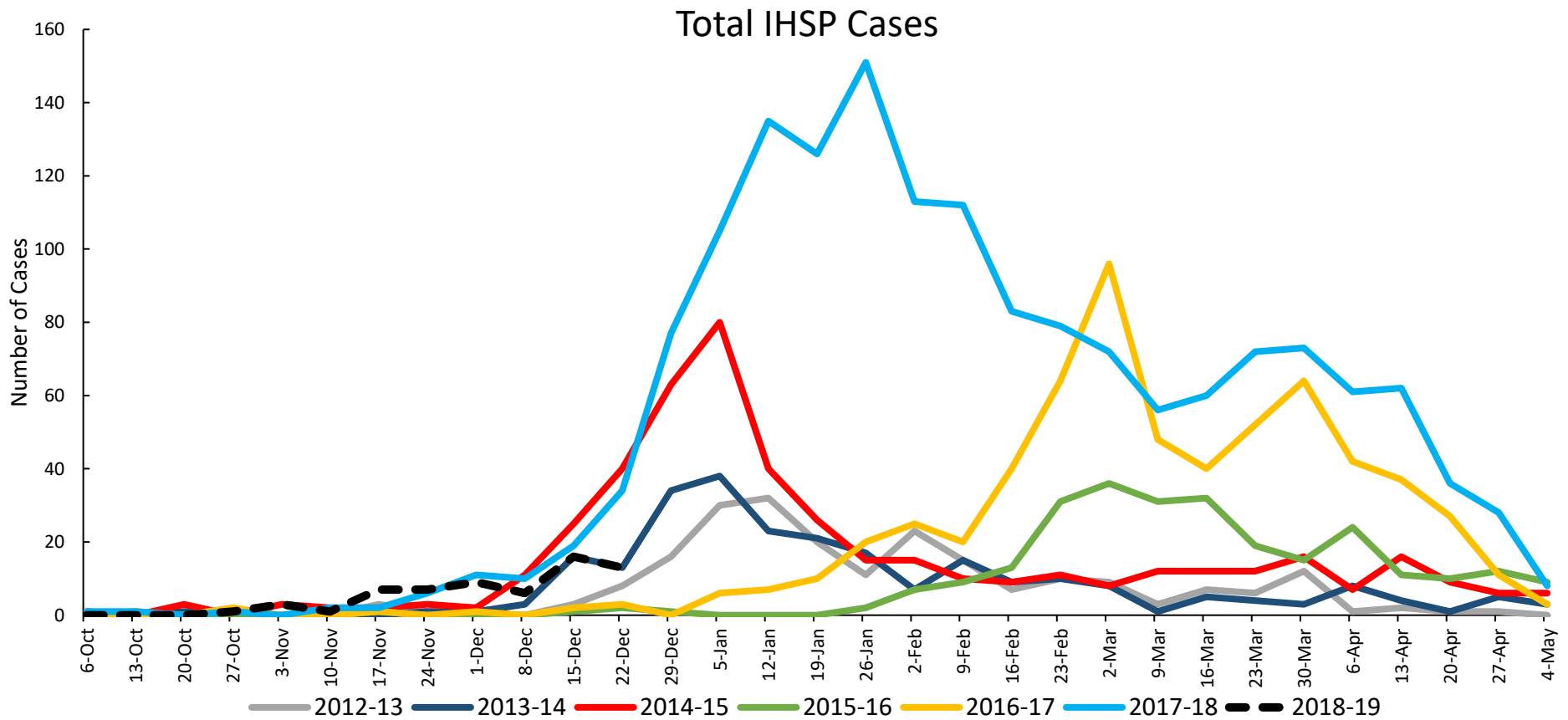
Become a sentinel provider!

Contact Shelly Doeblner at DoeblerM@michigan.gov

Influenza-related Hospitalization Surveillance Week Ending December 22

Influenza Hospitalization Surveillance Project

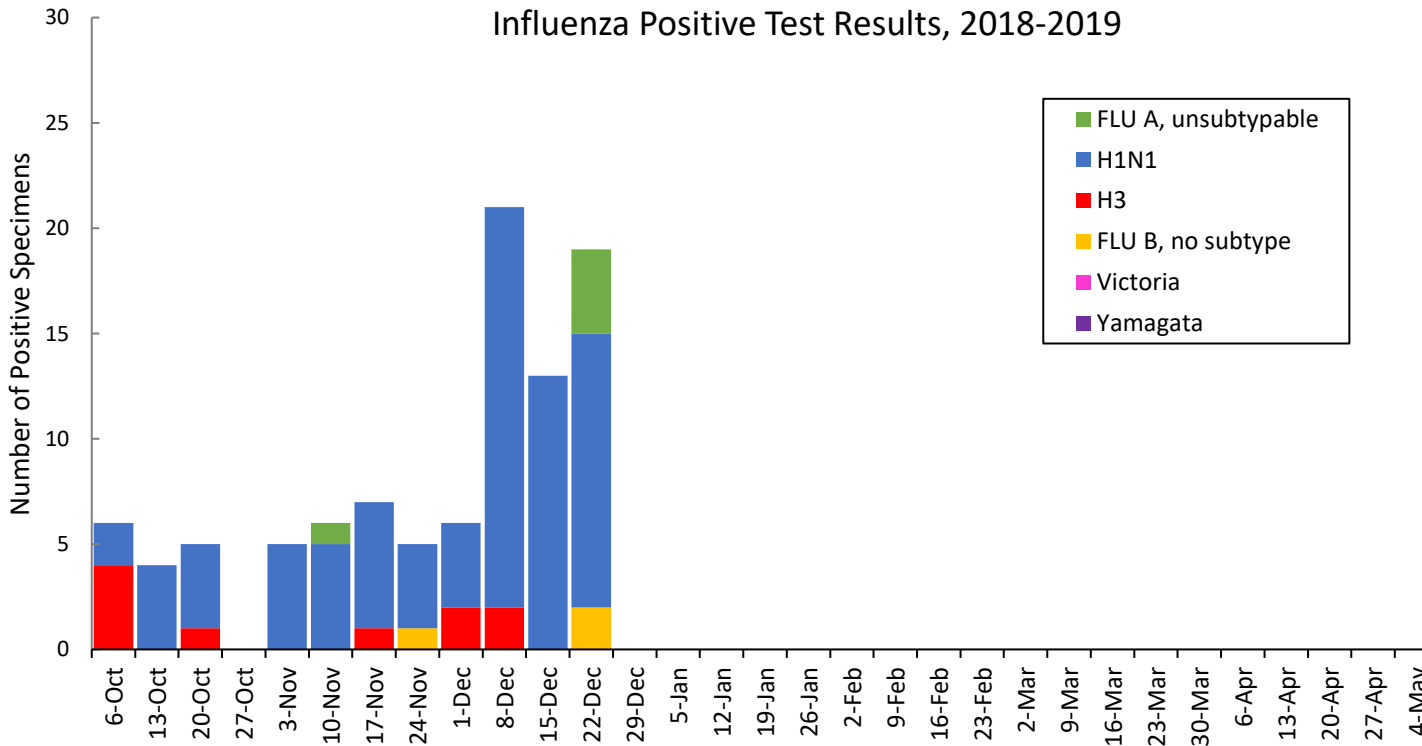
The CDC Influenza Hospitalization Surveillance Project (IHSP) provides population-based rates of hospitalization due to severe influenza-related illness through active surveillance and chart review of lab-confirmed cases from Oct. 1, 2018 until Apr. 30, 2019, for Clinton, Eaton, Ingham, Genesee, and Washtenaw counties. Since Oct. 1, there have been **63 (12 pediatric, 51 adult)** influenza-related hospitalizations reported in the catchment area for the 2018-2019 season.



Washtenaw County was added in 2017-2018

MDHHS Bureau of Laboratories reported 17 new positive influenza results (4C, 2N, 3SE, 8SW).

Respiratory Virus	# Positive Respiratory Virus Results by Region				Overall Total	2017-18 Total
	C	N	SE	SW		
2009 A/H1N1pdm	39	5	15	22	84	80
Influenza A/H3	4	2	2	5	13	579
Influenza B	0	0	2	1	3	220
Total	43	7	19	28	97	879



Based on STARLIMS MDHHS BOL Testing Portal

Note: Flu B subtyping will be reported based on MDHHS BOL testing runs (roughly each month) and will be backtracked into this graph

Most recent MDHHS BOL Flu B subtyping run:

Michigan Sentinel Clinical Lab Respiratory Virus Data

Eight (8) sentinel clinical labs (1SE, 1SW, 5C, 1N) reported during this week

SE Region

- Influenza A: increasing
- Influenza B: very low
- Parainfluenza: slightly increasing
- RSV: moderate-high; increasing
- Adenovirus: slightly increasing
- hMPV: slightly increasing

Central Region

- Influenza A: low or some increases
- Influenza B: no activity
- Parainfluenza: low
- RSV: low or some increases
- Adenovirus: low
- hMPV: low

SW Region

- Influenza A: increasing
- Influenza B: sporadic
- Parainfluenza: low
- RSV: increasing
- Adenovirus: very low
- hMPV: very low

North Region

- Influenza A: sporadic
- Influenza B: no activity
- Parainfluenza: no data available
- RSV: low
- Adenovirus: no data available
- hMPV: no data available

There were no (ON, OC, OSE, OSW) new respiratory viral outbreaks reported to MDHHS during this time period. Respiratory outbreaks for the 2018-2019 season are listed in the table below.

Facility Type	C	N	SE	SW	Total	2016-2017 Total	2017-2018 Total
Schools: K-12 & College	1	0	0	0	1	25	14
Long-term Care / Assisted Living Facility	0	1	1	0	2	138	238
Healthcare Facility	0	0	0	0	0	23	4
Daycare	0	0	0	0	0	3	4
Homeless Shelter	0	0	0	0	0	1	0
Correctional Facility	0	0	0	0	0	2	10
Other	0	0	0	0	0	3	0
Total	1	1	1		3	195	270

Did you know?

Congregate setting outbreaks of viral respiratory illnesses are required to be reported to your local health department? See:

- [Influenza Guidance for Healthcare Providers](#)
- [Guideline for influenza and Respiratory Virus Outbreaks in Long-Term Care Facilities](#)

FluBytes

- [Regular Flu Shots Can Save Heart Failure Patients' Lives](#)
- [WHO Influenza Update- N. Hemisphere on the rise](#)
- [US Flu Levels Steadily Increasing, CDC reports](#)

MDHHS Contributors

Bureau of Epidemiology and Population Health – S. Bidol, MPH, S. Eckel, MPH, S. Kim, MPH

Bureau of Family Health Services – M. Doebler, MPH

Bureau of Labs – B. Robeson, MT, V. Vavricka, MS

For questions or to be added to the distribution list, please contact Sue Kim at KimS2@michigan.gov