



# Michigan Flu Focus

## Weekly Influenza Surveillance Report



Editor: Seth Eckel, MPH  
Co-Editor: Macey Ladisky

Editor Email: [EckelS1@michigan.gov](mailto:EckelS1@michigan.gov)

February 16, 2018

Vol. 15; No. 18

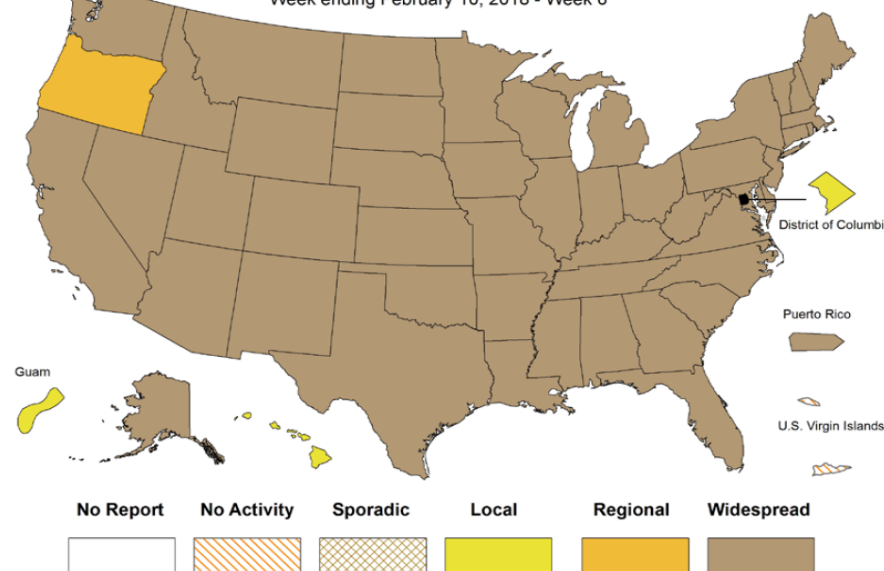
Week Ending February 10, 2018 | WEEK 6

Michigan Influenza Activity
No Activity
Sporadic
Local
Regional
<b><u>Widespread</u></b>

\*Clicking on the current activity level will direct you to the CDC webpage defining each activity level for the geographic spread of influenza

### Weekly Influenza Activity Estimates Reported by State & Territorial Epidemiologists\*

Week ending February 10, 2018 - Week 6



## Updates of Interest

Two influenza-related Morbidity and Mortality Weekly Report articles were recently released by the CDC – a midseason update on influenza activity, and interim vaccine effectiveness data.

- [Update: Influenza Activity — United States, October 1, 2017–February 3, 2018](#)
- [Interim Estimates of 2017–18 Seasonal Influenza Vaccine Effectiveness — United States, February 2018](#)

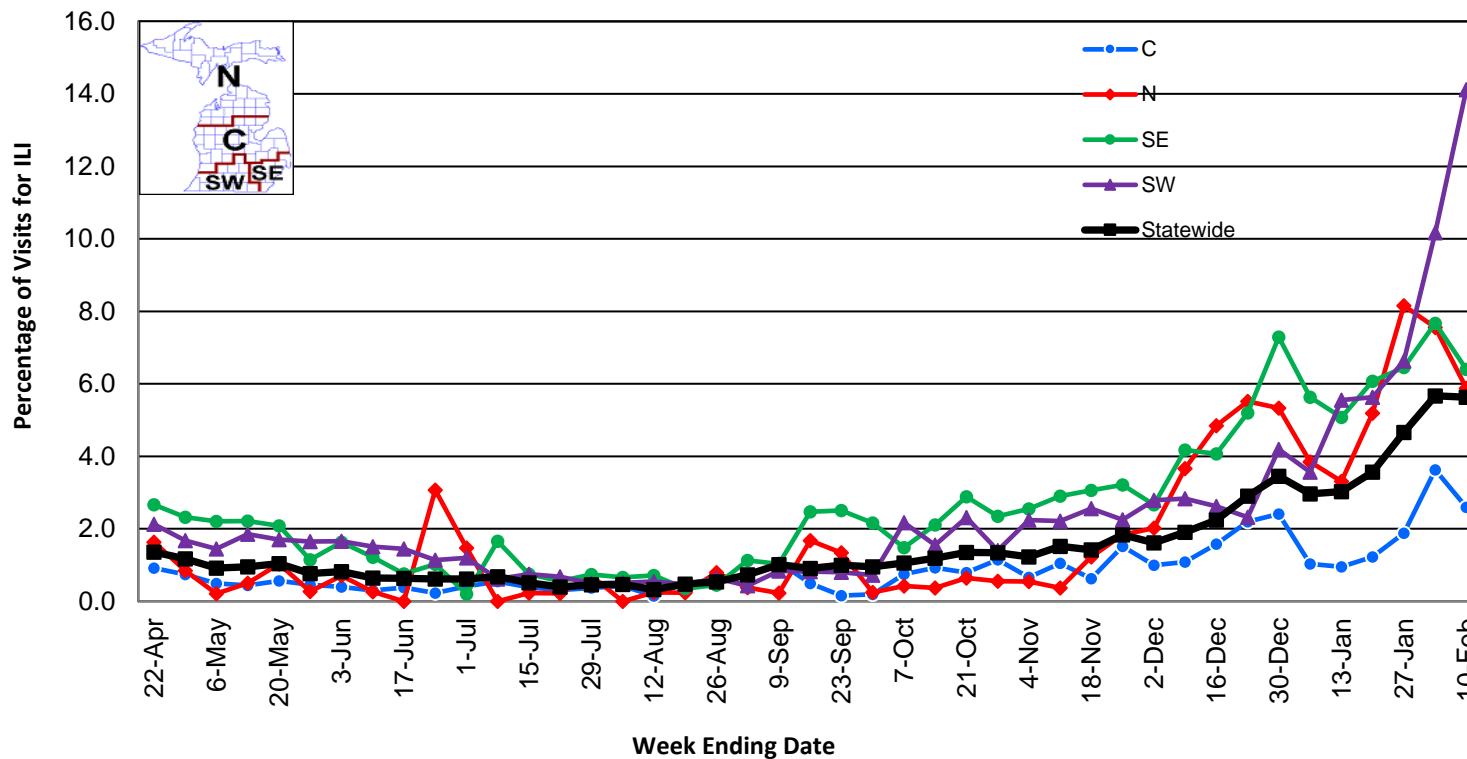
### Influenza-associated Pediatric Mortality

One pediatric influenza death (A/H3) has been confirmed by MDHHS to date for the 2017-2018 flu season. Nationally, eighty-four (84) influenza-associated pediatric deaths have been reported thus far for the 2017-2018 flu season.

- Number of reports by region: 33 total [C(10), N(2), SE(14), SW(7)]
- Proportion of visits due to ILI: ↓ 5.6 % (regional baseline\*: 1.8%)
- A total of 634 patient visits due to ILI were reported out of 11,258 office visits

\*Regional baseline is developed by calculating the mean percentage of patient visits for ILI during non-influenza weeks for the previous three seasons and adding two standard deviations.

Percentage of Visits for Influenza-like Illness (ILI)  
Reported by Sentinel Providers, Statewide and Regions  
2016-17 and 2017-18 Flu Seasons



**Become a Sentinel Provider! Contact:**  
[EckelS1@michigan.gov](mailto:EckelS1@michigan.gov)

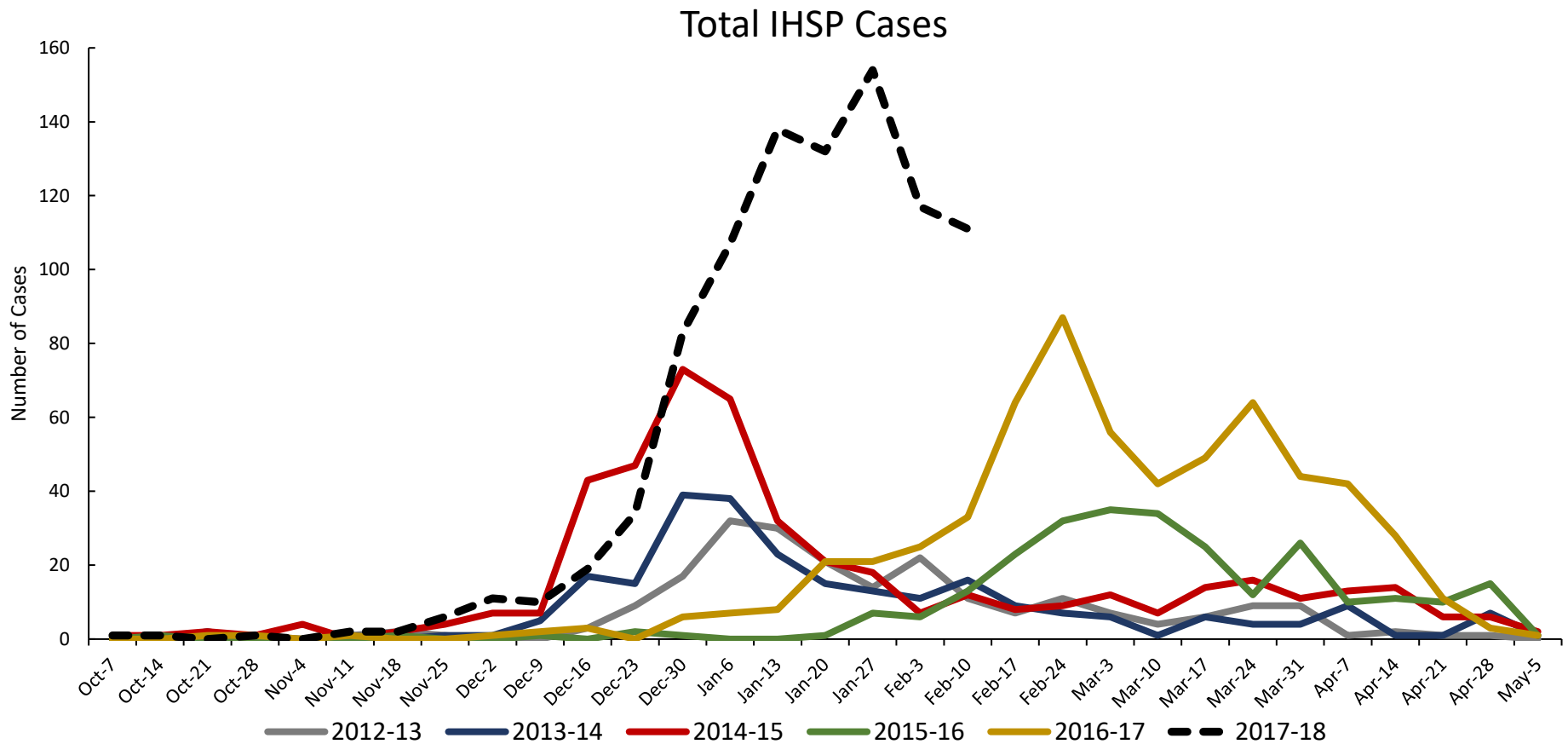
## National Surveillance

In the United States, 7.5% of outpatient visits were due to influenza-like illness, which is above the national baseline of 2.2%.

# Influenza-related Hospitalization Surveillance Week Ending February 10

## Influenza Hospitalization Surveillance Project

The CDC Influenza Hospitalization Surveillance Project (IHSP) provides population-based rates of hospitalization due to severe influenza-related illness through active surveillance and chart review of lab-confirmed cases from Oct. 1, 2017 until Apr. 30, 2018, for Clinton, Eaton, Ingham, Genesee, and Washtenaw counties. Since Oct. 1, there have been a total of **929 (70 pediatric, 859 adult)** influenza-related hospitalizations reported in the catchment area for the 2017-2018. season.

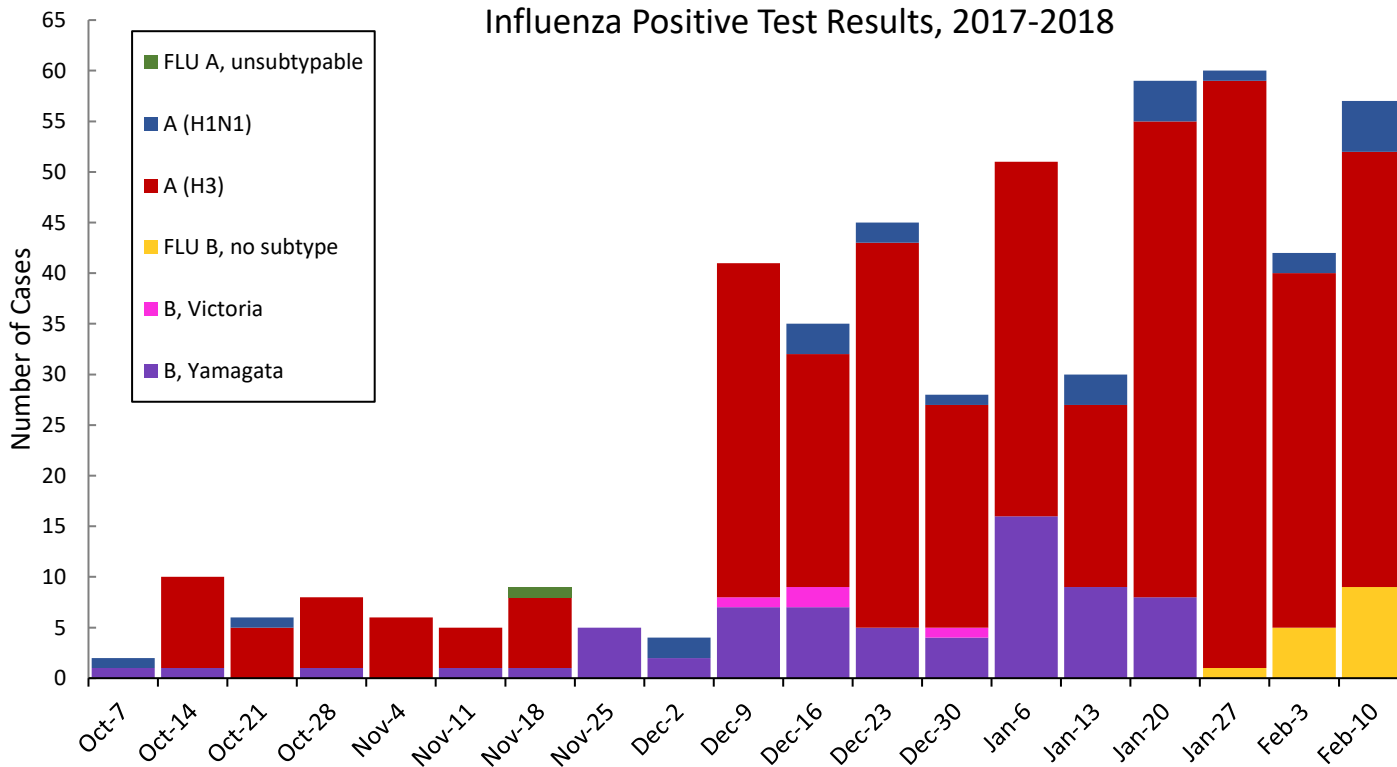


Genesee County was added in 2012-2013

Washtenaw County was added in 2017-2018

MDHHS Bureau of Laboratories reported 54 new positive influenza (11C, 2N, 7SE, 34SW).

Respiratory Virus	# Positive Respiratory Virus Results by Region				Overall Total
	C	N	SE	SW	
2009 A/H1N1pdm	2	2	11	7	22
Influenza A/H3	151	37	95	146	429
Influenza B	14	9	40	22	85
Total	167	48	146	175	536



\*Based on STARLIMS MDHHS BOL Testing Portal

Note: Flu B subtyping will be reported based on MDHHS BOL testing runs (roughly each month) and will be backtracked into this graph

Most recent MDHHS BOL Flu B subtyping run: **January 26th, 2018.**

## Michigan Sentinel Clinical Lab Respiratory Virus Data

Twelve (12) sentinel clinical labs (3SE, 2SW, 7C, 0N) reported during this week.

### SE Region

- Influenza A: very sharply elevated; minimal further increases
- Influenza B: elevated; further strong increases
- Parainfluenza: low
- RSV: elevated; steady or slightly decreasing
- Adenovirus: slightly elevated
- hMPV: elevated; some increases

### Central Region

- Influenza A: moderate to highly elevated; overall gradually decreasing but still some small increases
- Influenza B: low to modestly elevated; slowly increasing or steady
- Parainfluenza: sporadic to low
- RSV: elevated; decreasing or steady
- Adenovirus: low
- hMPV: low

### SW Region

- Influenza A: highly elevated; decreasing trend
- Influenza B: elevated; some decreases
- Parainfluenza: sporadic to low
- RSV: elevated; some further decreases
- Adenovirus: slightly elevated
- hMPV: slightly elevated

### North Region

- No data available

There were 13 (2N, 5C, 3SE, 3SW) new respiratory viral outbreaks reported to MDHHS during this time Period. Respiratory outbreaks for the 2017-2018 season are listed in the table below.

Facility Type	C	N	SE	SW	Total	2015-2016 Total	2016-2017 Total
Schools: K-12 & College	9		2	3	14	10	25
Long-term Care / Assisted Living Facility	79	10	40	49	178	60	138
Healthcare Facility	2		1		3	11	23
Daycare	2			1	3	2	3
Homeless Shelter						0	1
Correctional Facility	1	4	1	2	8	2	2
Other						2	3
<b>Total</b>	<b>93</b>	<b>14</b>	<b>44</b>	<b>55</b>	<b>206</b>	<b>87</b>	<b>195</b>

## Did you know?

Congregate setting outbreaks of viral respiratory illnesses are required to be reported to your local health department? See:

- [Influenza Guidance for Healthcare Providers](#)
- [Guideline for influenza and Respiratory Virus Outbreaks in Long-Term Care Facilities](#)

## FluBytes

- [Influenza ‘running rampant’ in Midland County](#)
- [Two Michigan Cities Ranked Among Most at-risk in US for Flu](#)
- [Flu-like Illness in US Reaches 2009 Pandemic Levels](#)
- [Study Shows Youngest Kids Most at Risk of Flu Death](#)

## MDHHS Contributors

**Bureau of Family Health Services -**

**Bureau of Epidemiology and Population Health –**  
S. Bidol, MPH, S. Eckel, MPH, S. Kim, MPH, M. Ladisky

**Bureau of Labs –** B. Robeson, MT, V. Vavricka, MS

For questions or to be added to the distribution list, please contact Seth Eckel at [EckelS1@michigan.gov](mailto:EckelS1@michigan.gov)